



## **DSL-2640U**

**Wireless ADSL2+ (Annex B) Router  
with Ethernet WAN Support**

## BEFORE YOU BEGIN

### *Delivery Package*

- Router DSL-2640U
- Power adapter DC 12V/0.5A
- RJ-11 telephone cable
- Straight-through Ethernet cable
- Splitter
- “*Quick Installation Guide*” (brochure).

If any of the items are missing, please contact your reseller.

The “*User Manual*” and “*Quick Installation Guide*” documents are available on D-Link website (see [www.dlink.ru](http://www.dlink.ru)).



**Using a power supply with a different voltage rating than the one included will cause damage and void the warranty for this product.**

## ***Default Settings***

<b>Domain name of device</b>	<b>dlinkrouter.local.</b>
<b>IP address of device</b>	<b>192.168.1.1</b>
<b>Username (login)</b>	<b>admin</b>
<b>Password</b>	<b>admin</b>
<b>Name of wireless network (SSID)</b>	<b>DSL-2640U</b>
<b>Network key (PSK password)</b>	see WPS PIN on the barcode label on the bottom panel of the device

## ***System Requirements and Equipment***

- A computer with any operating system that supports a web browser.
- A web browser to access the web-based interface of the router:
  - Apple Safari 8 and later
  - Google Chrome 48 and later
  - Microsoft Internet Explorer 10 and later
  - Microsoft Edge 20.10240 and later
  - Mozilla Firefox 44 and later
  - Opera 35 and later.
- A NIC (Ethernet or Wi-Fi adapter) to connect to the router.
- An 802.11b, g, or n Wi-Fi adapter to create a wireless network.

## CONNECTING TO PC

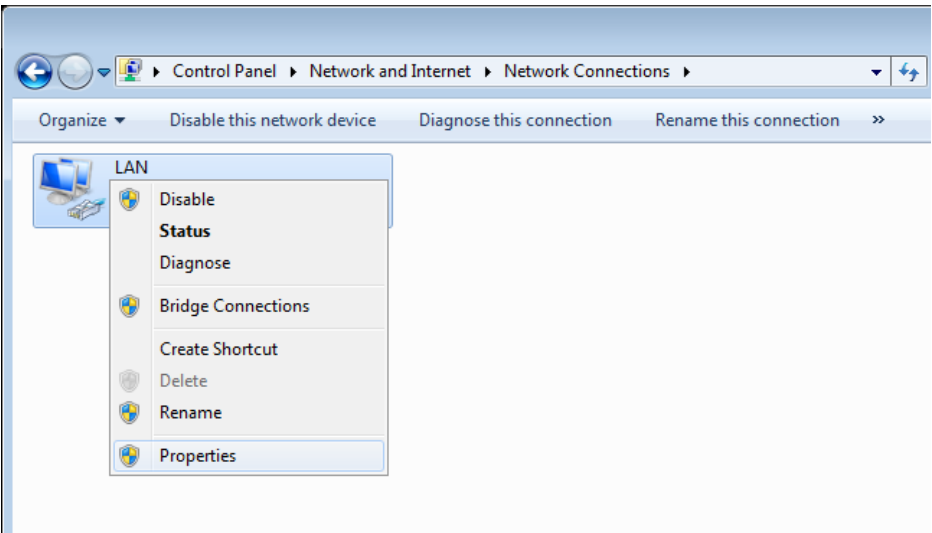
### *PC with Ethernet Adapter*

1. Connect an Ethernet cable between any of four Ethernet ports located on the back panel of the router and the Ethernet port of your PC.
2. ***To connect the router to a DSL line:*** connect a phone cable between the DSL port of the router and the **ADSL OUT** port of the splitter. Connect your phone to the **PHONE** port of the splitter. Then connect another phone cable between a phone jack and the **ADSL IN** port of the splitter.
3. ***To connect the router to an Ethernet line:*** run the Initial Configuration Wizard and select the router's LAN port that will be used as the WAN port. Then connect the Ethernet cable between the selected Ethernet port located on the back panel of the router and the Ethernet line.
4. Connect the power cord to the power connector port on the back panel of the router, then plug the power adapter into an electrical outlet or power strip.
5. Turn on the router by pressing the **ON/OFF** button on its back panel.

Then make sure that your PC is configured to obtain an IP address automatically (as DHCP client).

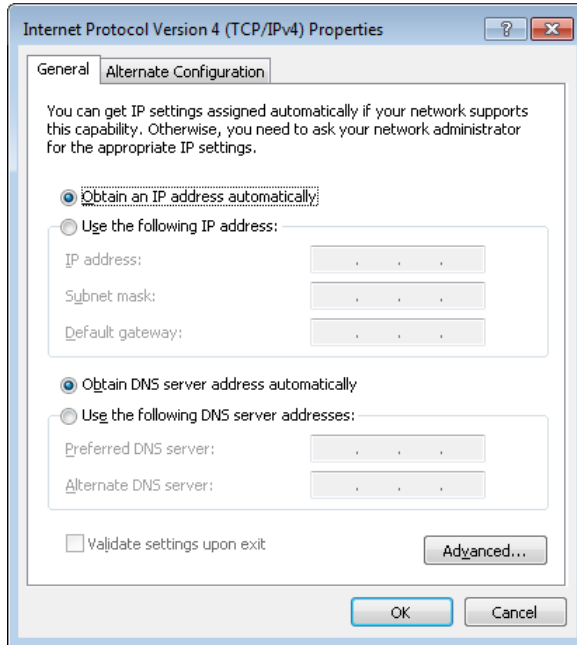
## Obtaining IP Address Automatically (OS Windows 7)

1. Click the **Start** button and proceed to the **Control Panel** window.
2. Select the **Network and Sharing Center** section. (If the Control Panel has the category view (the **Category** value is selected from the **View by** drop-down list in the top right corner of the window), choose the **View network status and tasks** line under the **Network and Internet** section.)
3. In the menu located on the left part of the window, select the **Change adapter settings** line.
4. In the opened window, right-click the relevant **Local Area Connection** icon and select the **Properties** line in the menu displayed.



5. In the **Local Area Connection Properties** window, on the **Networking** tab, select the **Internet Protocol Version 4 (TCP/IPv4)** line. Click the **Properties** button.

6. Make sure that the **Obtain an IP address automatically** and **Obtain DNS server address automatically** choices of the radio buttons are selected. Click the **OK** button.



7. Click the **OK** button in the connection properties window.

## ***PC with Wi-Fi Adapter***

1. ***To connect the router to a DSL line:*** connect a phone cable between the DSL port of the router and the **ADSL OUT** port of the splitter. Connect your phone to the **PHONE** port of the splitter. Then connect another phone cable between a phone jack and the **ADSL IN** port of the splitter.
2. ***To connect the router to an Ethernet line:*** run the Initial Configuration Wizard and select the router's LAN port that will be used as the WAN port. Then connect the Ethernet cable between the selected Ethernet port located on the back panel of the router and the Ethernet line.
3. Connect the power cord to the power connector port on the back panel of the router, then plug the power adapter into an electrical outlet or power strip.
4. Turn on the router by pressing the **ON/OFF** button on its back panel.
5. Make sure that the Wi-Fi adapter of your PC is on. As a rule, modern notebooks with built-in wireless NICs are equipped with a button or switch that turns on/off the wireless adapter (refer to your PC documents). If your PC is equipped with a pluggable wireless NIC, install the software provided with your Wi-Fi adapter.

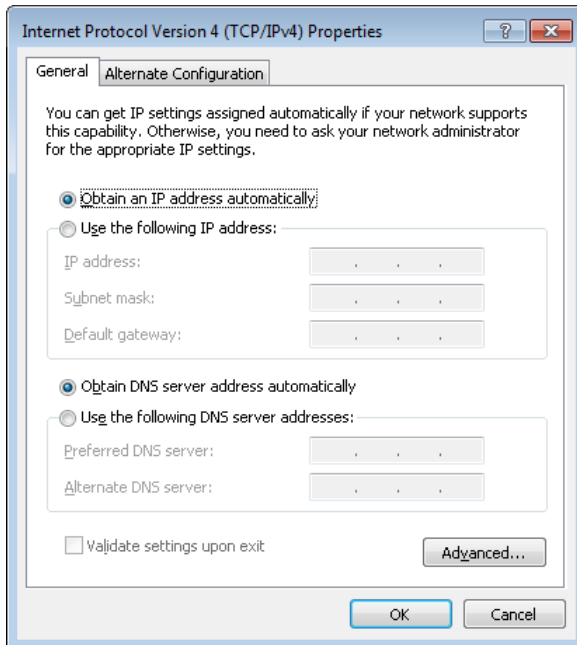
Then make sure that your Wi-Fi adapter is configured to obtain an IP address automatically (as DHCP client).



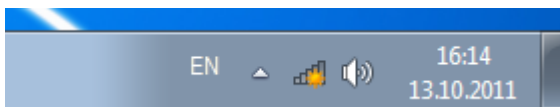
## ***Obtaining IP Address Automatically and Connecting to Wireless Network (OS Windows 7)***

1. Click the **Start** button and proceed to the **Control Panel** window.
2. Select the **Network and Sharing Center** section. (If the Control Panel has the category view (the **Category** value is selected from the **View by** drop-down list in the top right corner of the window), choose the **View network status and tasks** line under the **Network and Internet** section.)
3. In the menu located on the left part of the window, select the **Change adapter settings** line.
4. In the opened window, right-click the relevant **Wireless Network Connection** icon. Make sure that your Wi-Fi adapter is on, then select the **Properties** line in the menu displayed.
5. In the **Wireless Network Connection Properties** window, on the **Networking** tab, select the **Internet Protocol Version 4 (TCP/IPv4)** line. Click the **Properties** button.

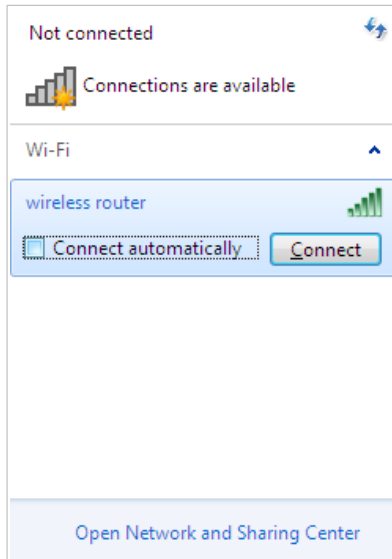
6. Make sure that the **Obtain an IP address automatically** and **Obtain DNS server address automatically** choices of the radio buttons are selected. Click the **OK** button.



7. Click the **OK** button in the connection properties window.
8. To open the list of available wireless networks, select the icon of the wireless network connection and click the **Connect To** button or left-click the network icon in the notification area located on the right side of the taskbar.



- In the opened window, in the list of available wireless networks, select the wireless network **DSL-2640U** and click the **Connect** button.



- In the opened window, enter the network key (see WPS PIN on the barcode label on the bottom panel of the device) in the **Security key** field and click the **OK** button.
- Wait for about 20-30 seconds. After the connection is established, the network icon will be displayed as the signal level scale.



If you perform initial configuration of the router via Wi-Fi connection, note that immediately after changing the wireless default settings of the router you will need to reconfigure the wireless connection using the newly specified settings.

# CONFIGURING ROUTER

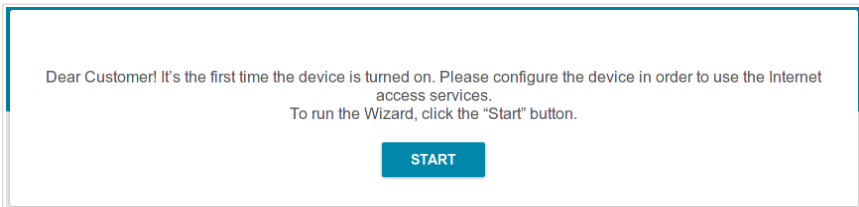
## Connecting to Web-based Interface

Start a web browser. In the address bar of the web browser, enter the domain name of the router (by default, **dlinkrouter.local**) with a dot at the end and press the **Enter** key. Also you can enter the IP address of the device (by default, **192.168.1.1**).

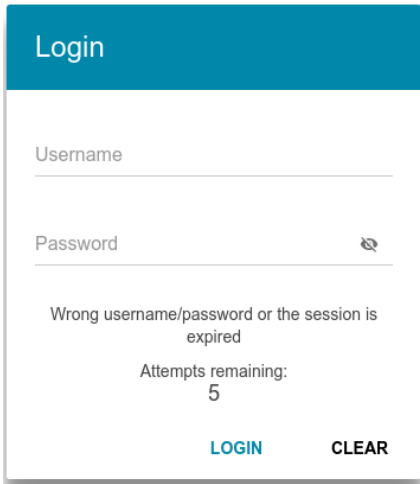


If the error “*The page cannot be displayed*” (or “*Unable to display the page*”/“*Could not connect to remote server*”) occurs upon connecting to the web-based interface of the router, make sure that you have properly connected the router to your computer.

If the device has not been configured previously or the default settings have been restored, after access to the web-based interface the Initial Configuration Wizard opens (see the **Initial Configuration Wizard** section, page 16).



If you configured the device previously, after access to the web-based interface the login page opens. Enter the username (**admin**) in the **Username** field and the password you specified in the **Password** field, then click the **LOGIN** button.



The screenshot shows a web-based login interface. At the top, there is a blue header with the word "Login" in white. Below the header, there are two input fields: "Username" and "Password". The "Password" field has a small eye icon to its right, indicating a password toggle. Below the input fields, there is a message: "Wrong username/password or the session is expired". Underneath this message, it says "Attempts remaining: 5". At the bottom of the form, there are two buttons: "LOGIN" and "CLEAR".

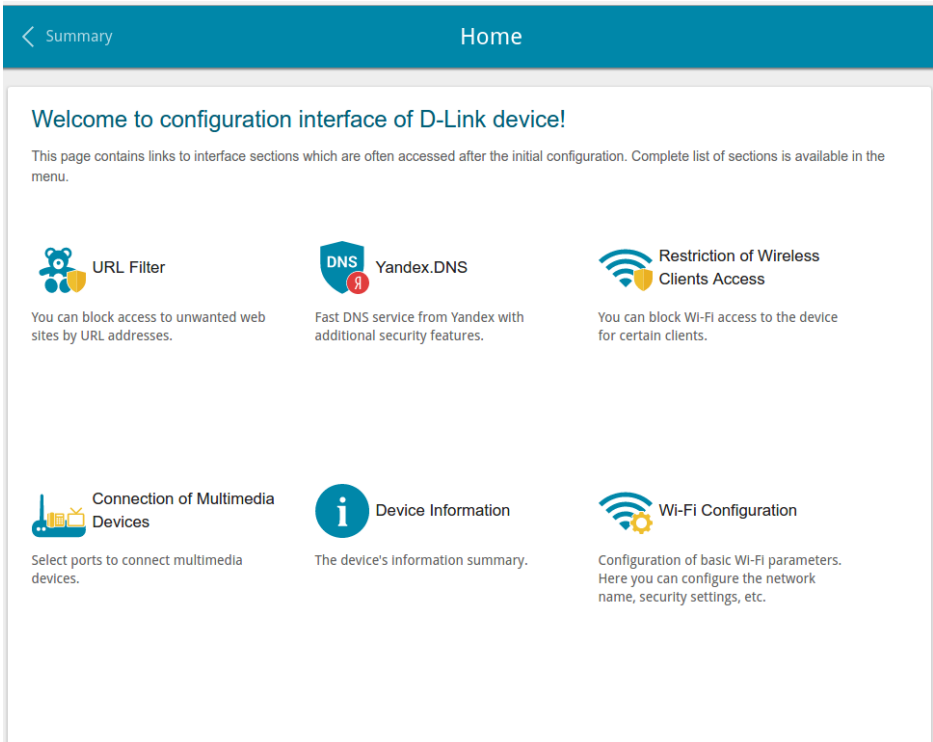
If you enter a wrong password several times, the web-based interface will be blocked for a while. Please wait for one minute and reenter the password you specified.

The **Summary** page displays general information on the router and its software.

The screenshot shows the 'Summary' page of the DSL-2640U router. The page is organized into several sections:

- Device Information:**
  - Model: DSL-2640U
  - Hardware revision: U2
  - Firmware version: 3.0.1
  - Bootloader version: 00.01.10(rt18676s) (Mar 30 2018 12:09:59)
  - Build time: Wed Jun 20 2018 11:39:43 AM MSK
  - Vendor: D-Link Russia
  - Serial number: QX1N2F9511033
  - Support: [support@dlink.ru](mailto:support@dlink.ru)
  - Phone: 8-800-700-5465
  - Summary: Root filesystem image for DSL-2640U
  - Uptime: 00:03:40
- LAN:**
  - LAN IPv4: 192.168.1.1
  - LAN IPv6: fd01::1/64
  - Wireless connections: -
  - Wired connections: 1
- LAN Ports:**
  - LAN1: Off
  - LAN2: On
  - LAN3: Off
  - LAN4: Off
- Wi-Fi 2.4 GHz:**
  - Status: On
  - Broadcasting: On
  - Additional networks: 0
  - Network name (SSID): DSL-2640U-5c5b
  - Security: WPA2-PSK
- DSL Status:**
  - Line status: Off
- Yandex.DNS:**
  - Yandex  Enable
- WAN IPv4:**
  - Connection type: Dynamic IPv4
  - Status: Off
- Safe/Child/Protection off:**
  - Safe: 1 device
  - Child: 0 devices
  - Protection off: 0 devices

The **Home** page displays links to the most frequently used pages with device's settings.

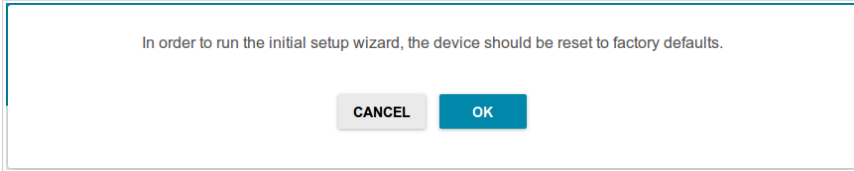


The web-based interface of the router is bilingual (English/Russian). You can select the needed language upon the initial configuration of the web-based interface of the router or in the **System / Configuration** section of the menu.

Other settings of the router are available in the menu in the left part of the page. Go to the relevant section and select the needed page or run the wizard in the **Initial Configuration** section.

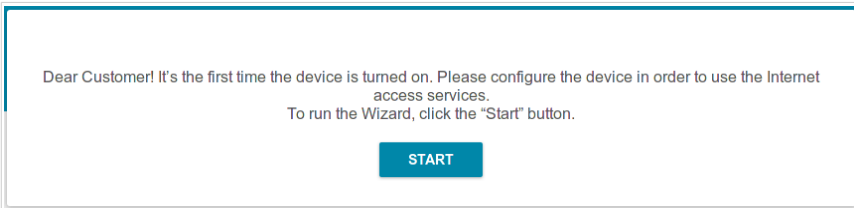
## Initial Configuration Wizard

In order to start the Initial Configuration Wizard manually, go to the **Initial Configuration** section.

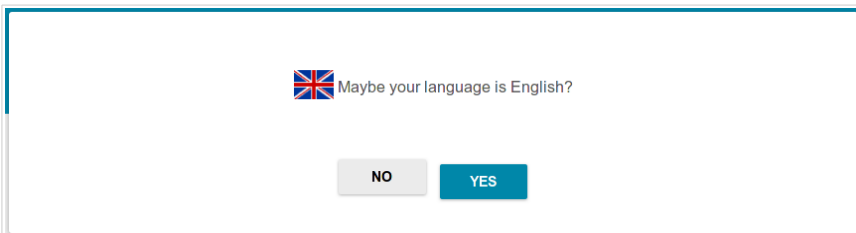


Click the **OK** button and wait until the factory default settings are restored. Then click the **START** button.

If the device has not been configured previously or the default settings have been restored, the Initial Configuration Wizard starts automatically upon access to the web-based interface or upon opening a web site on the Internet.



1. Click **YES** in order to leave the current language of the web-based interface or click **NO** to select the other language.

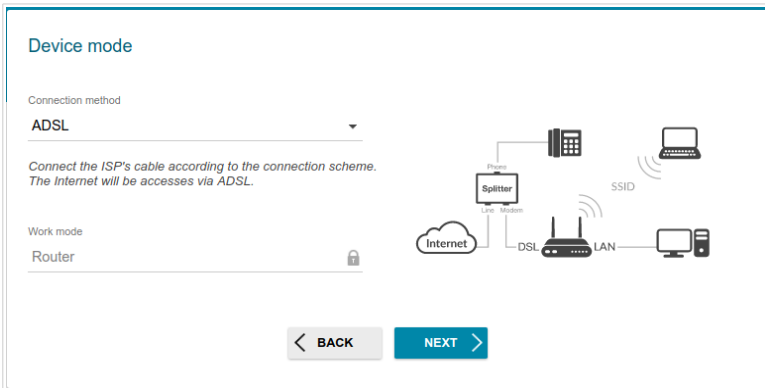


2. On the next page, click the **CONTINUE** button.



## Selecting Operation Mode

In order to connect your device to an ADSL line, on the **Device mode** page, from the **Connection method** list, select the **ADSL** value. In this mode you can configure a WAN connection, set your own settings for the wireless network, configure LAN ports to connect an STB or VoIP phone, and set your own password for access to the web-based interface of the device.



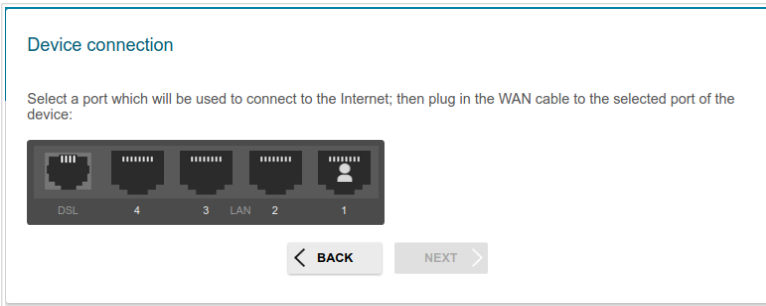
In order to connect your device to an Ethernet line, on the **Device mode** page, from the **Connection method** list, select the **Ethernet (LAN)** value. In this mode you can configure a LAN port as a WAN port, configure a WAN connection, set your own settings for the wireless network, configure LAN ports to connect an STB or VoIP phone, and set your own password for access to the web-based interface of the device.

When the operation mode is selected, click the **NEXT** button.

## Selecting Ethernet WAN Port

This configuration step is available for the **Ethernet (LAN)** connection method.

1. On the **Device connection** page, select a LAN port that will be used as the WAN port.



2. Click the **NEXT** button.

## Configuring Ethernet WAN Connection

**!** You should configure your WAN connection in accordance with data provided by your Internet service provider (ISP). Make sure that you have obtained all necessary information prior to configuring your connection. Otherwise contact your ISP.


1. On the **Internet connection type** page, from the **Connection type** list, select the connection type used by your ISP and fill in the fields displayed on the page.

**Static IPv4:** Fill in the following fields: **IP address**, **Netmask**, **Gateway IP address**, and **DNS IP address**.

IP address*
Netmask*
Gateway IP address*
DNS IP address*


**Static IPv6:** Fill in the following fields: **IP address**, **Prefix**, and **Gateway IP address**.

IP address*
Prefix*
Gateway IP address*

**PPPoE, IPv6 PPPoE, PPPoE Dual Stack:** Enter authorization data provided by your ISP (the username (login) in the **Username** field and the password in the **Password** field). Click the **Show** icon (  ) to display the entered password. If authorization is not required, select the **Without authorization** checkbox.

Without authorization  
  
Username\*  

---

  
Password\* 

2. If your ISP uses MAC address binding, select the **Clone MAC address of your device** checkbox.
3. If the Internet access is provided via a VLAN channel, select the **Use VLAN** checkbox and fill in the **VLAN ID** field.

Clone MAC address of your device  
*In some ISP's networks, it is required to register a certain MAC address in order to get access to the Internet.*  
 Use VLAN  
*Select the checkbox if the Internet access is provided via a VLAN channel.*  
  
VLAN ID\*  

---

4. Click the **NEXT** button.

## Configuring ADSL WAN Connection

**!** You should configure your WAN connection in accordance with data provided by your Internet service provider (ISP). Make sure that you have obtained all necessary information prior to configuring your connection. Otherwise contact your ISP.


1. On the **Internet connection type** page, from the **Connection type** list, select the connection type used by your ISP and fill in the fields displayed on the page.

**Static IPv4, IPoA:** Fill in the following fields: **IP address**, **Netmask**, **Gateway IP address**, and **DNS IP address**.

IP address*	<input type="text"/>
Netmask*	<input type="text"/>
Gateway IP address*	<input type="text"/>
DNS IP address*	<input type="text"/>

**Static IPv6:** Fill in the following fields: **IP address**, **Prefix**, and **Gateway IP address**.

IP address*	<input type="text"/>
Prefix*	<input type="text"/>
Gateway IP address*	<input type="text"/>

**PPPoE, IPv6 PPPoE, PPPoE Dual Stack, PPPoA:** Enter authorization data provided by your ISP (the username (login) in the **Username** field and the password in the **Password** field). Click the **Show** icon (  ) to display the entered password. If authorization is not required, select the **Without authorization** checkbox.

Without authorization

Username\*

Password\*  

2. Specify the VPI and VCI values in the relevant fields.

VPI (0-255)\*

VCI (32 - 65535)\*

3. Click the **NEXT** button.

## Configuring Wireless Network

1. On the **Wireless Network 2.4 GHz** page, in the **Network name** field, specify your own name for the wireless network or leave the value suggested by the router.
2. In the **Password** field, specify your own password for access to the wireless network or leave the value suggested by the router (WPS PIN of the device, see the barcode label).
3. You can restore the parameters of the wireless network specified before resetting to factory defaults. To do this, click the **RESTORE** button.

### Wireless Network 2.4 GHz

Enable


Network name\*

|

ⓘ The number of characters should not exceed 32

Open network

Password\*

..... 

ⓘ Password should be between 8 and 63 ASCII characters

**RESTORE** You can restore network name and security that was set before applying factory settings.

4. If you want to create an additional wireless network isolated from your LAN, select the **Enable guest network** checkbox.

Enable guest network

*Guest Wi-Fi network allows connection to your device and getting access to the Internet.  
Upon that computers connected to this wireless network will be isolated from the resources of your main local area network.  
This helps to secure your LAN while you provide access to the Internet for temporary users.*

Network name\*

| \_\_\_\_\_

*The number of characters should not exceed 32*

Open network

Max associated clients\*

0 \_\_\_\_\_

Enable shaping

5. In the **Network name** field, specify your own name for the guest wireless network or leave the value suggested by the router.
6. If you want to create a password for access to the guest wireless network, deselect the **Open network** checkbox and fill in the **Password** field.
7. If you want to limit the bandwidth of the guest wireless network, select the **Enable shaping** checkbox and fill in the **Shaping** field.
8. Click the **NEXT** button.



## Configuring LAN Ports for IPTV/VoIP

1. On the **IPTV** page, select the **Is an STB connected to the device** checkbox.

IPTV

Is an STB connected to the device?

If your ISP provides IPTV service, you can connect an STB directly to the router without additional equipment

Use VLAN ID

DSL 4 3 LAN 2 1

[← BACK](#) [NEXT →](#)

2. Select a free LAN port for connecting your set-top box.
3. *For the **Ethernet (LAN)** connection method:* If the IPTV service is provided via a VLAN channel, select the **Use VLAN ID** checkbox and fill in the **VLAN ID** field.
4. *For the **ADSL** connection method:* Specify the VPI and VCI values in the relevant fields.
5. Click the **NEXT** button.

6. On the **VoIP** page, select the **In an IP phone connected to the device** checkbox.

VoIP

Is an IP phone connected to the device?

If your ISP provides VoIP service, you can connect an IP phone directly to the router without additional equipment

Use VLAN ID

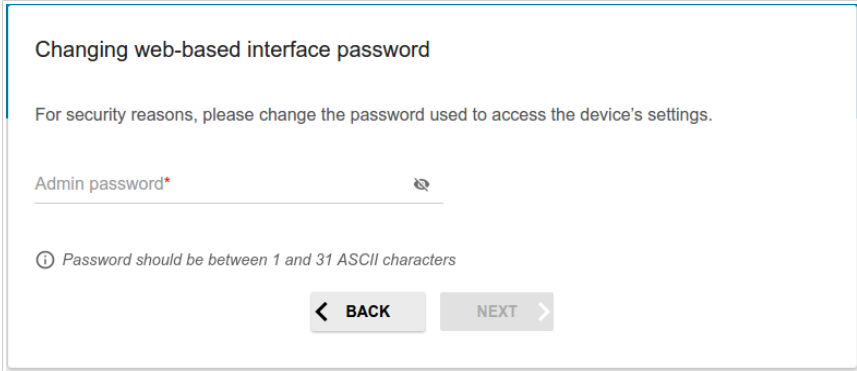
DSL 4 3 LAN 2 1

**BACK** **NEXT**

7. Select a free LAN port for connecting your IP phone.
8. For the **Ethernet (LAN)** connection method: If the VoIP service is provided via a VLAN channel, select the **Use VLAN ID** checkbox and fill in the **VLAN ID** field.
9. For the **ADSL** connection method: Specify the VPI and VCI values in the relevant fields.
10. Click the **NEXT** button.

## Changing Web-based Interface Password

On this page you should change the default administrator password. You may set any password except **admin**. Use digits, Latin letters (uppercase and/or lowercase), and other characters available in the US keyboard layout.<sup>1</sup>



Changing web-based interface password

For security reasons, please change the password used to access the device's settings.

Admin password\*

ⓘ Password should be between 1 and 31 ASCII characters

< BACK      NEXT >

**!** Remember or write down the new password for the administrator account. In case of losing the new password, you can access the settings of the router only after restoring the factory default settings via the hardware **RESET** button. This procedure wipes out all settings that you have configured for your router.

Click the **NEXT** button.

On the next page, check all the settings you have just specified.

Also you can save a text file with parameters set by the Wizard to your PC. To do this, click the **SAVE CONFIGURATION FILE** button and follow the dialog box appeared.

To finish the Wizard, click the **APPLY** button. The router will apply settings, reboot, if needed, and check the Internet connection if the Wizard has configured a WAN connection.

---

<sup>1</sup> 0-9, A-Z, a-z, space, !"#\$%&'()\*+,-./:;<=>?@[\\]^\_`{|}~.

## Configuring Local Area Network

1. Go to the **Connections Setup / LAN** page.
2. If needed, change the IPv4 address of the router's LAN interface and the mask of the local subnet. To do this, click the **IPv4** tab and specify needed values in the **IP address** and **Subnet mask** fields in the **Local IP Address** section.

Local IP Address

IP address\*  
192.168.1.1

Subnet mask\*  
255.255.255.0

Device domain name  
dlinkrouter.local

3. If needed, specify your own IPv6 address of the router's LAN interface. To do this, click the **IPv6** tab and select the **Static** value from the **Mode of local IPv6 address assignment** drop-down list in the **Local IPv6 Address** section. Then specify the needed value in the **IPv6 address** field.

Local IPv6 Address

Mode of local IPv6 address assignment  
Static

IPv6 address\*  
fd01::1

Prefix\*  
64

4. **IPv4 address assignment.** By default, the built-in DHCP server of the router assigns IPv4 addresses to the devices of the LAN. If you want to manually assign IPv4 addresses, disable the DHCP server (click the **IPv4** tab and select the **Disable** value from the **Mode of dynamic IP address assignment** drop-down list in the **Dynamic IP Addresses** section).

### Dynamic IP Addresses

Mode of dynamic IP address assignment  
DHCP server ▼

---

Start IP\*  
192.168.1.2

---

End IP\*  
192.168.1.254

---

Lease time (in minutes)\*  
1440

5. **IPv6 address assignment.** By default, the devices of the LAN automatically assign IPv6 addresses to themselves (the **Stateless** value is selected from the **Mode of dynamic IPv6 address assignment** drop-down list in the **Dynamic IPv6 Addresses** section on the **IPv6** tab). If the devices of the LAN do not support IPv6 address autoconfiguration, enable the built-in DHCPv6 server of the router (select the **Stateful** value from the **Mode of dynamic IPv6 address assignment** drop-down list). If you want to manually assign IPv6 addresses to devices of the LAN, select the **Disable** value from the **Mode of dynamic IPv6 address assignment** drop-down list.

Dynamic IPv6 Addresses

Mode of dynamic IPv6 address assignment  
**Stateful** ▼

---

Start IPv6\*  
**fd01::2**

---

End IPv6\*  
**fd01::ffff:ffff:ffff**

---

Lease time (in minutes)\*  
**5**

---

6. After specifying the needed parameters on the **Connections Setup / LAN** page, click the **APPLY** button.

## SPECIFICATIONS\*

Hardware	
<b>Processor</b>	<ul style="list-style-type: none"> <li>· RTL8676S (450MHz)</li> </ul>
<b>RAM</b>	<ul style="list-style-type: none"> <li>· 32 MB, SDRAM</li> </ul>
<b>Flash</b>	<ul style="list-style-type: none"> <li>· 8 MB, SPI</li> </ul>
<b>Interfaces</b>	<ul style="list-style-type: none"> <li>· RJ-11 DSL port</li> <li>· 4 10/100BASE-TX LAN ports</li> </ul>
<b>LEDs</b>	<ul style="list-style-type: none"> <li>· POWER</li> <li>· 4 LAN LEDs</li> <li>· WLAN</li> <li>· WPS</li> <li>· DSL</li> <li>· INTERNET</li> </ul>
<b>Buttons</b>	<ul style="list-style-type: none"> <li>· ON/OFF button to power on/power off</li> <li>· RESET button to restore factory default settings</li> <li>· WPS button to set up wireless connection</li> <li>· WIRELESS ON/OFF button to enable/disable wireless network</li> </ul>
<b>Antenna</b>	<ul style="list-style-type: none"> <li>· External non-detachable omnidirectional antenna (2dBi gain)</li> </ul>
<b>Power connector</b>	<ul style="list-style-type: none"> <li>· Power input connector (DC)</li> </ul>

\* The device features are subject to change without notice. For the latest versions of the firmware and relevant documentation, visit [www.dlink.ru](http://www.dlink.ru).

DSL Parameters	
<b>ADSL Standards</b>	<ul style="list-style-type: none"> <li>· ADSL: ANSI T1.413-1998 Issue 2; ITU-T G.992.1 (G.dmt) Annex B, ITU-T G.992.2 (G.lite) Annex B</li> <li>· ADSL2: ITU-T G.992.3 Annex B</li> <li>· ADSL2+: ITU-T G.992.5 Annex B</li> </ul>
<b>ATM/PPP Protocols</b>	<ul style="list-style-type: none"> <li>· Bridged and routed Ethernet encapsulation</li> <li>· VC-based or LLC-based multiplexing</li> <li>· ATM Forum UNI3.1/4.0 PVC (up to 8 PVCs)</li> <li>· ATM Adaptation Layer Type 5 (AAL5)</li> <li>· ITU-T I.610 OAM F4/F5 loopback</li> <li>· ATM QoS</li> <li>· PPP over ATM (RFC 2364)</li> <li>· PPP over Ethernet (PPPoE)</li> <li>· Keep-alive for PPP connections</li> </ul>

Software	
<b>WAN connection types</b>	<ul style="list-style-type: none"> <li>· PPPoA</li> <li>· PPPoE</li> <li>· IPv6 PPPoE</li> <li>· PPPoE Dual Stack</li> <li>· IPoA</li> <li>· Static IPv4 / Dynamic IPv4</li> <li>· Static IPv6 / Dynamic IPv6</li> <li>· Bridge</li> </ul>
<b>Network functions</b>	<ul style="list-style-type: none"> <li>· DHCP server/relay</li> <li>· Stateful/Stateless mode for IPv6 address assignment, IPv6 prefix delegation</li> <li>· DNS relay</li> <li>· Dynamic DNS</li> <li>· Static IP routing</li> <li>· Static IPv6 routing</li> <li>· IGMP Proxy</li> <li>· IGMP snooping</li> <li>· RIP</li> <li>· Support of UPnP IGD</li> <li>· Support of VLAN</li> <li>· WAN ping respond</li> <li>· Support of SIP ALG</li> <li>· Support of RTSP</li> </ul>



Software	
<b>Firewall functions</b>	<ul style="list-style-type: none"> <li>· Network Address Translation (NAT)</li> <li>· Stateful Packet Inspection (SPI)</li> <li>· IP filter</li> <li>· IPv6 filter</li> <li>· MAC filter</li> <li>· URL filter</li> <li>· DMZ</li> <li>· Prevention of ARP and DDoS attacks</li> <li>· Virtual servers</li> <li>· Built-in Yandex.DNS web content filtering service</li> </ul>
<b>VPN</b>	<ul style="list-style-type: none"> <li>· IPSec/PPTP/L2TP/PPPoE pass-through</li> </ul>
<b>QoS</b>	<ul style="list-style-type: none"> <li>· Interface grouping</li> <li>· VLAN priority (802.1p)</li> </ul>
<b>Management</b>	<ul style="list-style-type: none"> <li>· Local and remote access to settings through TELNET/WEB (HTTP/HTTPS)</li> <li>· Bilingual web-based interface for configuration and management (Russian/English)</li> <li>· Firmware update via web-based interface</li> <li>· Automatic notification on new firmware version</li> <li>· Saving/restoring configuration to/from file</li> <li>· Support of remote logging</li> <li>· Automatic synchronization of system time with NTP server and manual time/date setup</li> <li>· Ping utility</li> <li>· Traceroute utility</li> <li>· TR-069 client</li> </ul>

Wireless Module Parameters	
<b>Standards</b>	<ul style="list-style-type: none"> <li>· IEEE 802.11b/g/n</li> </ul>
<b>Frequency range</b>	<ul style="list-style-type: none"> <li>· 2400 ~ 2483.5MHz</li> </ul>
<b>Wireless security connection</b>	<ul style="list-style-type: none"> <li>· WEP</li> <li>· WPA/WPA2 (Personal/Enterprise )</li> <li>· MAC filter</li> <li>· WPS (PBC/PIN)</li> </ul>

<b>Wireless Module Parameters</b>	
<b>Advanced functions</b>	<ul style="list-style-type: none"> <li>· WMM (Wi-Fi QoS)</li> <li>· Information on connected Wi-Fi clients</li> <li>· Advanced settings</li> <li>· Guest Wi-Fi / support of MBSSID</li> <li>· Limitation of wireless network rate</li> <li>· Periodic scan of channels, automatic switch to least loaded channel</li> <li>· Autonegotiation of channel bandwidth in accordance with environment conditions (20/40 Coexistence)</li> </ul>
<b>Wireless connection rate</b>	<ul style="list-style-type: none"> <li>· IEEE 802.11b: 1, 2, 5.5, and 11Mbps</li> <li>· IEEE 802.11g: 6, 9, 12, 18, 24, 36, 48, and 54Mbps</li> <li>· IEEE 802.11n: from 6.5 to 150Mbps (from MCS0 to MCS7)</li> </ul>
<b>Transmitter output power</b>  <i>The maximum value of the transmitter output power depends upon the radio frequency regulations applied in your country</i>	<ul style="list-style-type: none"> <li>· 802.11b (typical at room temperature 25 °C) 18dBm</li> <li>· 802.11g (typical at room temperature 25 °C) 15.5dBm</li> <li>· 802.11n (typical at room temperature 25 °C) 14dBm</li> </ul>
<b>Receiver sensitivity</b>	<ul style="list-style-type: none"> <li>· 802.11b (typical at room temperature 25 °C) -82dBm at 1Mbps -80dBm at 2Mbps -78dBm at 5.5Mbps -76dBm at 11Mbps</li> <li>· 802.11g (typical at room temperature 25 °C) -85dBm at 6Mbps -84dBm at 9Mbps -82dBm at 12Mbps -80dBm at 18Mbps -77dBm at 24Mbps -73dBm at 36Mbps -69dBm at 48Mbps -68dBm at 54Mbps</li> </ul>

### Wireless Module Parameters

	<ul style="list-style-type: none"> <li>· 802.11n (typical at room temperature 25 °C) HT20 -82dBm at MCS0 -79dBm at MCS1 -77dBm at MCS2 -74dBm at MCS3 -70dBm at MCS4 -66dBm at MCS5 -65dBm at MCS6 -64dBm at MCS7</li> <li>HT40 -79dBm at MCS0 -76dBm at MCS1 -74dBm at MCS2 -71dBm at MCS3 -67dBm at MCS4 -63dBm at MCS5 -62dBm at MCS6 -61dBm at MCS7</li> </ul>
<b>Modulation schemes</b>	<ul style="list-style-type: none"> <li>· 802.11b: DQPSK, DBPSK, DSSS, and CCK</li> <li>· 802.11g: BPSK, QPSK, 16QAM, 64QAM with OFDM</li> <li>· 802.11n: BPSK, QPSK, 16QAM, 64QAM with OFDM</li> </ul>

### Physical Parameters

<b>Dimensions (L x W x H)</b>	<ul style="list-style-type: none"> <li>· 174 x 119 x 32 mm (7 x 4.7 x 1.3 in)</li> </ul>
<b>Weight</b>	<ul style="list-style-type: none"> <li>· 197 g (0.43 lb)</li> </ul>

### Operating Environment

<b>Power</b>	<ul style="list-style-type: none"> <li>· Output: 12V DC, 0.5A</li> </ul>
<b>Temperature</b>	<ul style="list-style-type: none"> <li>· Operating: from 0 to 40 °C</li> <li>· Storage: from -20 to 70 °C</li> </ul>
<b>Humidity</b>	<ul style="list-style-type: none"> <li>· From 5% to 95% (non-condensing)</li> </ul>

## SAFETY RULES AND CONDITIONS

Please carefully read this section before installation and connection of the device. Make sure that the power adapter and cables are not damaged. The device should be used only as intended in accordance with the documents.

The device is intended for use in dry, clean, dust-free, and well ventilated areas with normal humidity away from strong heat sources. Do not use the device outdoors or in the areas with high humidity. Do not place foreign objects on the device. Do not obstruct the ventilation openings of the device. The environmental temperature near the device and the temperature inside the device's cover should be within the range from 0 °C to +40 °C.

Only use the power adapter supplied with the device. Do not plug in the adapter, if its case or cable are damaged. Plug the adapter only into working electrical outlets with parameters indicated on the adapter.

Do not open the cover of the device! Unplug the device before dusting and cleaning. Use a damp cloth to clean the device. Do not use liquid/aerosol cleaners or magnetic/static cleaning devices. Prevent moisture getting into the device or the power adapter.

The service life of the device is 2 years.

## TECHNICAL SUPPORT

You can find software updates and user documentation on our website.

D-Link provides its customers with free support within the product's warranty period.

Customers can contact the technical support group by phone or by e-mail/Internet.

### **FOR TELEPHONE NUMBERS AND ADDRESSES OF D-LINK OFFICES WORLDWIDE VISIT**

<http://www.dlink.com/corporate/worldwideoffices/>