



DSL-2750U/NRU

**3G/ADSL/Ethernet Router with
Wi-Fi and Built-in Switch**

BEFORE YOU BEGIN

Delivery Package

- Router DSL-2750U/NRU
- Power adapter
- RJ-11 telephone cable
- Straight-through Ethernet cable (CAT 5E)
- Splitter
- CD-ROM with “*User Manual*” and “*Quick Installation Guide*”
- “*Quick Installation Guide*” (brochure)

If any of the items are missing, please contact your reseller.

! Using a power supply with a different voltage rating than the one included will cause damage and void the warranty for this product.

Default Settings

IP address of router	192.168.1.1
Username (login)	admin
Password	admin
Name of wireless network (SSID)	DSL_2750

System Requirements and Equipment

- A computer with any operating system that supports a web browser.
- A web browser to access the web-based interface of the router: Windows Internet Explorer, Mozilla Firefox, or Opera.
- A NIC (Ethernet or Wi-Fi adapter) to connect to the router.
- A 802.11b, g, or n Wi-Fi adapter to create a wireless network.
- A 3G USB modem¹ to connect to the Internet via 3G GSM network².

! Your USB modem should be equipped with an active identification card (SIM card) of your operator.

CONNECTING TO PC (OS WINDOWS XP)

PC with Ethernet Adapter

1. Make sure that your PC is powered off.
2. Connect an Ethernet cable between any of four Ethernet ports located on the back panel of the router and the Ethernet port of your PC.
3. **To connect via 3G network:** connect your USB modem to the USB port located on the back panel of the router.
4. **To connect the router to a DSL line:** connect a phone cable between the DSL port of the router and the **ADSL OUT** port of the splitter. Connect your phone to the **PHONE** port of the splitter. Then connect another phone cable between a phone jack and the **ADSL IN** port of the splitter.
5. **To connect the router to an Ethernet line:** connect the Ethernet cable between any of four Ethernet ports located on the back panel of the router and the Ethernet line.
6. Connect the power cord to the power connector port on the back panel of the router, then plug the power adapter into an electrical outlet or power strip.

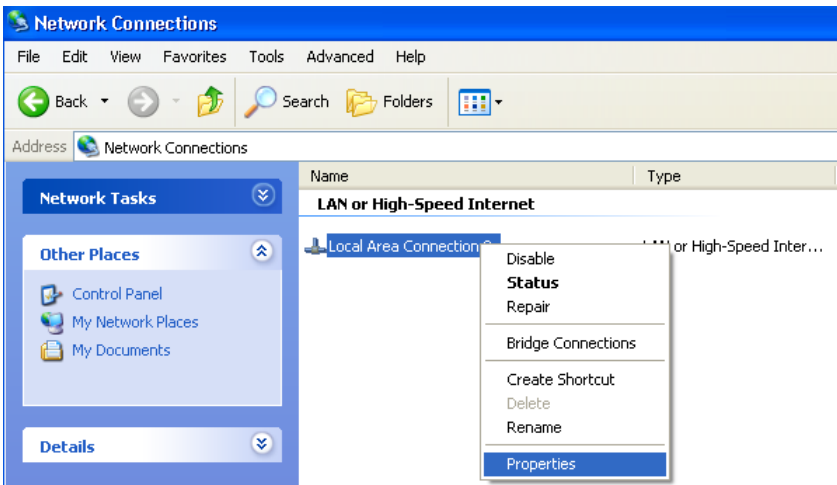
¹ For the list of recommended USB modems, refer to the *Supported USB Modems* section of the “*User Manual*” document.

² Contact your mobile operator to check whether the relevant service is subscribed and to get information on the service coverage and fees.

7. Turn on your PC and wait until your operating system is completely loaded.

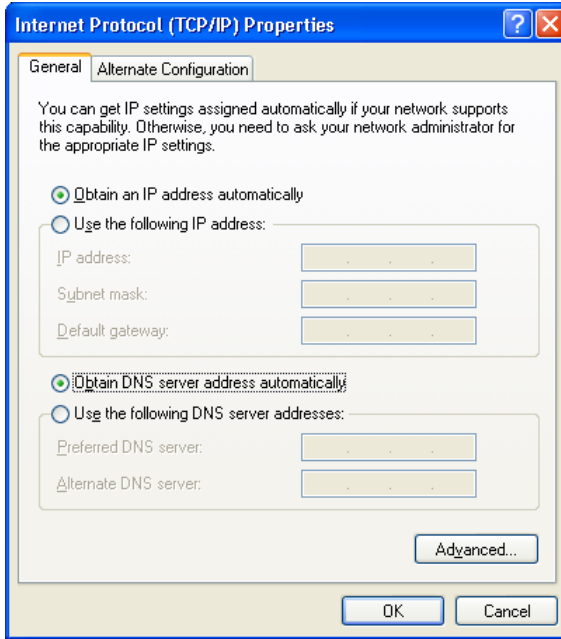
Now you should configure your PC to obtain an IP address automatically (as DHCP client).

1. Click the **Start** button and proceed to the **Control Panel > Network and Internet Connections > Network Connections** window.
2. In the **Network Connections** window, right-click the relevant **Local Area Connection** icon and select the **Properties** line in the menu displayed.



3. In the **Local Area Connection Properties** window, on the **General** tab, in the **This connection uses the following items** section, select the **Internet Protocol (TCP/IP)** line. Click the **Properties** button.

4. Select the **Obtain an IP address automatically** radio button. Click the **OK** button.



Click the **OK** button. Now your computer is configured to obtain an IP address automatically.

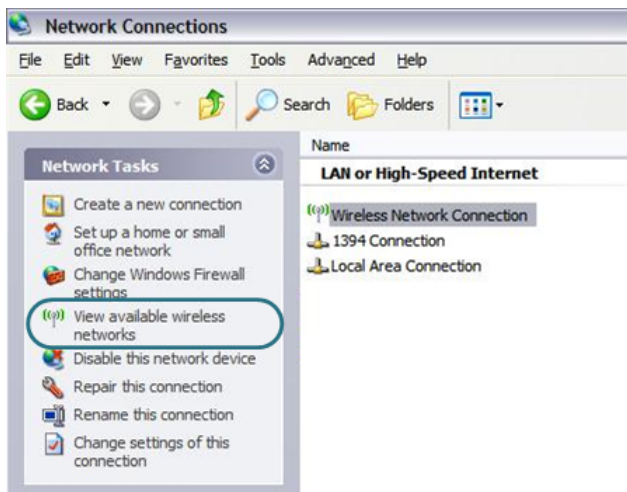
PC with Wi-Fi Adapter

1. **To connect via 3G network:** connect your USB modem to the USB port located on the back panel of the router.
2. **To connect the router to a DSL line:** connect a phone cable between the DSL port of the router and the **ADSL OUT** port of the splitter. Connect your phone to the **PHONE** port of the splitter. Then connect another phone cable between a phone jack and the **ADSL IN** port of the splitter.
3. **To connect the router to an Ethernet line:** connect the Ethernet cable between any of four Ethernet ports located on the back panel of the router and the Ethernet line.

4. Connect the power cord to the power connector port on the back panel of the router, then plug the power adapter into an electrical outlet or power strip.
5. Turn on Wi-Fi: push the relevant button on the back panel of the router.
6. Turn on your PC and wait until your operating system is completely loaded.
7. Turn on your Wi-Fi adapter. As a rule, modern notebooks with built-in wireless NICs are equipped with a button or switch that turns on/off the wireless adapter (refer to your PC documents). If your PC is equipped with a pluggable wireless NIC, install the software provided with your Wi-Fi adapter.

Now you should configure your Wi-Fi adapter.

1. Click the **Start** button and proceed to the **Control Panel > Network and Internet Connections > Network Connections** window.
2. Select the icon of the wireless connection and make sure that your Wi-Fi adapter is on.



3. Search for available wireless networks.
4. In the opened **Wireless Network Connection** window, select the needed wireless network (**DSL_2750**) and click the **Connect** button.

After that the **Wireless Network Connection Status** window appears.

CONFIGURING ROUTER

Connecting to Web-based Interface

1. Start a web browser.
2. In the address bar of the web browser, enter the IP address of the router (by default, the following IP address is specified: **192.168.1.1**). Press the **Enter** key.



3. On the opened page, enter the username (login) and password for the administrator account (by default, the following username and password are specified: **admin**, **admin**). Then click the **Enter** button.

A screenshot of a login form. It has two input fields: "Login:" with the text "admin" and "Password:" with "*****". Below the fields are two buttons: "Clear" and "Enter".

! If the error “The page cannot be displayed” (or “Unable to display the page”/“Could not connect to remote server”) occurs upon connecting to the web-based interface of the router, make sure that you have properly connected the router to your computer.

After successful registration the system statistics page opens. The page displays general information on the router and its software.

! It is strongly recommended to change the administrator password upon initial configuration of the router. To do this, go to the **System / Administrator password** page.

The web-based interface of the router is bilingual (English/Russian). Select a needed language from the menu displayed when the mouse pointer is over the **Language** caption. You can change the language of the web-based interface in any menu item.

Configuring Connection to the Internet



You should configure your WAN connection in accordance with data provided by your Internet service provider (ISP). Make sure that you have obtained all necessary information prior to configuring your WAN connection. Otherwise contact your ISP.

3G WAN Connection

If the PIN code check is enabled for the SIM card inserted into your USB modem, then prior to creating a 3G WAN connection, proceed to the **USB modem** menu and enter the PIN code on the page displayed.

1. Go to the **Net / Connections** page and click the **Add** button.
2. In the **General settings** section, specify a name for your connection (any name for easier identification) in the **Name** field and select the **3G** value from the **Connection Type** drop-down list.
3. In the **Physical layer** section, select the **usb** value from the **Physical interface** drop-down list.

- In the **PPP Settings** section, enter authorization data provided by your operator (the username (login) in the **PPP Username** field and the password in the **Password** and **Password confirmation** fields), or select the **Without authorization** checkbox if authorization is not required.

PPP settings

Enter the username, password, and other settings provided by the ISP.

PPP Username:	<input type="text"/>
Without authorization:	<input type="checkbox"/>
Password:	<input type="text"/>
Password confirmation:	<input type="text"/>
Authentication algorithm:	<input type="text" value="AUTO"/> ▼
APN:	<input type="text"/>
Dial number:	<input type="text"/>

- In the **APN** field, enter the access point name, and in the **Dial number** field, enter the number dialed to connect to the authorization server of the operator.
- Click the **Save** button.

ADSL WAN Connection

- Go to the **Net / Connections** page and click the **Add** button.
- In the **General settings** section, specify a name for your connection (any name for easier identification) in the **Name** field and select a type for your connection from the **Connection Type** drop-down list.

3. In the **Physical layer** section, specify the VPI and VCI in the relevant fields, and then select a method of encapsulation from the **Encapsulation Mode** drop-down list.

Physical layer

Physical interface selection and tuning

Physical interface:	<input type="button" value="Create"/> ▼
VPI (0-255):	<input type="text" value="0"/>
VCI (32-65535):	<input type="text" value="35"/>
Encapsulation Mode:	<input type="button" value="LLC"/> ▼

4. For the **IPoA** and **IPoE** connection types, fill in the **IP Address**, **Netmask**, and **Gateway IP Address** fields in the **IP settings** section. For the **IPoE** type, you can specify automatic assignment of these parameters (to do this, select the **Obtain an IP address automatically** checkbox).

IP settings

Internet Protocol settings

IP Address:	<input type="text"/> . <input type="text"/> . <input type="text"/> . <input type="text"/>
Netmask:	<input type="text"/> . <input type="text"/> . <input type="text"/> . <input type="text"/>
Gateway IP address:	<input type="text"/> . <input type="text"/> . <input type="text"/> . <input type="text"/>

- For the **PPPoE** and **PPPoA** connection types, enter authorization data provided by your ISP in the **PPP Settings** section (the username (login) in the **PPP Username** field and the password in the **Password** and **Password confirmation** fields). If these data have not been provided by your ISP, select the **Without authorization** checkbox.



PPP settings

Enter the username, password, and other settings provided by the ISP.

PPP Username:

Without authorization:

Password:

Password confirmation:

- Deselect the **NAT** checkbox in the **Miscellaneous** section if your ISP requires you to disable the network address translation function.
- Click the **Save** button.

Ethernet WAN Connection


- Go to the **Advanced / Interface grouping** page.
- Select the choice corresponding to the LAN port that will be used as the WAN port of the **Ethernet WAN port** radio button, and click the **Save** button.
- Go to the **Net / Connections** page and click the **Add** button.
- In the **General settings** section, specify a name for your connection (any name for easier identification) in the **Name** field and select a type for your connection from the **Connection Type** drop-down list (for the Static IP and DHCP connection types select the **IPoE** value).

5. In the **Physical layer** section, select the value corresponding to the LAN port that will be used as the WAN port from the **Physical interface** drop-down list.

Physical layer

Physical interface selection and tuning

Physical interface:

LAN3 


MAC:

: : : : :

6. In the **IP settings** section, fill in the **IP Address**, **Netmask**, and **Gateway IP Address** fields for the Static IP type. Select the **Obtain an IP address automatically** checkbox for the DHCP type.
7. For the **PPPoE** connection type, enter authorization data provided by your ISP in the **PPP Settings** section (the username (login) in the **PPP Username** field and the password in the **Password** and **Password confirmation** fields). If these data have not been provided by your ISP, select the **Without authorization** checkbox.
8. Deselect the **NAT** checkbox in the **Miscellaneous** section if your ISP requires you to disable the network address translation function.
9. Click the **Save** button.

Configuring Local Area Network

1. Go to the **Net / Connections** page and select the **LAN** connection. If needed, change the IP address and subnet mask for the LAN interface of the router in the **IP Address** and **Netmask** fields of the **IP settings** section. Then click the **Save** button.

 **IP settings**

Internet Protocol settings

IP Address: . . .

Netmask: . . .

2. By default, the DHCP server of the router is enabled. On the **DHCP server** tab you can change the parameters of the DHCP server. If you want to manually assign IP addresses to devices of your LAN, disable the DHCP server (select the **Disable** value from the **Mode** drop-down list).

Main | **DHCP server** | Static DHCP

Mode:

Start IP: . . .

End IP: . . .

Lease time (min):

3. After specifying the DHCP server settings, click the **Save** button.

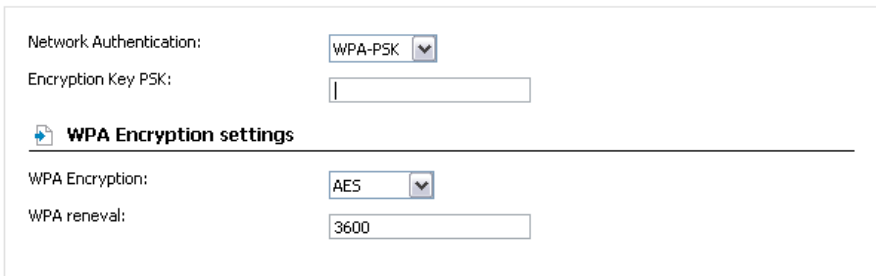
Configuring Wireless Network

By default, the wireless network of the router is open (it requires no password to access it). To avoid unauthorized access to your wireless local area network, change the default settings of the router.

Example of Wireless Settings

1. Go to the **Wi-Fi / Security settings** page.
2. Select the **WPA-PSK** value from the **Network Authentication** drop-down list.

Wi-Fi / Security settings



The screenshot shows the 'Wi-Fi / Security settings' page. It features a 'Network Authentication' dropdown menu set to 'WPA-PSK' and an empty 'Encryption Key PSK' text field. Below this is a section titled 'WPA Encryption settings' with a plus icon. Underneath, the 'WPA Encryption' dropdown is set to 'AES' and the 'WPA renewal' text field contains the value '3600'.

[Change](#)

3. Enter a key (a password that will be used to access your wireless network) in the **Encryption Key PSK** field. Use digits and Latin characters.
4. Select the **AES** value from the **WPA Encryption** drop-down list.
5. Click the **Change** button.



If you perform initial configuration of the router via Wi-Fi connection, note that immediately after changing the wireless default settings you will need to reconfigure the wireless connection using the newly specified settings.

Changing Administrator Password

It is highly recommended to change the administrator password used to access the web-based interface of the router upon initial configuration. This helps you to improve your network security.

1. Go to the **System / Administrator password** page.
2. Enter a new password for the administrator account in the **Password** and **Confirmation** fields.
3. Click the **Save** button.

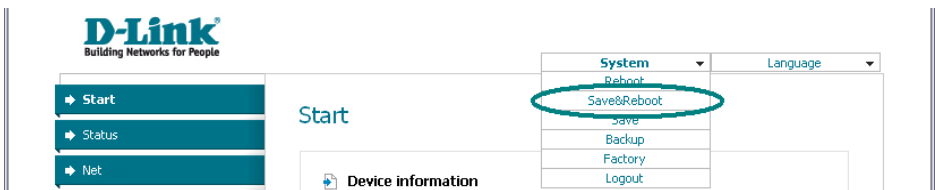


Remember or write down the new password for the administrator account. In case of losing the new password, you can access the web-based interface of the router only after restoring the factory default settings via the hardware Reset button. This procedure wipes out all settings that you have configured for your router.

Saving Settings to Non-volatile Memory

In order to avoid losing the new settings upon hardware reboot (accidental or intentional power-off of the device), it is recommended to save the settings to the non-volatile memory of the router.

Click the **Save&Reboot** line in the top-page menu displayed when the mouse pointer is over the **System** caption.



Wait until the router is rebooted. Now you can use it to access the Internet or access the web-based interface of the router to configure additional parameters (for detailed description of every page of the web-based interface, see the “*User Manual*” document).

TECHNICAL SUPPORT

You can find software updates and user documentation on our website.

D-Link provides its customers with free support within the product's warranty period.

Customers can contact the technical support group by phone or by e-mail/Internet.

FOR TELEPHONE NUMBERS AND ADDRESSES OF D-LINK OFFICES WORLDWIDE VISIT

<http://www.dlink.com/corporate/worldwideoffices/>