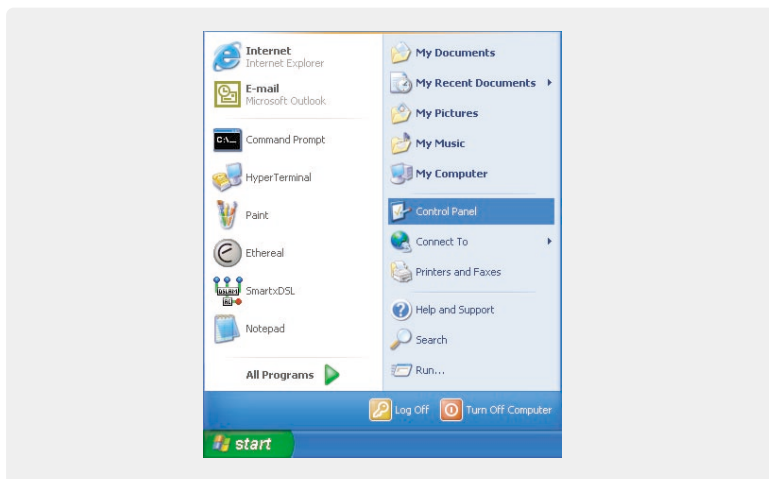


4.1.3 PC settings for Windows XP

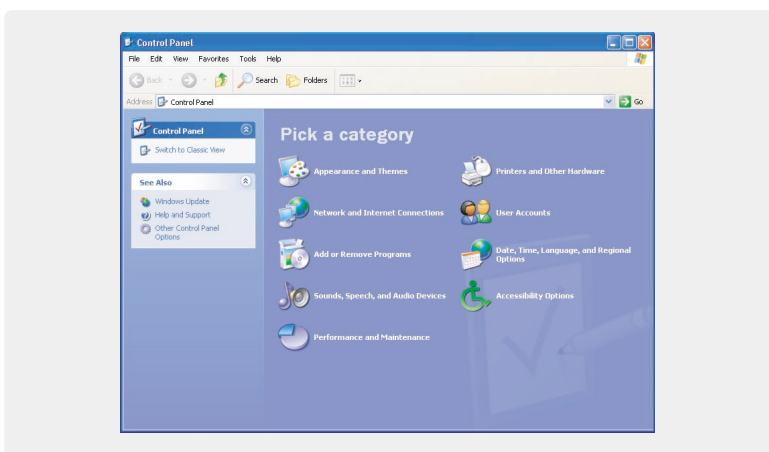
Step 1 of 7

- Click **Start** then **Control Panel**



Step 2 of 7

- Select **Network and Internet Connections**

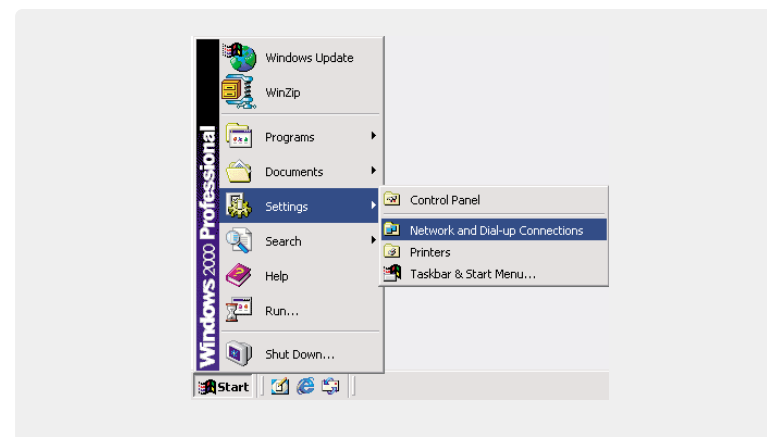


Note: If your control panel is set to Classic View, please click "Switch to Category View"

4.1.2 PC settings for Windows 2000

Step 1 of 5

- Click **Start** menu then select **Settings** then **Network and Dial-up Connections**.



Step 2 of 5

- Right click on **Local Area Connection**, then select **Properties**

