

# D-Link Quick Installation Guide

This product can be set up using any current web browser, i.e., Internet Explorer 6, Netscape Navigator 6.2.3, Mozilla or Firefox.

**DSL-524T**  
ADSL Router



## Before You Begin

Make sure you have all the necessary information and equipment on hand before beginning the installation.

## Check Your Package Contents



**DSL-524T ADSL Router**



**CD-ROM (containing User Manual)**



**Ethernet (CAT5 UTP) Cable**



**Telephone Cable**



**Power Adapter**



Using a power supply with a different voltage rating will damage and void the warranty for this product.

If any of the above items is missing, please contact your reseller.

# 1

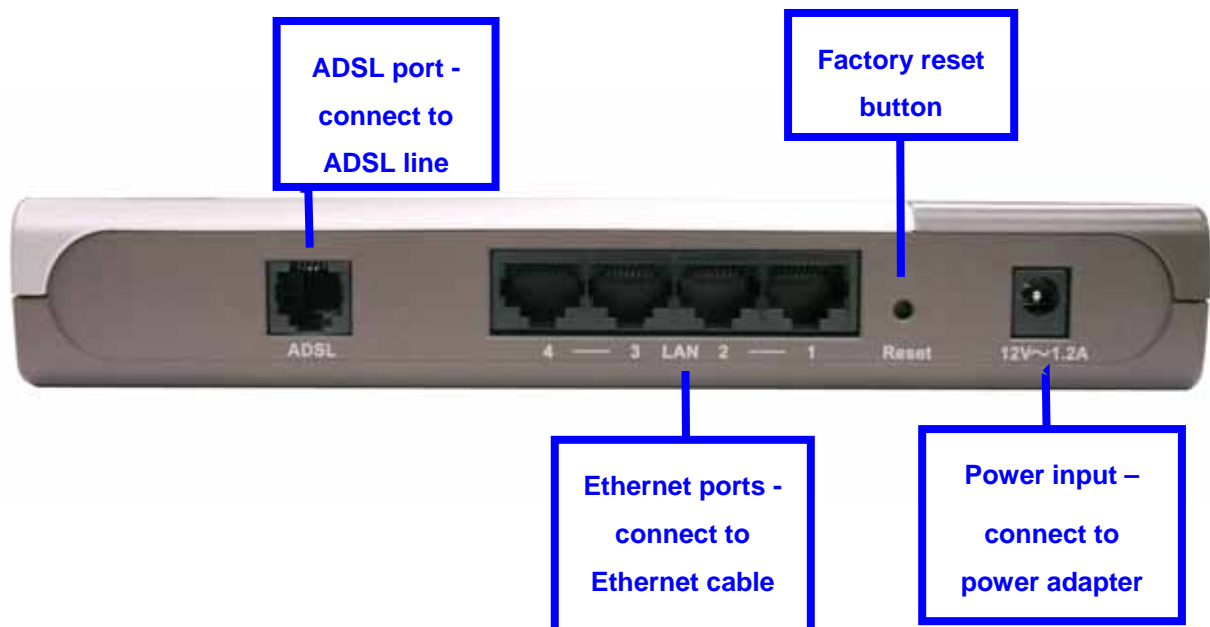
## Connecting the Router to Your Computer

- A.** First, connect the power adapter to the **receptor** at the back panel of the DSL-524T and then plug the other end of the power adapter to a wall outlet or power strip. The Power LED will turn **ON** to indicate proper operation.
- B.** Insert one end of the cable into any **Ethernet port** on the back panel of the DSL-524T and the other end of the cable to an **Ethernet Adapter** or available Ethernet port on your computer.
- C.** Insert one end of the **Telephone cable** into the **ADSL port** on the rear panel of the Router and insert the other end into the wall socket. If you need to install a low pass filter, follow the instructions of your ISP.

## Connecting the DSL-524T to your network

### Rear Panel Connections

All cable connections to the Router are made at the rear panel. Connect the power adapter here to power on the Router. Use the Reset button to restore the settings to the factory default values in the next chapter for instructions on using the reset button).

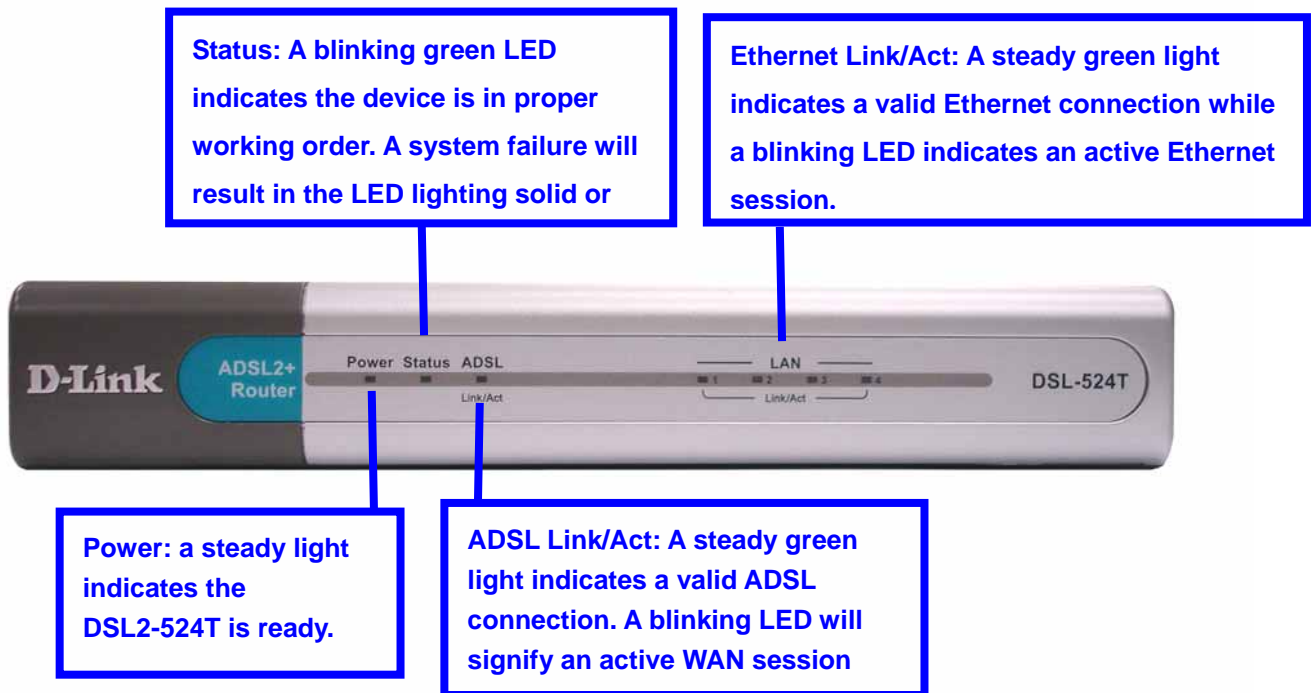


# 1

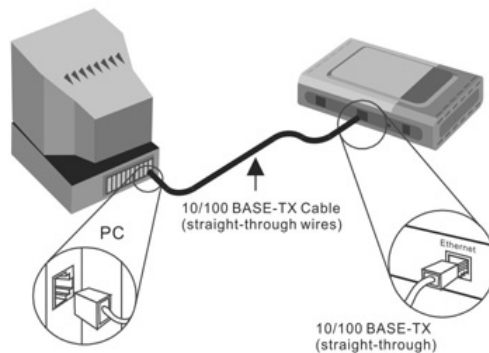
## Connecting the Router to Your Computer

### Front Panel Connections

The LED indicators on the front panel include the **Power**, **Status**, **ADSL** and **Ethernet** indicators. The ADSL and Ethernet indicators monitor link status and activity (Link/Act).

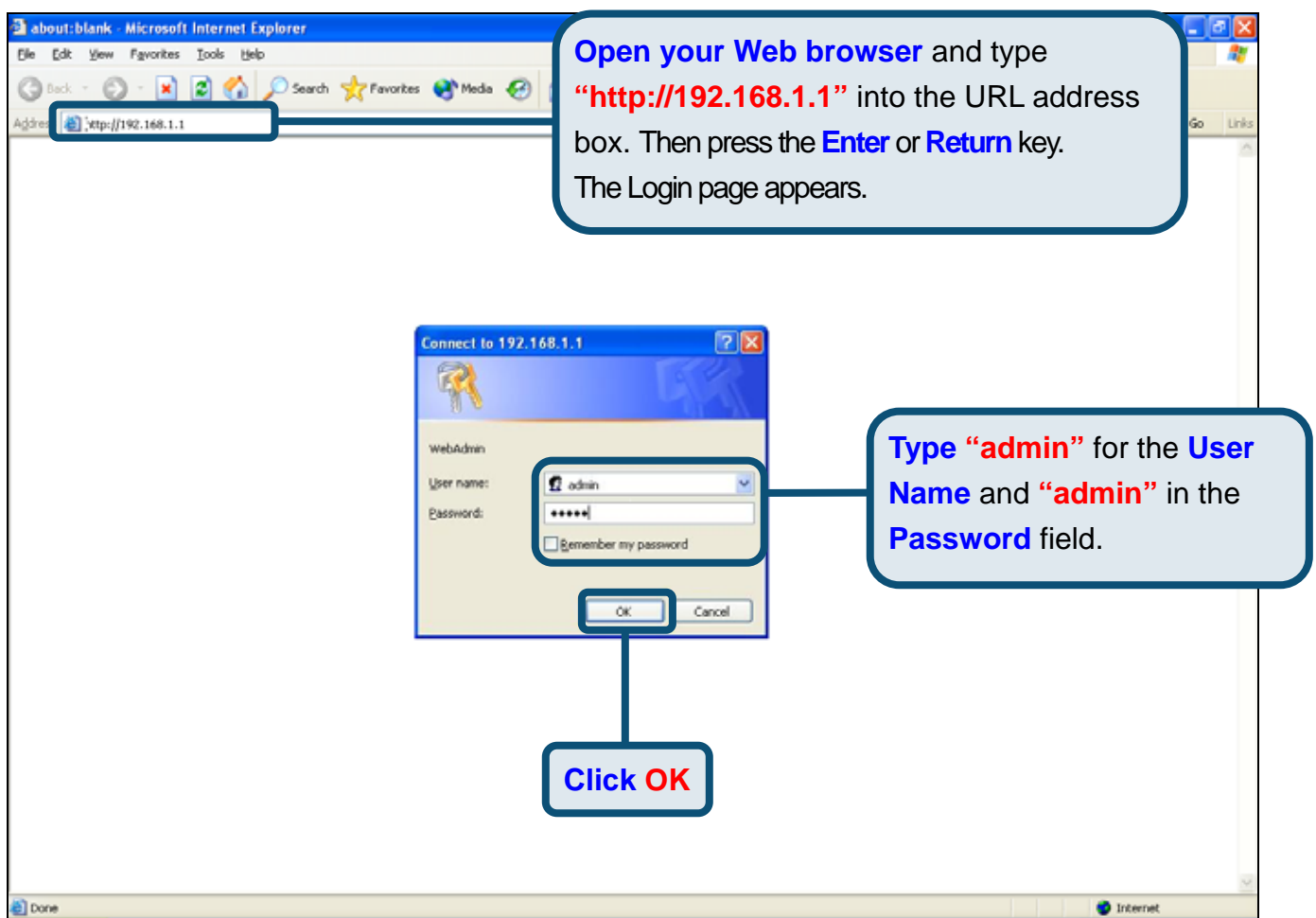


Your setup should resemble the one shown below.



## 2 Configuring the Router

To use your Web browser to access the web pages used to setup the Router, your computer must be configured to “**Obtain an IP address automatically**”, that is, you must change the IP network settings of your computer so that it is a **DHCP Client**. If you are using **Windows XP** and do not know how to change your network settings, skip ahead to **Appendix A** and read the instructions provided. You may also read the User Manual for instructions on changing IP settings for computers running Windows operating systems.



The screenshot shows a Microsoft Internet Explorer browser window with the address bar containing `http://192.168.1.1`. A callout box points to the address bar with the text: "Open your Web browser and type 'http://192.168.1.1' into the URL address box. Then press the Enter or Return key. The Login page appears." In the center of the browser window, a "Connect to 192.168.1.1" dialog box is open. It has a "WebAdmin" title and fields for "User name:" and "Password:". The "User name:" field contains "admin" and the "Password:" field contains "\*\*\*\*\*". There is a "Remember my password" checkbox which is unchecked. Below the fields are "OK" and "Cancel" buttons. A callout box points to the "User name:" and "Password:" fields with the text: "Type 'admin' for the User Name and 'admin' in the Password field." Another callout box points to the "OK" button with the text: "Click OK".

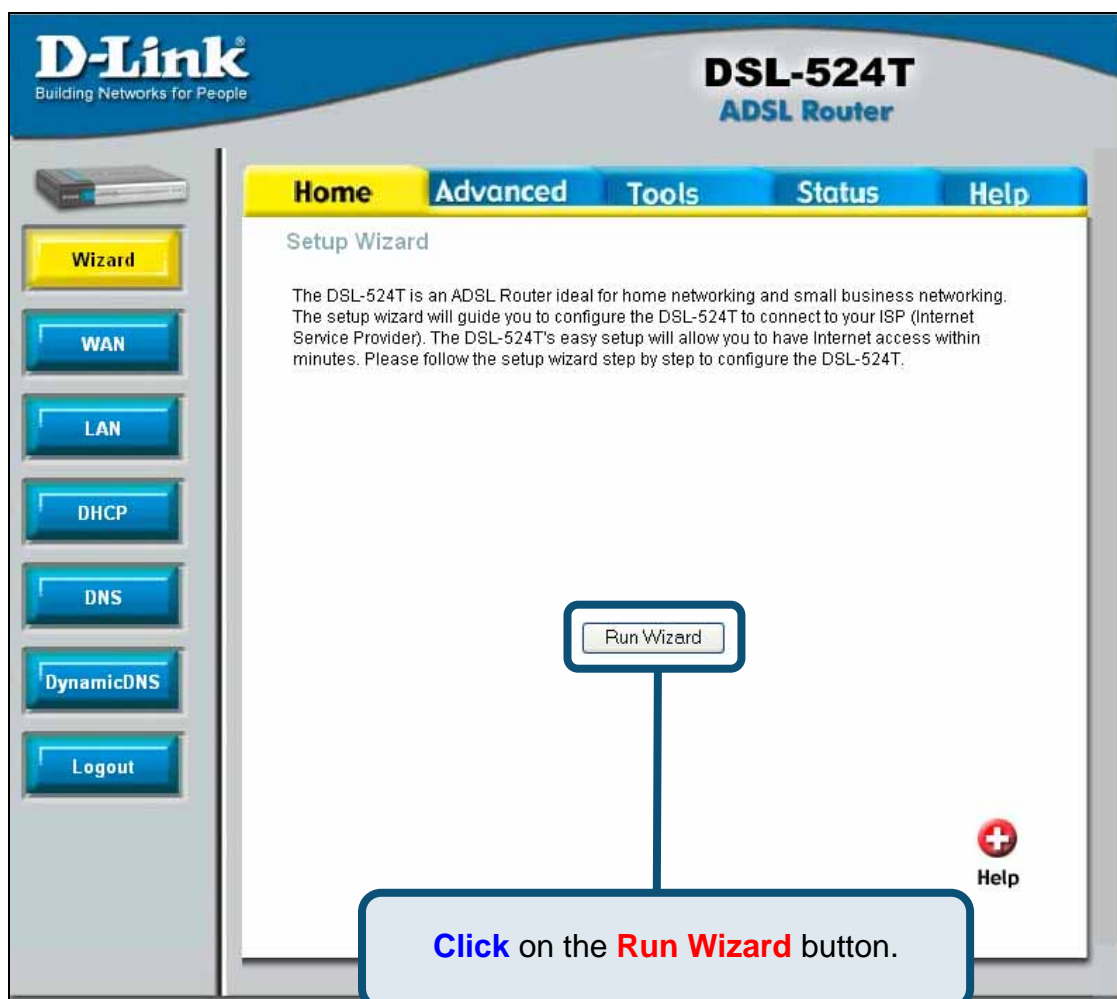
# 2

## Configuring the Router (continued)

Once you have logged in, the **Home** directory tab is prominent with the **Setup Wizard** menu displayed. Most users will be able to use the Setup Wizard to establish the ADSL connection to your ISP. To begin using the Setup Wizard, click on the **Run Wizard** button in the middle of the web page. A pop-up menu will appear. This pop-up menu is the **Setup Wizard**. The Setup Wizard procedure consists of four general steps:

1. Set the system password
2. Set the time zone
3. Set the Internet connection
4. Restart the Router

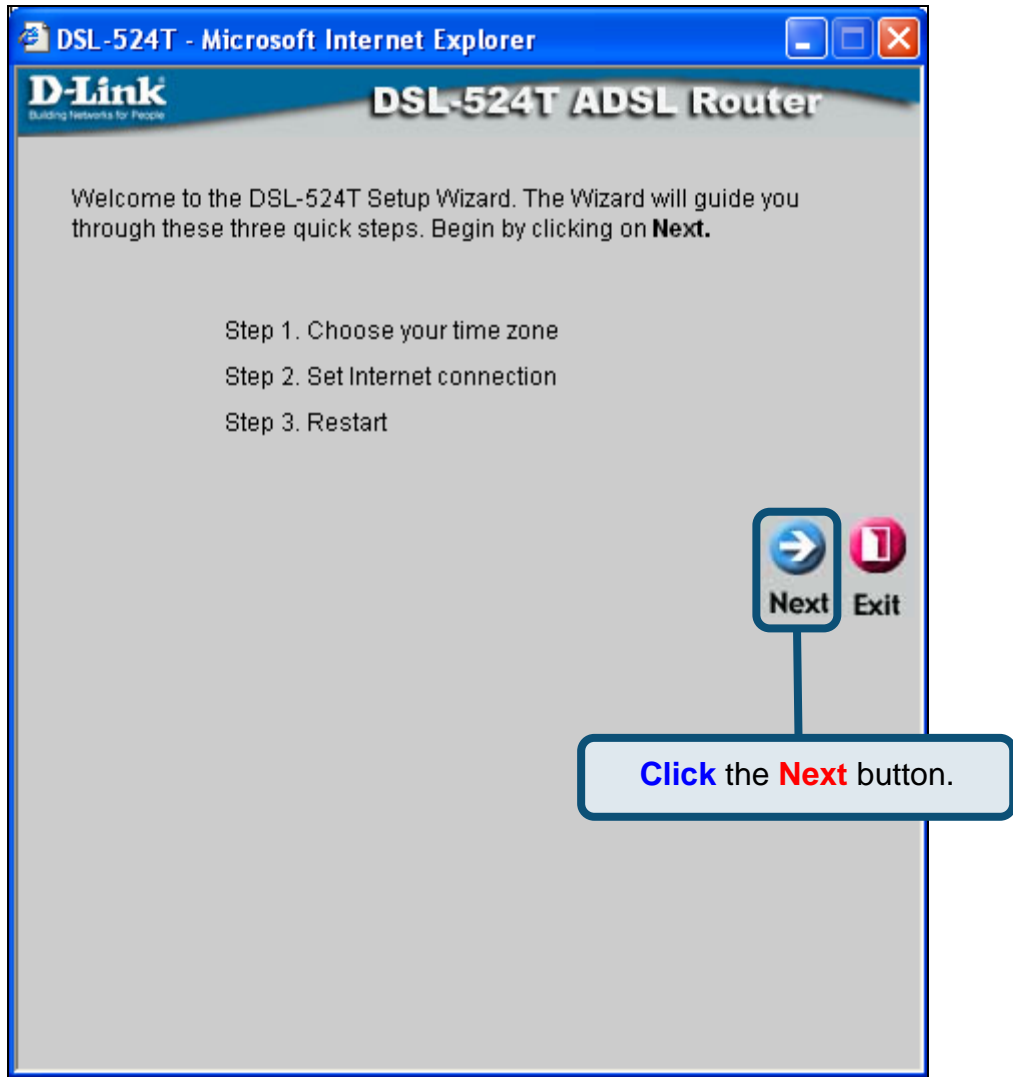
When you setup the Internet connection, you will need to enter information provided by your ISP. The type of information you need depends on the type of connection you are setting up.



# 2

## Configuring the Router (continued)

The first Setup Wizard menu lists a summary of the steps required to complete the setup. Click the **Next** button to begin setup.



# 2

## Configuring the Router (continued)

Now configure the **Time Zone** used for the Router's system clock. Select the appropriate time zone and **Daylight Saving Time** setting for your location.

DSL-524T - Microsoft Internet Explorer

**D-Link**  
Building Networks for People

**DSL-524T ADSL Router**

### Choose Time Zone

Select the appropriate time zone for your location and click **Next** to continue.

(GMT+08:00) Beijing, ChongQing, Urumqi

Back Next Exit

Select the **Time Zone** you are located in by using the pull-down menu.

Click the **Next** button.

# 2

## Configuring the Router (continued)

Next you will **Set the Internet Connection Type** for the WAN interface. Your ISP has given this information to you. If you do not know what type of connection to use, exit the Setup Wizard and contact your ISP for the information. The Setup wizard menu that appears when you click the **Next** button depends on what connection type you select.

**DSL-524T - Microsoft Internet Explorer**

**D-Link** Building Networks for People **DSL-524T ADSL Router**

### Select Internet Connection Type (WAN)

Select the connection type to connect to your ISP. Click **Next** to continue

- PPPoE/PPPoA  
Choose this option if your ISP uses PPPoE/PPPoA. (For most DSL users)
- Dynamic IP Address  
Choose this option to obtain an IP address automatically from your ISP.
- Static IP Address  
Choose this option to set static IP information provided to you by your ISP.
- Bridge Mode  
Choose this option if your ISP uses Bridge Mode.

Back Next Exit

Select the **Connection Type** used for your ADSL service.

Click the **Next** button.



# 2

## Configuring the Router (continued)

### PPPoE/PPPoA Connections

If you selected the PPPoE/PPPoA connection type in the previous menu, you will see the Setup Wizard menu pictured here. Type in the **Username** and **Password** used to identify and verify your account to the ISP. The **VPI** number and **VCI** number should not be changed unless you have been instructed to change them. Select the **Connection Type** used for encapsulation specific to your service. Click **Next** when you are ready to continue to the Setup Completed menu.

If you are not sure what **Connection Type**, **VPI** and **VCI** to use, please check with your ISP.

The screenshot shows the 'Set PPPoE / PPPoA' configuration page in a Microsoft Internet Explorer browser window. The page title is 'DSL-524T - Microsoft Internet Explorer' and the main heading is 'DSL-524T ADSL Router'. Below the heading is the sub-heading 'Set PPPoE / PPPoA'. The instructions on the page read: 'Enter the PPPoE/PPPoA information provided to you by your ISP. Click Next to continue.' The form contains the following fields: 'User Name' with the value 'username', 'Password' with masked characters '••••', 'VPI' with the value '8', 'VCI' with the value '35', and 'Connection Type' with a pull-down menu set to 'PPPoE LLC'. At the bottom of the form are three buttons: 'Back' (left arrow), 'Next' (right arrow), and 'Exit' (stop sign). Five callout boxes provide additional instructions: 1. A box on the left says 'Type the Username and Password for your ISP account.' with lines pointing to the User Name and Password fields. 2. A box on the right says 'If you have been told to change the VPI or VCI number, Type the new values.' with lines pointing to the VPI and VCI fields. 3. A box at the bottom left says 'Use the pull-down menu to choose the correct Connection Type. The user may choose between PPPoA VC-Mux, PPPoE LLC or PPPoA LLC, as instructed by your ISP.' with a line pointing to the Connection Type dropdown. 4. A box at the bottom right says 'Click the Next button. Skip ahead to the Setup Completed menu below.' with a line pointing to the Next button. 5. A box at the top right says 'Type the Username and Password for your ISP account.' with lines pointing to the User Name and Password fields.

# 2

## Configuring the Router (continued)

### Dynamic IP Address Connections

For this connection type, the user may choose **Bridged IP LLC** or **Bridged IP VC-Mux**. Both of these connections require the user to have additional software located on their computer to negotiate the connection with the ISP. Both **Bridged** modes will automatically set the network connections. If you selected the Dynamic IP Address connection type, select the **Connection Type** used for encapsulation and if you have been instructed to change the **VPI** number and **VCI** number, type in the new values. Click **Next** when you are ready to continue the Setup Completed menu.

If you have been told by your ISP, change the **VPI** or **VCI** number, **Type** the new values.

The **Cloned MAC Address** field is used to copy the MAC Address of your Ethernet Adapter to the router. Simply enter the **MAC Address** into the space provided and click the **Clone Mac Address** button.

Select the **Encapsulation** as **1483 Bridged IP LLC** or **1483 Bridged IP VcMux** as instructed by your ISP.

Click the **Next** button to skip ahead to the **Setup Completed** menu.

# 2

## Configuring the Router (continued)

### Bridged Connections

**Bridged** is used to set the Bridged mode for the Router. This window is for users who have software on their computer or other network device to take the connection from your ISP. You may change the PVC (Permanent Virtual Channel) settings and the Connection Type.

**DSL-524T - Microsoft Internet Explorer**

**D-link**  
Building Networks for People

**DSL-524T ADSL Router**

**Setting Bridge Mode**

Enter the bridge information provided to you by your ISP. Click **Next** to continue.

VPI: 8

VCI: 35

Connection Type: 1483 Bridged IP LLC

Back Next Exit

**If you have been told to change the **VPI** or **VCI** number, **Type** the new values.**

**Select the **Connection Type** as **1483 Bridged IP LLC** or **1483 Bridged IP VC-Mux** as instructed by your ISP.**

**Click the **Next** button. Skip ahead to the **Setup Completed** menu**

# 2

## Configuring the Router (continued)

### Static IP Connections

**Static IP** is used to set the Static IP mode for the Router. Static IP is used whenever a known static IP address is assigned. The accompanying information such as the Subnet mask and the gateway should also be specified in order to be able to connect. These are the servers would enable you to have access to other web servers. Information entered here must come from your ISP. You may change the PVC (Permanent Virtual Channel) settings and the Encapsulation.

**DSL-524T - Microsoft Internet Explorer**

**D-Link** Building Networks for People

**DSL-524T ADSL Router**

**Set Static IP Address**

Enter the static IP information provided to you by your ISP. Click **Next** to continue.

VPI: 8

VCI: 35

IP Address: 0.0.0.0

Subnet Mask: [ ]

ISP Gateway Address: [ ]

Primary DNS Address: 168.95.1.1

Secondary DNS Address: [ ]

Connection Type: 1483 Bridged IP LLC

Back Next Exit

**If you have been told to change the VPI or VCI number, Type the new values.**

**Type the IP addresses for the WAN IP Address, Subnet Mask, ISP Gateway Address, Primary DNS Address and/or Secondary DNS Address, as instructed by your ISP.**

**Select the Connection Type as 1483 Bridged IP LLC, 1483 Bridged IP VC-Mux, 1483 Routed IP LLC, 1483 Routed IP VC-Mux or IPoA, as instructed by your ISP.**

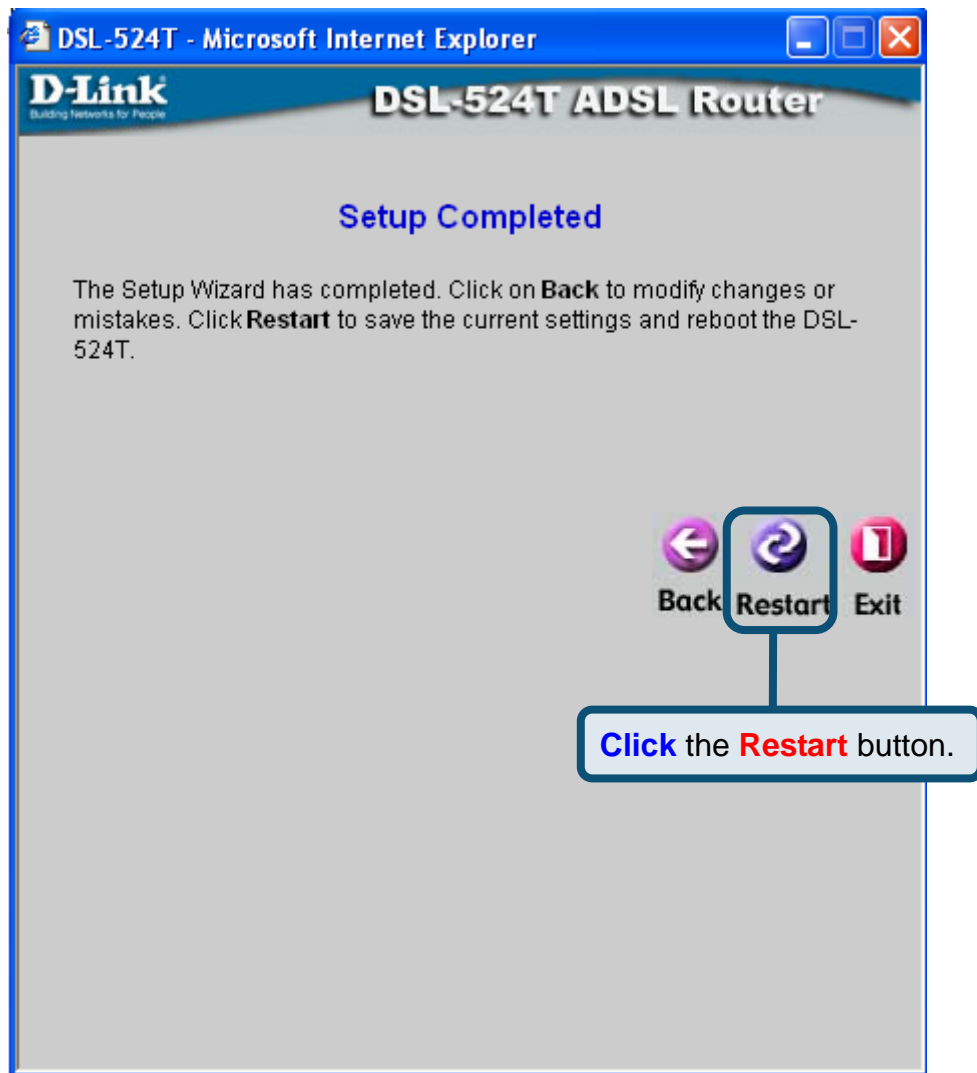
**Click the Next button. Skip ahead to the Setup Completed menu below.**

# 2

## Configuring the Router (continued)

### Setup Completed

All the settings for the ADSL connection are now completed. Click the **Restart** button to save the new settings and restart the Router. It will take about two minutes to restart the Router.

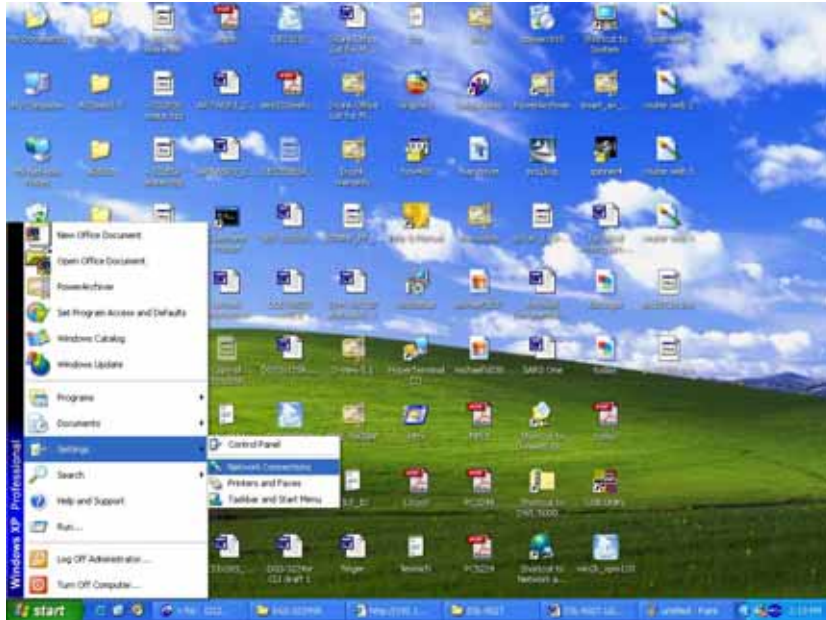


Click the **Exit** button when the message appears informing you that the “device has rebooted successfully”. You can now launch your web browser to access the Internet.

For additional settings or information, refer to the **Advanced**, **Tools**, or **Status** tabs on the web-management interface; or to the manual located on the CD-ROM.

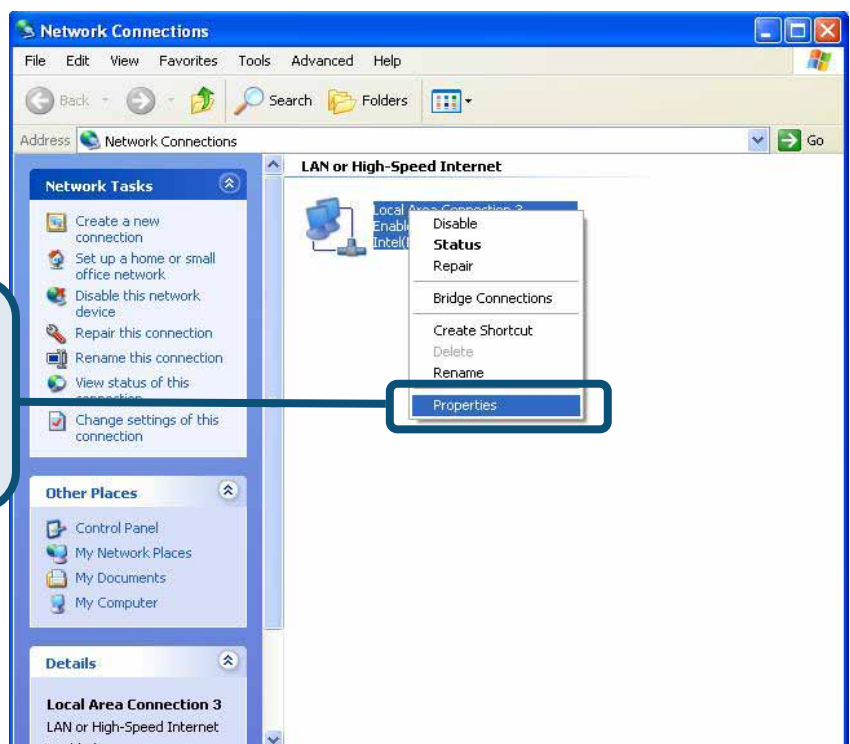
## Configuring IP Settings in Windows XP

Use the following steps to configure a computer running Windows XP to be a DHCP client.



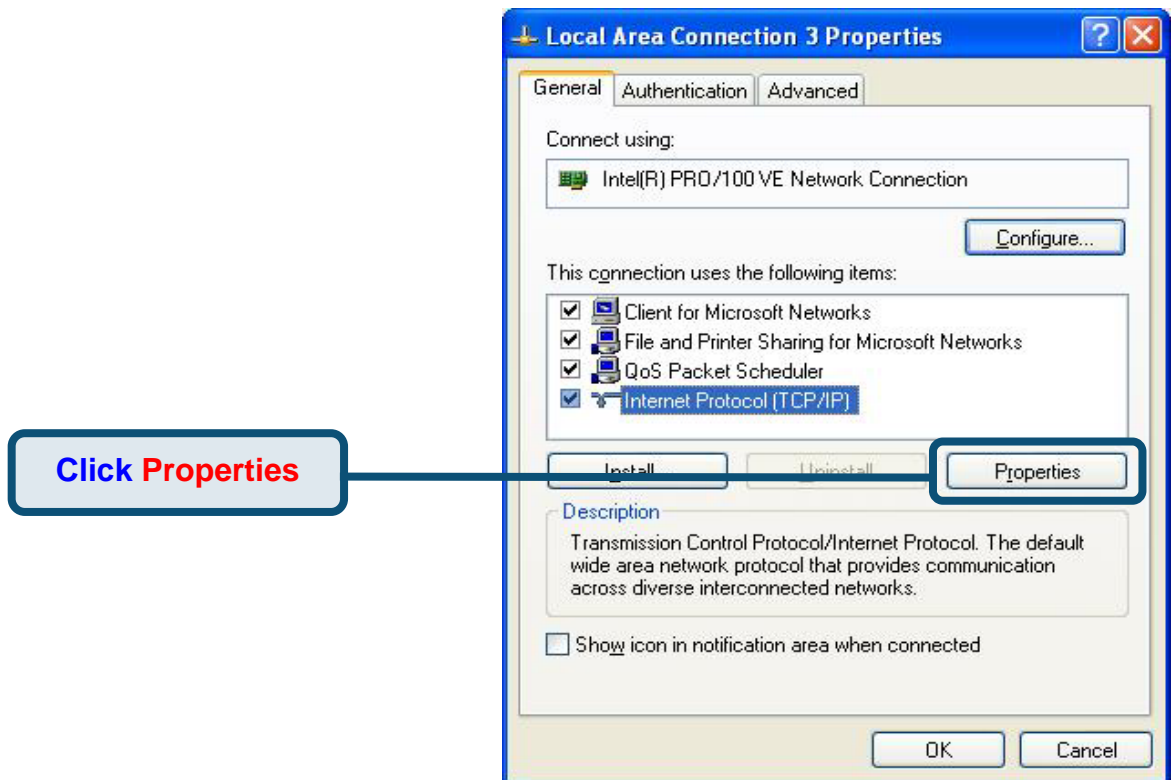
1. From the **Start** menu on your desktop, go to **Settings**, then click on **Network Connections**.
2. In the **Network Connections** window, right-click on **LAN** (Local Area Connection), then click **Properties**.

**Right-click** on the Local Area Connection icon and **Select** the **Properties** option from the pull-down menu.

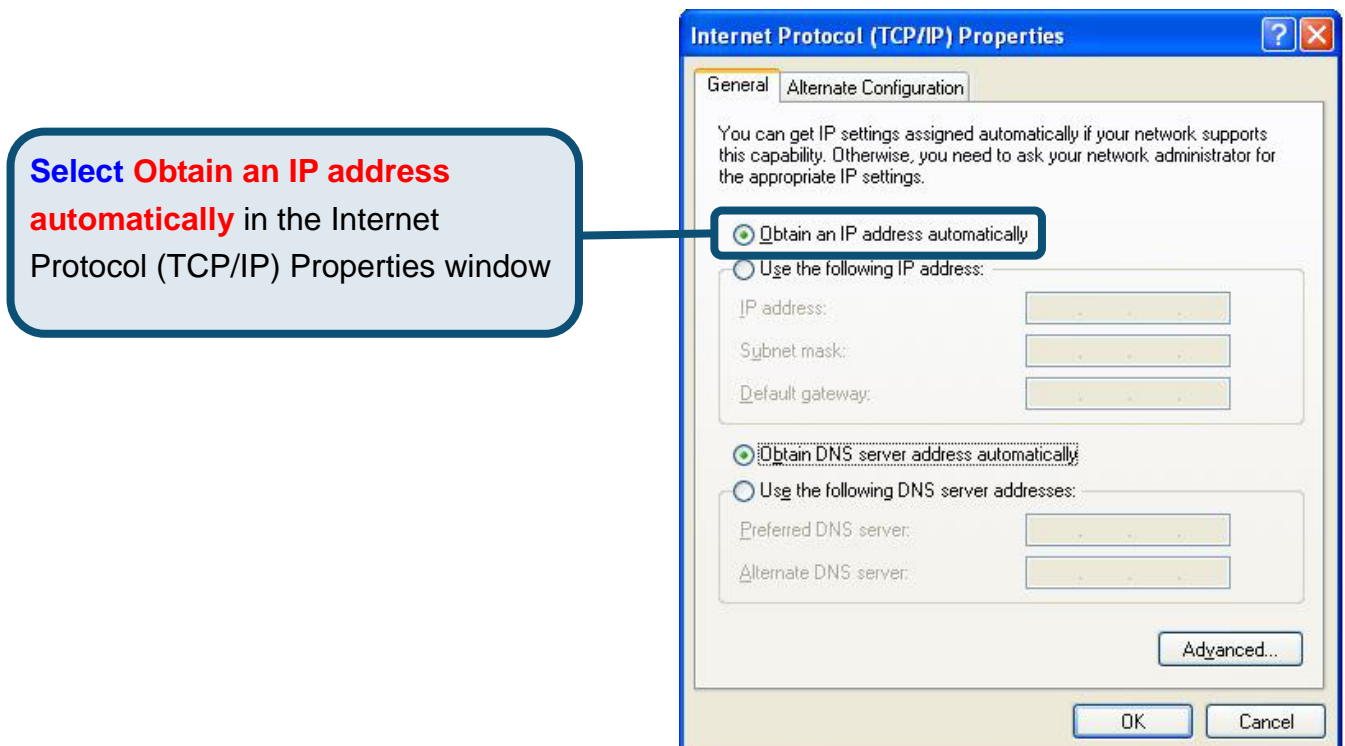




3. In the **General** tab of the **Local Area Connection Properties** menu, highlight **Internet Protocol (TCP/IP)** under “This connection uses the following items:” by clicking on it once. Click on the **Properties** button.



4. Select “**Obtain an IP address automatically**” by clicking once in the circle. Click the OK button.



Your computer is now ready to use the Router’s DHCP server.

## Technical Support

You can find software updates and user documentation on the D-Link websites.

D-Link provides free technical support for customers within Canada, the United Kingdom, and Ireland.

Customers can contact D-Link technical support through our websites, or by phone.

### **For Customers within The United Kingdom & Ireland:**

#### ***D-Link UK & Ireland Technical Support over the Telephone:***

08456 12 0003 (United Kingdom)

+44 8456 12 0003 (Ireland)

Monday to Friday 8:00 am to 10:00 pm GMT

Sat & Sun 10.00 am to 7.00 pm GMT

#### ***D-Link UK & Ireland Technical Support over the Internet:***

<http://www.dlink.co.uk>

<ftp://ftp.dlink.co.uk>

### **For Customers within Canada:**

#### ***D-Link Canada Technical Support over the Telephone:***

**D-Link®**  
Building Networks for People