



DSL-2750U

**Wireless ADSL2+ Router with
3G/LTE/Ethernet WAN Support
and USB Port**

BEFORE YOU BEGIN

Delivery Package

- Router DSL-2750U
- Power adapter DC 12V/1A
- RJ-11 telephone cable
- Ethernet cable
- Splitter
- “*Quick Installation Guide*” (brochure).

If any of the items are missing, please contact your reseller.

The “*User Manual*” and “*Quick Installation Guide*” documents are available on D-Link website (see www.dlink.ru).



Using a power supply with a different voltage rating than the one included will cause damage and void the warranty for this product.


Default Settings

IP address of wireless router	192.168.1.1
Username (login)	admin
Password	admin
Name of wireless network (SSID)	DSL-2750U
Network key (PSK)	see WPS PIN on the barcode label on the bottom panel of the device

System Requirements and Equipment

- A computer with any operating system that supports a web browser.
- A web browser to access the web-based interface of the router:
 - Apple Safari 8 and later
 - Google Chrome 48 and later
 - Microsoft Internet Explorer 10 and later
 - Microsoft Edge 20.10240 and later
 - Mozilla Firefox 44 and later
 - Opera 35 and later.
- A NIC (Ethernet or Wi-Fi adapter) to connect to the router.
- An 802.11b, g, or n Wi-Fi adapter to create a wireless network.
- A USB modem (when it is necessary to connect to the Internet via mobile operators' networks)¹.

Your USB modem should be equipped with an active SIM card of your operator.

 Some operators require subscribers to activate their USB modems prior to using them. Please, refer to connection guidelines provided by your operator when concluding the agreement or placed on its website.

For some models of USB modems, it is required to disable the PIN code check on the SIM card prior to connecting the USB modem to the router.

¹ Contact your operator to get information on the service coverage and fees.

CONNECTING TO PC

PC with Ethernet Adapter

1. Make sure that your PC is powered off.
2. Connect an Ethernet cable between any of four Ethernet ports located on the back panel of the router and the Ethernet port of your PC.
3. ***To connect via USB modem:*** connect your USB modem to the USB port² located on the back panel of the router.



In some cases you will need to reboot the router after connection of the USB modem.

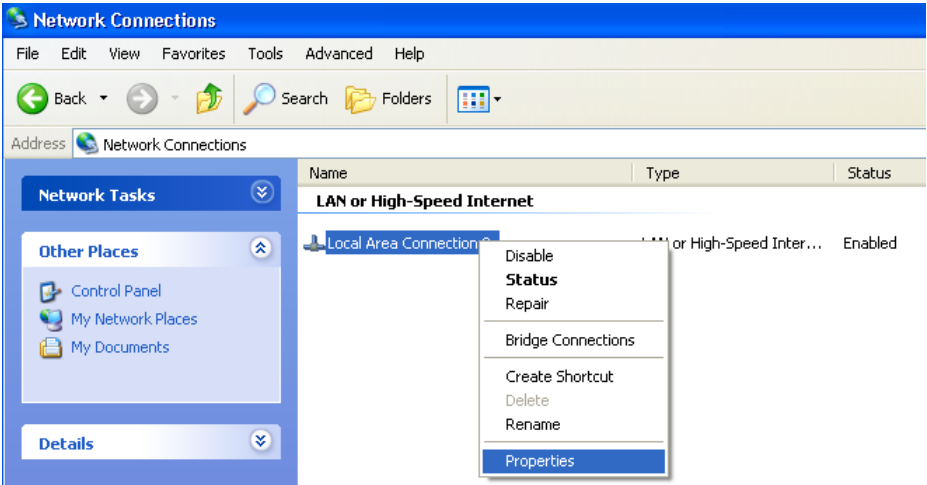
4. ***To connect the router to a DSL line:*** connect a phone cable between the DSL port of the router and the **ADSL OUT** port of the splitter. Connect your phone to the **PHONE** port of the splitter. Then connect another phone cable between a phone jack and the **ADSL IN** port of the splitter.
5. ***To connect the router to an Ethernet line:*** run the Initial Configuration Wizard and select the router's LAN port that will be used as the WAN port. Then connect the Ethernet cable between the selected Ethernet port located on the back panel of the router and the Ethernet line.
6. Connect the power cord to the power connector port on the back panel of the router, then plug the power adapter into an electrical outlet or power strip.
7. Turn on the router by pressing the **ON/OFF** button on its back panel.
8. Turn on your PC and wait until your operating system is completely loaded.

Now you should configure your PC to obtain an IP address automatically (as DHCP client).

² It is recommended to use a USB extension cable to connect a USB modem to the router.

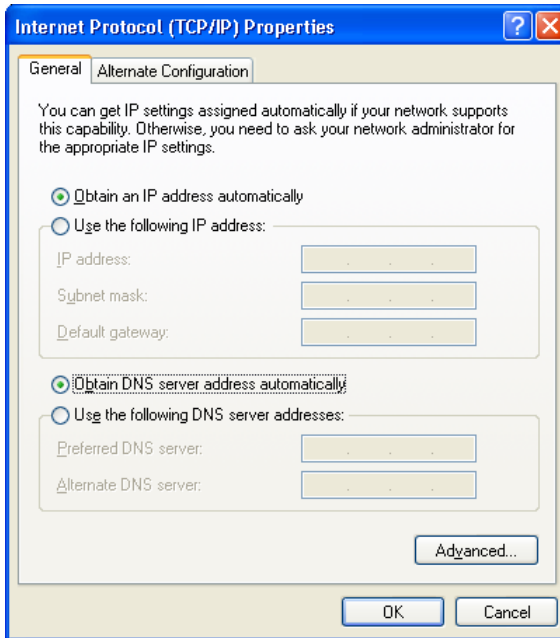
Obtaining IP Address Automatically in OS Windows XP

1. Click the **Start** button and proceed to the **Control Panel > Network and Internet Connections > Network Connections** window.
2. In the **Network Connections** window, right-click the relevant **Local Area Connection** icon and select the **Properties** line in the menu displayed.



3. In the **Local Area Connection Properties** window, on the **General** tab, select the **Internet Protocol (TCP/IP)** line. Click the **Properties** button.

4. Select the **Obtain an IP address automatically** and **Obtain DNS server address automatically** radio buttons. Click the **OK** button.

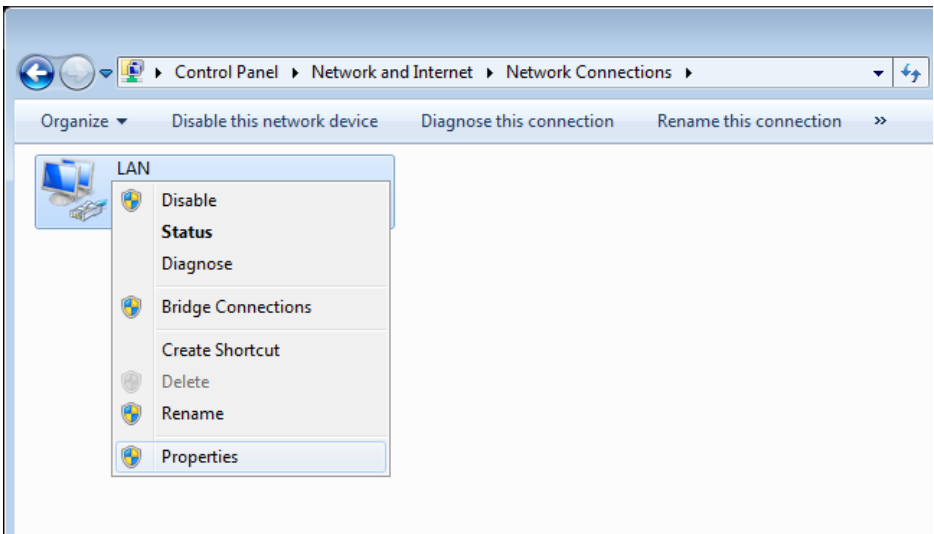


5. Click the **OK** button in the connection properties window.

Now your computer is configured to obtain an IP address automatically.

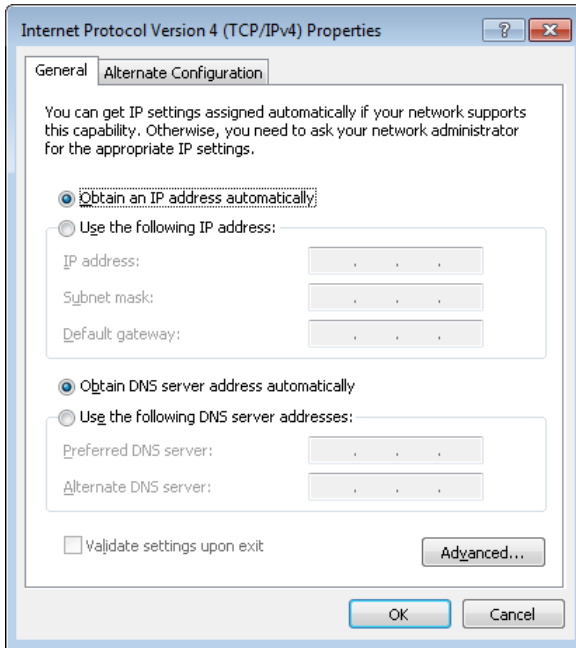
Obtaining IP Address Automatically in OS Windows 7

1. Click the **Start** button and proceed to the **Control Panel** window.
2. Select the **Network and Sharing Center** section. (If the Control Panel has the category view (the **Category** value is selected from the **View by** drop-down list in the top right corner of the window), choose the **View network status and tasks** line under the **Network and Internet** section.)
3. In the menu located on the left part of the window, select the **Change adapter settings** line.
4. In the opened window, right-click the relevant **Local Area Connection** icon and select the **Properties** line in the menu displayed.



5. In the **Local Area Connection Properties** window, on the **Networking** tab, select the **Internet Protocol Version 4 (TCP/IPv4)** line. Click the **Properties** button.

6. Select the **Obtain an IP address automatically** and **Obtain DNS server address automatically** radio buttons. Click the **OK** button.



7. Click the **OK** button in the connection properties window.
Now your computer is configured to obtain an IP address automatically.

PC with Wi-Fi Adapter

1. **To connect via USB modem:** connect your USB modem to the USB port³ located on the back panel of the router.

! In some cases you will need to reboot the router after connection of the USB modem.

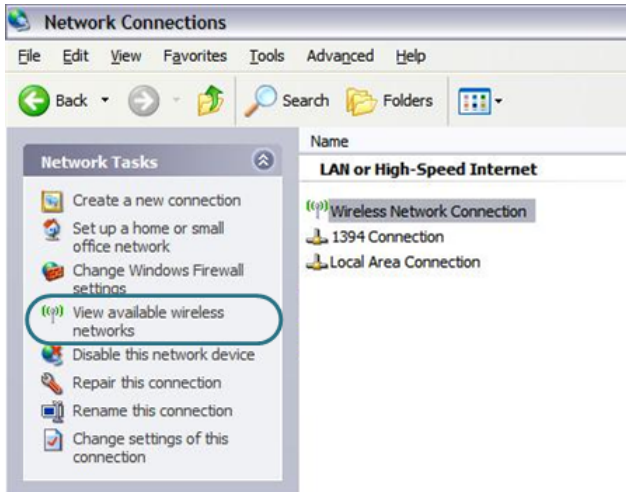
2. **To connect the router to a DSL line:** connect a phone cable between the DSL port of the router and the **ADSL OUT** port of the splitter. Connect your phone to the **PHONE** port of the splitter. Then connect another phone cable between a phone jack and the **ADSL IN** port of the splitter.
3. **To connect the router to an Ethernet line:** run the Initial Configuration Wizard and select the router's LAN port that will be used as the WAN port. Then connect the Ethernet cable between the selected Ethernet port located on the back panel of the router and the Ethernet line.
4. Connect the power cord to the power connector port on the back panel of the router, then plug the power adapter into an electrical outlet or power strip.
5. Turn on the router by pressing the **ON/OFF** button on its back panel.
6. Turn on your PC and wait until your operating system is completely loaded.
7. Turn on your Wi-Fi adapter. As a rule, modern notebooks with built-in wireless NICs are equipped with a button or switch that turns on/off the wireless adapter (refer to your PC documents). If your PC is equipped with a pluggable wireless NIC, install the software provided with your Wi-Fi adapter.

Now you should configure your Wi-Fi adapter.

³ It is recommended to use a USB extension cable to connect a USB modem to the router.

Configuring Wi-Fi Adapter in OS Windows XP

1. Click the **Start** button and proceed to the **Control Panel > Network and Internet Connections > Network Connections** window.
2. Select the icon of the wireless network connection and make sure that your Wi-Fi adapter is on.



3. Search for available wireless networks.
4. In the opened **Wireless Network Connection** window, select the wireless network **DSL-2750U** and click the **Connect** button.
5. In the opened window, enter the network key (see WPS PIN on the barcode label on the bottom panel of the device) in the **Network key** and **Confirm network key** fields and click the **Connect** button.

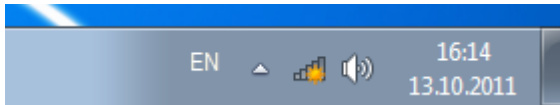
After that the **Wireless Network Connection Status** window appears.



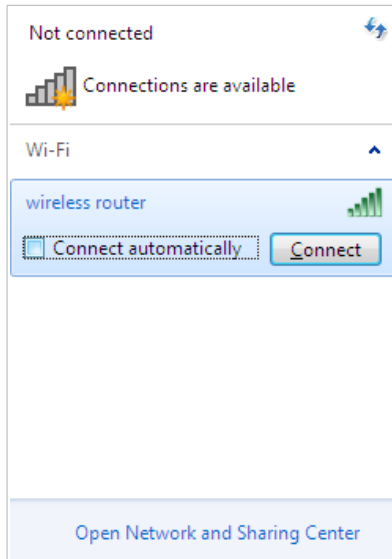
If you perform initial configuration of the router via Wi-Fi connection, note that immediately after changing the wireless default settings of the router you will need to reconfigure the wireless connection using the newly specified settings.

Configuring Wi-Fi Adapter in OS Windows 7

1. Click the **Start** button and proceed to the **Control Panel** window.
2. Select the **Network and Sharing Center** section. (If the Control Panel has the category view (the **Category** value is selected from the **View by** drop-down list in the top right corner of the window), choose the **View network status and tasks** line under the **Network and Internet** section.)
3. In the menu located on the left part of the window, select the **Change adapter settings** line.
4. In the opened window, select the icon of the wireless network connection and make sure that your Wi-Fi adapter is on.
5. To open the list of available wireless networks, select the icon of the wireless network connection and click the **Connect To** button or left-click the network icon in the notification area located on the right side of the taskbar.



- In the opened window, in the list of available wireless networks, select the wireless network **DSL-2750U** and click the **Connect** button.



- In the opened window, enter the network key (see WPS PIN on the barcode label on the bottom panel of the device) in the **Security key** field and click the **OK** button.
- Wait for about 20-30 seconds. After the connection is established, the network icon will be displayed as the signal level scale.



If you perform initial configuration of the router via Wi-Fi connection, note that immediately after changing the wireless default settings of the router you will need to reconfigure the wireless connection using the newly specified settings.

CONFIGURING ROUTER

Connecting to Web-based Interface

Start a web browser. In the address bar of the web browser, enter the IP address of the router (by default, **192.168.1.1**) or its domain name (by default, **dlinkrouter.local**) with a dot at the end. Press the **Enter** key.



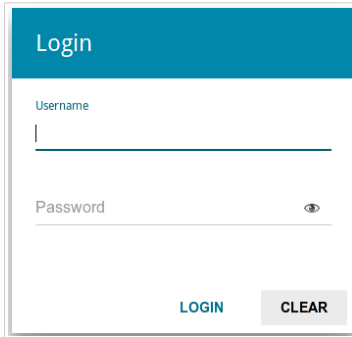
! If the error “*The page cannot be displayed*” (or “*Unable to display the page*”/“*Could not connect to remote server*”) occurs upon connecting to the web-based interface of the router, make sure that you have properly connected the router to your computer.

If the device has not been configured previously or the default settings have been restored, after access to the web-based interface the Initial Configuration Wizard opens (see the **Initial Configuration Wizard** section, page 17).

Dear Customer! It's the first time the device is turned on. Please configure the device in order to use the Internet access services.
To run the Wizard, click the "Start" button.

START

If you configured the device previously, after access to the web-based interface the login page opens. Enter the username (**admin**) in the **Username** field and the password you specified in the **Password** field, then click the **LOGIN** button.



The screenshot shows a login form with a blue header containing the word "Login". Below the header, there are two input fields: "Username" and "Password". The "Username" field has a vertical cursor at the beginning. The "Password" field has a small eye icon to its right, indicating a toggle for password visibility. At the bottom of the form, there are two buttons: "LOGIN" and "CLEAR".

The **Summary** page displays general information on the router and its software.

The screenshot shows the 'Summary' page of the DSL-2750U router's configuration interface. The page is divided into several sections:

- Device Information:**
 - Model: DSL-2750U
 - Hardware revision: U3
 - Firmware version: 3.0.1
 - Build time: Tue Feb 20 17:19:01 MSK 2018
 - Vendor: D-Link Russia
 - Support: support@dlink.ru
 - Summary: Root filesystem image for DSL-2750U
 - Uptime: 0 days 00:20:32
- LAN:**
 - LAN IPv4: 192.168.1.1
 - LAN IPv6: fd01::1/64
 - Wireless connections: -
 - Wired connections: 1
- LAN Ports:**
 - LAN1: Off
 - LAN2: Off
 - LAN3: On
 - LAN4: On
- DSL Status:**
 - Line status: Off
- USB Devices:**
 - No connected devices
- Wi-Fi 2.4 GHz:**
 - Status: On
 - Broadcasting: On
 - Additional networks: 0
 - Network name (SSID): DSL-2750U-80ff
 - Security: WPA2-PSK
- WAN IPv4:**
 - Connection type: Dynamic IPv4
 - Status: Off
- Yandex.DNS:**
 - Yandex.DNS: Enable
 - Safe: 8 devices
 - Child: 0 devices
 - Protection off: 0 devices

The **Home** page displays links to the most frequently used pages with device's settings.

Summary Home

Welcome to configuration interface of D-Link device!

This page contains links to interface sections which are often accessed after the initial configuration. Complete list of sections is available in the menu.

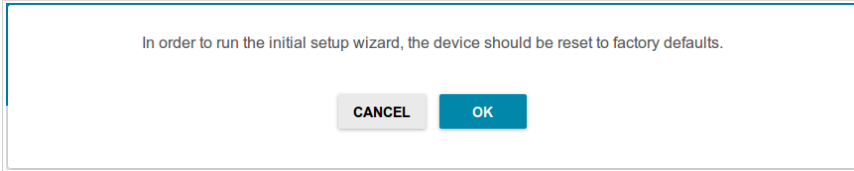
- URL Filter**
 You can block access to unwanted web sites by URL addresses.
- DNS Yandex.DNS**
 Fast DNS service from Yandex with additional security features.
- Restriction of Wireless Clients Access**
 You can block Wi-Fi access to the device for certain clients.
- Connection of Multimedia Devices**
 Select ports to connect multimedia devices.
- DLNA Server**
 On the DLNA page, you can enable the built-in DLNA server of the router to provide access to the USB storage for users of your LAN.
- Print Server**
 Configuration of a printer connected to the USB port of the device for shared use of the LAN users.
- Torrent Client**
 You can use your device to exchange files via the BitTorrent protocol, if you connect an external storage and configure the torrent client.
- Device Information**
 The device's information summary.
- Wi-Fi Configuration**
 Configuration of basic Wi-Fi parameters. Here you can configure the network name, security settings, etc.

The web-based interface of the router is multilingual. You can select the needed language upon the initial configuration of the web-based interface of the router or in the **System / Configuration** section of the menu.

Other settings of the router are available in the menu in the left part of the page. Go to the relevant section and select the needed page or run the wizard in the **Initial Configuration** section.

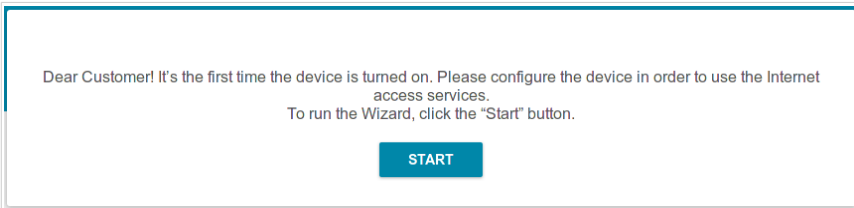
Initial Configuration Wizard

In order to start the Initial Configuration Wizard manually, go to the **Initial Configuration** section.

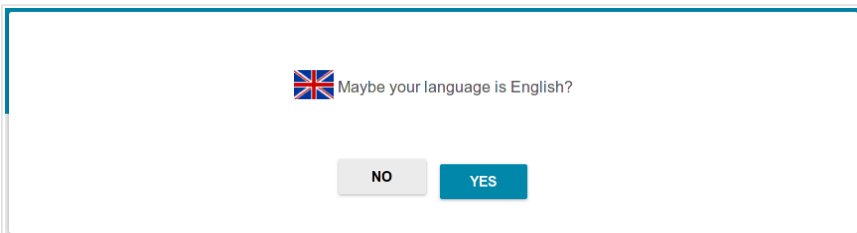


Click the **OK** button and wait until the factory default settings are restored. Then click the **START** button.

If the device has not been configured previously or the default settings have been restored, the Initial Configuration Wizard starts automatically upon access to the web-based interface or upon opening a web site on the Internet.



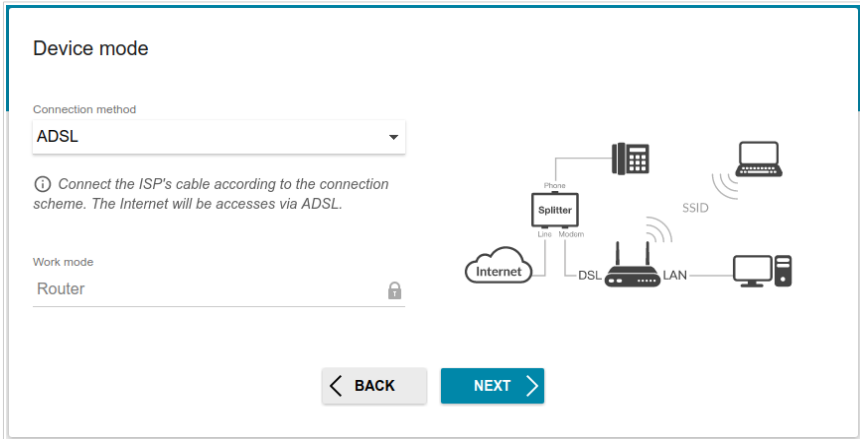
1. Click **YES** in order to leave the current language of the web-based interface or click **NO** to select another language.



2. On the next page, click the **CONTINUE** button.

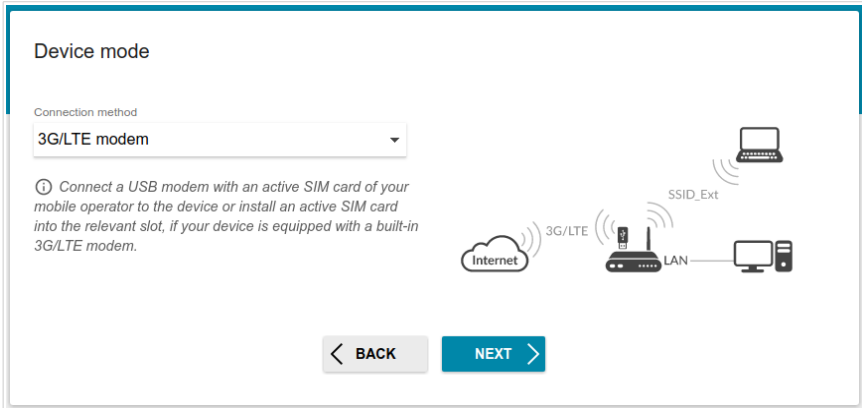
Selecting Operation Mode

In order to connect your device to an ADSL line, on the **Device mode** page, from the **Connection method** list, select the **ADSL** value. In this mode you can configure a WAN connection, set your own settings for the wireless network, configure LAN ports to connect an STB or VoIP phone, and set your own password for access to the web-based interface of the device.



In order to connect your device to an Ethernet line, on the **Device mode** page, from the **Connection method** list, select the **Ethernet (LAN)** value. In this mode you can configure a LAN port as a WAN port, configure a WAN connection, set your own settings for the wireless network, configure LAN ports to connect an STB or VoIP phone, and set your own password for access to the web-based interface of the device.

In order to connect your device to the network of a 3G or LTE operator, on the **Device mode** page, from the **Connection method** list, select the **3G/LTE modem** value. In this mode you can configure a 3G/LTE WAN connection, set your own settings for the wireless network, and set your own password for access to the web-based interface of the device.

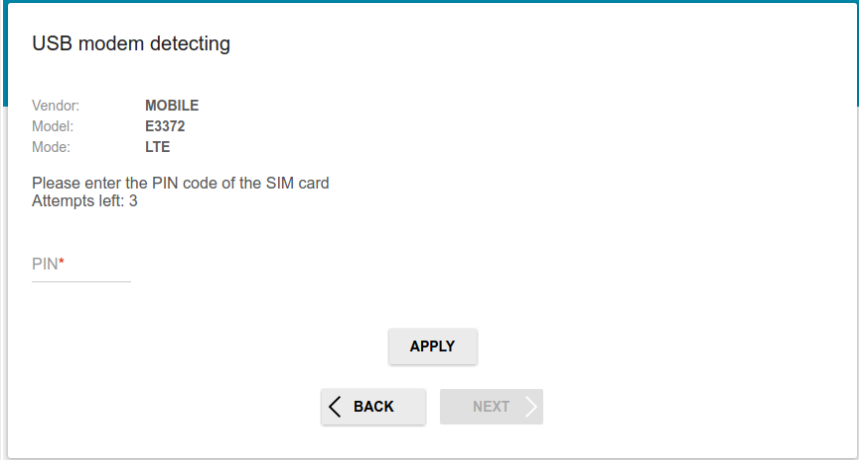


When the operation mode is selected, click the **NEXT** button.

Creating 3G/LTE WAN Connection

This configuration step is available for the **3G/LTE modem** mode.

1. If the PIN code check is enabled for the SIM card inserted into your USB modem, enter the PIN code in the **PIN** field and click the **APPLY** button.



USB modem detecting

Vendor: MOBILE
Model: E3372
Mode: LTE

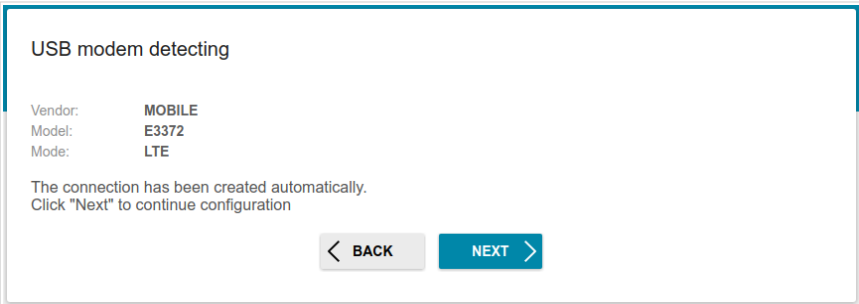
Please enter the PIN code of the SIM card
Attempts left: 3

PIN*

APPLY

< BACK NEXT >

2. Please wait while the router automatically creates a WAN connection for your mobile operator.



USB modem detecting

Vendor: MOBILE
Model: E3372
Mode: LTE

The connection has been created automatically.
Click "Next" to continue configuration

< BACK NEXT >

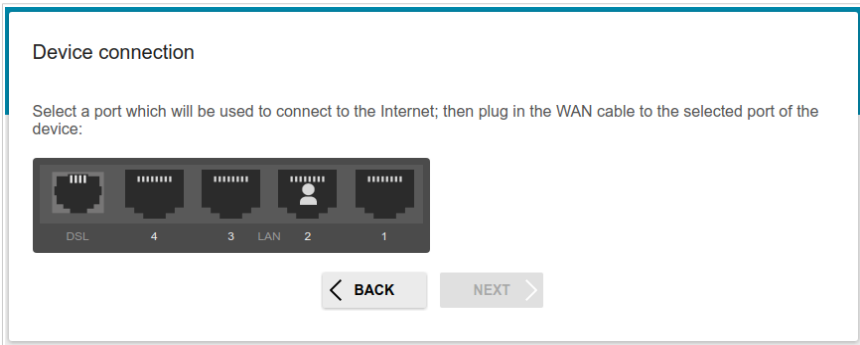
3. Click the **NEXT** button.

If the router failed to create a WAN connection automatically, click the **CONFIGURE MANUALLY** button. On the **Internet connection type** page, configure all needed settings and click the **NEXT** button.

Selecting Ethernet WAN Port

This configuration step is available for the **Ethernet (LAN)** connection method.

1. On the **Device connection** page, select a LAN port that will be used as the WAN port.



2. Click the **NEXT** button.

Configuring Ethernet WAN Connection

! You should configure your WAN connection in accordance with data provided by your Internet service provider (ISP). Make sure that you have obtained all necessary information prior to configuring your connection. Otherwise contact your ISP.


1. On the **Internet connection type** page, from the **Connection type** list, select the connection type used by your ISP and fill in the fields displayed on the page.

Static IPv4: Fill in the following fields: **IP address**, **Netmask**, **Gateway IP address**, and **DNS IP address**.

IP address*	<input type="text"/>
Netmask*	<input type="text"/>
Gateway IP address*	<input type="text"/>
DNS IP address*	<input type="text"/>

Static IPv6: Fill in the following fields: **IP address**, **Prefix**, and **Gateway IP address**.

IP address*	<input type="text"/>
Prefix*	<input type="text"/>
Gateway IP address*	<input type="text"/>

PPPoE, IPv6 PPPoE, PPPoE Dual Stack: Enter authorization data provided by your ISP (the username (login) in the **Username** field and the password in the **Password** field). Click the **Show** icon () to display the entered password. If authorization is not required, select the **Without authorization** checkbox.

Without authorization

Username*

Password* 

2. If your ISP uses MAC address binding, select the **Clone MAC address of your device** checkbox.
3. If the Internet access is provided via a VLAN channel, select the **Use VLAN** checkbox and fill in the **VLAN ID** field.

Clone MAC address of your device
In some ISP's networks, it is required to register a certain MAC address in order to get access to the Internet.
 Use VLAN
Select the checkbox if the Internet access is provided via a VLAN channel.

VLAN ID*

4. Click the **NEXT** button.

Configuring ADSL WAN Connection

! You should configure your WAN connection in accordance with data provided by your Internet service provider (ISP). Make sure that you have obtained all necessary information prior to configuring your connection. Otherwise contact your ISP.


1. On the **Internet connection type** page, from the **Connection type** list, select the connection type used by your ISP and fill in the fields displayed on the page.

Static IPv4, IPoA: Fill in the following fields: **IP address**, **Netmask**, **Gateway IP address**, and **DNS IP address**.

IP address*	<input type="text"/>
Netmask*	<input type="text"/>
Gateway IP address*	<input type="text"/>
DNS IP address*	<input type="text"/>

Static IPv6: Fill in the following fields: **IP address**, **Prefix**, and **Gateway IP address**.

IP address*	<input type="text"/>
Prefix*	<input type="text"/>
Gateway IP address*	<input type="text"/>

PPPoE, IPv6 PPPoE, PPPoE Dual Stack, PPPoA: Enter authorization data provided by your ISP (the username (login) in the **Username** field and the password in the **Password** field). Click the **Show** icon () to display the entered password. If authorization is not required, select the **Without authorization** checkbox.

Without authorization

Username*

Password* 

2. Specify the VPI and VCI values in the relevant fields.

VPI (0-255)*

VCI (32 - 65535)*

3. Click the **NEXT** button.

Configuring Wireless Network

1. On the **Wireless Network 2.4 GHz** page, in the **Network name** field, specify your own name for the wireless network or leave the value suggested by the router.
2. In the **Password** field, specify your own password for access to the wireless network or leave the value suggested by the router (WPS PIN of the device, see the barcode label).
3. You can restore the parameters of the wireless network specified before resetting to factory defaults. To do this, click the **RESTORE** button.

Wireless Network 2.4 GHz

Enable

Network name*

mywifi_154

ⓘ The number of characters should not exceed 32

Open network

Password*

76543210 👁

ⓘ Password should be between 8 and 63 ASCII characters

RESTORE You can restore network name and security that was set before applying factory settings.

- If you want to create an additional wireless network isolated from your LAN, select the **Enable guest network** checkbox.

Enable guest network

Guest Wi-Fi network allows connection to your device and getting access to the Internet. Upon that computers connected to this wireless network will be isolated from the resources of your main local area network. This helps to secure your LAN while you provide access to the Internet for temporary users.

Network name*

The number of characters should not exceed 32

Open network

Max associated clients*

0

Enable shaping

Shaping (Mbit/s)*

0

- In the **Network name** field, specify your own name for the guest wireless network or leave the value suggested by the router.
- If you want to create a password for access to the guest wireless network, deselect the **Open network** checkbox and fill in the **Password** field.
- If you want to limit the bandwidth of the guest wireless network, select the **Enable shaping** checkbox and fill in the **Shaping** field.
- Click the **NEXT** button.

Configuring LAN Ports for IPTV/VoIP

1. On the **IPTV** page, select the **Is an STB connected to the device** checkbox.

IPTV

Is an STB connected to the device?

ⓘ If your ISP provides IPTV service, you can connect an STB directly to the router without additional equipment

Use VLAN ID

VLAN ID*

ⓘ Information about the VLAN ID can be found in the contract.

DSL 4 3 LAN 2 1

2. Select a free LAN port for connecting your set-top box.
3. *For the **Ethernet (LAN)** connection method:* If the IPTV service is provided via a VLAN channel, select the **Use VLAN ID** checkbox and fill in the **VLAN ID** field.
4. *For the **ADSL** connection method:* Specify the VPI and VCI values in the relevant fields.
5. Click the **NEXT** button.

- On the **VoIP** page, select the **Is an IP phone connected to the device** checkbox.

VoIP

Is an IP phone connected to the device?

ⓘ If your ISP provides VoIP service, you can connect an IP phone directly to the router without additional equipment

Use VLAN ID

VLAN ID*

ⓘ Information about the VLAN ID can be found in the contract.

DSL 4 3 LAN 2 1

BACK NEXT

- Select a free LAN port for connecting your IP phone.
- For the **Ethernet (LAN)** connection method: If the VoIP service is provided via a VLAN channel, select the **Use VLAN ID** checkbox and fill in the **VLAN ID** field.
- For the **ADSL** connection method: Specify the VPI and VCI values in the relevant fields.
- Click the **NEXT** button.

Changing Web-based Interface Password

On this page you should change the default administrator password. You may set any password except **admin**. Use digits, Latin letters (uppercase and/or lowercase), and other characters available in the US keyboard layout.⁴

! Remember or write down the new password for the administrator account. In case of losing the new password, you can access the settings of the router only after restoring the factory default settings via the hardware **RESET** button. This procedure wipes out all settings that you have configured for your router.

Click the **NEXT** button.

On the next page, check all the settings you have just specified.

Also you can save a text file with parameters set by the Wizard to your PC. To do this, click the **SAVE CONFIGURATION FILE** button and follow the dialog box appeared.

To finish the Wizard, click the **APPLY** button. The router will apply settings, reboot, if needed, and check the Internet connection if the Wizard has configured a WAN connection.

⁴ 0-9, A-Z, a-z, space, !"#%&'()*+,-./:;<=>?@[\\]^_`{|}~.

Configuring Local Area Network

1. Go to the **Connections Setup / LAN** page.
2. If needed, change the IPv4 address of the router's LAN interface and the mask of the local subnet. To do this, click the **IPv4** tab and specify needed values in the **IP address** and **Subnet mask** fields in the **Local IP Address** section.

Local IP Address

IP address*

192.168.1.1

Subnet mask*

255.255.255.0

Device domain name

dlinkrouter.local

3. If needed, specify your own IPv6 address of the router's LAN interface. To do this, click the **IPv6** tab and select the **Static** value from the **Mode of local IPv6 address assignment** drop-down list in the **Local IPv6 Address** section. Then specify the needed value in the **IPv6 address** field.

Local IPv6 Address

Mode of local IPv6 address assignment

Static

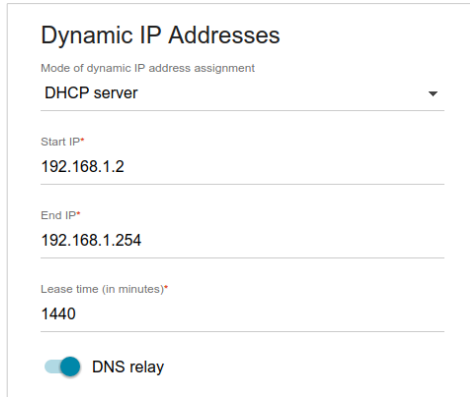
IPv6 address*

fd01::1

Prefix*

64

4. **IPv4 address assignment.** By default, the built-in DHCP server of the router assigns IPv4 addresses to the devices of the LAN. If you want to manually assign IPv4 addresses, disable the DHCP server (click the **IPv4** tab and select the **Disable** value from the **Mode of dynamic IP address assignment** drop-down list in the **Dynamic IP Addresses** section).



Dynamic IP Addresses

Mode of dynamic IP address assignment

DHCP server

Start IP*

192.168.1.2

End IP*

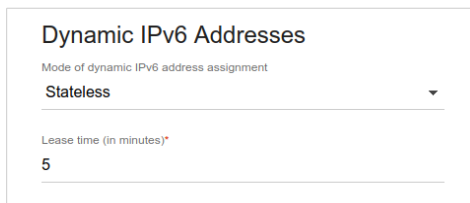
192.168.1.254

Lease time (in minutes)*

1440

DNS relay

5. **IPv6 address assignment.** By default, the devices of the LAN automatically assign IPv6 addresses to themselves (the **Stateless** value is selected from the **Mode of dynamic IPv6 address assignment** drop-down list in the **Dynamic IPv6 Addresses** section on the **IPv6** tab). If the devices of the LAN do not support IPv6 address autoconfiguration, enable the built-in DHCPv6 server of the router (select the **Stateful** value from the **Mode of dynamic IPv6 address assignment** drop-down list). If you want to manually assign IPv6 addresses to devices of the LAN, select the **Disable** value from the **Mode of dynamic IPv6 address assignment** drop-down list.



Dynamic IPv6 Addresses

Mode of dynamic IPv6 address assignment

Stateless

Lease time (in minutes)*

5

6. After specifying the needed parameters on the **Connections Setup / LAN** page, click the **APPLY** button.

SPECIFICATIONS*

Hardware	
Processor	<ul style="list-style-type: none"> · RTL8676S
RAM	<ul style="list-style-type: none"> · 32MB, SDRAM
Flash	<ul style="list-style-type: none"> · 8MB, SPI
Interfaces	<ul style="list-style-type: none"> · RJ-11 ADSL port · 4 10/100BASE-TX LAN ports · USB 2.0 port
LEDs	<ul style="list-style-type: none"> · POWER · 4 LAN LEDs · WLAN · WPS · USB · DSL · INTERNET
Buttons	<ul style="list-style-type: none"> · ON/OFF button to power on/power off · RESET button to restore factory default settings · WPS button to set up wireless connection · WIRELESS ON/OFF button to enable/disable wireless network
Antenna	<ul style="list-style-type: none"> · Two external non-detachable omnidirectional antennas (5dBi gain)
MIMO	<ul style="list-style-type: none"> · 2 x 2
Power connector	<ul style="list-style-type: none"> · Power input connector (DC)

* The device features are subject to change without notice. For the latest versions of the firmware and relevant documentation, visit www.dlink.ru.

DSL Parameters	
ADSL Standards	<ul style="list-style-type: none"> · ADSL: Multi-mode, ANSI T1.413 Issue 2, ITU-T G.992.1 (G.dmt) Annex A, ITU-T G.992.2 (G.lite) Annex A, ITU-T G.994.1 (G.hs) · ADSL2: ITU-T G.992.3 (G.dmt.bis) Annex A/L/M, ITU-T G.992.4 (G.lite.bis) Annex A · ADSL2+: ITU-T G.992.5 Annex A/L/M
ATM/PPP Protocols	<ul style="list-style-type: none"> · Bridged and routed Ethernet encapsulation · VC-based or LLC-based multiplexing · ATM Forum UNI3.1/4.0 PVC (up to 8 PVCs) · ATM Adaptation Layer Type 5 (AAL5) · ITU-T I.610 OAM F4/F5 loopback · ATM QoS · PPP over ATM (RFC 2364) · PPP over Ethernet (PPPoE) · Keep-alive for PPP connections

Software	
WAN connection types	<ul style="list-style-type: none"> · LTE · 3G · PPPoA · PPPoE · IPv6 PPPoE · PPPoE Dual Stack · IPoA · Static IPv4 / Dynamic IPv4 · Static IPv6 / Dynamic IPv6 · Bridge
Network functions	<ul style="list-style-type: none"> · DHCP server/relay · Stateful/Stateless mode for IPv6 address assignment, IPv6 prefix delegation · DNS relay · Dynamic DNS · Static IP routing · Static IPv6 routing · IGMP Proxy · IGMP snooping · RIP · Support of UPnP IGD · Support of VLAN · WAN ping respond · Support of SIP ALG · Support of RTSP · WAN reservation

Software	
Firewall functions	<ul style="list-style-type: none"> · Network Address Translation (NAT) · Stateful Packet Inspection (SPI) · IP filter · IPv6 filter · MAC filter · URL filter · DMZ · Prevention of ARP and DDoS attacks · Virtual servers · Built-in Yandex.DNS web content filtering service
VPN	<ul style="list-style-type: none"> · IPsec/PPTP/L2TP/PPPoE pass-through
QoS	<ul style="list-style-type: none"> · Interface grouping · VLAN priority (802.1p)
USB interface functions	<ul style="list-style-type: none"> · USB modem Auto connection to available type of supported network (4G/3G/2G) Auto configuration of connection upon plugging in USB modem Enabling/disabling PIN code check, changing PIN code⁵ · USB storage File browser Print server Access to storage via accounts Built-in Samba/FTP/DLNA server Built-in Transmission torrent client; uploading/downloading files from/to USB storage
Management	<ul style="list-style-type: none"> · Local and remote access to settings through TELNET/WEB (HTTP/HTTPS) · Multilingual web-based interface for configuration and management · Firmware update via web-based interface · Automatic notification on new firmware version · Saving/restoring configuration to/from file · Support of logging to remote host/connected USB storage · Automatic synchronization of system time with NTP server and manual time/date setup · Ping utility · Traceroute utility · TR-069 client

⁵ For some models of USB modems.

Wireless Module Parameters	
Standards	<ul style="list-style-type: none"> IEEE 802.11b/g/n
Frequency range	<ul style="list-style-type: none"> 2400 ~ 2483.5MHz
Wireless connection security	<ul style="list-style-type: none"> WEP WPA/WPA2 (Personal/Enterprise) MAC filter WPS (PBC/PIN)
Advanced functions	<ul style="list-style-type: none"> WMM (Wi-Fi QoS) Information on connected Wi-Fi clients Advanced settings Guest Wi-Fi / support of MBSSID Limitation of wireless network rate Periodic scan of channels, automatic switch to least loaded channel Autonegotiation of channel bandwidth in accordance with environment conditions (20/40 Coexistence)
Wireless connection rate	<ul style="list-style-type: none"> IEEE 802.11b: 1, 2, 5.5, and 11Mbps IEEE 802.11g: 6, 9, 12, 18, 24, 36, 48, and 54Mbps IEEE 802.11n: from 6.5 to 300Mbps (from MCS0 to MCS15)
Transmitter output power <i>The maximum value of the transmitter output power depends upon the radio frequency regulations applied in your country</i>	<ul style="list-style-type: none"> 802.11b (typical at room temperature 25 °C) 15dBm 802.11g (typical at room temperature 25 °C) 13.5 ~ 15dBm 802.11n (typical at room temperature 25 °C) 13.5 ~ 15dBm
Receiver sensitivity	<ul style="list-style-type: none"> 802.11b (typical at room temperature 25 °C) -84dBm 802.11g (typical at room temperature 25 °C) -72dBm 802.11n (typical at room temperature 25 °C) HT20 -70dBm HT40 -67dBm
Modulation schemes	<ul style="list-style-type: none"> 802.11b: CCK (11, 5.5Mbps), DQPSK (2Mbps), DBPSK (1Mbps), DSSS 802.11g: PSK/CCK, DBPSK, DQPSK, OFDM, BPSK, QPSK, 16QAM, 64QAM 802.11n: PSK/CCK, DBPSK, DQPSK, OFDM, etc.

Physical Parameters

Dimensions (L x W x H)	· 174 x 119 x 32 mm (6.6 x 4.7 x 1.3 in)
Weight	· 197 g (0.43 lb)

Operating Environment

Power	· Output: 12V DC, 1A
Temperature	· Operating: from 0 to 40 °C · Storage: from -20 to 70 °C
Humidity	· From 5% to 95% (non-condensing)

Supported USB modems⁶**GSM**

- Alcatel X500
- D-Link DWM-152C1
- D-Link DWM-156A6
- D-Link DWM-156A7
- D-Link DWM 156A8
- D-Link DWM-156C1
- D-Link DWM-157B1
- D-Link DWM-157B1 (Velcom)
- D-Link DWM-158D1
- D-Link DWR-710
- Huawei E150
- Huawei E1550
- Huawei E156G
- Huawei E160G
- Huawei E169G
- Huawei E171
- Huawei E173 (Megafon)
- Huawei E220
- Huawei E3131 (MTS 420S)
- Huawei E352 (Megafon)
- Prolink PHS600
- Prolink PHS901
- ZTE MF112
- ZTE MF192
- ZTE MF626
- ZTE MF627
- ZTE MF652
- ZTE MF667
- ZTE MF668
- ZTE MF752

⁶ The manufacturer does not guarantee proper operation of the router with every modification of the firmware of USB modems.

Supported USB modems**LTE**

- Huawei E3131
- Huawei E3272
- Huawei E3351
- Huawei E3372
- Huawei E367
- Huawei E392
- Megafon M100-1
- Megafon M100-2
- Megafon M100-3
- Megafon M100-4
- Megafon M150-1
- Megafon M150-2
- Quanta 1K6E (Beeline 1K6E)
- MTS 824F
- MTS 827F
- Yota LU-150
- Yota WLTUBA-107
- ZTE MF823
- ZTE MF827

Smartphones in USB tethering mode

- Some models of Android smartphones

SAFETY RULES AND CONDITIONS

Please carefully read this section before installation and connection of the device. Make sure that the power adapter and cables are not damaged. The device should be used only as intended in accordance with the documents.

The device is intended for use in dry, clean, dust-free, and well ventilated areas with normal humidity away from strong heat sources. Do not use the device outdoors or in the areas with high humidity. Do not place foreign objects on the device. Do not obstruct the ventilation openings of the device. The environmental temperature near the device and the temperature inside the device's cover should be within the range from 0 °C to +40 °C.

Only use the power adapter supplied with the device. Do not plug in the adapter, if its case or cable are damaged. Plug the adapter only into working electrical outlets with parameters indicated on the adapter.

Do not open the cover of the device! Unplug the device before dusting and cleaning. Use a damp cloth to clean the device. Do not use liquid/aerosol cleaners or magnetic/static cleaning devices. Prevent moisture getting into the device or the power adapter.

The service life of the device is 2 years.

TECHNICAL SUPPORT

You can find software updates and user documentation on our website.

D-Link provides its customers with free support within the product's warranty period.

Customers can contact the technical support group by phone or by e-mail/Internet.

FOR TELEPHONE NUMBERS AND ADDRESSES OF D-LINK OFFICES WORLDWIDE VISIT

<http://www.dlink.com/corporate/worldwideoffices/>