



DFL-500

Firewall in a desktop box with complete virus scanning, intruder protection and remote VPN access functions for SOHO networks.

Network Secure Firewall for SOHO

The DFL-500 is a cost-effective firewall that provides comprehensive network protection, performance and easy installation. A hardware device that is much easier to install and more effective than software-based firewalls, the DFL-500 offers an ideal protection for SOHO or even homes, with plug-and-play connection, complete security against outside intruders, Virtual Private Network (VPN) support through data encryption and authentication, and easy administration.

Complete Security

Your office is connected to the outside world through the Internet. It is easy for hackers to intrude your databases to steal or destroy data. The DFL-500 provides a wide range of protection against outside attacks, plus comprehensive security that includes user authentication, scheduled policies and Virtual Server Mapping. The DFL-500 provides NAT translation of IP addresses from the internal private network to the public IP network.

Content Filtering & Virus Scanning

The DFL-500 provides filtering of potentially malicious codes embedded in web pages, can remove Active objects, java, JavaScript and other potential threats. It provides virus scanning for all incoming and outgoing email and attachments, plus virus check for Web plug-ins and downloaded Web content.

Easy Installation

All you need to do is connect the network cables. To the outside world, you hook the RJ-45 plug to your DSL/cable modem, Internet gateway or router. To your office, you plug in another RJ-45 jack to your network switch or hub. The DFL-500 provides CPU, system memory and embedded software, all ready to run.

Access Control

Administration access can be controlled such that the DFL-500 can be administered from the protected internal

network or the external public Internet. The DFL-500 supports an internal database for authenticating user access to various services. It maps public IP addresses to information servers on the internal network to allow public access. It also prevents access to particular web sites, using powerful pattern matching to block access to URLs.

Scheduled Policies

Firewall policies may be scheduled for different times of the day/week/month and for one time use or recurring.

Remote Access VPN

The DFL-500 supports VPN functions including IPSec, ESP security in tunnel mode, LAN-to-LAN and mobile remote access.

Hardware Acceleration

The DFL-500 uses a special design ASIC to perform VPN encryption and decryption. It off-loads CPU loading through hardware-based acceleration.

Management

The DFL-500 supports web-based management using a secure SSL connection from a remote terminal either on the internal network or even from an external remote site. The DFL-500 can also be administered on-site using its RS-232 serial connection.

Key Features

- Easy to install with Quick Installation Wizards
- Web-based management and software updated via browser
- Firewall operation mode support NAT/PAT or Transparent
- Support content filtering by key word check
- Triple-DES data encryption
- Anti-virus scanning

DFL-500

Technical Specifications

General

Services

- ftp
- http
- NAT

Authentication

- HMAC MD5 or HMAC SHA-1 authentication/data integrity

Key Exchange

- Automatic IKE based on Pre-Shared Key

Attack Protection Provided

- IP Source Routing
- IP Spoofing
- SYN flood attack
- ICMP flood
- UDP flood
- Land attack
- Address sweep attack
- Tear drop attack
- Win nuke attack
- Port Scan attack
- Ping of Death

Hardware Specifications

Processor

133MHz

System Memory

On board 64MB

Flash Memory

32MB Compact Flash Card

Network Interface

2 10/100Mbps ports (1 Internal & 1 External)

LED Indicators

- Power
- Status
- Interface link and activity

Software Specifications

Dedicated VPN Tunnels

30

Concurrent Sessions

2,000

Physical & Environmental

Power Input

100 - 240V auto-voltage external AC power adapter

Power Consumption

36Watt in Max

Dimensions

215 x 163 x 45 mm (8.46 x 6.4 x 1.77 inches)

Operating Temperature

0°C ~ 45°C

Storage Temperature

0°C ~ 60°C

Humidity

5% ~ 95% RH, non-condensing

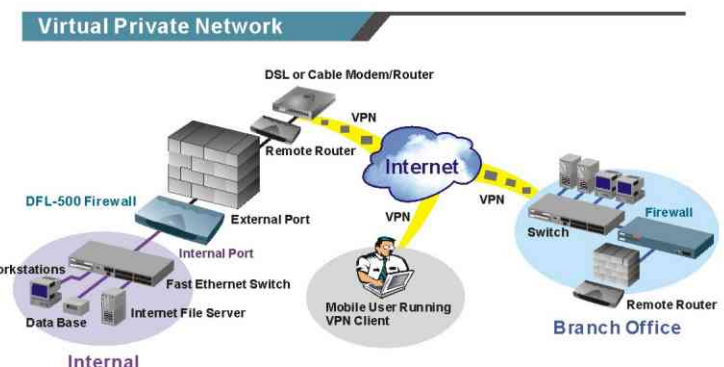
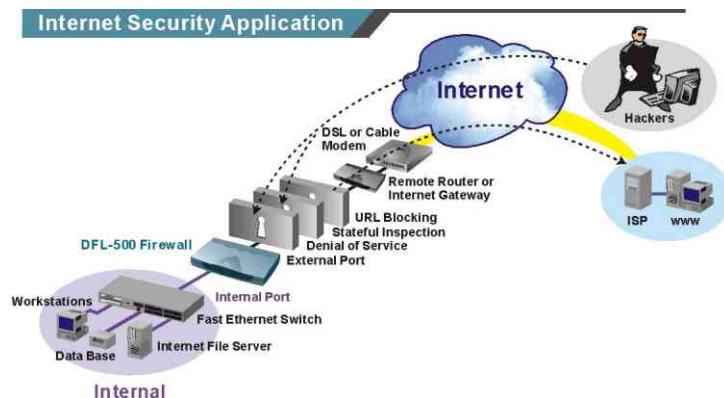
EMI Certification

- FCC Class B
- CE Class B
- BSMI Class B

Safety

- UL
- TÜV

SOHO Series



LISTED
ITE
E141136
66F9

Ordering Information

SOHO Firewall With VPN Support
DFL-500 2 10/100Mbps ports

For country-specific external AC power adapter, please specify one of the following after the model number:

- /U Includes no AC power adapter
- /A Includes an American standard AC power adapter
- /E Includes an EU standard AC power adapter
- /B Includes a U.K. standard AC power adapter
- /N Includes an Australian standard AC power adapter

D-Link®

Specifications subject to change without prior notice.
D-Link is a registered trademark of D-Link Corporation/D-Link System Inc. All other trademarks belong to their proprietors.

U.S.A.	TEL: 1-949-788-0805	FAX: 1-949-753-7033	www.dlink.com
Canada	TEL: 1-905-8295033	FAX: 1-905-8295095	www.dlink.ca
Europe	TEL: 44-20-8731-5555	FAX: 44-20-8731-5511	www.dlink.co.uk
U.K.	TEL: 44-20-8731-5555	FAX: 44-20-731-5511	www.dlink.co.uk
Germany	TEL: 49-6196-77990	FAX: 49-6196-7799300	www.dlink.de
France	TEL: 33-1-30238688	FAX: 33-1-30238689	www.dlink-france.fr
Benelux	TEL: 31-40-2668713	FAX: 31-40-2668666	www.dlink-benelux.nl
Italy	TEL: 39-02-2900-0676	FAX: 39-02-2900-1723	www.dlink.it
Iberia	TEL: 34-93-4965751	FAX: 34-93-4965701	www.dlinkiberia.es
Sweden	TEL: 46-(0)8564-61900	FAX: 46-(0)8564-61901	www.dlink.se
Norway	TEL: 47-22-991890	FAX: 47-22-207039	
Denmark	TEL: 45-43-969040	FAX: 45-43-424347	www.dlink.dk
Finland	TEL: 358-9-622-91660	FAX: 358-9-622-91661	www.dlink-fi.com
Singapore	TEL: 65-6774-6233	FAX: 65-6774-6322	www.dlink-intl.com
Australia	TEL: 61-2-94177100	FAX: 61-2-94171077	www.dlink.com.au
Japan	TEL: 81-3-5434-9678	FAX: 81-3-5434-9868	www.dlink.co.jp
China	TEL: 86-10-8809-7777	FAX: 86-10-8809-6789	
India	TEL: 91-22-652-6696	FAX: 91-22-652-8914	www.dlink-india.com
Middle East	TEL: 202-2456176	FAX: 202-2456192	www.dlink-me.com
South America	TEL: 56-2-232-3185	FAX: 56-2-232-0923	www.dlink.cl
South Africa	TEL: 27(0)126652165	FAX: 27(0)126652186	www.dlink.co.za
Russia	TEL: 7-095-737-3389	FAX: 7-095-737-3390	www.dlink.ru
Taiwan	TEL: 886-2-2910-2626	FAX: 886-2-2910-1515	www.dlinktw.com.tw
D-Link Corp.	TEL: 886-2-2916-1600	FAX: 886-2-2914-6299	www.dlink.com.tw



RECYCLABLE
Rev. 01 (Mar. 2002)
Printed in Taiwan