



Quick Installation Guide

# DSA-3110

# Hotspot Edition

Hotspot Service Gateway



## BEFORE YOU BEGIN

Please read this guide before installation. Make sure that you have all the necessary information and equipment. Also check whether the existing hardware/software firewalls are disabled.

## CONNECTING DSA-3110 HOTSPOT EDITION TO EXISTING NETWORK

1. Connect an Ethernet cable between any of Ethernet ports **4-7** located on the back panel of the device and the Ethernet port of your PC or the hub (switch) of your network.
2. Connect the power cord to the **power connector port** on the back panel of the device, then plug the power adapter into an electrical outlet or power strip. The Power LED turns on indicating that the device has been powered on.

**Attention!** *Using a power supply with a different voltage rating than the one included will cause damage and void the warranty for this product.*

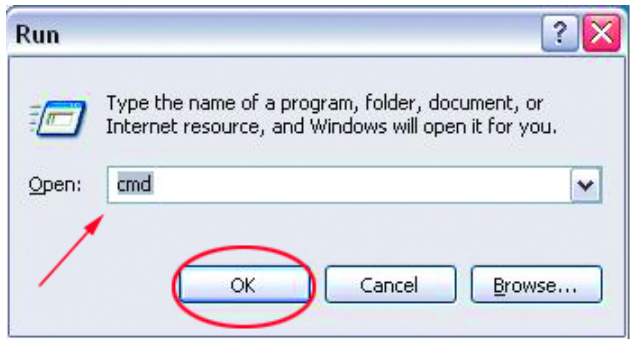
3. Check whether the LED of the Ethernet port to which you have just connected the Ethernet cable is on. If the relevant LED is off, please repeat steps 1-2 and check the Ethernet cable.

**Note:** *All LAN1 ports of the DSA-3110 Hotspot Edition device are auto-MDI/MDIX. So you can use a straight-through Ethernet cable as well as a crossover-one.*

## CHECKING IP ADDRESS

Check the IP address of the computer used to configure the DSA-3110 Hotspot Edition device.

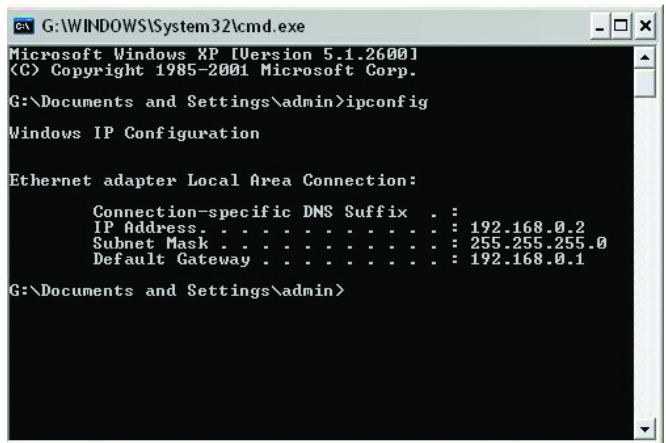
Go to **Start > Run**.  
Enter “**cmd**” in the **Open** field. Click the **OK** button.



In the opened window, type “**ipconfig**”. Press the **Enter** key.

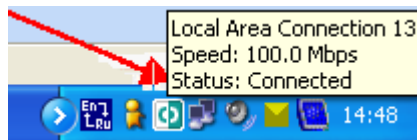
Current settings of your IP address will be displayed.

The IP address should fall within the range from **192.168.1.1** to **192.168.1.253**.



**If your IP address is out of the range specified above, change it in the following way:**

1. Left-click the **Network Connection** icon



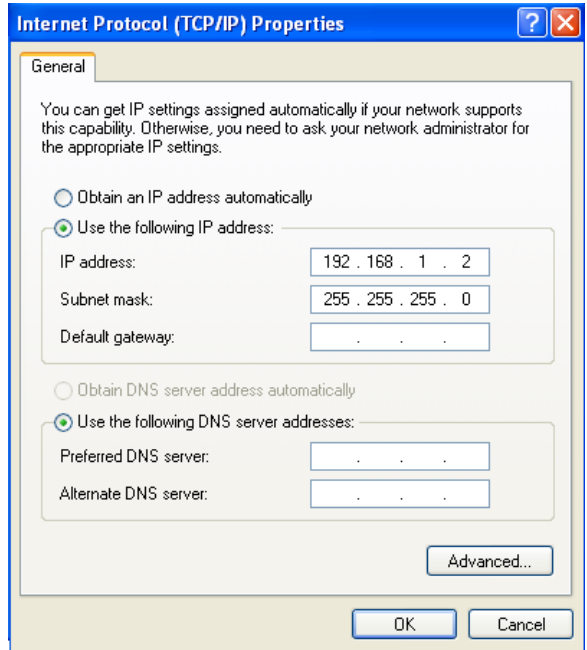
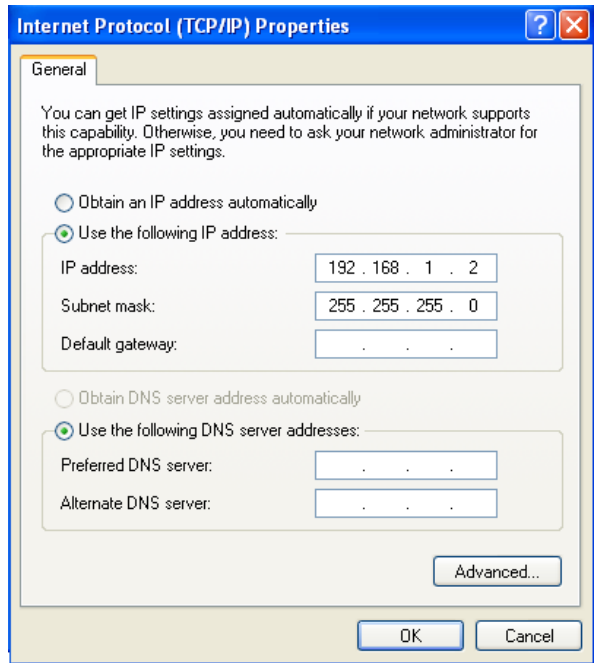
## 2. The Local Area Connection Status window appears. In the window, click the Properties button.

In the window, click the Properties button.

## 3. The Local Area Connection Properties window appears. Select the Internet Protocol (TCP/IP) line and click the Properties button.

4. In the opened window, select the Use the following IP address radio button and enter the IP address of your computer from the range specified above (e.g., 192.168.1.2) and the subnet mask (255.255.255.0).

5. Click the OK button in the present window and the OK button in the Local Area Connection Properties window.



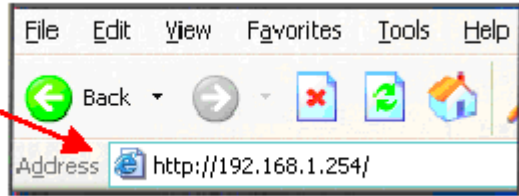
## CONNECTING TO WEB-BASED INTERFACE

1. Open a web browser on your computer.

Enter

**http://192.168.1.254** in the address bar.

*Note: First disable proxy settings in your web browser.*



2. On the opened page, enter “**admin**” in the **Login** field and “**admin**” in the **Password** field. Then click the **Enter** button.

A screenshot of the login page for the DSA-3110 Hotspot Edition. The page has a blue header with the text "DSA-3110 Hotspot Edition". Below the header, there are two input fields: "Login:" with the text "admin" and "Password:" with masked characters "•••••". At the bottom, there are two buttons: "Clear" and "Enter".

DSA-3110 Hotspot Edition	
Login:	admin
Password:	•••••
Clear	Enter

After successful registration the system statistics page opens.

A screenshot of the D-Link system statistics page. The page features the D-Link logo and the tagline "Building Networks for People" in the top left. In the top right, there are links for "Russian" and "Logout". A "Start" button is located in the top right corner. On the left side, there is a navigation menu with items: "Start", "Users and Groups", "Options", "Net", and "System". The main content area displays a "Statistics:" section with a table of system parameters and their values.

Parameter	Value
Total memory:	62312 Kbyte
Free memory:	14020 Kbyte
Uptime:	76 day, 20 hour, 24 min
Load average (1, 5, 15 min):	2.01, 2.01, 2.00
Total processes:	30

Follow the menu to configure the necessary settings.

Please refer to the “*User Manual*” document to fine-tune the device.

## **TECHNICAL SUPPORT**

You can find software updates and user documentation on our website.

D-Link provides its customers with free support within the product's warranty period.

Customers can contact the technical support group by phone or by Internet/e-mail.

### **FOR CUSTOMERS WITHIN RUSSIA**

#### ***CONTACT D-LINK TECHNICAL SUPPORT***

(495) 744-00-99

#### ***CONTACT D-LINK BY INTERNET***

**Website:** <http://www.dlink.ru>

**E-mail:** [support@dlink.ru](mailto:support@dlink.ru)

### **FOR TELEPHONE NUMBERS AND ADDRESSES OF D-LINK**

#### **OFFICES WORLDWIDE VISIT**

<http://www.dlink.com/corporate/worldwideoffices/>