




PRODUCT SELECTION GUIDE

A grayscale photograph of a hand holding a green printed circuit board (PCB) is positioned in the center of the page. The hand is shown from the side, with fingers gripping the edges of the board. The PCB has various electronic components and a grid of pins visible. The background is a light, neutral tone.

WIRELESS
SWITCHES
ADSL
IP ROUTERS
VPN ROUTERS
FIREWALLS

BUILDING NETWORKS FOR PEOPLE

SECOND EDITION 2002

INTRODUCING DWL-1800 WIRELESS OUTDOOR BRIDGE

WIRELESS

THE D-LINK AIR FAMILY OF PRODUCTS PROVIDES EFFICIENT, COST EFFECTIVE POINT-TO-POINT AND POINT-TO-MULTIPOINT NETWORKING OPTIMISED FOR BUILDING-TO-BUILDING CONNECTIVITY, COVERING DISTANCES OF UP TO 25 KM IN HARSH AND ADVERSE ENVIRONMENTS AND WEATHER CONDITIONS.

D-LINK AIR OUTDOOR BRIDGING IS THE IDEAL SOLUTION FOR CONNECTING BUILDINGS, CAMPUSES, INDUSTRIAL ZONES AND REMOTE SITES, ENSURING ENTERPRISE AND COMMUNITY-WIDE NETWORK CONNECTIVITY.

PRODUCT HIGHLIGHTS

D-Link's DWL-1800 delivers a comprehensive range of product features, ensuring fast, consistent and reliable networking services, including...

- Indoor-outdoor architecture ensures unprecedented range and reliability.
- Data rates of up to 11 Mbps.
- Range of up to 25 km (15 miles).
- Maximum sensitivity.
- Built-in remote diagnostics, which minimize maintenance and maximize savings.
- IEEE 802.11b, IEEE 802.3 and Wi-Fi compliance.
- Integrated flat panel 16dBi Antenna.



D-LINK DWL-1800 SYSTEM COMPONENTS

DWL-1800B Base Unit Connects directly to the 10Base-T Ethernet backbone using a RJ-45 connector and links the central network Base Unit to the Remote Bridge (DWL-1800R) to up to 128 remote sites.

DWL-1800R Remote Bridge Connects directly to the 10Base-T Ethernet backbone using a RJ-45 connector and links a remote Ethernet network to the central point via the Base Unit, (DWL-1800B) servicing up to 1024 stations.

AVAILABLE



AirPlus

FAMILY OF ENHANCED 2.4GHz 802.11b+ 22MB WIRELESS

Our D-Link AirPlus suite of Enhanced 2.4GHz 802.11b Wireless Networking Products includes a Wireless Router for sharing Internet access, a Wireless Access Point for infrastructure and extended reach, a Wireless CardBus Adapter for laptops, and a Wireless PCI Adapter for desktops. All of the products in the D-Link AirPlus series strictly adhere to the IEEE 802.11b technical specification and are fully compatible with other 802.11b solutions in addition to providing a Packet Binary Convolutional Coding (PBCC) modulation data transfer rate option that delivers increased range, coverage and throughput performance. This allows for the affordable delivery of media rich content such as digital images, videos, and MP3 files over wireless networks with speed, ease and flexibility within an already proven standard.



DWL-520+



DWL-650+



DWL-900AP+



AirPro

FAMILY OF ENHANCED 5GHz 802.11a 54MB WIRELESS

Our D-Link AirPro line of 5GHz 802.11a Wireless Networking Products includes a Wireless Access Point for infrastructure and extended reach, a Wireless CardBus Adapter for laptops, and the industry's only 5GHz Wireless PCI Adapter for desktops. Delivering near wire speed performance and extreme value, the D-Link AirPro technology empowers users in the home, Small Office/Home Office and Enterprise environments, that have demanding data transfer needs, with the flexibility they need. All of the products in the D-Link AirPro series of high-speed wireless networking solutions strictly adhere to the IEEE 802.11a technical specification and are compatible with all other 802.11a devices.



DWL-A520



DWL-A650



DWL-5000AP

DWL-1800
Record-breaking
reach, superb
reliability



The Standard for
Wireless Fidelity

WIRELESS

11 MBPS WIRELESS

	D-Link Air									
	DWL-120	DWL-500	DWL-520	DWL-660	DCF-660W	DWL-900AP	DWL-1000AP	DI-713P	DP-313	
Client - USB Interface	X									
Client - PCI Interface		X	X							
Client - PCMCIA Interface		X		X						
Client - Compact Flash Interface					X					
Access Point - Ethernet Interface						X	X	X		
Maximum Speed	11	11	11	11	11	11	11	11	11	
Ad-Hoc Mode	X	X	X	X	X			X	X	
Infrastructure Mode	X	X	X	X	X	X	X	X	X	
Web Based Configuration						X	X	X	X	
Wi-Fi Compliant	X	X	X		X	X	X	X	X	
Maximum WEP Encryption	128	128	128	128	128	128	128	128	128	
Upgradeable Antenna			In/Out	In/Out		In/Out	In/Out	In/Out		
Ethernet Ports						1	1	3		
Printer Ports								1	3	
Cable/DSL Router								X		
Site Survey Software	X	X	X		X			X	X	
DB-9 Com Port								X		
Standard (802.11A or 802.11B)	B	B	B	B	B	B	B	B	B	
Miscellaneous	Versatile and easy to install USB interface 2 in one - PCMCIA Card in PCI Cradle PCI Card with 2.5Dbi Dipole Antenna PCMCIA with upgradeable antenna Supports Type I & II PDA Compact Flash 2.5Dbi Dipole Antenna included Unobtrusive Antenna built in to unit AP, Print Server, Internet Gateway and 3 port 10/100 switch Wireless Print Server supporting up to 3 Parallel Printers									



DCF-660W



DWL-900AP+

22 MBPS 54 MBPS WIRELESS

	D-Link Air Plus					D-Link Air Pro		
	DWL-520+	DWL-650+	DWL-900AP+	DWL-1000AP+	DI-614+	DWL-A520	DWL-A650	DWL-5000AP
Client - PCI Interface	X					X		
Cable/DSL Router & 4 port switch					X			
Client - PCMCIA Interface		X					X	
Access Point - Ethernet Interface			X	X				X
Bridge - Ethernet Interface				X				
Maximum Speed	22*	22*	22*	22*	22*	72**	72**	72**
Ad-Hoc Mode	X	X	X	X		X	X	
Infrastructure Mode	X	X	X	X	X	X	X	X
PTP & PTMP Lan to Lan Bridging				X				
Load Balancing				X				
Access Point Backup				X				
Web Based Configuration			X	X				
Wi-Fi Compliant	X	X	X	X	X			
Maximum WEP Encryption	256	256	256	256	256	152	152	152
Upgradeable Antenna	In/Out	In	In/Out	In/Out	In/Out			
Ethernet Ports			1	1	5			1
Site Survey Software	X	X	X	X	X			
Standard (802.11A or 802.11B)	B	B	B	B	B	A	A	A

*D-Link AirPlus is compliant with the 802.11B standard and interoperable at 11Mbps with these devices. When used with other D-Link AirPlus devices a maximum link of 22Mbps is available when PBCC Modulation is enabled.

**D-Link AirPro is compliant with the 802.11A standard and interoperable at 54Mbps with these devices. When used with other D-Link AirPro devices a maximum link of 72Mbps is available in turbo mode (channel aggregation).

INDOOR & OUTDOOR BRIDGES

	DWL-1500	DWL-1800B	DWL-1800R	DWL-1000AP+
Access Point - Ethernet Interface	X			X
Bridge - Ethernet Interface	X	X	X	X
Maximum Speed	11	11	11	22*
Ad-Hoc Mode	X			X
Infrastructure Mode	X			X
Internal or External Installation	Int.	Ext.	Ext.	Int.
PTP & PTMP Lan to Lan Bridging	X	X	X	X
Integrated Antenna (25km range)		X	X	
Load Balancing				X
Access Point Backup				X
Web Based Configuration	X			X
Wi-Fi Compliant	X			X
Maximum WEP Encryption	128	64	64	256
Upgradeable Antenna	In/Out	Out	Out	In/Out
Ethernet Ports	1	1	1	1
Site Survey Software	X	X	X	X
Standard (802.11A or 802.11B)	B	B	B	B
Miscellaneous	DWL-P100 POE included	Base unit. Int. Antenna / 25km	Remote unit. Integrated Ant. / 25km	Airplus - Bridge at 22Mbps

WIRELESS ANTENNAS

	Antenna's									Optional Ext. Cables			
	DWL-50AT	DWL-M60AT	DWL-R60AT	ANT24-0500	ANT24-0800	ANT24-0801	ANT24-1200	ANT24-1400	ANT24-1801	ANT24-CB03N	ANT24-CB06N	ANT24-CB09N	ANT24-JC
Indoor Use	X	X	X	X	X	X	X	X	X				
Outdoor Use													
DB Gain (Dbi)	5	6	6	5	8	8.5	11.5	14	18				
Dipole	X												
Planar (Flat Panel)							X						
Yagi (Tubular)						X			X				
Pico Cell (Semi Directional)													
Panel Directional		X						X					
Micro-strip Patch			X										
OmniDirectional (360 Degrees)	X			X	X								
Horizontal Spread	360	80	70	360	360	70	80	30	15				
Vertical Spread	15	80	85	30	15	70	23	30	15				
Maximum Distance (Km) at 11Mbps	0.5	0.5	0.5	0.5	1	1	1.5	3	5.5				
SMA Connector on Antenna	X	X	X				X						
N-Female Connector on Antenna				X	X	X		X	X				
Includes 0.5m Cable: N-Male to RP-SMA					X			X	X				
Includes 3m Cable: N-Male to RP-SMA				X		X		X					
Includes 3m Cable: SMA Plug to RP-SMA Plug							X						
										* 3m Extension Cable	* 6m Extension Cable	* 9m Extension Cable	Allows connection of DWL-660 to DWL-M60AT

* The Optional 3, 6 & 9 Metre Extension Cables are suitable for the ANT24-0500, ANT24-0800, ANT24-0801, ANT24-1400, ANT24-1801



18DBI OUTDOOR YAGI ANTENNA
ANT24-1801



6DBI INDOOR
DIRECTIONAL-PANEL ANTENNA
DWL-M60AT



8.5DBI INDOOR/OUTDOOR
SEMI-DIRECTIONAL ANTENNA
ANT24-0801

SWITCHES

EXTENSIVE

CHOICES

D-LINK OFFERS AN EXTENSIVE RANGE OF SWITCHES FOR FAST ETHERNET AND GIGABIT ETHERNET -- THE TOPOLOGY OF CHOICE FOR LOCAL AREA NETWORKS (LANs). UNMANAGED AND MANAGED SOLUTIONS ARE AVAILABLE, WITH A VARIETY OF SIZES FOR HOMES, SMALL OFFICES, WORKGROUPS, DEPARTMENTS AND ENTERPRISES. PORT DENSITIES RANGE FROM AS FEW AS 5 TO AS MANY AS 128 PORTS PER SWITCH. LAYER 2 SWITCHES WITHOUT ROUTER CAPABILITY AND LAYER 3 SWITCHES WITH ROUTER CAPABILITIES ARE ALL AVAILABLE.

UNMANAGED 10/100/1000Mbps SWITCHES

These switches provide plug-and-play connection to 10Mbps, 100Mbps, and 1000Mbps SOHO, workgroup and departmental networks.

These networks normally have simple requirements and do not need network management.

MANAGED 10/100/1000Mbps SWITCHES

Designed for the larger networks with network management requirements, these switches provide 10/100Mbps dual-speed support for all ports, and industry-standard management capability. With 10/100Mbps support, these switches provide you with smooth migration to 100Mbps Fast Ethernet and seamless integration of 10Mbps and 100Mbps segments. Gigabit ports for server deployment come either as standard features or as options.

Extensive network management functions include SNMP and RMON monitoring, security setup and web-based management. Port trunking, flow control and VLAN capabilities are also provided.

Web-based management lets you manage D-Link switches from anywhere on the network, using any Web browser.

CHASSIS-BASED 100/1000Mbps SWITCHES

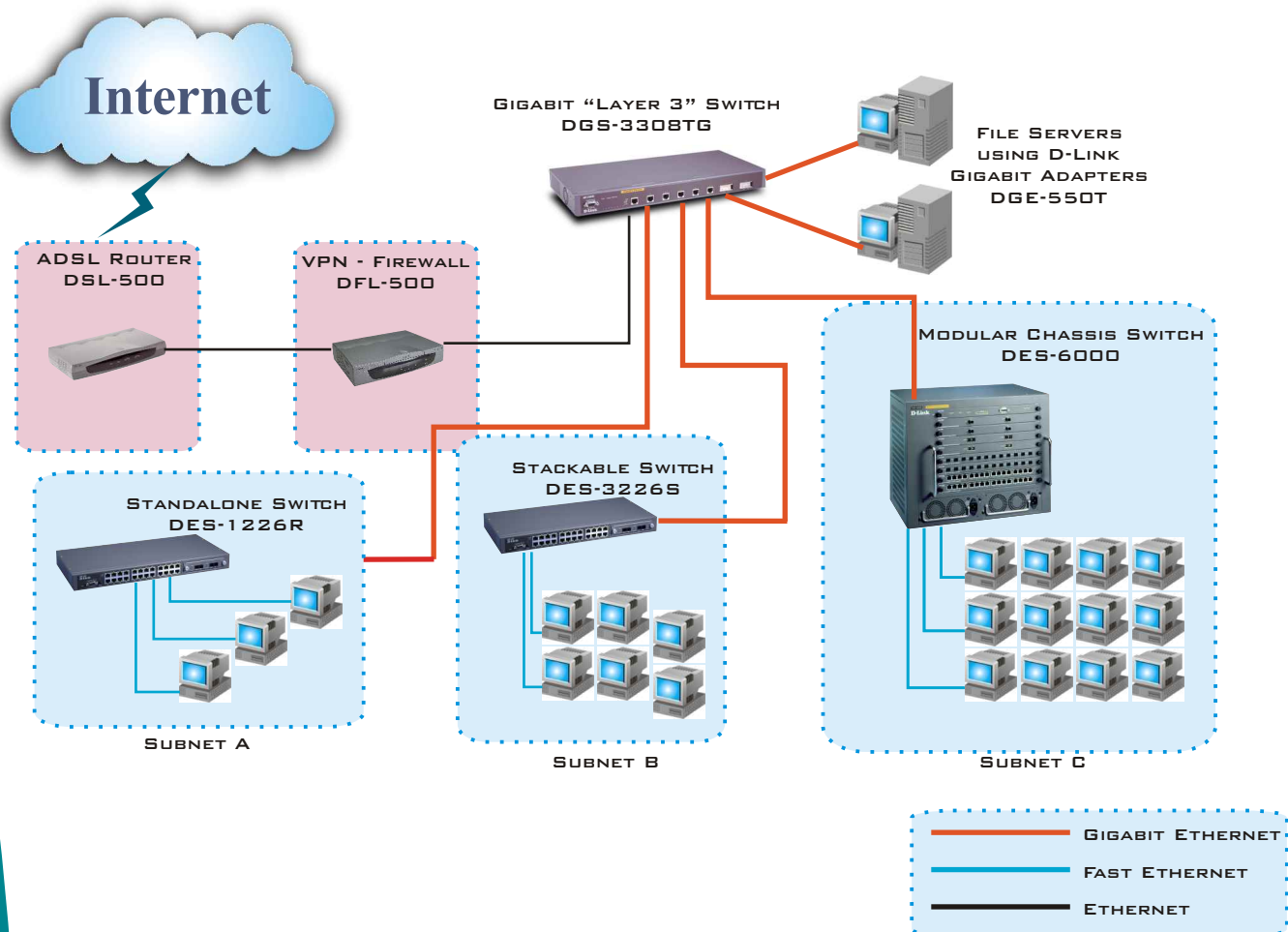
These switches are designed for the large departmental to enterprise networks. They connect a large number of desktops, servers, hubs, switches and routers together. Gigabit ports are provided to let you create a reliable fiber backbone over extended distances.

These switches are built around a slot expansion architecture design, allowing you to configure port types and densities to suit specific site requirements.

STAND-ALONE VS. STACKABLE SWITCHES

The stand-alone switches offer simpler designs and can be used for SOHO and workgroup connection. They have a fixed number of ports. To get more ports, you can cascade the switches together, using the uplink ports or the Gigabit ports.

The stackable switches are normally used by departmental or larger networks. You can stack up units as your network expands to get scalable expansion. All switches in the stack inter-act with each other and transmit data among themselves as if they are part of a single device.



SWITCHES

SWITCHES

	DES-1005D	DES-1008D	DES-1008F	DES-1016D	DES-1016R+	DES-1024R+	DES-1009G	DES-1218R	DES-1226R	DES-3226	DES-3226S	DES-3624	DES-3624IF	DES-3326	DGS-1008T	DGS-1024T	DGS-3308TG	DGS-3308FG	DES-1200M	DES-6000	DES-6300
General																					
Fixed Ports Only	X	X	X	X			X		X	X	X	X	X	X		X	X	X			
Fixed Ports with Optional Module Slots					X	X		X	X	X	X	X	X	X							
Modular Ports Only																					
MDI Uplink Port(s)	X	X	X	Auto	Auto	Auto	X	Auto	Auto	Auto	Auto	X	X	X	Auto	Auto	X	X	X	X	X
Stackable												X	X	X			X	X			
19" Rack-Mount					X	X		X	X	X	X	X	X	X	X	X	X	X	X	X	X
Backplane Bandwidth	1G	1.6G	1.6G	3.2G	2.6G	2.6G	3.2G	6.7G	6.7G	8.8G	8.8G	10.66G	0.66G	8.8G	16G	48G	16G	16G	9.6G	21.32G	32G
Management																					
VLAN								X	X	X	X	X	X	X			X	X		X	X
Port Aggregation (Trunking)								X	X	X	X	X	X	X			X	X		X	X
Layer 3														X			X	X			X
Optional Redundant Power Supply																				X	X
Standard Ports																					
10BaseT / 100Base-TX	5	8	7	16	16	24	8	16	24	24	24	24	20	24							
100Base-FX			1										1								
10BaseT / 100BaseTX / 1000Base-T							1								8	24					
100BaseTX / 1000Base-T																	6				
1000Base-SX																		6			
GBIC															2	2	2				2
Optional Module Slots																					
No. of Option Module Slots					1	1				1	1		2*	1					4	8	6
Optional Module Ports																					
10Base-2																					
10BaseT / 100BaseTX																			8	16	16
100Base-FX					2	2		2	2	2	2								4	12	12
100Base-TX / 1000Base-T								2	2	2	2		2	2					1	2	2
1000Base-SX								2	2	2	2		2	2					1	2	2
1000Base-LX													2							2	2

* One optional module slot has been already preconfigured with option module port(s)



MANAGED MODULAR
CHASSIS SWITCH
DES-6000



MANAGED STACKABLE
SWITCH
DES-3226S

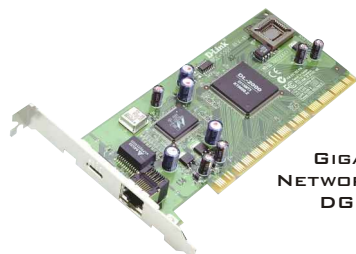
NETWORK ADAPTERS

	DE-220PCT	DE--528CT	DFE-530TX	DFE-538TX	DFE-550TX	DFE-550FX	DFE-580TX	DGE-500T	DGE-550T	DGE-550SX	DFE-650TXD	DFE-690TXD
10Base2 (BNC)	X	X										
10BaseT (RJ45)	X	X										
10BaseT / 100BaseTX (RJ45)			X	X	X		X *				X	X
100BaseFX (SC Connector)						X						
10Base/T / 100BaseTX/ 1000BaseT (RJ45)								X	X			
1000BaseSX (SC Connector)										X		
ISA	X											
PCI (32-Bit)		X	X	X	X	X	X	X				
PCI (64-Bit)									X	X		
PC Card											X	
CardBus												X
Direct Port (No Dongle)											X	X
Wake-On-LAN			X	X	X	X						
Flow Control			X		X	X	X	X	X	X		
VLAN					X	X	X	X	X	X		
Priority Queues					X	X	X	X	X	X		

* This is a 4-port 10/100Mbps Network Adapter



10/100Mb CARDBUS
NETWORK ADAPTER
DFE-690TXD



GIGABIT PCI
NETWORK ADAPTER
DGE-550T

SERVICEPLUS FREE FORWARD WARRANTY
REPLACEMENT*FOR FURTHER DETAILS:
GO TO WWW.DLINK.COM.AU*CONDITIONS APPLY

D-Link®
ServicePLUS

BROADBAND

VPN's & FIREWALLS

D-LINK'S NEW RANGE OF FIREWALL SECURITY PRODUCTS ARE STATE OF THE ART, ASIC-BASED HARDWARE SOLUTIONS DESIGNED TO PROTECT AGAINST ALL FORMS OF ATTACKS AGAINST YOUR LOCAL AREA NETWORK.

THE DFL RANGE OF FIREWALLS INCLUDE ADVANCED FEATURES SUCH AS POINT TO POINT VPN SUPPORT, INTRUSION DETECTION SYSTEM FOR PROTECTION AGAINST A MYRIAD OF ATTACKS, ANTI-VIRUS SCANNING, URL & CONTENT FILTERING FOR PROTECTION AGAINST VIRUS AND MALICIOUS CONTENT ATTACKS, AND POLICY-BASED RULES FOR PRECISE, YET EASY TO MANAGE CONFIGURATION AND MANAGEMENT.

ALONG WITH MORE COMMON FEATURES SUCH AS DHCP, NAT AND NAPT, RADIUS USER AUTHENTICATION AND A BUILT-IN PPP OVER ETHERNET CLIENT, THE DFL SERIES OF PRODUCTS OFFERS TRUE FIREWALL PROTECTION AT A NEW PRICE POINT FOR THE SECURITY CONSCIOUS MARKET.

WITH BROADBAND TAKING OFF IN THE REGION, A D-LINK FIREWALL OFFERS TO THOSE WITH PRECIOUS DATA OR CONTENT THAT MUST BE PROTECTED PEACE OF MIND IN AN INCREASINGLY INSECURE WORLD.



DI-804V



DFL-500

VPN AND FIREWALL

	DI-804V	DFL-500	DFL-1000
General			
IP Router	x	x	x
Switched 10/100 LAN Ports	4	1	1
RJ-45 WAN Port	1	1	1
External DMZ Port	-	-	1
Simultaneous VPN Tunnels	8	20	100
Concurrent Sessions	253	3000	10000
Stateful Packet Inspection	x	x	x
Intrusion Detection System	x	x	x
Anti-Virus Scanning		x	x
Content Filtering		x	x
Pattern Matching		x	x
DES/3DES Encryption	x	x	x
High Availability Option			x
Protocols Supported			
TCP/IP	x	x	x
UDP	x	x	x
ICMP	x	x	x
PPPoE	x	x	x
IP Routing	x	x	x
L2TP (p = Passthrough Only)	p	x	x
PPTP (p = Passthrough Only)	p	x	x
IPSec	x	x	x
Port Redirection & Filtering	x	x	x
Features			
Universal Plug'n'Play (uPnP)	x		
SNMP Management		x	x
Web Based Configuration	x	x	x
Network Address Translation	x	x	x
DHCP Support	x	x	x
DB-9 Console Port		x	x
RS-232 Backup Modem Port	x		



CONTACT D-LINK TO FIND OUT MORE
ON OUR NEW BOOST PROGRAM FOR
BROADBAND RESELLERS.



BROADBAND

ADSL MODEM/IP ROUTER/FILTER

ADSL

General	DSL-100D	DSL-200	DSL-300	DSL-300+	DSL-500	DSL-504	DI-704P	DI-707P	DI-804	DI-713P	DI-614+	DSL-10MF	DSL-10CF	DSL-10SP
PCI Device	x													
USB Device		x												
Ethernet Device			x	x	x	x	x	x	x	x	x			
Internet Gateway Device					x	x	x	x	x	x	x			
ADSL Modem Built-In	x	x	x	x	x	x								
Router capability					x	x								
Wireless Access Point										x	x			
In-Line Filter												x		
Central Filter/Splitter													x	x
ADSL Port (RJ-11)	1	1	1	1	1	1	-	-	-	-	-	2	3	1
RJ-45 WAN Port	-	-	1	1	1	1	1	1	1	1	1	-	-	-
Switched 10/100 LAN Ports	-	-	-	-	-	4	4	7	4	3	4	-	-	-
Protocols Supported														
TCP/IP	x	x	x	x	x	x	x	x	x	x	x			
UDP	x	x	x	x	x	x	x	x	x	x	x			
ICMP	x	x	x	x	x	x	x	x	x	x	x			
PPPoE e=need external client	e	e	e	x	x	x	x	x	x	x	x			
PPPoA	x	x			x	x								
Bridged Ethernet	x	x	x	x	x	x	x	x	x	x	x			
Routed Ethernet or IPoA					x	x								
IP Routing					x	x								
Port Redirection & Filtering					x	x	x	x	x	x	x			
Features														
SNMP Management			x	x	x	x								
Web Based Configuration				x	x	x	x	x	x	x	x			
Remote Telnet					x	x			x					
VPN Passthrough Support	x	x	x	x	x	x	x	x	x	x	x			
Network Address Translation					x	x	x	x	x	x	x			
DHCP Support					x	x	x	x	x	x	x			
Telstra BigPond Login Built-In							x	x	x	x				
Telstra Approved	x	x	x	x	x	x						x	x	x
Built-in Print Server							x	x		x				
DB-9 Console Port			x	x	x	x	x	x						
RS-232 Backup Modem Port									x					



DI-614+



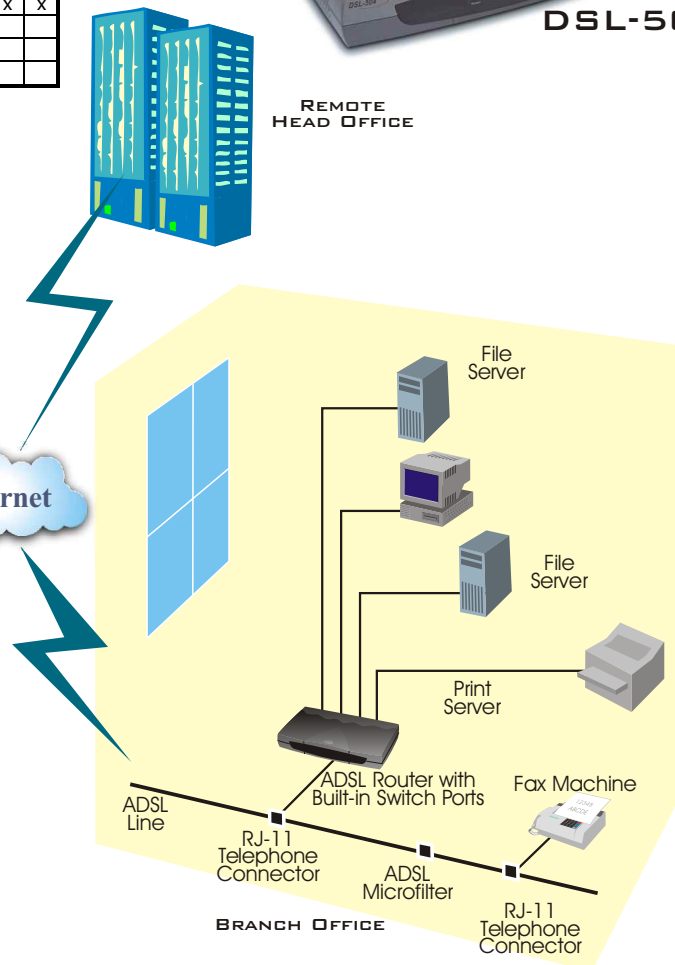
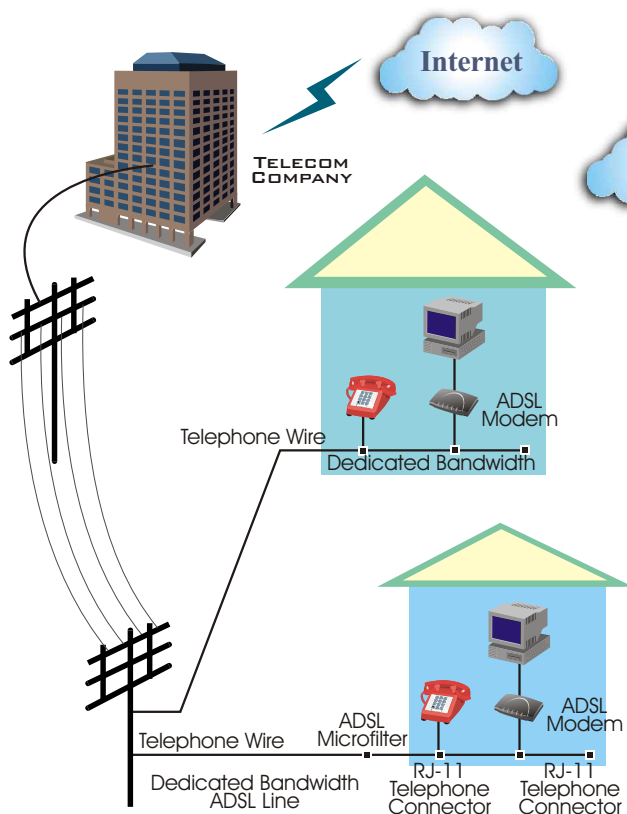
DI-704P



DSL-504

REMOTE HEAD OFFICE

ADSL CONNECTION FOR HOUSEHOLDS AND OTHER CONSUMER PREMISES



ADSL CONNECTION FOR SOHO AND REMOTE LANs

PRINT SERVERS

General		DP-101P+	DP-300+	DP-303	DP-313
10Base-T		X			
10Base-T / 100Base-TX			X	X	
802.11b Wireless					X
Parallel Port(s) with HP P/L Support		1	2	3	3
Serial Port(s)		-	1	-	-
Management via Browser		X	X		X
Management via Windows Based Program		X	X	X	X
Management via Telnet		X	X	X	X
Protocol Support					
IPX				X	
TCP/IP		X	X	X	X
NetBEUI		X	X	X	X
AppleTalk		X	X	X	X



PRINT SERVER
DP-101P+



PRINT SERVER
DP-300+

CHASSIS/STANDALONE MEDIA CONVERTERS

General		DMC-1000	DMC-1001	DMC-1002	DMC-300M	DMC-300SC	DMC-515SC	DMC-560SC	DMC-615SC	DMC-700SC	DMC-810SC
Media Converter					X	X	X	X	X	X	X
Standalone & Chassis System Use					X	X	X	X	X	X	X
Chassis System											
Chassis System unit		X									
Number of Slots for Media Converters		16									
Media Converters supported					X	X	X	X	X	X	X
SNMP Management Module				X							
Redundant Power Supply			X								
Rack-Mountable 19"		X									
Transceiver / Media Converter Type											
10Base-T/100BaseTX to 100Base-FX					X	X	X	X			
100Base-FX (Multimode) to 100Base-FX (Singlemode)									X		
1000Base-T to 1000Base-SX										X	X
Fiber Optic Specifications											
Multimode Fiber					X	X			X	X	
Singlemode Fiber							X	X	X		X
Distance					2km	2km	15km	60km	15km		10km
Connector Type (Fiber)					MTRJ	SC	SC	SC	SC	SC	SC

CHASSIS MEDIA
CONVERTER
DMC-1000



ALSO AVAILABLE AS
STANDALONE UNITS
DMC-300SC



INTERNET/SECURITY CAMERAS

General		DCS-1000	DCS-1000W
10Base-T / 100Base-TX		X	X
802.11b Wireless			X
Auxiliary Input / Output Connector		X	X
Resolution		640 x 480	640 x 480
Frame Rate:			
QCIF		30fps	30fps
CIF		20fps	20fps
VGA		3fps	3fps
Web Browser Configuration		X	X
Browser Support:			
Internet Explorer 5.0 or above		X	X
Netscape 6.0 or above		X	X
Remote Utility		X	X
TCP/IP, SNMP & HTTP		X	X
Windows 98, 98SE, 2000, ME, XP		X	X
Camera Stand Supplied		X	X



WIRELESS INTERNET
CAMERA
DCS-1000W

TO FIND OUT MORE
LOG ONTO

www.dlink.com.au
www.dlink.co.nz

NEW ADDRESS

D-Link Australia Pty Ltd
1 Giffnock Avenue
North Ryde, NSW, 2113

Ph: +61(02) 9417 7100

Fax: +61(02) 9417 1077

AVAILABLE FROM

D-Link
Building Networks for People