



IS Manager Server User's Guide

First Edition. (July. 1999)

6DP602MA..01
Printed In Taiwan



RECYCLABLE

Copyright Statement

Copyright © 1999 D-Link Corporation

No part of this publication may be reproduced in any form or by any means or used to make any derivative such as translation, transformation, or adaptation without permission from D-Link Corporation/D-Link Systems, Inc., as stipulated by the United States Copyright Act of 1976.

Trademarks

D-Link is a registered trademark of D-Link Corporation/D-Link Systems, Inc.

All other trademarks belong to their respective owners.

Limited Warranty

The software and reference material are provided “as is,” without warranty as to their performance, merchantability or fitness for any particular purpose. D-Link Corporation/D-Link Systems, Inc. reserve the right to revise this publication and to make changes to its contents at any time, without obligation to notify any person or entity of such revisions or changes.

Table of Contents

| | |
|--|-----------|
| ABOUT THIS GUIDE..... | 1 |
| INTRODUCTION | 2 |
| <i>Features</i> | <i>2</i> |
| <i>Requirements.....</i> | <i>3</i> |
| INSTALLATION..... | 5 |
| <i>Installing IS Manager Server.....</i> | <i>5</i> |
| <i>Starting IS Manager Server</i> | <i>6</i> |
| MAIN WINDOW..... | 7 |
| <i>Feature and Button Descriptions</i> | <i>7</i> |
| Active Users and Active Connections | 8 |
| Time Server | 8 |
| Password Lock..... | 8 |
| Connection List..... | 8 |
| Monitor | 9 |
| Trace | 10 |
| Display | 10 |
| Configure..... | 10 |
| View Log..... | 11 |
| View Statistics..... | 14 |
| List Information | 20 |
| Shut Down..... | 22 |
| BASIC CONFIGURATION | 23 |
| Users | 23 |
| Protocols..... | 24 |
| Destinations..... | 25 |

| | |
|--------------|----|
| General..... | 26 |
|--------------|----|

| | |
|------------------------------------|-----------|
| ADVANCED CONFIGURATION..... | 28 |
|------------------------------------|-----------|

| | |
|-------------------|----|
| User Filter | 28 |
|-------------------|----|

| | |
|----------------------|----|
| Protocol Filter..... | 31 |
|----------------------|----|

| | |
|-------------------------|----|
| Destination Filter..... | 33 |
|-------------------------|----|

| | |
|--------------------|----|
| <i>Index</i> | 36 |
|--------------------|----|

IS Manager Server

User's Guide

About This Guide

This guide explains how to install and use IS Manager Server. You will be provided with important information including a description of the software, a step-by-step installation procedure, and a detailed description of the software's functions.

IS Manager Server is designed to be installed and used in the Windows 95/98 or Windows NT 4.0 (or later) environment.

Before installing and running IS Manager Server, be sure to connect your Internet server and become familiar with its capabilities. See your Internet server hardware manual for installation instructions and function descriptions.

Important: *The Internet server being used with the IS Manager Server program must be told the IP address of the machine the IS Manager Server is installed on. See your Internet server user's guide for details.*

Introduction

This chapter introduces the IS Manager Server as well as going over the requirements for its use.

Features

IS Manager Server allows you to control Local Area Network (LAN) users' access to the Internet through use of an Internet server. IS Manager Server features include:

Monitor - Determines who's using the Internet at any given moment;

Filter - Controls who can access the Internet and which sites and protocols are used;

Log - Records who has accessed or attempted to access an external site;

Statistics - Compares, sorts, and analyzes Internet server data based on the Log;

Time Server – Supplies the Internet server with the current date and time based on the computer's real-time clock.

Requirements

We recommend that your system meet the following requirements to be able to use the IS Manager Server program:

- ◆ An IBM PC-compatible computer with a 386 or faster processor
- ◆ One of the following Microsoft operating environments:
 - ◇ Windows 95/98 or later
 - ◇ Windows NT 4.0 or later.
- ◆ 8 megabytes of main memory (RAM)
- ◆ At least 30 megabytes of free hard disk space
- ◆ A Windows-compatible mouse or other pointing device
- ◆ An Ethernet network card with appropriate drivers
- ◆ An Internet server that IS Manager Server is designed to work with (ordinarily these are sold together). It is assumed the Internet server is properly configured and operational. See your Internet server hardware manual for detailed configuration instructions.

You should also check your computer's settings:

- ◆ If you are using a screen resolution higher than 640 x 480 (standard VGA), you should use a "Small Fonts" setting.
- ◆ You need to have the TCP/IP network protocol enabled. IS Manager Server uses the TCP/IP protocol for communicating with the Internet server.

- ◆ Verify that the computer's TCP/IP address is on the same network and subnet as the Internet server.

When setting up the Internet server, the IP address of the machine that IS Manager Server is running on needs to be input under Manager Server IP Address in the Advanced Control Configuration submenu of the Internet server.

It is not necessary to run the IS Manager Server program on every workstation.



Installation

This chapter tells how to install the program, and how to start it.

Installing IS Manager Server

Follow the procedure outlined below to install IS Manager Server:

1. Insert the IS Manager Server installation disk into your system's 3.5" floppy drive (**A:** or **B:**).
2. Choose **Run...** from the **Start** menu on the taskbar. When the dialog box appears, type the pathname of the Setup program on the floppy drive (**A:\SETUP** or **B:\SETUP**) and click **OK**.
3. The Setup program will begin by copying some files and ask for your confirmation. Click the **Next >** button to continue.
4. The Setup program will then ask you to select a directory on your hard disk where you want it to install the IS Manager Server program. If you want a destination directory path other than the one shown, click the **Browse...** button to select it. Click the **Next >** button to continue the installation.
5. The setup program will copy IS Manager Server program files to the directory you selected, as well as create an IS Manager Server program group. Click the **Finish** button to complete the installation.

Once the installation is complete, you can begin using IS Manager Server.

Starting IS Manager Server

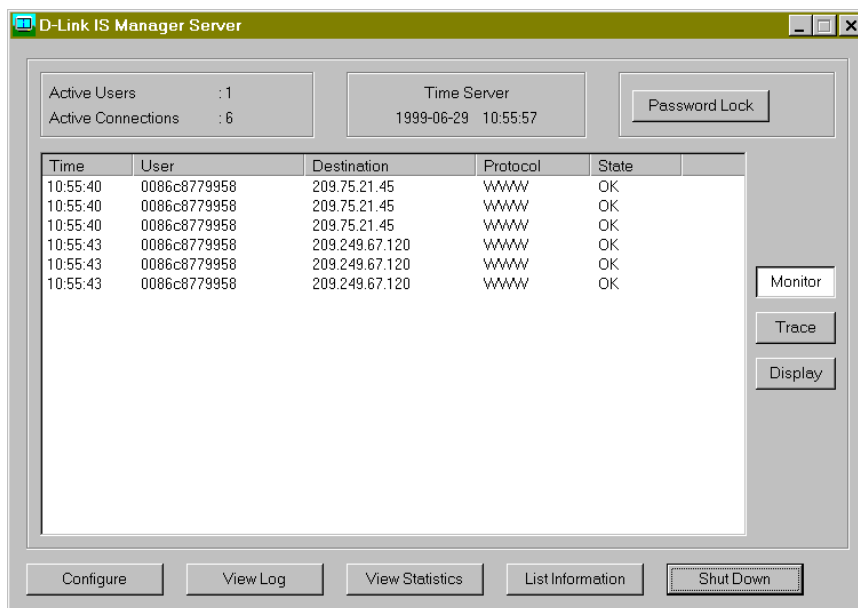
If you are using Windows 95/98 or Windows NT 4.0 (or a later version of Windows), to start the IS Manager Server program:

1. Click the **Start** button on the taskbar.
2. Open the **Programs** menu and select **D-Link IS Manager Server**.
3. Select **IS Manager Server** from the drop-down list.

The IS Manager Server program will then be ready for use. A sample IS Manager Server display is shown in the next section.

Main Window

This chapter describes the IS Manager Server main window displayed below:



Feature and Button Descriptions

Each item of the main window of IS Manager Server is briefly described below. For further information regarding basic configuration and advanced configuration please see the following two chapters.

Active Users and Active Connections

The left-hand side of the top part of the IS Manager Server window displays the number of Active Users and the number of Active Connections.

Time Server

Time Server information in the form of date--year, month, and day--and a running display of the current time--hours, minutes, and seconds--is displayed in the middle of the top part of the main window. This is obtained from the built-in clock of the PC that IS Manager Server is running on.

Password Lock

A password can be set by clicking the **Configure** button, clicking the General tabbed panel, and filling in the two text fields entitled Administrator Password and Confirm Password. After clicking **Save** to let the changes take effect, clicking the **Password Lock** button will lock the buttons on the main window. See the chapter entitled “Basic Configuration” for further information.

Connection List

This list displays the Time, User, Destination, Protocol, and State of the connections being monitored and controlled by the IS Manager Server. The maximum number of entries that can be listed at one time is set through the Configure function’s General tabbed panel. See the chapter entitled “Basic Configuration” for more details.

Use the scroll on the far right-hand side to move up and down in the connection list if necessary.

Each Connection List item is briefly described below:

- ◆ **Time** Time when the connection with an outside host was established.
- ◆ **User** MAC address of connected user, or name assigned for user through the Configuration function. See the Users section of the chapter entitled “Basic Configuration” for more information.
- ◆ **Destination** Host or server that the user has connected to on the outside.
- ◆ **Protocol** Number of protocol, or name assigned to protocol number through use of the Configuration function. See the Protocols section of the chapter entitled “Basic Configuration” for more information.
- ◆ **State** This will display “OK” if the machine did not filter out a connection and “Filtered” if a connection is blocked. The filter rules are established through the Configure function. See the chapter entitled “Advanced Configuration” for more information.

Monitor

The **Monitor** button is used for the continual update of connection list entries. If the maximum number of entries is reached, the main window will always display the most recent entries only (up to the maximum). This setting can be adjusted by clicking the **Configure**

button, clicking the General tabbed panel, and entering the desired figure in the Number of Monitor Entries to be Kept field. The factory default setting is 300, although it can be adjusted to a maximum of 9999 entries.

Trace

The **Trace** button is used to cap connection list entries at a user-provided number (see previous section). This function is especially helpful when the IS Manager Server administrator wants to stop the display of the connection list entries at a certain point and be able to scroll up and down between the beginning of the list and the end. This function prevents the oldest entry on the connection list from being deleted.

Display

The **Display** button is used to freeze the connection list at a given point in time.

Configure

The Configure window offers a wide array of functions allowing the IS Manager Server administrator to specify which LAN users are able to access the Internet through your Internet server, which protocols they can use, and which sites they are permitted to visit. A password option is also included in this section.

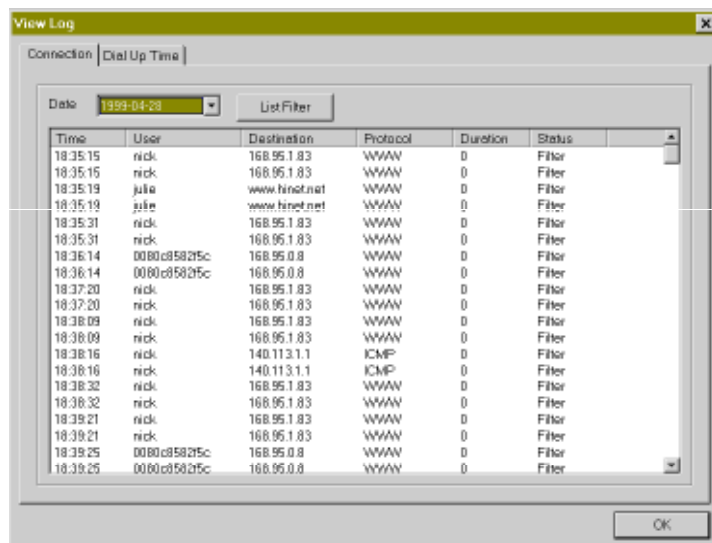
Click the **Configure** button to access seven tabbed panels, Users, Protocols, Destinations, General, User Filter, Protocol Filter, and Destination Filter. Each is described in detail in the following two

chapters: the first four are located under “Basic Configuration” and the latter three are under “Advanced Configuration”.

View Log

The View Log window features Connection and Dial Up Time tabbed panels.

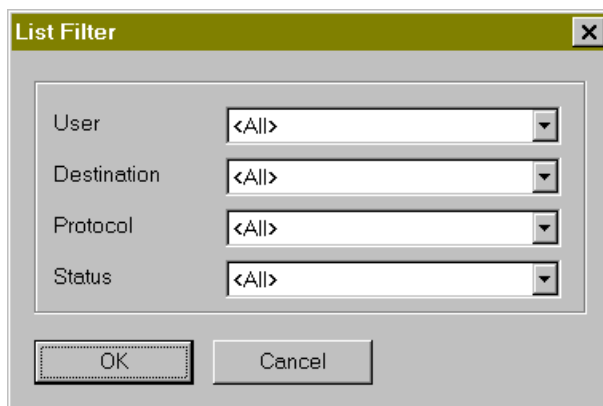
Click the **View Log** button to access the following Connection tabbed panel:



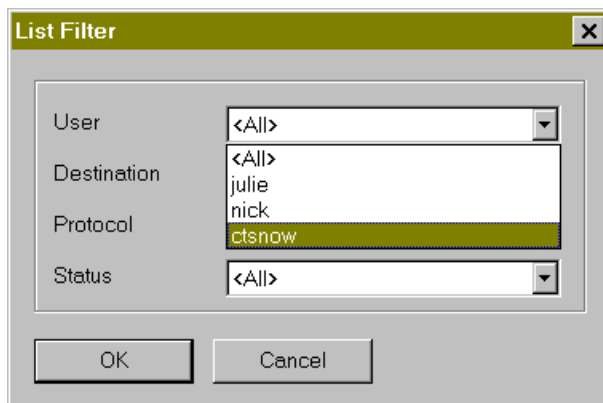
Note that the entry in the Duration column will read zero seconds if the connection is being filtered.

Select the desired Date from the drop-down list at the top of the table.

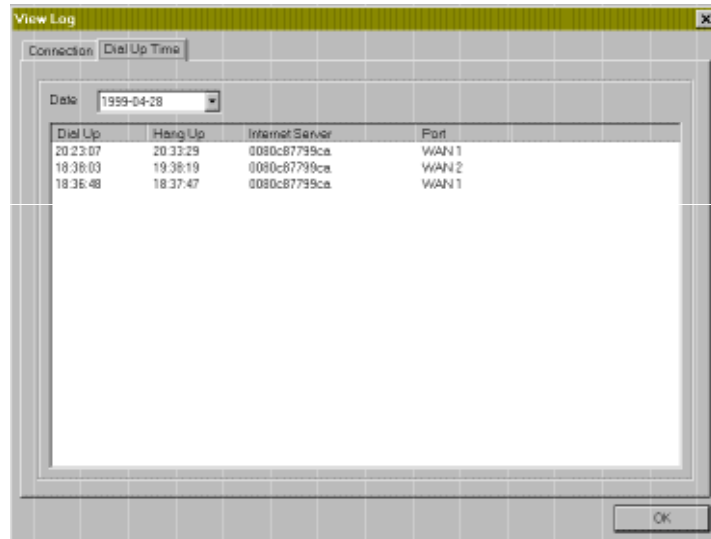
Clicking the **List Filter** button allows the IS Manager Server administrator to change the default control setting of “All” for User, Destination, Protocols, and Status. The List Filter dialog box looks like this:



For example, to change the User setting from “All”, highlight the drop-down list next to this control and choose “julie”, “nick” or “ctsnow”. See below:



To display dial up information, click **View Log** and then click **Dial Up Time**. The following Dial Up Time tabbed panel appears:



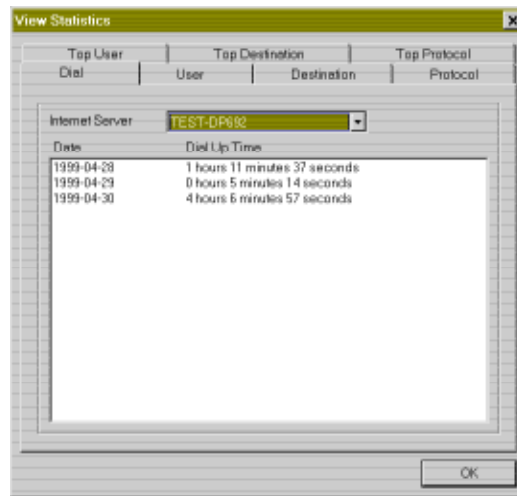
Select the desired Date from the drop-down list at the top of the table.

Each item in this panel is briefly described below:

- ◆ **Dial Up** Time when the phone line is first engaged.
- ◆ **Hang Up** Time when the phone line is disconnected.
- ◆ **Internet Server** MAC address of the Internet server.
- ◆ **Port** The type and number of the port through which the connection was made.

View Statistics

The View Statistics window features seven tabbed panels, Top User, Top Destination, Top Protocol, Dial, User, Destination, and Protocol. Click the **View Statistics** button to display the first tabbed panel, Dial:

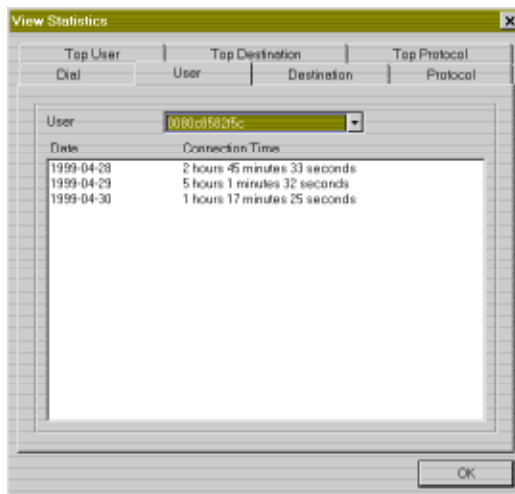


Select the desired Internet server from the drop-down list above the table.

Each item in this panel is briefly described below:

- ◆ **Date** Year, month, and day of list entry.
- ◆ **Dial Up Time** A sum total of phone line usage in one day.

The User tabbed panel looks like this:

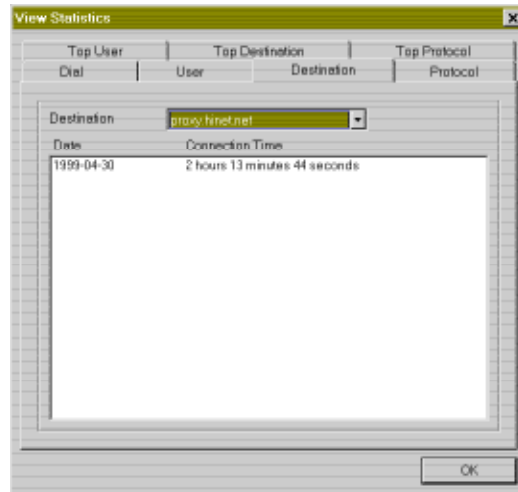


Select the desired User from the drop-down list above the table.

Each item in this panel is briefly described below:

- ◆ **Date** Year, month, and day of list entry.
- ◆ **Connection Time** A sum total of all connections for each day.

The Destination tabbed panel looks like this:

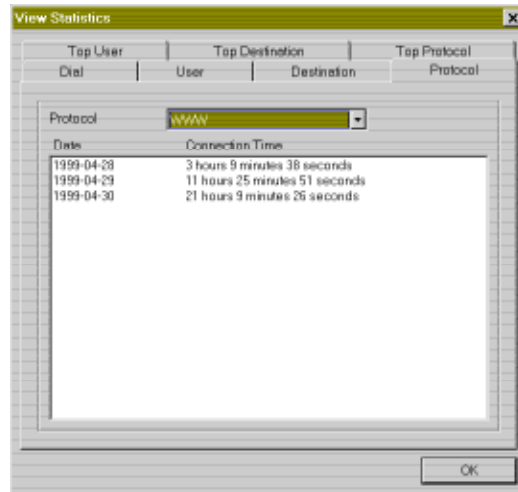


Select the desired Destination from the drop-down list above the table.

Each item in this panel is briefly described below:

- ◆ **Date** Year, month, and day of list entry.
- ◆ **Connection Time** A sum total of all connections for each day.

The Protocol tabbed panel looks like this:

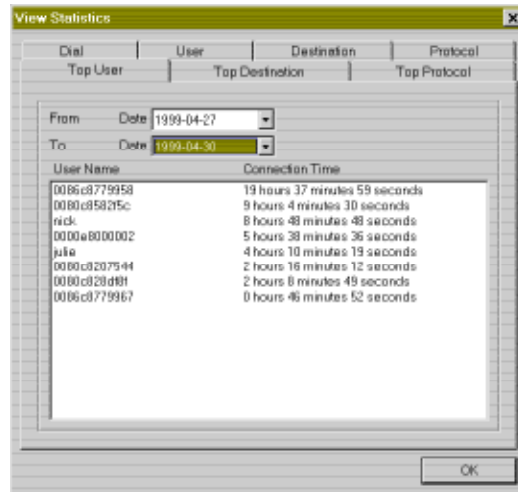


Select the desired Protocol from the drop-down list above the table.

Each item in this panel is briefly described below:

- ◆ **Date** Year, month, and day of list entry.
- ◆ **Connection Time** A sum total of all connections for each day.

The Top User tabbed panel looks like this:

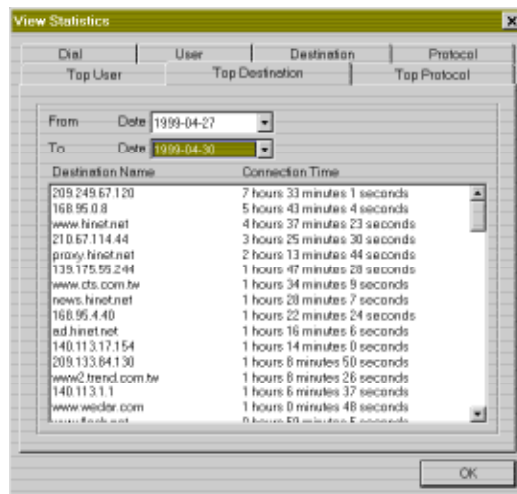


Select the desired range from the From Date and To Date drop-down lists above the table.

Each item in this panel is briefly described below:

- ◆ **User Name** MAC address of connected user, or name assigned for user through the Configuration function. See the Users section of the chapter entitled “Basic Configuration” for more information.
- ◆ **Connection Time** A sum total of all connections for a selected time period.

The Top Destination tabbed panel looks like this:

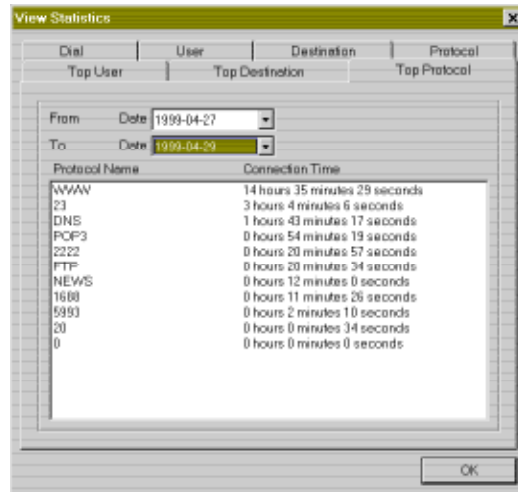


Select the desired range from the From Date and To Date drop-down lists above the table.

Each item in this panel is briefly described below:

- ◆ **Destination Name** IP address or name of host that the user has connected to on the outside.
- ◆ **Connection Time** A sum total of all connections for a selected time period.

The Top Protocol tabbed panel looks like this:



Select the desired range from the From Date and To Date drop-down lists above the table.

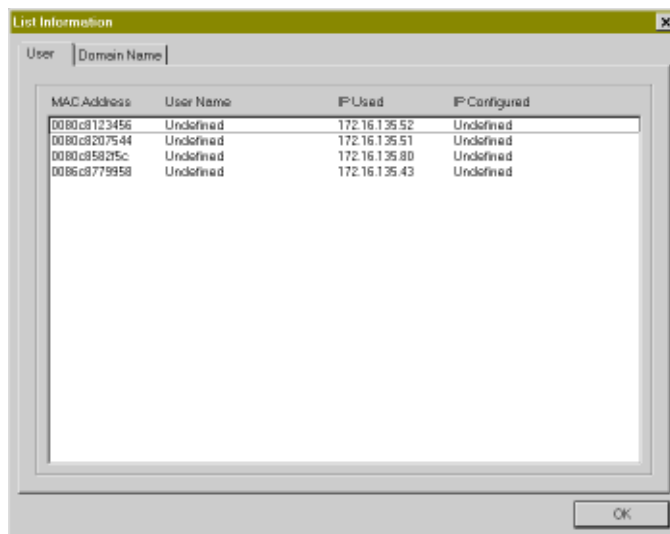
Each item in this panel is briefly described below:

- ◆ **Protocol Name** The name or number of the Protocol used during the connection.
- ◆ **Connection Time** A sum total of all connections for a selected time period.

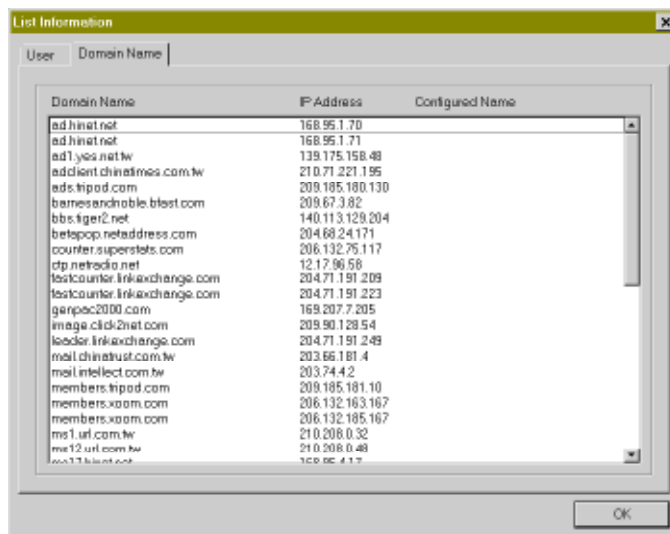
List Information

The List Information window features two tabbed panels, User and Domain Name.

To display users that have accessed the Internet in the past, click the **List Information** button. The following User panel appears:



To display names and IP addresses of the destinations that have been previously accessed, click the **List Information** button and then click **Domain Name**. The following Domain Name panel appears:



Shut Down

Click the **Shut Down** button to exit the IS Manager Server program.

NOTE:

Filtering can be done and logs can be kept only when IS Manager Server is running (either open or minimized).

Basic Configuration

This chapter covers the configuration of the following IS Manager Server functions: Users, Protocols, Destinations, and General.

Users

The Configuration window's Users tabbed panel allows user info to be entered for use in other sections of this program. This means a MAC address and an IP Address need not be entered each time you refer to them.

To access the first panel, click the **Configure** button. The Users panel appears:

The screenshot shows the 'Configure' window with the 'Users' tab selected. The window has a title bar 'Configure' and a close button. Below the title bar are tabs: 'Users', 'Protocols', 'Destinations', 'General', 'User Filter', 'Protocol Filter', and 'Destination Filter'. The 'Users' tab is active. It contains input fields for 'User Name' (ctsnow), 'Mac Address' (0080c84778bc), and 'IP Address' (172, 16, 135, 145). Below these fields is a table with three columns: 'User Name', 'MAC Address', and 'IP Address'. The table contains three rows of data. To the right of the table are 'Add' and 'Delete' buttons. At the bottom of the window are 'Save' and 'Cancel' buttons.

| User Name | MAC Address | IP Address |
|-----------|--------------|----------------|
| jule | 0080c86w652 | 172.16.135.11 |
| rick | 0080c8395ba3 | 172.16.135.16 |
| ctsnow | 0080c84778bc | 172.16.135.145 |

To add an entry, complete the User Name, Mac Address, and IP Address fields and then click **Add**. Click **Save** to allow the changes to take effect.

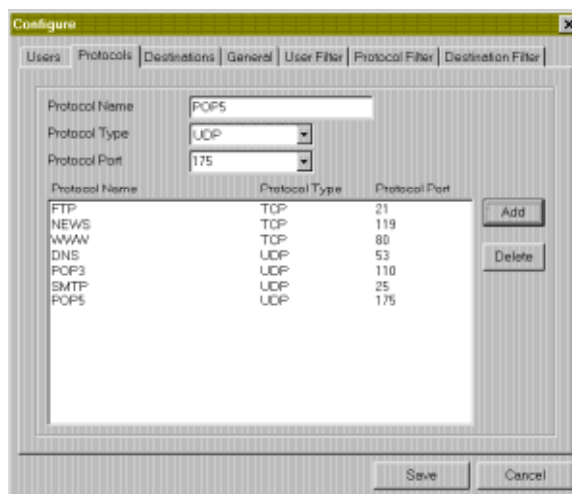
To delete an entry, highlight the item and click **Delete**. Click **Save** to allow the deletion to take effect.

Protocols

The Configuration window's Protocols tabbed panel allows names to be displayed in the Protocol column of the main window rather than numbers.

In addition, a Protocol Name must be set in this panel in order to set a Protocol Filter. See the Protocol Filter section in the next chapter for further details.

To access the Protocols panel, click the **Configure** button and then click **Protocols**. The following panel appears:



To add an entry, complete the Protocol Name, Protocol Type, and Protocol Port fields and then click **Add**. Click **Save** to allow the changes to take effect. Note that a number of Protocol Ports and their associated Protocol Names have been already entered. Select these from the Protocol Port drop-down list.

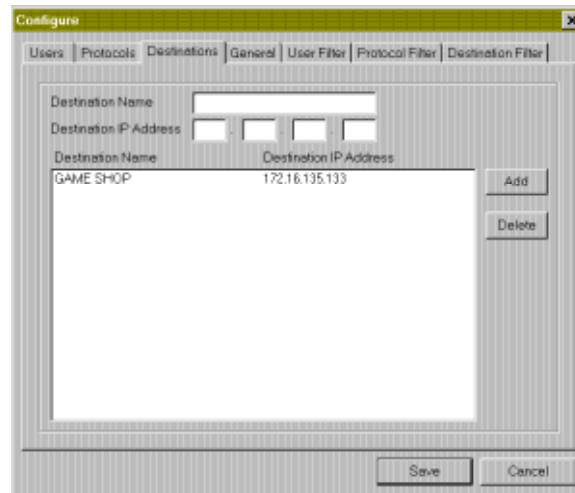
To delete an entry, highlight the item and click **Delete**. Click **Save** to allow the deletion to take effect.

Destinations

The Configuration window's Destinations tabbed panel allows the host that the user has connected to on the outside to be displayed in the Destination column of the main window rather than numbers.

In addition, a Destination Name must be set in this panel in order to set a Destination Filter. See the Destination Filter section later in this chapter for further details.

To access the Destinations panel, click the **Configure** button and then click **Destinations**. The following panel appears:



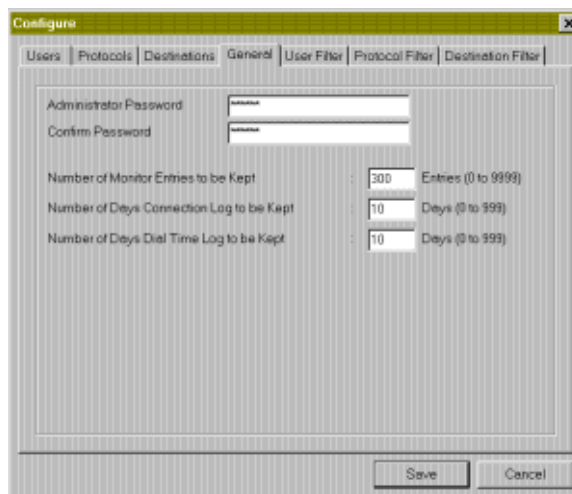
To add an entry, complete the Destination Name and Destination IP Address and then click **Add**. Click **Save** to allow the changes to take effect.

To delete an entry, highlight the item and click **Delete**. Click **Save** to allow the deletion to take effect.

General

The Configuration window's General tabbed panel contains fields to set passwords as well as connection list and log capacity fields for monitor entries, connection, and dial time.

To access this panel, click the **Configure** button and then click **General**. The following panel appears:

The image shows a 'Configure' dialog box with a title bar and a close button. It has several tabs: 'Users', 'Protocols', 'Destinations', 'General' (which is selected), 'User Filter', 'Protocol Filter', and 'Destination Filter'. In the 'General' tab, there are two password fields labeled 'Administrator Password' and 'Confirm Password'. Below these are three numeric input fields with labels and ranges: 'Number of Monitor Entries to be Kept' (300, 0 to 9999), 'Number of Days Connection Log to be Kept' (10, 0 to 999), and 'Number of Days Dial Time Log to be Kept' (10, 0 to 999). At the bottom right are 'Save' and 'Cancel' buttons.

To set a password for the IS Manager Server, complete the Administration Password and Confirm Password fields (a maximum size of 32 characters is allowed) and then click **Save**. If you set a password, you will be prompted to enter it whenever you begin a new session. Within a session, once you enter the password, the password lock will automatically be turned off. Click the **Password Lock** button on the Main Window to put it back on.

To remove the password, delete it in the two-aforementioned fields at the top of the panel.

The Number of Monitor Entries to be Kept field (up to 9999 entries, with a factory set default of 300), Number of Days Connection Log to be Kept field (up to 999 days, with a factory set default of 10), and Number of Days Dial Time Log to be Kept field (up to 999 days, with a factory default of 10) provide for additional control of system functions.

Advanced Configuration

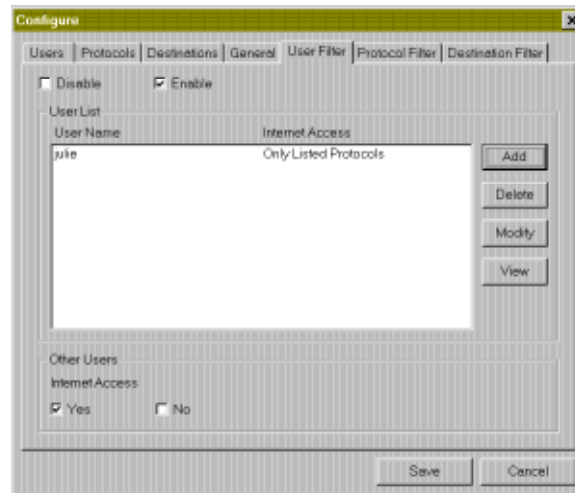
This chapter covers the configuration of the following IS Manager Server functions: User Filter, Protocol Filter, and Destination Filter.

Network and Internet connections utilize units known as packets. Among the information contained in a packet are the protocol, the destination, and the source. When a packet is sent, it must be passed through all three filters featured in the IS Manager Server, the user filter, the protocol filter, and the destination filter. If it doesn't meet a condition of any one, it will be filtered out, that is, blocked.

User Filter

The Configuration window's User Filter tabbed panel is for creating, enabling, and disabling filters for individual users. A user filter specifies whether a user has Internet access or not, or what protocols the user is allowed or prevented from using. For example, if a user named Nick has unrestricted Internet access (which means Yes is checked in the Edit User window under Internet Access), then he can use any Internet site, subject to the conditions set in the protocol and destination filters.

To access the panel, press the **Configure** button and then click **User Filter**. The following panel appears:



The default for the User Filter is Disable. Check Enable to activate this function.

To add a User Filter entry, click **Add**. An Edit User window will appear. See below for screen shot and explanation.

To remove an entry, highlight it and click **Delete**.

To change a User Filter entry, highlight it and click **Modify**. An Edit User window will appear. See below for screen shot and explanation.

To show the current settings, highlight a user entry and click **View**.

At the bottom of the panel, checkboxes allow Other Users to be granted Internet Access. Check Yes or No. If Yes is checked, then other users are permitted Internet access. If No is checked, then other users are not able to access the Internet.

The following Edit User window will appear when either adding or modifying an entry:

| Protocol Name | Protocol Type | Protocol Port |
|---------------|---------------|---------------|
| FTP | TCP | 21 |
| NEWS | TCP | 119 |
| WWW | TCP | 80 |
| DNS | UDP | 53 |
| POP3 | UDP | 110 |
| SMTP | UDP | 25 |

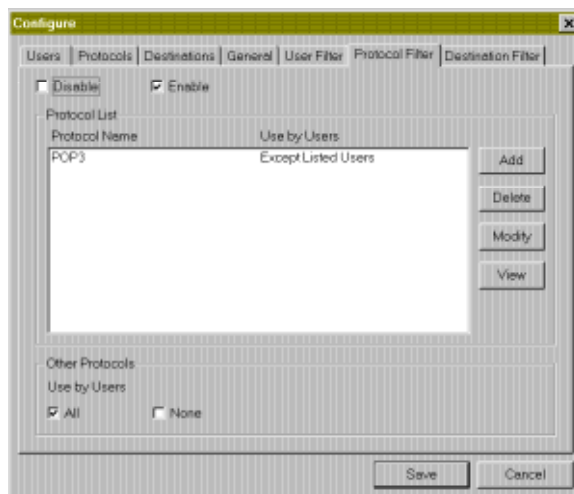
Select the user to edit from the User Name drop-down list at the top of the Edit User window. These User Names were entered in the Configuration window's Users tabbed panel. See the Users section of the chapter entitled "Basic Configuration" for more information.

Only one of the four checkboxes on the left-hand side of the Edit User window can be used at a single time. For example, if Yes is checked under Internet Access, a user will have unlimited Internet access. If No is checked, there will be no Internet access at all. The remaining two checkboxes restrict access to listed protocols or all protocols except those listed.

Protocol Filter

The Configuration window's Protocol Filter tabbed panel is for creating, enabling, and disabling protocol filters. A protocol filter blocks a particular protocol from being used. For example, if POP3 is being filtered, a mail application using this protocol will be unable to retrieve mail using POP3.

To access the panel, press the **Configure** button and then click **Protocol Filter**. The following panel appears:



The default for the Protocol Filter is Disable. Check Enable to activate this function.

To add a Protocol Filter entry, click **Add**. An Edit Protocol window will appear. See below for screen shot and explanation.

To remove an entry, highlight it and click **Delete**.

To change a Protocol Filter entry, highlight the entry, and click **Modify**. An Edit Protocol window will appear. See below for screen shot and explanation.

To show the current settings, highlight the entry and click **View**.

At the bottom of the panel, checkboxes control how unlisted protocols will be handled under Other Protocols. Check All or None under Use by Users. If All is checked, then users can use any protocol other than those specified in the protocol filter. If None is checked, then users are not able to use any protocol other than those permitted in the protocol filter (i.e. the first, third, and fourth options in the Edit Protocol window).

The following Edit Protocol window will appear when either adding or modifying an entry:

Protocol Name: TCP

Use by Users:

- ☐ All
- ☐ None
- ☒ Only Listed Users

User Name: jule

| User Name | Mac Address | IP Address |
|-----------|-------------|------------|
|-----------|-------------|------------|

Buttons: Add, Delete

Except Listed Users: ☒

User Name: jule

| User Name | Mac Address | IP Address |
|-----------|-------------|---------------|
| nick | 000c6395ba3 | 172.16.135.16 |

Buttons: Add, Delete

Buttons: OK, Cancel

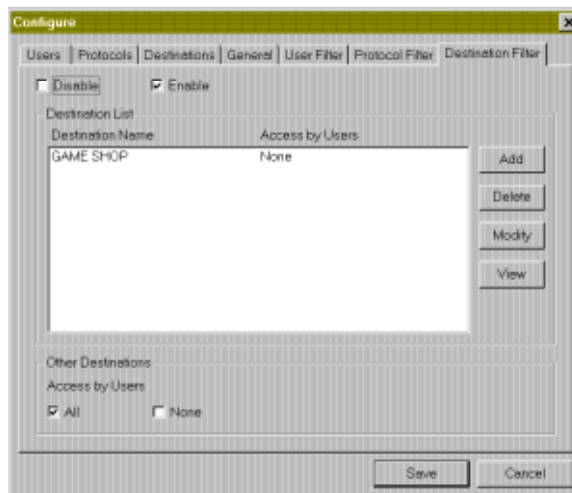
Select the protocol to edit from the Protocol Name drop-down list at the top of the Edit Protocol window.

Note that only one of the four checkboxes on the left-hand side of the Edit Protocol window can be used at a single time.

Destination Filter

The Configuration window's Destination Filter tabbed panel is for creating, enabling, and disabling destination filters. A destination filter prevents LAN users from accessing an outside host. For example, if 172.35.112.89 is being filtered, then all packets addressed to this destination will be dropped.

To access the panel, click the **Configure** button and then click **Destination Filter**. The following panel appears:



The default for the Destination Filter is Disable. Check Enable to activate this function.

To add a Destination Filter entry, click **Add**. An Edit Destination window will appear. See below for screen shot and explanation

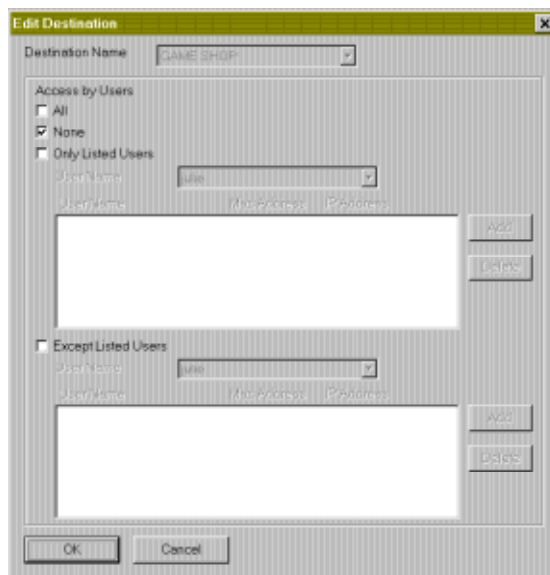
To remove an entry, highlight it and click **Delete**.

To change a Destination Filter entry, highlight it and click **Modify**. An Edit Destination window will appear. See below for screen shot and explanation

To show current settings, highlight the entry and click **View**.

At the bottom of the panel, checkboxes control how unlisted destinations will be handled under Other Destinations. Check All or None under Access by Users. If All is checked, then users can access any destination other than those specified in the destination filter. If None is checked, then users are not able to access any destination other than those permitted in the destination filter (i.e. the first, third, and fourth options in the Edit Destination window).

The following Edit Destination window will appear when either adding or modifying an entry:



Select the destination to edit from the Destination Name drop-down list at the top of the Edit Destination window.

Note that only one of the four checkboxes on the left-hand side of the Edit Destination window can be used at a single time.

Index

A

Active Connections, 8
Active Users, 8
Advanced Configura, 29

B

Basic Configuration, 24

C

Configure, 10
Connection, 11
Connection List, 8
Connection tabbed panel, 11
Connection Time, 16, 17, 18, 19, 20,
21

D

Date, 15, 16, 17, 18
Destination, 9, 14, 16, 17
Destination Filt, 34
Destination Name, 20
Destinations, 26
Dial, 14
Dial Up, 14
Dial Up Time, 13, 15
Dial Up Timel, 11
Display, 10
Domain Name, 21, 22

E

Edit Destination, 35

Edit Protocol, 32, 33
Edit User, 30, 31

F

Feature and button descriptions, 7
Features, 2
Filter, 2

G

General, 27

H

Hang Up, 14

I

Installation, 5
Internet Server, 14
Introduction, 2

L

List Filter, 12
List Information, 21, 22
Log, 2

M

Main Window, 7
Monitor, 2, 10

P

Password Lock, 8, 28
Port, 14
Protocol, 9, 14, 17, 18
Protocol Filter, 32
Protocol Name, 21
Protocols, 25

R

Requirements, 3

S

Shut Down, 23
State, 9

Statistics, 2

T

Time, 9
Time Server, 2, 8
Top Destination, 14, 19
Top Protocol, 14, 20
Top User, 14, 18
Trace, 10

U

User, 9, 14, 15, 16, 21
User Filter, 29
User Name, 19
Users, 24

V

View Log, 11, 13
View Statistics, 14