



PC UPGRADE  
Editor's choice  
2003



6th Annual  
**SUPERQuest**  
Awards  
Runner Up!  
**Super Quest**  
2003 Annual Award

## Internet Camera With Integrated Web Server & Motion Detection

The D-Link Internet Camera is a security system that allows you to watch and listen remotely. This full-featured camera connects to an Ethernet or wireless network in a building or campus, and to broadband Internet to provide you with high-quality video and audio. Equipped with built-in Web server, micro-phone for listening, motion detected image recording, time-saving trigger event playback, alert message and powerful software for multi-camera monitoring and management, this camera provides a comprehensive system for convenient surveillance from both a local site or remotely from anywhere in the world.

### Stand-alone System With Integrated Web Server

The DCS-2000 Internet Camera comes with a built-in CPU and Web server, providing a low-cost solution capable of solving demanding security and home/office monitoring needs. Its integrated Web server eliminates the need to connect the camera to a computer. Once installed, you use the built-in IP address to gain access to the camera, view live streaming video, and make changes to camera settings.

### Web-based Remote Access

You can install your camera at home then view the images from anywhere in the world on a computer running Internet Explorer. Directly connected to the Internet without going through any computer, this camera is simple to install and easily integrates with your network environment. This makes this camera an ideal solution for remote surveillance away from home or office.

### Multi-Camera Monitoring

Surveillance software is included to let you view up to 16 cameras on a single computer screen at one central location.

Images can be recorded to your computer's hard drive manually or according to a pre-set schedule. The camera can be connected to external alarms and sensors, and you can set up automated email alerts for sending through the Internet to alarm you instantly of all unusual happenings.

### Motion Detected Recording

Instead of recording 24 hours a day, 7 days a week, images can also be recorded only when motions are detected. This saves disk space and eliminates the time wasted to view unnecessary images. Images can be directly archived straight to your computer hard drive or to a Network Attached Storage. Playback consumes little time with triggered event browsing and fast database searching.

### High-Quality Video & Sound

The camera uses MPEG-4 Short Header Mode to stream live video at up to 30 frames per second for real-time viewing. A built-in high-quality microphone allows you to listen while watching live images.

## Features

- Stand-alone Internet camera with CPU & RAM, no need to attach to PC
- Simple to use with real-time monitoring
- Local access through Ethernet or wireless LAN
- Remote access from web browser
- Operates in Windows environments
- Surveillance software to control up to 16 cameras
- Motion detection triggered recording or scheduled recording
- Smart playback
- High compression ratio recording
- Connects to external devices for alarm-based event recording when trigger is activated
- Implemented for intruder detection with still image capture & e-mail notice
- Powerful software for image capture & video recording
- Web-based configuration

# DCS-2000

## Technical Specifications

## Internet Camera

### Camera Specifications

- 1/3 inch color CMOS sensor, interlace scan mode
- 24-bit RGB, 640 x 480 resolution
- Operating System: pSOS+ (real-time O.S.)
- Automatic Gain Control (AGC): 24dB
- Automatic Exposure (AE)
- Automatic White Balance (AWB)
- Electronics shutter: 1/60 ~ 1/15000 second
- Minimum illumination: 2.5lux @ f1.4
- Lens mounting: standard CS mount type lens, 6.0mm, f1.8

### Image (Video Setting)

- H.263+ (MPEG4 short header mode) data compression
- Compression ratio: 5 levels
- 3 adjustable image sizes and quality intelligent motion detection windows with flexible bit rate
- Time stamp and text overlay

### Audio

24Kbps

### Video Resolution

- Up to 30 fps at 160 x 120
- Up to 30 fps at 320 x 240
- Up to 10 fps at 640 x 480

### General I/O

- 1 opto-isolated sensor input (max. 12VDC 50mA)
- 1 relay output (max. 24VDC 1A, 125VAC 0.5A)

### Alarms

- Motion detection (activity detection)
- Periodical image transfers though e-mail and upload to a server using FTP

### Port

10/100Mbps 10BASE-T/100BASE-TX Fast Ethernet

### LED Indicators (bi-color status)

- System power and status indicators
- Network link and speed indicators

### Networking Protocols

TCP/IP, HTTP, SMTP, FTP, Telnet, NTP, DNS, DDNS, DHCP, UPnP

### Security

- Administrator and user group protected
- Password authentication

### Management

Configuration and system log via Web browser and FTP application remotely

### Software Update

Via TCP/IP network

### Viewing System Requirement

- Protocol: standard Internet TCP/IP suite
- Operating system: Microsoft Windows XP, 2000, ME or 98SE
- Browser: Internet Explorer 5.x or above

### Physical & Environmental

#### AC Power Input

Through 100 - 240 VAC, 50/60Hz external power supply unit

#### DC Power Input

12VDC 1.5A

#### Weight

Approx. 240 grams

#### Dimensions

135 (L) x 89 (W) x 57 (H) mm

#### Operating Temperature

5 C ~ 50 C

#### Storage Temperature

-10 C ~ 60 C

#### Humidity

20% ~ 90% non-condensing

#### Emission & Safety

- FCC Class B
- CE Class B
- LVD (En60950)



### Ordering Information

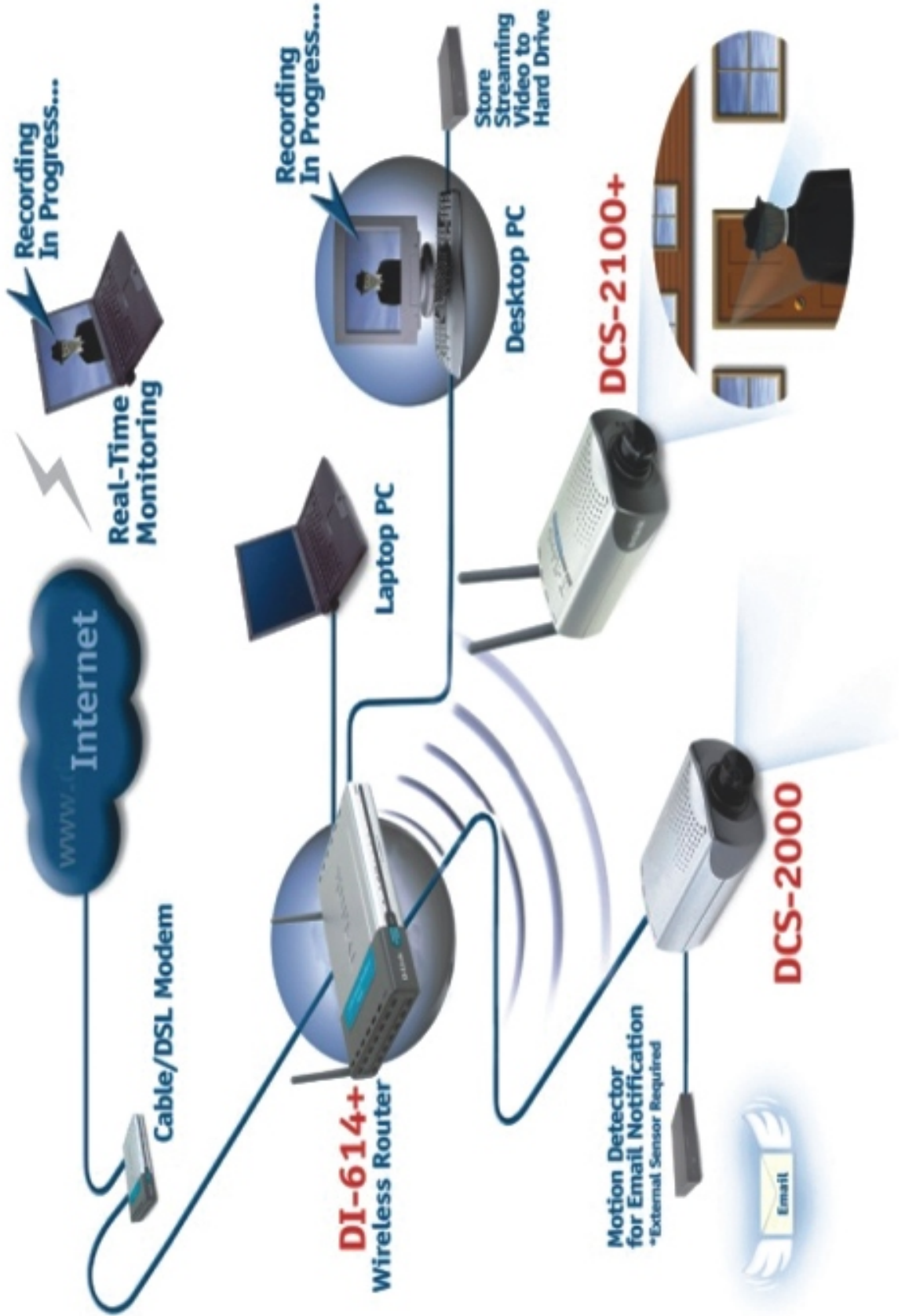
**Internet Camera**  
**DCS-2000** With 10/100Mbps Fast Ethernet Port



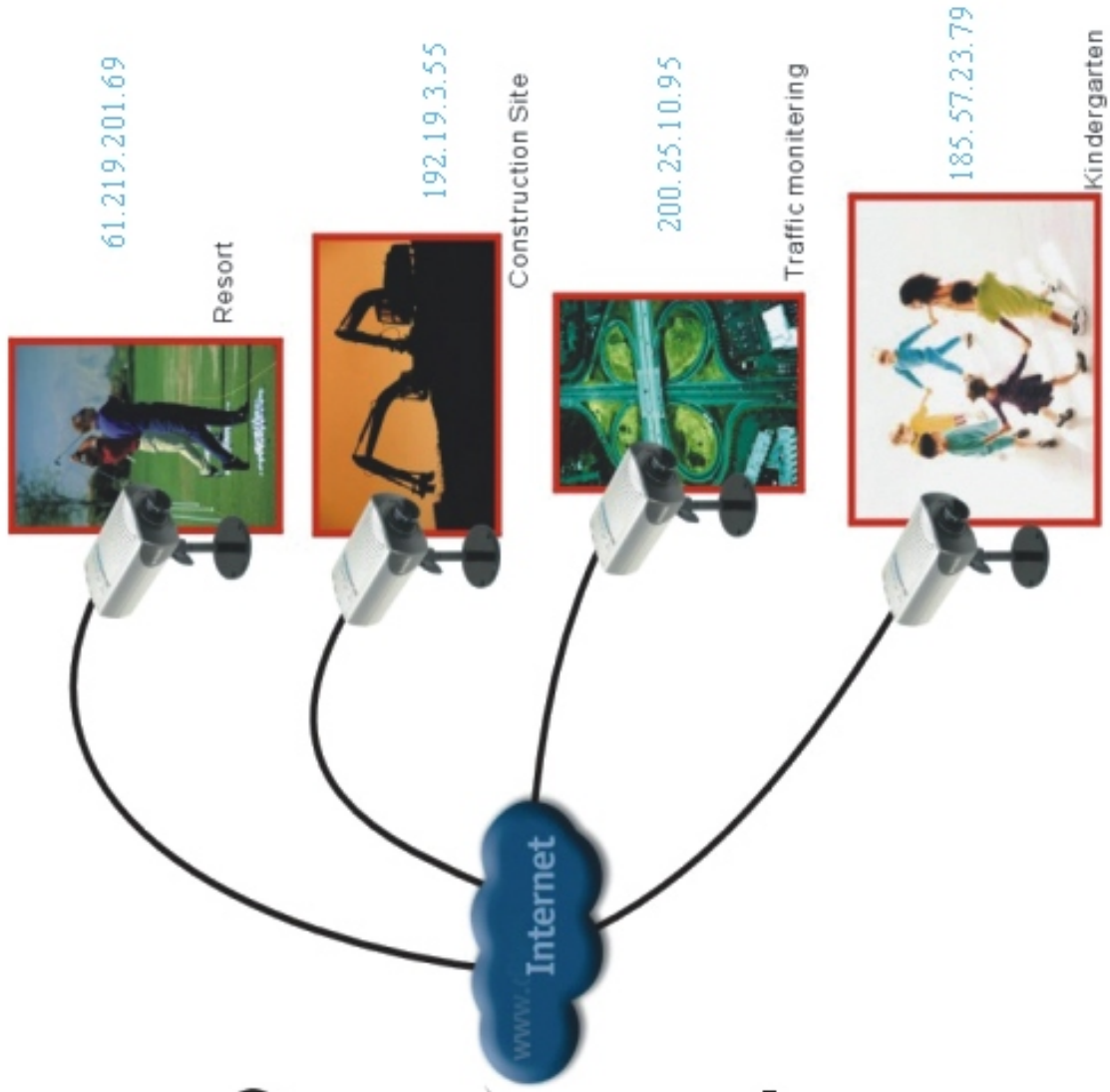
Specifications subject to change without prior notice.  
D-Link is a registered trademarks and SecurCam is a trademark of D-Link Corporation/D-Link System Inc. All other trademarks belong to their proprietors.

<b>U.S.A</b>	TEL: 1-714-885-6000	FAX: 1-866-743-4905
<b>Canada</b>	TEL: 1-905-8295033	FAX: 1-905-8295223
<b>Europe</b>	TEL: 44-20-8731-5555	FAX: 44-20-8731-5511
<b>Germany</b>	TEL: 49-6196-77990	FAX: 49-6196-7799300
<b>France</b>	TEL: 33-1-30238688	FAX: 33-1-30238689
<b>Netherlands</b>	TEL: 31-10-282-1445	FAX: 31-10-282-1331
<b>Belgium</b>	TEL: 32(0)2-517-7111	FAX: 32(0)2-517-6500
<b>Italy</b>	TEL: 39-2-2900-0676	FAX: 39-2-2900-1723
<b>Iberia</b>	TEL: 34-93-4090770	FAX: 34-93-4910795
<b>Sweden</b>	TEL: 46-(0)8564-61900	FAX: 46-(0)8564-61901
<b>Norway</b>	TEL: 47-23-897189	FAX: 47-22-309085
<b>Denmark</b>	TEL: 45-43-969040	FAX: 45-43-424347
<b>Finland</b>	TEL: 358-9-2707-5080	FAX: 358-9-2707-5081
<b>Singapore</b>	TEL: 65-6774-6233	FAX: 65-6774-6322
<b>Australia</b>	TEL: 61-2-8899-1800	FAX: 61-2-8899-1868
<b>China</b>	TEL: 86-10-5863-5800	FAX: 86-10-5863-5799
<b>India</b>	TEL: 91-022-2652-6696	FAX: 91-022-2652-8914
<b>Middle East (Dubai)</b>	TEL: 9714-3916480	FAX: 9714-3908881
<b>Turkey</b>	TEL: 90-212-335-2553	FAX: 90-212-335-2500
<b>Egypt</b>	TEL: 202-414-4295	FAX: 202-415-6704
<b>Israel</b>	TEL: 972-9-9715700	FAX: 972-9-9715601
<b>Latin America</b>	TEL: 56-2-232-3185	FAX: 56-2-232-0923
<b>Brasil</b>	TEL: 55-11-55039320	FAX: 55-11-55039322
<b>South Africa</b>	TEL: 27-1266-52165	FAX: 27-1266-52186
<b>Russia</b>	TEL: 7-095-744-0099	FAX: 7-095-744-0099#350
<b>Taiwan</b>	TEL: 886-2-2910-2626	FAX: 886-2-2910-1515
<b>D-Link Corp.</b>	TEL: 886-2-2916-1600	FAX: 886-2-2914-6299

# Typical Installation DCS-2000/DCS-2100+



# View Everywhere via Internet



## Real-time View ( Internet )



- (1) HTTP request to 61.219.201.69
- (2) HTTP request to 192.19.3.55
- (3) HTTP request to 200.25.10.95
- (4) HTTP request to 185.57.23.79

# View Remote Office via VPN

## Office Supervisor



DI-804V



- (1) HTTP request to 61.219.201.69
- (2) HTTP request to 61.219.201.69:81
- (3) HTTP request to 61.219.201.69:82
- (4) HTTP request to 61.219.201.69:83
- (5) HTTP request to 61.219.201.69:84

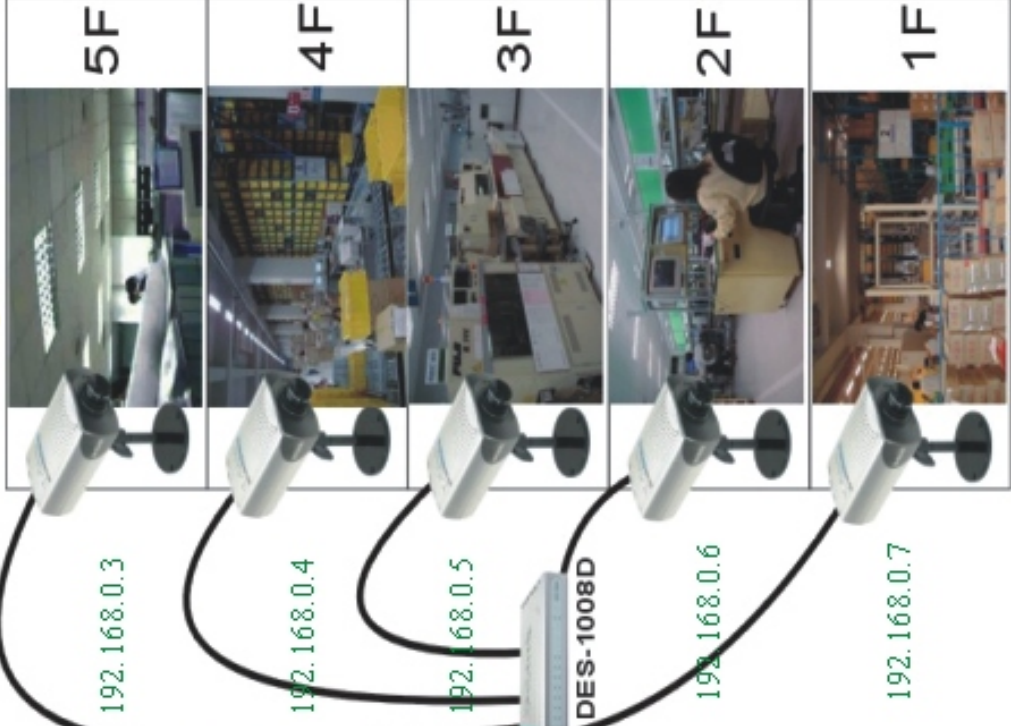
Translates  
61.219.201.69:80~84  
to 192.168.0.3~7

DI-804V



DES-1008D

## Factory



5F



4F



3F



2F



1F



192.168.0.3

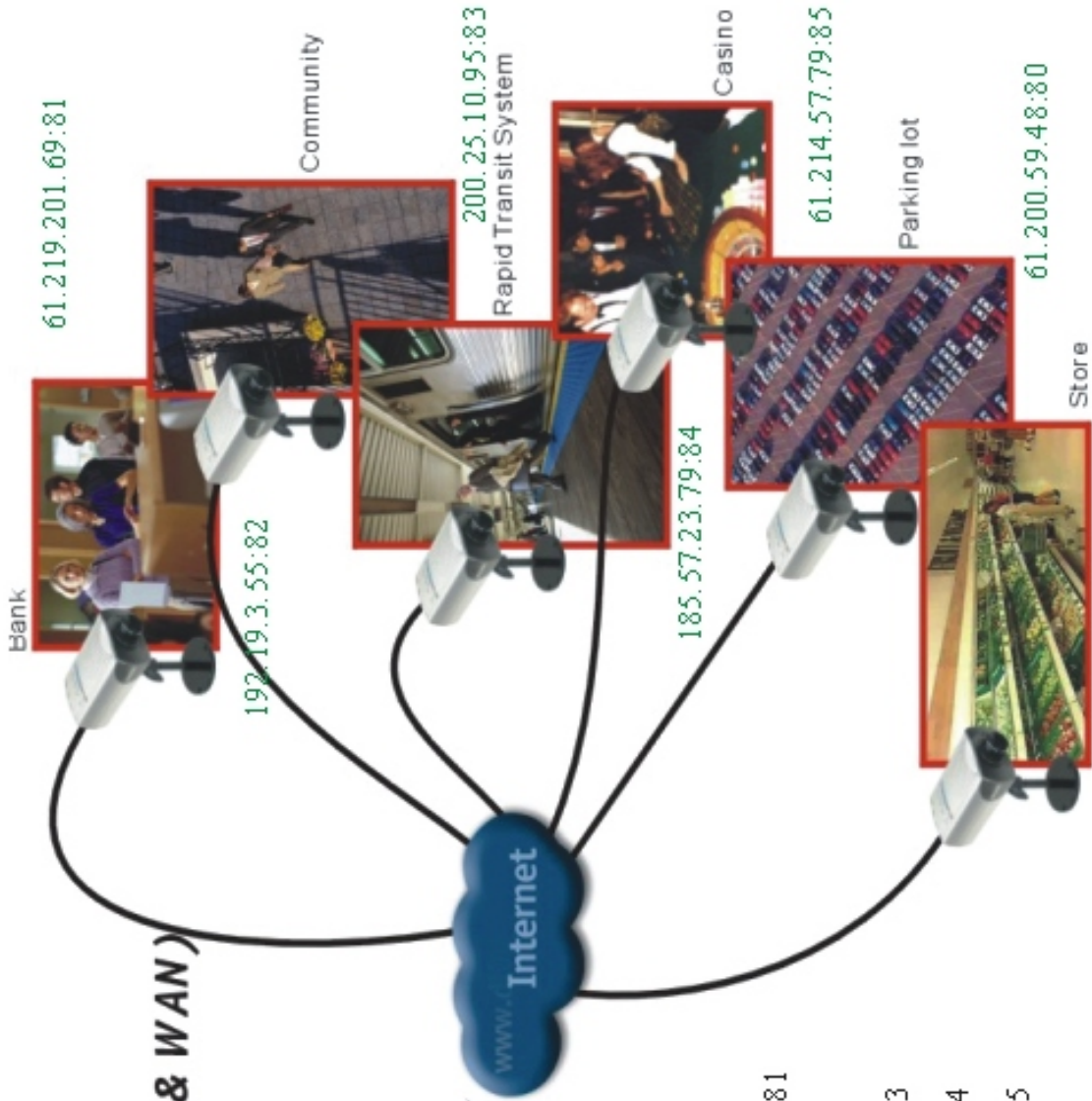
192.168.0.4

192.168.0.5

192.168.0.6

192.168.0.7

# Surveillance System

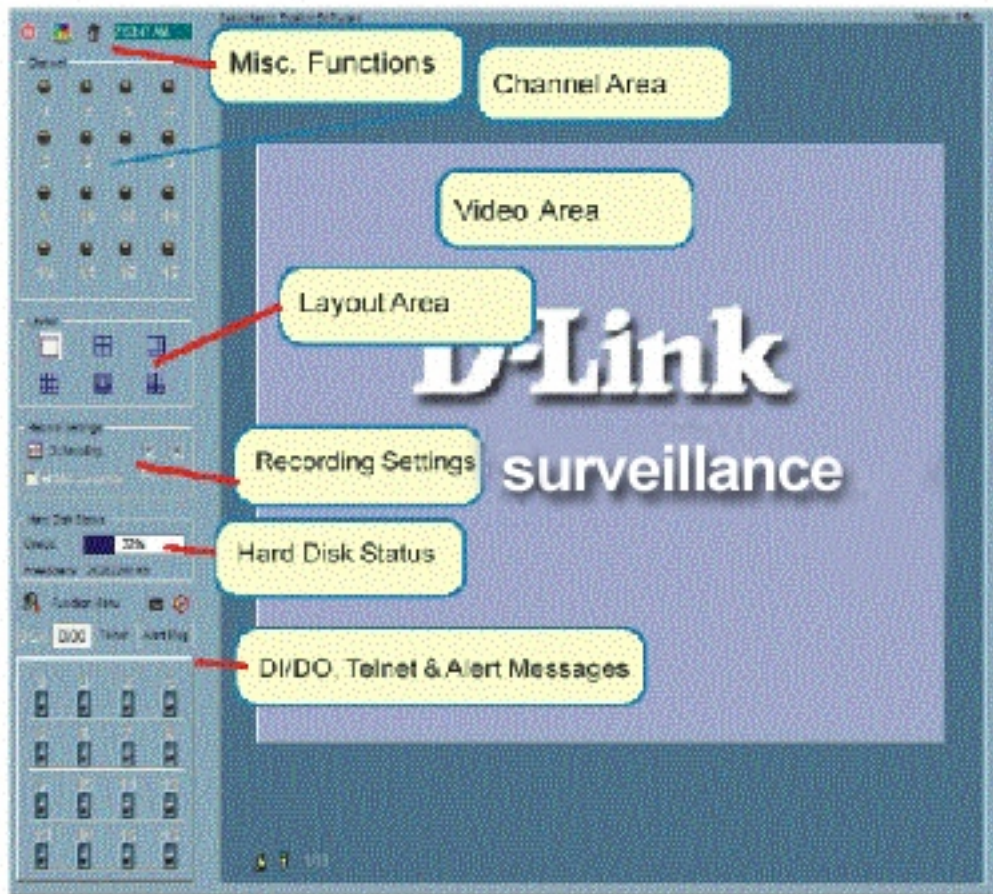


## Security & Recording (LAN & WAN)



- (1) HTTP request to 61.219.201.69:81
- (2) HTTP request to 192.19.3.55:82
- (3) HTTP request to 200.25.10.95:83
- (4) HTTP request to 185.57.23.79:84
- (5) HTTP request to 61.214.57.79:85
- (6) HTTP request to 61.200.59.48

Surveillance Software Questanding Function



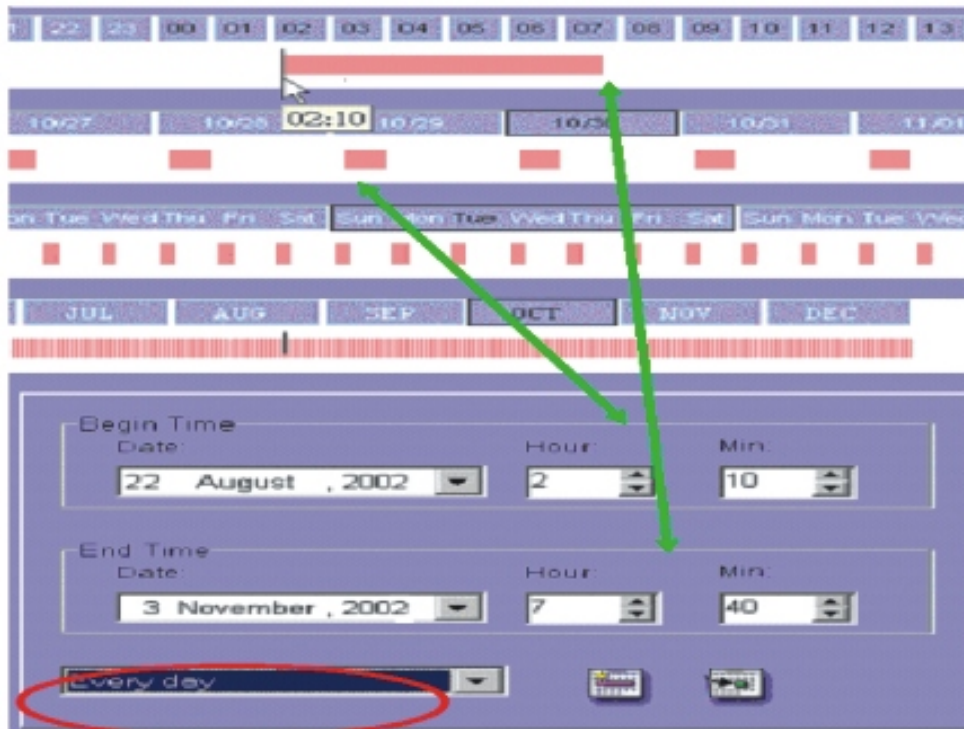
Channel Display (6 layouts)-

- Max 16 views



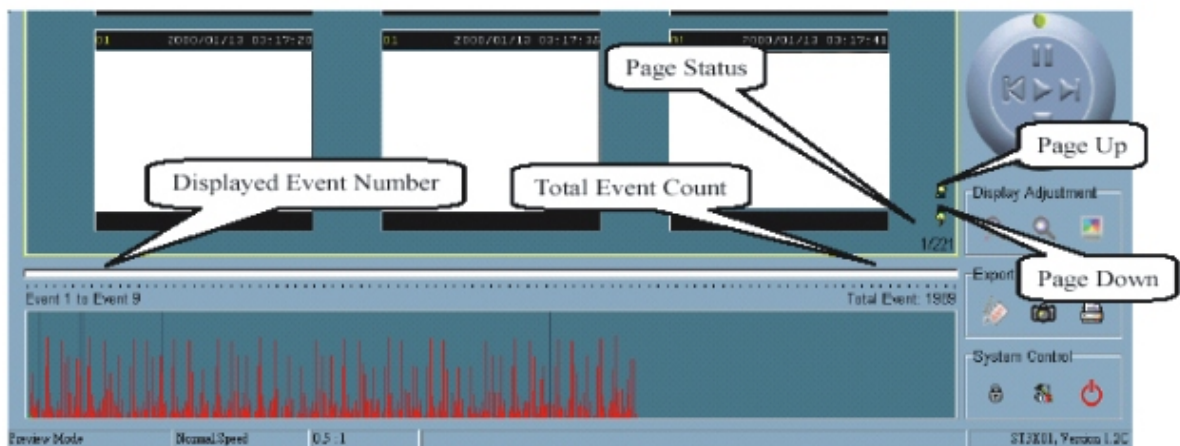
### Recording Mode

- Manual Control, event driven, scheduled



### Playback scheme

- Date, Time interval, and event triggering with preview for every camera



### Playback controls

- Play, Stop, Pause, Fast Forward, Slow Forward, Pull-bar, Zoom in, Zoom out

