

QUICK INSTALL GUIDE

DCS-3420

VERSION 1.0



D-Link®

SECURITY

System Requirements

- Windows® 2000 or XP
- At least 256MB of memory (512MB recommended)
- An available Ethernet connection
- Internet Explorer 6.x or higher Internet Web Browser
- VGA card resolution: 800x600 or above
- CPU: 1.7GHz or above processor (2.8GHz plus processor with 512MB memory and a 32MB video card is required for multiple camera viewing and recording in IP surveillance program)

Package Contents



DCS-3420
Wireless Day & Night Internet
Camera



CD-ROM with Manual and
Installation Wizard



Camera Stand



12V 1.5A AC Power Adapter



CAT5 Ethernet Cable



Antenna

If any of the above items are missing, please contact your reseller.

Hardware Overview

Connections

Power LED

The power LED is on the back of the camera. As soon as the power adapter is connected to the camera, the power LED will flash red and green several times, indicating that the DCS-3420 is conducting a self-test. Upon passing the self-test, the LED will turn green, indicating a good connection to an Ethernet port. A red LED indicates that no connection has been made.

DC Power Connector

The DC power input connector is located on the DCS-3420 Internet Camera's back panel and is labeled 12V DC with a single socket to supply power to the Internet Camera.



Ethernet Cable Connector

The Internet Camera's back panel features an RJ-45 connector for connections to 10Base-T Ethernet cabling or 100Base-TX Fast Ethernet cabling. This network port supports the NWay protocol, allowing the Internet Camera to automatically detect or negotiate the transmission speed of the network.

Microphone Connector

The DCS-3420 Wireless Day & Night Internet Camera has an internal microphone built-in. However, you have the option of using an external microphone by plugging it into the microphone connector.



Reset Button

Reset will be initiated when the reset button is pressed once and held until the Power LED flashes through its cycle twice.

Audio Out Connector

The DCS-3420 provides an Audio Out connector to be used for 2-way audio. Speakers (not included) may be connected to the camera to provide audio for 2-way communication.

Antenna Connector

The antenna is included with the DCS-3420. It fastens onto the antenna connector on the back panel to provide a connection with a wireless network.

BNC

The BNC connector is used for professional video connections. It benefits users who integrate digital IP camera into traditional system (CCTV) for both analog and digital video streaming purpose.

**I/O Connector**

The DCS-3420 provides a terminal block with two pairs of connectors situated on the back panel. One pair is for input and the other is for output. The I/O connectors provide the physical interface to send and receive digital signals to and from a variety of external devices.

Hardware Installation

Connect the Ethernet Cable

Connect an Ethernet cable to the network cable connector located on the Internet Camera's back panel and attach it to the network.



Note: It is required that an Ethernet cable is used during initial setup. Once your wireless configuration is set, you may disconnect the Ethernet cable and begin communicating wirelessly with your DCS-3420.

Attach the Antennas

Locate the antennas included with your DCS-3420 and attach them to the antenna connectors located on the back of the DCS-3420.



Attach the External Power Supply

Attach the external power supply to the DC power input connector located on the Internet Camera's back panel (labeled DC 12V) and connect it to an AC power outlet.



Note: When you have a proper connection, the LED will turn from red to green. The light may cycle on and off and your computer may show an intermittent loss of connectivity, this is normal until you have configured your Internet Camera.

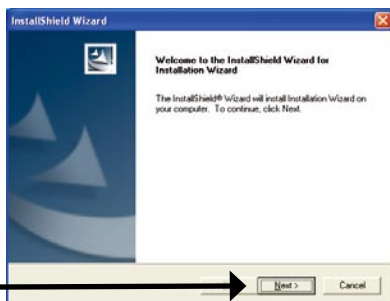
Software Installation

Insert the DCS-3420 CD into the CD-ROM drive. If the CD Autorun function does not automatically start on your computer, click Windows® Start > Run. In the Run command box type “**D:\DCS3420.exe**”, where D: represents the drive letter of your CD-ROM. If it does start, proceed to the next screen.

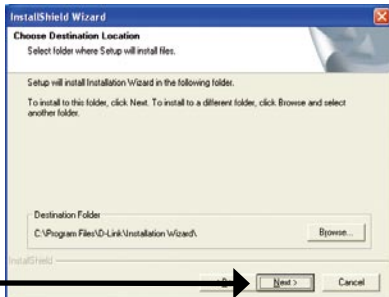
Click on **Installation Wizard**



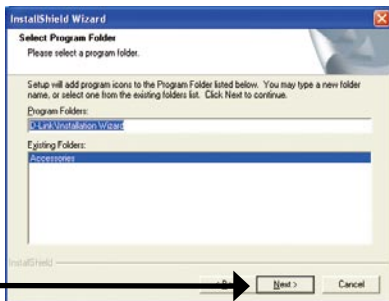
Click **Next**



Click **Next**



Click **Next**



Click **Finish**



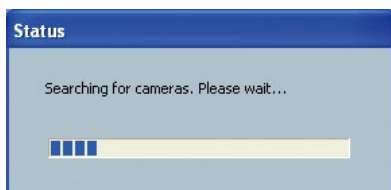
Configuring Your Camera with the Setup Wizard

Double click on the **Installation Wizard** icon that was created on your desktop.

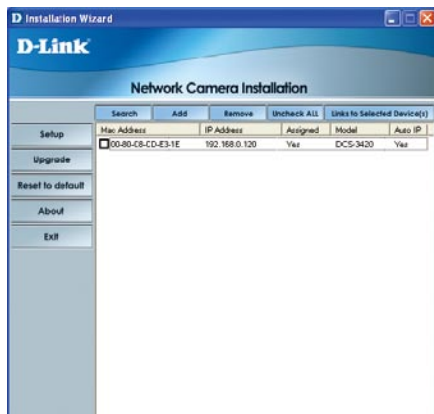
Double-Click



The software will search for cameras.

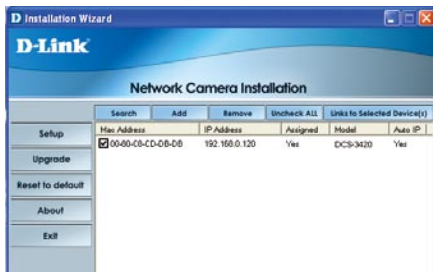


The Installation Wizard will appear and show the MAC address of the DCS-3420 and an IP Address (which may or may not be correct depending on what you have your DCS-3420 connected to). If you have a DHCP* server on your network, there will be a valid IP Address displayed here, indicated by a "Yes" under the assigned column.



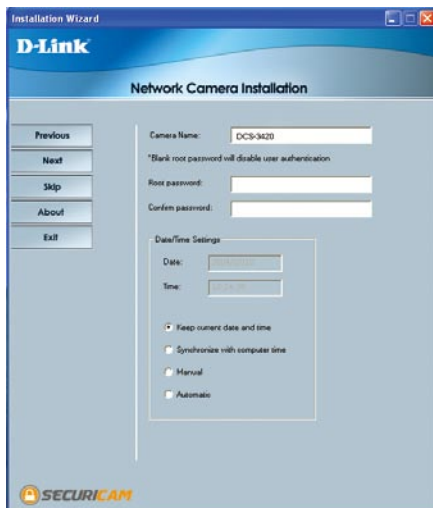
*A DHCP server is a device that supplies IP Addresses to its clients that are on the same network.

Click the **Setup** button



Enter an administrative password in the Root password and Confirm password fields.

Click the **Next** button

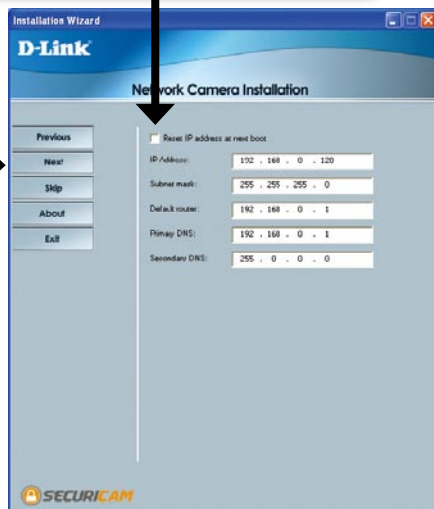


For details on the Date/Time Settings, please refer to the User Manual on the CD-ROM.

Uncheck the box labeled **Reset IP address at next boot**

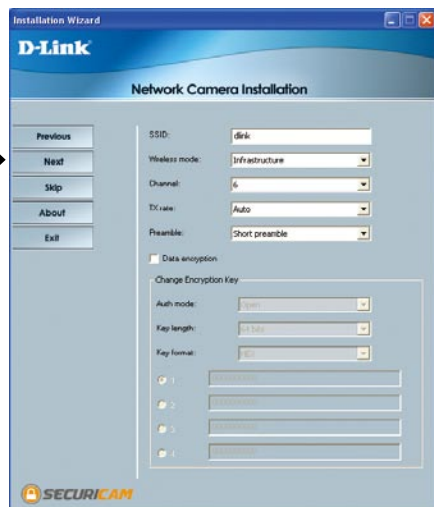
Click the **Next** button

If you need to modify the IP settings, please refer to the user manual on the CD-ROM.

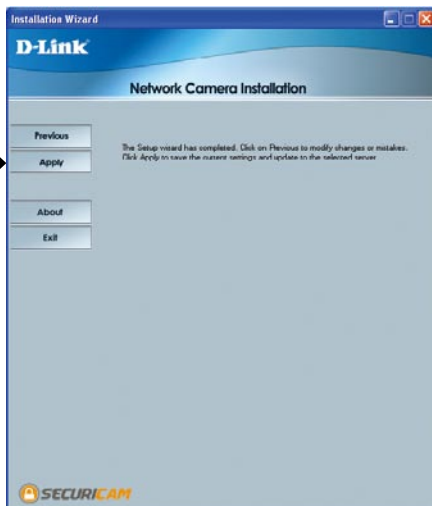


Click the **Next** button

Users can configure the Wireless Network Settings for the camera, by entering the SSID and selecting the Wireless Mode, Channel, TX Rate, and Preamble.

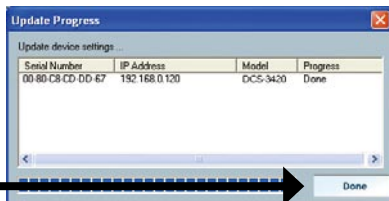


Click the **Apply** button



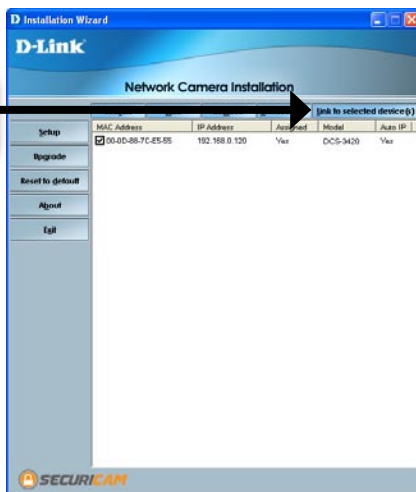
After the settings have been saved, the Done button will appear.

Click the **Done** button



Restart the camera by disconnecting and reconnecting the power cord from the back of the camera. This will switch the connection from wired to wireless. Wait until the light starts to blink green again indicating the wireless connection has been established.

Click the button labeled **Link to Selected Device(s)**



Viewing Your Internet Camera

After you click the button labeled **Link to Device(s)**, the Installation Wizard will automatically open your web browser to the IP address of the DCS-3420, in this example it is: `http://192.198.0.120`. Your DCS-3420 may have a different IP Address.

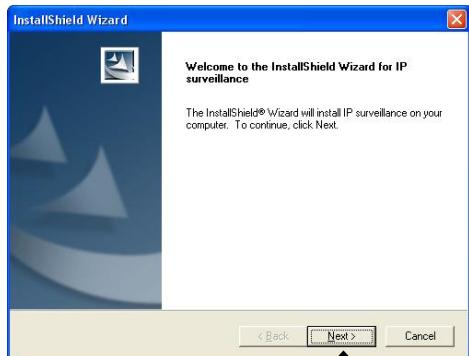


The installation and configuration of the DCS-3420 Wireless Internet Camera is now complete.

IP surveillance Installation

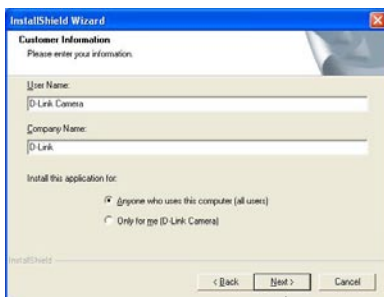
IP surveillance software is included for the administrator to manage up to 16 DCS-3420s remotely. The administrator can also record the video to hard drive and configure advanced settings. IP surveillance is a complete management tool and includes all configurative settings.

Insert the CD-ROM into the CD-ROM drive. A menu screen will appear as shown below.





Click Yes



Click Next

Create an Admin Password for the IP surveillance program.



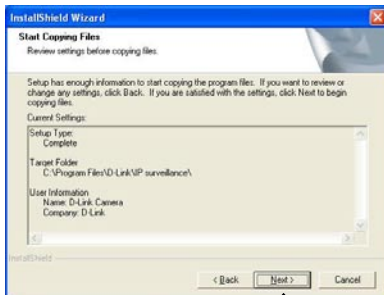
Click Next



Click Next



Click Next



Click Next

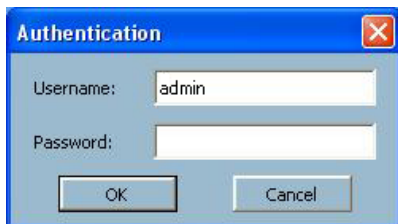


After successfully installing IP surveillance, the application program for the DCS-3420 is automatically installed to \Program Files\D-Link\IP surveillance Directory.

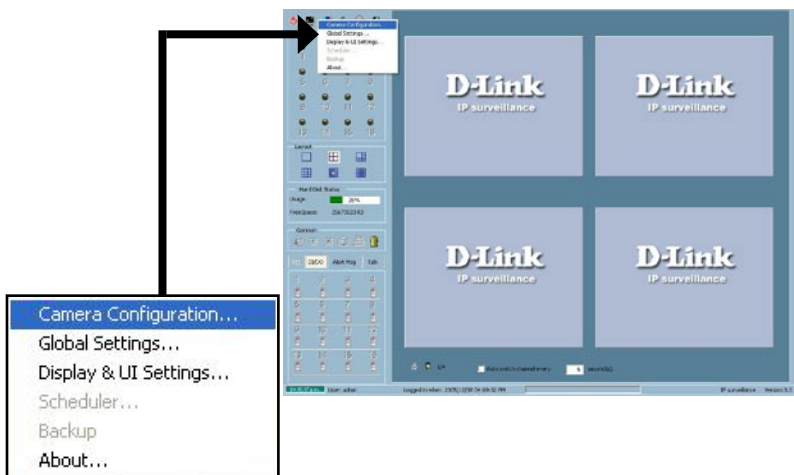
Add a Camera

To start IP surveillance, click on Windows® Start > Programs > D-Link > IP surveillance > Monitor.

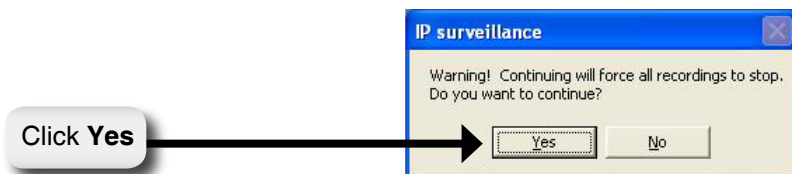
Once the Authentication screen appears, enter “admin” as your Username and the Password that was entered during the installation of IP surveillance.



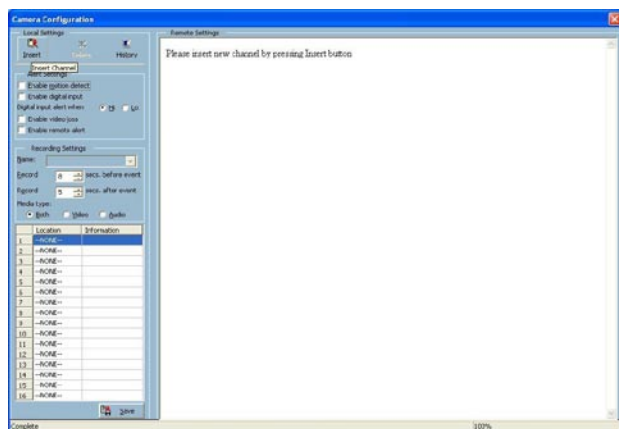
The IP surveillance Monitor screen will appear as shown below. On the menu to the left, click the Configuration button and select **Camera Configuration**.



After selecting Camera Configuration, a warning message will appear and all cameras will stop recording. Click Yes to continue.

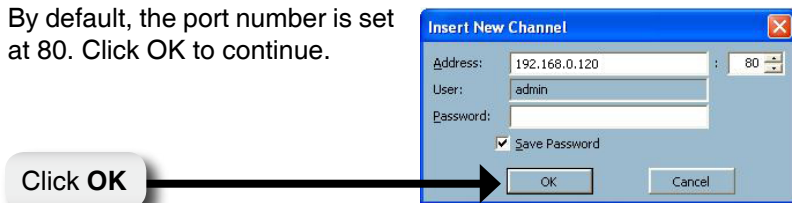


Click the **Insert Channel** button located in the upper left corner of the Camera Configuration screen.

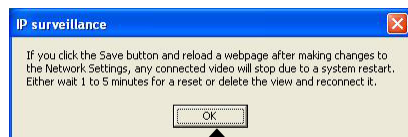
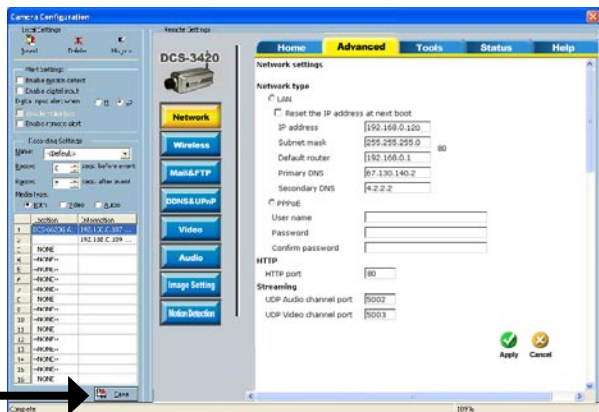


Enter the IP address of the camera you would like to add.

By default, the port number is set at 80. Click OK to continue.



When the camera screen appears to the right of the Configuration menu screen, this means that a connection has been established. Click the **Save** button at the bottom of the Configuration menu screen.



Click OK

Your IP surveillance Installation is Complete!

Notes

Notes

Technical Support

D-Link's website contains the latest user documentation and software updates for D-Link products.

U.S. and Canadian customers can contact D-Link Technical Support through our website or by phone.

United States

Telephone

(877) 453-5465

Twenty four hours a day, seven days a week.

World Wide Web

<http://support.dlink.com>

Canada

Telephone

(800) 361-5265

Monday through Friday, 7:30am to 9:00pm EST.

World Wide Web

<http://support.dlink.ca>



Version 1.0

May 19, 2006

620030400G

Copyright ©2006 D-Link Corporation/D-Link Systems, Inc. All rights reserved. D-Link and the D-Link logo are registered trademarks of D-Link Corporation or its subsidiaries in the United States and other countries. Other trademarks are the property of their respective owners. Maximum wireless signal rate based on IEEE Standard 802.11g specifications. Actual data throughput will vary. Network conditions and environmental factors, including volume of network traffic, building materials and construction, and network overhead lower actual data throughput rate. Product specifications, size and shape are subject to change without notice, and actual product appearance may differ from that depicted on the packaging. Visit www.dlink.com for more details.