



# DCS-900W

Internet Camera

## Manual

Version 1.40



**D-Link®**

Building Networks for People  
(10/04/04)

# Contents

Package Contents .....	3
Introduction .....	4
Hardware Installation .....	9
Security .....	10
Using the Setup Wizard .....	11
DCS-900W Configuration .....	17
Installing the DCS-900W Behind a Router .....	27
IPView Lite Application Installation .....	41
IPView Lite .....	46
Uninstall IPView Lite Application .....	78
Appendix (FAQ, Troubleshooting, How to Ping Your IP Address Time Zone Table, Active X Installation) .....	80
Technical Specifications .....	93
Contacting Technical Support .....	95
Warranty .....	96
Registration .....	99

# Package Contents



## Package Contents:

One DCS-900W Internet Camera

One Installation CD-ROM

One 802.11b Antenna

One AC power adapter

One Camera Stand

One Category 5 Ethernet Cable

If any of the above items are missing, please contact your reseller.

## System Requirements:

**Local Area Network:** 10Base-T Ethernet or 100BaseTX Fast Ethernet

**Wireless Local Area Network:** 802.11b Wireless Router or Access Point

**Recommended:** PC, Mac or Notebook to access the Internet Camera

### Web Configuration

- Java Enabled and Compliant Web Browser (recommended)
- CPU: Pentium III, 450MHz or above
- Memory Size: 128MB recommended
- VGA card resolution: 800x600 or above

### IPView Lite Configuration

- Windows XP, Me, 2000, 98SE
- CPU: Pentium III, 850MHz or above
- Memory Size: 128MB (256MB recommended)
- VGA card resolution: 800 x 600 or above

# Introduction

Congratulations on your purchase of the DCS-900W Internet Camera! The DCS-900W is a versatile and unique solution for your small office or home. Unlike a PC Camera, the DCS-900W is a stand-alone system with a built-in CPU and Web server that transmits high quality video images for monitoring. The DCS-900W can be accessed remotely, and controlled from any PC/Notebook over the Intranet or Internet via a web browser. The simple installation procedure and intuitive web-based interface offer easy integration with your Ethernet/Fast Ethernet or 802.11b wireless network. The DCS-900W also comes with remote monitoring capability for a complete and cost-effective home security solution.

## Features & Benefits

### Simple to Use

The DCS-900W is a stand-alone system with a built-in CPU, requiring no special hardware or software such as PC frame grabber cards. The DCS-900W supports both ActiveX mode for Internet Explorer and Java mode for Internet Explorer and Netscape Navigator. All that is required is a computer with current Web browser software.

### Supports a Variety of Platforms

Supporting TCP/IP networking, HTTP, and other Internet related protocols, the DCS-900W can be utilized in a mixed operating system environment such as Windows, Unix, and Macintosh. It can also be integrated easily into other Internet/Intranet applications because of its standards-based features.

### 802.11b Wireless or Ethernet/Fast Ethernet Support

The DCS-900W offers both 802.11b wireless and Ethernet/Fast Ethernet connectivity, making the DCS-900W easy to integrate into your existing network environment. The DCS-900W works with a 10Mbps Ethernet based network or 100Mbps Fast Ethernet based network for traditional wired environments and works with 802.11b routers or access points for added flexibility.

\*Maximum wireless signal rate based on IEEE Standard 802.11b specifications. Actual data throughput will vary. Network conditions and environmental factors, including volume of network traffic, building materials and construction, and network overhead lower actual data throughput rate.

# Features & Benefits *(continued)*

## **Web Configuration**

Using a standard Web browser, Administrators can configure and manage the Internet Camera directly from its own Web page via the Intranet or Internet. This means you can access your DCS-900W at anytime from anywhere in the world!

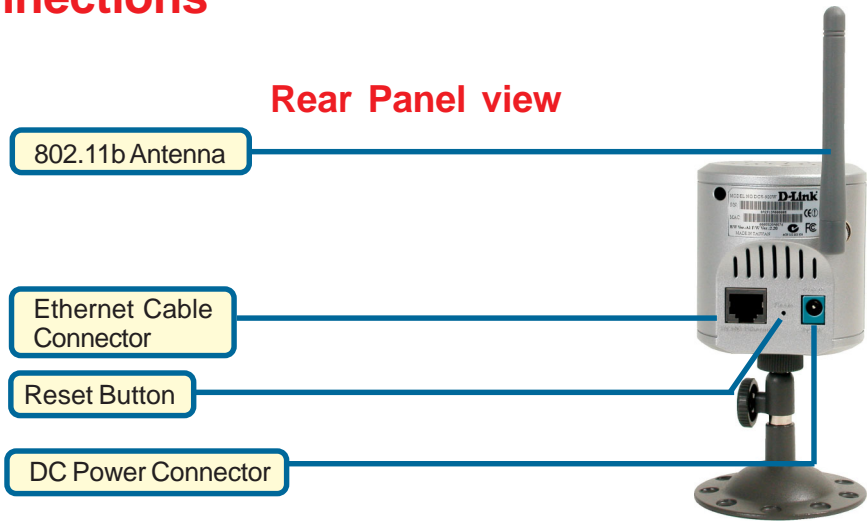
## **Remote Monitoring Utility**

The IPView Lite application adds enhanced features and functionality for the Internet Camera and allows administrators to configure and access the Internet Camera from a remote site via Intranet or Internet. Other features include image monitoring, recording images to a hard drive, enabling motion detection, updating firmware, viewing up to 4 cameras on one screen, and taking snapshots.

## **Broad Range of Applications**

With today's high-speed Internet services, the Internet Camera can provide the ideal solution for live video images over the Intranet and Internet for remote monitoring. The Internet Camera allows remote access from a Web browser for live image viewing and allows the administrator to manage and control the Internet Camera at anytime, from anywhere in the world. Many applications exist, including industrial and public monitoring of homes, offices, banks, hospitals, child-care centers, and amusement parks.

# Connections



## 802.11b Antenna

The DCS-900W features an 802.11b wireless antenna for 802.11b wireless connectivity to your existing wireless network. The DCS-900W can be used in conjunction with an 802.11b compliant access point or router.

## Ethernet Cable Connector

The DCS-900W features an RJ-45 connector for connections to 10Base-T Ethernet cabling or 100Base-TX Fast Ethernet cabling (which should be Category 5 UTP cable). The port supports the NWay protocol, allowing the DCS-900W to automatically detect or negotiate the transmission speed of the network.

## DC Power Connector

The DC power input connector is labeled **DC 5V** with a single jack socket to supply power to the DCS-900W.

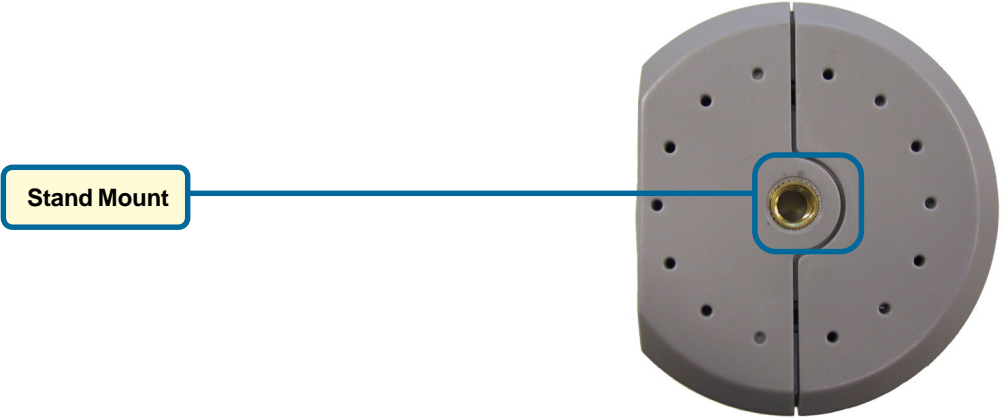
## Reset Button

Reset will be initiated when the reset button is pressed once and Power LED begins to flash.

Factory Reset will be initiated when the reset button is pressed continuously for three seconds or when the Power LED begins to light up. Release the reset button and the Power LED will begin to flash indicating that the DCS-900W's settings are reverting back to the factory settings. The IP address will also return to the default setting of 192.168.0.20.

# Connections *(continued)*

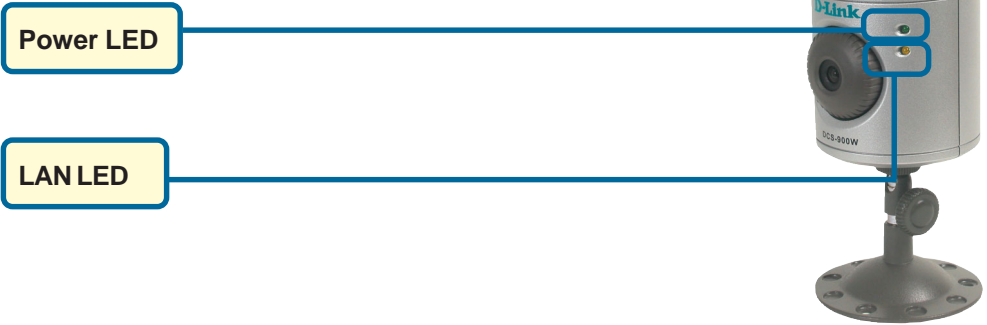
## Bottom Panel view



# LEDS

LED stands for **L**ight-**E**mitting **D**iode.

## Front view



### Power LED

The Power LED is positioned on the right side of the DCS-900W lens. Steady green confirms that the DCS-900W is powered **ON**.

#### Note:

There are three settings for the Power LED for monitoring purposes: Normal / Off / Dummy. *Please refer to the **DCS-900W Camera Configuration** section on P. 24 for detailed information and usage.*

### LAN LED

The LAN LED is positioned on the right side of the DCS-900W's lens. It is located below the Power LED.

Steady orange confirms a good connection to the LAN.

Depending on the data traffic, the LED will begin to flash to indicate that the DCS-900W is receiving/transceiving from/to the LAN network.



# Hardware Installation

## Attach the Antenna

Locate the antenna included with your DCS-900W and attach it to the antenna connector located on the back of the DCS-900W.



## Attach the Swivel Stand

Locate the stand mount on the bottom of the DCS-900W and screw on the swivel stand.



## Connect the Ethernet Cable

Connect the included Ethernet cable to the network cable connector located on the back panel of the DCS-900W and attach it to the network.



## Attach the External Power Supply

Attach the external power supply to the DC power input connector located on the rear panel of the DCS-900W and connect it to your local power supply.  
*Note:* Power source is confirmed when the green LED Power Indicator located to the right of the lens on the DCS-900W is illuminated.



Network Connectivity is confirmed when the orange LED Indicator on the DCS-900W located below the Power LED is illuminated.

# Security

To ensure the highest security and prevent unauthorized usage of the DCS-900W, the Administrator has the exclusive privilege to create all users. The DCS-900W supports multi-level password protection/access that can be restricted by the Administrator for defined users who have a **User Name** and **User Password**.

The Administrator can release a public **User Name** and **Password** so that when remote users access the DCS-900W they will be allowed to view the images transmitted by the DCS-900W.

## Note:

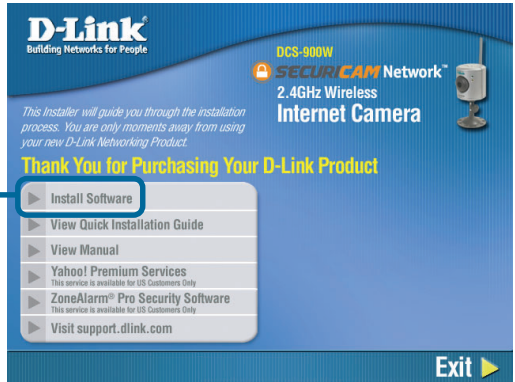
When the DCS-900W is used for the first time, it is highly recommended that the Administrator set the **Admin ID** and **Admin Password** to constrain user access to the DCS-900W since the Default settings are Null String (no password). Once the ID and Password are defined, only the Administrator has access to the management of the DCS-900W. This procedure should be done as soon as possible since the security features of the DCS-900W will not be enabled until the **Admin ID** and **Admin Password** is defined.

# Using the Setup Wizard

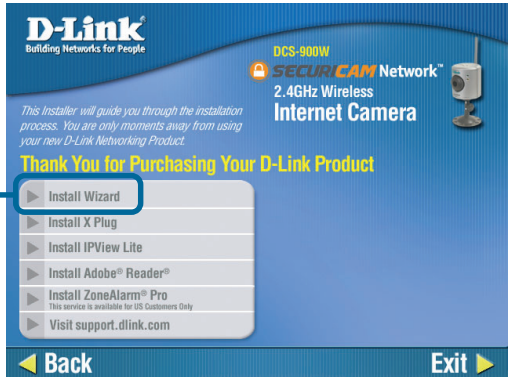
Follow the simple steps below to run the Setup Wizard to guide you quickly through the installation process.

Insert the **D-Link DCS-900W** CD into your CD-ROM drive.

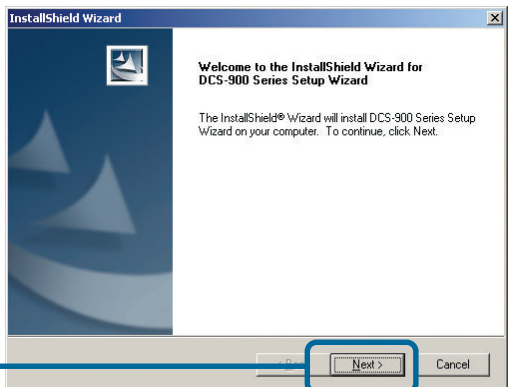
Click **Install Software**



Click **Install Wizard**

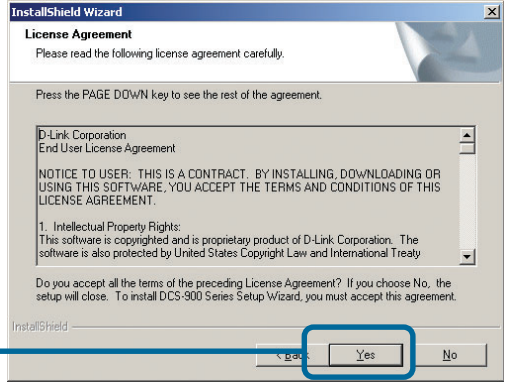


Click **Next**

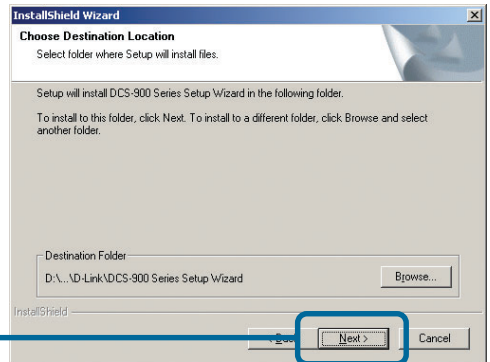


# Using the Setup Wizard (continued)

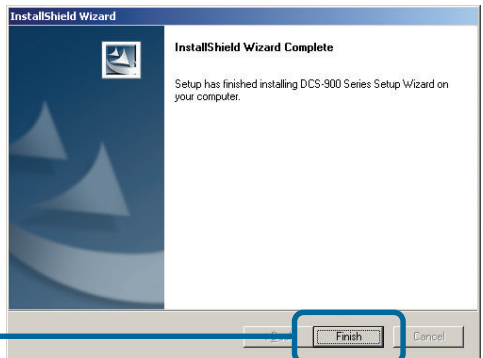
Click **Yes**



Click **Next**



Click **Finish**



# Using the Setup Wizard (continued)

To run the Setup Wizard, click on **Start->Programs->DCS-900W Series Setup Wizard**.

Your camera's IP Address will be displayed here if it is valid.

Click **Wizard** to begin

Mac Address	Name	IP Address	Assigned
0 03 18 10 23 B4		192.168.0.20	

You must change the **Admin ID** and **Password** immediately to protect your camera against unauthorized access. By default, the Admin ID and Password are blank. To change the Admin ID and Password, select both **Change** boxes and enter a **New ID** and **New Password**.

Click **Next**

Set up an **Admin ID** and **Password** to secure your camera. Click **Next** to continue.

Admin ID:  Password:

Change  Change

New ID:  New Password:

Reconfirm:  Reconfirm:

Back Next Exit

# Using the Setup Wizard *(continued)*

The **IP Address**, **Subnet Mask** of your camera, **Gateway**, and **DNS** addresses must correspond with your network settings for you to access the camera. If you are unsure of what these settings should be, please check with your network administrator.

**D-Link**  
Building Networks for People

## Setup Wizard

### Set IP Address

IP Address	<input type="text" value="192.168.0.20"/>
Subnet Mask	<input type="text" value="255.255.255.0"/>
Default Gateway	<input type="text" value="192.168.0.1"/>
DNS 1	<input type="text" value="192.152.81.1"/>
DNS 2	<input type="text" value="4.2.2.2"/>

Back Next Exit

Click **Next**

The Connection Mode depends on how your camera is connected to your network. Click Infrastructure for use with a router or Adhoc for a peer-to-peer connection. The Network Name, Wireless Channel, and Encryption Keys **MUST** correspond with your wireless network settings for the camera to work.

**D-Link**  
Building Networks for People

## Setup Wizard

### Wireless Interface

Connection Mode	<input checked="" type="radio"/> Infrastructure <input type="radio"/> Adhoc
Network Name (SSID)	<input type="text" value="default"/>
Wireless Channel	<input type="text" value="6"/>
Old Encryption WEP Key	<input type="text"/> <input checked="" type="radio"/> ASCII <input type="radio"/> HEX
<input type="checkbox"/> Change Encryption WEP Key	
New Encryption WEP Key	<input type="text"/>
Reconfirm WEP Key	<input type="text"/>

Back Next Exit

Click **Next**

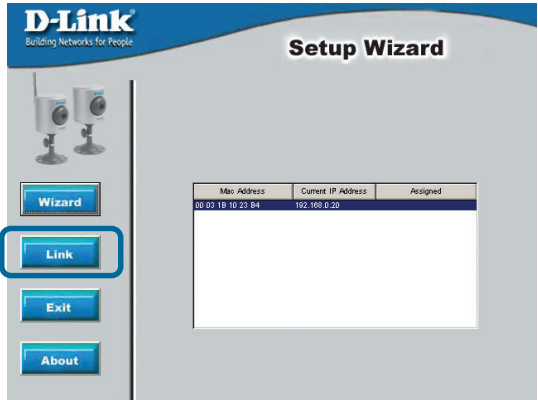
# Using the Setup Wizard (continued)

If you need to make any changes, click **Back** to modify your camera settings. Otherwise, click **Restart** to save and apply your settings.

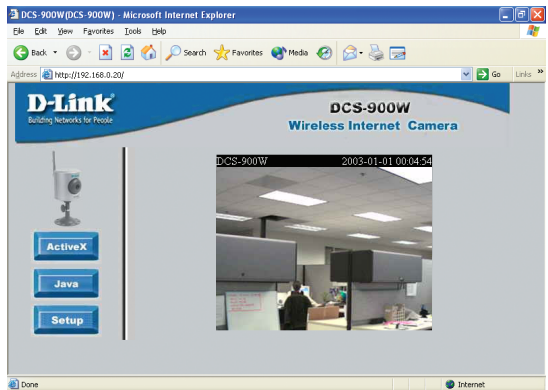


Your setup is now complete! Click **Link** to launch your Web browser and view your images.

Click **Link**



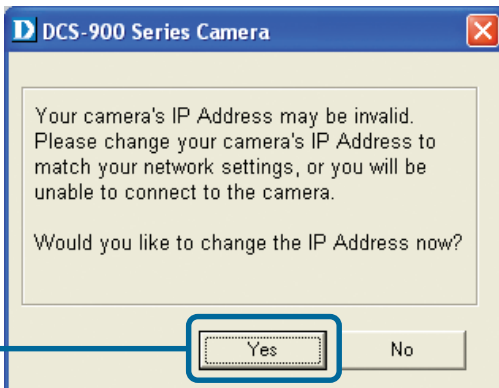
Your camera is now displayed in the Web browser.



# Using the Setup Wizard *(continued)*

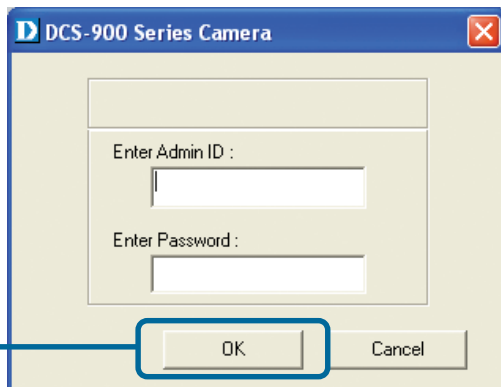
If you change any of the default settings in the Setup Wizard, the following screens may appear:

This screen appears if the default IP Address of the camera (192.168.0.20) does not correspond with your local area network settings. You must assign an IP address for your camera that corresponds to your network's IP addressing scheme.



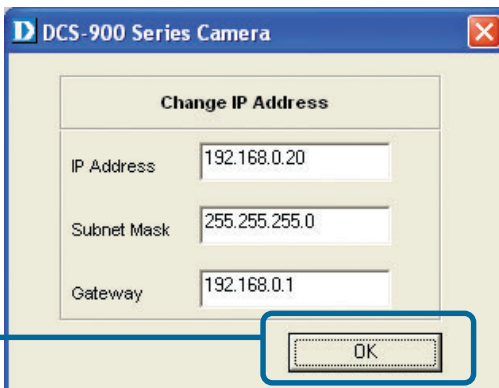
Click **Yes**

By default, the Admin ID and Password are blank. If you are running this Setup Wizard for the first time, leave both Admin ID and Password fields blank and simply click OK to continue. If you want to enter the Admin ID and Password, enter them and click OK to continue.



Click **OK**

The IP Address of your camera must correspond with your network settings for you to access the camera. If you are unsure of what these settings should be, please check with your network administrator.



Click **OK**

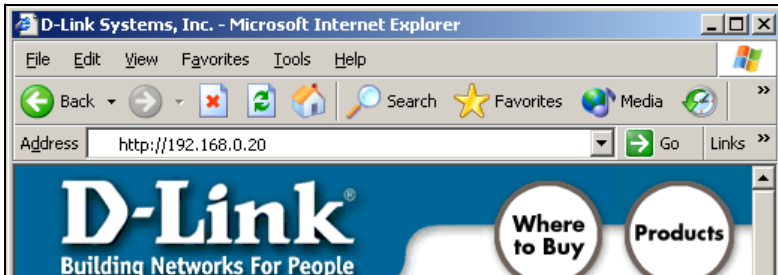


# DCS-900W Configuration

## Web Configuration

After completing the Setup Wizard, you are ready to use your camera. The Web configuration utility is designed to easily access and configure your DCS-900W.

If you would like to open the configuration page from a Web Browser, enter the IP address that you assigned to your DCS-900W.

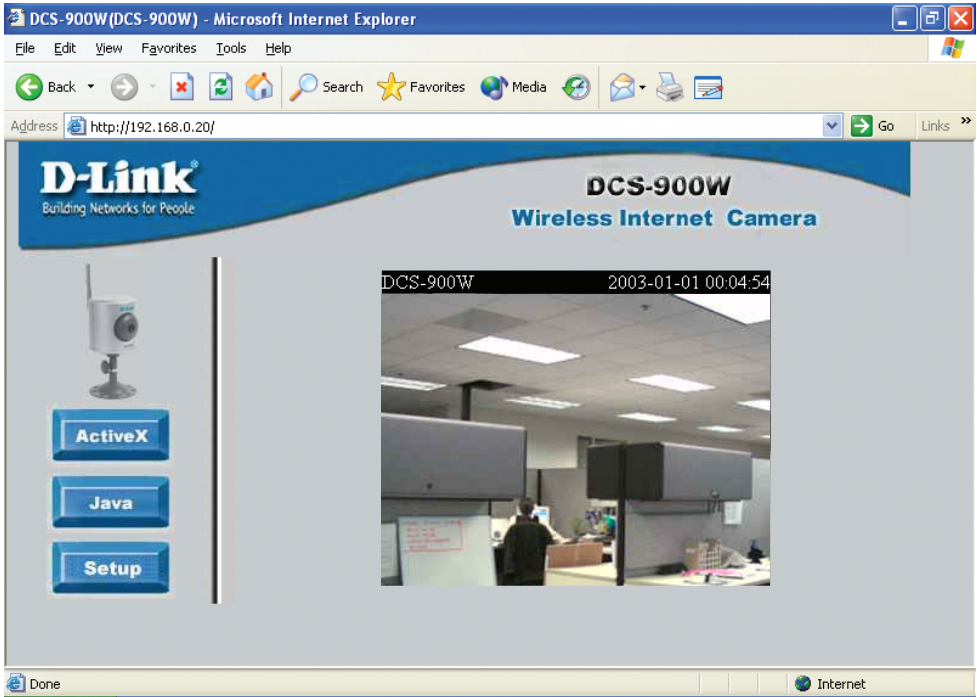


## Home Screen

After the camera's IP address is entered in the Browser, the DCS-900W Home screen will appear with a still image from your camera. There will be three options to choose from to set up and view your Internet Camera:

- ActiveX
- Java
- Setup

# DCS-900W Configuration *(continued)*



## Configuration

Click on **Setup** from the Home screen to access the settings required for the DCS-900W.

There will be several options in the Configuration page to choose from to setup your DCS-900W and they are as follows:

### **Advanced**

- System
- Video

### **Tools**

- Admin
- Time
- Default

### **Status**

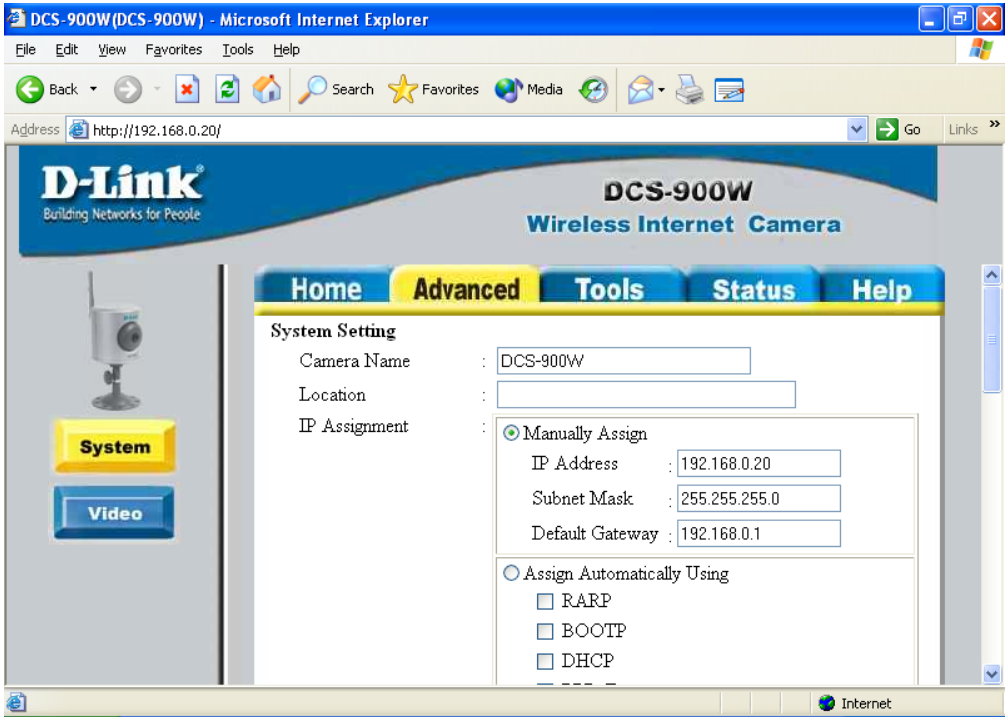
### **Help**

# DCS-900W Configuration *(continued)*

## Advanced > System

The System menu allows you to configure and set up your DCS-900W for operation. If you already set up your camera using the Setup Wizard, you may view/change your settings here.

To access the System menu, click on the **Advanced Tab** in the menu bar, then the **System** tab in the left hand bar and the **System** screen will appear as illustrated below:



# DCS-900W Configuration *(continued)*

## Advanced > System

### Camera Name:

This field is used for entering a descriptive name for the camera. The default setting for the Camera Name is DCS-900W. The maximum length is 32 characters (Printable ASCII).

### Location:

This field is used for entering a descriptive name for the location used by the DCS-900W.

### IP Assignment:

#### Important Information

Access to the Internet Camera is gained by assigning a proper IP Address. Please make sure to use a vacant IP address when you assign the IP Address for the Internet Camera. This will prevent IP Address conflicts.

There are two options to select from the IP Assignment, either **Manually Assign** or **Assign Automatically Using**.

### Manually Assign

You can click **Manually Assign** and directly enter a valid IP Address for your camera. Remember that your camera's IP Address must correspond to your network settings if you wish to change it here.

The default settings are as follows:

- Default IP – 192.168.0.20
- Subnet Mask – 255.255.255.0
- Default Gateway – 0.0.0.0

# DCS-900W Configuration *(continued)*

## Advanced > System

### Assign Automatically Using

#### Important

This options is recommended only for advanced users and network administrators since it may be difficult to determine the IP Address of the unit after the IP Address has been automatically assigned. It is recommended that an IP Address be assigned manually.

If your network is using **RARP**, **BOOTP**, or **DHCP Server** you can Click **Assign Automatically Using** and click on **RARP**, **BOOTP** or **DHCP**. Under this setting the DCS-900W will automatically assign an IP Address from the **RARP**, **BOOTP** or **DHCP Server**. Each time the DCS-900W starts up, be sure the **RARP**, **BOOTP** or **DHCP Server** is set up to assign an IP address to your DCS-900W.

If your application requires direct connection from an ADSL modem through the DCS-900W's RJ-45 LAN port and you also have an ISP PPPoE account, click on **PPPoE** and enter the **Service Name**, **User ID** and **Password** into the respective fields.

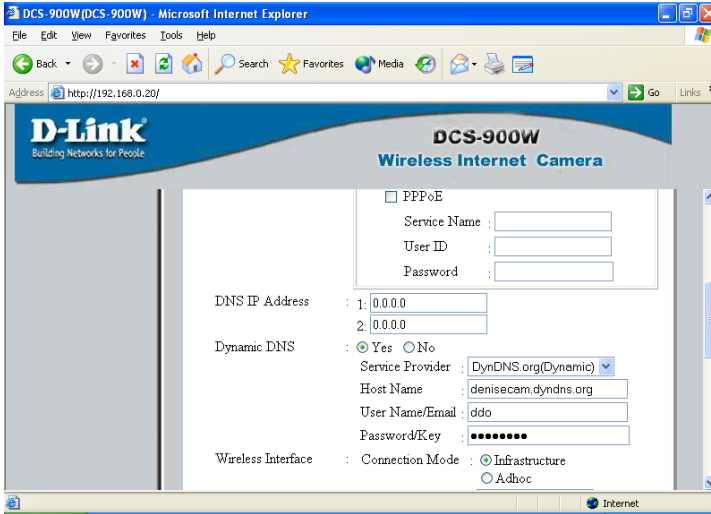
The DCS-900W will get an IP Address from the ISP each time it starts up.

# DCS-900W Configuration *(continued)*

## Advanced > System

### DNS IP Address:

DNS (Domain Name Service) is an Internet service that translates domain names (ie. www.dlink.com) into IP Addresses (ie. 192.168.0.20). The DNS IP Address can be obtained from your ISP.



### Dynamic DNS

The DCS-900W supports Dynamic DNS which means that you can obtain and assign an easy to remember static address for your camera like www.mycamera.com through a free service such as www.dyndns.org. This means that no matter how often your camera's IP changes, you will always be able to access your camera using your unique assigned name such as www.mycamera.myddns.com.

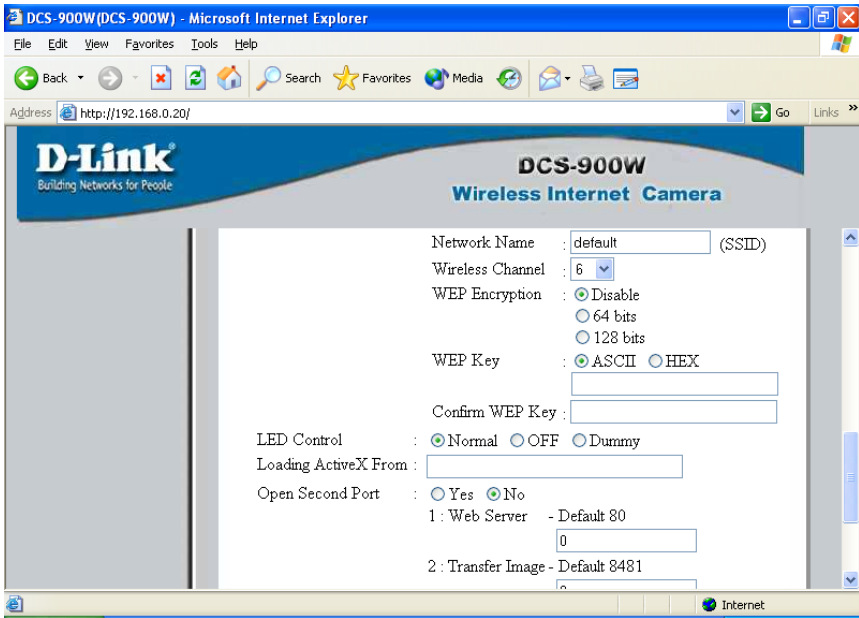
# DCS-900W Configuration *(continued)*

## Advanced > System

### Wireless Interface:

#### Connection Mode:

Use the Connection Mode to determine the type of wireless communication for the Internet Camera. There are three choices: **Infrastructure mode**, **802.11 Adhoc mode** and **Adhoc mode**. The default setting for the Connection Mode is Infrastructure.



To enable WEP Encryption, first decide which WEP key format will be applied. Click on the ASCII or HEX check box to select the type of format, then input the WEP key. To Confirm the WEP key you must enter the data once again in the Confirm WEP Key field.

#### ASCII input format

ASCII format interprets each character as an eight-bit value. All unaccented upper- and lower-case Western European characters that can be input through your keyboard's typing zone are valid. To set up a 64-bit WEP key, input 5 ASCII characters, for example, 'dlink'. To setup 128-bit WEP key, input 13 ASCII characters, for example, 'dlinkcamera10'. This results in bit counts of 40 and 104, respectively; the Internet Camera will automatically pad your input to a bit count of 64 or 128.

# DCS-900W Configuration *(continued)*

## Advanced > System

### HEX input format

HEX format interprets each pair of characters as an eight-bit value in hexadecimal (base 16) notation. Only the digits 0 through 9 and the letters A through F (in upper or lower case) are valid. To set up a 64-bit WEP key, input 10 numbers in HEX format, for example, '3132333435', this is the same with the ASCII input '12345'. To set up a 128-bit WEP key, input 26 numbers in HEX format, for example, '31323334353637383930313233', this is the same with the ASCII input '1234567890123'. This results in bit counts of 40 and 104, respectively; the Internet Camera will automatically pad your input to a bit count of 64 or 128.

In the Confirm WEP Key field, input the same characters that were inputted in the Encryption Code field.

Make sure the Encryption Code matches the Access Point's encryption code when the Internet Camera is connected in Infrastructure mode. Your PC/Notebook's encryption code also needs to match the encryption code used by the Internet Camera in either Infrastructure mode or Ad-hoc mode.

By default, an Encryption key is not assigned to the DCS-1000W. Therefore, to secure the wireless transmission be sure to enable the Encryption Key by entering the relevant data.

### Note:

Be sure to carefully input and document the Encryption Code; input errors will cause the communication link to fail.

### LED Control:

The LED control allows you to set up the LED illumination as desired. This feature provides flexibility when surveillance activity is **ON**. There are three options as follows:

- Normal
  - Power** -LED indicator is steady **ON**.
  - LAN**- When LAN activity is present, the LED indicator will flash steadily **ON**.
- OFF
  - Power** - LED indicator is off.
  - LAN** – LED indicator is off.
- Dummy
  - Power** - LED indicator is steady **ON**.
  - LAN** - LED indicator is **ON** with random flashing.



# DCS-900W Configuration *(continued)*

## Advanced > System

The default setting for the LED control is **Normal**. When you have configured the LED control the correct illumination will be applied after 1 minute.

**Note:** The three LED options allow the Administrator to customize the LEDs for discreet camera operation in surveillance scenarios. In Normal Mode, the LED indicator functions normally. Under Off Mode, the LED indicators are both **OFF** during active monitoring. In Dummy Mode, the LEDs are active and monitoring is either active or inactive.

### Loading ActiveX From:

This field is used to specify the location of Xplug Control (ActiveX) plug-in program. Enter the information as required in .ocx format, for example: <http://www.<your company>.com/xplug.ocx> where **<your company>** must be replaced with your company's DNS server.

Instructions for installing ActiveX from the driver CD is included in this manual. Please refer to the Appendix.

### Open Second Port:

The Open Second Port option is used when multiple cameras are being installed on a network OR if you need to use a port other than the default Port 80. If you are installing only one camera and wish to use the default ports, you do not have to open a second port on your camera. If you are installing a camera behind a router, you must also open a port on your router for remote viewing of your camera. For detailed instructions on how to do this, please refer to the next section of this manual on how to install the DCS-900W with a router. For each additional camera that is installed, you must select the Open Second Port option and assign the appropriate Web server and Transfer Image Ports for each camera to enable remote viewing.

For example, for a multiple camera installation, you can open the second port for each additional DCS-900W from Port 81 to Port 85 as follows:

Internet Camera 1 – IP 192.168.0.101, second Web Port 81  
Internet Camera 2 – IP 192.168.0.102, second Web Port 82  
Internet Camera 3 – IP 192.168.0.103, second Web Port 83  
Internet Camera 4 – IP 192.168.0.104, second Web Port 84  
Internet Camera 5 – IP 192.168.0.105, second Web Port 85

# DCS-900W Configuration *(continued)*

## Advanced > System

Note: If you are installing multiple DCS-900W and wish to use the default 192.168.0.20 address, remember to assign this address to the LAST camera that you plan to install to avoid conflict of IP Address.

**IMPORTANT:** You **MUST** also set up your router/gateway for Port Mapping--this will enable remote viewing of multiple cameras via the Internet. Please refer to your router's instruction manual on how to open up ports. For additional help on configuring your camera to work with your router, please refer to the next section on setting up your camera for use with a router.

### **Apply/Cancel:**

After making sure all your settings are correct, click on the **Apply** button to store the settings. You can alternatively click on the **Cancel** icon to restore all settings to the values last saved to or retrieved from the DCS-900W.

# **DCS-900W Configuration** *(continued)*

## **Installing the DCS-900W Behind a Router**

### **Single Camera Installation**

If you are installing a single camera on your network the installation is an easy 4–step procedure:

- 1) Identify Your Camera on the Network
- 2) Assign a Local IP Address for Your Camera
- 3) Determine Your Router’s WAN IP Address (Enable Remote Viewing)
- 4) Open Virtual Server Ports for Your Router (Enable Remote Viewing)

### **Multiple Camera Installation**

If you are installing multiple cameras on your network, the installation is an easy 5–step procedure:

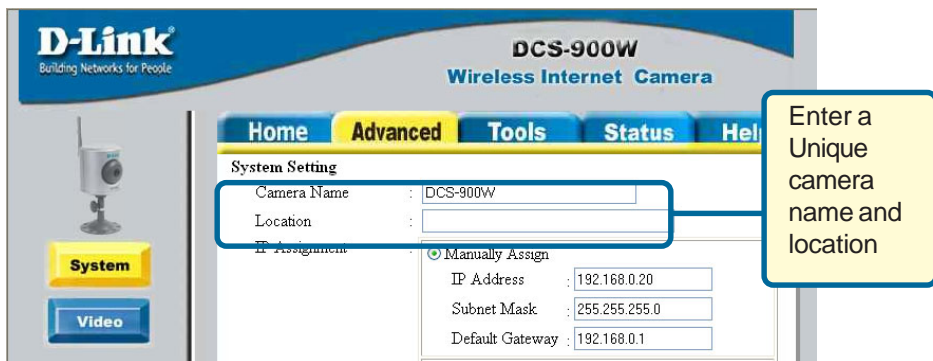
- 1) Identify Your Camera on the Network
- 2) Assign a Local IP Address for Your Camera
- 3) Open a Second Port on the Camera
- 4) Determine Your Router’s WAN IP Address (Enable Remote Viewing)
- 5) Open Virtual Server Ports for Your Router (Enable Remote Viewing)

# DCS-900W Configuration *(continued)*

## Installing the DCS-900W Behind a Router

### 1) Identify Your Camera on the Network

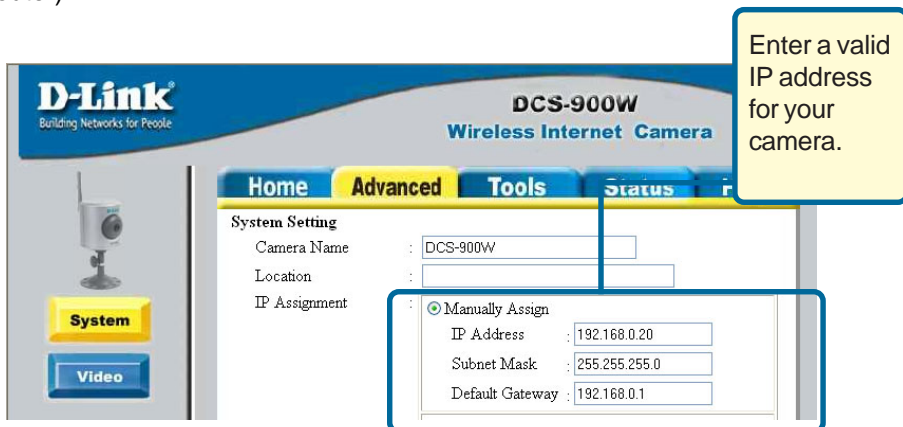
Once you are logged into the camera via a Web browser on your network PC, click on the **Advanced** Tab, and select **System**. Enter a unique **Camera Name** and **Location**. These settings are important if you are installing several cameras on your network.



### Identify Your Camera on Your Network

### 2) Assign a Local IP Address for Your Camera

A Local IP Address is required to configure your camera and to view your camera within your local (home) network. You may use the default camera IP Address of 192.168.0.20. If you wish to use a different IP Address, be sure that the camera settings correspond to your network settings. The Default Gateway will be the IP Address of your router's Local IP Address (i.e. 192.168.0.1 if you are using a D-Link router)



### Assign a Local IP Address

# DCS-900W Configuration *(continued)*

## Installing the DCS-900W Behind a Router

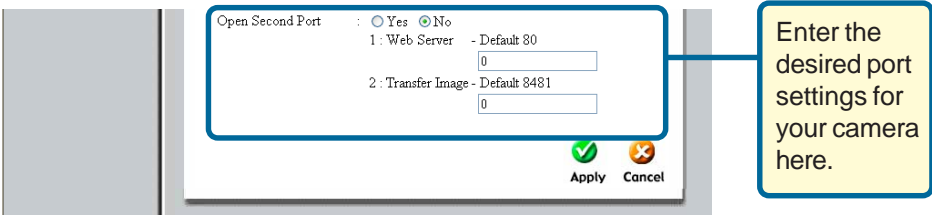
### Assigning and opening second port in the DCS-900W ( For Installing Multiple Cameras)

Opening ports will allow users to view the camera via the Internet. The ports that are opened must be unique for each camera in order to successfully view the images remotely.

#### 3) Open Second Port

The **Open Second Port** option is used when multiple cameras are being installed on a network OR for using a port other than the default port for image viewing. For each additional camera that is installed, you must select the Open Second Port Option and assign the appropriate Web server and Transfer Image ports for each camera to enable remote viewing.

By default, ports **80** (Web server port) is open. If these ports are available for use, you **DO NOT** have to open a second port and can proceed to the next section. If port 80 is *not* available (for example, if you are already using port 80 to run a Web server or your ISP blocks access on port 80\*) you **MUST** open a second port and designate a new Web server port (800, 801, 802,... etc) AND a new image transfer port (8482, 8483,... etc). **IMPORTANT:** Be sure to take note of these settings since these same settings will be used to configure your router.



#### Open a Second Port for Your Camera

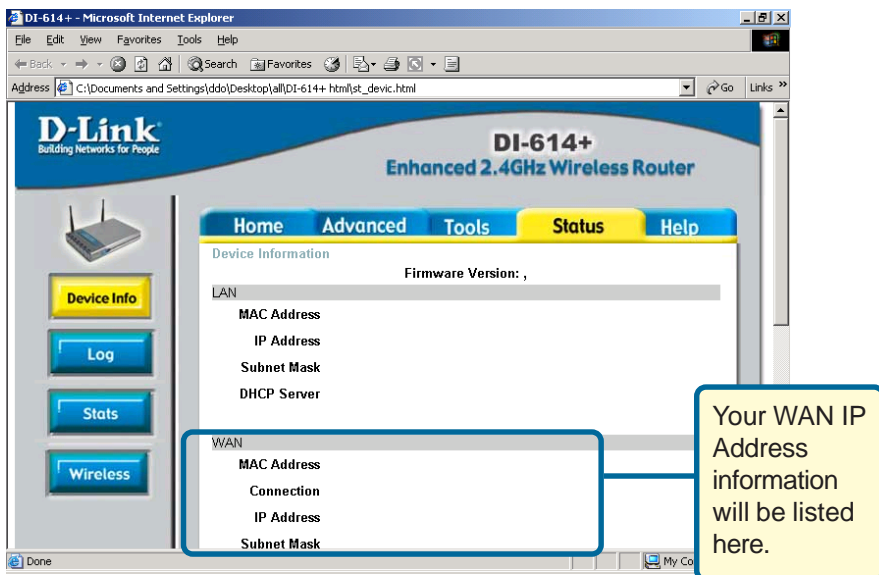
**\*IMPORTANT NOTE:** Some ISPs block traffic on commonly used ports like port 80 to conserve bandwidth. Be sure to check with your ISP so that you can open the appropriate ports accordingly. If your ISP does not pass traffic on port 80, you will need to change the Web server port the camera uses from 80 to something else, like 800. If you are behind a residential gateway, you will need to open the corresponding port on your gateway as well. Not all gateways are the same, please refer to your gateway's user's manual for specific instructions on how to forward ports.

# DCS-900W Configuration *(continued)*

## Installing the DCS-900W Behind a Router

### ROUTER SET-UP AND INSTALLATION

The following steps generally apply to any router that you have on your network. The D-Link DI-614+ is used as an example to clarify the configuration process.



#### Determine Your Router's WAN IP Address

Note: Because a dynamic WAN IP address can change from time to time depending on your ISP, you may want to obtain a Static IP address from your ISP. A Static IP address is a fixed IP address that will not change over time and will be more convenient for you to use to access your camera from a remote location. You can use DDNS to obtain an IP address, please refer to P.22 for more information.

# DCS-900W Configuration *(continued)*

## Installing the DCS-900W Behind a Router

### ASSIGNING AND OPENING VIRTUAL SERVER PORTS

#### 5) Open Virtual Server Ports To Enable Remote Image Viewing

The Virtual Server Ports of your router must be opened for remote access to your camera. This is also referred to as port forwarding. Please proceed as follows:

- Select **Enabled** to enable virtual server settings.
- Select a camera name.
- Enter your camera's Local IP Address in the **Private IP** field.
- Select **TCP** under **Protocol Type**.
- If you are using the default camera port settings, enter 80 in to the **Public** and **Private Port** section\*.
- **Schedule** should be set to **Always** so that the camera images can be accessed at any time.
- In the **Virtual Servers List**, a check mark appearing before the camera name will indicate that the ports are enabled.
- Click **Apply** to save your settings. Note: If you are installing multiple cameras, be sure to open a port per additional camera installed: port 81, 82, etc. for web server.

Virtual Server

Virtual Server is used to allow Internet users access to LAN services.

Enabled  Disabled

Name:

Private IP:

Protocol Type:

Private Port:

Public Port:

Schedule:  Always

From time  :  AM to  :  AM

day  to

Name	Private IP	Protocol	Schedule	
Local Security Camera 1	192.168.0.35	TCP 84/84	always	<input checked="" type="checkbox"/>
Local Security Camera 1	192.168.0.35	TCP 8485/8485	always	<input checked="" type="checkbox"/>
Local Security Camera 2	192.168.0.30	TCP 83/83	always	<input checked="" type="checkbox"/>
Local Security Camera 2	192.168.0.30	TCP 8484/8484	always	<input checked="" type="checkbox"/>

#### Opening Virtual Server Ports on Your Router

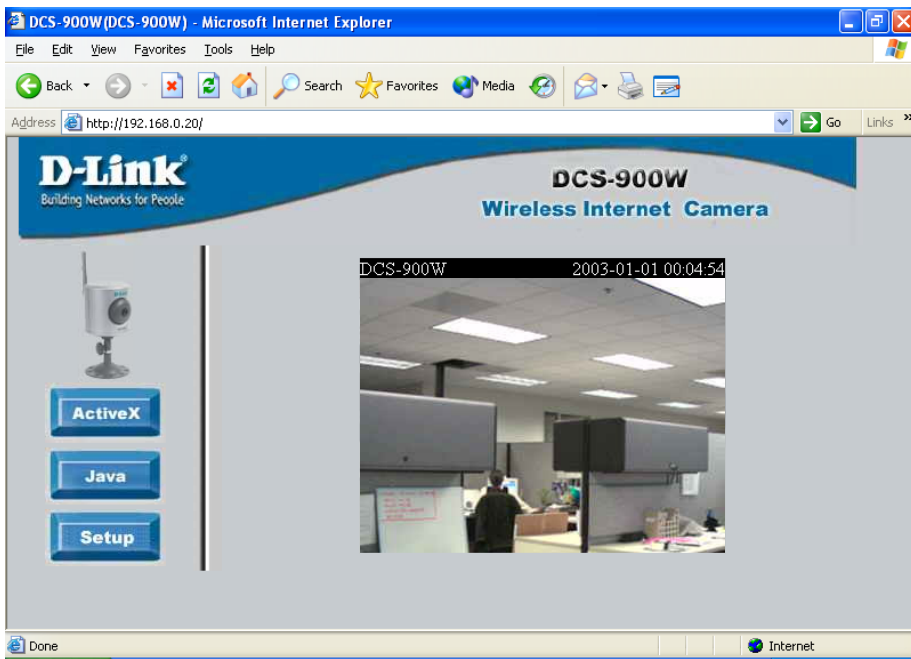
# DCS-900W Configuration *(continued)*

## Installing the DCS-900W Behind a Router

\*IMPORTANT NOTE: Some ISPs may block access to port 80. Be sure to check with your ISP so that you can open the appropriate ports accordingly. Some ISPs block traffic on commonly used ports to conserve bandwidth. If your ISP does not pass traffic on port 80, you will need to change the service port the camera uses from 80 to something else, like 800. If you are behind a residential gateway, you will need to open the corresponding port on your gateway as well. Not all Gateways are the same, so refer to your user’s manual for specific instructions on how to forward ports.

### Viewing Your Camera

After all settings have been entered correctly, a user inside or outside your network will have access to the camera through a standard Web browser. To access from the Internet, simply type in the IP Address of the **router** given to you by your ISP, a colon, and the port number that you gave your camera. (Ex. <http://205.163.122.96:83>). To access from a computer on your local (home) network, simply enter the local IP Address of your camera (i.e. 192.168.0.20). If using a port other than port 80, you must enter the IP address followed by a colon and the assigned port number.

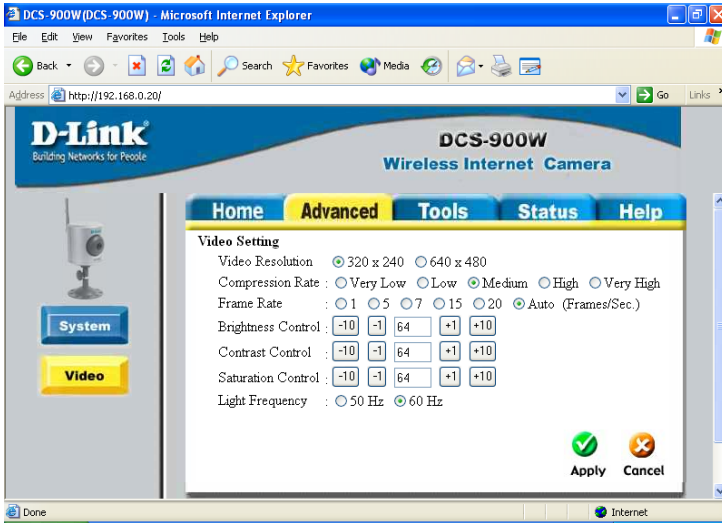




# DCS-900W Configuration *(continued)*

## Advanced > Video

The Video menu allows you to control and adjust the image settings for your DCS-900W. Click on **Video** on the left hand panel and the Image screen will appear as shown in the following illustration:



### Video Resolution:

Select the desired video resolution format: 320x240 (default) or 640x480.

### Compression Rate:

Select the desired compression rate ranging from very low to very high. Higher video compression rates will generate more compact file sizes with less video quality, and lower video compression will result in larger files with higher video quality. The default setting is **Medium**.

### Frame Rate:

Select the frame rate desired. Use the default setting of **Auto** for optimal results.

### Brightness Control:

Allows you to adjust the brightness level. The default setting is **64**.

### Contrast Control:

Allows you to adjust the contrast level. The default setting is **64**.

### Hue Control:

Allows you to adjust the hue level. The default setting is **64**.

# DCS-900W Configuration *(continued)*

## Advanced > Video

### Light Frequency:

Adjust the light frequency to suit your area of operation. 50 Hz and 60 Hz variants are available to accommodate the different light frequencies found in USA (60 Hz) and Europe (50 Hz) for optimal image quality.

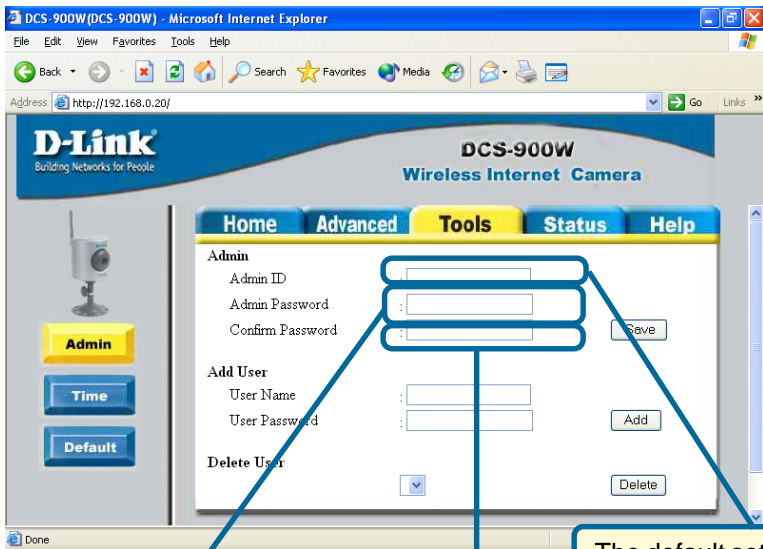
### Apply/Cancel:

After making sure all your settings are correct, click on **Apply** to store the settings. You can alternatively click on **Cancel** to restore all settings to the values last saved to or retrieved from the DCS-900W.

## Tools > Admin

The **Tools->Admin** menu allows the system administrator to assign users permission to monitor the DCS-900W from a remote site.

Click on **Tools**, then **Admin** in the left hand panel to access the Admin menu.



Enter the **Admin Password** with a maximum length of 8 (Printable ASCII) characters.

To confirm the **Admin Password**, type in your password again.

The default setting for **Admin ID** is blank (Null String). You need to key in the **Admin ID** with a maximum length of 12 (Printable ASCII) characters.

# DCS-900W Configuration *(continued)*

## Tools > Admin

### Add User

#### User Name:

Enter the user name in this field. A maximum of 8 user names are allowed, however each user name must be different. Each user name can be used as a group. For example, if the Username is **Guest** and the User Password is **Guest**, anyone can access the DCS-900W using this information. The maximum length for the User Name is 12 characters (Printable ASCII).

#### User Password:

Enter the user's password you want to assign to the specific Username. The maximum password length is 8 characters (Printable ASCII).

To add a new Username, input the necessary information first and click on **Add**.

**Delete User:** Select the user you wish to delete from the pull down menu and click on the **delete** icon.

### Important Information

Once the administrator has added users for the DCS-900W, users will be required to enter a login password to access the video image from the DCS-900W. The password dialog box is illustrated below.

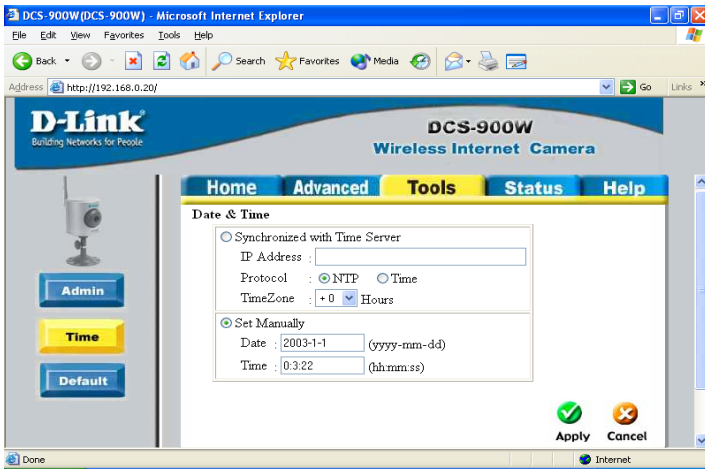


# DCS-900W Configuration (continued)

## Tools > Time

The **Time** menu sets the DCS-900W's time and date requirements to provide correct information to users who are accessing from a remote site. The two options in the **Time** settings are *Synchronized with Time Server* or *Set Manually*.

Click on **Time** in the left hand panel and this screen will appear as illustrated below:



### DateTime:

Select **Synchronized with Time Server** and the time will be based on the GMT setting. This is the default setting for the DCS-900W. Using a time server with your camera is recommended for time/date accuracy for your recorded video images and is critical for surveillance applications. Public time servers are available on the web. You must choose the appropriate time server matching your region of operation.

The NTP server IP address listed below will set the time server.  
<http://192.6.38.127>

NTP protocol is used primarily by Windows and Mac users. Time Protocol is used by Linux users.

### IP Address:

Enter the IP Address of the *Time Server* in this field. The IP address will be listed with the time server information on the web.

# DCS-900W Configuration *(continued)*

## Tools > Time

### Protocol:

Two options are available for linking with the *Time Server*. The default setting is **NTP**. Select the time for the Linux time server.

### TimeZone:

The System administrator must select the time zone for the region. *Please refer to the Appendix for the time zone selection table.*

To set the **Time** manually select **Set Manually**. The system administrator must then enter the Date and Time in the respective field manually. When **Set Manually** is selected, each time the DCS-900W is powered off, the time must be reset manually at reboot.

### Apply/Cancel:

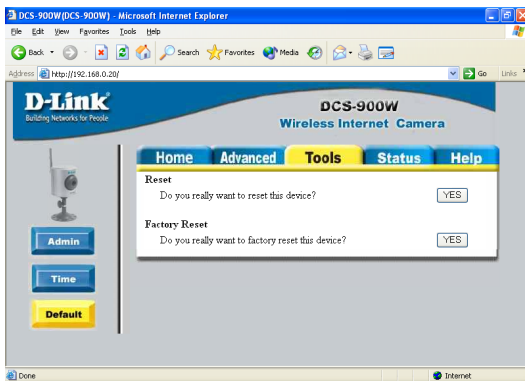
After making sure all settings are correct, click on the **Apply** icon to store the settings in the DCS-900W. You can alternatively click on the **Cancel** icon if you do not wish to make changes to the DCS-900W.

# DCS-900W Configuration *(continued)*

## Tools > Default


The **Default** tab contains commands for restarting the DCS-900W.

Click on **Tools**, then the **Default** tab in the left hand panel and the **Tools** screen will appear as illustrated below



### Factory Reset:

A factory reset restarts the DCS-900W and returns all settings to their default values. The Factory Reset will prompt you with a “Do you really want to factory reset this device?” message and a YES button. If you do not want to carry out a factory reset command, exit the panel without clicking YES, otherwise click on the “**YES**” icon and factory reset will be initiated.

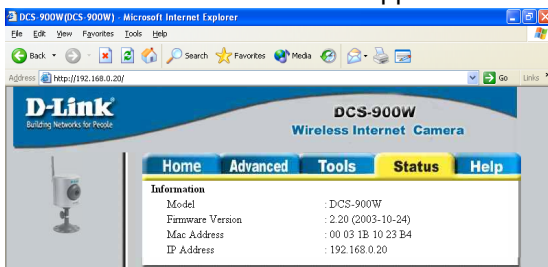


**Warning**  
All settings must be reconfigured after a Factory Reset!

## Status

The **Status** menu displays information about your DCS-900W.

Click on **Status** and the Information screen will appear as illustrated below:



The Information table provides detailed information about the DCS-900W such as the Model Name, Firmware Version, Mac Address, and IP Address.

# DCS-900W Configuration *(continued)*

## Status

### Completing Your Camera Configuration

Once the configuration is completed, click on **Home** to return to the Home screen and select the desired Viewing Image using either ActiveX Mode or Java Mode as described in the next section.

The last step is to position the DCS-900W and adjust the focus, by manually turning the lens clockwise or counter-clockwise to the desired image quality.

## ActiveX

To view video images from the browser, click on **ActiveX** in the **Home** screen, and the following screen appears below:

**Camera Name** - The Camera name will be displayed in the top bar located above the camera image when the Camera Name field is entered in the Web Configuration setting under **Advanced > System**.

**Location**- The location of the DCS-900W will be displayed when the Location field is changed in the Web Configuration settings under **Advanced > System**.

**Date/Time** - The date/time of the DCS-900W will be displayed according to your time server settings or from settings you have made manually.

### Note:

*Please refer to the Appendix for instructions on how to install ActiveX.*

# DCS-900W Configuration *(continued)*

## Java

Click on **Java** from the Home screen to access the video images from the Internet Explorer or Netscape browser as illustrated below:

**Camera Name** - The Camera name will be displayed when the Camera Name field is changed in the Web Configuration setting under **Advanced > System**.

**Location** - The location of the DCS-900W will be displayed when the Location field is changed in the Web Configuration settings under **Advanced > System**.

**Date/Time** - The date/time of the DCS-900W will be displayed according to your time server settings or from your manual settings.



# IPView Lite Application Installation

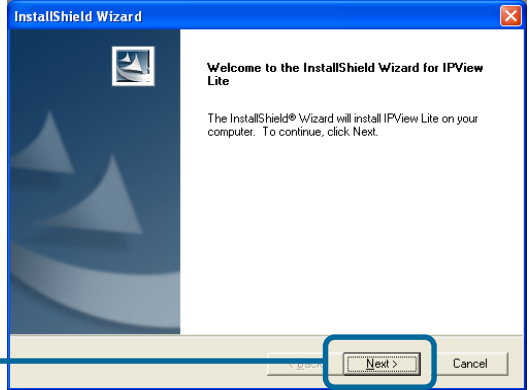
IPView Lite software is included for administrators to manage up to 4 **DCS-900Ws** remotely, record to hard drive, and configure advanced settings for the DCS-900W. IPView Lite is a complete software management tool for the DCS-900W and includes all configurable settings available in the web configuration utility.

Insert the CD-ROM into the CD-ROM drive. A menu screen will appear as shown below.

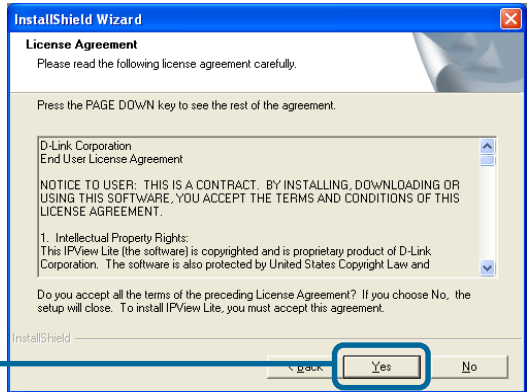


# IPView Lite Application Installation (continued)

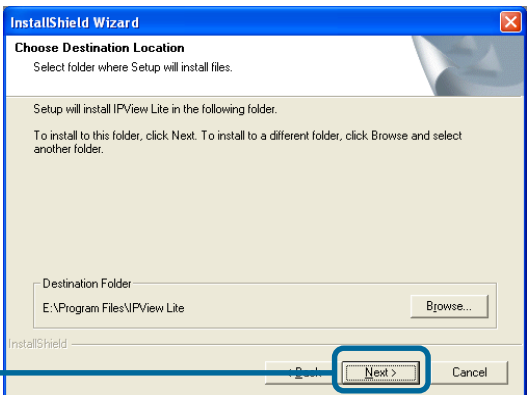
Click **Next**



Click **Yes**

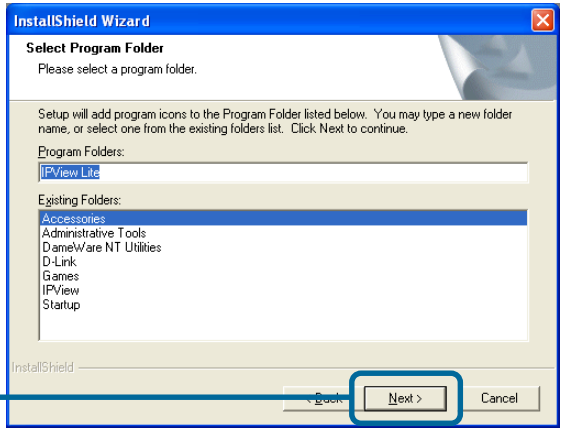


Click **Next**



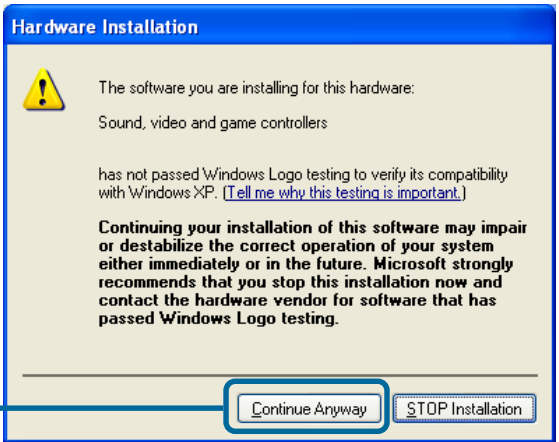
# IPView Lite Application Installation (continued)

Click **Next**



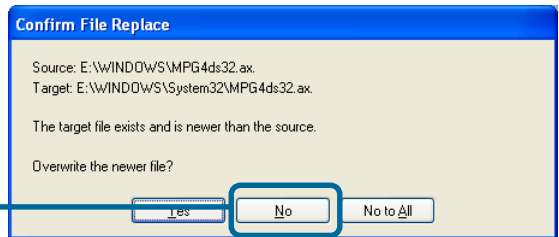
If your sound card or video card has not passed Windows Logo testing, this window will appear.

Click **Continue Anyway**

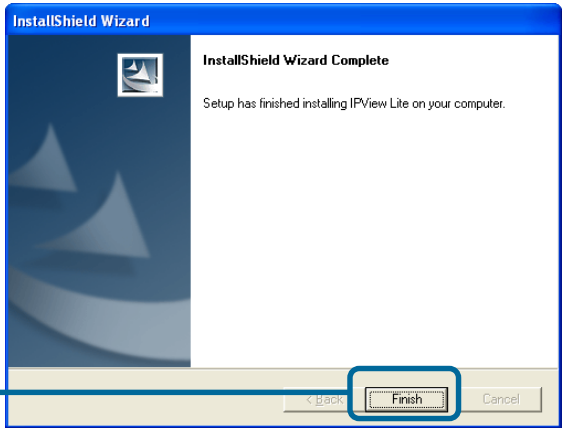


If there are previously installed target files that are newer than the source files, do NOT overwrite them.

Click **No**



# IPView Lite Application Installation *(continued)*

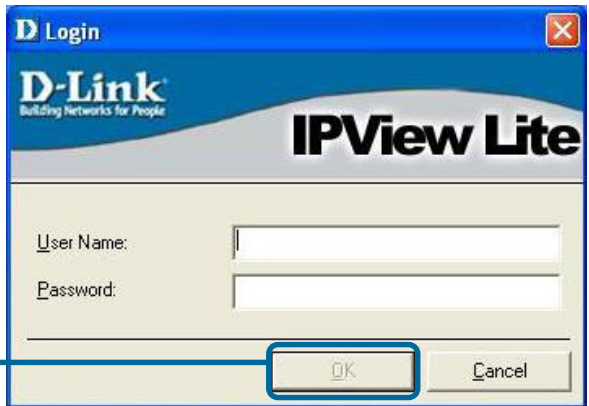


Click **Finish**

After successfully installing the IPView Lite, the application program for the DCS-900W is automatically installed to \Programs\IPViewLite Directory.

To start running the IPView Lite click on windows **Start > Programs > IPViewLite > IPViewLite**.

Enter the default User Name: **admin** into the respective field and click on **OK** to log into the application.



Click **OK**



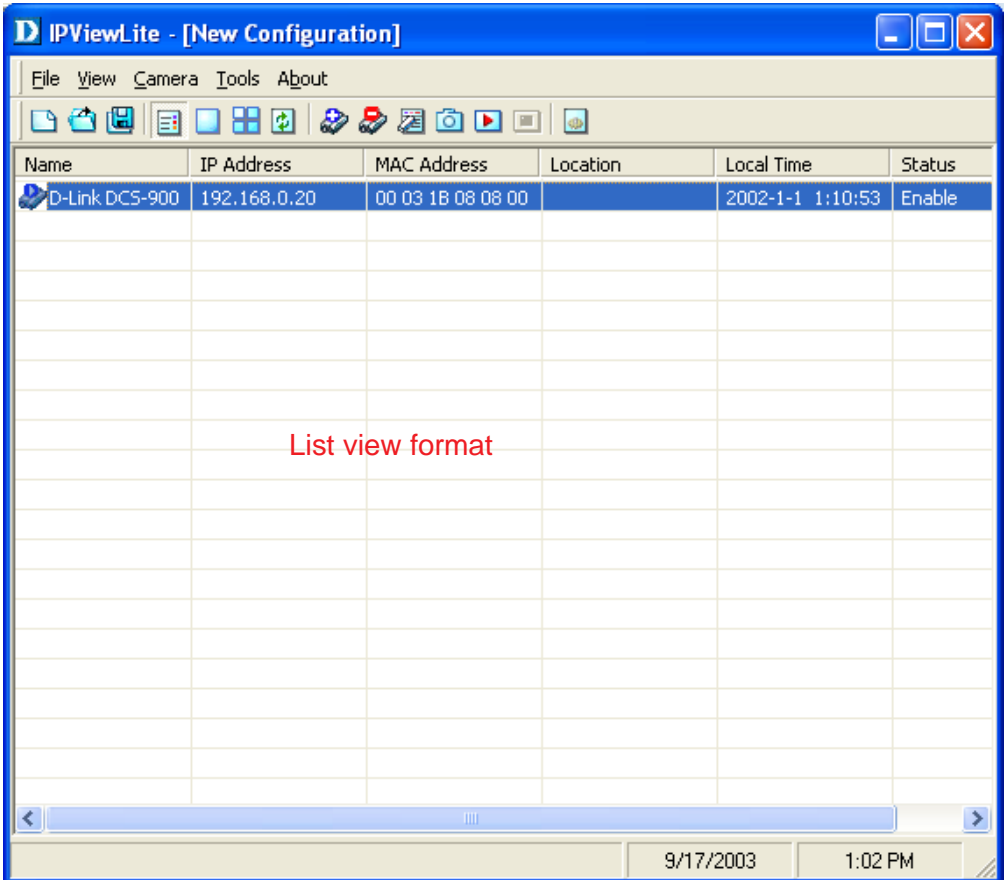
# IPView Lite

This section describes the operation of the IPView Lite application User Interface with detailed procedures for using the application.

## IPView Lite

IPView Lite allows you to manage your cameras by enabling you to search, configure and preview all the DCS-900Ws from one location.

It is designed with a user-friendly interface for ease of control and navigation.

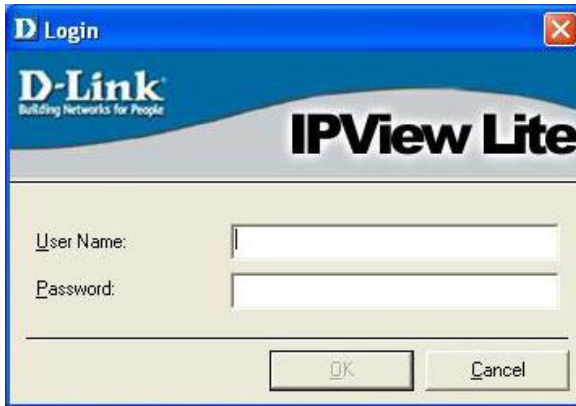


# IPView Lite *(continued)*

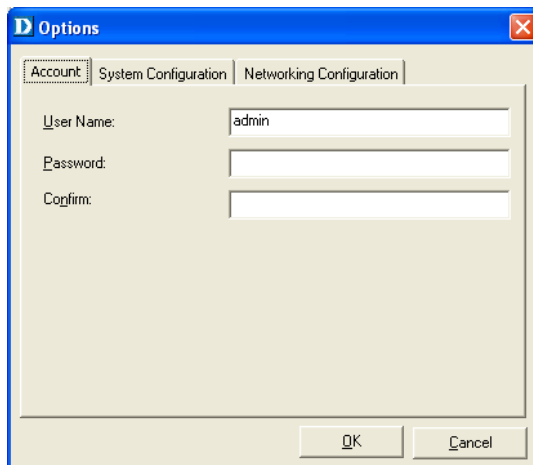
## How to Change the Password

### Change Password

When IPView Lite is used for the first time, it is highly recommended that the Administrator change the **User Name** and **Password** for security purposes. Once the **User Name** and **Password** are defined, only the Administrator has access to the management of IPView Lite applications. This procedure should be done as soon as possible to prevent unauthorized usage of the IPView Lite application.



To change the administrator **User Name** and **Password**, select **Tools > Options**. The **Options** dialog box will appear (see below).



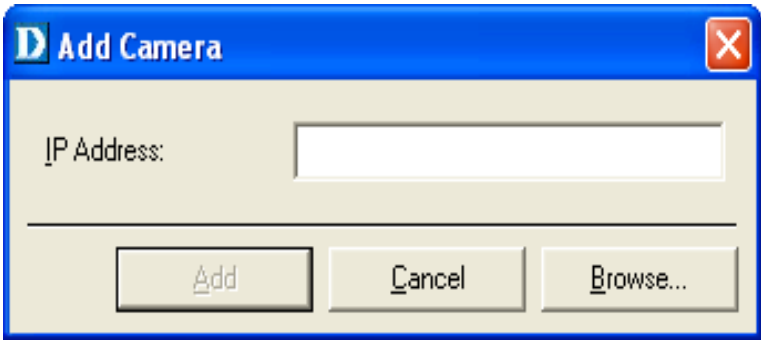
Enter a **User Name** and enter the **Password** twice. Once all the new details are entered click **OK**.

# IPView Lite *(continued)*

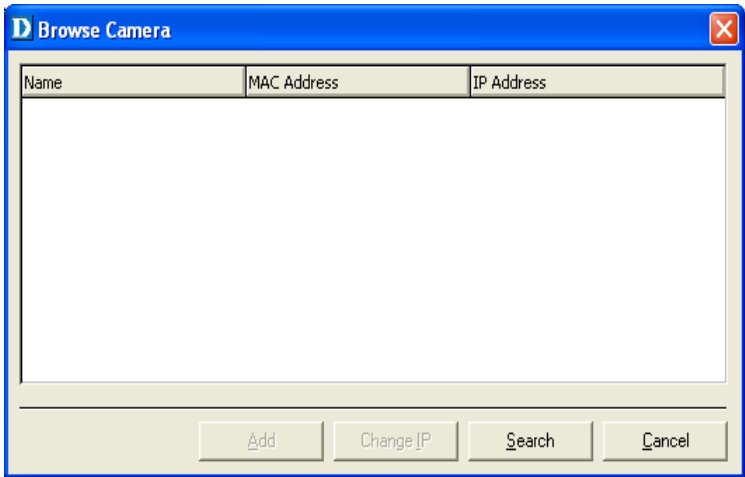
## How to Change the IP Address

### Changing the IP Address

To change an IP Address for a camera, select **Camera > Add**. An **Add Camera** dialog box will appear (see below).



Click on **Browse**. The **Browse Camera** dialog box will appear with a blank screen (see below).

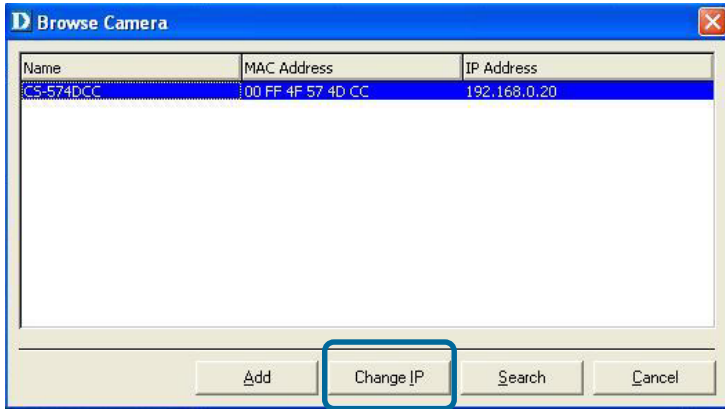




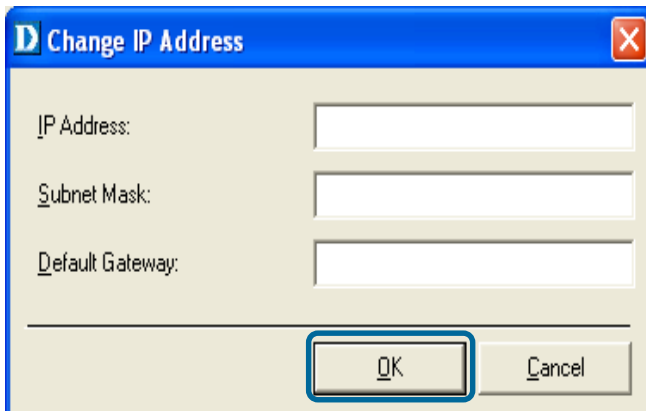
# IPView Lite *(continued)*

## How to Change the IP Address

Click **Search**. IPView Lite will detect and search all the available cameras that are installed on the local area network (example below.)



Highlight the camera you wish to change and click **Change IP**. If you have already changed the administrator user ID and password, you will be prompted to enter your admin ID and password before IPView Lite will allow you to change the IP Address for the DCS-900W.

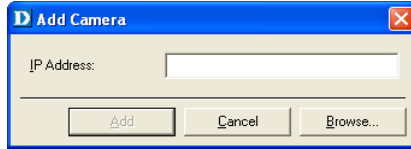


Enter the new **IP Address**, the **Subnet Mask** and the **Default gateway** into the respective fields and click **OK**. IPView Lite will apply the new IP Address to the camera.

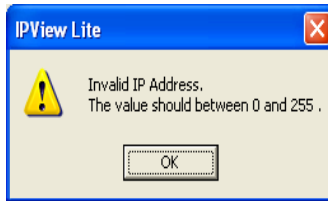
# IPView Lite (continued)

## How to Add a Camera

To add a new camera select **Camera > Add** from the IPView Lite. An **Add Camera** dialog box will appear. (See below.)

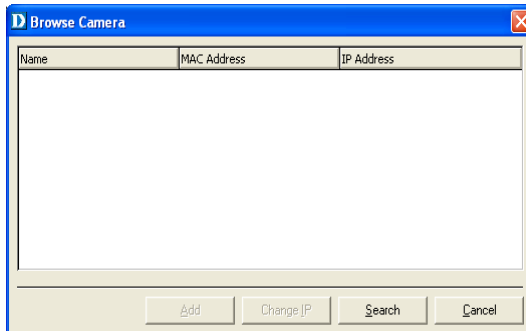


Enter the IP Address of the camera in the specified field and click **Add**. If the IP Address is entered incorrectly or if you have a bad network connection, a dialog box will appear to notify you of the error. To add cameras in IPView Lite, check that you have your network configured correctly. To add a remote camera, you need to have Internet access.



If you are unsure of the IP Address of the camera, you can click on **Browse to search for cameras on your local area network**. The **Browse Camera** dialog box will appear with a blank screen. (See below.)

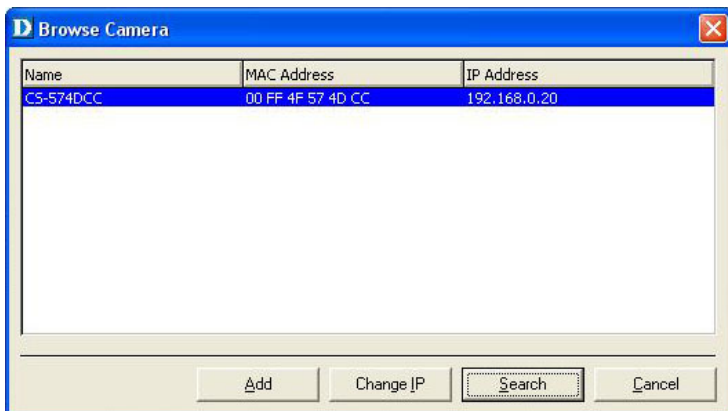
**Note:** *Only cameras on your local area network can be located using Browse in IPView Lite. If you want to add a camera via the Internet, you must enter in a physical IP Address. Remember that if your camera is behind a router, you will need to enter your router's WAN IP followed by a colon, then the port number that is assigned to your camera, i.e. 10.10.10.80:800, where 10.10.10.80 is your router's WAN IP and :800 is the port that your camera is using. Please refer to the DCS-900W Configuration, Installation Behind a Router section of this manual for details on P.27.*



# IPView Lite *(continued)*

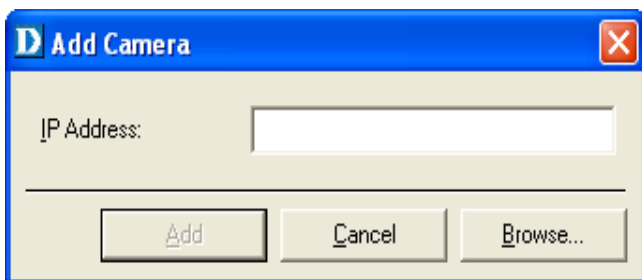
## How to Add a Camera

Click on **Search**. IPView Lite will detect and search for all the available cameras that are installed on the local area network.



Highlight the camera you wish to add and click on **Add**. The **Add Camera** dialog box will appear once again with the IP Address entered. Click on **Add**. The camera will automatically be added into the IPView Lite list view.

Alternatively, you can double-click on the camera you wish to add and the **Add Camera** dialog box will appear once again with the IP Address entered. Click on **Add**, and the camera will automatically be added into the IPView Lite list view.



# IPView Lite- Getting Started *(continued)*

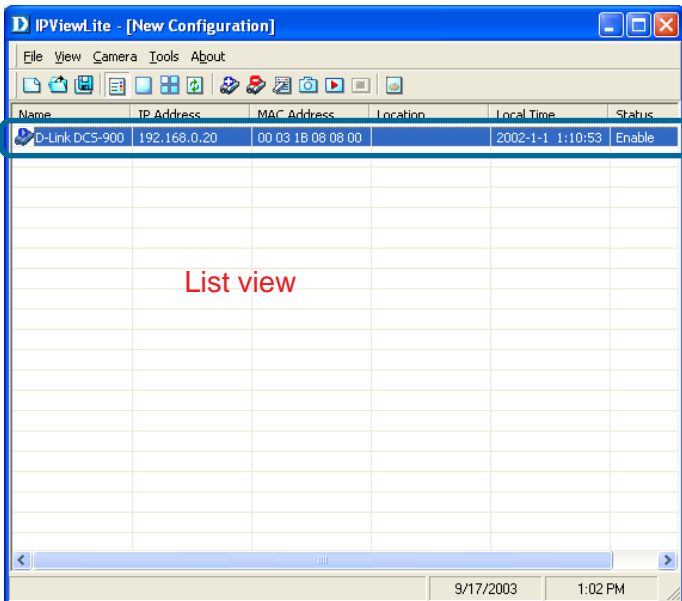
## How to Add/Delete a Camera

If the **Login Camera** dialog box appears, make sure to enter the correct **Username** and **Password**. Click **OK**. The camera will be added into IPView Lite, in list format. If the **Username** and **Password** are entered incorrectly, the camera will not be added into IPView Lite.

The Login Camera dialog box will appear only if you have already set the **Username** and **Password** during the Web Configuration setting.

## How to Delete a Camera

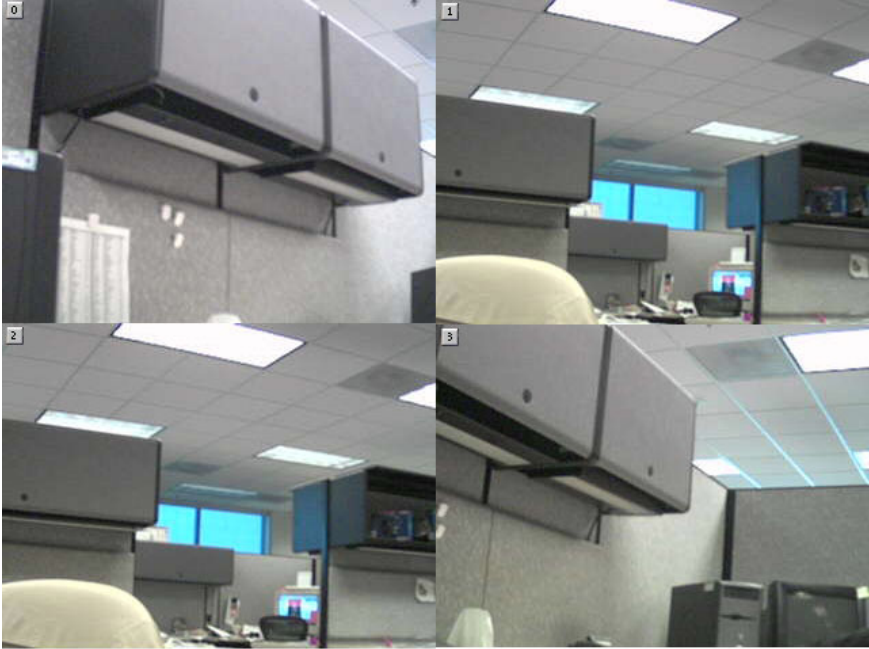
To delete a camera you must highlight the camera you wish to delete from IPView Lite list view format. From the menu bar select **Camera > Delete**. A **Delete Camera** dialog box will appear. Click **Yes** to delete the camera, or click **No** if you do not wish to delete the camera.



# IPView Lite *(continued)*

## How to Format the Camera view

From the menu bar select **View > 4 Cameras**. (See below.)



The icon on the upper left corner of the screen will appear with the camera number that is being displayed.

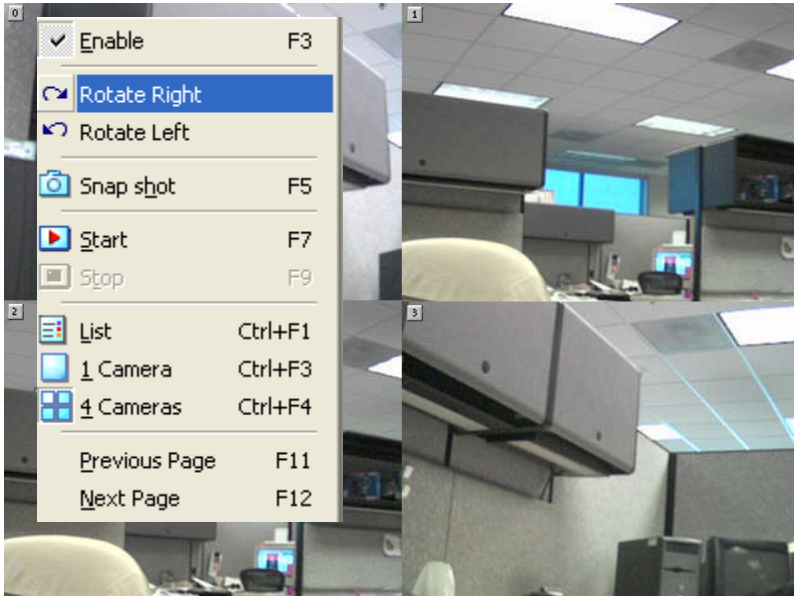
To return to the IPView Lite list view, right-click on the icon located on the upper left corner of the screen and a case sensitive menu will appear. Select **List** and the viewing image will return to the list view format.

A maximum of 4 cameras can be viewed simultaneously with IPView Lite.

# IPView Lite *(continued)*

## How to Rotate the Video view

In **View Mode** format, click on the icon located on the upper left corner of the screen and a pop-up menu will appear.



Once you click **Rotate Right** or **Rotate Left** in the menu, the video will rotate 90 degrees to the right or left.

## How to take a Snap-Shot with the Camera

To take a snap shot with the camera, you must highlight the camera you wish to use from the **IPView** Lite list view format. From the menu bar select **Camera > Snap** shot. A **Save Image** dialog box will appear for you to save the snap shot picture.

Alternatively, select from the viewing mode either 1 or 4 cameras. Click on the icon located on the upper left corner of the screen. A case sensitive menu will appear. Select the **Snap shot** icon. A **Save Image** dialog box will appear for you to save the snap shot picture.

# IPView Lite *(continued)*

## How to Start Recording

To start recording with a camera you must highlight the camera you want to use from the list view format. From the menu bar select **Camera > Start**. An AVI file will appear in your IPView Lite folder to save the recorded videos.

Alternatively, in the viewing mode (using either 1 or 4 cameras), right-click on the icon located on the upper left corner of the screen. A case sensitive menu will appear. Select the **Start** icon. An AVI file will appear in your IPView Lite folder to save the recorded videos.

**Note :**

***You must stop recording before changing any camera settings.***

## How to Stop Recording

To stop recording with a camera, you must highlight the camera you wish to stop from the list view format. From the menu bar select **Camera > Stop**. The recording function will be stopped.

The other alternative is to right-click the icon located on the upper left corner of the screen under the viewing mode of either 1 or 4 cameras; a case-sensitive menu will appear. Select **Stop**. The recording task will be stopped.

# IPView Lite (continued)

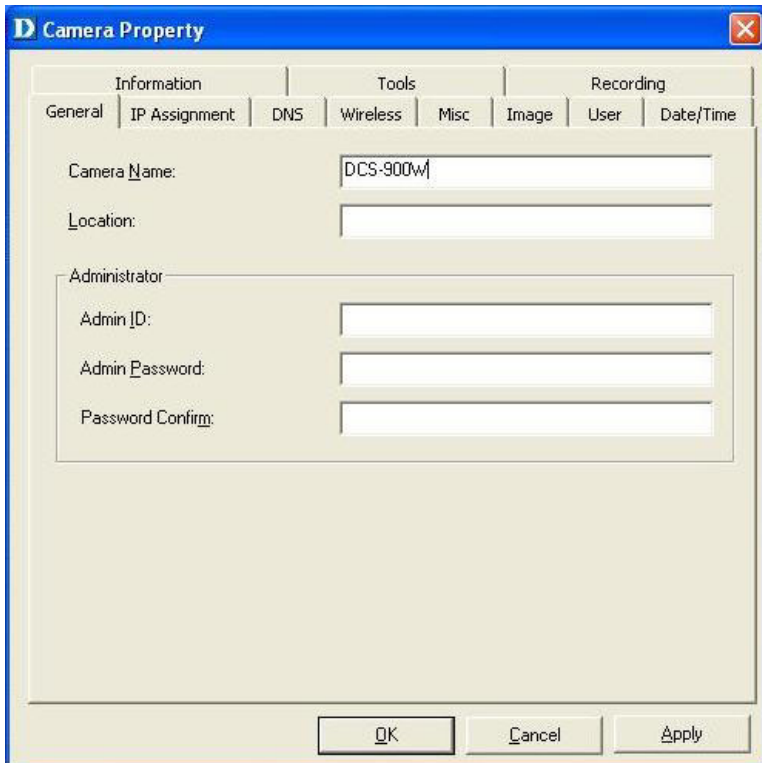
## Camera Property Settings > General

Once you have completed the initial configuration of the DCS-900W using the Web-based interface, you can review or change your configuration using either the Web-based configuration utility or the Property Settings in the DCS-900W IPView Lite.

To access the Property Settings menu, select **Camera > Property** from the main menu. A dialog box will appear which allows for Web Configuration settings and upgrading firmware. The **Camera Property** dialog box will appear. Select the desired options from the tab selections to configure the camera.

### General

Allows settings for the camera name, location and administrator information such as administrator ID and password. *Please refer to the DCS-900W Configuration section under **Advanced – System** on P.19 for further details.*





# IPView Lite (continued)

## Camera Property Settings > IP Assignment

### IP Assignment

If you need to change your IP Address, select the IP Address tab in the Camera property window. There are two options: **Manually Assign** or **Assign Automatically Using**. Please refer to the *DCS-900W Configuration section: Advanced – System on P. 19* for further details.

The screenshot shows the 'Camera Property' dialog box with the 'IP Assignment' tab selected. The dialog is divided into three main sections: Information, Tools, and Recording. The 'Information' section contains sub-tabs: General, IP Assignment (selected), DNS, Wireless, Misc, Image, User, and Date/Time. The 'Manually Assign' radio button is selected, and the IP Address, Subnet Mask, and Default Gateway fields are filled with 192.168.0.20, 255.255.255.0, and 0.0.0.0 respectively. The 'Automatic Assign' section is unselected and contains radio buttons for BARP, BOOTP, DHCP, and PPPoE, along with text boxes for Service Name, User ID, and Password. At the bottom, there are buttons for OK, Cancel, and Apply.

Information	Tools	Recording
General	IP Assignment	DNS
	Wireless	Misc
	Image	User
		Date/Time

Manually Assign

IP Address: 192.168.0.20

Subnet Mask: 255.255.255.0

Default Gateway: 0.0.0.0

Automatic Assign

BARP  DHCP

BOOTP  PPPoE

Service Name: \_\_\_\_\_

User ID: \_\_\_\_\_

Password: \_\_\_\_\_

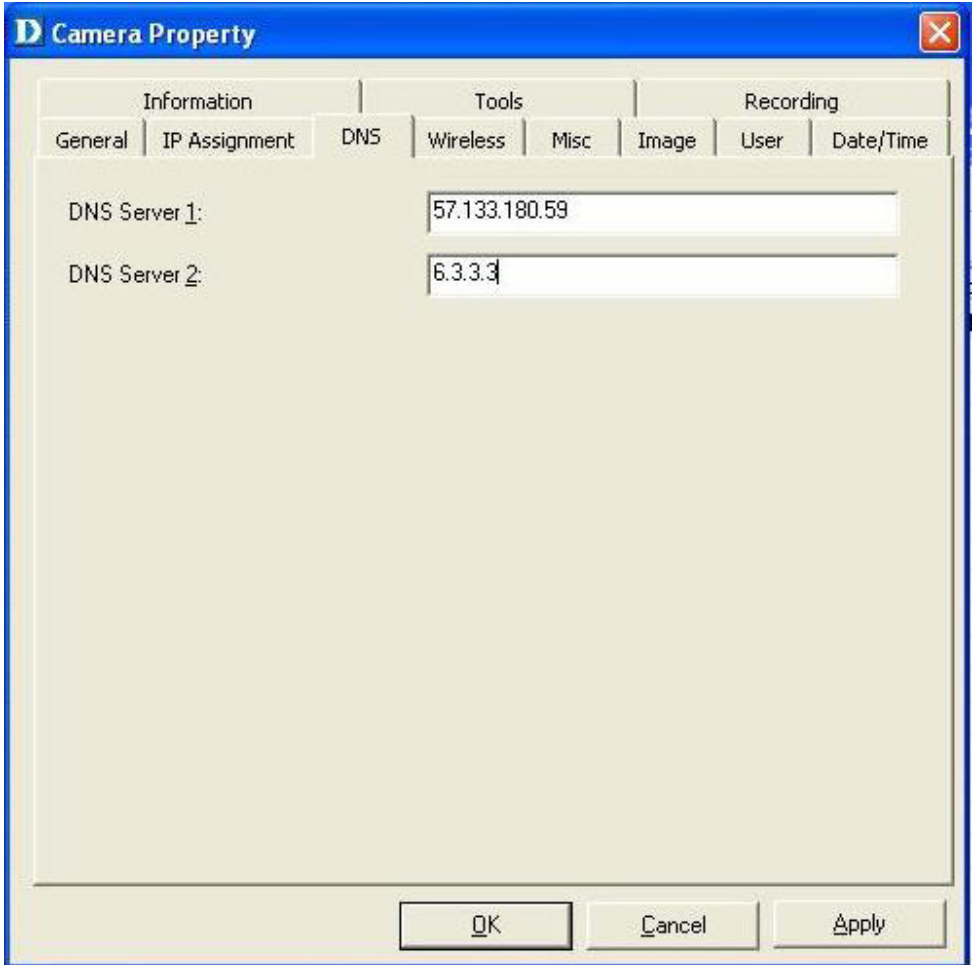
OK Cancel Apply

# IPView Lite *(continued)*

## Camera Property Settings > DNS

### DNS

**DNS** (Domain Name System) server is an Internet service that translates domain names into IP Addresses. *Please refer to the DCS-900W Configuration section under **Advanced - System** on P.19 for further details.*



# IPView Lite (continued)

## Camera Property Settings > Wireless

### Wireless

Your camera's wireless settings must correspond to your network settings for a proper and successful connection to the DCS-900W. *Please refer to the DCS-900W Configuration section under **Advanced–System** on P. 19 for further details.*

The screenshot shows a Windows-style dialog box titled "Camera Property" with a close button in the top right corner. The dialog has a tabbed interface with the following tabs: Information, Tools, and Recording. Under "Information", there are sub-tabs: General, IP Assignment, DNS, Wireless (selected), Misc, Image, User, and Date/Time. The "Wireless" tab is active and contains the following settings:

- Connection Mode:** Two radio buttons are present: "Infrastructure" (selected) and "Adhoc".
- SSID:** A text input field containing the value "default".
- Wireless Channel:** A text input field containing the value "6".
- WEP Key:** A section containing:
  - Format:** Two radio buttons: "ASCII" (selected) and "HEX".
  - Encryption WEP Key:** An empty text input field.
  - Confirm WEP Key:** An empty text input field.

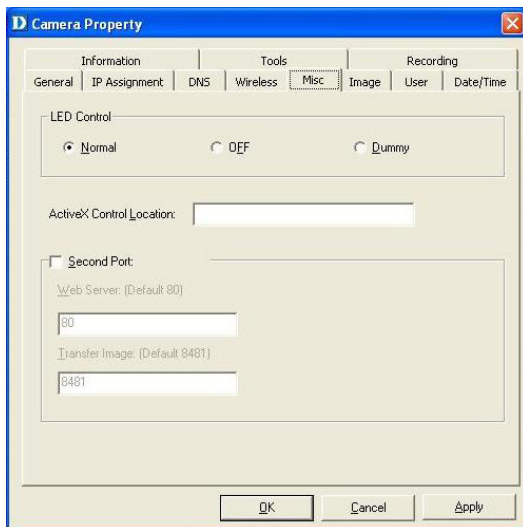
At the bottom of the dialog, there are three buttons: "OK", "Cancel", and "Apply".

# IPView Lite (continued)

## Camera Property Settings > Misc, Image

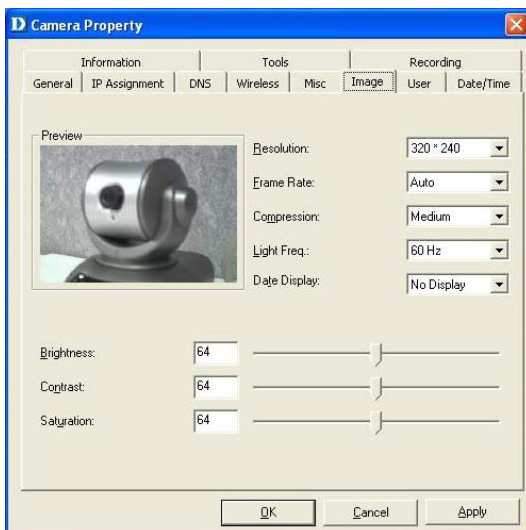
### Misc

Configure the LED Control, ActiveX control location, and second port in this menu. *Please refer to the DCS-900W Configuration section under **Advanced– System** on P.19 for further details.*



### Image

Brightness, contrast, hue, resolution, compression, frame rate, and light frequency can be adjusted for your camera. *Please refer to the DCS-900W Configuration section under **Advanced – Video** on P.33 for further details.*

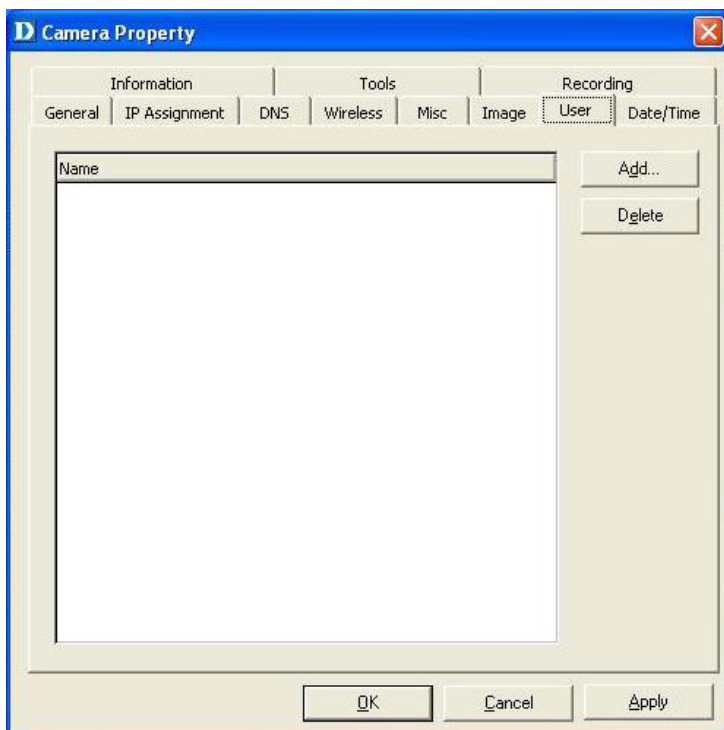


# IPView Lite *(continued)*

## Camera Property Settings > Users

### Users

Set up user accounts with user name and password for camera access. *Please refer to the DCS-900W Configuration Setting under **Tools-Admin** on P.34 for more detailed information.*



To add a user click on the **Add** icon and the **Add User** dialog box will appear. Enter the **User Name** and **Password** into the specific field.

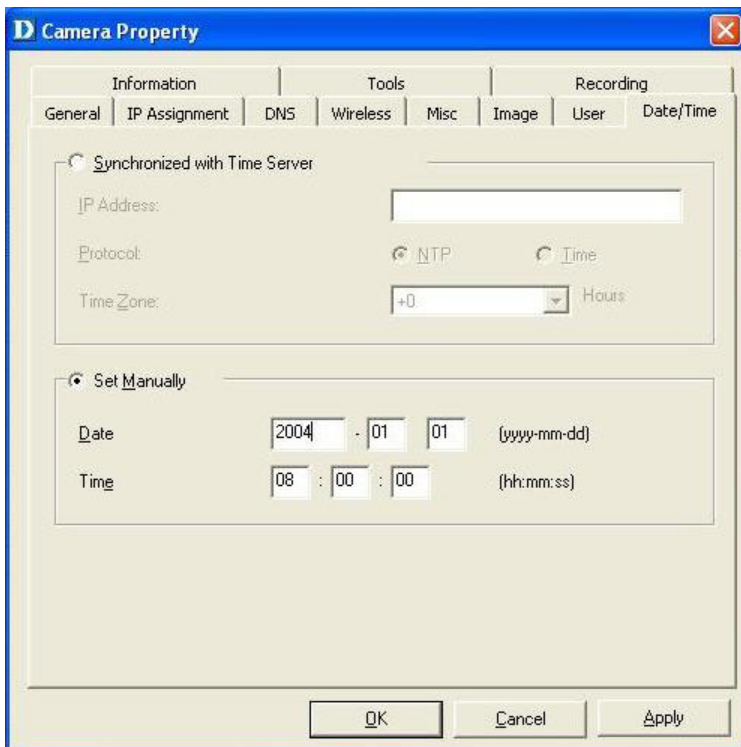
To delete a user, select the user and click **Delete**.

# IPView Lite (continued)

## Camera Property Settings > Date/Time

### Date/Time

Set the camera's time and date to provide correct time information for remote users by selecting **Synchronized with Time Server** or **Set Manually**. Please refer to the *DCS-900W Configuration* section under **Tools-Time** on P.36 for further details.

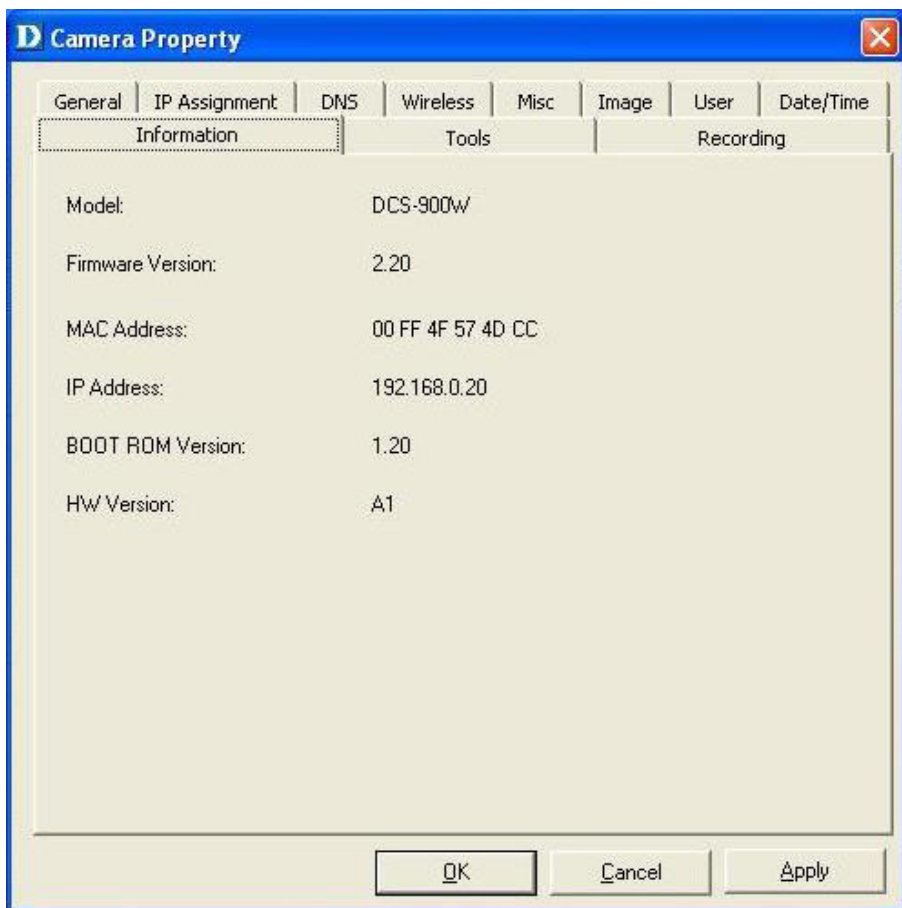


# IPView Lite (continued)

## Camera Property Settings > Information

### Information

Displays information about the camera such as the model, firmware version, MAC address, and IP address. Please refer to the DCS-900W Configuration section under **Status** on P.38 for further details.

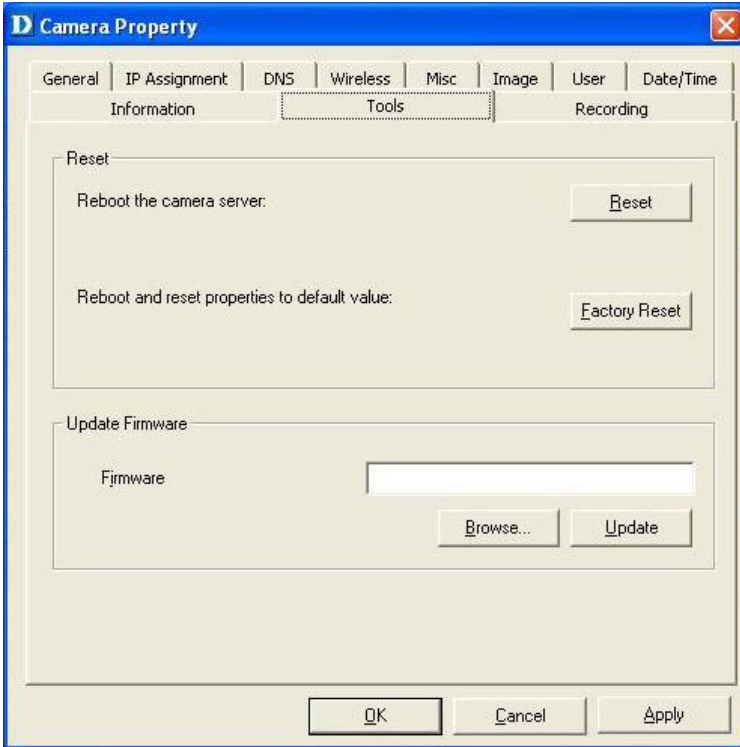


# IPView Lite (continued)

## Camera Property Settings > Tools

### Tools

Reset the camera and update firmware in this section. *Please refer to the DCS-900W Configuration section under **Tools-Default** on P.38 for further details.*



### Upgrade Firmware

Enter the full path of the firmware binary file name in the *Update Firmware* field or you can click on the **Browse** button to select the file. Once the firmware file is entered click on the **Update** button to proceed with the update process. Once completed, click **OK**.



### Warning

The download firmware procedure cannot be interrupted. If the network connection is broken during the download procedure it could cause serious damage to the Internet Camera.



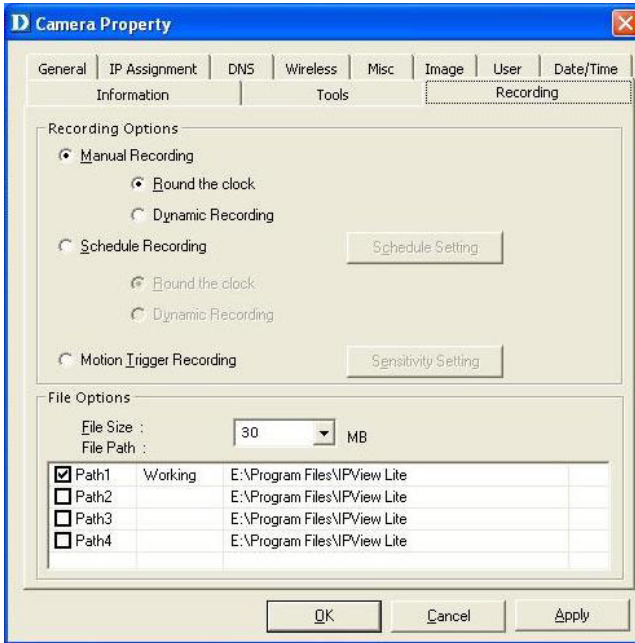
# IPView Lite (continued)

## Camera Property Settings > Recording

### Recording Options

#### Manual Recording

If the **Manual Recording** option is chosen, you must manually start recording in the List view of the DCS-900W in the Menu Bar or by clicking on the Record Icon. Choose **Round the Clock** to enable the DCS-900W to record all video frames continuously to your hard drive. Larger files will be generated if **Round-the-Clock** Manual Recording is chosen. The **Dynamic Recording** option records specific video frames based on how much movement there is in the video captured and will generate much smaller files to save your hard disk drive space.

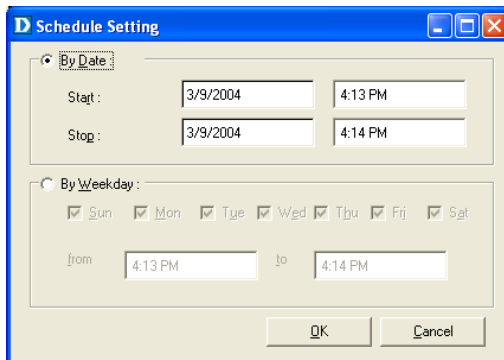
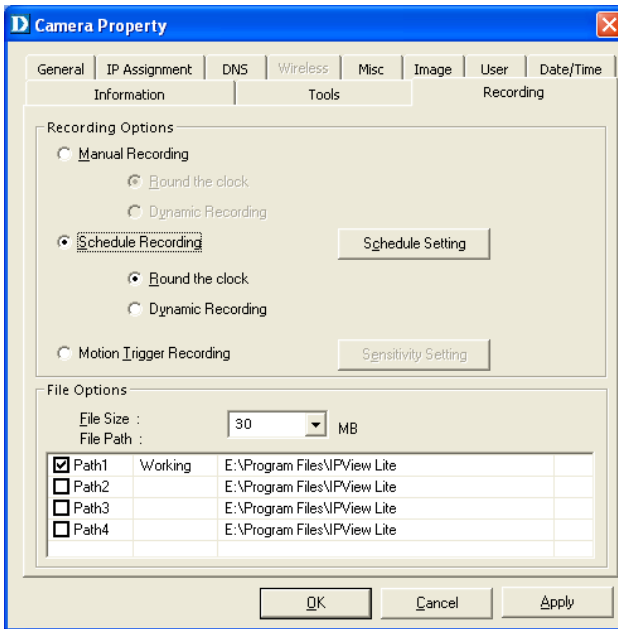


# IPView Lite (continued)

## Camera Property Settings > Recording

### Scheduled Recording

Select **Schedule Recording** to record based on specific times and dates. Click **Schedule Setting** to set the time and date for recording your files. Select **By Date** and enter in the dates, **Start**, and **Stop** Times. The camera will start to record according to the specified date and time period entered. Select **By Week** to indicate specific days to record and the time period. Larger files will be generated if **Round-the-Clock** Manual Recording is chosen. The **Dynamic Recording** option records more video frames based on movement and less frames if there is no movement in the video captured and this will generate much smaller files to save your hard disk drive space.

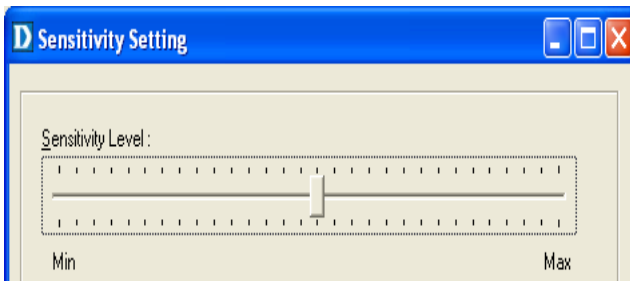
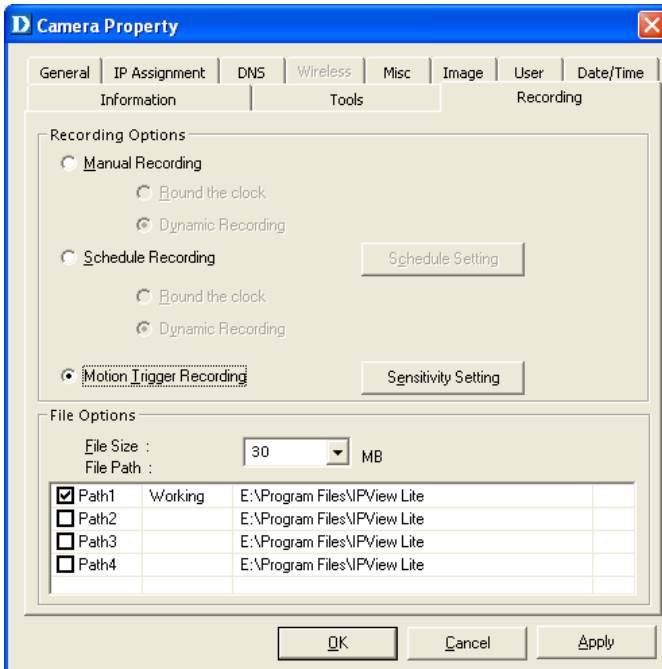


# IPView Lite - Getting Started (continued)

## Camera Property Settings > Recording

### Motion Trigger Recording

The **Motion Trigger Recording** option can be used to record based on motion. The DCS-900W will begin to record any time it detects motion. Click on **Sensitivity Setting** to set the sensitivity levels for the DCS-900W. Moving the bar to the right will make the DCS-900W more sensitive to motion; moving the bar to the left will make the DCS-900W less sensitive to motion.



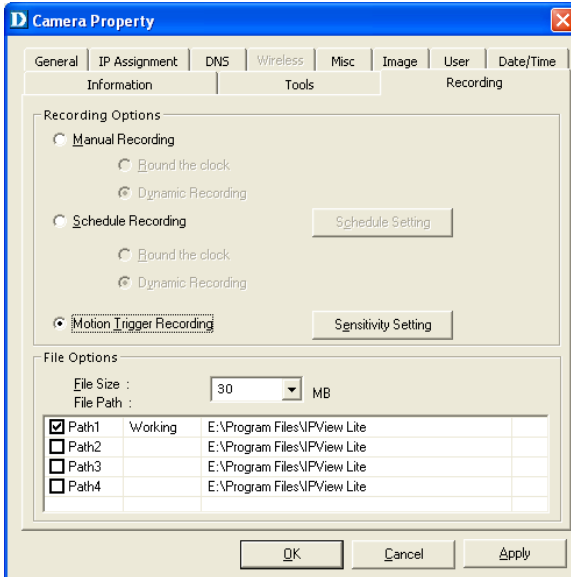
# IPView Lite (continued)

## Camera Property Settings > Recording

### File Options

You can adjust the maximum file size by clicking on **File Size** from the **Recording File Options** field. The file size must be between 10 and 50MB. If the recorded video files reach the file size allocated, video images will be recorded into another file automatically. Be sure to click **Apply** to save your settings, then click **OK** to exit this screen.

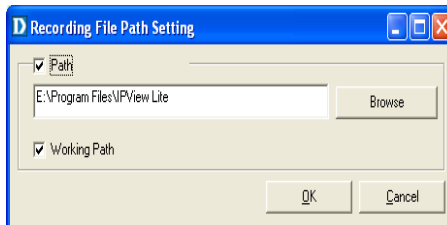
**Note:** *If you are using Windows Media Viewer to view your recorded videos, make sure that you have the most up-to-date version in order to view the videos correctly.*



### File Path

The software will create a folder in the **Recording File Path** specified and record the video images with the file name by date and time. Multiple file paths can be specified to store your video images. The current path where recorded images are being stored is designated as "Working". Once this path has reached full capacity, the images will then be stored in the next designated file path. To change file paths, highlight the file path and double-click to select a new drive/directory to store your video images.

The screen below will appear. Click **Browse** to select a drive/directory, and place a check mark in the **Path** box to enable the drive/directory for use. Click **OK** to save your changes.

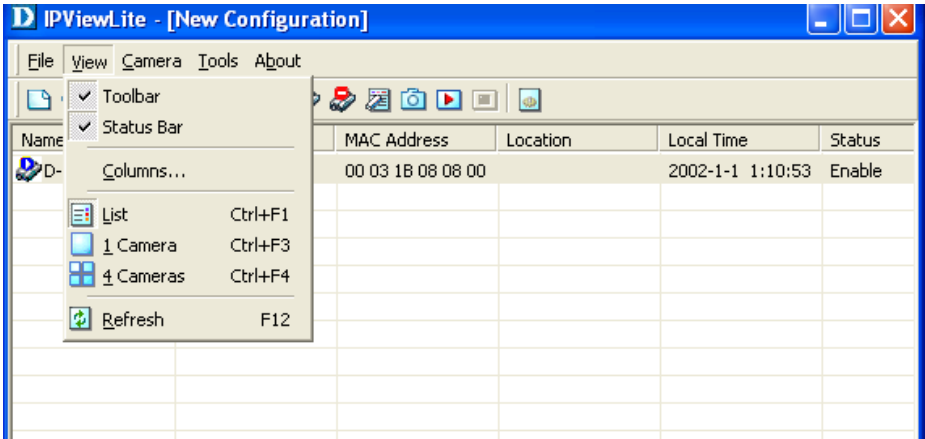




# IPView Lite (continued)

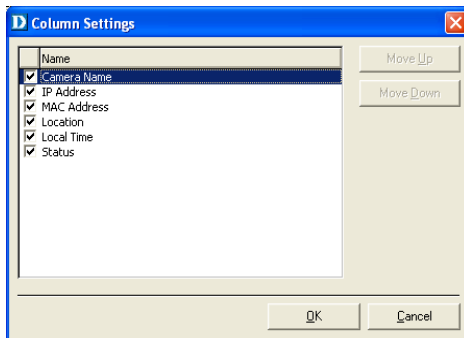
## Menu Bar > View

**View** on the menu bar provides users with management capabilities for **Columns**, **List**, **Camera** and **Refresh**. You can view the **Camera** in **1 Camera** or **4 Camera** mode. The **View** menu bar is pictured below.



## Columns

When **Columns** is launched, a dialog box will appear displaying the **Column Settings**. Select the columns that you wish to appear in the **List View** as illustrated below.



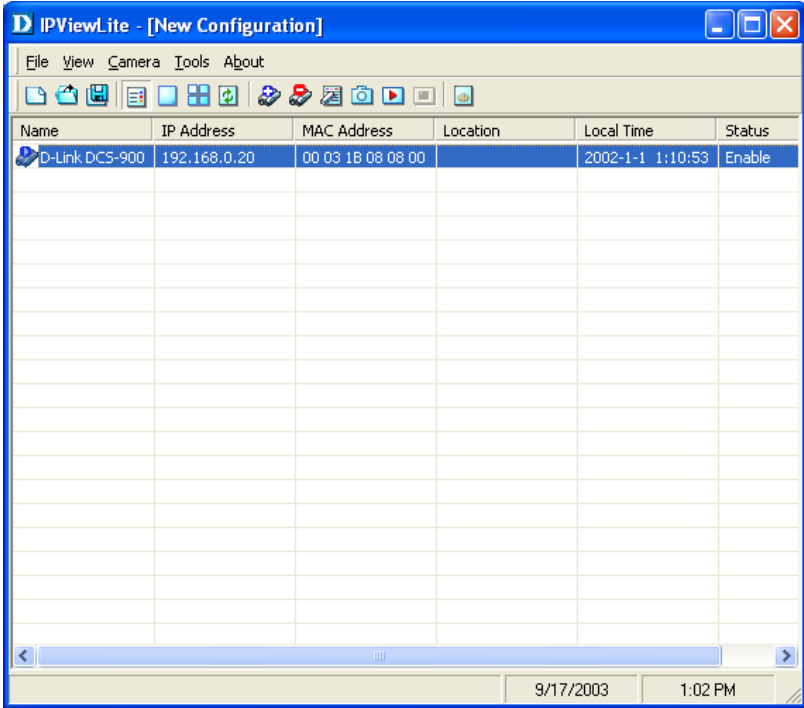
## Viewing Format

You can view the format in **List** view. The **List** viewing format allows easy management and control of each camera.

# IPView Lite (continued)

## List View

All the cameras and their properties, such as the camera name, IP Address, user name, and location, will be displayed in the list view.



### Note:

Right click on any camera to bring up a menu of actions you can apply to the selected camera.

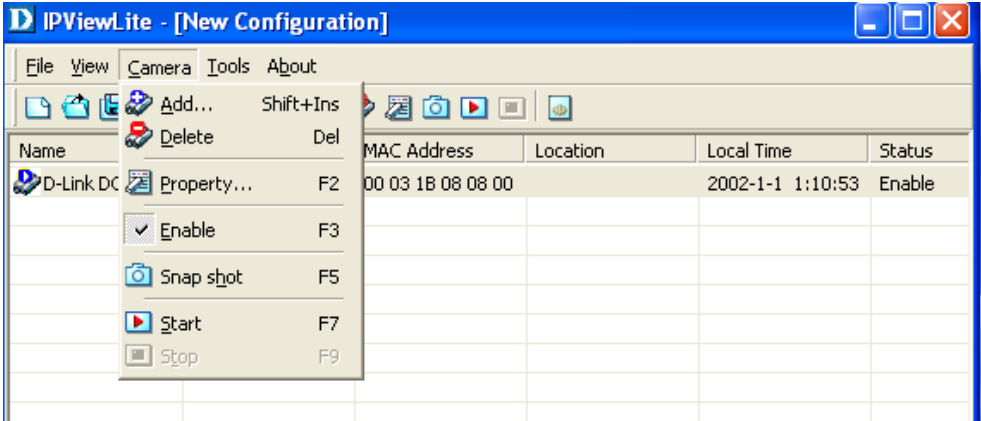
Double-clicking on the desired camera will bring up the **Property** dialog box.

You can click the **Refresh** icon to update the camera list view.

# IPView Lite- Getting Started (continued)

## Menu Bar > Camera, Tools

**Camera** on the menu bar provides options to manage the camera. **Add** up to 4 additional Cameras for viewing. The **Camera** menu also allows you to **Delete** a camera, manage the **Property**, **Enable** real-time video capture, or take a **Snap shot** image.

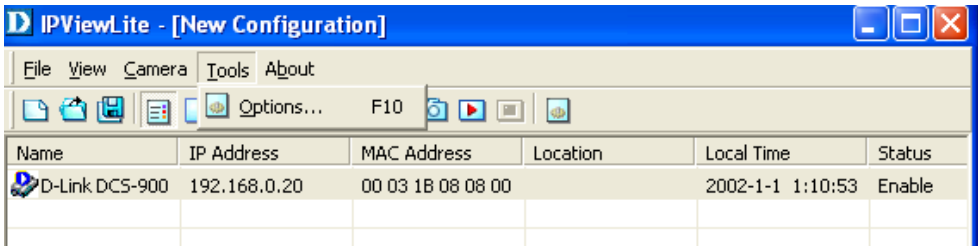


## Enable Function

By default, the video image is enabled. There will be a **check** next to the **Enable** command to show that the Enable function is working. To disable the real-time image select **Camera > Enable** and the real-time video image will stop and shutdown.

## Menu Bar > Tools

**Tools** on the menu bar allows you to change account information and system configuration. From the menu bar, select **Tools > Options**.



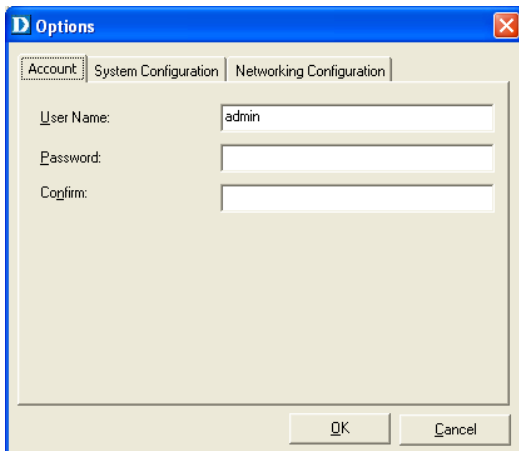


# IPView Lite (continued)

## Menu Bar > Tools

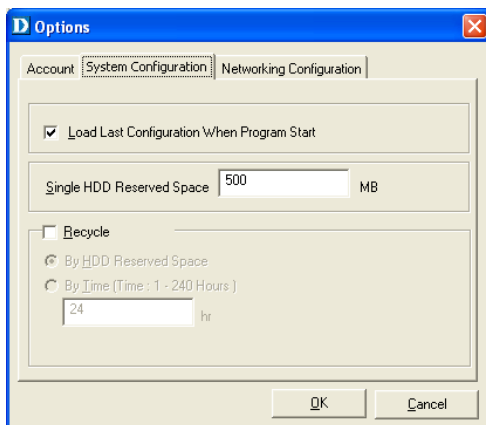
### Account

The account menu is for administrators to change user name and password.



### System Configuration

This menu allows you to set overwrite options to overwrite old recorded files with new recorded files. Check the **Load Last Configuration When Program Starts** to load all your configured settings each time you run IPView Lite. **It is highly recommended that you select this option to save your camera settings in IPView Lite.**



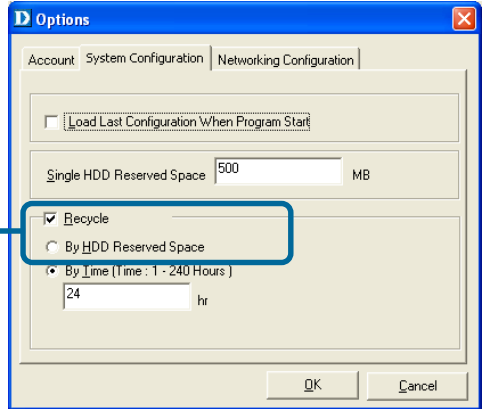
In order to allow old video files to be overwritten and replaced by new recorded files, place a check mark in the **Recycle** Box and click on **By HDD Reserved Space** or **By Time**. The **Single HDD Reserved Space** field refers to the amount of space left on your drive before overwrite takes place. For instance if you enter 1000 MB, and your total hard drive space is 3000 MB, as soon as your drive reaches 2000 MB capacity, your files will be

# IPView Lite *(continued)*

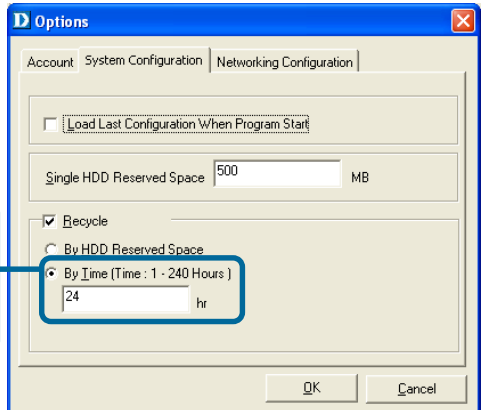
## Menu Bar > Tools

overwritten. You can specify between 300MB to 10GB hard drive reserve space. If you reserve 1000MB and you have 3000MB of hard drive space, recording will recycle once the 2000MB limit is reached. Click on **By Time** to overwrite old files with new files once the time frame that you specify has been reached.

Clicking on **By HDD Reserved Space** allows new files to overwrite old files. You can reserve 300MB to 10GB HDD for the operating system.



Click on **By Time (Time: 1-240 Hours)** to overwrite old files with new files once the time frame that you specify has been reached.



Note: Selecting the **Recycle** option will disable the **Recording File Path Settings** in the **Recording** menu.

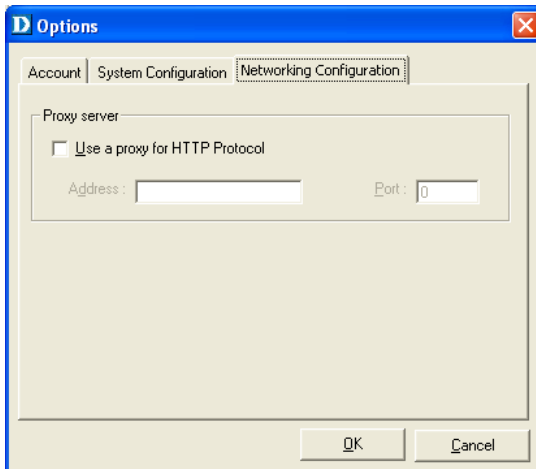
# IPView Lite (continued)

## Menu Bar > Tools

### Networking Configuration

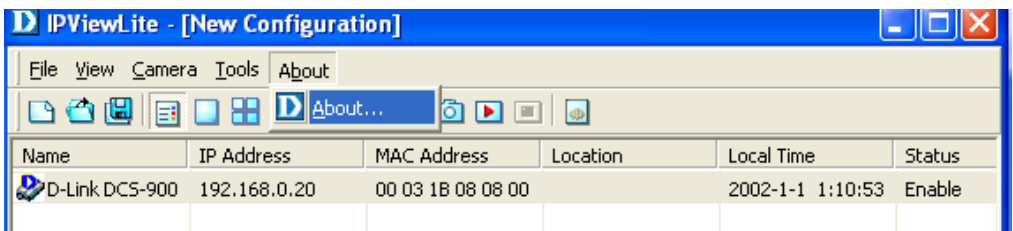
If your LAN uses a Proxy server to connect to the Internet, select **Use a proxy for HTTP Protocol**, and click **OK**. If you choose this option, you must enter the IP address and port that your Proxy server uses to connect to the Internet.

A Proxy server is a computer on your LAN that connects to the Internet without compromising the security of your internal network. A proxy server is normally used on a network to more efficiently manage Internet traffic for groups of users. If you are not sure how your LAN connects to the Internet, contact your system administrator.



## Menu Bar > About

Under **About** on the menu bar, click **About** for camera details such as software version.



# IPView Lite Icon Description



Open a new file. The hot key is **Ctrl+N**.



Open an existing file. The hot key is **Ctrl+O**.



Save a file. The hot key is **Ctrl+S**.



List view format. The hot key is **Ctrl+F1**.



1 Camera view format. The hot key is **Ctrl+F3**.



4 Camera view format. The hot key is **Ctrl+F4**.



Refresh IPView Lite application. The hot key is **F12**.



Add a camera. The hot key is **Shift+Ins**.



Delete a camera. The hot key is **Del**.



Property setting to configure the camera. The hot key is **F2**.



Snap shot to capture a single still image. The hot key is **F5**.



Options to modify the User Name and Password for IPView Lite.  
The hot key is **F10**.



Start recording video image. Alternatively the hot key is **F7**.

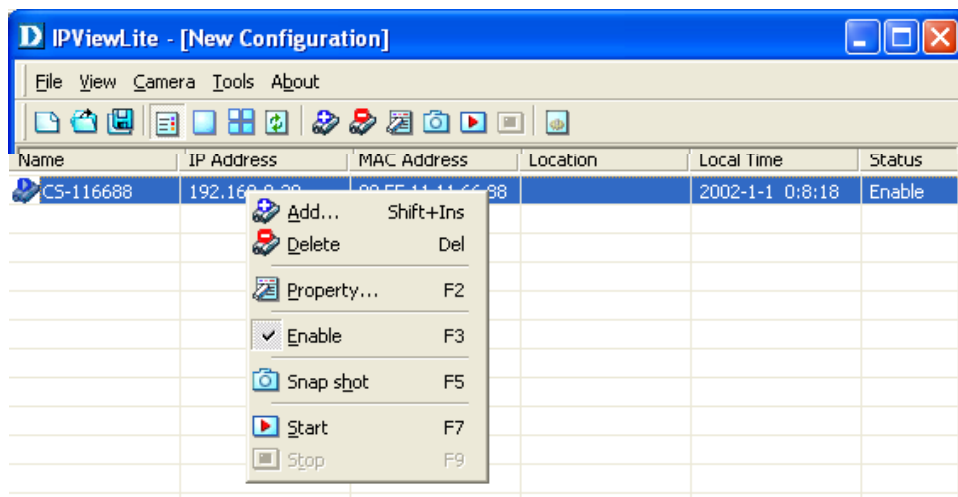


Stop recording video image. Alternatively the hot key is **F9**.

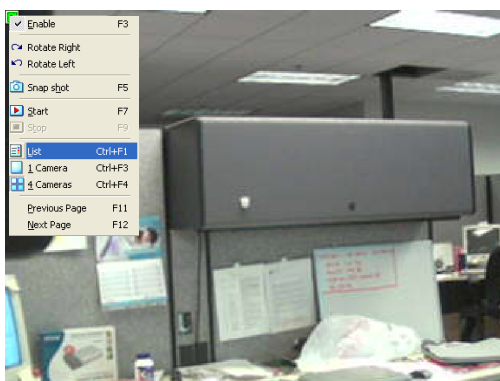
# IPView Lite (continued)

## Context Sensitive Menu

In *List View* format, highlight a camera and right-click to bring up a context sensitive menu for features such as **Add**, **Delete**, **Property**, **Enable**, **Snap shot**, **Start**, and **Stop** recordings.



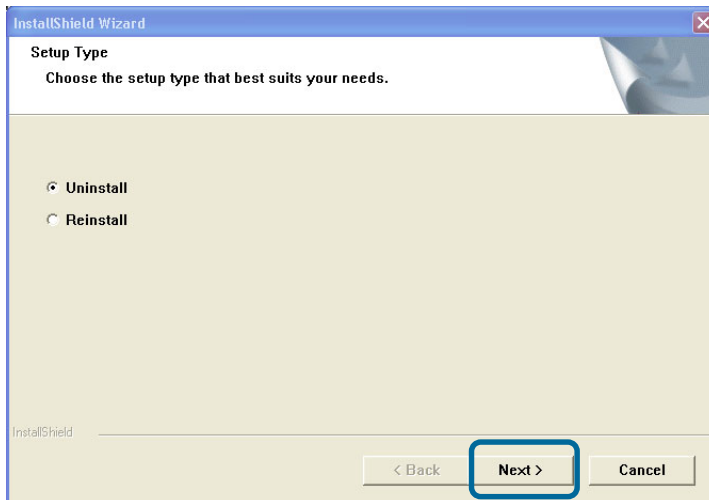
In *View mode* format click on the icon located on the upper left corner of the screen and a case sensitive menu will appear (see below).



These features will be available: **Enable**, **Rotate Right**, **Rotate Left**, **Snap Shot**, **Start**, **Stop**, **List**, **1 Camera** or **4 Cameras**, **Previous Page** and **Next Page**.

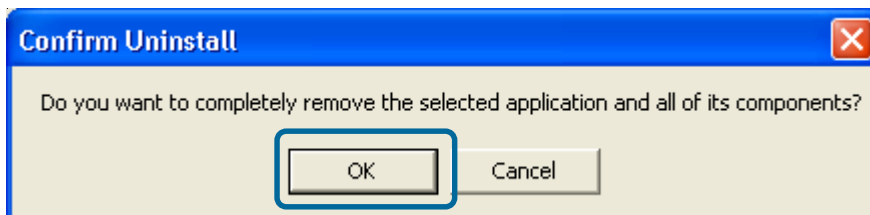
# Uninstall IPView Lite Application

Click on windows **Start Menu / Programs / IPView / Uninstall IPView Lite**. A new prompt screen will be displayed like the one below confirming the removal.



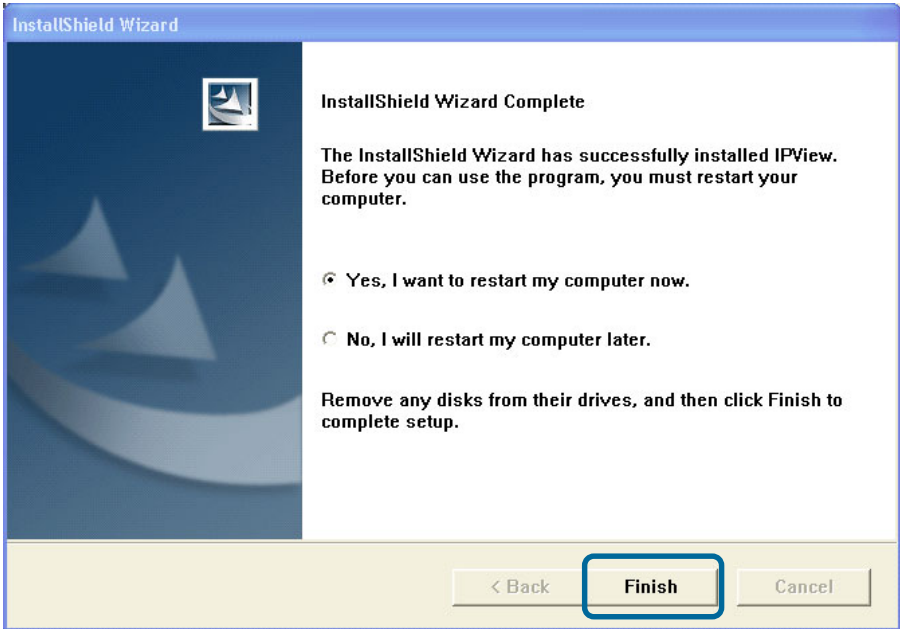
Choose the option that you want and click **Next** to continue the process or click on **Cancel** to reject the uninstall process.

After you click on **Next**, a **Confirm Uninstall** dialog box will appear. Click **OK** to continue the process.



# Uninstall IPView Application *(continued)*

The InstallShield Wizard prompt will appear. Click **Finish** to complete the uninstallation procedure.



# Appendix A

## Frequently Asked Questions

### Internet Camera Features

**Q: What is a Wireless Internet Camera?**

**A:** The Internet Camera is a standalone system connecting directly to an Ethernet or Fast Ethernet network and supported by the wireless transmission based on the IEEE 802.11b standard. It is different from the conventional PC Camera, the Internet Camera is an all-in-one system with built-in CPU and web-based solutions providing a low cost solution that can transmit high quality video images for monitoring. The Internet Camera can be managed remotely, accessed and controlled from any PC/Notebook over the Intranet or Internet via a web browser.

**Q: What is the maximum number of users that can be allowed to access DCS-900W simultaneously?**

**A:** Maximum number of users that can log onto the Internet Camera at the same time is 8. Please keep in mind the overall performance of the transmission speed will slow down when multiple users are logged on simultaneously.

**Q: What algorithm is used to compress the digital image?**

**A:** The DCS-900W utilizes MJPEG image compression technology providing high quality images. MJPEG is a standard for image compression and can be applied to various web browser and application software without the need to install extra software.

**Q: Can I capture still images from the Internet Camera?**

**A:** Yes you are able to capture still images with the snapshot function from the IPView Lite application supplied with the Internet Camera CD-ROM. You may also use the first page that shows up when you type in the IP Address of the camera. When viewing this page, press the “**refresh**” button on your web browser to update the image. *Please refer to the User’s Guide for detailed information.*



# Frequently Asked Questions *(continued)*

## Internet Camera Installation

**Q: Can the DCS-900W be used outdoors?**

**A:** The DCS-900W is not weatherproof. It is not recommended that you use the camera outdoors.

**Q: What network cabling is required for the Internet Camera?**

**A:** The Internet Camera uses Category 5 UTP Twisted-pair cable allowing 10 Base-T and 100 Base-T networking.

**Q: Can the Internet Camera be setup as a PC-cam on the computer?**

**A:** No, the Internet Camera is used only on Ethernet and Fast Ethernet network and supported by wireless transmission.

**Q: Can the Internet Camera be connected on the network if it consists of only private IP Addresses?**

**A:** Yes, the Internet Camera can be connected to a LAN with private IP Addresses.

**Q: Can the Internet Camera be installed if a firewall exists on the network?**

**A:** If a firewall exists on the network, port 80 needs to be open. If port 80 is not available, a second port needs to be opened. Optional ports are 800, 801, 802, etc. The corresponding port needs to be opened on the firewall as well.

## Troubleshooting

**Q: I cannot access the Internet Camera from a web browser.**

**A1:** The possible cause might be the IP Address for the Internet Camera is already being used by another device. To correct the possible problem, you need to first disconnect the Internet Camera from the network. Then run the PING utility (follow the instructions in *Appendix B - PING Your IP Address.*) If there is a reply, it indicates that there is another device on the network with the same IP address. You will need to run the Install Wizard again and change the IP address of the camera.

**A2:** Other possible problems might be due to the network cable. Try replacing your network cable. Test the network interface of the product by connecting a local computer to the unit, utilizing a standard Crossover (hub to hub) Cable. If the problem is not solved the Internet Camera might be faulty.

# Troubleshooting *(continued)*

## Internet Camera Installation

### **Q: Why does the Power LED not light up constantly?**

**A:** The power supply used might be at fault. Confirm that you are using the provided power supply, which is DC 5V, for the Internet Camera and verify that the power supply is well connected. Also, the LED could have been configured to “turn off.”

### **Q: Why does the LAN LED not light up properly?**

**A1:** There might be a problem with the network cable. To confirm that the cables are working, PING the address of a known device on the network. If the cabling is OK and your network is reachable, you should receive a reply similar to the following (...bytes = 32 time = 2 ms). Also, the LED could have been configured to “turn off.”

**A2:** The network device utilized by the Internet Camera is not functioning properly, such as hubs or switches. Confirm the power for the devices are well connected and functioning properly.

### **Q: Why does the Internet Camera work locally but not externally?**

**A1:** Might be caused from the firewall protection. Check the Internet firewall with your system administrator. The firewall may need to have some settings changed in order for the Internet Camera to be accessible outside your local LAN. See page 27 for more information about installing your camera behind a router.

**A2:** Make sure that the Internet Camera isn't conflicting with any web server you may have running on your network.

**A3:** The default router setting might be a possible reason. Check that the configuration of the router settings allow the Internet Camera to be accessed outside your local LAN.

### **Q: Why does a series of broad vertical white lines appear through out the image?**

**A:** It could be that the CMOS sensor (a square panel situated behind the lens that measures the light signals and changes it into a digital format so your computer can present it into an image that you are familiar with) has become overloaded when it has been exposed to bright lights such as direct exposure to sunlight or halogen lights. Reposition the Internet Camera into a more shaded area immediately as prolonged exposure to bright lights will damage the CMOS sensor.

# Troubleshooting *(continued)*

## Internet Camera Installation

**Q: Noisy images occur. How can I solve the problem?**

**A1:** The video images might be noisy if the Internet Camera is used in a very low light environment. To solve this issue you need more lighting.

**Q: The images are poor quality, how can I improve the image quality?**

**A1:** Make sure that your computer's display properties are set to at least 16-bit color. Using 16 or 256 colors on your computer will produce dithering artifacts in the image, making the image look as if it has bad quality.

**A2:** The configuration on the Internet Camera image display is incorrect. Through the Web Configuration Video section of the web management (see P. 33) you need to adjust the image related parameters for improved images such as: brightness, contrast, hue and light frequency. Please refer to the Web Configuration section for detailed information.

**Q: There are no images available through the Web browser?**

**A1:** The ActiveX might be disabled. If you are viewing the images from Internet Explorer make sure ActiveX has been enabled in the Internet Options menu. Alternatively, you can use the Java Applet for viewing the required images.

**A2:** If you are using Windows XP, please make sure that you have downloaded Java and installed it properly.

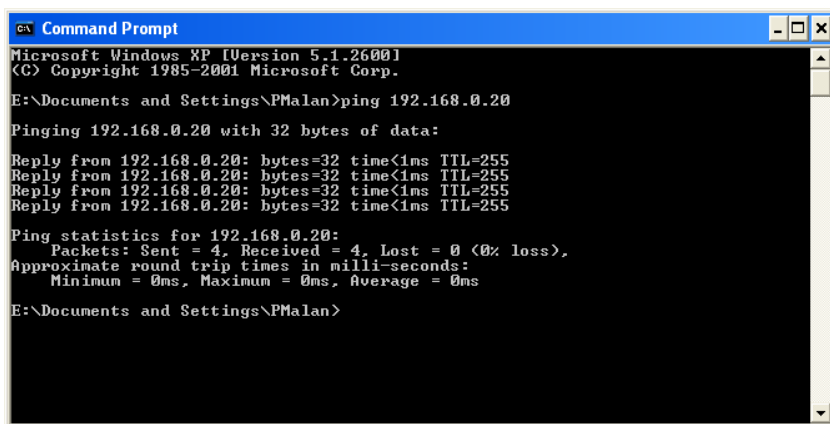
**A3:** Make sure that your Web browser supports Java. If you are using Internet Explorer or Netscape Navigator with a version number of lower than 5, then you will need to upgrade your Web browser software in order to view the streaming video transmitted by the Internet Camera.

# How to Ping Your IP Address

The PING (Packet Internet Groper) command can determine whether a specific IP Address is accessible by sending a packet to the specific address and waiting for a reply. It is a very useful tool to confirm if the IP Address of the Internet Camera is a valid IP address over the network.

Follow the step-by-step procedure below to utilize the PING command.

Start a DOS window Start>Program>Accessories>Command Prompt  
Type ping x.x.x.x, where x.x.x.x is the IP Address of the Internet Camera.



```
Command Prompt
Microsoft Windows XP [Version 5.1.2600]
(C) Copyright 1985-2001 Microsoft Corp.

E:\Documents and Settings\PMalan>ping 192.168.0.20

Pinging 192.168.0.20 with 32 bytes of data:

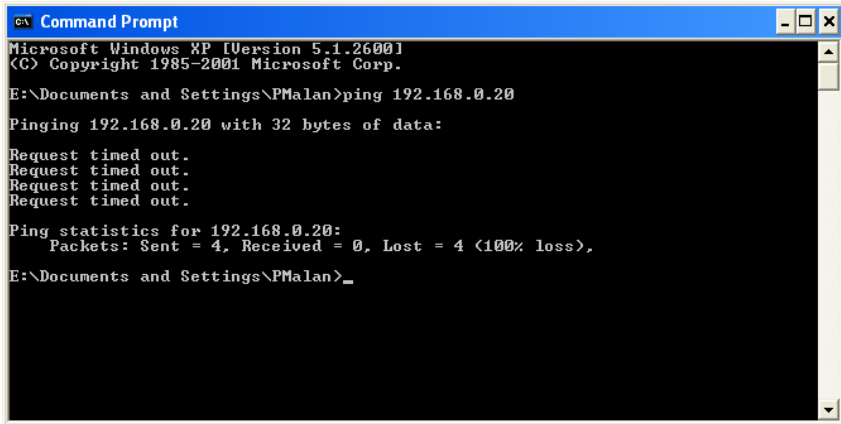
Reply from 192.168.0.20: bytes=32 time<1ms TTL=255
Reply from 192.168.0.20: bytes=32 time<1ms TTL=255
Reply from 192.168.0.20: bytes=32 time<1ms TTL=255
Reply from 192.168.0.20: bytes=32 time<1ms TTL=255

Ping statistics for 192.168.0.20:
    Packets: Sent = 4, Received = 4, Lost = 0 (0% loss),
    Approximate round trip times in milli-seconds:
        Minimum = 0ms, Maximum = 0ms, Average = 0ms

E:\Documents and Settings\PMalan>
```

# How to Ping your IP Address *(continued)*

1) A successful connection to the camera will be indicated by 4 reply statements (above). If you fail to connect to your camera you will see the following:



```
Command Prompt
Microsoft Windows XP [Version 5.1.2600]
(C) Copyright 1985-2001 Microsoft Corp.

E:\Documents and Settings\PMalan>ping 192.168.0.20

Pinging 192.168.0.20 with 32 bytes of data:

Request timed out.
Request timed out.
Request timed out.
Request timed out.

Ping statistics for 192.168.0.20:
    Packets: Sent = 4, Received = 0, Lost = 4 (100% loss),

E:\Documents and Settings\PMalan>_
```

2) Check to see if you have entered your camera's IP Address correctly and reassign your camera's IP Address to a valid IP address of the network.

## Time Zone Table

GMT stands for Greenwich Mean Time, which is the global time that all time zones are measured from.

(GMT-12:00) International Date Line West  
(GMT-11:00) Midway Island, Samoa  
(GMT-10:00) Hawaii  
(GMT-09:00) Alaska  
(GMT-08:00) Pacific Time (US & Canada); Tijuana  
(GMT-07:00) Arizona  
(GMT-07:00) Chihuahua, La Paz, Mazatlan  
(GMT-07:00) Mountain Time (US & Canada)  
(GMT-06:00) Central America  
(GMT-06:00) Central Time (US & Canada)  
(GMT-06:00) Guadalajara, Mexico City, Monterrey  
(GMT-06:00) Saskatchewan  
(GMT-05:00) Bogota, Lima, Quito  
(GMT-05:00) Eastern Time (US & Canada)  
(GMT-05:00) Indiana (East)  
(GMT-04:00) Atlantic Time (Canada)  
(GMT-04:00) Caracas, La Paz  
(GMT-04:00) Santiago  
(GMT-03:30) Newfoundland  
(GMT-03:00) Brasilia  
(GMT-03:00) Buenos Aires, Georgetown  
(GMT-03:00) Greenland  
(GMT-02:00) Mid-Atlantic  
(GMT-01:00) Azores  
(GMT-01:00) Cape Verde Is.  
(GMT) Casablanca, Monrovia  
(GMT) Greenwich Mean Time : Dublin, Edinburgh, Lisbon, London  
(GMT+01:00) Amsterdam, Berlin, Bern, Rome, Stockholm, Vienna  
(GMT+01:00) Belgrade, Bratislava, Budapest, Ljubljana, Prague  
(GMT+01:00) Brussels, Copenhagen, Madrid, Paris  
(GMT+01:00) Sarajevo, Skopje, Warsaw, Zagreb  
(GMT+01:00) West Central Africa  
(GMT+02:00) Athens, Istanbul, Minsk  
(GMT+02:00) Bucharest  
(GMT+02:00) Cairo  
(GMT+02:00) Harare, Pretoria  
(GMT+02:00) Helsinki, Kyiv, Riga, Sofia, Tallinn, Vilnius  
(GMT+02:00) Jerusalem  
(GMT+03:00) Baghdad  
(GMT+03:00) Kuwait, Riyadh  
(GMT+03:00) Moscow, St. Petersburg, Volgograd  
(GMT+03:00) Nairobi

## Time Zone Table (continued)

(GMT+03:30) Tehran  
(GMT+04:00) Abu Dhabi, Muscat  
(GMT+04:00) Baku, Tbilisi, Yerevan  
(GMT+04:30) Kabul  
(GMT+05:00) Ekaterinburg  
(GMT+05:00) Islamabad, Karachi, Tashkent  
(GMT+05:30) Chennai, Kolkata, Mumbai, New Delhi  
(GMT+05:45) Kathmandu  
(GMT+06:00) Almaty, Novosibirsk  
(GMT+06:00) Astana, Dhaka  
(GMT+06:00) Sri Jayawardenepura  
(GMT+06:30) Rangoon  
(GMT+07:00) Bangkok, Hanoi, Jakarta  
(GMT+07:00) Krasnoyarsk  
(GMT+08:00) Beijing, Chongqing, Hong Kong, Urumqi  
(GMT+08:00) Irkutsk, Ulaan Bataar  
(GMT+08:00) Kuala Lumpur, Singapore  
(GMT+08:00) Perth  
(GMT+08:00) Taipei  
(GMT+09:00) Osaka, Sapporo, Tokyo  
(GMT+09:00) Seoul  
(GMT+09:00) Yakutsk  
(GMT+09:30) Adelaide  
(GMT+09:30) Darwin  
(GMT+10:00) Brisbane  
(GMT+10:00) Canberra, Melbourne, Sydney  
(GMT+10:00) Guam, Port Moresby  
(GMT+10:00) Hobart  
(GMT+10:00) Vladivostok  
(GMT+11:00) Magadan, Solomon Is., New Caledonia  
(GMT+12:00) Auckland, Wellington  
(GMT+12:00) Fiji, Kamchatka, Marshall Is.  
(GMT+13:00) Nuku'alofa

# Xplug Control Installation

## Installation to a Web Server

### Important Information

It is highly recommended to install the Xplug Control application to the Web Server for Internet Explorer 5.0. It must be installed to a Public Domain with a Fixed IP Address.

#### 1. Installation:

Copy the “xplug.ocx” file to any Web Server table. Note the web address of the file location so that you can use it in the next step.

#### 2. Configuration:

From the Web Configuration menu, select “**System**” and under the “**Loading ActiveX From**” input web server location, type:  
<http://www.web server location.com/>.

Once the settings are completed, you should now be able to access the Internet Camera from the web browser by selecting ActiveX mode.



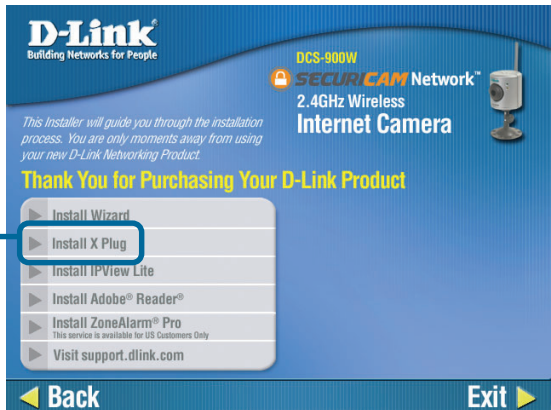
# Installation of the X-Plug to a Local PC (continued)

Insert the CD-ROM into the CD-ROM drive to initiate the auto-run program. Once completed, a menu screen will appear as follows:

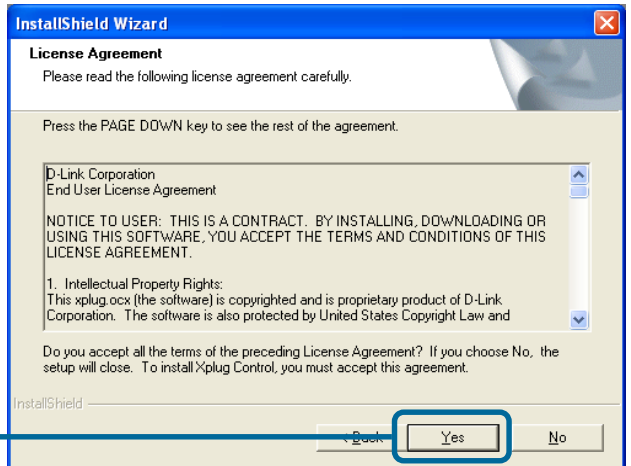
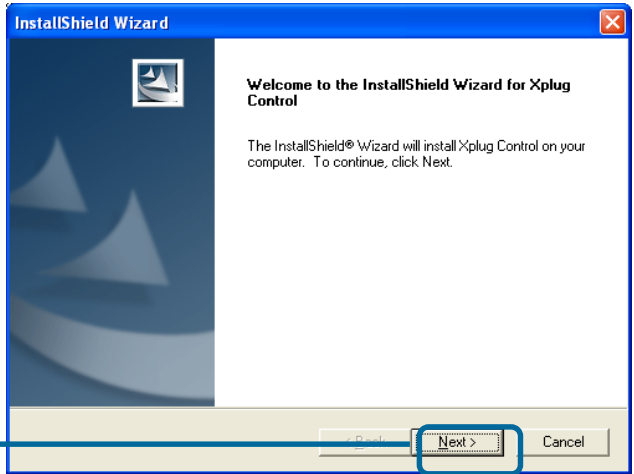
Click **Install Software**.



To install Xplug Control click on the **Xplug Control** button to activate the installation procedure for the plug-in program. Once executed a prompt will appear requesting the input of the desired language selection. Make the desired selection and click on **OK** to continue.

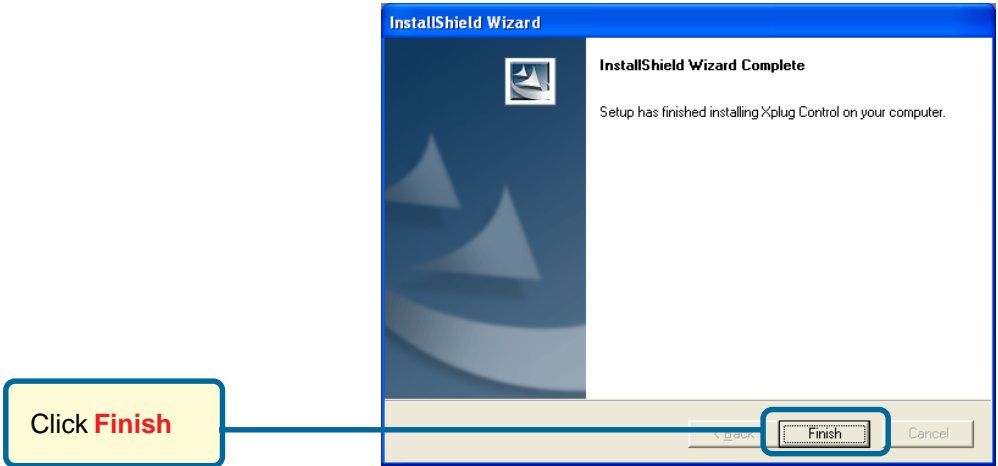


# Installation of the X-Plug to a Local PC (continued)



# Installation of the X-Plug to a Local PC

*(continued)*



## Adjusting the Camera Focus

To help you get the best image quality, keep in mind that while adjusting the DCS-900W focus you can preview the image quality from your Web browser.



**Camera Lens**  
Adjust by turning  
clockwise or  
counter-clockwise

## Adjusting the Camera Focus *(continued)*

### **Note:**

You can further adjust the Internet Camera's image quality through the Web Configuration under *Advanced-Video* on P. 33. Please refer to the Web Configuration section for further details.



### **Warning**

Direct exposure to sunlight may cause permanent damage to the CMOS sensor. Therefore do not expose the Internet Camera's lens directly to sunlight.

The Internet Camera is designed for indoor usage and if your application requires prolonged exposure to sunlight, a sun visor is recommended to protect the Internet Camera.

# Technical Specifications

## Video specification

Resolution:	640 x 480 pixel
Sensor:	1/3" color CMOS sensor
Gain control:	Automatic
Exposure:	Automatic
White Balance:	Automatic
Shutter:	Electronics 1/60 ~ 1/15000 sec
Minimum Illumination:	<u>2.5lux@f1.4</u> , 3000K color
Focal Length:	6.0 mm
Aperture:	F=1.8

## Image (Video Setting)

Image compression:	JPEG
Frame rate:	<u>20fps@SIF</u> , 10fps@VGA
Compression Rate selection:	5 level (Very Low, Low, Medium, High, Very High)
Frame rate setting:	1, 5, 7, 15, 20, auto (depends on the video format)
Video resolution:	320x240, 640x480
Brightness control:	Range 1- 128
Contrast control:	Range 1- 128
Hue control:	Range 1- 128

## System Hardware

LAN Connector:	One RJ-45 port to connect to 10/100Mbps Ethernet, auto-sensed
WLAN Connector:	One 802.11b Wireless Antenna

# Technical Specifications *(continued)*

LED Indicator:	Power LED (Green) LAN Activity LED (Orange) (Normal / Off / Dummy)
Power Supply:	DC 5V/2.5A, switching type
Power Communication:	4.5 Watt (900mA x 5V)

## Communication Support

Communication:	10/100Mbps Ethernet and Fast Ethernet or 802.11b Wireless
Communication protocol:	HTTP, TCP/IP, UDP, ARP, ICMP, BOOTP, RARP, DHCP, PPPoE

## Web Configuration Requirements:

- Internet Explorer 5.0 or above or Netscape 6.0 or above
- CPU: Pentium II, 266 MHz or above
- Memory Size: 32 MB (64 MB recommended)
- VGA card resolution: 800x600 or above

## PC Requirements for IPView Lite:

- Windows XP, Windows 2000, Windows Me, Windows 98SE
- Pentium III, 450 MHz CPU or above
- 128 MB (256 MB Recommended)

## EMI & Safety

FCC, CE, VCCI

\*Maximum wireless signal rate based on IEEE Standard 802.11b specifications. Actual data throughput will vary. Network conditions and environmental factors, including volume of network traffic, building materials and construction, and network overhead lower actual data throughput rate.

# Contacting Technical Support

## Technical Support

You can find software updates and user documentation on the D-Link website.

D-Link provides free technical support for customers within the United States and within Canada for the duration of the warranty period on this product.

U.S. and Canadian customers can contact D-Link technical support through our web site, or by phone.

### Tech Support for customers within the United States:

***D-Link Technical Support over the Telephone:***

(877) 453-5465

24 hours a day, seven days a week.

***D-Link Technical Support over the Internet:***

<http://support.dlink.com>

email:[support@dlink.com](mailto:support@dlink.com)

### Tech Support for customers within Canada:

***D-Link Technical Support over the Telephone:***

(800) 361-5265

Monday to Friday 7:30am to 12:00am EST

***D-Link Technical Support over the Internet:***

<http://support.dlink.ca>

email:[support@dlink.ca](mailto:support@dlink.ca)

*When contacting technical support, please provide the following information:*

- *Serial number of the unit*
- *Model number or product name*
- *Software type and version number*

# Warranty

Subject to the terms and conditions set forth herein, D-Link Systems, Inc. (“D-Link”) provides this Limited warranty for its product only to the person or entity that originally purchased the product from:

- D-Link or its authorized reseller or distributor and
- Products purchased and delivered within the fifty states of the United States, the District of Columbia, U.S. Possessions or Protectorates, U.S. Military Installations, addresses with an APO or FPO.

**Limited Warranty:** D-Link warrants that the hardware portion of the D-Link products described below will be free from material defects in workmanship and materials from the date of original retail purchase of the product, for the period set forth below applicable to the product type (“Warranty Period”), except as otherwise stated herein.

1-Year Limited Warranty for the Product(s) is defined as follows:

- Hardware (excluding power supplies and fans) One (1) Year
- Power Supplies and Fans One (1) Year
- Spare parts and spare kits Ninety (90) days

D-Link’s sole obligation shall be to repair or replace the defective Hardware during the Warranty Period at no charge to the original owner or to refund at D-Link’s sole discretion. Such repair or replacement will be rendered by D-Link at an Authorized D-Link Service Office. The replacement Hardware need not be new or have an identical make, model or part. D-Link may in its sole discretion replace the defective Hardware (or any part thereof) with any reconditioned product that D-Link reasonably determines is substantially equivalent (or superior) in all material respects to the defective Hardware. Repaired or replacement Hardware will be warranted for the remainder of the original Warranty Period from the date of original retail purchase. If a material defect is incapable of correction, or if D-Link determines in its sole discretion that it is not practical to repair or replace the defective Hardware, the price paid by the original purchaser for the defective Hardware will be refunded by D-Link upon return to D-Link of the defective Hardware. All Hardware (or part thereof) that is replaced by D-Link, or for which the purchase price is refunded, shall become the property of D-Link upon replacement or refund.

**Limited Software Warranty:** D-Link warrants that the software portion of the product (“Software”) will substantially conform to D-Link’s then current functional specifications for the Software, as set forth in the applicable documentation, from the date of original retail purchase of the Software for a period of ninety (90) days (“Warranty Period”), provided that the Software is properly installed on approved hardware and operated as contemplated in its documentation. D-Link further warrants that, during the Warranty Period, the magnetic media on which D-Link delivers the Software will be free of physical defects. D-Link’s sole obligation shall be to replace the non-conforming Software (or defective media) with software that substantially conforms to D-Link’s functional specifications for the Software or to refund at D-Link’s sole discretion. Except as otherwise agreed by D-Link in writing, the replacement Software is provided only to the original licensee, and is subject to the terms and conditions of the license granted by D-Link for the Software. Software will be warranted for the remainder of the original Warranty Period from the date of original retail purchase. If a material non-conformance is incapable of correction, or if D-Link determines in its sole discretion that it is not practical to replace the non-conforming Software, the price paid by the original licensee for the non-conforming Software will be refunded by D-Link; provided that the non-conforming Software (and all copies thereof) is first returned to D-Link. The license granted respecting any Software for which a refund is given automatically terminates.

**Non-Applicability of Warranty:** The Limited Warranty provided hereunder for hardware and software of D-Link’s products will not be applied to and does not cover any refurbished product and any product purchased through the inventory clearance or liquidation sale or other sales in which D-Link, the sellers, or the liquidators expressly disclaim their warranty obligation pertaining to the product and in that case, the product is being sold “As-Is” without any warranty whatsoever including, without limitation, the Limited Warranty as described herein, notwithstanding anything stated herein to the contrary.

**Submitting A Claim:** The customer shall return the product to the original purchase point based on its return policy. In case the return policy period has expired and the product is within warranty, the customer shall submit a claim to D-Link as outlined below:



## Warranty (continued)

- The customer must submit with the product as part of the claim a written description of the Hardware defect or Software nonconformance in sufficient detail to allow D-Link to confirm the same.
- The original product owner must obtain a Return Material Authorization (“RMA”) number from the Authorized D-Link Service Office and, if requested, provide written proof of purchase of the product (such as a copy of the dated purchase invoice for the product) before the warranty service is provided.
- After an RMA number is issued, the defective product must be packaged securely in the original or other suitable shipping package to ensure that it will not be damaged in transit, and the RMA number must be prominently marked on the outside of the package. Do not include any manuals or accessories in the shipping package. D-Link will only replace the defective portion of the Product and will not ship back any accessories.
- The customer is responsible for all in-bound shipping charges to D-Link. No Cash on Delivery (“COD”) is allowed. Products sent COD will either be rejected by D-Link or become the property of D-Link. Products shall be fully insured by the customer and shipped to **D-Link Systems, Inc., 17595 Mt. Herrmann, Fountain Valley, CA 92708**. D-Link will not be held responsible for any packages that are lost in transit to D-Link. The repaired or replaced packages will be shipped to the customer via UPS Ground or any common carrier selected by D-Link, with shipping charges prepaid. Expedited shipping is available if shipping charges are prepaid by the customer and upon request.

D-Link may reject or return any product that is not packaged and shipped in strict compliance with the foregoing requirements, or for which an RMA number is not visible from the outside of the package. The product owner agrees to pay D-Link’s reasonable handling and return shipping charges for any product that is not packaged and shipped in accordance with the foregoing requirements, or that is determined by D-Link not to be defective or non-conforming.

**What Is Not Covered:** This limited warranty provided by D-Link does not cover: Products, if in D-Link’s judgment, have been subjected to abuse, accident, alteration, modification, tampering, negligence, misuse, faulty installation, lack of reasonable care, repair or service in any way that is not contemplated in the documentation for the product, or if the model or serial number has been altered, tampered with, defaced or removed; Initial installation, installation and removal of the product for repair, and shipping costs; Operational adjustments covered in the operating manual for the product, and normal maintenance; Damage that occurs in shipment, due to act of God, failures due to power surge, and cosmetic damage; Any hardware, software, firmware or other products or services provided by anyone other than D-Link; Products that have been purchased from inventory clearance or liquidation sales or other sales in which D-Link, the sellers, or the liquidators expressly disclaim their warranty obligation pertaining to the product. Repair by anyone other than D-Link or an Authorized D-Link Service Office will void this Warranty.

**Disclaimer of Other Warranties:** EXCEPT FOR THE LIMITED WARRANTY SPECIFIED HEREIN, THE PRODUCT IS PROVIDED “AS-IS” WITHOUT ANY WARRANTY OF ANY KIND WHATSOEVER INCLUDING, WITHOUT LIMITATION, ANY WARRANTY OF MERCHANTABILITY, FITNESS FOR A PARTICULAR PURPOSE AND NON-INFRINGEMENT. IF ANY IMPLIED WARRANTY CANNOT BE DISCLAIMED IN ANY TERRITORY WHERE A PRODUCT IS SOLD, THE DURATION OF SUCH IMPLIED WARRANTY SHALL BE LIMITED TO NINETY (90) DAYS. EXCEPT AS EXPRESSLY COVERED UNDER THE LIMITED WARRANTY PROVIDED HEREIN, THE ENTIRE RISK AS TO THE QUALITY, SELECTION AND PERFORMANCE OF THE PRODUCT IS WITH THE PURCHASER OF THE PRODUCT.

# Warranty (continued)

**Limitation of Liability:** TO THE MAXIMUM EXTENT PERMITTED BY LAW, D-LINK IS NOT LIABLE UNDER ANY CONTRACT, NEGLIGENCE, STRICT LIABILITY OR OTHER LEGAL OR EQUITABLE THEORY FOR ANY LOSS OF USE OF THE PRODUCT, INCONVENIENCE OR DAMAGES OF ANY CHARACTER, WHETHER DIRECT, SPECIAL, INCIDENTAL OR CONSEQUENTIAL (INCLUDING, BUT NOT LIMITED TO, DAMAGES FOR LOSS OF GOODWILL, LOSS OF REVENUE OR PROFIT, WORK STOPPAGE, COMPUTER FAILURE OR MALFUNCTION, FAILURE OF OTHER EQUIPMENT OR COMPUTER PROGRAMS TO WHICH D-LINK'S PRODUCT IS CONNECTED WITH, LOSS OF INFORMATION OR DATA CONTAINED IN, STORED ON, OR INTEGRATED WITH ANY PRODUCT RETURNED TO D-LINK FOR WARRANTY SERVICE) RESULTING FROM THE USE OF THE PRODUCT, RELATING TO WARRANTY SERVICE, OR ARISING OUT OF ANY BREACH OF THIS LIMITED WARRANTY, EVEN IF D-LINK HAS BEEN ADVISED OF THE POSSIBILITY OF SUCH DAMAGES. THE SOLE REMEDY FOR A BREACH OF THE FOREGOING LIMITED WARRANTY IS REPAIR, REPLACEMENT OR REFUND OF THE DEFECTIVE OR NON-CONFORMING PRODUCT. THE MAXIMUM LIABILITY OF D-LINK UNDER THIS WARRANTY IS LIMITED TO THE PURCHASE PRICE OF THE PRODUCT COVERED BY THE WARRANTY. THE FOREGOING EXPRESS WRITTEN WARRANTIES AND REMEDIES ARE EXCLUSIVE AND ARE IN LIEU OF ANY OTHER WARRANTIES OR REMEDIES, EXPRESS, IMPLIED OR STATUTORY

**Governing Law:** This Limited Warranty shall be governed by the laws of the State of California. Some states do not allow exclusion or limitation of incidental or consequential damages, or limitations on how long an implied warranty lasts, so the foregoing limitations and exclusions may not apply. This limited warranty provides specific legal rights and the product owner may also have other rights which vary from state to state.

**Trademarks:** D-Link is a registered trademark of D-Link Systems, Inc. Other trademarks or registered trademarks are the property of their respective manufacturers or owners.

**Copyright Statement:** No part of this publication or documentation accompanying this Product may be reproduced in any form or by any means or used to make any derivative such as translation, transformation, or adaptation without permission from D-Link Corporation/D-Link Systems, Inc., as stipulated by the United States Copyright Act of 1976. Contents are subject to change without prior notice. Copyright® 2005 by D-Link Corporation/D-Link Systems, Inc. All rights reserved.

**CE Mark Warning:** This is a Class B product. In a domestic environment, this product may cause radio interference, in which case the user may be required to take adequate measures.

**FCC Statement:** This equipment has been tested and found to comply with the limits for a Class B digital device, pursuant to part 15 of the FCC Rules. These limits are designed to provide reasonable protection against harmful interference in a residential installation. This equipment generates, uses, and can radiate radio frequency energy and, if not installed and used in accordance with the instructions, may cause harmful interference to radio communication. However, there is no guarantee that interference will not occur in a particular installation. If this equipment does cause harmful interference to radio or television reception, which can be determined by turning the equipment off and on, the user is encouraged to try to correct the interference by one or more of the following measures:

- Reorient or relocate the receiving antenna.
- Increase the separation between the equipment and receiver.
- Connect the equipment into an outlet on a circuit different from that to which the receiver is connected.
- Consult the dealer or an experienced radio/TV technician for help.

# Registration

**Register your product online at:  
<http://support.dlink.com/register>**



Product registration is entirely voluntary and failure to complete or return this form will not diminish your warranty rights.