

# D-Link<sup>®</sup> Quick Installation Guide

This product can be set up using any current Web browser, i.e., Internet Explorer 6.0 or Netscape Navigator 7.0



**DCS-900W**  
2.4GHz Wireless  
Internet Camera

## Before You Begin

You must have at least the following:

- 802.11b Wireless Router or 10/100Mbps Wired Router or Switch
- CD-ROM Drive

## Check Your Package Contents

These are the items included with your purchase:

If any of the below items are missing, please contact your reseller.



DCS-900W Internet Camera



CD-ROM with Manual and Software



Camera Stand



Antenna



CAT5 Ethernet Cable



AC Power Adapter

# System Requirements

- Java Enabled and Compliant Web Browser
- CPU: Pentium III, 850MHz or above
- Memory Size: 128MB
- VGA card resolution: 800x600 or above
- Existing 10/100 Mbps Ethernet-Based Network or 802.11b Wireless Network (802.11b Compliant Access Point or 802.11b Compliant Router)

## 1

## Hardware Installation

### Attach the Antenna

Locate the antenna included with your DCS-900W and attach it to the antenna connector located on the back of the DCS-900W.



### Attach the Swivel Stand

Locate the stand mount on the bottom panel of the DCS-900W and screw on the swivel stand to the base of the DCS-900W.



### Connect the Ethernet Cable

Connect the included Ethernet cable to the network cable connector located on the back panel of the DCS-900W and attach it to the network. Network Connectivity is confirmed when the orange LED Indicator on the DCS-900W located below the Power LED is illuminated.



### Attach the External Power Supply

Attach the external power supply to the DC power input connector located on the rear panel of the DCS-900W and connect it to your local power supply. *Note:* Power source is confirmed when the green LED Power Indicator located to the right of the lens on the DCS-900W is illuminated.



# 2

## Running the Setup Wizard

You are now ready to run the Setup Wizard, which will guide you quickly through the installation process.

Insert the **D-Link DCS-900W** Driver CD into your CD-ROM drive.

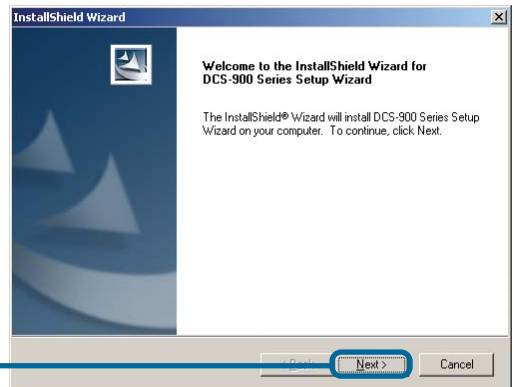
Click **Install Software**



Click **Install Wizard**

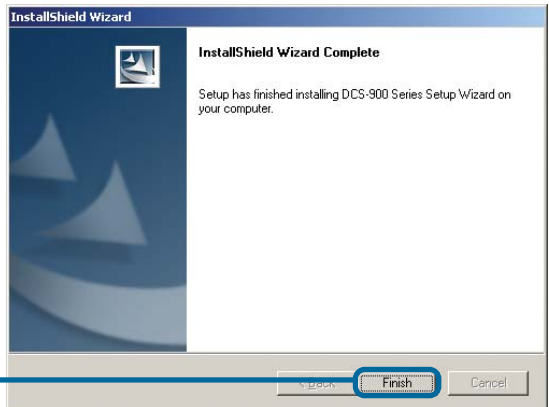
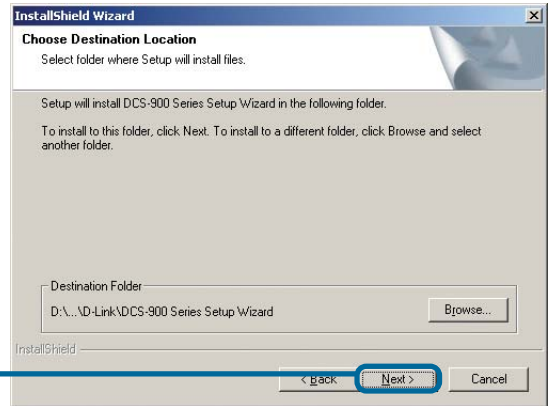
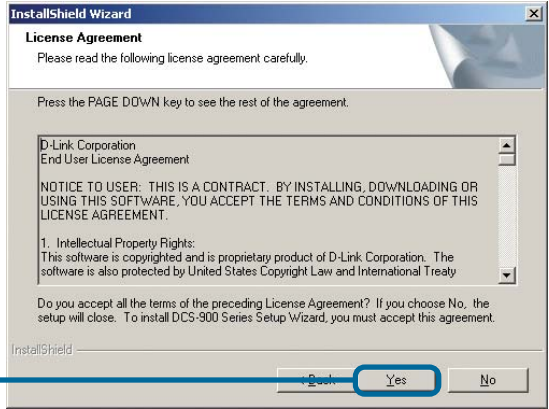


Click **Next**



# 2

## Running the Setup Wizard (continued)



# 2

## Running the Setup Wizard (continued)

To run the Setup Wizard, click on: **Start->Programs->DCS-900 Series SetupWizard.**

Your camera's IP Address will be displayed here if it is valid.

Click **Wizard** to begin



You must change the **Admin ID** and **Password** immediately to protect your camera against unauthorized access. By default, the Admin ID and Password are blank. To change the Admin ID and Password, select both **Change** boxes and enter a **New ID** and **New Password**.

Click **Next**



# 2

## Running the Setup Wizard (continued)

Enter an **IP Address** and **Subnet Mask** for your camera. Enter your **Gateway** and **DNS** settings. These settings must correspond with your network settings for you to access the camera. If you are unsure of what these settings should be, check with your network administrator.

D-Link Building Networks for People

### Setup Wizard

#### Set IP Address

IP Address	<input type="text" value="192.168.0.20"/>
Subnet Mask	<input type="text" value="255.255.255.0"/>
Default Gateway	<input type="text" value="192.168.0.1"/>
DNS 1	<input type="text" value="192.152.81.1"/>
DNS 2	<input type="text" value="4.2.2.2"/>

Back Next Exit

Click **Next**

The **Connection Mode** depends on how your camera is connected to your network. Click **Infrastructure** for use with a router or **Adhoc** for a peer-to-peer connection. The **Network Name**, **Wireless Channel**, and **Encryption Keys** MUST correspond with your wireless network settings for the camera to work.

D-Link Building Networks for People

### Setup Wizard

#### Wireless Interface

Connection Mode :  Infrastructure  
 Adhoc

Network Name (SSID) :

Wireless Channel :

Old Encryption WEP Key :   ASCII  HEX

Change Encryption WEP Key

New Encryption WEP Key :

Reconfirm WEP Key :

Back Next Exit

Click **Next**

# 2

## Running the Setup Wizard (continued)

If you need to make any changes, click **Back** to modify your settings. Otherwise, click **Restart** to save and apply your settings.

The screenshot shows the D-Link Setup Wizard configuration screen. The title bar includes the D-Link logo and the text "Building Networks for People". The main heading is "Setup Wizard". Below this, there are several input fields for configuration:

- Admin ID :
- Password :
- IP Address :
- Subnet :
- DNS 1 :
- DNS 2 :

Below the input fields, a message states: "The Setup Wizard has completed. Click on **Back** to modify your settings. Click **Restart** to save your current settings and reboot the DCS-900 Series Camera." At the bottom right, there are two buttons: "Back" (with a left arrow icon) and "Restart" (with a circular refresh icon).

Click **Restart**

Your setup is now complete! Click **Link** to launch your web browser and view your images.

The screenshot shows the D-Link Setup Wizard completion screen. The title bar includes the D-Link logo and the text "Building Networks for People". The main heading is "Setup Wizard". On the left side, there is a vertical menu with five buttons: "Wizard", "Search", "Link", "Exit", and "About". The "Link" button is highlighted. On the right side, there is a table with the following data:

Mac Address	Current IP Address	Assigned
00 00 88 73 4C BB	192.168.0.20	

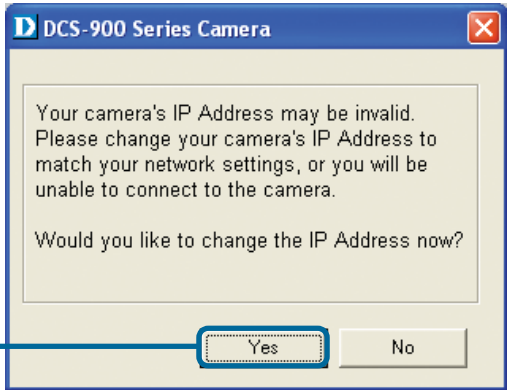
Click **Link**

# 2

## Running the Setup Wizard (continued)

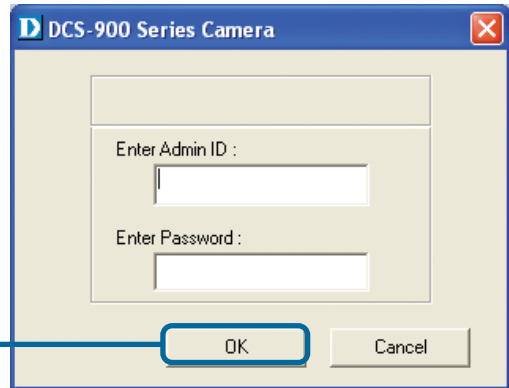
This screen appears if the default IP Address of the camera (192.168.0.20) does not correspond with your local area network settings. You must assign an IP address for your camera that corresponds to your network's IP addressing scheme.

Click **Yes**



By default, the **Admin ID** and **Password** are blank. If you are running this Setup Wizard for the first time, leave both **Admin ID** and **Password** fields blank and simply click OK to continue.

Click **OK**



The **IP Address** of your camera must correspond with your network settings for you to access the camera. If you are unsure of what these settings should be, please check with your network administrator.

Click **OK**



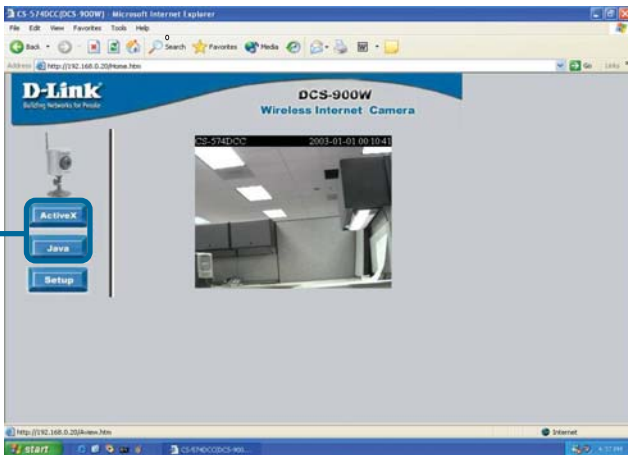


# 3

## Viewing the Streaming Video

The Home screen of your camera can be accessed from the Setup Wizard using the **Link** button. You can also use your favorite Web browser, type “**http://address**” in the address box where **address** is the IP address that you assigned to the DCS-900W from the previous section. Press **Enter**.

Click **Active X** or **Java** to view your video images.



# 4

## Tips

- If you are installing several cameras, it is recommended to use one computer to configure all of them before you install them in your planned locations. To avoid IP address conflict, use 192.168.0.20 for the LAST camera that you plan on installing.
- Make sure that you have the latest version of Java installed on your computer to ensure proper operation when viewing the video in Java mode. Java can be downloaded for free from Sun’s web site. (<http://www.java.com>)
- The Xplug Control is included with the DCS-900W and should be installed on your computer if you want to use Active X to view your video images instead of Java. The Xplug Control must be installed on your computer if you are using the remote monitoring software. Please refer to the Manual included on this CD-ROM for detailed information on installing the Xplug Control to your computer for use with the software.
- Please refer to the Manual located on the CD-ROM for additional information regarding all features and instructions related to the DCS-900W.

# Notes

# Notes

# Technical Support

You can find software updates and user documentation on the D-Link website.

D-Link provides free technical support for customers within the United States and within Canada for the duration of the warranty period on this product.

U.S. and Canadian customers can contact D-Link Technical Support through our website, or by phone.

## Tech Support for customers within the United States:

### ***D-Link Technical Support over the Telephone:***

(877) 453-5465

24 hours a day, seven days a week.

### ***D-Link Technical Support over the Internet:***

<http://support.dlink.com>

email:[support@dlink.com](mailto:support@dlink.com)

## Tech Support for customers within Canada:

### ***D-Link Technical Support over the Telephone:***

(800) 361-5265

Monday to Friday 7:30am to 12:00am EST

### ***D-Link Technical Support over the Internet:***

<http://support.dlink.ca>

email:[support@dlink.ca](mailto:support@dlink.ca)

