

D-Link Quick Installation Guide

This product can be used with:
Windows XP, Me, 2000, 98SE



DSB-C310
D-Link VisualStream™
300K Pixel USB PC Camera

Before You Begin

You must have at least the following:

- Windows XP/Me/2000/98SE
- One available USB Port
- CD-ROM Drive

Check Your Package Contents

These are the items included with your purchase:

If any of the below items are missing, please contact your reseller.



• DSB-C310 USB PC Camera



• CD-ROM
(containing Drivers, PDF Installation Guide,
PDF Manual, and Warranty)



Run the Driver CD before you install the PC Camera. The Driver CD contains an installation program that simplifies your installation process.

1 Insert the D-Link CD-ROM Into Your Computer

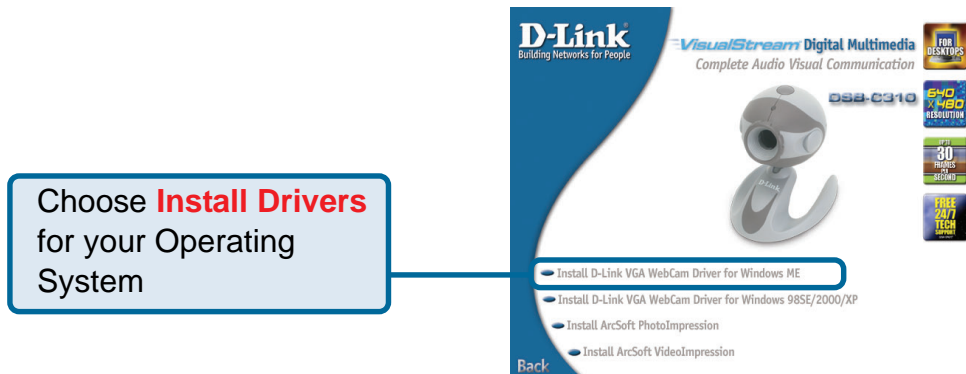
Turn on your computer and Insert the D-Link VisualStream™ DSB-C310 Driver CD in the CD-ROM drive.

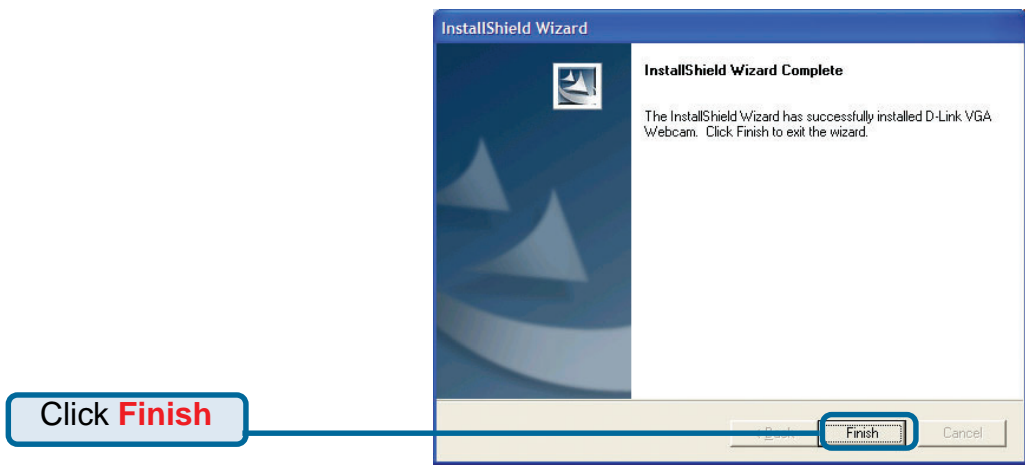
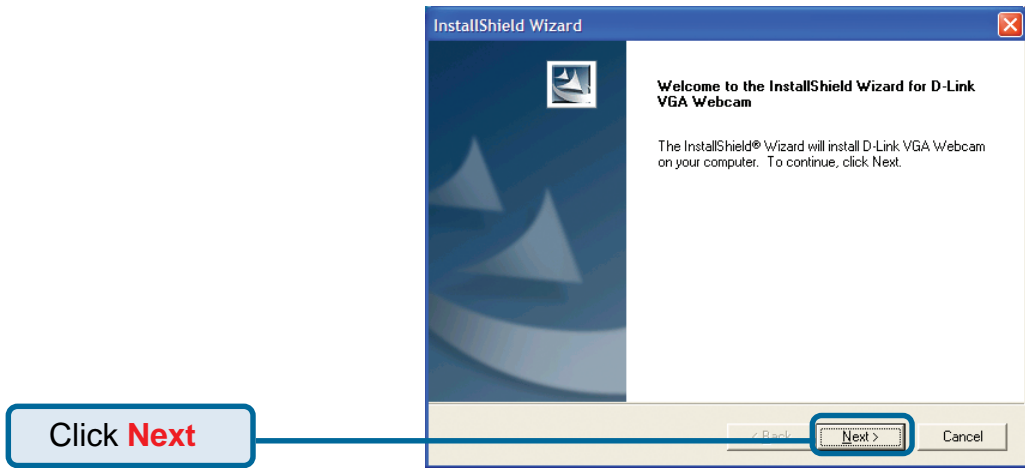


Do **NOT** install the PC Camera into your PC before installing the driver software on the D-Link CD!



If the Autorun screen does not automatically start, click on **Start > Run**, enter "**D:\Autorun.exe**" and click **OK**. "**D**" represents the letter of your CD-ROM drive. Replace it if your CD-ROM drive is a different letter.





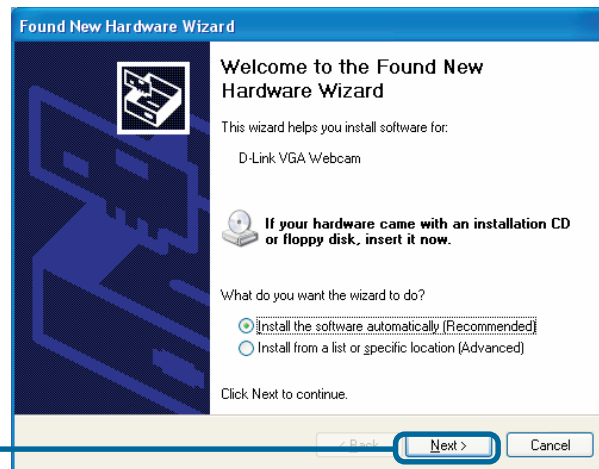
2 Connect the Camera To Your Windows-based Computer

With your computer ON, **Connect the PC Camera** to an available USB port on your USB host adapter or USB hub. (You may also use a USB extension cable for easy access)

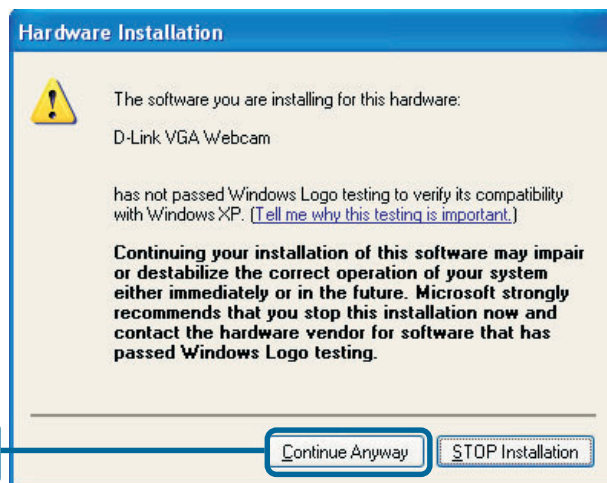
Windows XP Users

Follow these steps to complete installation .

Click **Next**



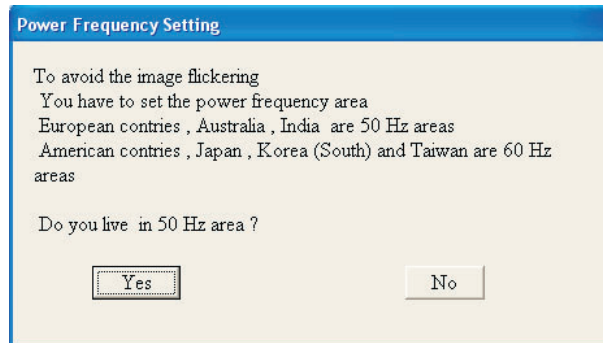
Click **Continue Anyway**



2

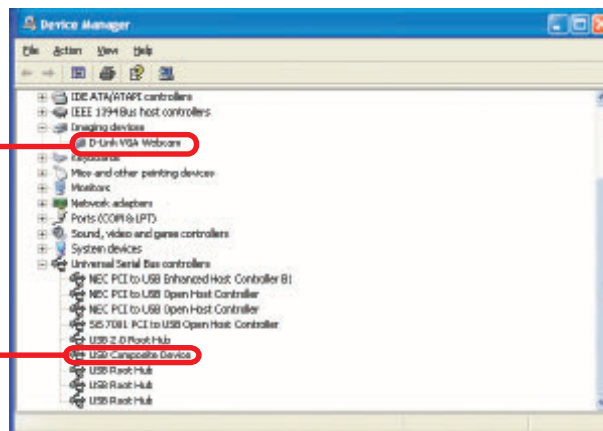
Connect the Camera To Your Windows-based Computer (continued)

Choose your region to reduce image flickering.



Click **Finish**

To verify installation, right-click on **My Computer > Hardware > Device Manager** and the VGA Camera will show up in 2 places: **Imaging Device** and under **USB Controller**



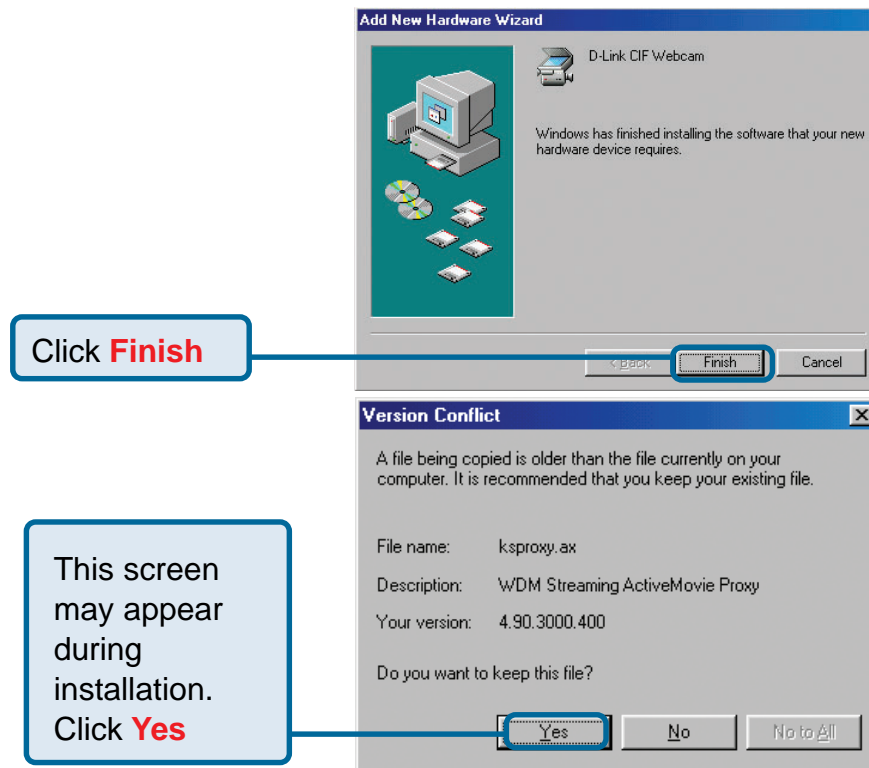
Windows 2000 & ME Users

The DSB-C310 driver installation will proceed automatically for Windows 2000 & Me users.

Windows 98SE Users

The image displays four sequential screenshots of the Windows 98SE 'Add New Hardware Wizard' with callouts indicating the 'Next' button to click in each step:

- Step 1:** The wizard searches for new drivers for a USB Device. A callout box says "Click **Next**" pointing to the "Next >" button.
- Step 2:** The wizard asks "What do you want Windows to do?". The "Search for the best driver for your device. (Recommended)" option is selected. A callout box says "Click **Next**" pointing to the "Next >" button.
- Step 3:** The wizard shows search locations. "CD-ROM drive" is checked. A callout box says "Click **Next**" pointing to the "Next >" button.
- Step 4:** The wizard shows the search results: "D-Link CIF Webcam" with driver file "F:\CIF_WE*\5D-LINK.INF". A callout box says "Click **Next**" pointing to the "Next >" button.



3 The Installation is Complete!

Once properly installed, you are ready to start immediately capturing images and creating video with the DSB-C310.

Please refer to the DSB-C310 Manual on the CD included with this product for information on how to install and use the ArcSoft VideoImpression and ArcSoft PhotoImpression software.

Technical Support

You can find software updates and user documentation on the D-Link website.

D-Link provides free technical support for customers within the United States and within Canada for the duration of the warranty period on this product.

U.S. and Canadian customers can contact D-Link Technical Support through our website, or by phone.

Tech Support for customers within the United States:

D-Link Technical Support over the Telephone:

(877) 453-5465

24 hours a day, seven days a week.

D-Link Technical Support over the Internet:

<http://support.dlink.com>

[email:support@dlink.com](mailto:support@dlink.com)

Tech Support for customers within Canada:

D-Link Technical Support over the Telephone:

(800) 361-5265

Monday to Friday 8:30am to 9:00pm EST

D-Link Technical Support over the Internet:

<http://support.dlink.ca>

[email:support@dlink.ca](mailto:support@dlink.ca)

