

D-Link[®]
Building Networks for People



Install Guide

Version 2.0

DSM-G600

Wireless Network Storage Enclosure

System Requirements

- Computer with Windows® XP or 2000
- Internet Explorer 6.0 or Netscape® Navigator 7.0 and above
- An 802.11g/b wireless network
- USB Hard Drive and/or Internal 3.5" PATA/IDE Hard Drive
- An available Ethernet port on the network*

* It is required that an Ethernet cable is used during initial setup. Once your wireless configuration is set, you may disconnect the Ethernet cable and begin communicating wirelessly with your DSM-G600.

Package Contents



D-Link DSM-G600
Wireless Storage Enclosure



Manual and Software
on CD



Ethernet Cable

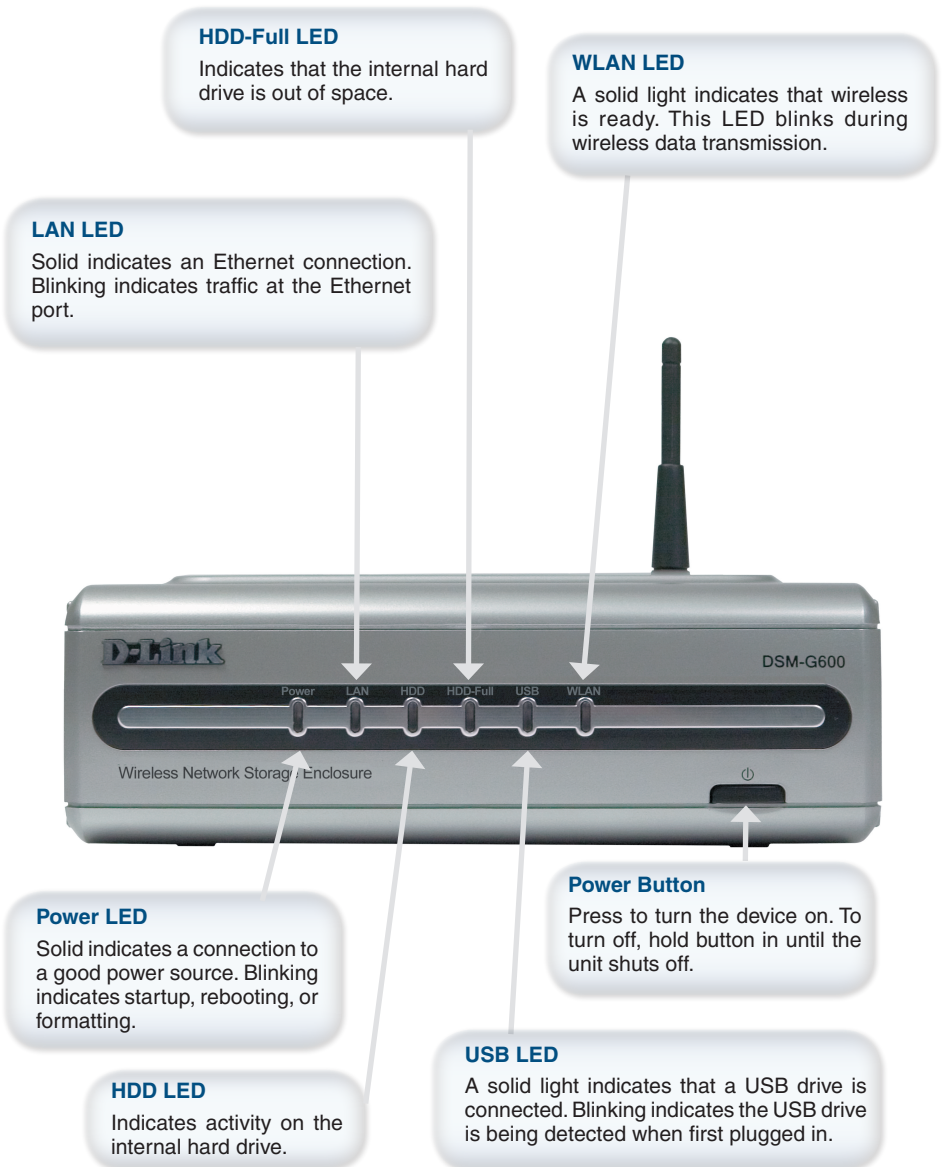


12V 3A Power Supply

Note: Using a power supply with a different voltage will cause damage and void the warranty for this product.

If any of the above items are missing, please contact your reseller.

Front Panel



Rear Panel

Antenna

Connects to a wireless network.

Reset Button

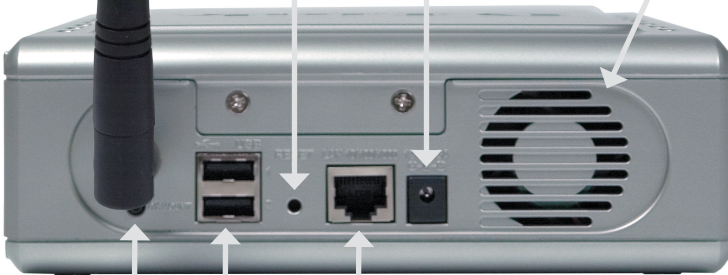
Pressing the reset button for 10 seconds with a paper clip will restore the unit to the original factory default settings. The button is inside the hole to prevent an accidental reset.

Power Receptor

Receptor for the supplied power adapter.

Fan/Vent

Fan to cool the internal hard drive.

**Dismount Button**

Press to safely remove USB drives from the DSM-G600.

LAN Port

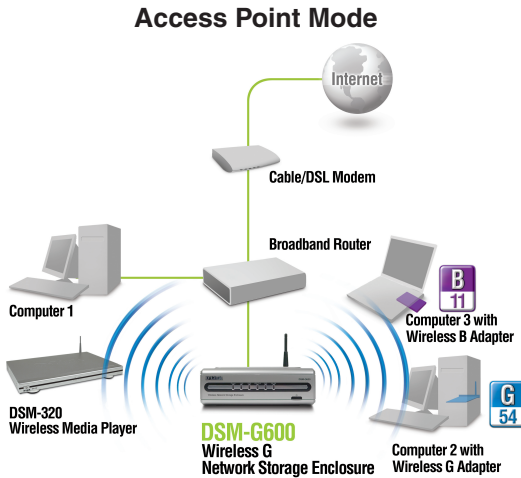
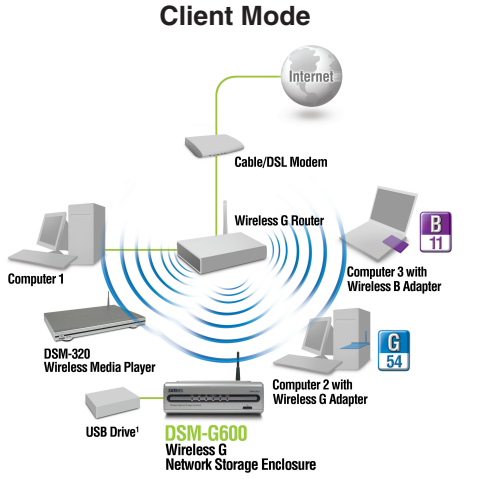
Connects to your Ethernet network. The LAN port supports Auto MDI/MDI-X, allowing you to connect a straight-through or crossover cable.

USB 2.0 Ports

Use these ports to connect USB 2.0 drives. USB 1.1 drives may also be connected but will be limited to USB 1.1 speed.

Installation Overview

Once you've completed your DSM-G600 installation, your network may appear similar to the diagram below.



Installing the Hardware

- A.** Unscrew the two screws on the back panel of the DSM-G600 to remove the cover.



- B.** Connect the IDE cable to the IDE cable connector on your hard drive.

Note: Make sure the jumper setting on your hard drive is set to *Master* or *Cable Select*.



- C.** Connect the power cable to the power connector on your hard drive.

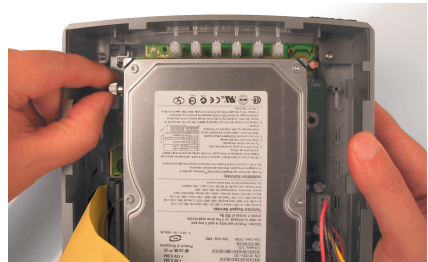


Installing the Hardware (continued)

- D.** While facing the back of the DSM-G600, insert the right side of the hard drive into the case. Once in place, snap down the left side.



- E.** Use the mounting screw to secure the hard drive to the DSM-G600. Replace the cover and screw the two screws on the back panel of the DSM-G600.



- F.** Connect an Ethernet cable to the Ethernet port located on the back of the DSM-G600.



Note: It is required that an Ethernet cable is used during initial setup. Once your wireless configuration is set, you may disconnect the Ethernet cable and begin communicating wirelessly with your DSM-G600.

Installing the Hardware (continued)

- G.** Connect the antenna to the antenna connector located on the back of the DSM-G600.



- H.** Connect the power adapter to the power receptor on the back panel. Then plug the other end of the power adapter into a wall outlet or power strip. The Power LED will turn on to indicate proper operation.



Note: When you first power on, the DSM-G600 will offer to format your hard drive if it is unformatted. This process may take several minutes depending on the size of your hard drive. During this process, the power LED will blink. Once the power LED is solid, you may then access the web based configuration of the DSM-G600. Do not power the unit off during this process.

Wireless Installation Considerations

The DSM-G600 lets you access your stored data and media files using a wireless connection from virtually anywhere within the operating range of your wireless network. Keep in mind, however, that the number, thickness and location of walls, ceilings, or other objects that the wireless signals must pass through, may limit the range. Typical ranges vary depending on the types of materials and background RF (radio frequency) noise in your home or business. The key to maximizing wireless range is to follow these basic guidelines:

- 1** Keep the number of walls and ceilings between the DSM-G600 and other network devices to a minimum - each wall or ceiling can reduce your DSM-G600's range from 3-90 feet (1-30 meters.) Position your devices so that the number of walls or ceilings is minimized.
- 2** Be aware of the direct line between network devices. A wall that is 1.5 feet thick (.5 meters), at a 45-degree angle appears to be almost 3 feet (1 meter) thick. At a 2-degree angle it looks over 42 feet (14 meters) thick! Position devices so that the signal will travel straight through a wall or ceiling (instead of at an angle) for better reception.
- 3** Building Materials make a difference. A solid metal door or aluminum studs may have a negative effect on range. Try to position access points, wireless routers, and computers so that the signal passes through drywall or open doorways. Materials and objects such as glass, steel, metal, walls with insulation, water (fish tanks), mirrors, file cabinets, brick, and concrete will degrade your wireless signal.
- 4** Keep your product away (at least 3-6 feet or 1-2 meters) from electrical devices or appliances that generate RF noise.
- 5** If you are using 2.4GHz cordless phones or X-10 (wireless products such as ceiling fans, lights, and home security systems), your wireless connection may degrade dramatically or drop completely. Make sure your 2.4GHz phone base is as far away from your wireless devices as possible. The base transmits a signal even if the phone is not in use.

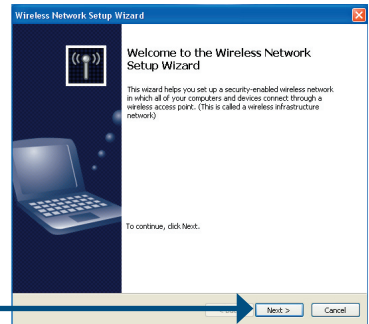
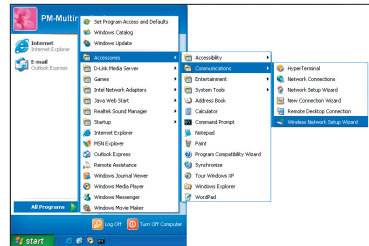
Windows® Connect Now (WCN)

Note: This feature is only available through Windows® XP with Service Pack 2 installed.

In this section, you will learn how to use the Wireless Network Setup Wizard to easily and securely set up the DSM-G600 on a wireless network. You will need to have a USB flash drive available to complete the WCN wireless setup on the DSM-G600.

If you do not have Windows® XP with Service Pack 2 or do not wish to use WCN, skip to page 13.

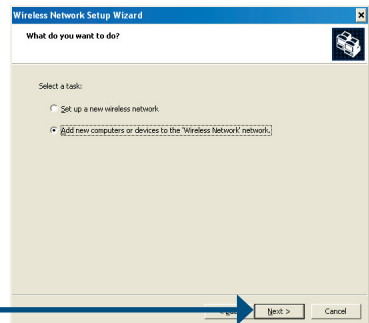
Click **Start** > **Accessories** > **Communications** > **Wireless Network Setup Wizard**.



Click **Next**.

If you have already used WCN to configure other wireless devices on your network and would like to use the same settings on your DSM-G600, click **Add new computers or devices to the 'Wireless Network' network** and skip to the middle step on page 12.

To create new wireless settings, click **Setup a new wireless network**.



Click **Next**.

Windows® Connect Now (Continued)

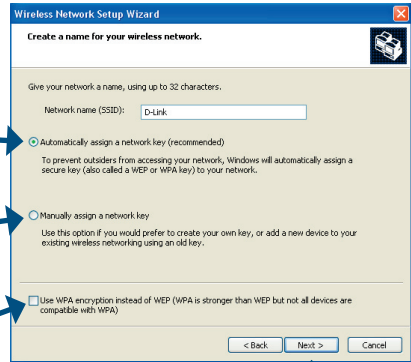
Enter the **Network Name (SSID)**.

If you want Windows to assign a random network key (encryption key), select **Automatically assign a network key**.

If you want to manually assign a network key, select **Manually assign a network key**.

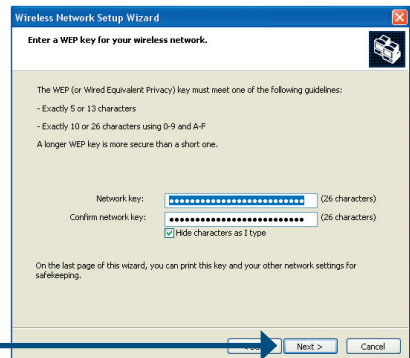
To use WPA-PSK, select **Use WPA Encryption instead of WEP**.

Click **Next**.



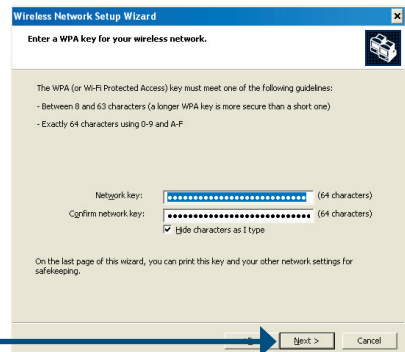
This screen appears if you choose to set the WEP key manually. Enter the desired encryption key in the space provided and then enter the key again to confirm.

Click **Next**.



This screen appears if you choose to set the WPA key manually. Enter the desired encryption key in the space provided and then enter the key again to confirm.

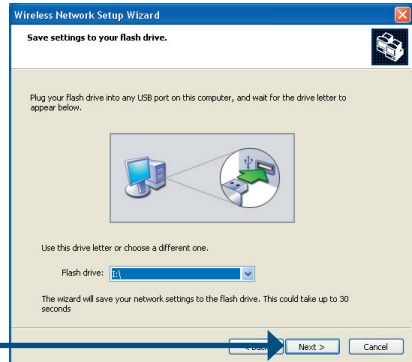
Click **Next**.



Windows® Connect Now (Continued)

This screen appears when the WEP or WPA key has been assigned. Follow the directions on the screen to transfer settings to the USB flash drive.

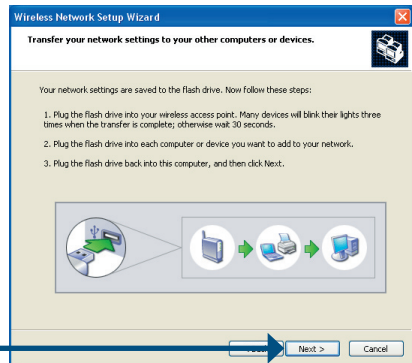
Click **Next**.



This screen appears after the settings are successfully transferred to the USB flash drive. Follow the directions on the screen.

When inserting the USB flash drive into the USB port on the DSM-G600, the USB LED will blink slowly as it detects the USB flash drive and then turn off. The USB LED will then quickly blink 3 times and turn off again. Once the USB light is solid and the WLAN LED blinks, you may unplug the USB flash drive.

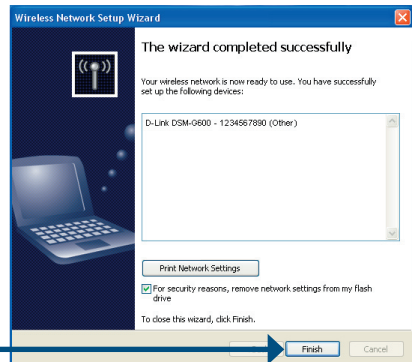
Click **Next**.



When the DSM-G600 wireless setup is successful, a window similar to this one will appear.

You have completed the wireless configuration of the DSM-G600.

Click **Finish**.

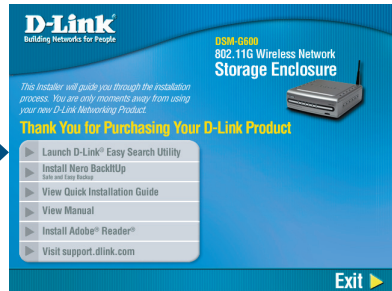


Your wireless setup using WCN is now complete.

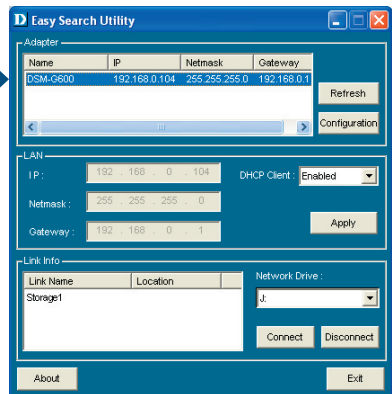
Configuration

To access the web-based configuration, insert the DSM-G600 CD into your CD-ROM drive.

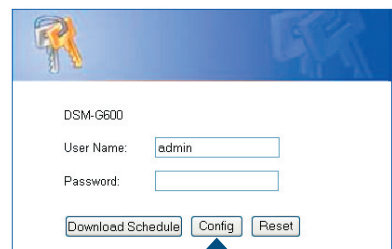
Click **Launch D-Link Easy Search Utility**.



Highlight an available DSM-G600 and click **Configuration** to access the web-based utility.



Type **admin** for the user name and leave the password field blank.



Click **Config**.

Configuration (continued)

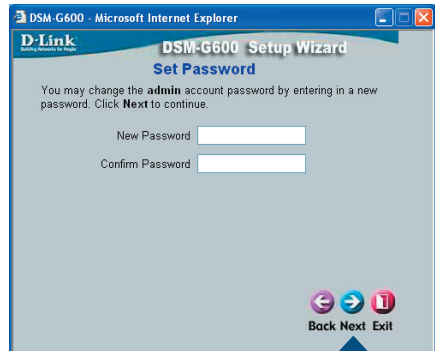
Click on **Run Wizard**.

The Wizard will guide you through five steps:

- Password
- Time Zone
- LAN Settings
- Additional Settings
- Wireless Configuration

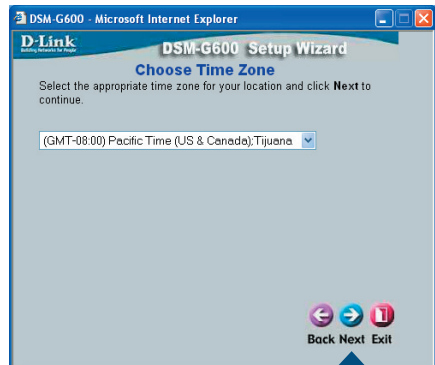


Click **Next**.



Enter and confirm a new **password**.

Click **Next**.



Select the appropriate **Time Zone** in the pulldown menu.

Click **Next**.

Configuration (continued)

Select either Static or Dynamic IP address. When Static is selected, you will fill in these fields:

Static IP Address

Subnet Mask

Gateway Address - Usually the LAN address of your router.

DNS Address - A Domain Name Server translates Domain names into IP addresses.

Select **DHCP Client** when you have a DHCP server in your network. No other configuration is required on this screen when Dynamic IP address is selected.

Click **Next**.

Enter the **Workgroup** name, a **Name** for the DSM-G600 (useful if you have multiple storage enclosures on your network), and a **Description**.

Click **Next**.

In **Wireless Mode**, select **Client** or **Access Point** mode. Select **Enable** to use the wireless function or **Disable** to turn wireless off.

Select **Client** if you will be connecting to an existing wireless router or access point. Select **Access Point** if wireless clients will be connecting directly to the DSM-G600.

Configuration (continued)

If you have configured the wireless settings using Windows® Connect Now (WCN), click Next on the following screen without any configuration changes. Refer to page 10 for WCN setup instructions.

Note: The DSM-G600 cannot bridge or extend a wireless network via wireless. Plugging the unit into a router, switch, or hub using an Ethernet cable will allow you to create a wireless network or segment.

When selecting **Client** mode, you will need to choose the connection mode:
Infrastructure - Connect to an access point or wireless router.
Ad-Hoc - Connect to a wireless client directly such as a laptop with a wireless adapter.
 Skip to page 18 for **Access Point** mode.

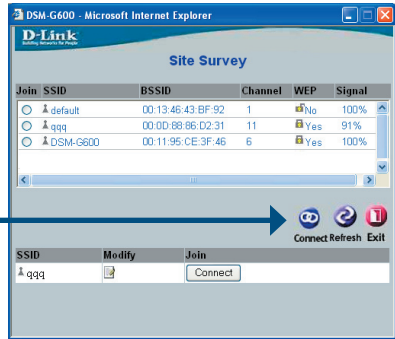
Click **Site Survey** to select a network from a list of available wireless networks or you may enter the wireless settings manually. The SSID must be the same for all devices in the network.



Click **Next**.

Click the radio button next to the wireless network you want to connect to.

Click **Connect**.



Configuration (continued)

If you select WEP, enter the same encryption settings as your wireless router or access point.

Security Mode - Select WEP.

Authentication - Select Open or Shared.

Encryption Mode - Select the level of encryption (64 or 128-bit).

Key Format - Select Hex or ASCII.

Default Key - Select which key you want to use.

Key (1-4) - Enter your WEP key. You may enter up to 4 different keys.

DSM-G600 - Microsoft Internet Explorer

D-Link
DSM-G600 Setup Wizard

Set Wireless LAN Connection

Mode: Access Point Client

Wireless: Enable Disable

Connection Mode: Infrastructure Ad-Hoc

SSID: EXAMPLE

Wireless Mode: 802.11b/g-2.4GHz

Security Mode: WEP

Authentication: Open Shared

Encryption Mode: 64Bit

Key Format: HEX

Default Key: Key_1

Key1: 1234567890

Key2:

Key3:

Key4:

Pre-Shared Key:

Input 10 HEX characters (0-9a-fA-F).

Click **Next**.

If you select WPA-PSK, enter the same encryption settings as your wireless router or access point.

Security Mode - Select WPA-PSK.

Pre-Shared Key - Enter the WPA passphrase used on your network.

DSM-G600 - Microsoft Internet Explorer

D-Link
DSM-G600 Setup Wizard

Set Wireless LAN Connection

Mode: Access Point Client

Wireless: Enable Disable

Connection Mode: Infrastructure Ad-Hoc

SSID: EXAMPLE

Wireless Mode: 802.11b/g-2.4GHz

Security Mode: WPA_PSK

Authentication: Open Shared

Encryption Mode: TKIP

Key Format: ASCII

Default Key: Key_1

Key1: 1234567890

Key2:

Key3:

Key4:

Pre-Shared Key: EXAMPLEPSK

Input 8-63 printable ASCII characters.

Click **Next**.

For more information on WEP and WPA security, please refer to section on **Wireless Security** in your manual located on the D-Link CD-ROM.

Skip to page 20 to continue your Client setup.

Configuration (continued)

When selecting **Access Point** mode, you will need to enter the following network settings:

SSID - Enter the SSID or network name.

Channel - Select the channel of your wireless network (1-11).

802.11g Only Mode - Select Enabled if all your wireless devices are 802.11g, otherwise select Disabled.

SSID Broadcast - Select Enabled to allow your SSID to be seen by any wireless device.

Security - Select to enable WEP, WPA, or WPA-PSK security.

Click **Next**.

DSM-G600 - Microsoft Internet Explorer

D-Link DSM-G600 Setup Wizard

Set Wireless LAN Connection

Mode: Access Point Client

Wireless: Enable Disable

SSID: EXAMPLE

Channel: 1 Auto Select

802.11g Only Mode: Enabled Disabled

SSID Broadcast: Enabled Disabled

Security: None

Authentication: Open Shared

Encryption: None

Key Format: ASCII

Default Key: Key_1

Key1: _____

Key2: _____

Key3: _____

Key4: _____

Back Next Exit

If you select WEP, enter the following settings:

Security Mode - Select WEP.

Authentication - Select Shared.

Encryption Mode - Select the level of encryption (64 or 128-bit).

Key Format - Select Hex or ASCII.

Default Key - Select which key you want to use.

Key (1-4) - Enter your WEP key. You may enter up to 4 different keys.

Enter the same settings on your wireless clients.

Click **Next**.

DSM-G600 - Microsoft Internet Explorer

D-Link DSM-G600 Setup Wizard

Set Wireless LAN Connection

Mode: Access Point Client

Wireless: Enable Disable

SSID: EXAMPLE

Channel: 1 Auto Select

802.11g Only Mode: Enabled Disabled

SSID Broadcast: Enabled Disabled

Security: WEP

Authentication: Open Shared

Encryption: 64Bit

Key Format: HEX

Default Key: Key_1

Key1: 1234567890

Key2: _____

Key3: _____

Key4: _____

Input 10 HEX characters (0-9,a-f,A-F).

Back Next Exit

Configuration (continued)

If you select WPA-PSK, enter the following settings:

Security Mode - Select WPA-PSK.

Encryption - Select TKIP or AES.

Pre-Shared Key - The key or passphrase is an alpha-numeric password between 8 and 63 characters long. The passphrase can include symbols (!?*&_) and spaces. Make sure you enter this key exactly the same on your wireless clients.

DSM-G600 - Microsoft Internet Explorer

D-Link DSM-G600 Setup Wizard

Set Wireless LAN Connection

Mode: Access Point Client

Wireless: Enable Disable

SSID: EXAMPLE

Channel: 1 Auto Select

802.11g Only Mode: Enabled Disabled

SSID Broadcast: Enabled Disabled

Security: WPA-PSK

Encryption: TKIP

Key Format: ASCII

Pre-Shared Key: EXAMPLEPSK

Pre-Shared Key Confirmed: EXAMPLEPSK

Input 8-63 printable ASCII characters.

Back Next Exit

Click **Next**.

If you select WPA, enter the following information:

Encryption - Select TKIP or AES.

RADIUS Server IP - Enter the IP address of your RADIUS server.

Port - Enter the port used.

Shared Secret - Enter the key used.

This key will need to be exactly the same on your clients.

DSM-G600 - Microsoft Internet Explorer

D-Link DSM-G600 Setup Wizard

Set Wireless LAN Connection

Mode: Access Point Client

Wireless: Enable Disable

SSID: EXAMPLE

Channel: 1 Auto Select

802.11g Only Mode: Enabled Disabled

SSID Broadcast: Enabled Disabled

Security: WPA

Encryption: TKIP

Key Format: ASCII

802.1X RADIUS Server

IP: []

Port: []

Shared: []

Secret: []

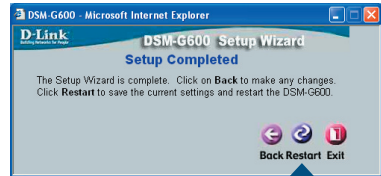
Input 8 printable ASCII characters.

Back Next Exit

Click **Next**.

For more information on WEP and WPA security, please refer to section on **Wireless Security** in your manual located on the D-Link CD-ROM.

Configuration (continued)

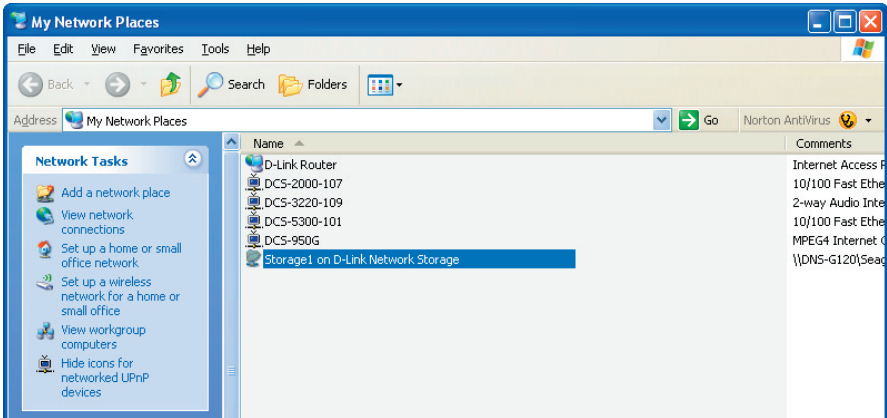


Click **Restart**.

You have completed the basic configuration using the setup wizard!

Viewing Files and Folders

To view the content on your internal/USB drive, double-click on the **My Network Places** icon on your desktop and double-click on the folder that represents your internal/USB drive.



By default, all users on your network will have read/write permissions to all folders and files on the internal/USB drive(s).

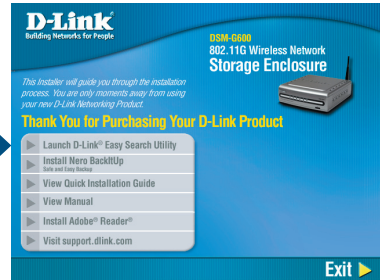
For more information on creating users and assigning permissions, please refer to the **Using the Configuration Utility** section in the manual included on your DSM-G600 CD.

Mapping Drives

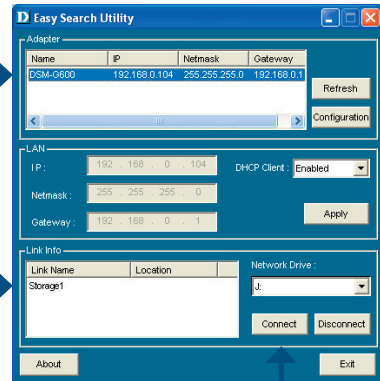
You can assign a drive letter (e.g. E:) to a specific folder on your internal/USB drive(s) that are connected to your DSM-G600.

Insert the D-Link DSM-G600 CD into your CD drive.

Click **Launch D-Link Easy Search Utility**.



Highlight an available DSM-G600.

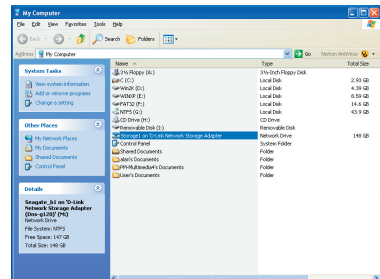


Available shares will be displayed. Highlight the share you want to map.

Select an available drive letter from the drop-down menu and click **Connect**.

Once you click Connect, your mapped drive will be available. Double-click on the **My Computer** icon on your desktop.

Double-click the mapped drive to access the drive.



You can assign a drive letter (e.g. E:) to a specific folder on your internal/USB drive(s) that are connected to your DSM-G600.

Notes

Technical Support

D-Link's website contains the latest user documentation and software updates for D-Link products.

D-Link provides free technical support for customers within the United States and Canada for the duration of the product's warranty period.

U.S. and Canadian customers can contact D-Link Technical Support through our website or by phone.

United States

Telephone

(877) 453-5465

Twenty four hours a day, seven days a week.

World Wide Web

<http://support.dlink.com>

E-mail

support@dlink.com

Canada

Telephone

(800) 361-5265

Monday through Friday, 7:30am to 12:00am EST.

World Wide Web

<http://support.dlink.ca>

E-mail

support@dlink.ca



Version 2.0
Revised 07/26/2005

Copyright ©2005 D-Link Corporation/D-Link Systems, Inc. All rights reserved. D-Link, the D-Link logo are registered trademarks of D-Link Corporation or its subsidiaries in the United States and other countries. Other trademarks are the property of their respective owners. Maximum wireless signal rate based on IEEE Standard 802.11g specifications. Actual data throughput will vary. Network conditions and environmental factors, including volume of network traffic, building materials and construction, and network overhead lower actual data throughput rate. Product specifications, size and shape are subject to change without notice, and actual product appearance may differ from that depicted on the packaging. Visit www.dlink.com for more details.