

Document# DI118x-970305  
Requirements: Workshop software  
DI-118x devices  
Eicon Diva T/A

## Using Eicon diva T/A PCMCIA ISDN cards with DI-118x

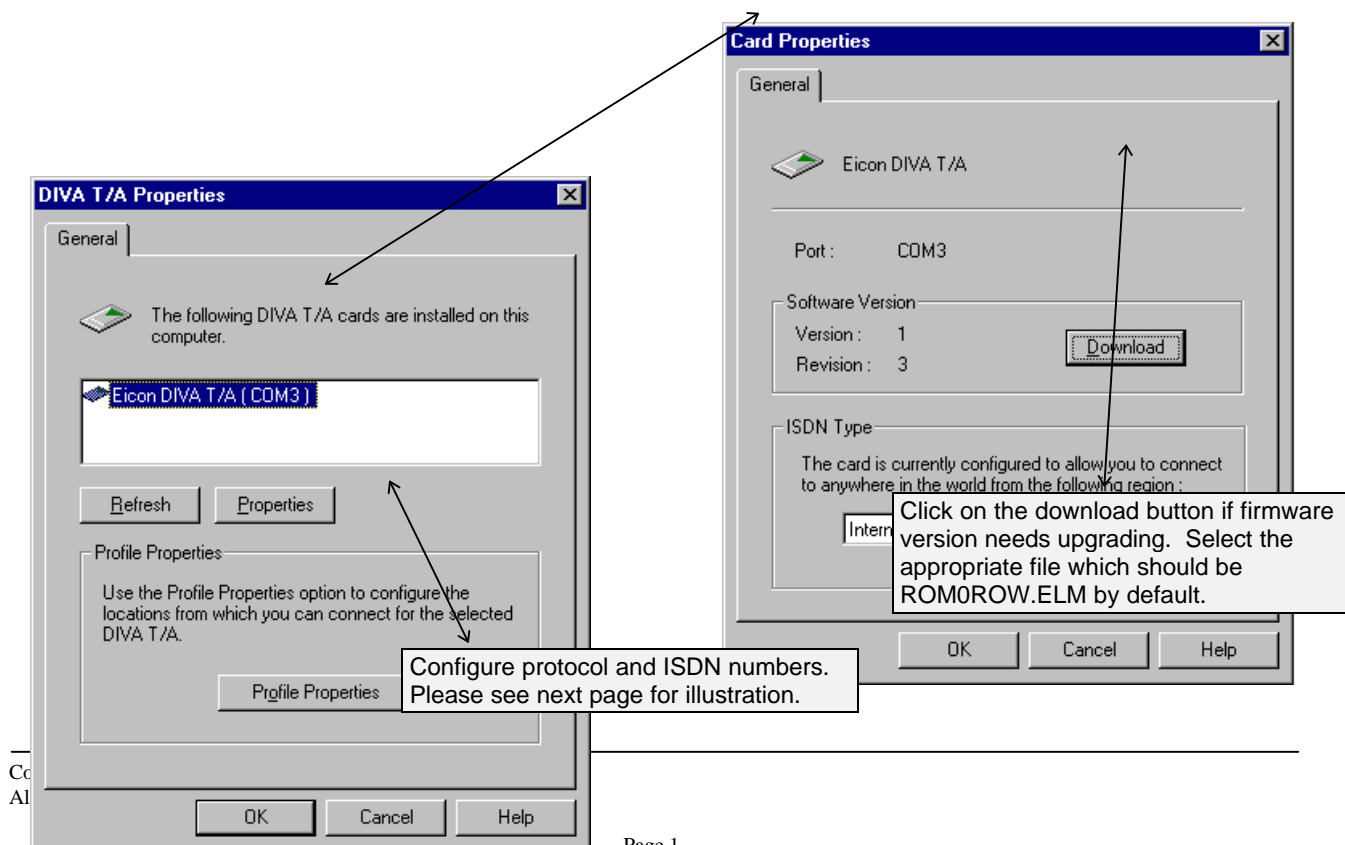
### ***Introduction***

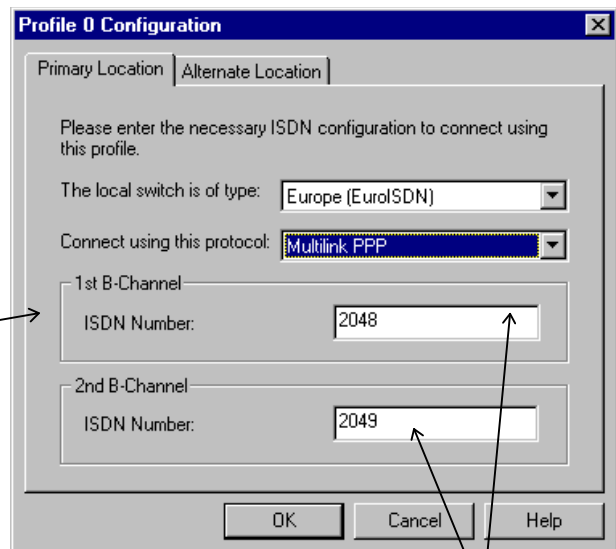
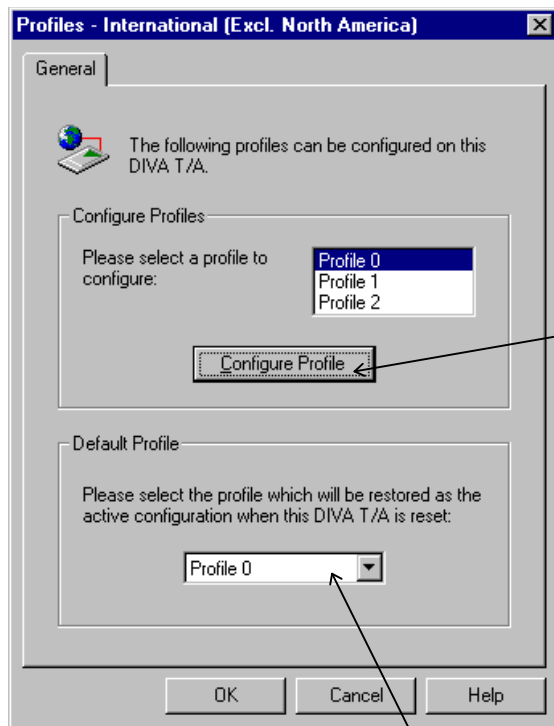
This document is designed to assist users in installing Eicon diva T/A cards in the DI-118x product range. This document is specific to European installations of DI-118x and may not be applicable for countries not equipped with EuroISDN compatible switches. Your local ISDN service provider should be able to tell you more. The figures might not be very clear when viewed from your PC.

### ***Pre-installation notes for Eicon diva T/A cards***

Please make sure that the diva T/A has at least firmware 1.3 installed. We have tested firmware 1.3 and 1.3.1 successfully in our installation. The diva T/A cards ships with a CD-ROM containing a Windows based configuration tool which installs quite easily. To actually use the configuration utility, your PC must have an available PCMCIA slot w/ the proper diva T/A drivers installed. The diva T/A packaging contains quick configuration addendums on installation with Windows 3.x and Windows 95 among other operating systems.

Before using the diva T/A cards on DI-118x, they have to be configured by assigning an appropriate protocol and local ISDN numbers. A brief tutorial of the diva configuration tool is illustrated below:





Must be your local ISDN numbers. As such, you cannot connect this particular diva T/A to another ISDN line without reconfiguring the ISDN numbers.

### **Workshop installation**

Workshop is the Windows for the DI-118x product latest release of Workshop are feature files containing kernel versions 3.0.2 for the DI-118x series. Please make sure you are using this version or newer. For users of DI-1181XL or the other DI-118x w/ Prime upgrades, you will be required to enter an activation key. Please contact D-Link and have the MAC address of your DI-118x device. We shall provide you with the proper activation key.

Make sure you select the correct profile as default.

### **and configuration**

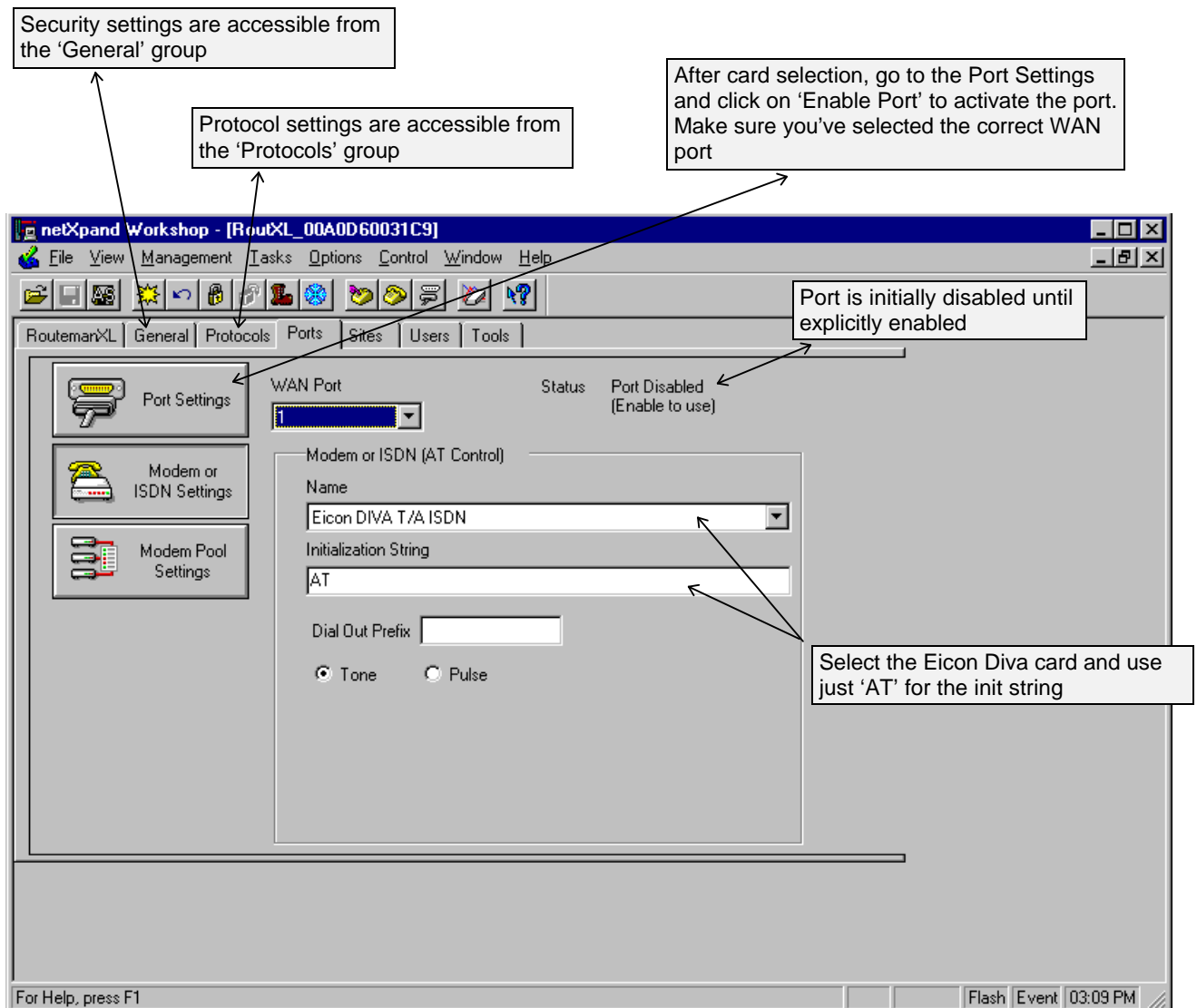
based configuration and management utility range. As of writing this document, the is 3.0.0d. With this release of Workshop

**Note:** For new devices which already ships with Workshop 3.0, the packaging will include a generic activation key to enable you to use Workshop 3.0 with any DI-118x device.

Summary of essential configurations to setup a connection between 2 DI-118x:

1. Make sure security is enabled in both devices with PAP or PAP/CHAP. This option is accessible under the 'General' group. This is required for multilink PPP connections as in dual B channel links.
2. Enable/Disable needed protocols appropriately. You can access these options under the 'Protocols' group.
3. Select the appropriate hardware port and double check the configurations as for the Eicon diva T/A. Be sure to enable the port after configuration. A screen capture as illustrated in the next pages will show an example of this.
4. Configure remote site names properly for both devices with corresponding security names and passwords. You also configure which protocols will be active with each particular remote sites.
5. After you have finished the settings, be sure to Apply and Save settings. These options are accessible from the Management menu or from the icons on the toolbar.

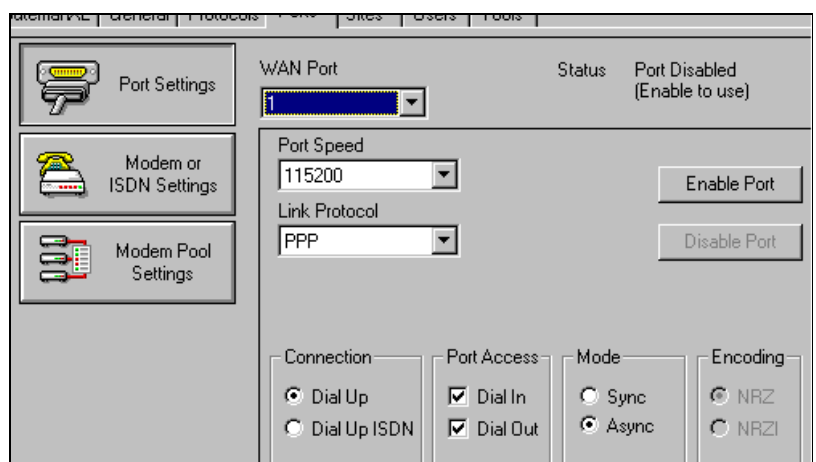
It is not in the scope of this document to provide complete step-by-step procedure on how to perform the tasks mentioned above. Screen captures illustrated below have been made available to make this installation as simple as possible. For more details on how to use Workshop, please refer to the user's guide.



### Notes for Port Settings

In port settings, choose the parameters as shown on the figure to the right. Select 'Dial-Up' because the card is controlled via standard AT commands. The maximum port speed for async cards is 115200 bps. However, when you are connecting both B channels in a multilink PPP configuration, the diva T/A will do an async to sync conversion automatically to achieve a transfer speed of 128Kbps.

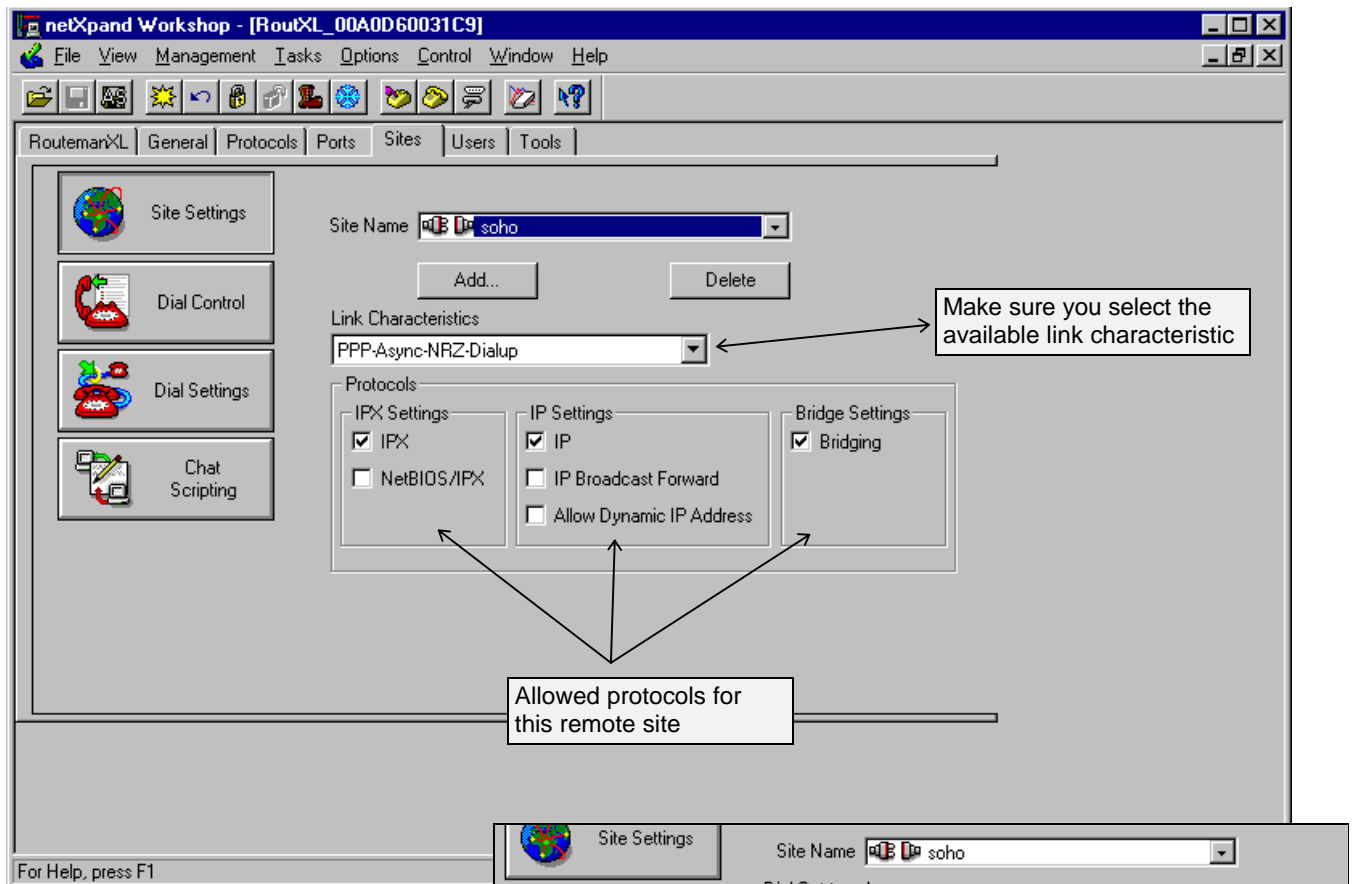
As can be seen on the same figure, you must click on the 'Enable Port' to activate the port for use.



### **Remote Site setup**

You must configure a remote site for each remote DI-118x or router that you want to connect to. This is the same for the remote device.

You should add a new remote site, select the link characteristics (based on available ports as selected from the port settings) and choose which protocols will be allowed with this remote site.

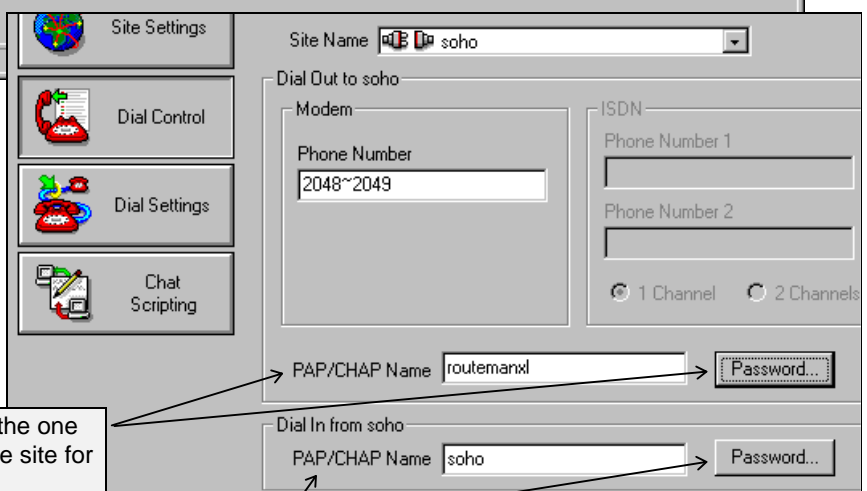


The Dial Control settings (as shown on the overlaid figure) is where you would need to put the remote phone number to dial and also configure the security names and passwords.

#### **Note on phone number:**

If you want a multilink connection using both B channels, separate the 2 phone numbers with a '~' symbol as shown.

This name and password is the one that will be sent to the remote site for connection authorisation



#### **Note on passwords:**

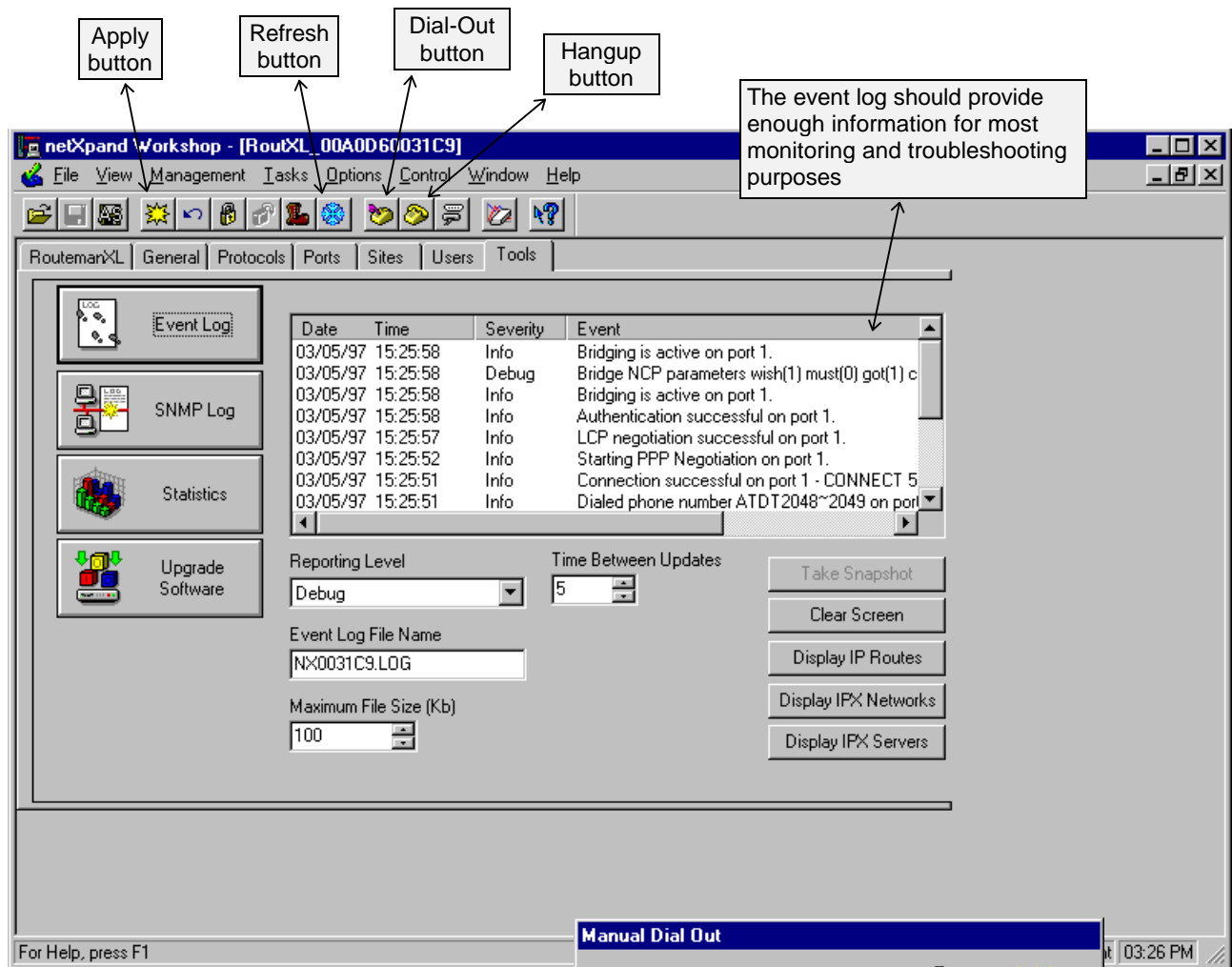
Default password is 'changeme'

This name and password is the one that will be used by the local device to authorise connection requests from this remote site

### ***Final reminders***

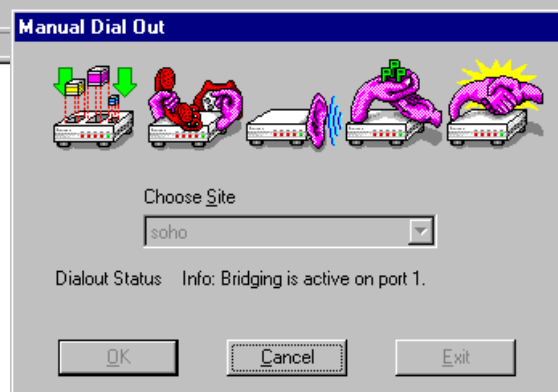
After all configurations are done, be sure to Apply the settings. This will update the settings on the box but does not save it permanently into flash. You must do a Save Settings from the Management menu to save the settings permanently to flash.

At this point, you should be ready to dial-out and test the connection. You should look at the Event log to verify an activities. Try Refresh to update the event log. In the 'Tools' group, you can also check and upgrade the firmware version of your DI-118x products.



### ***Connection Note:***

When you do a manual dial, you will see something like the figure illustrated to towards the right. You should see 'CONNECT 512000' message upon successful connection. The message actually refers to the DTE speed and not the actual connection speed.



~ End of Document ~