

D-Link

DI-707

User Manual

LIMITED WARRANTY

D-Link Systems, Inc. ("D-Link") provides this limited warranty for its product only to the person or entity who originally purchased the product from D-Link or its authorized reseller or distributor.

Limited Hardware Warranty: D-Link warrants that the hardware portion of the D-Link products described below ("Hardware") will be free from material defects in workmanship and materials from the date of original retail purchase of the Hardware, for the period set forth below applicable to the product type ("Warranty Period") if the Hardware is used and serviced in accordance with applicable documentation; provided that a completed Registration Card is returned to an Authorized D-Link Service Office within ninety (90) days after the date of original retail purchase of the Hardware. If a completed Registration Card is not received by an authorized D-Link Service Office within such ninety (90) day period, then the Warranty Period shall be ninety (90) days from the date of purchase.

<i>Product Type</i>	<i>Warranty Period</i>
Product (excluding power supplies and fans), if purchased and delivered in the fifty (50) United States, or the District of Columbia ("USA")	As long as the original purchaser still owns the product
Product purchased or delivered outside the USA	One (1) Year
Power Supplies and Fans	One (1) Year
Spare parts and spare kits	Ninety (90) days

D-Link's sole obligation shall be to repair or replace the defective Hardware at no charge to the original owner. Such repair or replacement will be rendered by D-Link at an Authorized D-Link Service Office. The replacement Hardware need not be new or of an identical make, model or part; D-Link may in its discretion may replace the

defective Hardware (or any part thereof) with any reconditioned product that D-Link reasonably determines is substantially equivalent (or superior) in all material respects to the defective Hardware. The Warranty Period shall extend for an additional ninety (90) days after any repaired or replaced Hardware is delivered. If a material defect is incapable of correction, or if D-Link determines in its sole discretion that it is not practical to repair or replace the defective Hardware, the price paid by the original purchaser for the defective Hardware will be refunded by D-Link upon return to D-Link of the defective Hardware. All Hardware (or part thereof) that is replaced by D-Link, or for which the purchase price is refunded, shall become the property of D-Link upon replacement or refund.

Limited Software Warranty: D-Link warrants that the software portion of the product ("Software") will substantially conform to D-Link's then current functional specifications for the Software, as set forth in the applicable documentation, from the date of original delivery of the Software for a period of ninety (90) days ("Warranty Period"), if the Software is properly installed on approved hardware and operated as contemplated in its documentation. D-Link further warrants that, during the Warranty Period, the magnetic media on which D-Link delivers the Software will be free of physical defects. D-Link's sole obligation shall be to replace the non-conforming Software (or defective media) with software that substantially conforms to D-Link's functional specifications for the Software. Except as otherwise agreed by D-Link in writing, the replacement Software is provided only to the original licensee, and is subject to the terms and conditions of the license granted by D-Link for the Software. The Warranty Period shall extend for an additional ninety (90) days after any replacement Software is delivered. If a material non-conformance is incapable of correction, or if D-Link determines in its sole discretion that it is not practical to replace the non-conforming Software, the price paid by the original licensee for the non-conforming Software will be refunded by D-Link; provided that the non-conforming Software (and all copies thereof) is first returned to D-Link. The license granted respecting any Software for which a refund is given automatically terminates.

What You Must Do For Warranty Service:

Registration Card. The Registration Card provided at the back of this manual must be completed and returned to an Authorized D-Link Service Office for each D-Link product within ninety (90) days after the product is purchased and/or licensed. The addresses/telephone/fax list of the nearest Authorized D-Link Service Office is provided in the back of this manual. **FAILURE TO PROPERLY COMPLETE AND TIMELY RETURN THE REGISTRATION CARD MAY AFFECT THE WARRANTY FOR THIS PRODUCT.**

Submitting A Claim. Any claim under this limited warranty must be submitted in writing before the end of the Warranty Period to an Authorized D-Link Service Office. The claim must include a written description of the Hardware defect or Software nonconformance in sufficient detail to allow D-Link to confirm the same. The original product owner must obtain a Return Material Authorization (RMA) number from the Authorized D-Link Service Office and, if requested, provide written proof of purchase of the product (such as a copy of the dated purchase invoice for the product) before the warranty service is provided. After an RMA number is issued, the defective product must be packaged securely in the original or other suitable shipping package to ensure that it will not be damaged in transit, and the RMA number must be prominently marked on the outside of the package. The packaged product shall be insured and shipped to D-Link, 53 Discovery Drive, Irvine CA 92618, with all shipping costs prepaid. D-Link may reject or return any product that is not packaged and shipped in strict compliance with the foregoing requirements, or for which an RMA number is not visible from the outside of the package. The product

III

owner agrees to pay D-Link's reasonable handling and return shipping charges for any product that is not packaged and shipped in accordance with the foregoing requirements, or that is determined by D-Link not to be defective or non-conforming.

What Is Not Covered:

This limited warranty provided by D-Link does not cover:

Products that have been subjected to abuse, accident, alteration, modification, tampering, negligence, misuse, faulty installation, lack of reasonable care, repair or service in any way that is not contemplated in the documentation for the product, or if the model or serial number has been altered, tampered with, defaced or removed;

Initial installation, installation and removal of the product for repair, and shipping costs;

Operational adjustments covered in the operating manual for the product, and normal maintenance;

Damage that occurs in shipment, due to act of God, failures due to power surge, and cosmetic damage; and

Any hardware, software, firmware or other products or services provided by anyone other than D-Link.

Disclaimer of Other Warranties: EXCEPT FOR THE LIMITED WARRANTY SPECIFIED HEREIN, THE PRODUCT IS PROVIDED "AS-IS" WITHOUT ANY WARRANTY OF ANY KIND INCLUDING, WITHOUT LIMITATION, ANY WARRANTY OF MERCHANTABILITY, FITNESS FOR A PARTICULAR PURPOSE AND NON-INFRINGEMENT. IF ANY IMPLIED WARRANTY CANNOT BE DISCLAIMED IN ANY TERRITORY WHERE A PRODUCT IS SOLD, THE DURATION OF SUCH IMPLIED WARRANTY SHALL BE LIMITED TO NINETY (90) DAYS. EXCEPT AS EXPRESSLY COVERED UNDER THE LIMITED WARRANTY PROVIDED HEREIN, THE ENTIRE RISK AS TO THE QUALITY, SELECTION AND PERFORMANCE OF THE PRODUCT IS WITH THE PURCHASER OF THE PRODUCT.

Limitation of Liability: TO THE MAXIMUM EXTENT PERMITTED BY LAW, D-LINK IS NOT LIABLE UNDER ANY CONTRACT, NEGLIGENCE, STRICT LIABILITY OR OTHER LEGAL OR EQUITABLE THEORY FOR ANY LOSS OF USE OF THE PRODUCT, INCONVENIENCE OR DAMAGES OF ANY CHARACTER, WHETHER DIRECT, SPECIAL, INCIDENTAL OR CONSEQUENTIAL (INCLUDING, BUT NOT LIMITED TO, DAMAGES FOR LOSS OF GOODWILL, WORK STOPPAGE, COMPUTER FAILURE OR MALFUNCTION, LOSS OF INFORMATION OR DATA CONTAINED IN, STORED ON, OR INTEGRATED WITH ANY PRODUCT RETURNED TO D-LINK FOR WARRANTY SERVICE) RESULTING FROM THE USE OF THE PRODUCT, RELATING TO WARRANTY SERVICE, OR ARISING OUT OF ANY BREACH OF THIS LIMITED WARRANTY, EVEN IF D-LINK HAS BEEN ADVISED OF THE POSSIBILITY OF SUCH DAMAGES. THE SOLE REMEDY FOR A BREACH OF THE FOREGOING LIMITED WARRANTY IS REPAIR, REPLACEMENT OR REFUND OF THE DEFECTIVE OR NON-CONFORMING PRODUCT.

GOVERNING LAW: This Limited Warranty shall be governed by the laws of the state of California.

Some states do not allow exclusion or limitation of incidental or consequential damages, or limitations on how long an implied warranty lasts, so the foregoing limitations and exclusions may not apply. This limited warranty provides specific legal rights and the product owner may also have other rights which vary from state to state.

Wichtige Sicherheitshinweise

1. Bitte lesen Sie sich diese Hinweise sorgfältig durch.

2. Heben Sie diese Anleitung für den spätern Gebrauch auf.
3. Vor jedem Reinigen ist das Gerät vom Stromnetz zu trennen. Vervenden Sie keine Flüssig- oder Aerosolreiniger. Am besten dient ein angefeuchtetes Tuch zur Reinigung.
4. Um eine Beschädigung des Gerätes zu vermeiden sollten Sie nur Zubehöerteile verwenden, die vom Hersteller zugelassen sind.
5. Das Gerät is vor Feuchtigkeit zu schützen.
6. Bei der Aufstellung des Gerätes ist auf sichern Stand zu achten. Ein Kippen oder Fallen könnte Verletzungen hervorrufen. Verwenden Sie nur sichere Standorte und beachten Sie die Aufstellhinweise des Herstellers.
7. Die Belüftungsöffnungen dienen zur Luftzirkulation die das Gerät vor Überhitzung schützt. Sorgen Sie dafür, daß diese Öffnungen nicht abgedeckt werden.
8. Beachten Sie beim Anschluß an das Stromnetz die Anschlußwerte.
9. Die Netzanschlußsteckdose muß aus Gründen der elektrischen Sicherheit einen Schutzleiterkontakt haben.
10. Verlegen Sie die Netzanschlußleitung so, daß niemand darüber fallen kann. Es sollte auch nichts auf der Leitung abgestellt werden.
11. Alle Hinweise und Warnungen die sich am Geräten befinden sind zu beachten.
12. Wird das Gerät über einen längeren Zeitraum nicht benutzt, sollten Sie es vom Stromnetz trennen. Somit wird im Falle einer Überspannung eine Beschädigung vermieden.
13. Durch die Lüftungsöffnungen dürfen niemals Gegenstände oder Flüssigkeiten in das Gerät gelangen. Dies könnte einen Brand bzw. Elektrischen Schlag auslösen.
14. Öffnen Sie niemals das Gerät. Das Gerät darf aus Gründen der elektrischen Sicherheit nur von autorisiertem Servicepersonal geöffnet werden.
15. Wenn folgende Situationen auftreten ist das Gerät vom Stromnetz zu trennen und von einer qualifizierten Servicestelle zu überprüfen:
 - a – Netzkabel oder Netzstecker sint beschädigt.
 - b – Flüssigkeit ist in das Gerät eingedrungen.
 - c – Das Gerät war Feuchtigkeit ausgesetzt.
 - d – Wenn das Gerät nicht der Bedienungsanleitung entsprechend funktioniert oder Sie mit Hilfe dieser Anleitung keine Verbesserung erzielen.
 - e – Das Gerät ist gefallen und/oder das Gehäuse ist beschädigt.
 - f – Wenn das Gerät deutliche Anzeichen eines Defektes aufweist.
16. Bei Reparaturen dürfen nur Orginalersatzteile bzw. den Orginalteilen entsprechende Teile verwendet werden. Der Einsatz von ungeeigneten Ersatzteilen kann eine weitere Beschädigung hervorrufen.
17. Wenden Sie sich mit allen Fragen die Service und Repartur betreffen an Ihren Servicepartner. Somit stellen Sie die Betriebssicherheit des Gerätes sicher.
18. Zum Netzanschluß dieses Gerätes ist eine geprüfte Leitung zu verwenden, Für einen Nennstrom bis 6A und einem Gerätegewicht gr ßer 3kg ist eine Leitung nicht leichter als H05VV-F, 3G, 0.75mm² einzusetzen.

Trademarks

Copyright ©1999 D-Link Corporation. Contents subject to change without prior notice. D-Link is a registered trademark of D-Link Corporation/D-Link Systems, Inc. All other trademarks belong to their respective proprietors.

Copyright Statement

No part of this publication may be reproduced in any form or by any means or used to make any derivative such as translation, transformation, or adaptation without permission from D-Link Corporation/D-Link Systems Inc., as stipulated by the United States Copyright Act of 1976.

CE Mark Warning

This is a Class B product. In a domestic environment, this product may cause radio interference, in which case the user may be required to take adequate measures

Warnung!

Dies ist inProdukt der Klasse B. Im Wohnbereich kann diesesProdukt Funkstoerungen verursachen. In diesem Fall kann vom Benutzer verlangt werden, angemessene Massnahmen zu ergreifen.

Advertencia de Marca de la CE

Este es un producto de ClaseB. En un entorno doméstico, puede causar interferencias de radio, en cuyo caso, puede requerirse al usuario para que adopte las medidas adecuadas.

Attention!

Ceci est un produit de classe B. Dans un environnement domestique, ce produit pourrait causer des interférences radio, auquel cas l'utilisateur devrait prendre les mesures adéquates.

Attenzione!

Il presente prodotto appartiene alla classe B. Se utilizzato in ambiente domestico il prodotto può causare interferenze radio, nel cui caso è possibile che l'utente debba assumere provvedimenti adeguati.

FCC Warning

This equipment has been tested and found to comply with the limits for a Class B digital device, pursuant to part 15 of the FCC Rules. These limits are designed to provide reasonable protection against harmful interference in a residential installation. This equipment generates, uses and can radiate radio frequency energy and, if not installed and used in accordance with the instructions, may cause harmful interference to radio communications. However, there is no guarantee that interference

will not occur in a particular installation. If this equipment does cause harmful interference to radio or television reception, which can be determined by turning the equipment off and on, the user is encouraged to try to correct the interference by one or more of the following measures:

- Reorient or relocate the receiving antenna.
- Increase the separation between the equipment and receiver.
- Connect the equipment into an outlet on a circuit different from that to which the receiver is connected.
- Consult the dealer or an experienced radio/ TV technician for help.

VCCI Warning

この装置は、情報処理装置等電波障害自主規制協議会（V C C I）の基準に基づきクラスB情報技術装置です。この装置は、家庭環境で使用することを目的としていますが、この装置がラジオやテレビジョン受信機に近接して使用されると、受信障害を引き起こすことがあります。
取扱説明書に従って正しい取り扱いをして下さい。

Table of Contents

Chapter 1 Introduction.....	1
1.1 Functions and Features.....	1
1.2 Packing List.....	2
Chapter 2 Hardware Installation.....	3
2.1. Panel Layout.....	3
2.2. Installation Requirements.....	4
2.3. Procedure for Hardware Installation.....	5
Chapter 3 Network Settings and Software Installation.....	7
3.1 Make correct network settings to the computer	7
Chapter 4 Configuring The DI-707.....	9
4.1 Start-up and Log in.....	9
4.2 Status	10
4.3 Tools	11
4.4 Setup	12
4.5 DHCP Server.....	14
4.6 Virtual Server.....	15
4.7 Special AP	16
4.8 Access Control.....	17
4.9 Misc Items	18
Appendix A Console Mode.....	19
Appendix B TCP/IP Configuration for Windows 95/98	20
B.1 Install TCP/IP protocol into your PC.....	20
B.2 Set TCP/IP protocol for working with the DI-707	21

Chapter 1 Introduction

Congratulations on your purchase of the DI-707 Broadband Router. The DI-707 is specifically designed for Small Office and Home Office needs. It provides a complete solution for Internet surfing and office resource sharing, and is easy for non-technical users to configure and operate. Instructions for installing and configuring the DI-707 can be found in this manual. Before you install and use the DI-707, please read this manual carefully to fully understand the functions of the DI-707.

1.1 Functions and Features

- **Cable/DSL modem and IP sharing**
Connects multiple computers to a broadband (cable or DSL) modem or an Ethernet router to surf the Internet.
- **Auto-sensing Ethernet Switch**
Equipped with a 4-port 10/100Mb auto-sensing Ethernet switch.
- **VPN supported**
Supports multiple PPTP sessions and allows setup of a VPN server and VPN clients.
- **Firewall**
All unwanted packets from outside intruders are blocked to protect your Intranet.
- **DHCP server supported**
All of the networked computers can retrieve TCP/IP settings automatically from the DI-707.
- **Web-based configuring**
Configurable through any networked computer's web browser using Netscape or Internet Explorer.

- **Access Control supported**
Allows you to assign different access rights for different users.
- **Virtual Server supported**
Enables you to expose WWW, FTP and other services on your LAN to be accessible to Internet users outside of your LAN.
- **User-Definable Application Sensing Tunnel**
User can define the attributes to support the special applications requiring multiple connections, like Internet gaming, video conferencing, Internet telephony and so on, then the DI-707 can sense the application type and open a multi-port tunnel for it.
- **DMZ Host supported**
DMZ Host fully exposes a networked computer to the Internet. Use this feature when the special application sensing tunnel feature does not allow an application to function properly.

1.2 Packing List

- One DI-707
- One power cord
- User Manual
- Quick Installation Guide
- Two CAT-5 UTP Fast Ethernet cables

Chapter 2 Hardware Installation

2.1. Panel Layout

2.1.1. Front Panel

All LED indicators and RJ-45 connectors are allocated to the front panel.

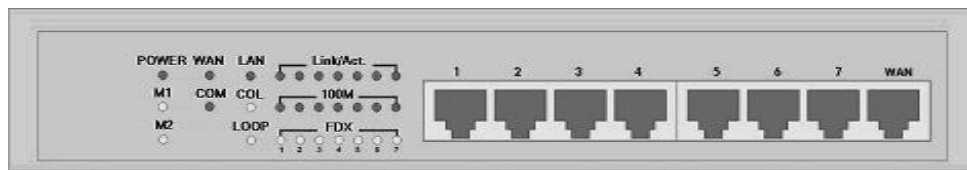


Figure 2-1 Front Panel

WAN: the port where you will connect your cable (or DSL) modem or Ethernet router.

Port 1-7: the ports where you will connect networked computers and other devices.

LED indicators:

LED's	Function	Color	Status	Description
POWER	Power indication	Green	On	Power is being applied to DI-707.
WAN	WAN port activity	Green	On	The WAN port is linked
			Blinking	The WAN port is sending or receiving data
LAN	LAN port activity	Green	On	The LAN port is linked
			Blinking	The LAN port is sending or receiving data
M1	System status 1	Orange	Blinking	DI-707 is functioning properly
M2	System status 2	Orange	On	DI-707 is working for some service
			Blinking	DI-707 is being configured or upgraded. Don' t turn it off !
COM	Serial port activity	Green	Blinking	Data transfer is in progress through COM port

COL	Collision indication	Orange	On	Transmission collisions have occurred on the LAN
LOOP	Loop indication	Orange	On	Loop connection has been detected
Link/Act.	Link status	Green	On	The corresponding port is linked
			Blinking	The corresponding port is sending or receiving data
100M	10/100M indication	Green	On	The corresponding port is transmitting or receiving data in 100Mbps.
FDX	Full Duplex indication	Orange	On	The corresponding port is transmitting or receiving data in full duplex mode.

2.1.2. Rear Panel



Figure 2-2 Rear Panel

Ports	Function	Specification
POWER Inlet	Power inlet	AC 90V-230V/50-60Hz
COM	Serial port (connect analog modem or console cable)	9-pins D-type male connector
Power Switch	Power on/off	On/Off

2.2. Installation Requirements

The DI-707 can be positioned at any convenient place in your office or house. No special wiring or cooling requirements is needed. However, you should comply with the following guidelines to install:

- Place the DI-707 on a flat horizontal surface.
- Keep the DI-707 away from excessive heat.
- Do not place the DI-707 in a dusty or wet environment.

The recommended operational specifications of DI-707 are:

Temperature	5 °C ~ 55 °C
Humidity	10 % ~ 90 %

In addition, remember to turn off the power, remove the power cord from the outlet, and keep your hands dry when you install the DI-707.

2.3. Procedure for Hardware Installation

1. **Setup LAN connection:** connect an Ethernet cable from your computer's Ethernet port to one of the LAN ports of the DI-707.

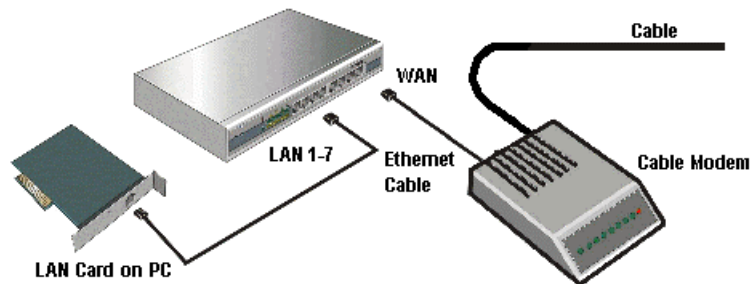


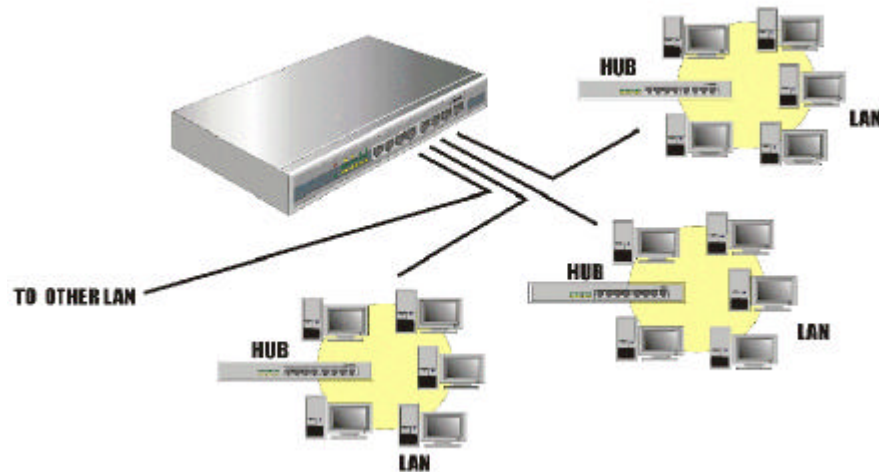
Figure 2-5 Setup of LAN connections for DI-707.

2. **Setup WAN connection:** prepare an Ethernet cable for connecting the DI-707 to your cable/xDSL modem or Ethernet backbone. Figure 2-5 illustrates the WAN connection.
3. **Connecting DI-707 with other hubs:**

In case you need not to connect with another hub, skip this step.

If you want to connect DI-707 with another hub, connect one of the ports 1-7 to that hub

by crossover Ethernet cable. If the hub you connected has an UPLINK port, you can also connect DI-707 with straight through Ethernet cable to that UPLINK port.



4. **Power on:** Connect the power cord to a power outlet and turn the power switch on. The DI-707 will automatically enter the self-test phase. When in the self-test phase, the indicators M1 and M2 will be lighted ON for about 5 seconds, and then M1 and M2 will flash three times to indicate that the self-test operation has finished. Finally, the M1 will flash continuously once per second to indicate that the DI-707 is in normal operation.

Chapter 3 Network Settings and Software Installation

To use the DI-707 correctly, you must properly configure the network settings of your computers and install the attached setup program into your MS Windows platform (Windows 95/98/Me/NT/2000).

3.1 Make correct network settings to the computer

The default *IP address* of the DI-707 is 192.168.0.1, and the default *subnet mask* is 255.255.255.0. These addresses can be changed to meet your need, but the default values are used in this manual. If the TCP/IP environment of your computer has not yet been configured, you can refer to **Appendix B** to configure it. For example,

1. configure *IP* as 192.168.0.5, *subnet mask* as 255.255.255.0 and *gateway* as 192.168.0.1, or,
2. configure your computers to load TCP/IP settings automatically, via the DHCP server built into the DI-707.

Note: Restart your computer every time you make any changes to your network settings.

After installing the TCP/IP communication protocol, you can use the ***ping*** command to check if your computer has successfully connected to the DI-707. The following example shows the ping procedure for Windows 95 platforms. First, execute the ***ping*** command

```
ping 192.168.0.1
```

If the following messages appear:

```
Pinging 192.168.0.1 with 32 bytes of data:
```

```
Reply from 192.168.0.1: bytes=32 time=2ms TTL=64
```

A communication link between your computer and the DI-707 has been successfully established. Otherwise, if you get the following messages,

```
Pinging 192.168.0.1 with 32 bytes of data:
```

Request timed out.

there must be something wrong with the installation. Follow the steps again to make sure the network settings are correct. You should check the following items in sequence:

1. *Is the Ethernet cable correctly connected between the DI-707 and your computer?*

Tip The LAN LED of the DI-707 and the link LED of network card on your computer must be lighted.

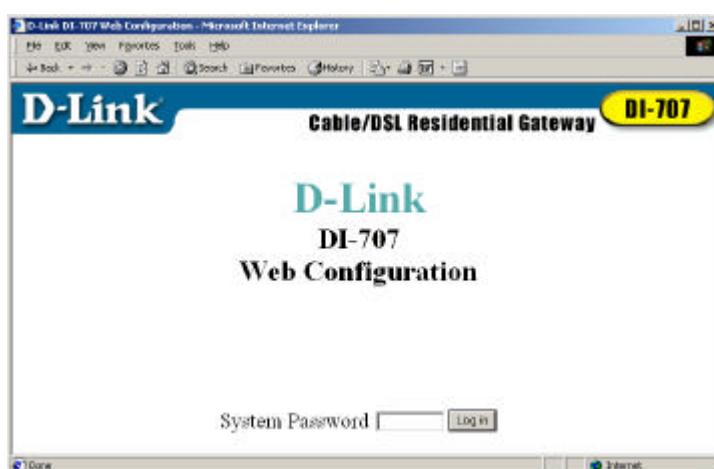
2. *Is the TCP/IP environment of your computers properly configured?*

Tip If the IP address of the DI-707 is 192.168.0.1, the IP address of your computer must be 192.168.123.X and default gateway must be 192.168.0.1.

Chapter 4 Configuring The DI-707

The DI-707 provides a Web based configuration scheme, that is, configuring by Netscape Communicator or Internet Explorer. This approach can be adopted in any MS Windows, Macintosh or UNIX based platform.

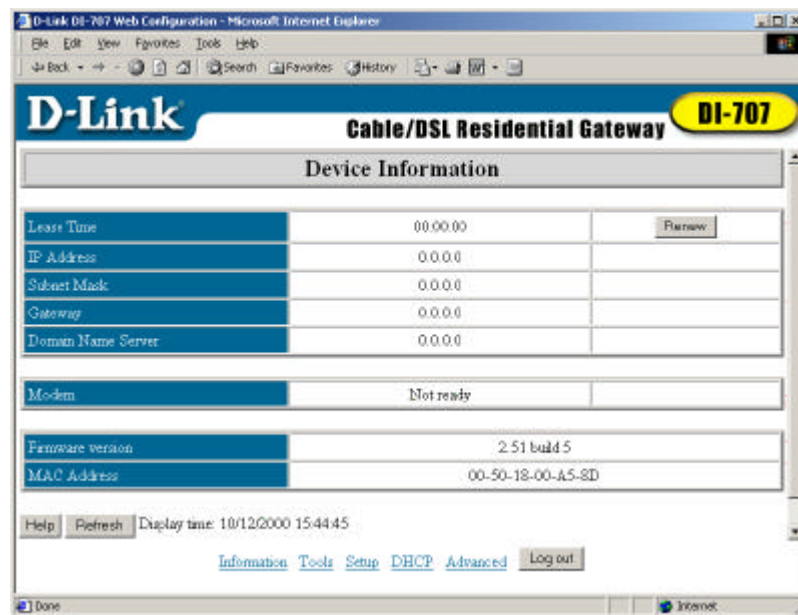
4.1 Start-up and Log in



Activate your browser, open settings, and *disable the proxy* or *add the IP address of the DI-707 into the exceptions box*. Then, type the DI-707's IP address [for example (default setting): **http://192.168.0.1**] in the *Location* (for Netscape) or *Address* (for IE) field and press ENTER.

After the connection is established, you will see the web user interface of the DI-707. There are two appearances of web user interface: *for general users* and *for system administrator*. To log in as an administrator, enter the system password (the factory setting is "**admin**") in the **System Password** field and click on the **Log in** button. If the password is correct, the web appearance will change into administrator configuration mode. As listed in its main menu, there are several options for system administration.

4.2 Status



This option provides the function for observing the DI-707's working status:

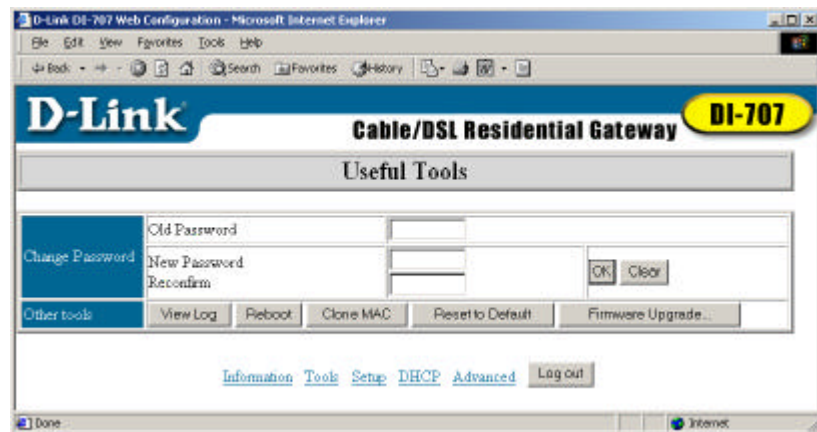
A. WAN Port Status.

If the WAN port is assigned a dynamic IP, a “**Renew**” or “**Release**” button may appear. You can click this button to renew or release the IP manually.

B. Modem Status.

C. Firmware version and WAN's MAC Address.

4.3 Tools

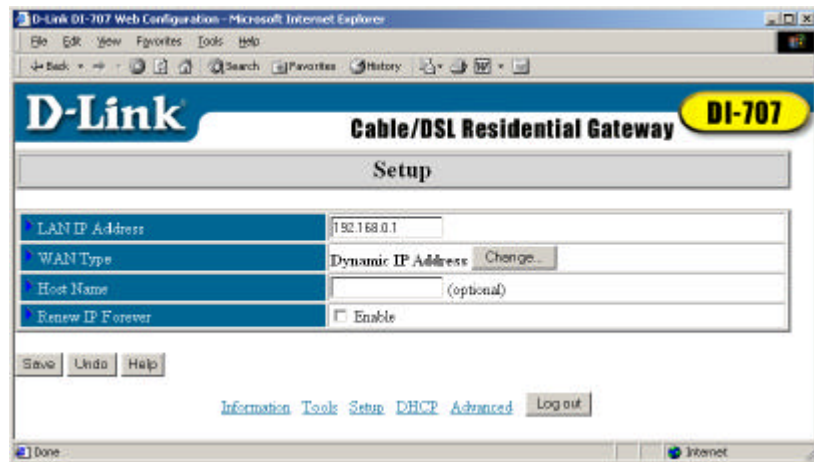


This option enables you to change the administrator password, view the log, and clone the MAC address.

You can also reboot the DI-707 by clicking the **Reboot** button.

Note: We strongly recommend that the system password be changed for security reasons. If you forget the system password, please refer to Appendix A to reset a new one.

4.4 Setup



This option is crucial to enable the DI-707 to work properly. The setting items and the web appearance depend on the WAN type. Choose correct WAN type before you start.

1. **LAN IP Address:** the DI-707's IP address. The default address is 192.168.0.1. You can change it to your need.
2. **WAN Type:** WAN connection type of your ISP. You can click the **Change** button to choose a correct one from the following four options:
 - A. *Static IP Address:* ISP assigns you a static IP address.
 - B. *Dynamic IP Address:* Obtain an IP address from ISP automatically.
 - C. *PPP over Ethernet:* Some ISPs require the use of PPPoE to connect to their services.
 - D. *Dial-up Network:* To surf the Internet via PSTN/ISDN.

4.4.1 Static IP Address

WAN IP Address, Subnet Mask, Gateway, Primary and Secondary DNS: enter the proper setting value provided by your ISP.

4.4.2 Dynamic IP Address

1. *Host Name*: optional. Required by some ISPs, for example, @Home.
2. *Renew IP Forever*: this feature enables the DI-707 to renew its IP address automatically when the lease time is expired even if the system is idle.

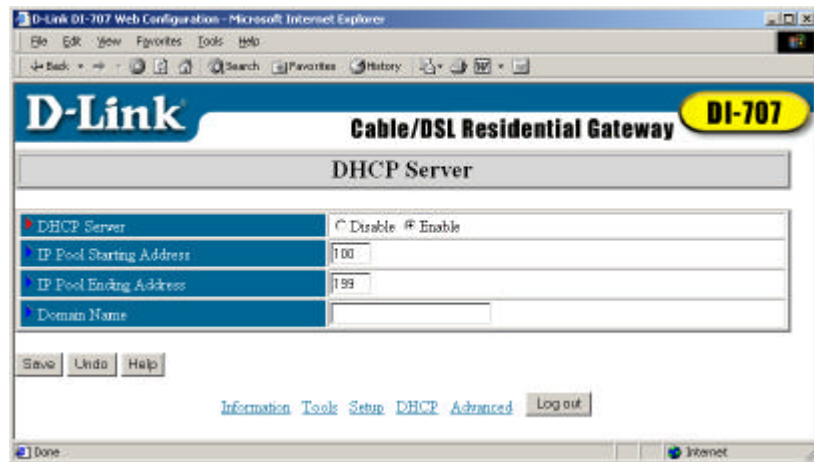
4.4.3 PPP over Ethernet

1. *PPPoE Account and Password*: the account and password your ISP assigned to you. If you don't want to change the password, keep it empty.
2. *PPPoE Service Name*: optional. Input the service name if your ISP requires it.
3. *Maximum Idle Time*: the maximum time the connection is idle before you are disconnected from your ISP and your PPPoE session is terminated.

4.4.4 Dial-up Network

1. *Dial-up Telephone, Account and Password*: assigned by your ISP. If you don't want to change the password, keep it empty.
2. *Primary and Secondary DNS*: automatically assigned if they are configured as "0.0.0.0."
3. *Maximum Idle Time*: the time of no activity before you are automatically disconnected from your dial-up session.
4. *Baud Rate*: the communication speed between the DI-707 and your MODEM or ISDN TA.
5. *Extra Setting*: optional settings to optimize the communication quality between the ISP and your MODEM or ISDN TA. Use if your ISP recommends and provides these settings.

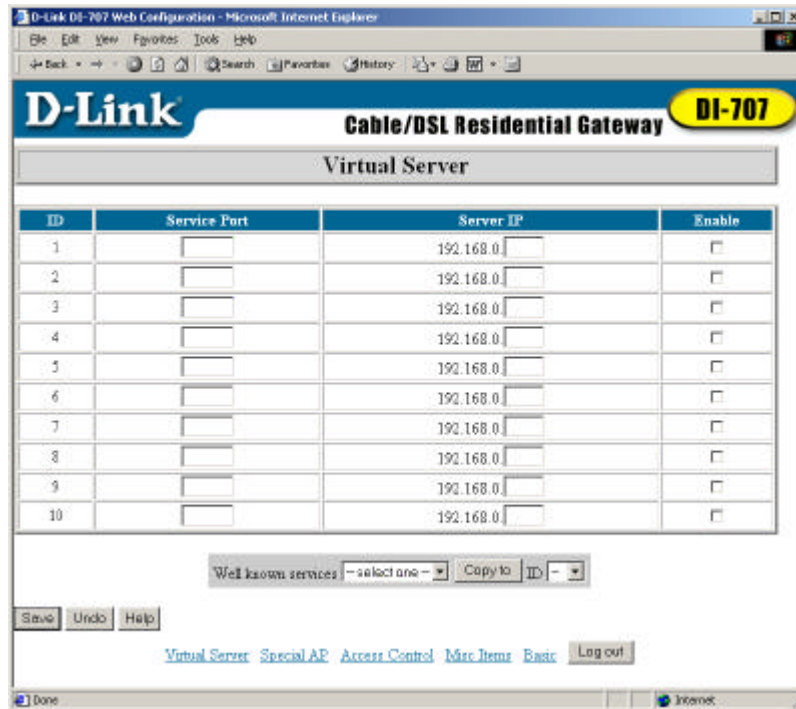
4.5 DHCP Server



The settings of TCP/IP environment include Host IP, Subnet Mask, Gateway, and DNS configurations. It is not a simple task to correctly configure all the computers in your LAN environment. Fortunately, DHCP provides a rather simple approach to handle all these settings. The DI-707 supports the function of DHCP server. If you enable the DI-707's DHCP server and configure your computers as "automatic IP allocation" mode, then when your computer is powered on, it will automatically load the proper TCP/IP settings from the DI-707. The settings of DHCP server include the following items:

1. **DHCP Server:** Choose "Disable" or "Enable."
2. **Range of IP Address Pool:** Whenever there is a request, the DHCP server will automatically allocate an unused IP address from the *IP address pool* to the requesting computer. You must specify the starting and ending address of the IP address pool.
3. **Domain Name:** Optional, this information will be passed to the client.

4.6 Virtual Server



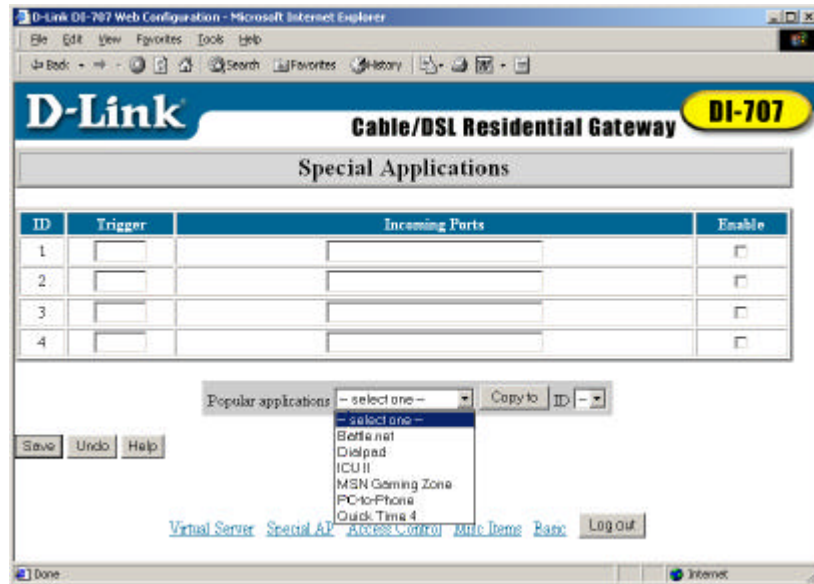
The DI-707's NAT firewall filters out unrecognized packets to protect your Intranet, so all hosts behind the DI-707 are invisible to the outside world. If you wish, you can make some of them accessible by enabling the *Virtual Server Mapping*.

A virtual server is defined as a **Service Port**, and all requests to this port will be redirected to the computer specified by the **Server IP**.

For example, if you have an FTP server (port 21) at 192.168.0.5, a Web server (port 80) at 192.168.123.2, and a VPN server at 192.168.123.6, then you need to specify the following virtual server mapping table:

Service Port	Server IP	Enable
21	192.168.0.5	V
80	192.168.0.6	V
1723	192.168.0.7	V

4.7 Special AP



Some applications require multiple connections, like Internet games, Video conferencing, Internet telephony and so on. Due to the firewall function, these applications cannot work with a pure NAT router. Special Applications enables some of these applications to work with a NAT router. If Special Applications is still insufficient to allow an application to function correctly, try DMZ host in the *Misc Items* options.

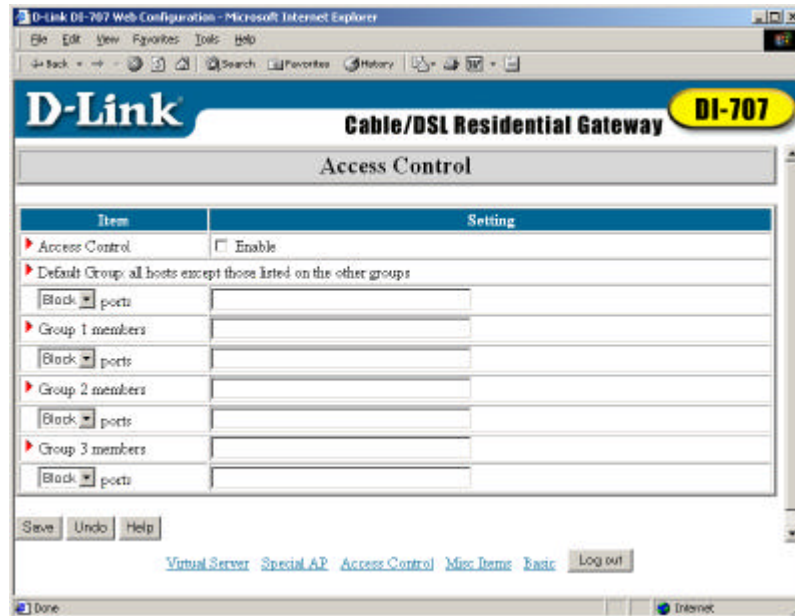
1. **Trigger**: the outbound port number the application issued first.
2. **Incoming Ports**: when the trigger packet is detected, the inbound packets to the specified port numbers are allowed to pass the firewall.

The DI-707 provides some predefined settings in the gray pad on the bottom of the web page.

Choose the **Popular application** and click **Copy** to copy the predefined setting.

Note! At any time, only one PC can use each Special Application tunnel.

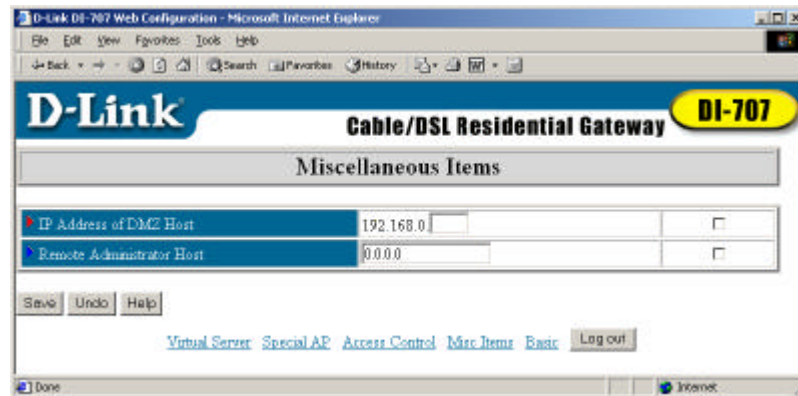
4.8 Access Control



Access Control allows you to assign different access rights for different users. First, you have to divide users into different groups. Users are identified by their IP addresses. You can assign the members of Group 1, 2 and 3. The others are all members of the Default Group. Second, you have to assign the access rights of each group. Access rights can allow or block users to access specified TCP and UDP ports. For example: If you want IP addresses 50-99 to block access to port 21 and 119, you would insert **50-99** into the Group 1 members box. Change the Ports drop-down box to **Block**, and type **21,119** into the box to the right of the Block box.

Group	IP Address	Access Right	Comments
Default	-	Allow ()	No access right (allow nothing)
Group 1	100-199	Allow (25,53,80,110)	Can browse (80), receive (110) and send (25) email only
Group 2	50-99	Block (21,119)	Cannot read net news (119) and FTP (21) only
Group 3	1-9,20	Block ()	Fully access (block nothing)

4.9 Misc Items



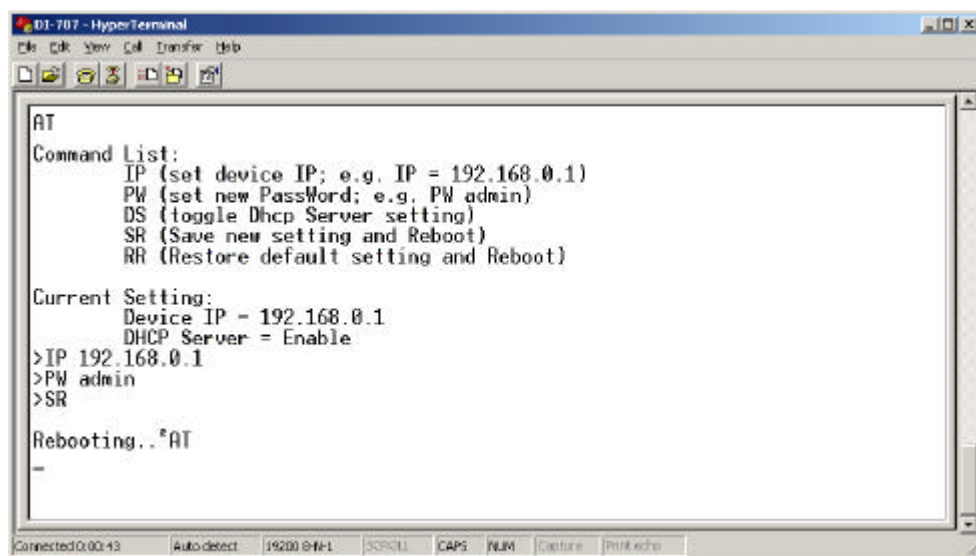
1. ***IP Address of DMZ Host:*** DMZ (DeMilitarized Zone) Host is a host without the protection of firewall. It allows a computer to be exposed to unrestricted 2-way communication. Note that, this feature should be used only when needed.
2. ***Remote Administrator Host:*** In general, only Intranet users can browse the built-in web pages to perform administrative tasks. This feature enables you to perform administrative tasks from a remote host. If this feature is enabled, only the specified IP address can perform remote administration. If the specified IP address is 0.0.0.0, any host can connect to the DI-707 to perform administrative tasks. When this feature is enabled, the web port will be shifted to 88.

Appendix A Console Mode

When you forget the system password or the IP address of the DI-707, you need to enter console mode to reset them.

Before invoking the console program, be sure to find a null modem cable and use it to connect from the DI-707's COM port to your computer's COM port. Then, execute a terminal program, such as the *Hyper Terminal* of MS Windows 95. The connection parameters should be set to **19200 8-N-1**. And, reboot the DI-707. When the M1 indicator starts flashing regularly, you can press the "**Enter**" key of the keyboard several times, there should be some messages and console prompt ">" appears in the terminal.

In the console mode, you may reset the IP address and the system password of the DI-707. Please remember to execute the **SR** command to save the changes you have made. For example,



```
DI-707 - HyperTerminal
File Edit View Call Transfer Help
[Icons]

AT
Command List:
  IP (set device IP; e.g. IP = 192.168.0.1)
  PW (set new Password; e.g. PW admin)
  DS (toggle Dhcp Server setting)
  SR (Save new setting and Reboot)
  RR (Restore default setting and Reboot)

Current Setting:
  Device IP = 192.168.0.1
  DHCP Server = Enable
>IP 192.168.0.1
>PW admin
>SR

Rebooting..*AT
=

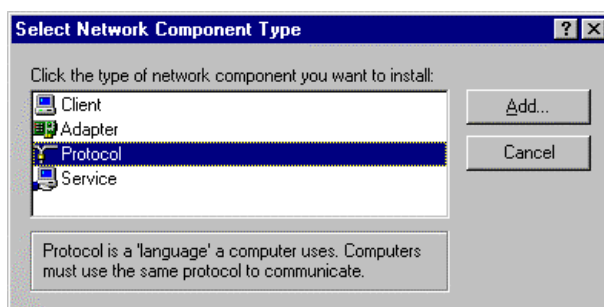
Connected 0:00:43  Auto detect  19200 8-N-1  SCRN  CAPS  NUM  Capture  Print echo
```

Appendix B TCP/IP Configuration for Windows 95/98

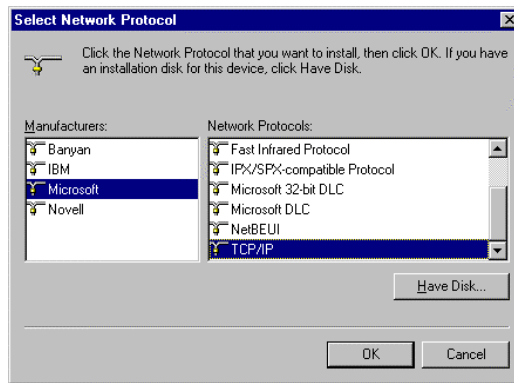
This section describes installing the TCP/IP protocol into your personal computer. Supposing you have successfully installed one network card on your personal computer. If not, please refer to your network card manual. Moreover, the Section B.2 tells you how to set TCP/IP values for working with the DI-707 correctly.

B.1 Install TCP/IP protocol into your PC

1. Click **Start** button and choose **Settings**, then click **Control Panel**.
2. Double click **Network** icon and select **Configuration** tab in the Network window.
3. Click **Add** button to add network component into your PC.
4. Double click **Protocol** to add TCP/IP protocol.



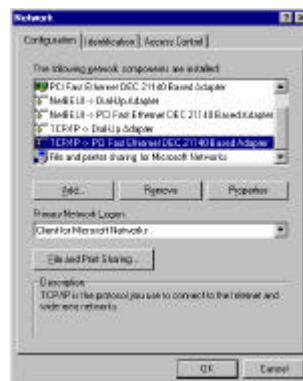
5. Select **Microsoft** item in the *manufactures* list. Choose **TCP/IP** in the *Network Protocols*. Click **OK** button to return to Network window.



6. The TCP/IP protocol shall be listed in the Network window. Click **OK** to complete the install procedure and restart your PC to enable the TCP/IP protocol.

B.2 Set TCP/IP protocol for working with the DI-707

1. Click **Start** button and choose **Settings**, then click **Control Panel**.
2. Double click **Network** icon. Select the TCP/IP line that has been associated to your network card in the **Configuration** tab of the Network window.



3. Click **Properties** button to set the TCP/IP protocol for the DI-707.

4. You have two setting methods:

A. Get IP via DHCP server

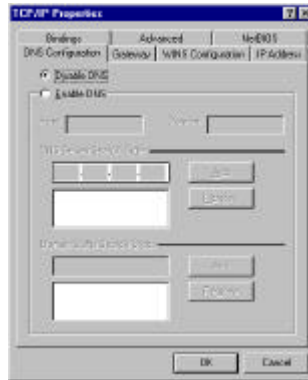
a. Select **Obtain an IP address automatically** in the *IP Address* tab.



b. Don't input any value in the *Gateway* tab.



c. Choose **Disable DNS** in the *DNS Configuration* tab.



B. Configure IP manually

- a. Select **Specify an IP address** in the *IP Address* tab. The default IP address of the DI-707 is 192.168.0.1. So please use 192.168.123.xxx (xxx is between 1 and 253) for *IP Address* field and 255.255.255.0 for *Subnet Mask* field.



- b. In the *Gateway* tab, add the IP address of the DI-707 (default IP is 192.168.0.1) in the *New gateway* field and click **Add** button.



- c. In the *DNS Configuration* tab, add the DNS values which are provided by the ISP into *DNS Server Search Order* field and click **Add** button.



Appendix C Technical Specifications

Standards:

- IEEE 802.3 10BASE-T Ethernet
- IEEE 802.3u 100BASE-TX Fast Ethernet
- IEEE 802.3x Flow Control
- IEEE 802.1p Priority Queue
- ANSI/IEEE 802.3 NWay auto-negotiation

Management:

- Web-Based

Ports:

- 7 x NWay 10BASE-T/100BASE-TX Fast Ethernet LAN
- 1 x 10BASE-T WAN
- 1 x RS-232 (DB-9)

LED's:

- Power
- WAN Activity
- LAN Activity
- M1
- M2
- COM Status
- COL (Collision)
- LOOP
- Link/Act. (Link Activity)
- 100M (10/100 Status)
- FDX (Full Duplex Status)

Power:

- DC 5V 2A

Operating Temperature:

- 5 C ~ 55 C

Humidity:

- 10% ~ 90%

D-Link Offices

AUSTRALIA	D-LINK AUSTRALASIA Unit 16, 390 Eastern Valley Way, Roseville, NSW 2069, Australia TEL: 61-2-9417-7100 FAX: 61-2-9417-1077 TOLL FREE: 1800-177-100 (Australia), 0800-900900 (New Zealand) URL: www.dlink.com.au E-MAIL: support@dlink.com.au info@dlink.com.au
CANADA	D-LINK CANADA 2180 Winston Park Drive, Oakville, Ontario L6H 5W1 Canada TEL: 1-905-829-5033 FAX: 1-905-829-5095 BBS: 1-965-279-8732 FREE CALL: 1-800-354-6522 URL: www.dlink.ca E-MAIL: techsup@dlink.ca
CHILE	D-LINK SOUTH AMERICA Isidora Goyenechea #2934 of 702, Las Condes, Santiago, Chile TEL: 56-2-232-3185 FAX: 56-2-2320923 URL: www.dlink.cl E-MAIL: ccasassu@dlink.cl , tsilva@dlink.cl
CHINA	D-LINK CHINA 2F, Sigma Building, 49 Zhichun Road, Haidian District, 100080 Beijing, China TEL: 86-10-88097777 FAX: 86-10-88096789 URL: www.dlink.com.cn
DENMARK	D-LINK DENMARK Naverland 2, DK-2800 Glostrup, Copenhagen, Denmark TEL: 45-43-969040 FAX: 45-43-424347 URL: www.dlink.dk E-MAIL: info@dlink.dk
EGYPT	D-LINK MIDDLE EAST 7 Assem Ebn Sabet Street, Heliopolis Cairo, Egypt TEL: 202-2456176 FAX: 202-2456192 URL: www.dlink-me.com E-MAIL: support@dlink-me.com , fateen@dlink-me.com
FRANCE	D-LINK FRANCE Le Florilege #2, Allee de la Fresnerie 78330 Fontenay Le Fleury France TEL: 33-1-30238688 FAX: 33-1-3023-8689 URL: www.dlink-france.fr E-MAIL: info@dlink-france.fr
GERMANY	D-LINK GERMANY Bachstrae 22, D-65830 Kriftel Germany TEL: 49-(0)6192-97110 FAX: 49-(0)6192-9711-11 URL: www.dlink.de BBS: 49-(0)6192-971199 (Analog) 49-(0)6192-971198 (ISDN) INFO LINE: 00800-7250-0000 (toll free) HELP LINE: 00800-7250-4000 (toll free) REPAIR LINE: 00800-72508000 E-MAIL: mbischoff@dlink.de , mboerner@dlink.de
INDIA	D-LINK INDIA Plot No.5, Kurla-Bandra Complex Road, Off Cst Road, Santacruz (E), Bombay - 400 098 India TEL: 91-22-652-8696 FAX: 91-22-652-8914 URL: www.dlink-india.com E-MAIL: service@dlink-india.com
ITALY	D-LINK ITALIA Via Nino Bonnet No. 6/b, 20154 Milano, Italy TEL: 39-02-29000676 FAX: 39-02-2900-1723 URL: www.dlink.it E-MAIL: info@dlink.it
JAPAN	D-LINK JAPAN 10F, 8-8-15 Nishi-Gotanda, Shinagawa-ku, Tokyo 141 Japan TEL: 81-3-5434-9678 FAX: 81-3-5434-9868 URL: www.d-link.co.jp E-MAIL: kida@d-link.co.jp
RUSSIA	D-LINK RUSSIA Michurinski Prospekt 49, 117607 Moscow, Russia TEL: 7-095-737-3389, 7-095-737-3492 FAX: 7-095-737-3390 E-MAIL: vl@dlink.ru
SINGAPORE	D-LINK INTERNATIONAL 1 International Business Park, #03-12 The Synergy, Singapore 609917 TEL: 65-774-6233 FAX: 65-774-6322 URL: www.dlink-intl.com E-MAIL: info@dlink.com.sg
S. AFRICA	D-LINK SOUTH AFRICA Unit 2, Parkside 86 Oak Avenue Highveld Technopark Centurion, Gauteng, Republic of South Africa TEL: 27(0)126652165 FAX: 27(0)126652186 CELL NO: 0826010806 (Bertus Moller) CELL NO: 0826060013 (Attie Pienaar) E-MAIL: bertus@d-link.co.za , attie@d-link.co.za
SWEDEN	D-LINK SWEDEN P.O. Box 15036, S-167 15 Bromma Sweden TEL: 46-(0)8564-61900 FAX: 46-(0)8564-61901 E-MAIL: info@dlink.se URL: www.dlink.se
TAIWAN	D-LINK TAIWAN 2F, No. 119 Pao-Chung Road, Hsin-Tien, Taipei, Taiwan, <u>R.O.C.</u> TEL: 886-2-29102626 FAX: 886-2-2910-1515 URL: www.dlinktw.com.tw E-MAIL: dssga@tsc.dlinktw.com.tw
U.K.	D-LINK EUROPE 4 th Floor, Merit House, Edgware Road, Colindale, London, NW9 5AB, U.K. TEL: 44-20-87315555 FAX: 44-20-8731-5511 URL: www.dlink.co.uk E-MAIL: info@dlink.co.uk
U.S.A.	D-LINK U.S.A. 53 Discovery Drive, Irvine, CA 92618 USA TEL: 1-949-788-0805 FAX: 1-949-753-7033 INFO LINE: 1-800-326-1688 BBS: 1-949-455-1779, 1-949-455-9616 URL: www.dlink.com E-MAIL: tech@dlink.com , support@dlink.com Tech Support Hours: 6 A.M. to 6 P.M. Pacific Standard Time. Monday through Friday

Registration Card

Print, type or use block letters.

Your name: Mr./Ms _____

Organization: _____ Dept. _____

Your title at organization: _____

Telephone: _____ Fax _____

Organization's full address: _____

Country: _____

Date of purchase (Month/Day/Year): _____

Product Model	Product Serial No.	* Product installed in type of computer (e.g., Compaq 486)	* Product installed in computer serial No.

(* Applies to adapters only)

Product was purchased from:

Reseller's name: _____

Telephone: _____ Fax _____

Reseller's full address: _____

Answers to the following questions help us to support your product:

1. Where and how will the product primarily be used?

☐ Home ☐ Office ☐ Travel ☐ Company Business ☐ Home Business ☐ Personal Use

2. How many employees work at installation site?

☐ 1 employee ☐ 2-9 ☐ 10-49 ☐ 50-99 ☐ 100-499 ☐ 500-999 ☐ 1000 or more

3. What network protocol(s) does your organization use ?

☐ XNS/IPX ☐ TCP/IP ☐ DECnet ☐ Others _____

4. What network operating system(s) does your organization use ?

☐ D-Link LANsmart ☐ Novell NetWare ☐ NetWare Lite ☐ SCO Unix/Xenix ☐ PC NFS ☐ 3Com 3+Open

☐ Banyan Vines ☐ DECnet Pathwork ☐ Windows NT ☐ Windows NTAS ☐ Windows '95

☐ Others _____

5. What network management program does your organization use ?

☐ D-View ☐ HPP OpenView/Windows ☐ HPP OpenView/Unix ☐ SunNet Manager ☐ Novell NMS

☐ NetView 6000 ☐ Others _____

6. What network medium/media does your organization use ?

☐ Fiber-optics ☐ Thick coax Ethernet ☐ Thin coax Ethernet ☐ 10BASE-T UTP/STP

☐ 100BASE-TX ☐ 100BASE-T4 ☐ 100VGAnyLAN ☐ Others _____

7. What applications are used on your network?

☐ Desktop publishing ☐ Spreadsheet ☐ Word processing ☐ CAD/CAM

☐ Database management ☐ Accounting ☐ Others _____

8. What category best describes your company?

☐ Aerospace ☐ Engineering ☐ Education ☐ Finance ☐ Hospital ☐ Legal ☐ Insurance/Real Estate ☐ Manufacturing

☐ Retail/Chainstore/Wholesale ☐ Government ☐ Transportation/Utilities/Communication ☐ VAR

☐ System house/company ☐ Other _____

9. Would you recommend your D-Link product to a friend?

☐ Yes ☐ No ☐ Don't know yet

10. Your comments on this product?



TO:

D-Link®