

# **Console Commands Index and Syntax**

**DSL-1500G v.A1**

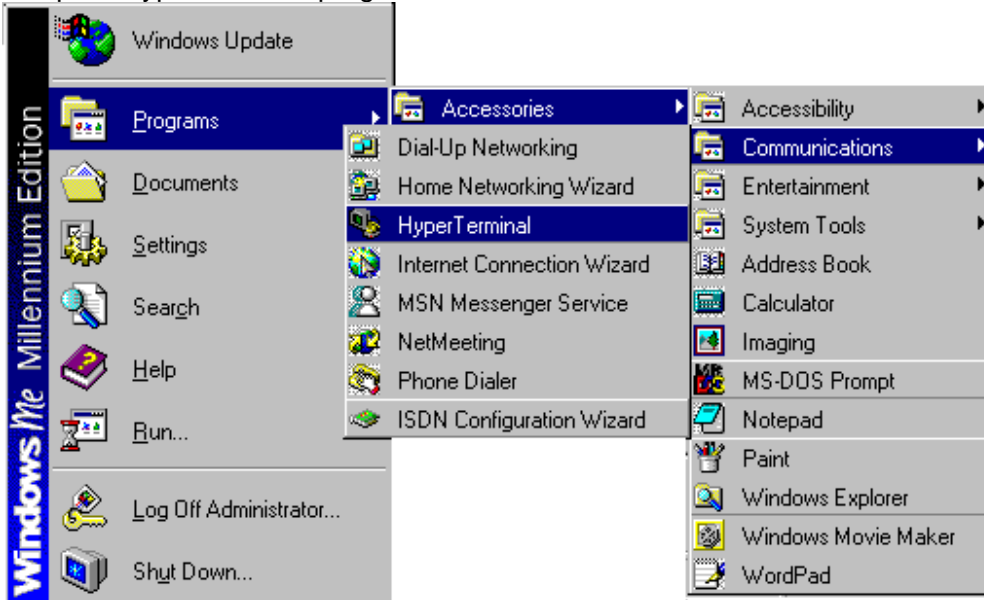
**SHDSL Router for Annex A**

**Document Revision: 0.1**  
**Firmware Version: R2.01.b2t7**

## I. Console Comment Utility

The console comment utility of DSL-1500G is HyperTerminal and following is the setup process.

### 1. Open "HyperTerminal" program



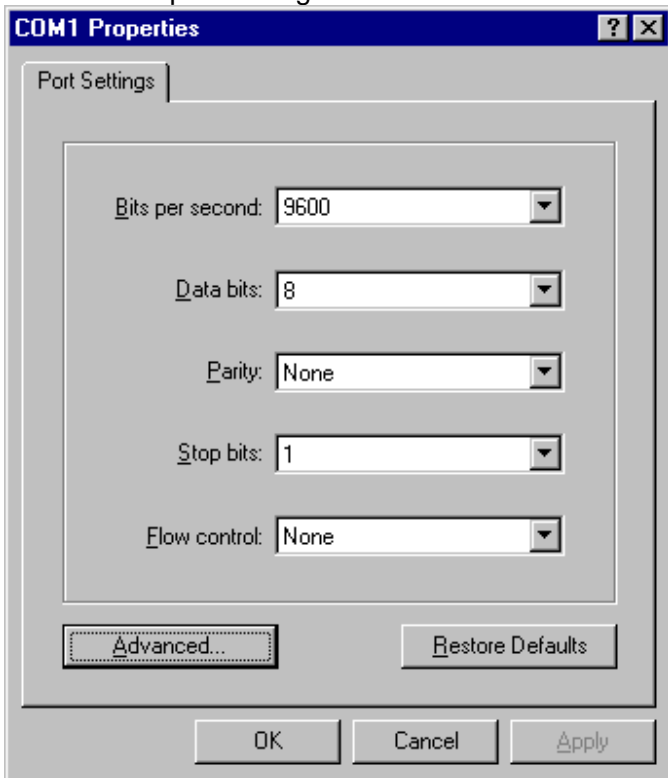
### 2. Create a new Connection



### 3. The Connect using "Com1"



### 4. The detail port setting is as below.



## II. Console Commands Index and Syntax

Commands are:

Command	Description
bridge [<command>]	- send command to bridge process
buffer [<command>]	- send command to buffer process
bun [<command>]	- send command to bun process
chips [<command>]	- send command to chips process
config [<command>]	- send command to config process
dhcpclient [<command>]	- send command to dhcpclient process
dhcpserver [<command>]	- send command to dhcpserver process
diap [<command>]	- send command to diap process
dnsrelay [<command>]	- send command to dnsrelay process
edd [<command>]	- send command to edd process
ethernet [<command>]	- send command to ethernet process
event help next previous recent show unshow	- control display of events
flashfs [<command>]	- send command to ip process
ip_filter [<command>]	- send command to ip_filter process
isfs [<command>]	- send command to isfs process
nat [<command>]	- send command to nat process
oam [<command>]	- send command to oam process
oamcli [<command>]	- send command to oamcli process
portcli [<command>]	- send command to portcli process
ppp [<command>]	- send command to ppp process
restart	- restart system
shdsl [<command>]	- send command to shdsl process
snmp [<command>]	- send command to snmp process
tftp [<command>]	- send command to tftp process
uptime	- show time system has been running
version	- show system software version
webserver [<command>]	- send command to webserver process

## Bridge:

Command	Description
config <command>	- configuration commands
device command	- Alter bridge configuration
ethertype [<port> "any" "ip" "pppoe"]	- Set or display forwarded packet types
filter	- Display filtering database
filterage [age]	- Set or display filter age time
flush [<port>]	- Flush filtering database on port(s)
info	- Show version
interface command	- Process interface command
portfilter [<source port> "all" "<dest ports>"]	- Set or display ports to forward to
spanning {command}	- Control spanning tree operation
Status	- Display bridge status
Version	- Show version

## Buffer:

Command	Description
List	- list the buffer pools
info	- [<name>] show [or set] current pool
show	- [<n>] show buffer <n> in current pool, or all buffers in use
Steal	- <n> steal <n> buffers from current pool, (0 to reset)
Version	- display version information for buffer pools

## Bun:

Command	Description
<b>Bun Command ~</b>	
help [command]	- Display summary of commands
Version	- Show software version
Build	- Show build information
config <config_spec>	- Enter manual configuration request
list config	- Display all configuration requests
list devices	- Display registered driver devices
list ports	- Display registered ports
list channels <port_name>	- Display enabled channels on a port

Command	Description
list all open channels <port_name>	- Display all open channels on a port
list spices	- Display all available spices
list objects	- Display all data objects
show system	- Show system attributes
set system	- Set system attributes
show device <device_name> ...	- Display device information
show port <port_name>	- Display port information
show channel <port_name> <channel_number>	- Display channel information
set port <port_name> / <attribute> = <value>	- Set port attribute
set channel <portname> <channelnumber> / <attribute> = <value>	- Set channel attribute
ethmode <mode>	- Display /setting ethernet connect mode
reset port <port_name>	- Reset port hardware
list classes	- List available port classes
show class <classname>	- Show class members
l2filter show	- show l2filter rule
l2filter enable <type>	- <type> : ipmcast - IP Multicast Packet pppoe - PPPoE Frame ip6mcast - IPv6 Multicast Frame ip_rarp - IP Broadcast and RARP Frame ipx - IPX Frame netbeui - NetBEUI Frame appletalk - AppleTalk Frame bridge - Bridge Management information
l2filter disable <type>	- <type> : ipmcast - IP Multicast Packet pppoe - PPPoE Frame ip6mcast - IPv6 Multicast Frame ip_rarp - IP Broadcast and RARP Frame ipx - IPX Frame netbeui - NetBEUI Frame appletalk - AppleTalk Frame bridge - Bridge Management information
l2filter save	- save configuration to file

Command	Description
l2filter trace	- on/off trace
<b>Ethernet Device ~</b>	
ethernet filter	- Show NP filter table
<b>Fluorine Driver ~</b>	
fluorine address>	- Select MII address to read/write
fluorine readr>	- Read MII register
fluorine writer> <value>	- Read MII register

### Chips:

Command	Description
Cpu	- print percentage of cpu cycles used
Debug	- enter debug process
Exit	- abort from ATMos
Info	- print out version information and machine's address
Mem	- memory used on a process-by-process basis
Stack	- stack usage on a process-by-process basis
rbrb <addr>	- read byte at address <addr>
rh <addr>	- read halfword at address <addr>
rw <addr>	- read word at address <addr>
tell <process> <string>	- send string to process using TELL message
wb <addr> <val>	- write byte <val> at address <addr>
wh <addr> <val>	- write halfword <val> at address <addr>
ww <addr> <val>	- write word <val> at address <addr>

### Config:

Command	Description
list	- List all modules registered
print [low   medium   high] [<module>]	- Print configuration
reset [<module>]	- Reset configuration to default
save	- Save configuration
resource [<process> [<resource> [<value>]]]	- Control resources
default	- restore factory default settings
version	- Display version information

## Dhcpclient:

Command	Description
config	- Displays client configuration file
help	- Gives help on available commands
pool	- Show DHCP client pool allocation stats
status	- Shows status of active lease, or [all] leases
trace	- Activates trace option(s)
untrace	- Deactivates trace option(s)
version	- Show software version

## Dhcpserver:

Command	Description
config	- Displays server configuration file and state
help	- Gives help on available commands
pool	- Show DHCP pool allocation statistics
reset	- Reset and restart DHCP server
status	- Shows status of server leases
trace	- Activates trace option(s)
untrace	- Deactivates trace option(s)
version	- Display software version
enable	- Enable DHCP server Function
disable	- Disable DHCP server Function

## Diap:

Command	Description
help	- Gives help on available commands
enable	- Enable DIAP Function
disable	- Disable DIAP Function
passwd	- Set DIAP Passwd -- passwd <password> none
status	- Show status of DIAP settings
trace	- Activates trace option(s)
untrace	- Deactivates trace option(s)
version	- Show software version



## Dnsrelay:

Command	Description
config	- Show DNS relay configuration
help	- List help on available commands
retry	- Set max number of connection/tx retries
server	- Manually specify DNS server IP address
status	- Show DNS relay connection status
trace	- Activate trace option(s)
untrace	- Deactivate trace option(s)
version	- Show DNS relay software version
state	- enabled   disabled - Enable or Disable or Show state of dnsrelay
pppauto	- enabled   disabled - Enable or Disable or Show state of pppauto

## Edd:

Command	Description
event [level]	- set event logging level
interface [id] command	- process interface command for device id
Status	- device status
Version	- display driver information

## Ethernet:

Command	Description
event [level]	- set event logging level
interface [id] command	- process interface command for device id
Status	- device status
Version	- display driver information

## Event:

Command	Description
event help	- show this help
event n next	- show next part of event buffer
event p previous	- show previous part of event buffer
event r recent	- show most recent part of event buffer
event show	- enable display of events as they occur

Command	Description
event unshow	- disable display of events as they occur

## Flashfs:

Command	Description
cat <file>	- show file contents
config	- display flash configuration
fsck	- file system check, checks FLASH integrity
id <x>	- display chip ID for device x
info	- display file system information
ls [-l]	- list FLASHFS files [more detail]
rewrite <file>	- rewrite boot area with ISFS file <file>
trace [level]	- show/set tracing level
update	- commit ISFS files to FLASH
configinfo	- Show/Set Configuration Info
version	- display version number
wipe	- irreversibly erase FLASH contents

## Ip:

Command	Description
<b>? syntax ~</b>	
help	- list commands available
help all	- list commands and their syntax
help <command>	- list syntax for command
<b>arp syntax ~</b>	
arp <cmd>	- execute arp subcommand
arp help	- list subcommands available
<b>config syntax ~</b>	
config [save]	- display config or save to flash
<b>device syntax ~</b>	
device [list]	- list interface definitions
device add <i/f> <type> <file> [mtu <size>] [<IPaddr> dhcp]	- create interface definition
device delete <i/f>	- remove interface definition

Command	Description
device flush	- remove all interface definitions
<b>disable syntax ~</b>	
disable [<i/f>]	- prevent use of interfaces or just interface <i/f>
<b>enable syntax ~</b>	
enable [<i/f> [mtu <size>] [<IPaddr>]]	- enable use of all interfaces or interface <i/f> if given - set <i/f> IP address to <IPaddr> - set MTU for interface
<b>ipatm syntax ~</b>	
ipatm <cmd>	- execute ipatm subcommand
ipatm help	- list subcommands available
<b>nat syntax ~</b>	
nat add <i/f>	- install NAT on interface
nat delete <i/f>	- uninstall NAT from interface
<b>norelay syntax ~</b>	
norelay [all   <i/f name> [<i/f name>] [forward]]	- disallow relaying between i/fs
<b>pfno syntax ~</b>	
pfno syntax	
<b>ping syntax ~</b>	
ping <host> [<tTL> [<size>]]	- request echo from <host>
<b>profile syntax ~</b>	
profile add <no(1-8)> <name> <vpi> <vci> <role(1-6)> <encap> <username> <password> <auth(1-2)> <idle> <ondemand> <ip> <mask> <gw>	- create or modify profile definition - <role> -- 1:rpppoe 2:rpppoa 3:rr1483 4:riPOA 5:bpPPoA 6:br1483 - <encap> -- 1:LLC 2:VCmux 3:Auto - <auth> -- 1:chap 2:pap - e.g. profile add 1 isp1 0 35 1 1 user password 1 0 1 192.168.1.1 255.255.255.0 192.168.1.254 - default profile values-- 1(~8) null 0 0 6 1 ppp: user password 1 0 1 wan: 0.0.0.0 0.0.0.0 0.0.0.0
profile delete <no(1-8)>	- reset profile <no> content to default values
profile flush	- reset all profile to default values
<b>relay syntax ~</b>	
relay	- list existing relays in place

Command	Description
relay all   <i/f name> [<i/f name>] [forward]	- allow relaying between i/fs
<b>rip syntax ~</b>	
rip <sub cmd>	- execute rip subcommand
rip help	- list subcommands available
<b>role syntax ~</b>	
role <1-7>	1 - Router with PPPoE 2 - Router with PPPoA 3 - Router with R1483 4 - Router with IPoA 5 - Bridge with PPPoA 6 - Bridge with R1483 7 - Router with Bridged R1483
<b>route syntax ~</b>	
route add <dom name> a.b.c.d <relay> [am:bm:cm:dm [<cost> [<timeout s>]]]	- define/edit an IP forwarding route
route delete <dom name>	- delete a route
route flush	- delete all routes
<b>routes syntax ~</b>	
routes	- show IP forwarding routes
<b>snmp syntax ~</b>	
snmp <sub cmd>	- execute snmp subcommand
snmp help	- list subcommands available
<b>stats syntax ~</b>	
stats <sub cmd>	- execute stats subcommand
stats help	- list subcommands available
<b>subnet syntax ~</b>	
subnet add <net name> <i/f name> a.b.c.d am:bm:cm:dm	- create subnet definition
subnet delete <net name>	- remove subnet definition
subnet flush	- remove all subnet definitions
<b>version syntax ~</b>	
version	- display software version no.

## Ip\_filter:

Command	Description
add help   <command>	- set up rules for filter packets
delete help   <command>	- delete set or rules for filter packets
flush help   <command>	- flush all setting for filter packets
list help   <command>	- list setting for filter packets
change help   <command>	- change globe state on/off or ifnotmatch pass/block
trace help   <command>	- trun on/off ip filter

## Isfs:

Command	Description
ls	- list ISFS files
rm <file>	- remove file from ISFS
cat <file>	- show file contents
trace [level]	- show/set tracing level
version	- displays version number

## Nat:

Command	Description
event [<level>]	- show or changeHandshaking State current event tracing level
interfaces	- list interfaces
inbound help   <command>	- set up rules for inbound packets
dmzip	- show or set DMZ ip; Syntax: dmzip xxx.xxx.xxx.xxx
dmzstate enabled   disabled	- Enable or Disable or Show status of DMZ
info	- show information about configured options
protocols	- list protocols supported via ALGs
sessions <i/f name> [summary   all]	- list active sessions
stats <i/f name> [reset]	- show statistics
version	- display ATMOS NAT version

## Oam:

Command	Description
version	- show version
config	- show configuration

Command	Description
trace <util   fault   cc   loopback   all   none >	- show / set tracing
dl	- dump contents of lookup tables

## Oamcli:

Command	Description
config	- display message saying there is no storable configuration
version	- show oamcli version
getversion	- get the oam process version
inf	- get a channels state
list	- list channels state
ccglobalaccept	- toggle auto acceptance/rejection of CC activate requests
pmglobalaccept	- toggle auto acceptance/rejection of PM activate requests
segmentset <port> <vpi> <vci> <flags>	- set up a segment sink point
segmentclear <port> <vpi> <vci> <flags>	- remove a segment sink point
faultset <port> <vpi> <vci> <flags>	- turn fault management on
faultclear <port> <vpi> <vci> <flags>	- turn fault management off
faultwatch <port> <vpi> <vci> <flags>	- turn fault monitoring on
faultunwatch <port> <vpi> <vci> <flags>	- turn fault monitoring off
faultbegin <port> <vpi> <vci> <flags>	- declare a fault state
faultend <port> <vpi> <vci> <flags>	- clear a fault state
ccset <port> <vpi> <vci> <flags>	- set up reception of activation requests
ccclear <port> <vpi> <vci> <flags>	- clear reception of activation requests
ccsetauto <port> <vpi> <vci> <flags>	- set up auto accept of activation requests
ccactivate <port> <vpi> <vci> <flags> <dir>	- send activate request
ccdeactivate <port> <vpi> <vci> <flags> <dir>	- send deactivate request
ccstart <port> <vpi> <vci> <flags> <dir>	- start transmission/reception of CC cells
ccstop <port> <vpi> <vci> <flags> <dir>	- stop transmission/reception of CC cells
loopset <port> <vpi> <vci> <flags> <llid>	- enable loopback
loopclear <port> <vpi> <vci> <flags>	- disable loopback
loop <port> <vpi> <vci> <flags> <llid>	- send a loopback cell
loopstats <port> <vpi> <vci> <flags>	- display loopback stats
pmset <port> <vpi> <vci> <flags>	- set up reception of activation requests
pmclear <port> <vpi> <vci> <flags>	- clear reception of activation requests

Command	Description
pmsetauto <port> <vpi> <vci> <flags>	- set up auto accept of activation requests
pmactivate <port> <vpi> <vci> <flags> <txblock> <rxblock> <dir>	- send activate request
pmdeactivate <port> <vpi> <vci> <flags>	- send deactivate request
pmstart <port> <vpi> <vci> <flags> <txblock> <rxblock> <dir>	- start transmission/reception of PM cells
pmstop <port> <vpi> <vci> <flags> <dir>	- stop transmission/reception of PM cells
pmstats <port> <vpi> <vci> <flags>	- display PM stats

### Portcli:

Command	Description
8khzsource [<port> [int off]]	- set source of 8kHz reference signal
errors [diff]	- show error counts
help [all <command>]	- print help information
portinfo [<port>]	- show port information
portload [<port>]	- show port loading
portmode <port> all uni30 uni31 uni40 iispuser iispnet mast gsmp ifmp	- set port mode (group of flags)
setportflag <port> all <portflag>	- set port flag
show <port>	- show detail information for a port
speed <port> [tx default <cps>][rx default cps]	- set port speed
stats [diff]	- print statistics
unsetportflag <port> all <portflag>	- clear port flag
version	- show switch CLI version
vport	- add or remove virtual ports

### Ppp:

Command	Description
bcp	- <channel> bcp stp nostp: set if BCP uses spanning tree packets over this channel
clear	- <channel> clear: clear channel to initial state
disable	- <channel> disable: disable PPP on this channel
discard	- <channel> discard [<size>]: send LCP 'discard' packet
echo	- <channel> echo [<size>]: send LCP 'echo' packet

Command	Description
enable	- <channel> enable [pppoe]: enable this channel with current settings in either pppoa or pppoe encapsulation
event	- event [<1-5>]: set/read current event report level
hdlc	- <channel> hdlc [1 0]: set HDLC headers on this channel
info	- <channel> info [all]: show information about this channel
interface	- <channel> interface <n>: attach channel to specified interface - interface <n> localip <ipaddr>: set local IP address on specified interface - interface <n> stats: show statistics on specified interface
lcpmaxconfigure	- <channel> lcpmaxconfigure [<n>]: set/read current LCP Max Configure setting
lcpmaxfailure	- <channel> lcpmaxfailure [<n>]: set/read current LCP Max Fail setting
lcpmaxterminate	- <channel> lcpmaxterminate [<n>]: set/read current LCP Max Terminate setting
llc	- <channel> llc [1 0]: set LLC headers on this channel
ports	- ports: display the available port names
pvc	- <channel> pvc [[[<port>] <vpi>] <vci>] [ip mac] [listen]: set PVC details for this channel
qos	- <channel> qos [cbr ubr] [pcr <pcr-tx> [<pcr-rx>]]: set QoS details for this channel
remoteip	- <channel> remoteip <ipaddr>: set IP address for dial-in to this channel
svc	- <channel> svc [listen addr <addr>] [ip mac]: set SVC details for this channel
theylogin	- <channel> theylogin [pap chap none]: set login required to this channel
tunnel	- <channel> tunnel <n> pptp l2tp in out: associate <channel> with tunnel number <n>
user	- user: list all user settings - user add <name> pwd <passwd> [pap chap]: create new user setting - user delete <name> all: delete user setting or all settings
version	- display version information for PPP
welogin	- <channel> welogin none   <name> <password> [pap chap]: set our login details over this channel



Command	Description
ondemand	- <channel> ondemand disable   enable [idle_secs]: set pppoe connect-on-demand and idle seconds before drop over this channel
r2516	- <channel> r2516 <service name> <ac name> : set pppoe service name and ac name over this channel
unnumber	- <channel> unnumber enable disable : enable/disable ppp unnumbered
keepalive	- <channel> keepalive <n> <m> : set keep-alive timer expired every <n> seconds for <m> times

### Reflect:

Command	Description
version	- display the module version number
list	- list configured reflectors with index numbers
new <filename> [filename]	- create new reflector using specified file
delete <index>   all	- delete specified reflector or all reflectors

### Shdsl:

Command	Description
version	- Display specified driver version
abort	- Disable ADSL modem line
info	- Get noise margin, output power, attenuation, bits per bin
rate	- Get operation mode/rate
status	- Get failure state, actual configuration
list	- List current configuration
line help   up/down	- Use up or down to enable/disable the line
role	- role <setting>: setting = co, or cpe
ratemode	- ratemode <setting>: setting = fixed, or adaptive
maxrate	- maxrate <setting>: setting = 144, 200, 392, 520, 776, 1032, 1168, 1544, 2056, 2312
psdtest	- psdtest <setting>: setting = average peak
get_es	- get_es : display error seconds
testEOC	- send EOC message ID 3 to remote side

## Snmpp:

Command	Description
<b>? syntax ~</b>	
snmp help	- list commands available
snmp help all	- list commands and their syntax
snmp help <cmd>	- list syntax for command
<b>access syntax ~</b>	
snmp access [read   write] <community> [<IP addr>]	- allow read-only or read-write access
snmp access delete <community> [<IP addr>]	- revoke specified access
snmp access flush	- revoke all access
snmp access list	- list allowed access
<b>config syntax ~</b>	
config [save]	- display config or save to flash
<b>trap syntax ~</b>	
snmp trap add <community> <IP addr> [<port>]	- add a trap destination
snmp trap delete <community> <IP addr> [<port>]	- delete a trap destination
snmp trap flush	- delete all trap destinations
snmp trap list	- list trap destinations
<b>version syntax ~</b>	
version	- display version information

## Tftp:

Command	Description
list	- list active tftp connections
version	- displays version and trace status
connect <addr   hostname>	- set IP address or host for transfers
get get <file> [<local file>]	- get file from remote host
put put <file> [remote file]	- put file onto remote host
trace [+flag][-flag][-*][help]	- set trace options