

Product Highlights

Comprehensive Management

Manage your network effectively with useful tools and features such as Batch Configuration, SNMP, and Flexible command Line Dispatch

Hassle-Free Network Management

Graphical and detailed dashboard provides a centralized and convenient way to manage and monitor your network

Extensive Device Support

Supports a large number of devices including smart and managed switches, unified access points, and wireless controllers, as well as non-D-Link devices



DV-700

D-View 7 Network Management System

Features

Simplify Management Tasks

- Supports SNMP v1, v2c, and v3
- Supports device auto-discovery
- Supports scheduled and periodic task management
- Supports event notification and event escalation
- Supports SNMP trap and syslog collection
- Supports Batch Configuration and is capable of configuring multiple devices at a time

Flexible Architecture

- Designed with a server and probe architecture
- Supports management of devices behind a firewall, NAT, or in remote sites without a VPN

Visualization

- Easy to understand and configure dashboard
- Customizable chart system for displaying data
- Support auto-generates network topology
- Support real-time device status on topology
- Support real-time device rack and panel simulation

3rd Party Device Support

- Support Smart and Managed Switches, Unified Switches, Unified Access Points, Wireless Controller, Wireless Access Point, etc.
- Support 3rd party device management by MIB Compiler and Browser

The D-View 7 Network Management System is a comprehensive standards-based management tool designed to centrally manage critical network characteristics such as availability, reliability, resilience and security in a consistent way. Flexible and versatile, D-View 7 uses cutting edge web technology to provide a comprehensive software toolbox that can be accessed without the need to install software onto the client.

Flexible Architecture

D-View 7 is organized into a server-probe architecture, which simplifies data collection across complex networks. Monitoring and configuring multiple devices at remote locations, across the Internet, or behind a NAT is no longer an issue with the D-View 7. Remotely deployed probes will automatically tunnel home, allowing for the management of devices that cannot be directly accessed using standard SNMP. When a device is selected for management, D-View 7 probes will relay the command to the devices and then report back its data to the D-View 7 server.

Simplify Network Management

D-View 7 supports various predefined configuration template which can help users manage multiple devices easily. For complex configuration, D-View 7 also has the ability to deploy CLI scripts across multiple devices simultaneously. This allows D-View 7 to support a wide area network range of configuration features and virtually any device as long as it supports reporting, monitoring, analysing and CLI settings.

With a highly customizable scheduling system, D-View 7 can allow users to assign tasks to be issued in off peak hours or any other planned maintenance time frame. Users can have the peace of mind knowing that routine maintenance task and configurations will be automatically managed and monitored by D-View 7's event notification system. D-View 7 also supports periodic task which can be run daily, weekly, monthly, etc.

Web-based management

- Software controller can be installed on a Microsoft Windows computer and accessed through any device with a web browser such as a smartphone, tablet, or computer

Multi-site management

- Multiple distributed sites can be managed from a central location
- The multi-tenant architecture provides multi-layer management authority
- Wireless Access Device connected allows access point locations, information on topology map and management features

NAT pass-through

- Controllers can manage wireless access points in remote locations even if they are behind a NAT device (router or firewall)

Captive portal and access control

- Supports local DB, external RADIUS, LDAP, POP3 and Wi-Fi passcode authentication
- Supports user access control

Auto radio frequency (RF) management

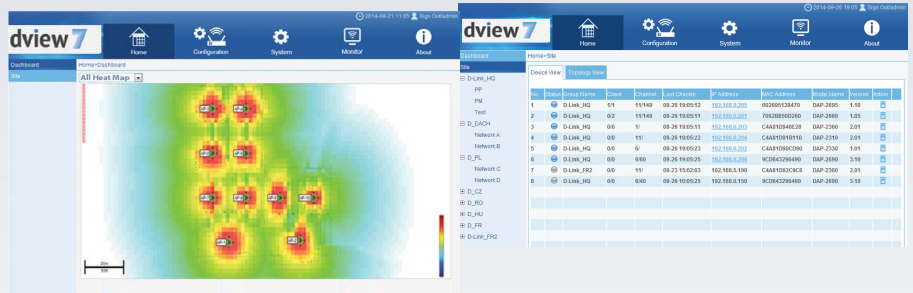
- Supports automatic channel and output power optimization
- Real-time radio frequency status
- Radio performance analyzer

Bandwidth optimization

- Optimizes wireless bandwidth

Advanced Report

- Date interval history
- Highest data usage list
- Last connection details



Extendable, Affordable Business Wireless Solution

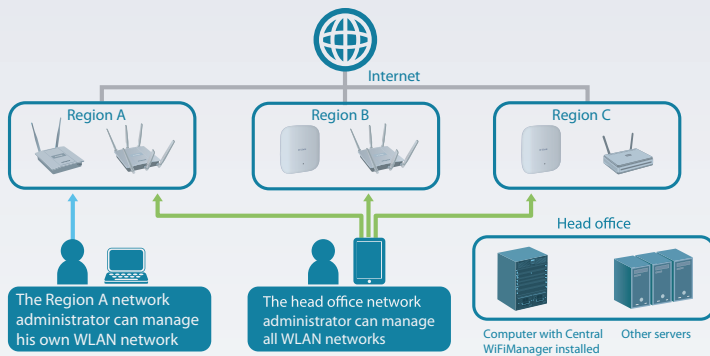
Designed from the ground up as a standalone software controller, D-Link D-View 7 is flexible, robust, and feature rich. It comes ready to run with many enhanced enterprise wireless access point (AP) features to provide a solid wireless network system for customers who need a centralized management controller. D-View 7 can be deployed onto a server running Microsoft Windows and can manage up to 500 APs without an additional license charge. D-View 7 currently supports 6 different models of D-Link Access Points.

Robust Security and Management Tools

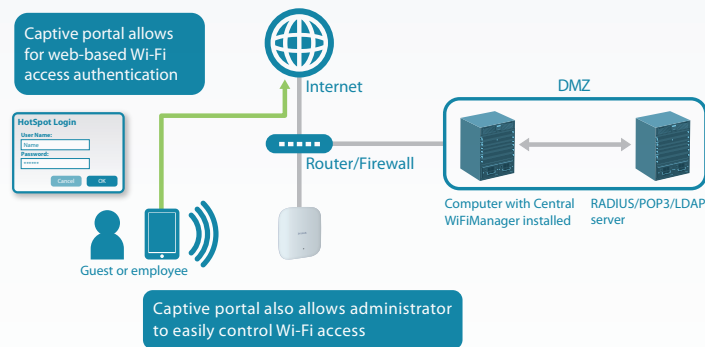
The D-View 7 Network Management System supports multi-site deployment management as well as multi-tenancy management. This allows network administrators to provide different management authorities between head and regional offices, and allows service providers to offer a managed wireless network for their customers. Sites can be logically separated with their own configuration, access security, network map, and statistics. Auto-generates network topology maps and periodically polls network devices. The map of the topology view can be modified(Add, Edit, Delete). Select this option image formats supported are JPG, JPEG, GIF and PNG. For example, a network operations manager could pre-configure APs before dispatching them to regional offices. He can then manage all of the APs on an enterprise intranet, while allowing local administrators to manage APs that are only present on their local network. The service provider can simply send a pre-configured AP to a customer and then remotely manage the customer's wireless network access and security.

Manage Third-party Devices

Network administrators can customize the SVID and related information of virtually any 3rd party device which lets D-View 7 identify many third party devices and manage them. D-View 7 can then check the health status of those devices, issue CLI commands, and do the standard management and monitoring. Detected foreign wireless access points seen on the Network Management System. Combined with the new D-View 7 graphical dashboard, network administrators can get near real-time feedback on the status of their network.

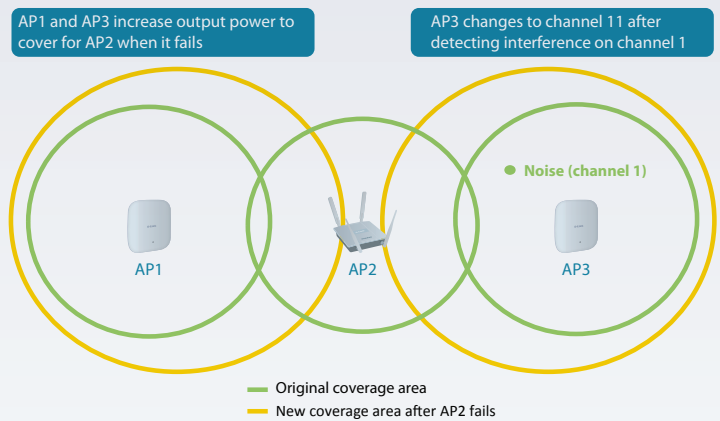


For wireless access, D-Link SMB APs can support 8 SSIDs per radio, which means administrators can use one SSID to create a guest network for visitors. D-View 7 expands on that built-in feature and allows for multiple user authentications. Access controls can be configured per SSID as well, allowing network administrators to configure separate internal networks for different subnets. This means that more advanced value added services such as a captive portal or Wi-Fi hotspots can be used to help manage wireless network traffic.

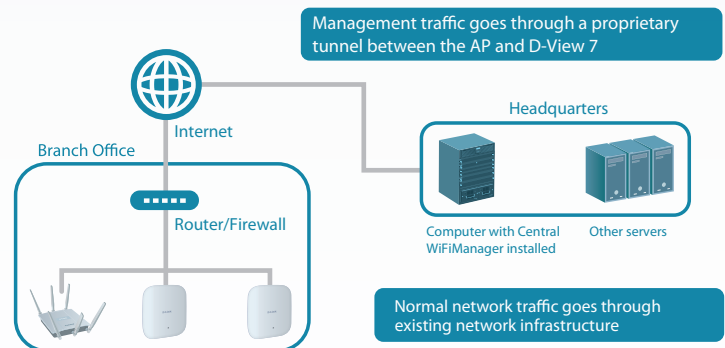


Flexible Expansion and Deployment Options

Unlike traditional hardware controller solutions for managing wireless access points, D-View 7 has a much lower initial investment cost as it comes bundled with many D-Link access points and there are no per access point license charges. With the simple to use installation tool, it is easy to expand the wireless network in the future. Adding devices to D-View 7 is done automatically when new access points are discovered on the network, allowing new devices to be quickly managed and deployed. D-View 7 also automatically manages RF output for multiple access points, optimizing the number of available wireless channels and coverage. This results in reduced channel interference and provides faster total bandwidth throughput and connection reliability. By optimizing the coverage area and connection quality, D-View 7 enables network administrators to provide better wireless service at a lower deployment cost, resulting in a higher return on investment.



Deploying D-View 7 is also much simpler compared to traditional hardware controller solutions as it can be installed on any server running a recent version of Microsoft Windows. D-View 7 software operates transparently on the network meaning the access point can be deployed anywhere in a customer's Layer 2/3 environment. Management traffic to and from the target access points will go through an authorized tunnel to D-View 7 while normal network traffic will go through existing networking infrastructure unimpeded. The D-View 7 management interface is also remotely accessible via its built-in web server. Administrators can use a web browser to connect to computers with D-View 7 installed to manage their WLAN network and wireless access points from anywhere.



Enhanced Trap and Syslog Analysis

D-View 7 also functions as a trap and syslog server which can collect all of the trap or syslog data from multiple devices across a network. This gives network administrators a centralized place to collect important data, which can then be searched easily from within one year retrospective recording D-View 7. The advanced search system lets network administrators set keyword combinations, and generate alarms based on events that are reported in the trap or syslog feature. It can also let network administrators set key words, keyword combinations, and generate alarms based on reported trap or syslog.

Technical Specifications

General

Architecture	<ul style="list-style-type: none"> • Supports standard server client web architecture • Supports multi-tenant architecture 	<ul style="list-style-type: none"> • Supports probe design to collect data from remote site without VPN or behind NAT
User Management	<ul style="list-style-type: none"> • Support read-write and read-only privileges by modules 	
Internationalization	<ul style="list-style-type: none"> • Supported languages: <ul style="list-style-type: none"> • English • Simplified Chinese • Traditional Chinese 	

Discovery

Device Discovery	<ul style="list-style-type: none"> • Support SNMP v1, v2c, v3 scan • Support IPv4/IPv6 address range scan 	<ul style="list-style-type: none"> • Support smart scan by neighborhood • Support discover across LAN by probe
Link Discovery	<ul style="list-style-type: none"> • Support LLDP, FDB based link discovery 	
Auto Discovery	<ul style="list-style-type: none"> • Support periodically discovery with specific time period 	

Inventory

Inventory Management	<ul style="list-style-type: none"> • Support inventory and devices export 	<ul style="list-style-type: none"> • Support device grouping by labels, a device can belong to multiple labels
----------------------	------------------------------------------------------------------------------------------	-------------------------------------------------------------------------------------------------------------------------------

Monitoring

Dashboard	<ul style="list-style-type: none"> • Support overall system and product summary for wired or wireless devices 	<ul style="list-style-type: none"> • Support customized dashboard
Sensor	<ul style="list-style-type: none"> • Support following methods to data collection <ul style="list-style-type: none"> • SNMP • PING 	
Topology View	<ul style="list-style-type: none"> • Support auto-topology generation • Support customized topology generation • Support devices status display • Support link status display • Support different structure of topology (tree type, start type) 	<ul style="list-style-type: none"> • Support multi-layer topology for following views • Support customized background image overlay for following views
Panel View	<ul style="list-style-type: none"> • Support panel and LED status of switches 	<ul style="list-style-type: none"> • Support panel view with stacking switches
Status Polling	<ul style="list-style-type: none"> • Support multiple polling methods <ul style="list-style-type: none"> • Ping • SNMP • Support customized polling time for each devices or by group 	<ul style="list-style-type: none"> • RF channel usage rate, RX/TX usage rate and general informations of all wireless access devices
Event & Notification	<ul style="list-style-type: none"> • Support customized criteria or threshold to trigger the event based on following rules <ul style="list-style-type: none"> • Value Match • Keyword Match • Keyword Combination Match 	<ul style="list-style-type: none"> • Support customized escalation rules • Support email notification to defined users
Device Configuration	<ul style="list-style-type: none"> • Support pre-defined template to quick config single or multiple devices 	<ul style="list-style-type: none"> • Support script dispatch with variables (such as IPv4 and IPv6, system name, etc.) defined by each devices
Firmware Upgrade	<ul style="list-style-type: none"> • Support firmware upgrade for single or multiple devices 	
Config Backup / Restore	<ul style="list-style-type: none"> • Support one-time scheduled config backup for single or multiple devices • Support periodically scheduled config backup for single or multiple devices 	<ul style="list-style-type: none"> • Support config restore by system-stored or user by user-uploaded file for single or multiple devices
Task Management	<ul style="list-style-type: none"> • Support one-time scheduled task 	<ul style="list-style-type: none"> • Support periodically scheduled task

DV-700 D-View 7 Network Management System

Advanced Report & Information		
Report	<ul style="list-style-type: none"> • Selectable file format PDF or CSV • E-mail function • Radio performance retrospective reports • Easy report interface • Last connection detail <ul style="list-style-type: none"> - Connection time - Data usage - Ap information 	<ul style="list-style-type: none"> • History Report <ul style="list-style-type: none"> - User - Location - Devices (AP, devices) - Management System • Radio link status
Radio State Information	<ul style="list-style-type: none"> • Channel occupancy 	<ul style="list-style-type: none"> • Connected client number
Wireless Features		
RF Management and Control	<ul style="list-style-type: none"> • Auto Output Power Control 	<ul style="list-style-type: none"> • Self-healing around failed APs • Auto Channel
Multiple SSIDs per Radio(AP)	<ul style="list-style-type: none"> • 16 	
Advanced Wireless Features	<ul style="list-style-type: none"> • Band steering • L2 roaming 	<ul style="list-style-type: none"> • Bandwidth optimization
WIDS System	<ul style="list-style-type: none"> • Rogue AP detection 	
WLAN Management		
Maximum APs per Device (Controller)	<ul style="list-style-type: none"> • 500 	
WLAN Management Features	<ul style="list-style-type: none"> • AP grouping • Multi-tenancy 	<ul style="list-style-type: none"> • Visualized topology • NAT pass-through
AP-Controller Connection Mode	<ul style="list-style-type: none"> • Bridge mode 	
User Authentication		
Guest Portal	<ul style="list-style-type: none"> • Captive portal 	
Authentication Method	<ul style="list-style-type: none"> • Local • POP3 • RADIUS 	<ul style="list-style-type: none"> • LDAP • Voucher
Hotspot Features	<ul style="list-style-type: none"> • Built-in support for voucher-based authentication • Built-in hotspot manager for voucher creation and guest management 	<ul style="list-style-type: none"> • Rate limiting and bandwidth control for guest and hotspot portal
System Management		
Management Interface	<ul style="list-style-type: none"> • Web-based user interface 	
Minimum System Requirements	<ul style="list-style-type: none"> • Computer running Microsoft Windows 7 or Windows Server 2008/2012 	
Online Check	<ul style="list-style-type: none"> • Firmware 	<ul style="list-style-type: none"> • Module
Scheduling	<ul style="list-style-type: none"> • Firmware update 	<ul style="list-style-type: none"> • Configuration update

DV-700 D-View 7 Network Management System

Minimum System Requirements (Server System)	
CPU	• Dual Core 3.0 GHz or above
DRAM	• 4 GB or above
Hard Drive Space	• 120 GB or above
OS	<ul style="list-style-type: none"> • Windows 7 64 Bits (Professional Edition or above) • Windows 8 64 Bits (Professional Edition or above) • Windows Server 2008 64 Bits (Standard Edition or above) • Windows Server 2012 64 Bits (Standard Edition or above) • Only support 64 bits OS, English Version
Minimum System Requirements (Probe System)	
CPU	• Single Core 2.0 GHz or above
DRAM	• 2 GB or above
OS	<ul style="list-style-type: none"> • Windows XP 32 or 64 bits • Windows 7 32 or 64 bits • Windows 8 32 or 64 bits • Windows Server 2008 32 or 64 bits • Windows Server 2012 32 or 64 bits • Support both 32 or 64 bits OS, English Version
Minimum System Requirements (Client System)	
CPU	• Single Core 2.0 GHz or above
DRAM	• 2 GB or above
Browser	• Chrome, Firefox, and IE 10 or above
Order Information	
<i>Part Number</i>	<i>Description</i>
DV-700	D-View 7 Network Management System

Updated 11/27/14