
D-VIEW 5.1 QUICK INSTALL

This section gives systems requirements and explains installation procedures.

System Requirements

D-View 5.1 can be installed and operated on a computer that meets the following minimum requirements:

- CPU: 550 MHz
- DRAM: 256MB
- Hard Drive Available space: 100MB
- Ethernet Adapter: 10BASE-T
- Operating System: Windows 2000 or Windows XP
- Windows Component: Simple Network Management Protocol (SNMP)
- Access 2000

Installation

Note: To install D-View5.1 you must use the Ethernet adapter provided with the software.

If you do not use the Ethernet adapter provided with the software installation will fail.

The following is a guide showing how to install D-View 5.1 and get it up and running:

Step1

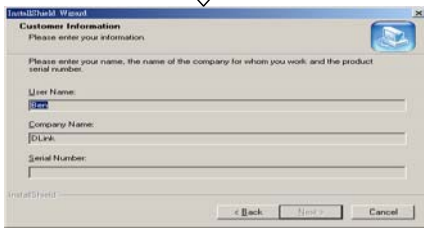


Step2

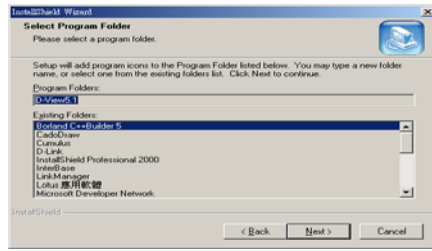


Step 3

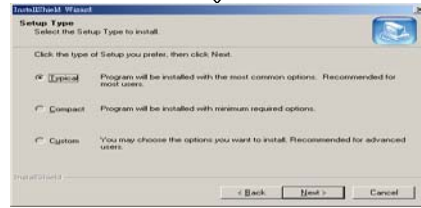
Input Serial Number



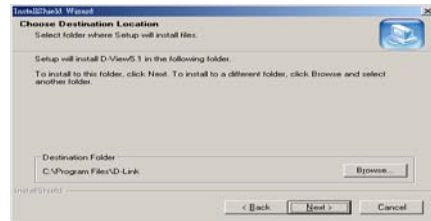
Step 4



Step 5



Step 6

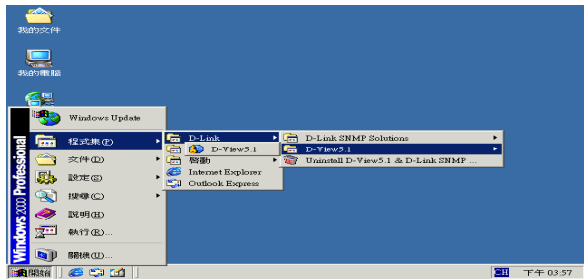


Step 7 Finish



Start Run

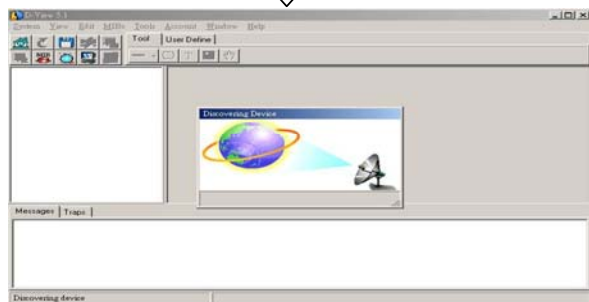
Step1



Step2



Step3



D-VIEW 5.1 KURZANLEITUNG FÜR DIE INSTALLATION

Dieser Abschnitt enthält Systemanforderungen und eine Installationsanleitung.

Systemanforderungen

D-View 5.1 kann auf Computern installiert und verwendet werden, die folgende Anforderungen erfüllen:

- CPU: 550 MHz
- DRAM: 256 MB
- Verfügbarer Platz auf der Festplatte: 100 MB
- Ethernet-Anschluss: 10 Base-T
- Betriebssystem: Windows 2000 oder Windows XP
- Windows-Komponente: Simple Network Management Protocol (SNMP)
- Access 2000

Installation

Hinweis: Zur Installation von D-View 5.1 müssen Sie die Ethernet-Karte verwenden, die mit der Software mitgeliefert wurde. Falls diese Ethernet-Karte nicht verwendet wird, schlägt die Installation fehl.

Im Folgenden finden Sie eine Anleitung zur Installation von D-View 5.1 und Hinweise zur Einrichtung des Programms:

Step1

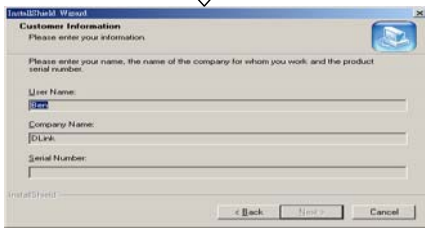


Step2

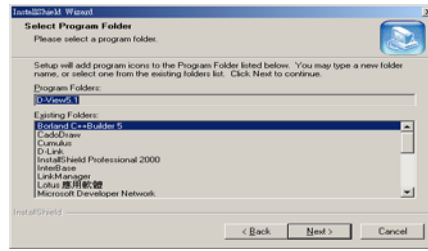


Step 3

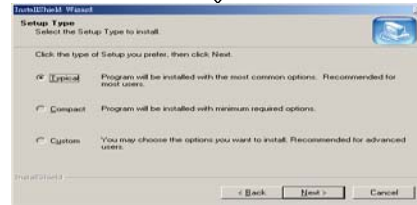
Input Serial Number



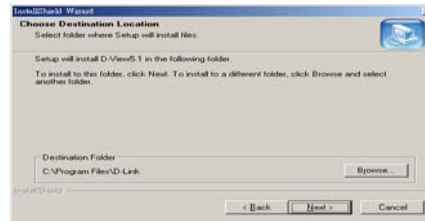
Step 4



Step 5



Step 6

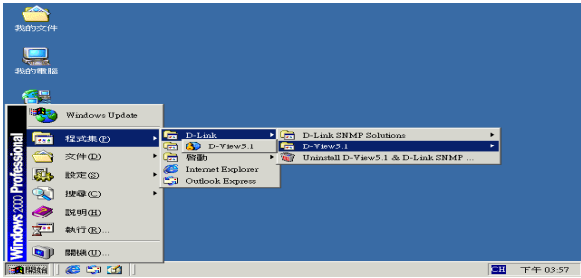


Step 7 Finish

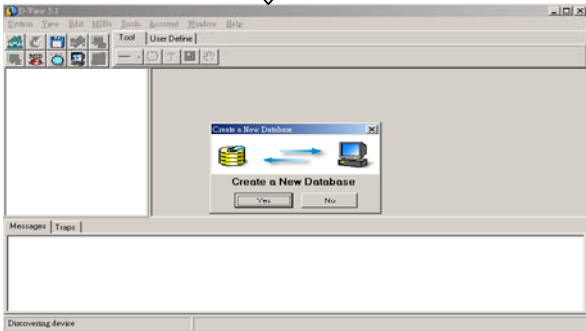


Programm starten

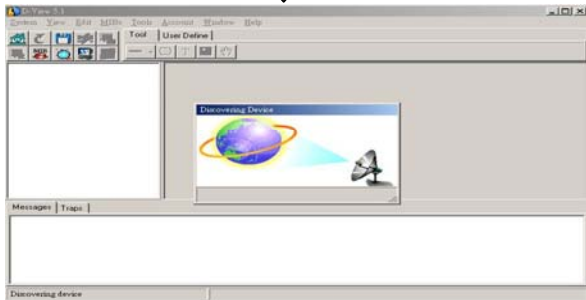
Step1



Step2



Step3



INSTALLATION RAPIDE DE D-VIEW 5.1

Ce document vous indiquera les conditions requises du système ainsi que les procédures d'installation de D-View 5.1.

Conditions requises du système

D-View 5.1 peut être installé et fonctionner sur un ordinateur qui présente les conditions minimum requises, à savoir :

- CPU: 550 MHz
- DRAM: 256MB
- Espace disponible sur le disque dur: 100MB
- Adaptateur Ethernet: 10BASE-T
- Système d'exploitation: Windows 2000 ou Windows XP
- Composant Windows: SNMP (Simple Network Management Protocol)
- Access 2000

Installation

Pour installer D-View 5.1, vous devez utiliser l'adaptateur Ethernet fournit avec le logiciel. Si vous ne l'utilisez pas, l'installation échouera.

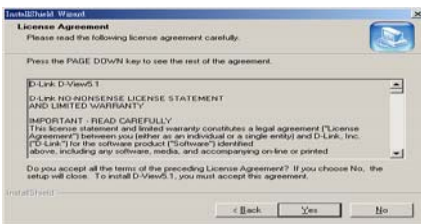
Le guide suivant vous montrera comment installer D-View 5.1 et comment le lancer.

INSTALLATION

Step 1

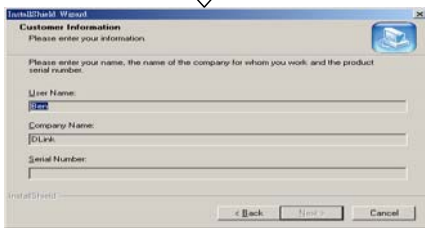


Step 2

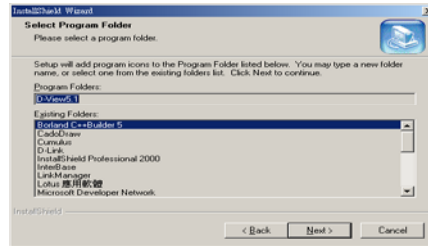


Step 3

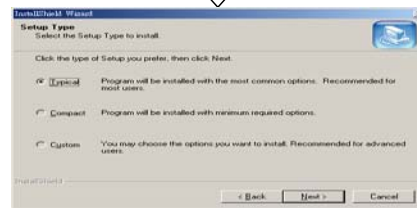
Input Serial Number



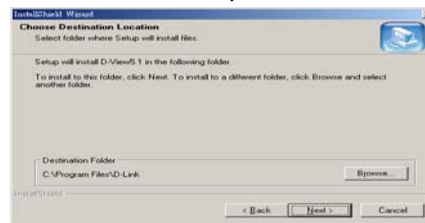
Step 4



Step 5



Step 6

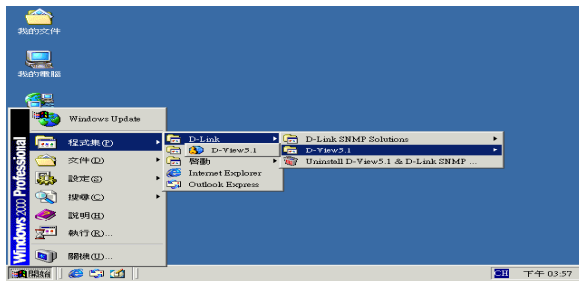


Step 7 Finish

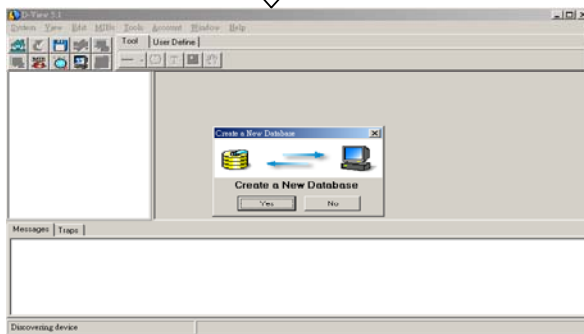


LANCMENT

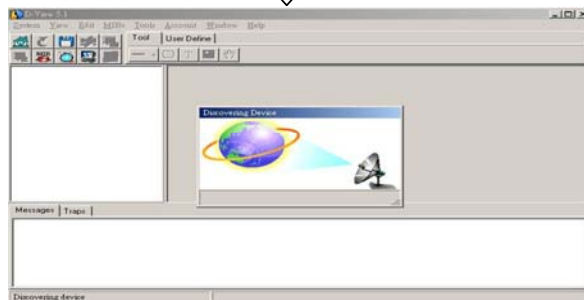
Step1



Step2



Step3



D-VIEW 5.1 INSTALACIÓN RÁPIDA

Esta sección nos describe los requisitos del sistema y el procedimiento de instalación.

Requisitos del sistema

D-View 5.1 puede ser instalado y opera en una computadora con los siguientes requisitos mínimos:

- CPU: 550 MHz
- DRAM: 256MB
- Espacio disponible en disco duro: 100MB
- Adaptador Ethernet: 10BASE-T
- Sistema Operativo: Windows 2000 o Windows XP
- Componentes Windows: Simple Network Management Protocol (SNMP)
- Access 2000

Instalación

Nota: Para instalar D-View 5.1 debe usar el adaptador Ethernet proporcionado con el software, en caso contrario, la instalación del software fallará.

Los pasos que siguen a continuación muestran como instalar D-View 5.1:

Step1

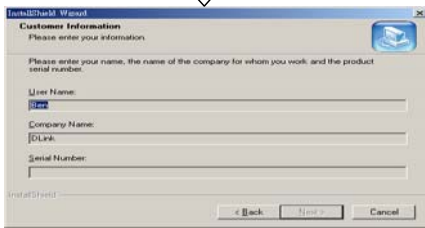


Step2

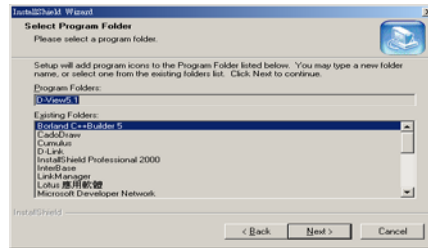


Step 3

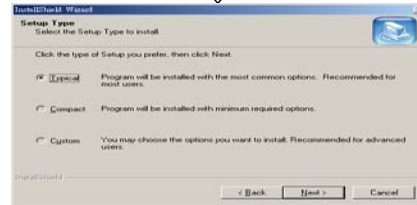
Input Serial Number



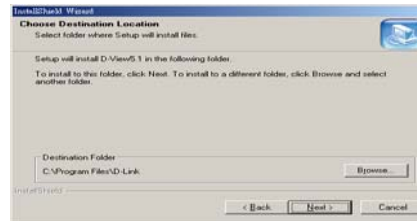
Step 4



Step 5



Step 6

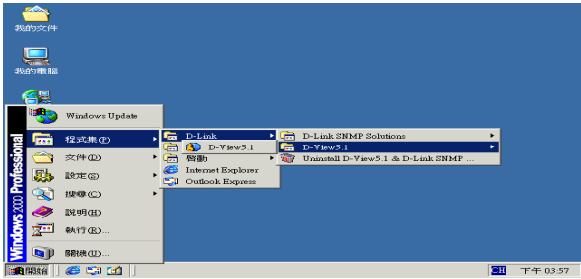


Step 7 Finish

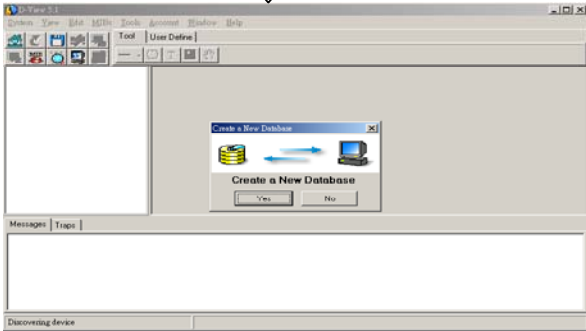


Ejecución

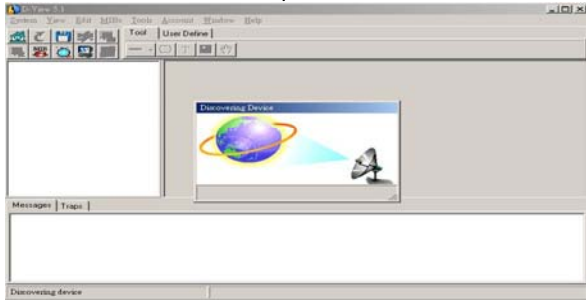
Step1



Step2



Step3



D-VIEW 5.1 INSTALLAZIONE RAPIDA

Questo paragrafo fornisce i requisiti di sistema e spiega quali sono le procedure di installazione

Requisiti di Sistema

D-View 5.1 può essere installato e funzionare su di un computer che rispetti i seguenti requisiti minimi:

- CPU: 550 MHz
- DRAM: 256MB
- Spazio disco fisso necessario: 100MB
- Scheda di rete Ethernet : 10BASE-T
- Sistema Operativo : Windows 2000 o Windows XP
- Componenti Windows: Simple Network Management Protocol (SNMP)
- Access 2000

Installazione

Nota: Per installare D-View5.1 è necessario utilizzare la scheda di rete Ethernet fornita con il software. Se non viene utilizzata la scheda di rete fornita con il software, l'installazione potrà fallire.

La presente guida illustra come installare D-View 5.1 e come avviare il programma:

Step1

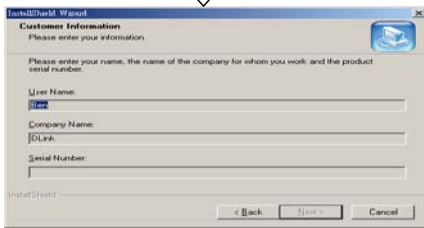


Step2

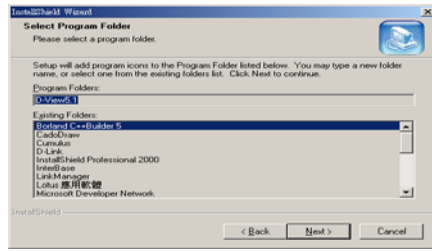


Step 3

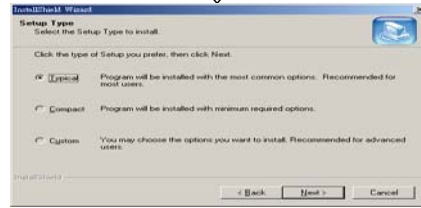
Input Serial Number



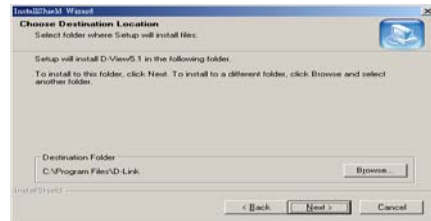
Step 4



Step 5



Step 6

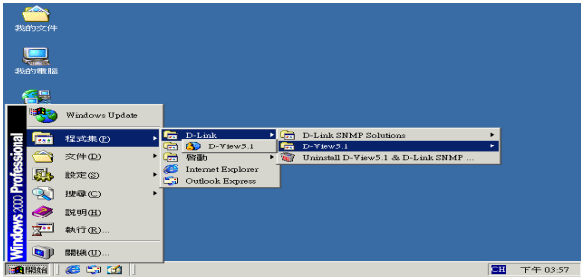


Step 7 Finish

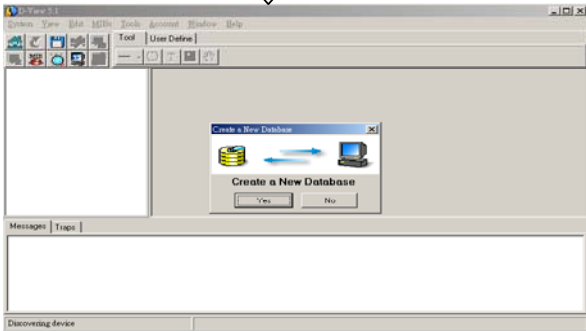


Avvio Programma

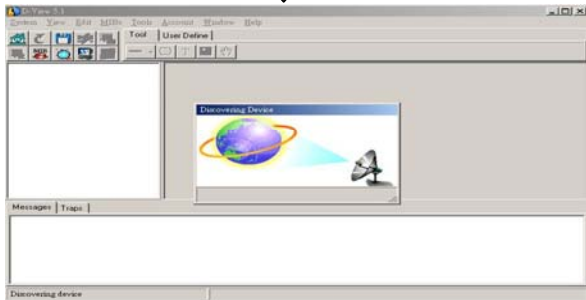
Step1



Step2



Step3



D-VIEW 5.1 БЫСТРАЯ УСТАНОВКА

Данный раздел содержит системные требования и объясняет процедуру инсталляции.

Системные требования

D-View 5.1 может быть установлен и работать на компьютере, удовлетворяющим следующим минимальным требованиям:

- Центральный процессор: 550 МГц
- Динамическое ОЗУ: 256 МБ
- Свободное пространство на жестком диске: 100МБ
- Адаптер Ethernet: 10BASE-T
- Операционная система: Windows 2000 или Windows XP
- Компоненты Windows: Simple Network Management Protocol (SNMP)
- Access 2000

Инсталляция

Замечание: Для установки D-View5.1 необходимо использовать сетевой адаптер Ethernet поставляемый вместе с программным обеспечением. Если используется адаптер, отличный от поставляемого с D-View5.1, то установить программу нельзя.

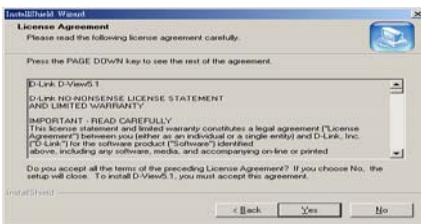
Ниже приведена пошаговая инструкция по инсталляции и запуску D-View5.1:

INSTALLATION

Step 1

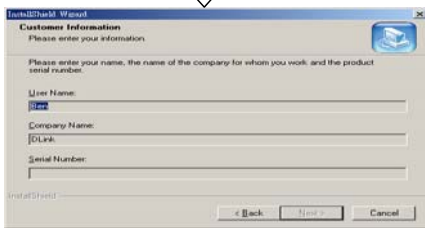


Step 2

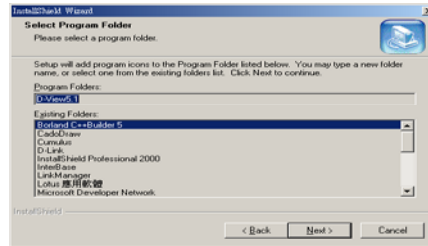


Step 3

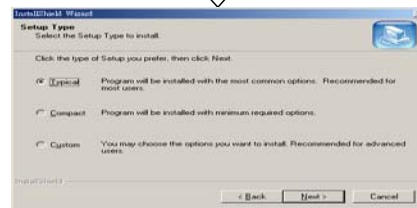
Input Serial Number



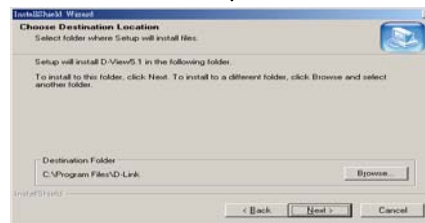
Step 4



Step 5



Step 6

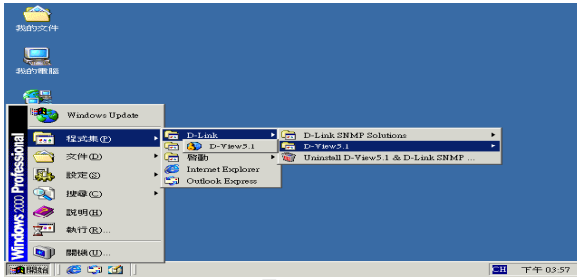


Step 7 Finish

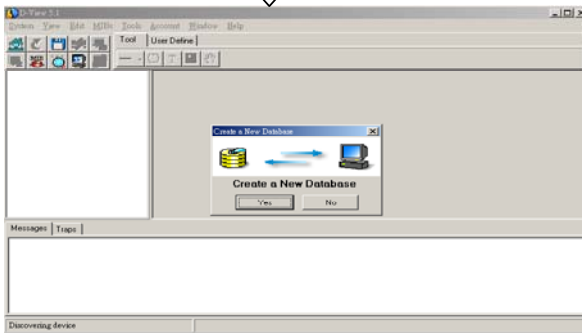


LANCEMENT

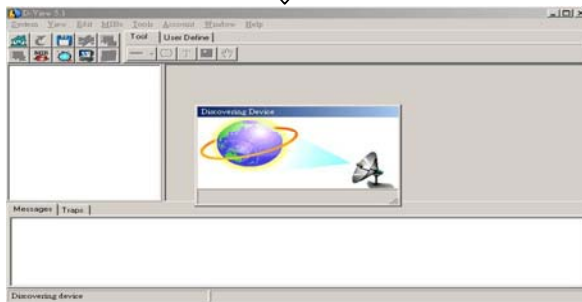
Step1



Step2



Step3



D-VIEW 5.1 快速安裝手冊

這份手冊內容主要是提供系統需求及安裝步驟.

系統需求

安裝 D-View 5.1 時,必須滿足系統需求如下:

- CPU: 550 MHz
- DRAM: 256MB
- 硬碟空間: 100MB
- 網路卡: 10BASE-T
- 作業系統: Windows 2000 or Windows XP
- Windows 元件: Simple Network Management Protocol (SNMP)
- Access 2000

系統安裝

附註: 在您安裝之前, 必須安裝軟體附贈之網路卡. 否則將無法安裝

以下為 D-View 5.1 之安裝程序

Step1

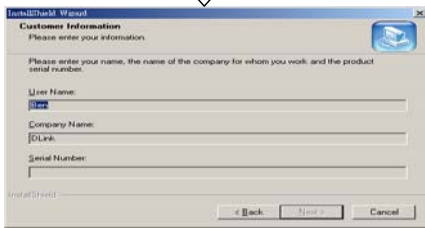


Step2

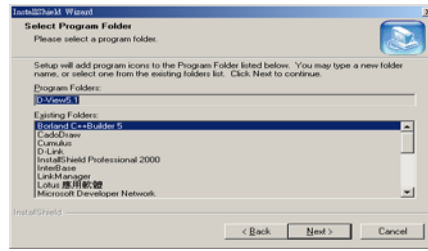


Step 3

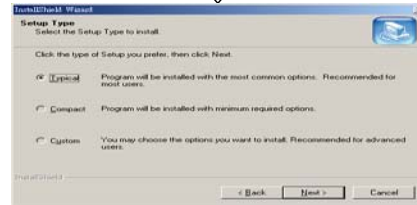
Input Serial Number



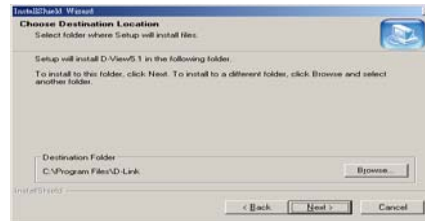
Step 4



Step 5



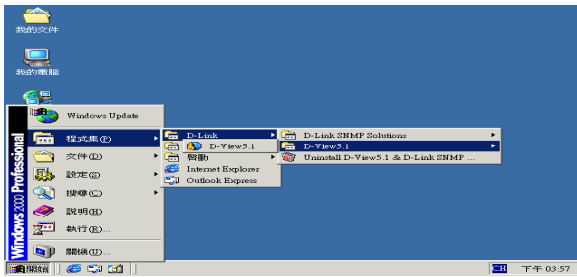
Step 6



Step 7 Finish



Step1



Step2



Step3

