

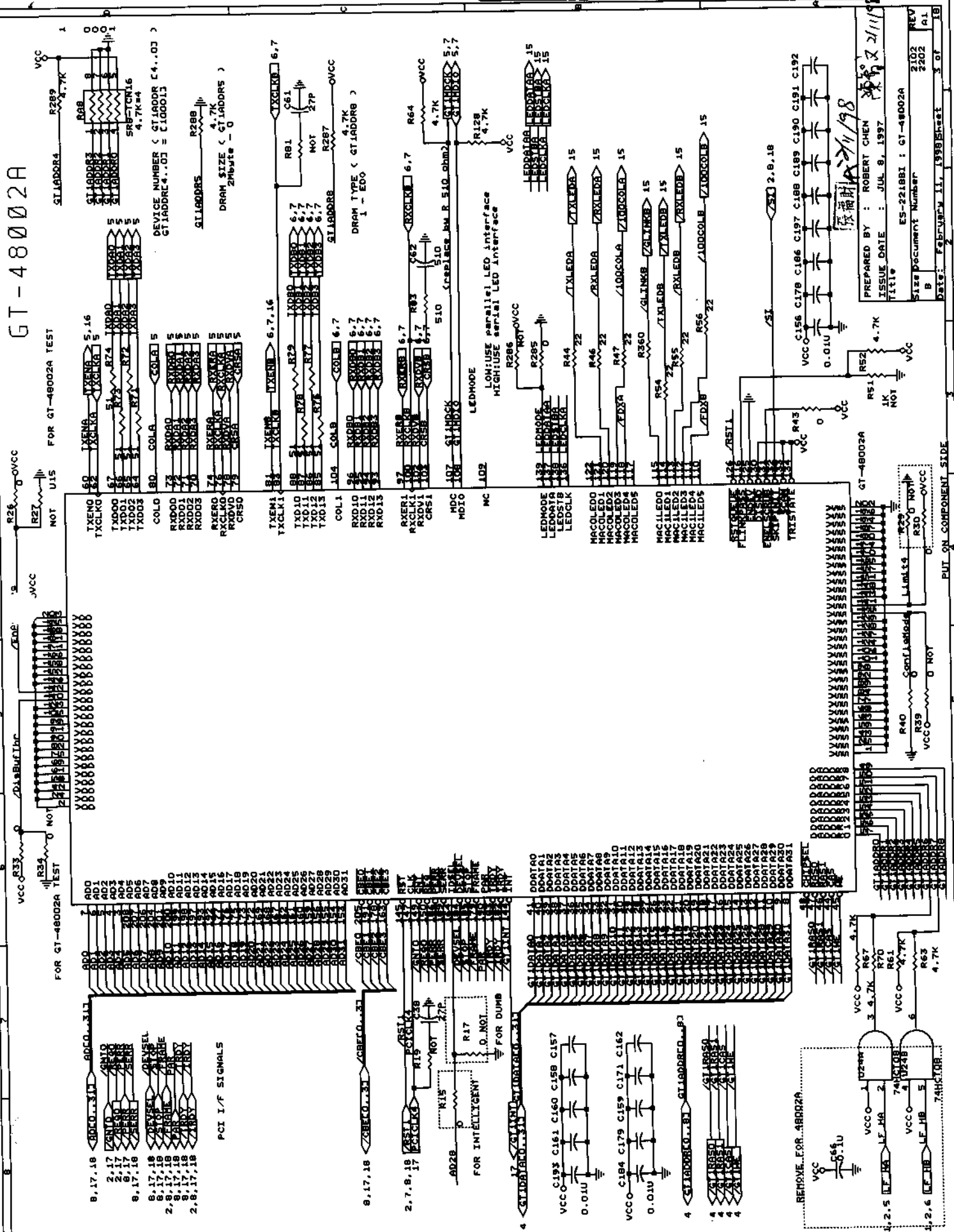
D-Link
Corporation

DOC. NO.: 305DES2218--A1-

Approved: [Signature] 2/11/98
Checked: [Signature] 2/11/98
Title: ES-2218BI: PCI ARBITER & RESET CNT
Size: 2102
Rev: 2302
Date: February 11, 1998 Sheet 2 of 18

PREPARED BY: ROBERT CHEN
ISSUE DATE: JUL 8, 1997
ES-2218BI: PCI ARBITER & RESET CNT

GT-48002A



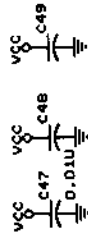
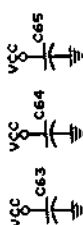
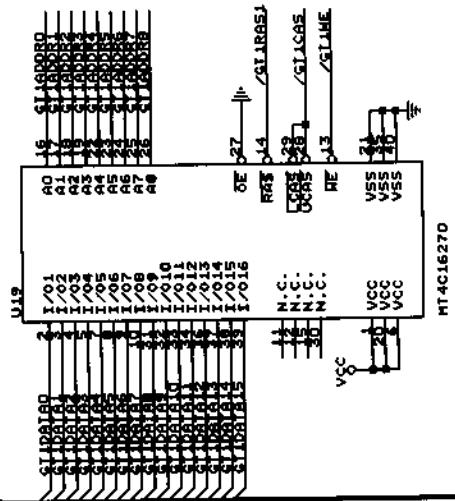
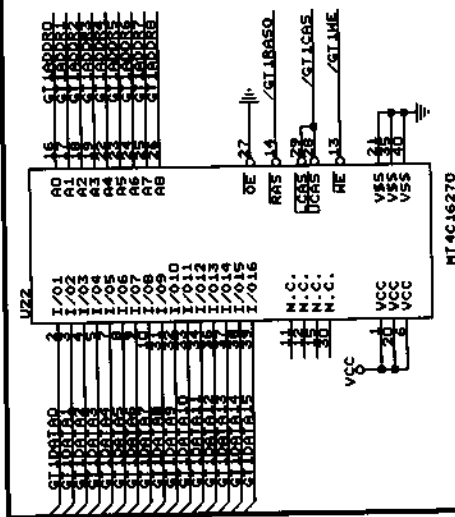
86/11/198

PREPARED BY : ROBERT CHEN		REV
ISSUE DATE : JUL 8, 1997		2202
Title		3 of 18
ES-2218BI : GT-48002A		
Size		2102
Document Number		2202
B		AI
Date: February 11, 1998		Sheet
2		3 of 18

PUT ON COMPONENT SIDE

FOR GT-48002A

3 <GT48002A> 311



USE 2K BYTE MEMORY,
MEMORY IS 60ns EDO RAM

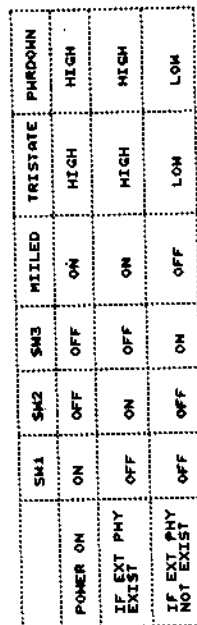
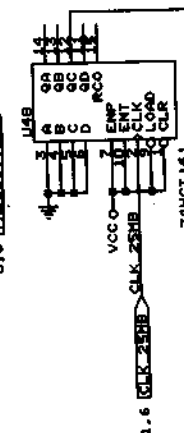
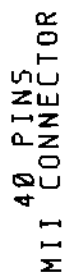
D-Link Corp.

DOC. NO.: 305DES2218--A1-

APPROVED: 7/11/98
CHECKED: 7/11/98
PREPARED BY: ROBERT CHEN
ISSUE DATE: JUL 8, 1997
Title: ES-2218BT: DRAM FOR GT-48002A
Size Document Number: 2102
REV: 2202
Date: February 11, 1998
Sheet: 4 of 18



100M PORT1

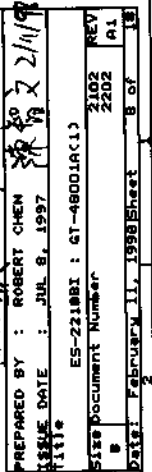


MIT CONNECTOR & CONTROL CKT.

D-Link

Approved: 張福財	Prepared by: ROBERT CHEN	Issue Date: JUL 8, 1997	Rev: 2102
Checked: 張福財	ES-221981	100N HII CONN. & CONTROL CK7	2202
	Size document Number		A1
Version: A	Sheet 7 of 18		

DOC. NO.: 305DES2218--A1-

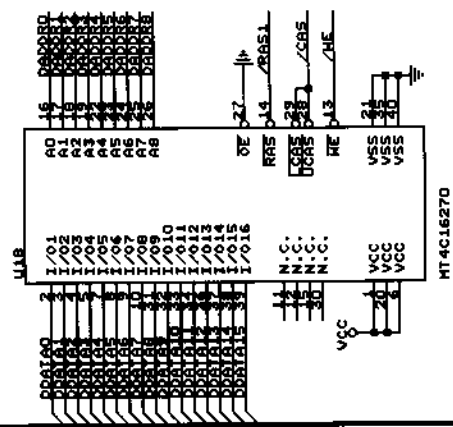
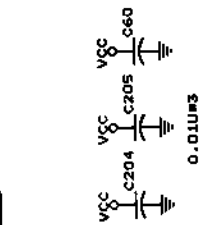


FOR GT-48001A(1)

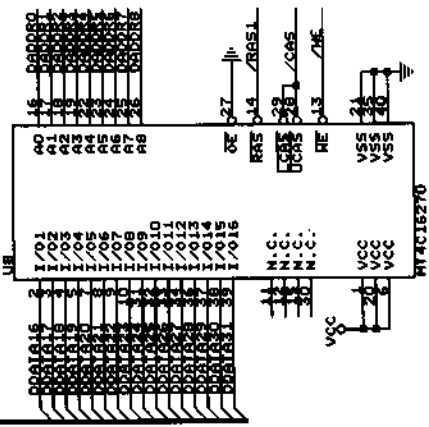
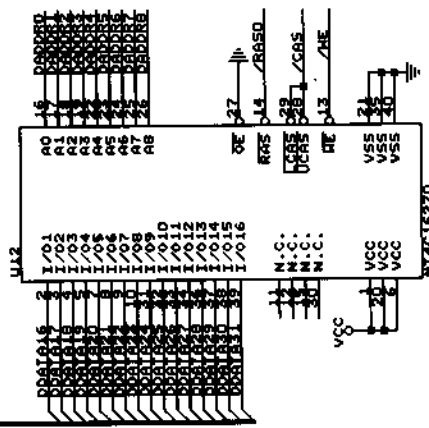
8 D00RQ0..B1 D00RQ0..B1

8 D00RQ0..B1 D00RQ0..B1

8 R050 /R050
8 C05 /C05
8 R051 /R051



MT4C16270



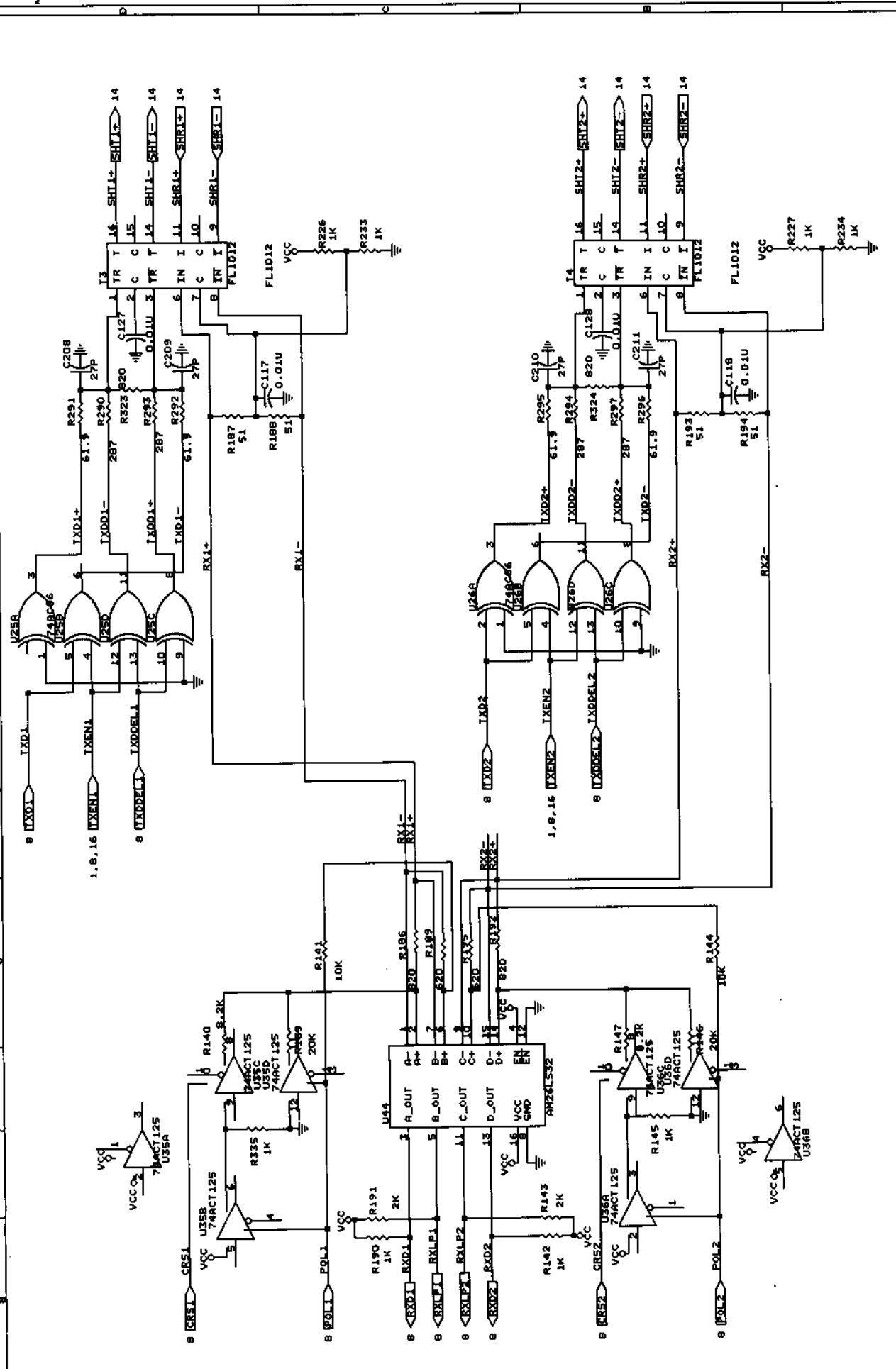
MT4C16270

USE 2M BYTE MEMORY.
FOR GT-48001(A)
MEMORY IS 60ns EDO RAM

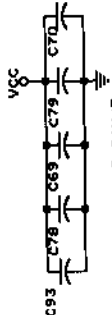
D-Link Corp.

Approved: 张福明 2/11/98
Checked: 张福明 2/11/98
Title: ES-221821 : DRAM FOR GT-48001A(1)
Version: A
Doc. No.: 305DES2218--A1-
Prepared By: ROBERT CHEN
Issue Date: JUL 9, 1997
Rev: 2102
Rev: 2202
Rev: 241190
Date: February 11, 1998 Sheet 9 of 18

10M PORT3 & PORT4



D-Link [®] Corp.		Approved: 3/11/98	Prepared by: ROBERT CHEN
DOC. NO.: 305DES2218--A1-		Checked: 3/11/98	Issue Date: JUL 8, 1997
		Version: A	Title: ES-2218B1: 10M PORT3 & PORT4 CKT
			Size: 2102
			REV: 2202
			REV: A1
			REV: 10 OF 18



10M PORT5 & PORT6

D-Link
Corporation

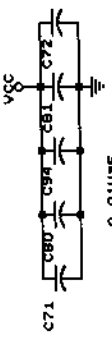
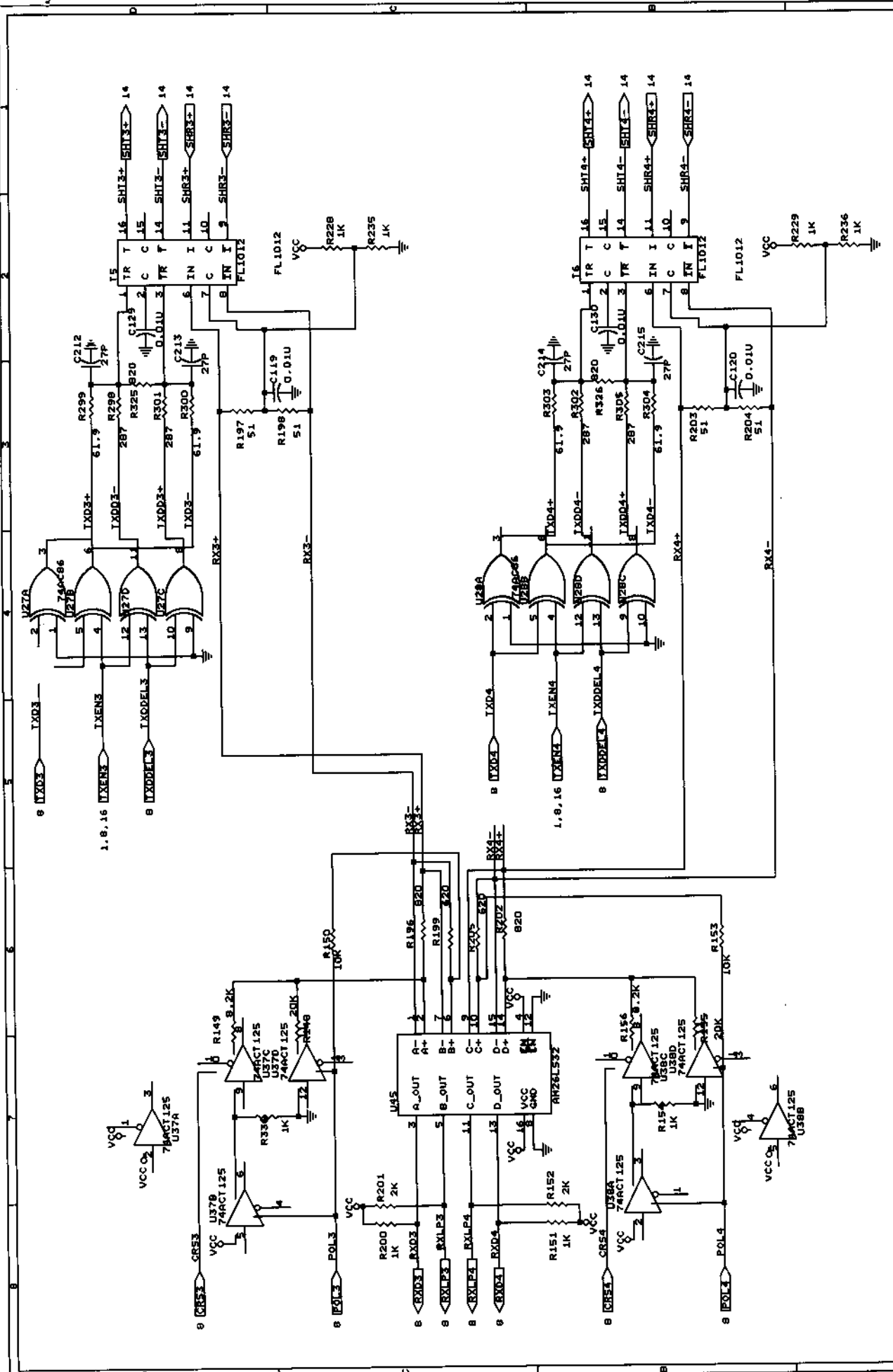
DOC. NO.: 305DES2218--A1-

APPROVED: [Signature]
CHECKED: [Signature]
DATE: 11/98

PREPARED BY: ROBERT CHEN
ISSUE DATE: JUL 9, 1997

TITLE: ES-2218B1: 10M PORT5 & PORT6 CKT
VERSION: A
SIZE: 2102
REV: A1

DATE: FEBRUARY 11, 1998
SHEET: 11 OF 18

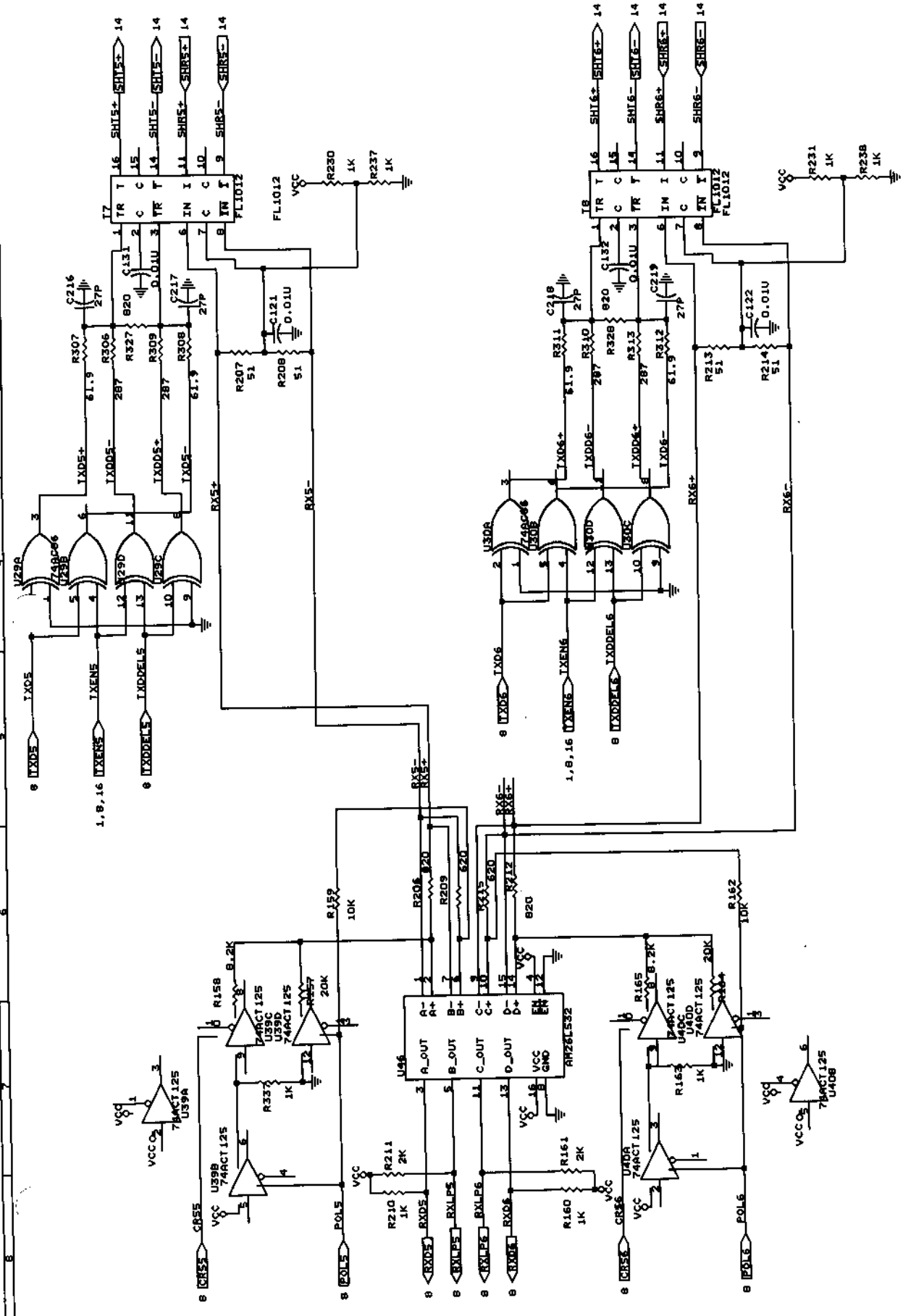


10M PORT7 & PORT8

D-Link Corp.

DOC. NO.: 305DES2218---A1-

Approved: *[Signature]* 11/98
Checked: *[Signature]* 11/98
Version: A
Title: ES-221801: 10M PORT7 & PORT8 CKT
Size: 2102
REV: 1
Date: FEBRUARY 11, 1998 Sheet 12 of 18



0.01uF5



D-Link

DOC. NO.: 305DES2218---A1-

Approved: 張福財	3/11/98	PREPARED BY : ROBERT CHEN	3/11/98
Checked: 張福財	3/11/98	ISSUE DATE : JUL 8, 1997	
		TITLE	ES-221881 : 10H PORTS & PORTIO CKT
		Size Document Number	REV 2102 2202 A1
Version: A		Date: FEBRUARY 11, 1998	Sheet 13 of 18

18/88

	VCC	C84	C96	C85	C76	GND
.075						
						.01U#5

D-Link® Corp.

DOC. NO.: 305DES2218 ---A1-

Approved: [Signature] Checked: [Signature]	<pre>PREPARED BY : ROBERT CHEN 陳若宏 文 21/1/98</pre> <hr/> <pre>ISSUE DATE : JUL 8, 1997</pre> <hr/> <pre>Title ES-2218B1 : 10H PORTS & PORTIO CKT</pre> <hr/> <pre>Size Document Number 2102 REV A1</pre> <hr/> <pre>Date FEBRUARY 11, 1998 Sheet 13 of 18</pre> <hr/> <pre>Version: A</pre>
-----------------------------------------------	-------------------------------------------------------------------------------------------------------------------------------------------------------------------------------------------------------------------------------------------------------------------------------------------------

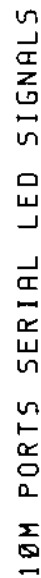


D-Link®

WILKINSON Corp.
DOC. NO.: 305DES2218-...A1-

Approved: 張福財	2/11/98	Prepared by: ROBERT CHEN	2102
Checked: 陳德財	2/11/98	Issue Date: JUL 8, 1997	2202
		Title: ES-2218BI : PHONE JACKS	REV
		Size: DOCUMENT	A1
		Date: February 11, 1998	14 of 18

14/88



D-Link

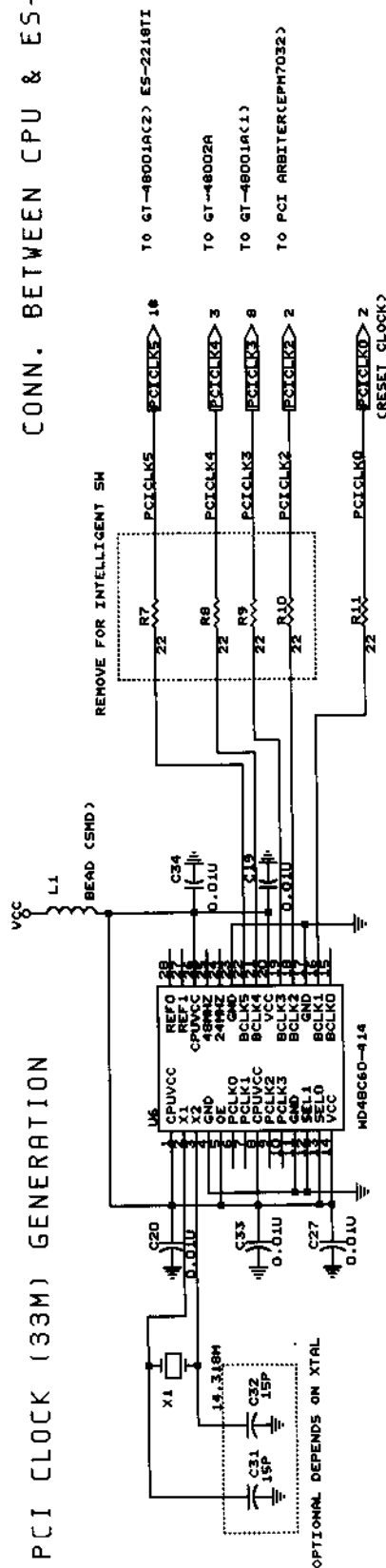
Approved: 張福財	27/11/98	PREPARED BY : ROBERT CHEN	27/11/98
Checked: 張福財	27/11/98	ISSUE DATE : JUL 8, 1997	27/11/98
		Title	
		ES-221881 : LED's DISPLAY CRT	
		Size	REV
		Document Number	2102
		B	A1
		Version: A	2202
		Date: February 11, 1998	15 of 18

100M PORTS LED CIRCUIT





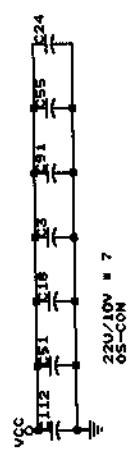
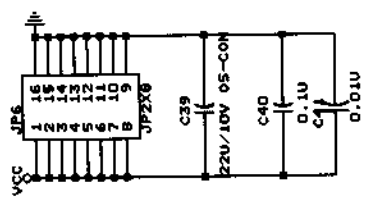
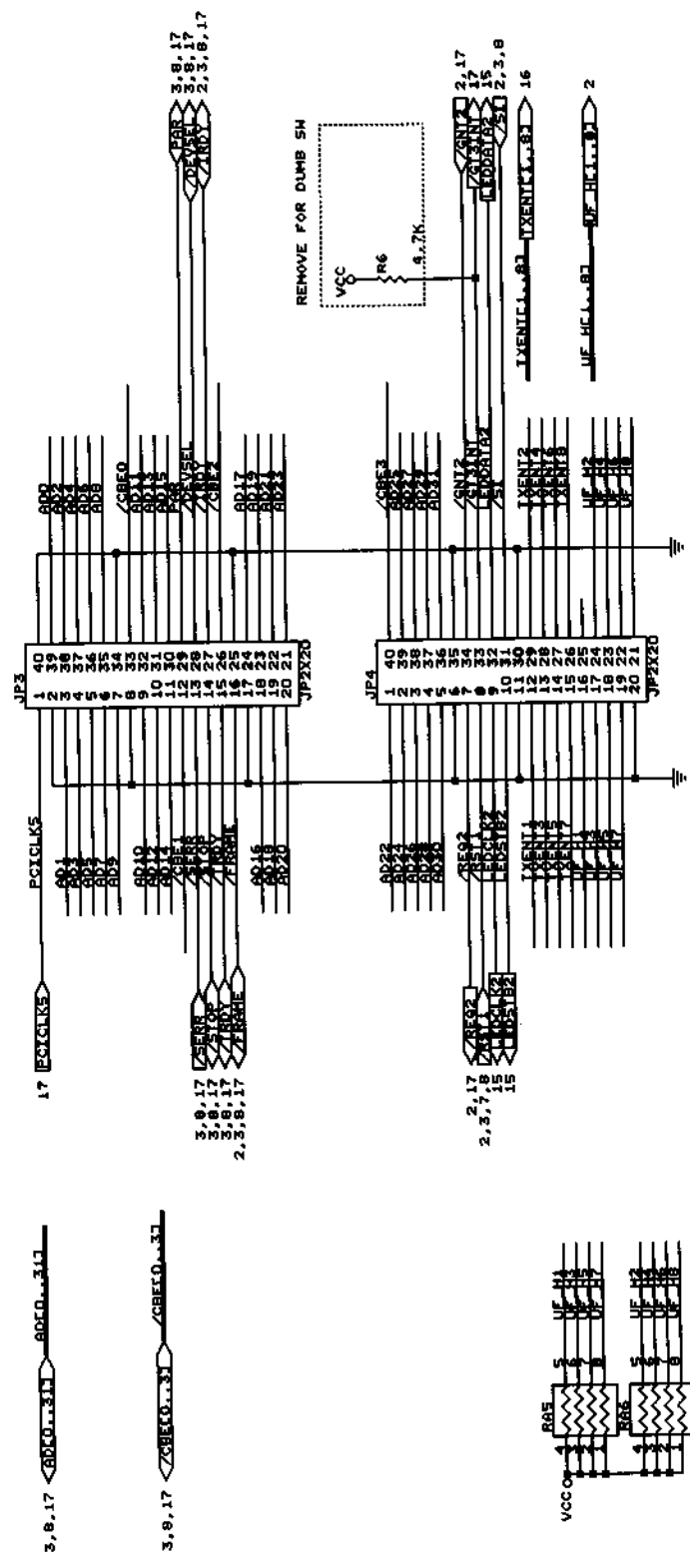
CONN. BETWEEN CPU & ES-2218BI



PCI CLOCK (33M) GENERATION

3. 8. 18 /CBECO..37

D-Link® Corp.		Approved: 張福財 Checked: 張福財 Date: 2/11/98	PREPARED BY : ROBERT CHEN ISSUE DATE : JUL 8, 1997 Title: ES-2218BI : B2B COMM. & PCI CLOCKS Size: 2102 B Document Number: 2102 A1 2202 REV A1 Date: FEBRUARY 11, 1998 Sheet: 17 of 18
DOC. NO.: 305DES2218---A1-			



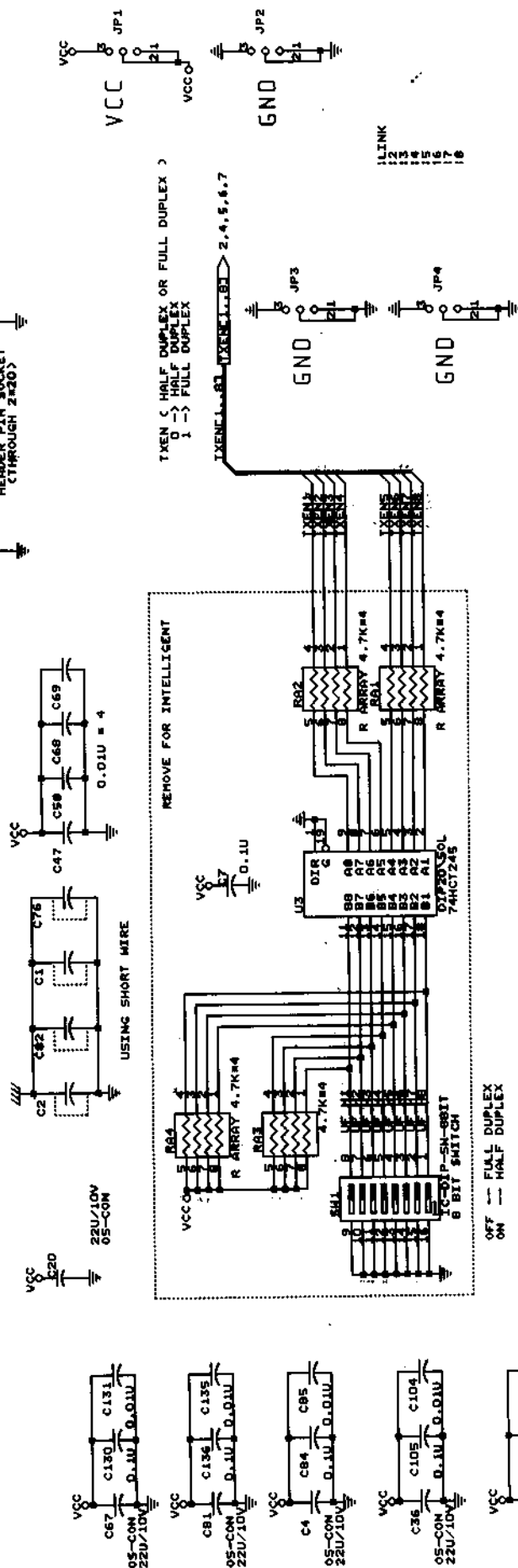
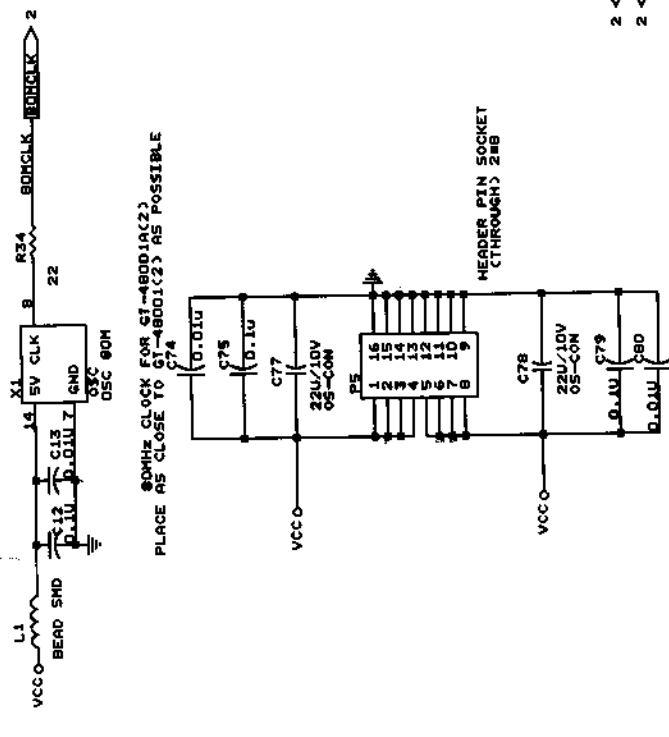
CONN. BETWEEN ES-2218BI & ES-2218TI

D-Link Corp.

DOC. NO.: 305DES2218--A1-

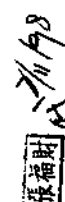
APPROVED: [Signature] DATE: 7/1/98
CHECKED: [Signature] DATE: 7/1/98
PREPARED BY: ROBERT CHEN
ISSUE DATE: JUL 8, 1997
FILE: ES-2218BI TO ES-2218TI CONN.
Size Document Number: 2102
REV: 2202
Date: February 11, 1998
Sheet: 18 of 18

CONN. BETWEEN ES-2218BI & ES-2218TI



DIP SW FOR GT-48001A

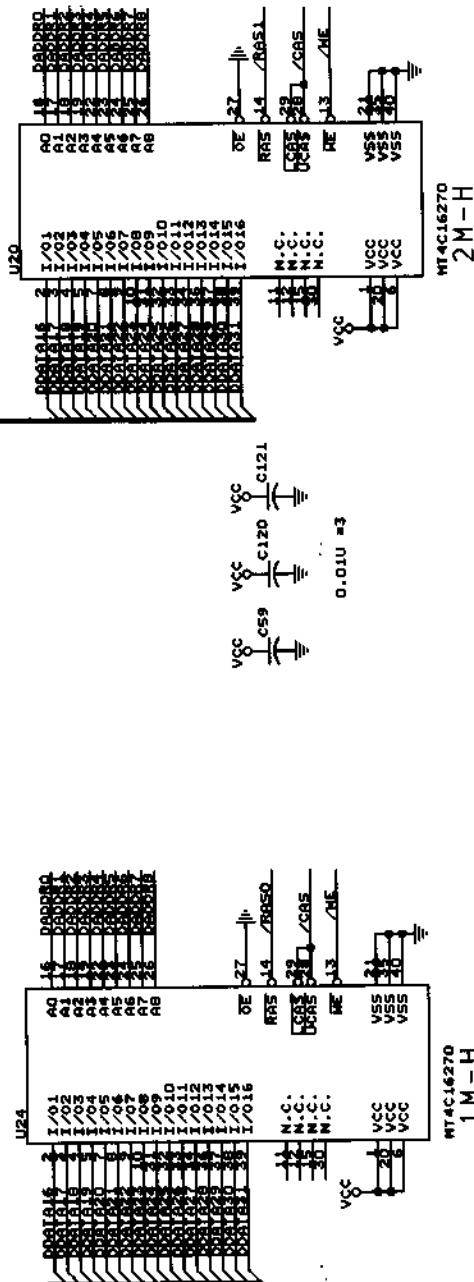
D-Link® Corp.	Approved: 陳福財 2/11/98 Checked: 陳福財 2/11/98	PREPARED BY : ROBERT CHEN 陳福財 ISSUE DATE : AUG 5, 1997 TITLE : ES-2218TY : ES2218TY TO ES-221801 CONN.
	Version: A Date: February 11, 1998	Size Document Number REV 2102 2202 1 of 1



2 DADDR0..87 DADDR0..87

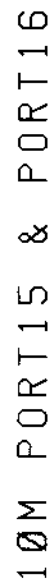
2 DATA0..31 DATA0..31

RAS0 RAS1 RAS2 RAS3 RAS4 RAS5 RAS6 RAS7



D-Link® Corp.

Approved: 張福財	7/1/98	Prepared by: ROBERT CHEN	REV
Checked: 張福財	7/1/98	Issue Date: AUG 5, 1997	A1
		Title: 85-22181: DRAM FOR GT-48001A(2)	2102
		Size: 8	2502
		Date: February 11, 1998	Sheet 3 of 8

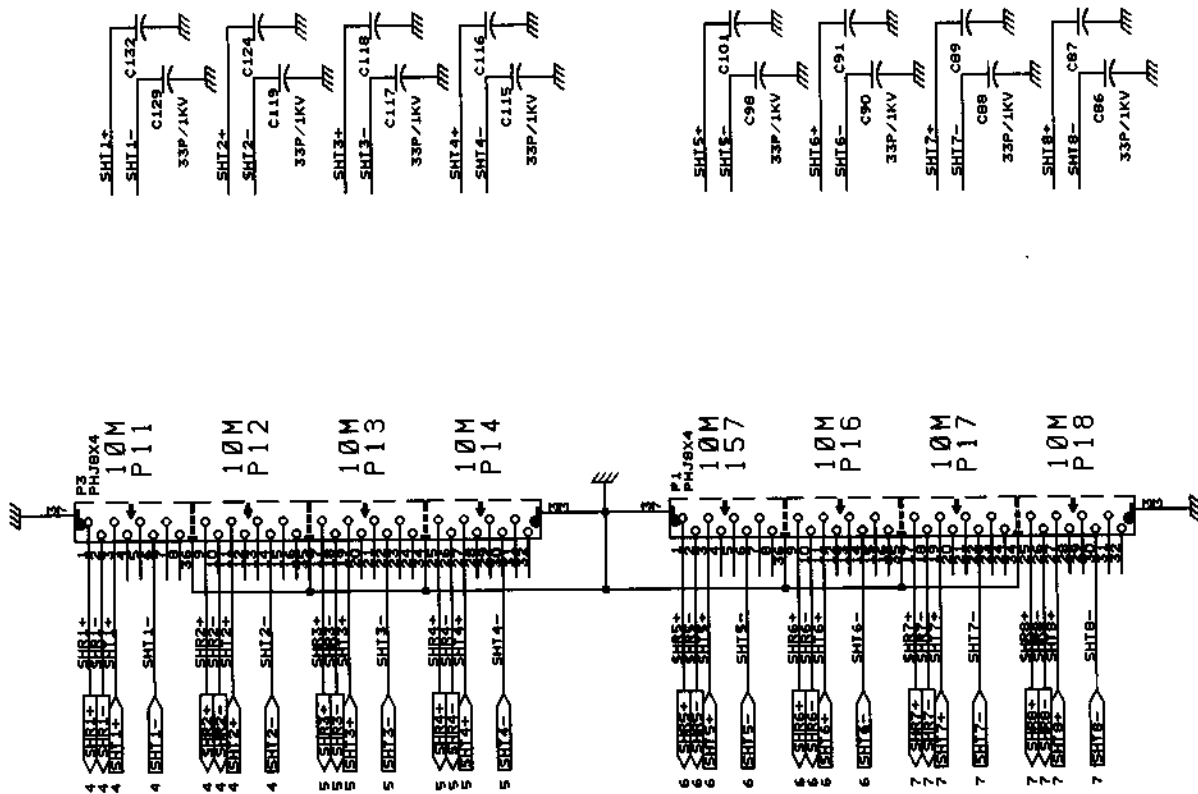
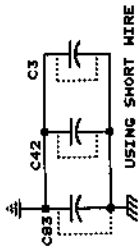


DOC. NO.: 305DES2218--A1-

24/38



Approved: 張福財	2/11/98	PREPARED BY : ROBERT CHEN	2/22/98
Checked: 張福財	2/11/98	ISSUE DATE : AUG. 5, 1997	
		Title	
		ES-224811 : 10M PORT17 & PORT18 CKT	
Version: A		Size Document Number	REV
		B	2102
		Date: February 11, 1998	#1
			7 of 8

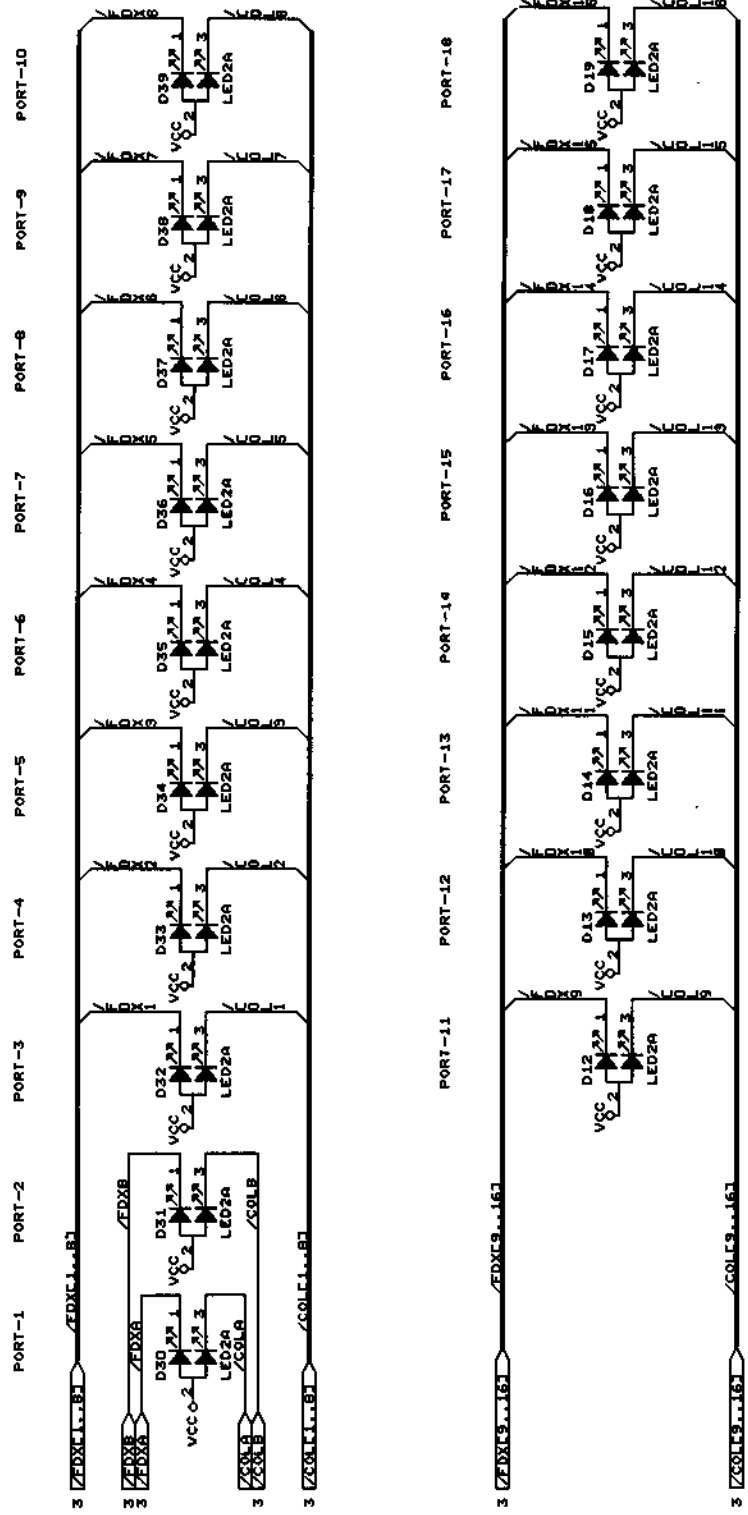


D-Link Corp.

10M & 10M PHONE JACKS

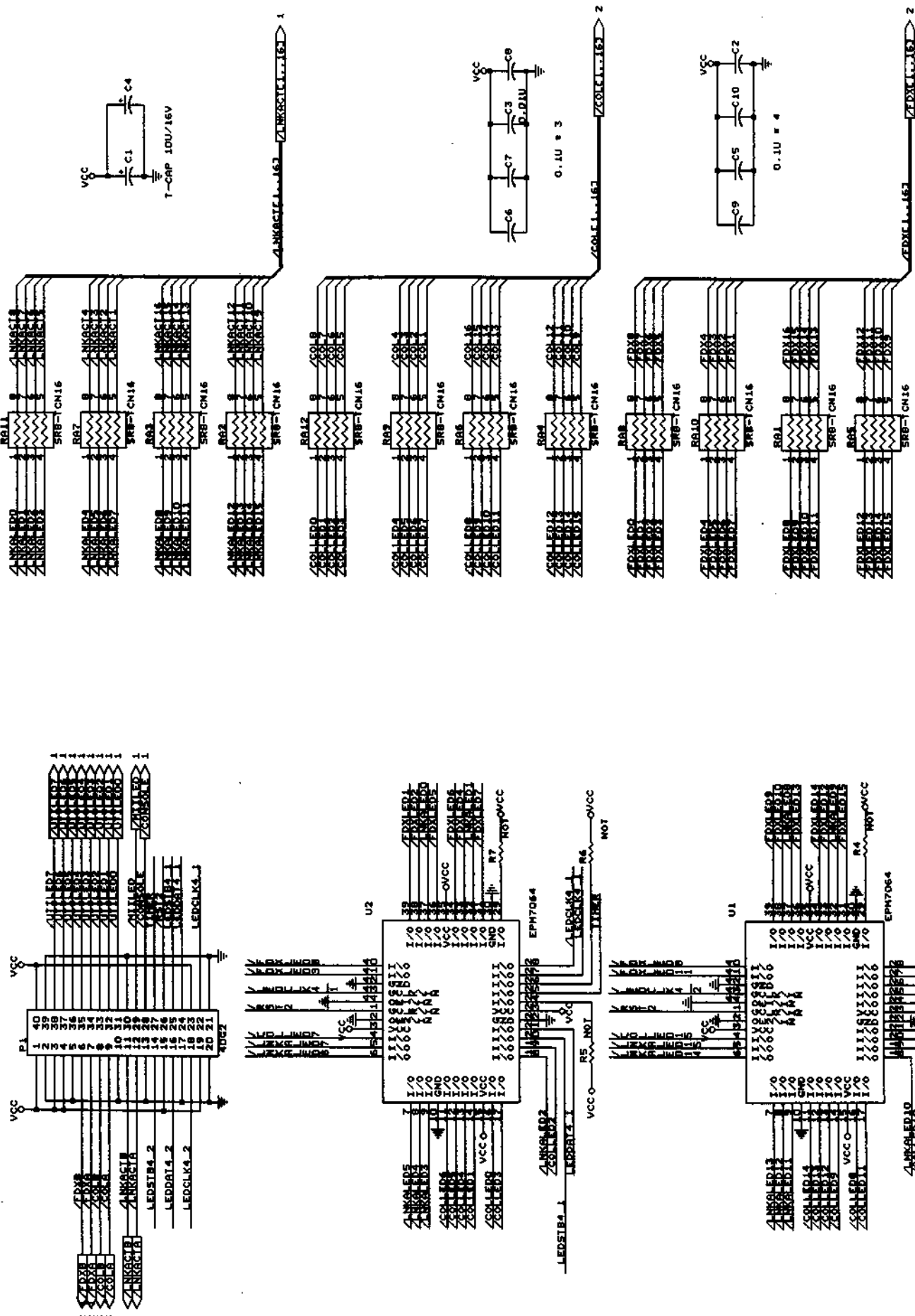
DOC. NO.: 305DES2218---A1-

Approved: [Signature]	Prepared By: ROBERT CHEN	2102	REV
Checked: [Signature]	Issue Date: AUG. 5, 1997	2202	A1
Version: A	ES-2218T1: PHONE JACKS	2302	B 07
	Size: Document Number	2402	
	Date: February 11, 1998	2502	



SHEET SIZE B: 15.2 X 11.7

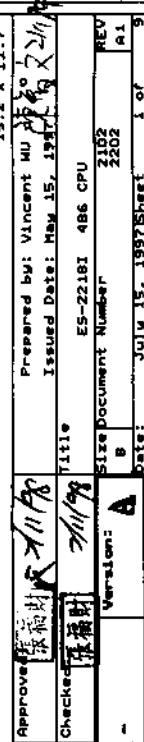
D-Link Corp.		APPROVED: 2/1/98		PREPARED BY : ROBERT CHEN	
DOC. NO.: 305DES2218---A1-		CHECKED: 2/1/98		ISSUE DATE : FEB. 19, 1997	
Version: A		Title: ES-2218 : LEDs ARRAY		REV	
Size Document Number		2102		2102	
Date: February 11, 1998		Sheet		2 of 3	

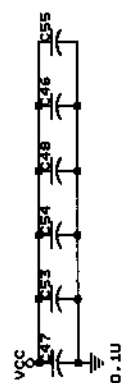


D-Link Corp.

DOC. NO. 305DES2218--A1-

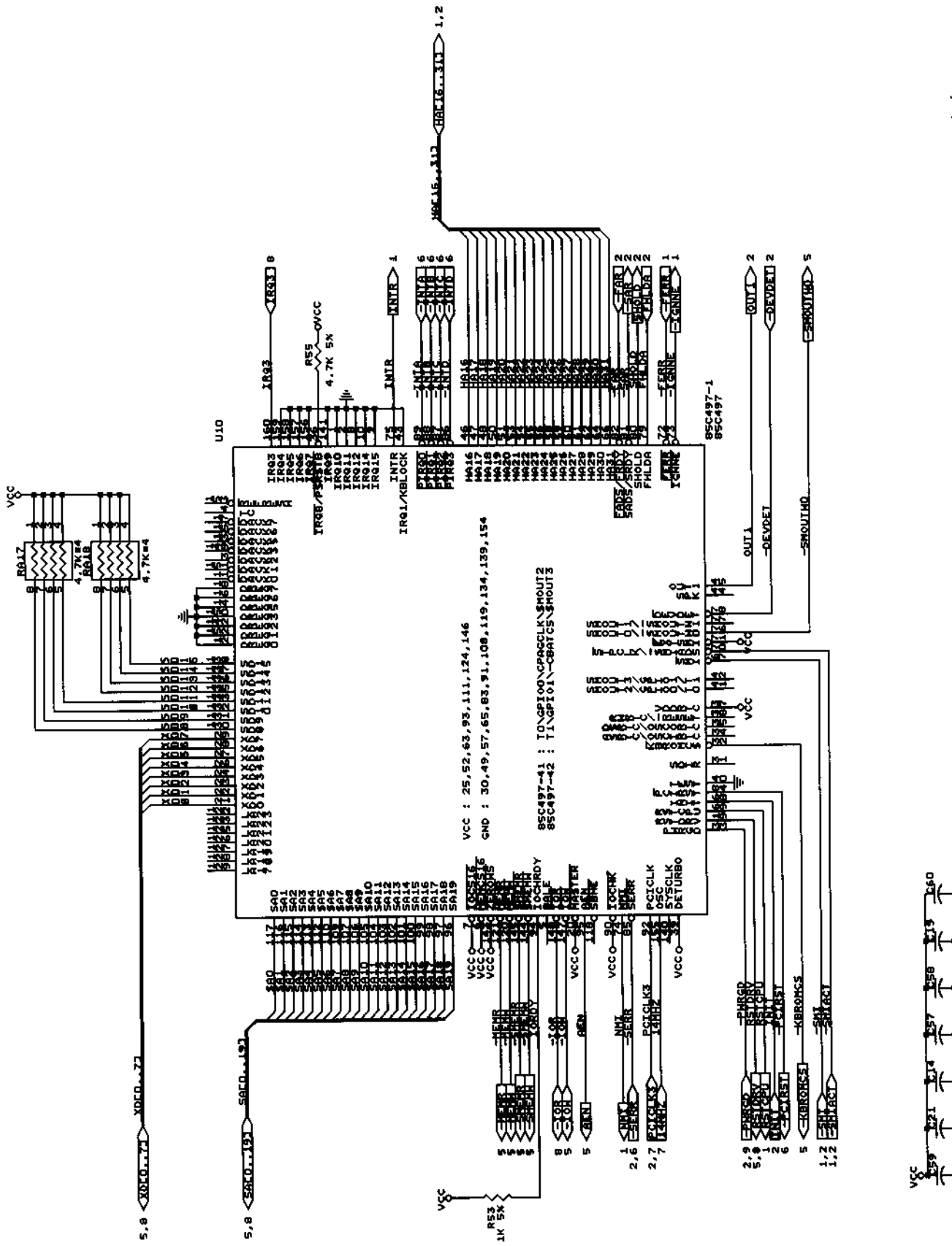
Approved: <i>[Signature]</i> 2/11/98	Prepared by: ROBERT CHEN	Issue Date: FEB. 19, 1997
Checked: <i>[Signature]</i> 2/11/98	ES-2218: LED CABLE CONN. & DECODE CKT	File #
Version: A	Size: Document Number	REV
	Date: February 11, 1998 Sheet	REV
		3 of 3





DOC. NO.: 305DES2218--A1-

Version: A	Size Document Number	REV
B	2102	A1
	2202	
Date: July 15, 1997	Sheet 2 of 9	



D-Link
Corporation

DOC. NO.: 305DES2218 --A1-

Approved: 陈福财

Checked: 陈福财

Version: A

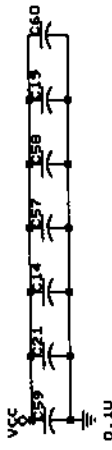
Prepared by: Vincent MU

Issued Date: May 15, 1997

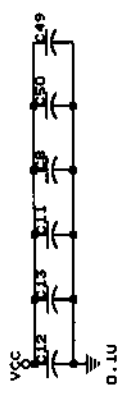
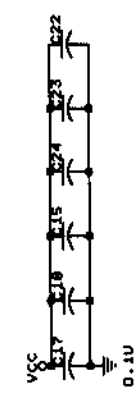
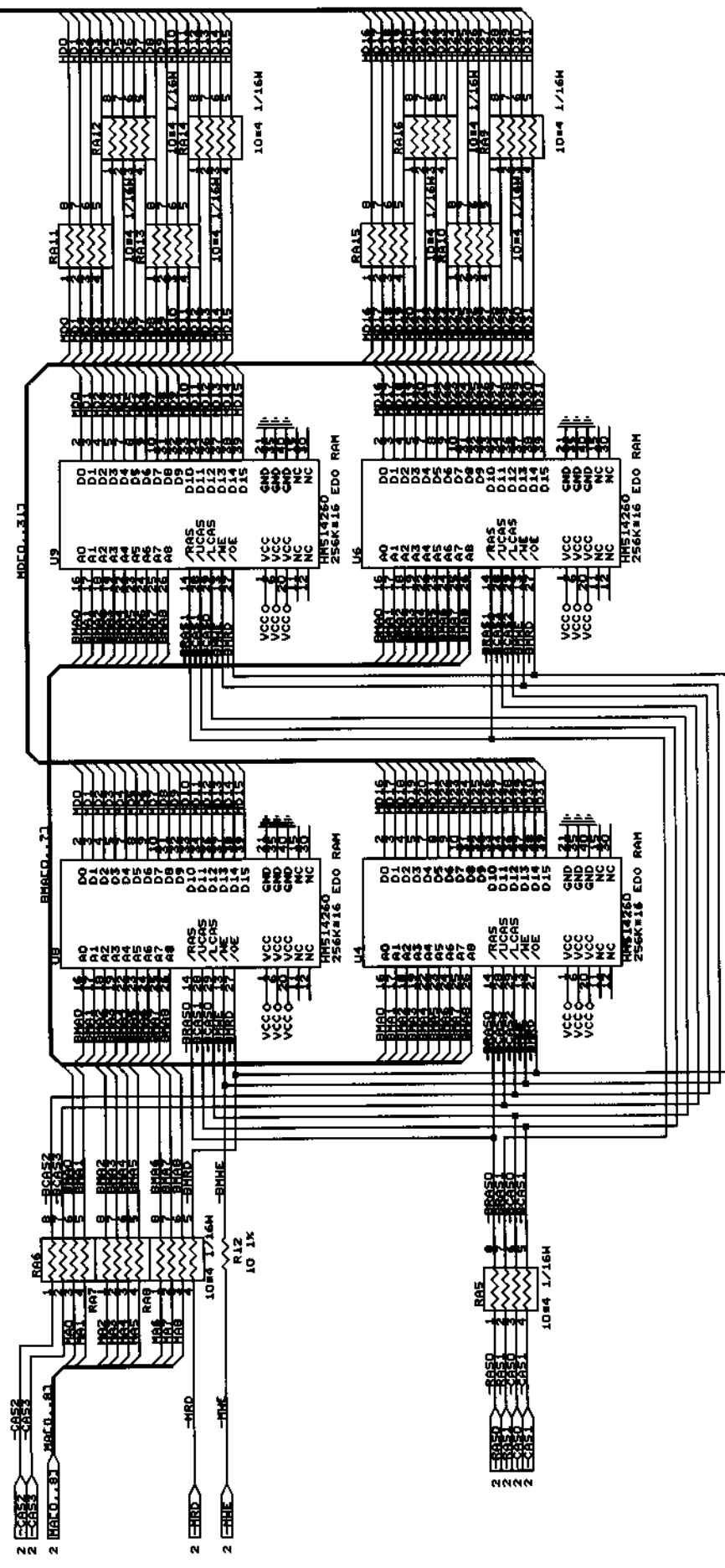
Title: ES-2218I S15 SSC497

Size Document Number: 2102 2202

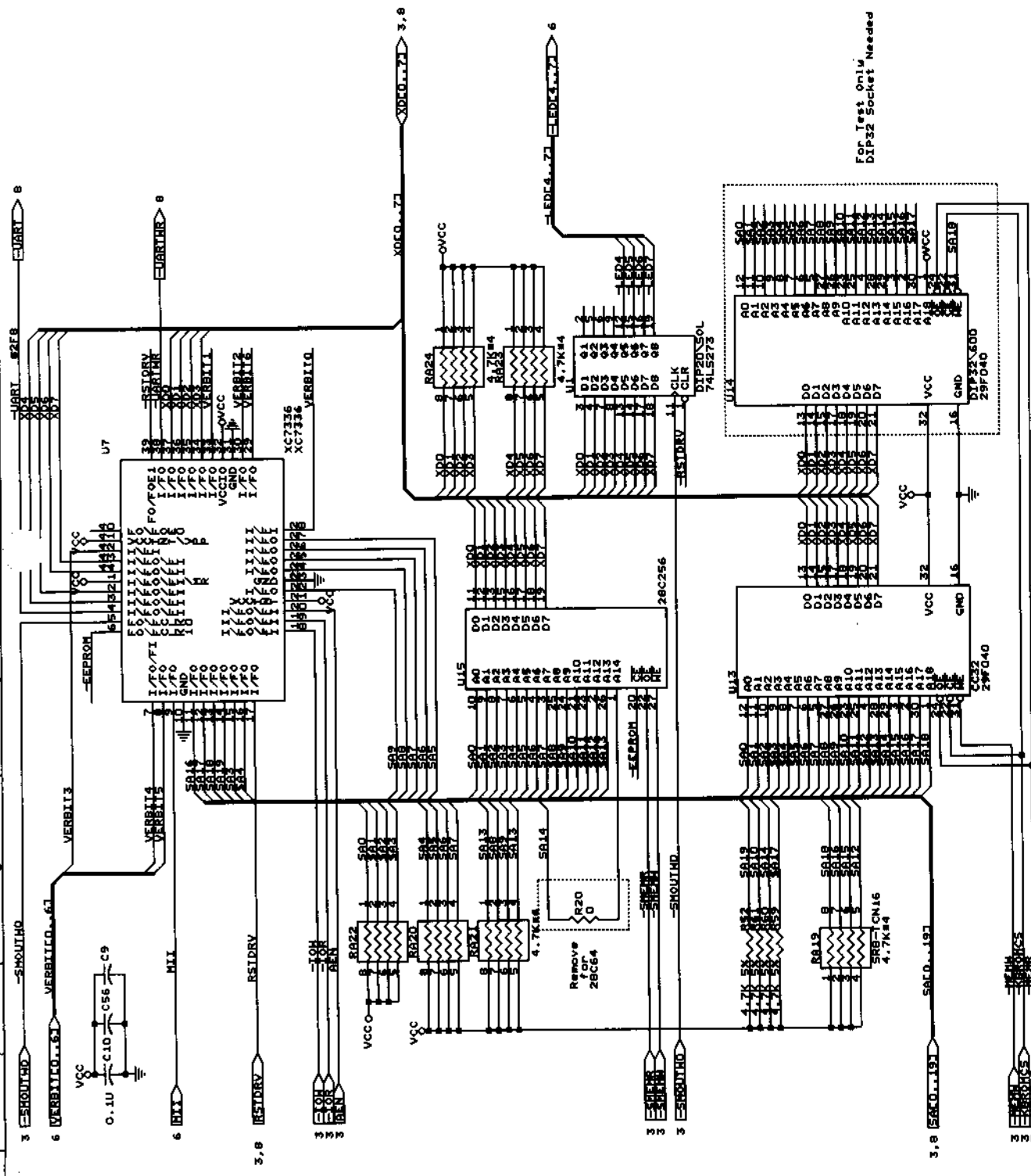
Date: July 15, 1997 Sheet 3 of 3



1,2 HOCO..317



D-Link Corp.		Approved by: Vincent HU		Date: 7/11/98	
DOC. NO.: 305DES2218--A1		Checked by: Vincent HU		Date: 7/11/98	
		Title: ES-2218I DRAM		REV: 2102	
		Version: A		REV: 2202	
		Date: July 15, 1997		REV: 2302	
				REV: 2402	
				REV: 2502	
				REV: 2602	
				REV: 2702	
				REV: 2802	
				REV: 2902	
				REV: 3002	
				REV: 3102	
				REV: 3202	
				REV: 3302	
				REV: 3402	
				REV: 3502	
				REV: 3602	
				REV: 3702	
				REV: 3802	
				REV: 3902	
				REV: 4002	
				REV: 4102	
				REV: 4202	
				REV: 4302	
				REV: 4402	
				REV: 4502	
				REV: 4602	
				REV: 4702	
				REV: 4802	
				REV: 4902	
				REV: 5002	
				REV: 5102	
				REV: 5202	
				REV: 5302	
				REV: 5402	
				REV: 5502	
				REV: 5602	
				REV: 5702	
				REV: 5802	
				REV: 5902	
				REV: 6002	
				REV: 6102	
				REV: 6202	
				REV: 6302	
				REV: 6402	
				REV: 6502	
				REV: 6602	
				REV: 6702	
				REV: 6802	
				REV: 6902	
				REV: 7002	
				REV: 7102	
				REV: 7202	
				REV: 7302	
				REV: 7402	
				REV: 7502	
				REV: 7602	
				REV: 7702	
				REV: 7802	
				REV: 7902	
				REV: 8002	
				REV: 8102	
				REV: 8202	
				REV: 8302	
				REV: 8402	
				REV: 8502	
				REV: 8602	
				REV: 8702	
				REV: 8802	
				REV: 8902	
				REV: 9002	
				REV: 9102	
				REV: 9202	
				REV: 9302	
				REV: 9402	
				REV: 9502	
				REV: 9602	
				REV: 9702	
				REV: 9802	
				REV: 9902	
				REV: 10002	

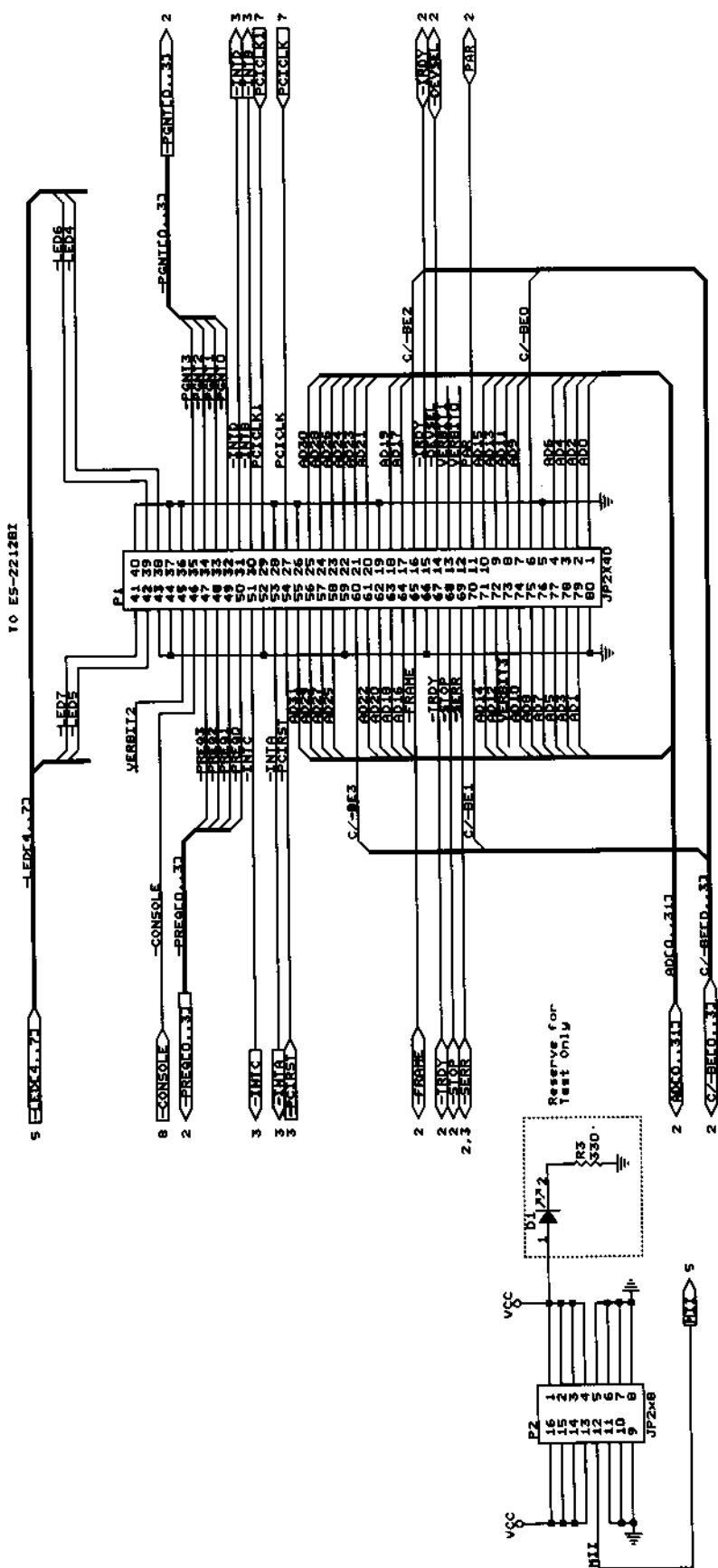
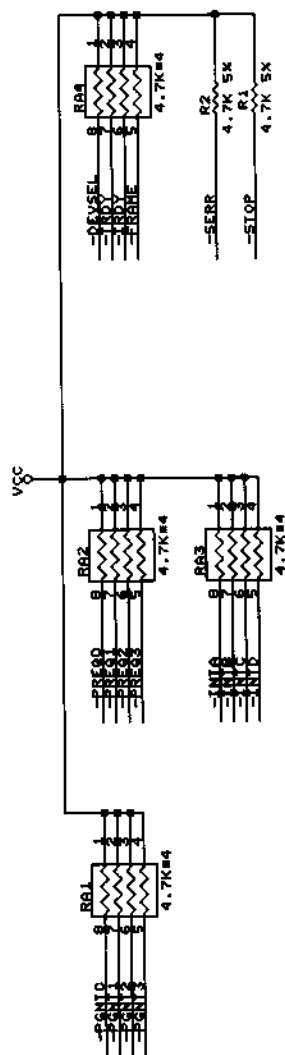
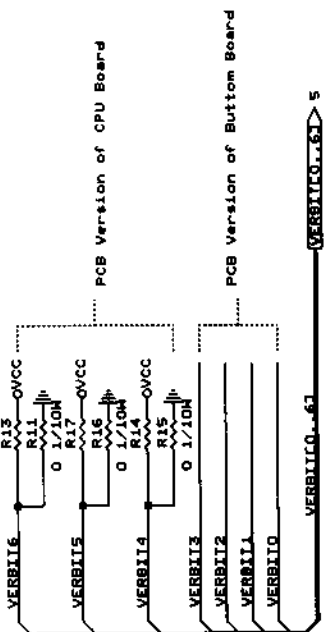


D-Link Corp.

DOC. NO.: 305DES2218--A1-

Approved: 7/11/98
Checked: 7/11/98
Version: A

Prepared by: Vincent HU
Issued Date: May 15, 1997
Title: ES-22101 ROM & EEPROM & LED REG & DECODER
Size: Document Number
REV: 2102
REV: 2202
Date: JULY 15, 1997 Sheet 5 of 9



D-Link

Check

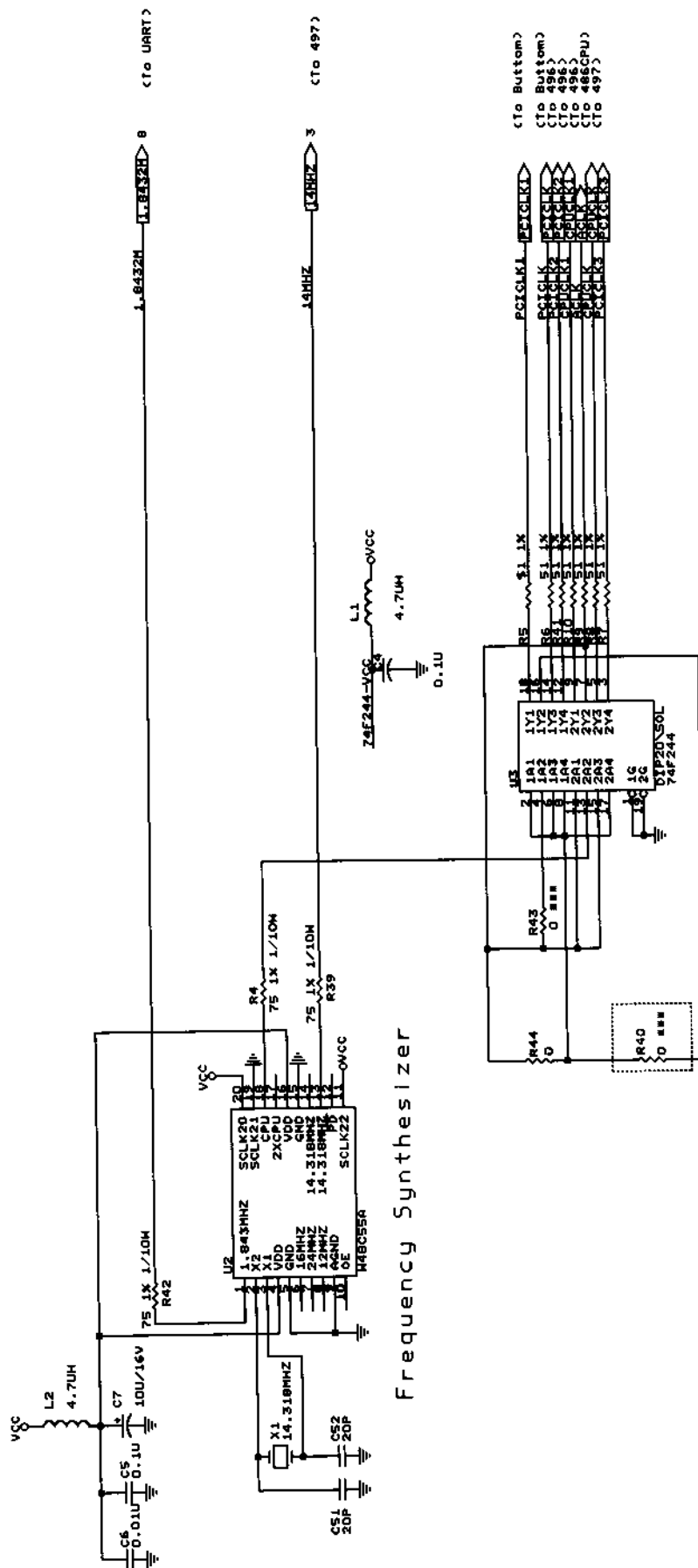
Approved: _____
Checked: _____

張福財	86/11/98
張福財	86/11/98

Prepared	
Issued	
File	

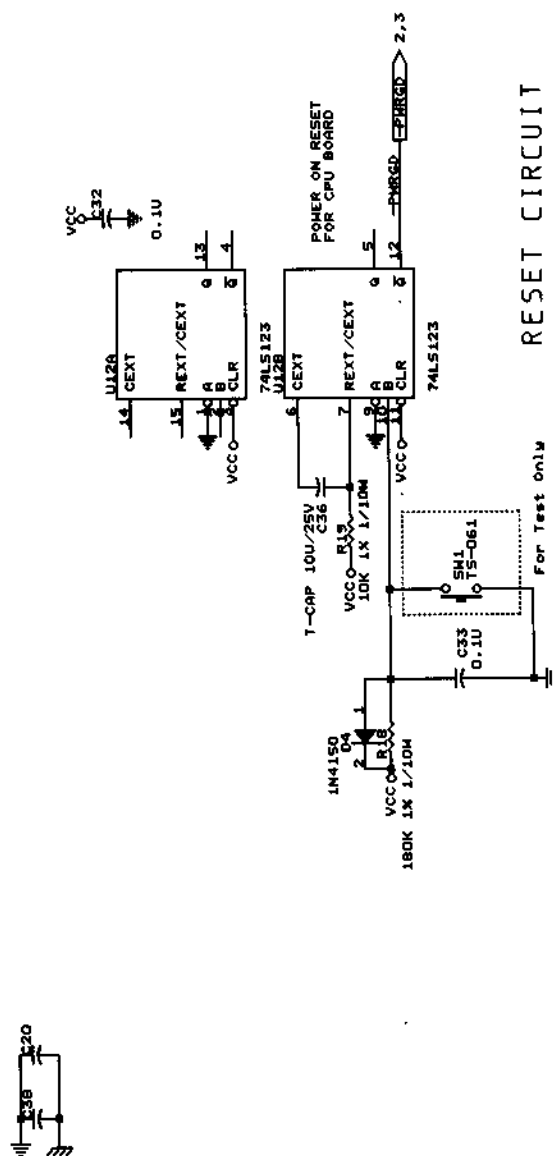
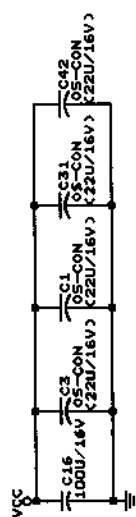
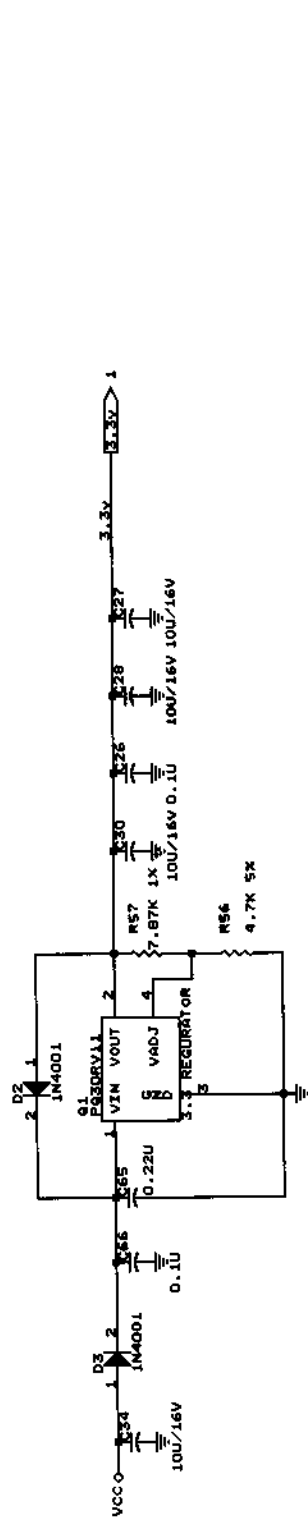
ed by: Vincent MU
Date: May 15, 1997
E5-22181 B2B PCI CONNECTOR

DOC. NO.: 305DES2218-1-1
 Version: A
 Size: 2102
 Document Number: 2202
 Date: 10/15/1997 Sheet: 6 of 9



Clock Driver for 33MHz

D-Link Corp.		Approved: 7/1/98 Checked: 7/1/98 Version: A	Prepared by: Vincent MJ Issued Date: May 15, 1997 Title: ES-22181 SYSTEM CLOCKS GENERATION Size: 2102 Document Number: 2102 Date: July 13, 1997 Sheet 7 of 9
Doc. No.: 305DES2218--A1-		REV A1	



REF DATE:

ISSUED DATE: 87. 2. 26

DOC NO. 305DES2218--A1-

VERSION	A
---------	---

PAGE OF 0 / 88

文件履歷表

DES-2218 AI CKT Diagram

修訂日期	版本	變更內容
87. 2. 26	A	Refer NPRDES 2218 --- A1-01

(DOC NO.:102-005001, F05002)