

L2 Ethernet Stack

Access Layer Switch

- Choices of 24 and 48 Ethernet Ports
- 2 Combo 1000BASE-T/SFP Gigabit Uplinks Per Switch
- Scalable Stack With Single IP Management
- Robust Security & L2/L3/L4 Multi-Layer QoS
- Redundant Power Supply/AC or DC Power Options

FEATURES

Flexible Choices

- 24 or 48 10/100BASE-TX Ports
- 2 Combo 1000BASE-T/SFP Gigabit Uplinks
- AC or DC Internal Power Supply for 24-Port Switch

xStack Integration

- Virtual Stack of Up to 32 Units
- Embedded D-Link SIM for Integration With L3 Core Gigabit Switches

Security

- L2/L3/L4 Multi-Layer Access Control
- External RADIUS/TACACS+ Authentication Support
- SSH/SSL Support
- D-Link Safeguard Engine

Quality of Service

- 802.1p Priority Queues/Multi-Layer CoS
- IP Multicast Support for Bandwidth-Intensive Applications

Traffic Monitoring/Bandwidth Control

- Traffic Segmentation
- Bandwidth Control Down to 1Mbps
- Broadcast Storm Control Down to 1pps
- 802.3ad Link Aggregation (Port Trunks)
- GUI Traffic Monitoring
- RMON v1 Support
- Port Mirroring

Configuration/Management

- Web-Based
- Command Line Interface (CLI)
- Telnet Server
- SNMP v1, v2c, v3
- D-Link Single IP Management (SIM) v1.6
- D-View SNMP Network Management Module Provided

The DES-3500 series is a member of the D-Link xStack family of next generation switches that deliver performance, flexible expansion, robust security, multi-layer Quality of Service (QoS), Power Over Ethernet and redundant power option. Supporting D-Link's Single IP Management, these switches comprise the workgroup access-layer virtual stack for seamless integration with the L3 core Gigabit switches to form part of a multi-level network structured with high-speed backbone and centralized servers.

Cost-Effective Virtual Stack. The DES-3500 series forms an Ethernet workgroup stack with flexible Gigabit uplinks. Traffic running among units in this virtual stack is through the full-duplex Gigabit interfaces and your usual network wires, doing away with the costly and cumbersome stacking cables. Without any stacking cable, cable distance barrier and physical stacking limitations, your stack can comprise units that are located anywhere on the network, minimizing the impact of any single point of failure.

Single IP Management. The DES-3500 series simplifies and speeds up your management tasks, as multiple switches can be configured, monitored and maintained from any workstation running a web browser through one unique IP address. The stack is managed as a single object, with all units identified by a single IP address. You can see a Tree View of the members of the stack and a network topology showing the locations of the units and their link information. This simple yet powerful web-based management eliminates the need for you to install expensive SNMP network management software. You can add units to up to 32 switches per stack not limited to any specific models. With embedded Single IP Management, you can expand your Ethernet stack to include L3 core Gigabit and chassis-based switches to accommodate your network growth.

Comprehensive Security. The DES-3500 series provides a complete set of security features for connectivity and access control. This set includes Access Control Lists (ACLs) based on MAC address, switch port, IP address, and/or TCP/UDP port numbers, 802.1x user authentication and MAC address control. The DES-3500 also provides central management for administration access via TACACS+ and RADIUS. Together with network application control, this security ensures that not only proper user access is served, but malicious traffic is also prevented from being spread across the network.

Enhanced Network Performance & Availability. The DES-3500 series switches provide extensive VLAN support including GARP/GVRP, 802.1Q and asymmetric VLAN to enhance network security and performance. Bandwidth control allows you to set traffic limit for each port to control the traffic volume from the edge of the network. 802.1w Rapid Spanning Tree with network recovery of less than 15 seconds and redundant power option increase the reliability and availability of your Virtual Stack. The DES-3500 series implements a robust set of multi-layer (L2, L3, L4) QoS/CoS features to ensure that critical network services like VoIP, ERP, Intranet and video conference are served with proper priority. Priority queues for 802.1p/TOS/DiffServ are supported, with classification and marking based on MAC SA/DA, IP SA/DA, and/or TCP/UDP port numbers.

XSTACK



DES-3500 Series

Product Specifications

DES-3526

DES-3526DC

DES-3550



	DES-3526	DES-3526DC	DES-3550
Interface			
10/100BASE-TX Ports	24	24	48
Combo 10/100/1000BASE-T Ports/SFP Slots	2	2	2
Auto-Negotiation of Network Speeds (RJ-45 Ports)	✓	✓	✓
Auto-MDI/MDIX (RJ-45 Ports)	✓	✓	✓
RS-232 Console Port	✓	✓	✓
Power			
Internal Power Supply	AC to DC	DC to DC	AC to DC
Power Input	100 to 240VAC, 10A, 50 to 60Hz	48 VDC	100 to 240VAC, 10A, 50 to 60Hz
Power Output	12VDC, 5A (max.)	12VDC, 5.4A (max.)	12VDC, 5A (max.)
Power Consumption	23 watts (max.)	23 watts (max.)	40 watts (max.)
Optional Redundant Power Supply	✓	-	✓
Performance			
Switching Capacity	8.8Gbps	8.8Gbps	13.6Gbps
Max. 64-Byte System Packet Forwarding Rate	6.6Mpps	6.6Mpps	10.1Mpps
MAC Address Table	8K	8K	8K
Packet Buffer Size	16MB	16MB	64MB
Diagnostic LEDs			
10Mbps or 100Mbps Speed (Per Ethernet Port)	✓	✓	✓
10/100Mbps or 1000Mbps Speed (Per Gigabit Port)	✓	✓	✓
Link/Activity (Per Port)	✓	✓	✓
Power, Console, RPS (Per Device)	✓	✓	✓
Physical/Environmental			
Ventilation DC Fans	40 x 40 mm x 1	40 x 40 mm x 1	40 x 40 mm x 2
BTU/Hr.	73.8	73.1	157
Dimensions	441 x 207 x 44 mm	441 x 207 x 44 mm	441 x 309 x 44 mm
Size	19-Inch Standard Rack-Mount Width, 1U Height		
Weight	2.56 kg (5.64 lbs)	2.50 kg (5.51 lbs)	4.40 kg (9.70 lbs)
Operating Temperature	0° to 40°C		
Storage Temperature	-40° to 70°C		
Humidity	5 to 95% Non-Condensing		
EMI	FCC Class A, CE, C-Tick		
Safety	CSA International		
MTBF	53,838 Hours	133,363 Hours	49,414 Hours
Acoustic (Refer to ISO-7779)	< 34dB	< 34dB	< 43dB



Software Functions

VLAN

- IEEE 802.1Q Tagged VLAN
- Port-based VLAN
- GARP/GVRP
- Maximum number of VLANs per device: 255 VLANs (static and dynamic combined)

Priority Queues (CoS)

- Standard: IEEE 802.1p
- Number of queues: 4

Traffic Classification (CoS)

Can be based on user-definable application types:

- TOS
- Diffserv (DSCP)
- Port-based
- MAC address
- IP address
- TCP/UDP port number

Access Security

- Port security (64 MAC addresses max.)
- 802.1x port-based access control
- 802.1x MAC-based access control
- SSH v.1, v.2
- SSL
- Per port traffic segmentation
- IP-MAC-Port binding: 512 entries

Access Control List

Multi-layer ACL (800 entries) based on:

- Port number
- TOS
- Diffserv (DSCP)
- MAC address
- IP address
- Packet protocol type
- TCP/UDP port number (user-definable application types)
- TCP/UDP payload (user-definable packet content)
- Per port ACL definition
- IP-MAC-Port binding ACL mode

Spanning Tree Protocol

- 802.1D Spanning Tree compatible
- 802.1w Rapid Spanning Tree (ring protection with network recovery time of less than 15 sec.)
- Per port BPDU filter

IP Multicast

- IGMP v1, v2
- IGMP snooping (128 groups)
- Enable definite VLAN for Multicast
- IGMP Fast Leave
- User-definable per-port IP multicast range limit

Port Trunk

- Maximum number of ports per trunk: 8
- Maximum number of trunks per device: 6
- Operation mode: load sharing
- 802.3ad compatible Link Aggregation (LACP) static & dynamic modes on uplink and downlink ports for traffic load balance and redundancy

Performance Enhancement Functions

- Traffic segmentation
- Bandwidth control from 1Mbps to the port's maximum rate (in steps of 1Mbps)
- Broadcast storm control: user-configurable from 1pps (packet per second)
- D-Link Safeguard Engine
- CPU interface filtering

Management Support

- Single IP Management (SIM) v1.6
- CLI (command line interface)
- RMON v1 support
- Telnet client
- Telnet server (up to 8 sessions)
- TACACS+ authentication on switch admin access
- RADIUS authentication on switch admin access
- SYSLOG
- Dual Images
- Web GUI traffic monitoring
- Web-based MAC address browsing
- RFC 2030 SNTP (Simple Network Time Protocol)
- SNMP v1, v2c, v3
- SSH/SSL v2
- Bootp/DHCP client
- DHCP relay option 82
- STP loopback detection
- Password recovery

MIBs

- 802.1Q Q-BRIDGE-MIB (RFC 2674)
- 802.1p P-BRIDGE-MIB (RFC 2674)
- MIB-II (RFC 1213)
- Bridge MIB (RFC 1493)
- RMON MIB (RFC 1757) group 1, 2, 3, 9 (Alarm, Statistics, History, Event)
- IGMP MIB (RFC 2833)
- IF MIB (RFC 2233)
- Ethernet-like MIB (RFC 1643)
- PING-MIB and TRACEROUTE-MIB (RFC 2925)
- ICMP Ping by MIB
- Rate limiting by MIB
- Save configuration by MIB
- 802.1w setting and read by MIB
- Port interface MIB-II trap (RFC 1215)
- D-Link enterprise MIB

Firmware Upgrade

TFTP remote upgrade

Optional SFP Transceiver

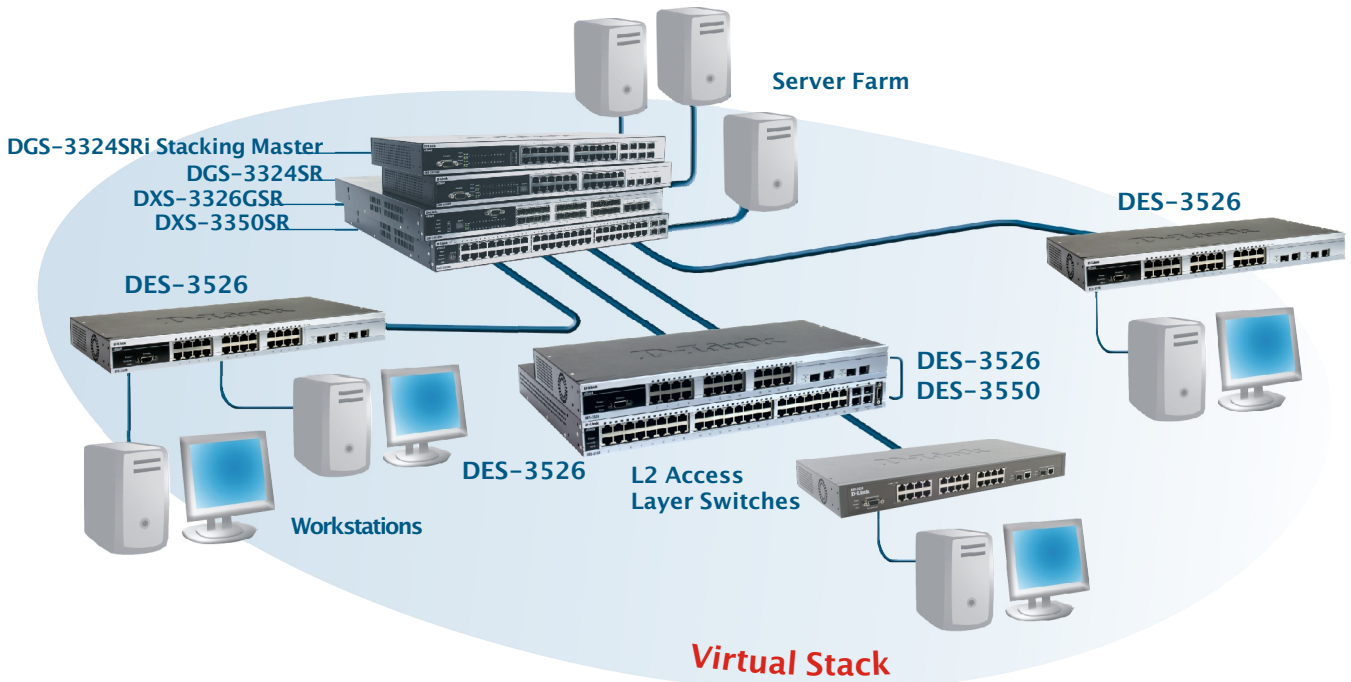
- DEM-310GT** SFP transceiver for 1000BASE-LX, single-mode fiber, max. distance 10km, 3.3V
- DEM-311GT** SFP transceiver for 1000BASE-SX, multi-mode fiber, max. distance 550m, 3.3V
- DEM-312GT2** SFP transceiver for 1000BASE-SX, multi-mode fiber, max. distance 2km, 3.3V
- DEM-314GT** SFP transceiver for 1000BASE-LHX, single-mode fiber, max. distance 50km, 3.3V
- DEM-315GT** SFP transceiver for 1000BASE-LX, single-mode fiber, max. distance 80km, 3.3V

Optional Redundant Power Supply

- DPS-200** 60-watt redundant power supply
- DPS-800** 2-slot redundant power supply chassis
- DPS-900** 8-slot redundant power supply chassis

Management Software

- DS-510** D-View 5.1 SNMP Network Management Program



Stacking With Single IP Management

D-Link Worldwide Offices

U.S.A. TEL: 1-800-326-1688
Canada TEL: 1-905-8295033
Europe (U. K.) TEL: 44-20-8955-9000
Germany TEL: 49-6196-77990
France TEL: 33-1-30238688
Netherlands TEL: 31-10-282-1445
Belgium TEL: 32(0)2-517-7111
Italy TEL: 39-02-2900-0676
Sweden TEL: 46-(0)8564-61900
Denmark TEL: 45-43-969040
Norway TEL: 47-99-300-100
Finland TEL: 358-9-2707 5080
Spain TEL: 34-93-4090770
Portugal TEL: 351-21-8688493
Czech Republic TEL: 420-(603)-276-589
Switzerland TEL: 41-(0)-1-832-11-00
Greece TEL: 30-210-9914 512

TEL: 1-866-743-4905
 FAX: 1-905-8295223
 FAX: 44-20-8955-9001
 FAX: 49-6196-7799300
 FAX: 33-1-30238689
 FAX: 31-10-282-1331
 FAX: 32(0)2-517-6500
 FAX: 39-02-2900-1723
 FAX: 46-(0)8564-61901
 FAX: 45-43-424347
 FAX: 47-22-309580
 FAX: 358-9-2707-5081
 FAX: 34-93-4910795
 FAX: 41(0)-1-832-11-01
 FAX: 30-210-9916902

Luxemburg
Poland
Hungary
Singapore
Australia
India
Middle East (Dubai)
Turkey
Egypt
Israel
LatinAmerica
Brazil
South Africa
Russia
Japan
China
Taiwan
Headquarters

TEL: 32-(0)2-517-7111
 TEL: 48-(0)-22-583-92-75
 TEL: 36-(0)-1-461-30-00
 TEL: 65-6774-6233
 TEL: 61-2-8899-1800
 TEL: 91-022-26526696
 TEL: 971-4-3916480
 TEL: 90-312-473-40-55
 TEL: 202-291-9035
 TEL: 972-9-9715700
 TEL: 56-2-232-3185
 TEL: 55-11-218-59300
 TEL: 27-12-665-2165
 TEL: 7-495-744-0099
 TEL: 81-3-5781-0963
 TEL: 86-10-58635800
 TEL: 886-2-6600-0123
 TEL: 886-2-6600-0123

FAX: 32-(0)2-517-6500
 FAX: 48-(0)-22-583-92-76
 FAX: 36-(0)-1-461-30-09
 FAX: 65-6774-6322
 FAX: 61-2-8899-1868
 FAX: 91-022-26528914
 FAX: 971-4-3908881
 FAX: 90-312-473-40-58
 FAX: 202-291-9051
 FAX: 972-9-9715601
 FAX: 56-2-232-0923
 FAX: 55-11-218-59322
 FAX: 27-12-665-2186
 FAX: 7-495-744-0099 #350
 FAX: 81-3-5781-0965
 FAX: 86-10-58635799
 FAX: 886-2-6600-8168
 FAX: 886-2-6600-9898