



**Firmware Version:** v1.03.B013  
**Prom Code Version:** v1.00.B007  
**Published:** 2009/3/20

These release notes include important information about D-Link switch firmware revisions. Verify that these release notes are correct for your switch:

- If you are installing a new switch, check the hardware version on the device label; make sure your switch meet the system requirement of this firmware. See [Revision History and System Requirement](#) for detailed firmware and hardware matrix
- If your switch is on, check the hardware version by using "show switch" command or see the device information page on web graphic user interface
- If you are upgrading to a new release firmware, see the [Upgrade Instructions](#) to make sure the firmware upgrade procedure is correct.

For the detailed information of the switch products, see [Related Documentation](#).

You can also download the switch firmware, D-View modules and technical documentation from <http://tsd.dlink.com.tw>.

---

## Content:

Revision History and System Requirement: .....	2
Upgrade Instructions: .....	2
Upgrade by using CLI (serial port) .....	2
Upgrade by using Web-UI .....	3
New Features: .....	5
Changes of MIB & D-View Module: .....	5
Changes of Command Line Interface: .....	6
Problem Fixed: .....	6
Known Issues: .....	6
Related Documentation: .....	7

## Revision History and System Requirement:

Firmware Version	Date	Model	Hardware Version
Runtime: v1.03.B013 Prom: v1.00.B007	20/Mar/2009	DES-3528	A1, A2
		DES-3528DC	A1
		DES-3528P	A1
		DES-3552	A1
Runtime: v1.01B035 Prom: 1.00.B006	18/Aug/2008	DES-3528	A1, A2
Runtime: v1.01B030 Prom: 1.00.B006	23/Apr/2008	DES-3528	A1

## Upgrade Instructions:

**Note: This version contains Flash memory re-layout enhancement (please refer to the New Features section). After upgrading to v1.03, downgrading to prior versions is not allowed. If one of the switch image has prior version of firmware, this image can not be selected as the boot up image.**

D-Link switches support firmware upgrade via TFTP server. You may download the firmware from D-Link web site <http://tsd.dlink.com.tw>. Copy the firmware to the TFTP server you will be using. Please make sure the TFTP server is accessible from the switch via networks.

### Upgrade by using CLI (serial port)

Connect a work station to the switch console port and run terminal emulation program capable of emulating a VT-100 terminal. The switch serial port default settings are as follows:

- ◆ Baud rate: **115200**
- ◆ Data bits: **8**
- ◆ Parity: **None**
- ◆ Stop bits: **1**

The switch will prompt the user to enter a user name and a password. Upon the initial connection, there is no user name and password by default.

To upgrade the switch firmware, execute the following commands:

Command	Function
download [ firmware_fromTFTP <ipaddr> <path_filename 64> {image_id <int 1-2>} ]	Download firmware file to the switch.
config firmware image_id <1-2> [delete   boot_up]	Change the boot up image file.
show firmware_information	Display the file name of current boot image and configuration.
reboot	Reboot the switch.

### Example:

1. **DES-3528:5#download firmware\_fromTFTP 10.90.90.91 R103B011.had image\_id 2**  
Command: download firmware\_fromTFTP 10.90.90.91 R103B011.had image\_id 2

```
Connecting to server..... Done.
Download firmware..... Done. Do not power off!
Please wait, programming flash..... Done.
```

2. **DES-3528:5#config firmware image\_id 2 boot\_up**  
Command: config firmware image\_id 2 boot\_up

Success.

3. **DES-3528:5#show firmware information**  
Command: show firmware information

ID	Version	Size(B)	Update Time	From	User
1	1.03.B008	2450452	2009/02/04 17:00:26	10.90.90.91(R)	Anonymous
*2	1.03.B011	2450452	2009/03/05 02:25:85	10.90.90.91(R)	Anonymous

```
'*' means boot up firmware
(R) means firmware update through Serial Port(RS232)
(T) means firmware update through TELNET
(S) means firmware update through SNMP
(W) means firmware update through WEB
(SSH) means firmware update through SSH
(SIM) means firmware update through Single IP Management
```

4. **DES-3528:5#reboot**  
Command: reboot

```
Are you sure you want to proceed with the system reboot?(y/n) y
Please wait, the switch is rebooting...
```

```
Boot Procedure V1.00.B007
```

```
-----
Power On Self Test ..... 100 %

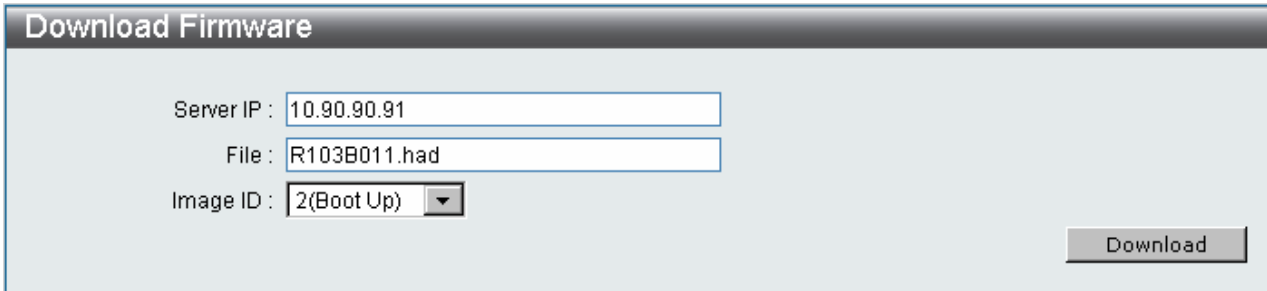
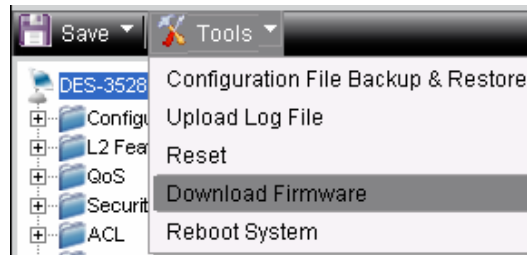
MAC Address : 00-1E-58-4F-F7-D0
H/W Version : A1

Please wait, loading V1.03.B011 Runtime image ..... 100 %
UART init .....
Device Discovery ..... 100 %
Configuration init ..... 100 %
```

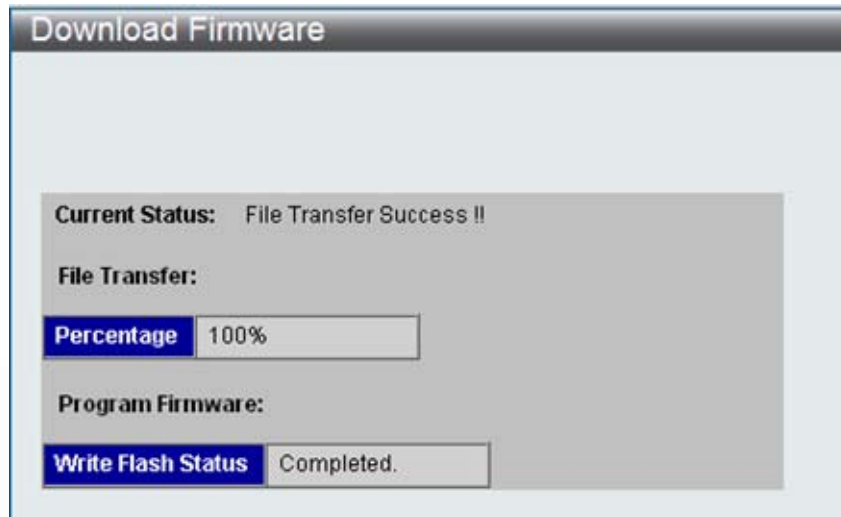
### Upgrade by using Web-UI

1. Connect a workstation with java SE runtime environment to any switch port of the device.
2. Open the web browser of the workstation and enter the IP address of the switch. The system default IP address is 10.90.90.90.
3. Enter administrator's username and password, which are blank by default.
4. To update the switch's firmware or configuration file, select **Tools > Download Firmware**

on the banner.



5. Enter the TFTP Server IP address.
6. Enter the name of the firmware file located on the TFTP server.
7. Select the Image ID you would like to store the firmware file.
8. Click "**Download**" button.
9. Waiting for File Transfer to reach 100% and Program Firmware status completed.



10. To select the boot up image for next reboot, click **Configuration > Firmware information** in the function tree. Click corresponding "**Set Boot**" button for the firmware to be activated for next boot up.
11. To reboot the switch, select **Tools > Reboot System** on the banner.
12. Select "**Yes**" and click "**Reboot**" button.

## New Features:

Firmware Version	New Features
v1.03.B013	<ol style="list-style-type: none"> <li>1. Support DES-3528DC, DES-3528P, DES-3552</li> <li>2. DHCP Local Relay</li> <li>3. PPPoE Circuit-ID Tag Insertion</li> <li>4. DHCP Server (Only supports CLI. No Web GUI &amp; SNMP)</li> <li>5. BPDU Attack Protection (Only supports CLI. No Web GUI &amp; SNMP)</li> <li>6. Flash memory re-layout: allocate larger memory size for firmware images, allowing more features to be added in future releases. When upgrading to v1.03, new PROM code (v1.00.B007) that supports this will be installed to the switch automatically.</li> </ol>
v1.01.B035	<ol style="list-style-type: none"> <li>1. Support DES-3528 A2 hardware.</li> <li>2. Support D-view 6.0 platform.</li> </ol>
v1.01.B030	First release. For supported features, please refer to the product specification and manuals for details.

## Changes of MIB & D-View Module:

The new features of MIB file are also included in the corresponding D-View module. Please download the D-View module from <http://tsd.dlink.com.tw>. For detailed changes of MIB content, please refer to the modification history in each MIB file.

Firmware Version	MIB File	New Features
v1.03.B013	IPMacBind.mib	<ol style="list-style-type: none"> <li>1. Modify the variable binding of the trap of IP-MAC-Port Binding</li> <li>2. Modify the value of swIpmacBindingACLMode: "enable" to "enabled", "disable" to "disabled".</li> </ol>
	I2mgmtDES3528.mib I2mgmtDES3528dc.mib I2mgmtDES3528p.mib I2mgmtDES3552.mib	<ol style="list-style-type: none"> <li>1. Support DHCP Local Relay</li> <li>2. Support PPPoE Circuit-ID Tag Insertion</li> </ol>
v1.01.B035	None	
v1.01.B030	First release. Please refer to datasheet for supported SNMP MIB files.	

## Changes of Command Line Interface:

Firmware Version	Changes
v1.03.B013	None
v1.01.B035	None
v1.01.B030	First release

## Problem Fixed:

Firmware Version	Problems Fixed
v1.03.B013	<ol style="list-style-type: none"> <li>When the maximum number of DHCP snooping entries is configured, and the status of a DHCP snooping entry changes from 'inactive' to 'active' (eg. The corresponding port becomes link-up again), this entry will not be confined by the configured maximum number. (DI20081028000003)</li> <li>If a WAC client's IP address belongs to the trusted host list, WAC authentication window does not pop up on that client. (DT20081114000001)</li> <li>The ISM-VLAN function does not forward multicast traffic to a client if this client sends the IGMP V3 membership report to join the multicast group. (DEUR20081105000004)</li> <li>When Q-in-Q is not applied on Management VLAN, but other VLANs, traffic from Management VLAN will be double tagged at NNI port. (DI20081208000010)</li> <li>The switch will enter exception mode if a client tries to do WAC authentication and executes MSN 8.5 to login in the same time. (DT20081201000001)</li> <li>The switch does not display SIM topology correctly on FireFox 3.01 and JAVA 1.60_11B03. (DI20081218000018)</li> <li>The switch can not be managed by SIM when DES-3528 acts as the SIM member and DES-3526 as the SIM commander. (DI20081121000011)</li> <li>When a client connects to the switch, uses FTP to download data via PPPoE connection, the FTP session disconnects after running for 1 ~ 2 minutes. (DI20090111000004)</li> </ol>
v1.01.B035	The Bandwidth Control and ACL Flow Meter (flow-based bandwidth control) are inaccurate at the 1st second of traffic transmission. The allowed traffic bandwidth is around double times to the configured value. (Known Issue of 1.01.B030)
v1.01.B030	First release

\* D-Link tracking number is enclosed in ()

## Known Issues:

Firmware Version	Issues	Workaround
v1.03.B013	No new Known Issues.	None
v1.01.B035	DES-3552 has following known issues due to chipset limitation: <ol style="list-style-type: none"> <li>Flow control is not supported for packets flowing between block 1 (port</li> </ol>	None

	<ol style="list-style-type: none"> <li>1. 1~24/51/52) and block 2 (port 25~50).</li> <li>2. Traffic flowing between block 1 and block 2 does not reach line rate (max. 5% packet loss) when the packet size is between 64~97 bytes.</li> <li>3. The CPU handles control signals and the utilization will be 11~13% with default settings.</li> <li>4. When mirroring egress untagged packets in line speed, the mirrored packets can not reach line speed.</li> </ol>	
v1.01.B030	<p>The Bandwidth Control and ACL Flow Meter (flow-based bandwidth control) are inaccurate at the 1st second of traffic transmission. The allowed traffic bandwidth is around double times to the configured value. Starting from 2nd second the allowed bandwidth becomes normal.</p>	Upgrade to v1.01.B035 or above.

**Related Documentation:**

---

- DES-3528/52 Series User Manual
- DES-3528/52 Series CLI Manual