



Test Report

Product Name : 16/24 Port 10/100/1000 Ethernet Switch

Model No. : DGS-1016TL, DGS-1024TL

Applicant : D-Link Corporation

Address : No. 8, Li-Hsing Seventh Road, Science-Based
Industrial Park, Hsin-Chu, Taiwan, R.O.C.

Date of Receipt : 2003/10/30

Date of Test : 2003/11/05

Report No. : 03BH011E

The test results relate only to the samples tested.

The test report shall not be reproduced except in full without the written approval of Quietek Corporation.



Declaration of Conformity

The following products is herewith confirmed to comply with the requirements set out in the Council Directive on the Approximation of the laws of the Member States relating to Electromagnetic Compatibility Directive (89/336/EEC). The listed standard as below were applied:

The following Equipment:

Product : 16/24 Port 10/100/1000 Ethernet Switch
Trade Name : D-Link
Model Number : DGS-1016TL, DGS-1024TL

This product is herewith confirmed to comply with the requirements set out in the Council Directive on the Approximation of the laws of the Member States relating to Electromagnetic Compatibility Directive (89/336/EEC). For the evaluation regarding EMC, the following standards were applied:

RFI Emission:

EN55022: 1998+A1:2000 Class A : Emission standard
EN 61000-3-2:1995 Class A : Limits for harmonic current emission
Amendment 1:1998
Amendment 2:1998
EN 61000-3-3:1995 : Limitation of voltage fluctuation and flicker in low-voltage supply system

Immunity:

EN 55024:1998+A1: 2001 : Immunity standard

The following importer/manufacturer is responsible for this declaration:

Company Name : _____
Company Address : _____
Telephone : _____ Facsimile: _____

Person is responsible for marking this declaration:

Name (Full Name)

Position/ Title

Date

Legal Signature



Corporation
Quietek

EMC/Safety Test Laboratory
Accredited by DNV, TUV, Nemko and NVLAP

Date: Nov. 07, 2003
QTK No.: 03BH011E



Statement of Conformity

The certifies that the following designated product

Product : 16/24 Port 10/100/1000 Ethernet Switch
Trade name : D-Link
Model Number : DGS-1016TL, DGS-1024TL
Company Name : D-Link Corporation

This product is herewith confirmed to comply with the requirements set out in the Council Directive on the Approximation of the laws of the Member States relating to Electromagnetic Compatibility Directive (89/336/EEC). For the evaluation regarding EMC, the following standards were applied:

RFI Emission:

EN55022: 1998+A1: 2000 Class A : Emission standard
EN 61000-3-2:1995 Class A : Limits for harmonic current emission
Amendment 1:1998
Amendment 2:1998
EN 61000-3-3:1995 : Limitation of voltage fluctuation and flicker in low-voltage supply system

Immunity :

EN 55024:1998+A1: 2001 :Immunity standard



TEST LABORATORY


Kevin Wang / Vice president

The verification is based on a single evaluation of one sample of above-mentioned products. It does not imply an assessment of the whole production and does not permit the use of the test lab. Logo.

Test Report Certification

Test Date : 2003/11/05

Report No. : 03BH011E



Accredited by TUV, DNV, Nemko and NIST (NVLAP)

Product Name : 16/24 Port 10/100/1000 Ethernet Switch

Applicant : D-Link Corporation

Address : No. 8, Li-Hsing Seventh Road, Science-Based Industrial Park,
Hsin-Chu, Taiwan, R.O.C.

Manufacturer : Alpha Networks Inc.

Model No. : DGS-1016TL, DGS-1024TL

Rated Voltage : AC 230 V / 50 Hz

Trade Name : D-Link

Measurement Standard : EN 55022:1998+A1: 2000
EN 61000-3-2:1995, Amendment 1:1998, Amendment 2:1998
EN 61000-3-3:1995, EN 55024:1998+A1: 2001

Measurement Procedure : EN 55022:1998+A1: 2000,
EN 61000-3-2:1995, Amendment 1: 1998, Amendment 2: 1998,
EN 61000-3-3:1995, IEC 61000-4-2:1995,
IEC 61000-4-3:1995, IEC 61000-4-4:1995, IEC 61000-4-5:1995,
IEC 61000-4-6:1996, IEC 61000-4-8:1993, IEC 61000-4-11:1994

Classification : A

Test Result : Complied

The test results relate only to the samples tested.

The test report shall not be reproduced except in full without the written approval of Quietek Corporation.

Documented By : Joyce Lin
(Joyce Lin)



Tested By : Winson Wen
(Winson Wen)



Approved By : Kevin Wang
(Kevin Wang)



TABLE OF CONTENTS

Description	Page
1. General Information	6
1.1. EUT Description	6
1.2. Test Mode	6
1.3. Tested System Details.....	7
1.4. Configuration of tested System	8
1.5. EUT Exercise Software	8
1.6. Test Facility	9
2. Conducted Emission	10
2.1. Test Equipment	10
2.2. Test Setup	10
2.3. Limits.....	11
2.4. Test Procedure	11
2.5. Test Specification	11
2.6. Test Result	12
2.7. Test Photo	14
3. Radiated Emission	15
3.1. Test Equipment	15
3.2. Test Setup	15
3.3. Limits.....	16
3.4. Test Procedure	16
3.5. Test Specification	16
3.6. Test Result	17
3.7. Test Photo	19
4. Impedance Stabilization Network Emission	20
4.1. Test Equipment	20
4.2. Test Setup	20
4.3. Limits.....	21
4.4. Test Procedure	21
4.5. Test Specification	21
4.6. Test Result	22
4.7. Test Photo	23
5. Power Harmonics	24
5.1. Test Equipment	24
5.2. Test Setup	24
5.3. Limits.....	25
5.4. Test Procedure	26
5.5. Test Specification	26
5.6. Test Result	27
5.7. Test Photo	28
6. Voltage Fluctuation and Flicker	29
6.1. Test Equipment	29
6.2. Test Setup	29
6.3. Limits.....	30
6.4. Test Procedure	30

6.5.	Test Specification	30
6.6.	Test Result	31
6.7.	Test Photo	32
7.	Electrostatic Discharge (ESD).....	33
7.1.	Test Equipment	33
7.2.	Test Setup	33
7.3.	Limits.....	34
7.4.	Test Procedure	34
7.5.	Test Specification	34
7.6.	Test Result	35
7.7.	Test Photo	36
8.	Radiated Susceptibility (RS).....	37
8.1.	Test Equipment	37
8.2.	Test Setup	37
8.3.	Limits.....	38
8.4.	Test Procedure	38
8.5.	Test Specification	38
8.6.	Test Result	39
8.7.	Test Photo	40
9.	Electrical Fast Transient/Burst (EFT/B)	41
9.1.	Test Equipment	41
9.2.	Test Setup	41
9.3.	Limits.....	42
9.4.	Test Procedure	42
9.5.	Test Specification	42
9.6.	Test Result	43
9.7.	Test Photo	44
10.	Surge.....	45
10.1.	Test Equipment	45
10.2.	Test Setup	45
10.3.	Limits.....	46
10.4.	Test Procedure	46
10.5.	Test Specification	46
10.6.	Test Result	47
10.7.	Test Photo	48
11.	Conducted Susceptibility (CS).....	49
11.1.	Test Equipment	49
11.2.	Test Setup	50
11.3.	Limits.....	51
11.4.	Test Procedure	51
11.5.	Test Specification	51
11.6.	Test Result	52
11.7.	Test Photo	53
12.	Power Frequency Magnetic Field.....	54
12.1.	Test Equipment	54
12.2.	Test Setup	54
12.3.	Limits.....	55

12.4.	Test Procedure	55
12.5.	Test Specification	55
12.6.	Test Result	56
12.7.	Test Photo	57
13.	Voltage Dips and Interruption.....	58
13.1.	Test Equipment	58
13.2.	Test Setup	58
13.3.	Limits.....	59
13.4.	Test Procedure	59
13.5.	Test Specification	59
13.6.	Test Result	60
13.7.	Test Photo	61
	Attachement.....	62
	EUT Photograph	62
	Reference: Laboratory of License	

1. General Information

1.1. EUT Description

Product Name	16/24 Port 10/100/1000 Ethernet Switch
Trade Name	D-Link
Model No.	DGS-1016TL, DGS-1024TL
EUT Voltage	AC 230 V / 50 Hz

Component	
Power Cord	Non-Shielded, 1.8m

Note:

1. This EUT is a 16/24 Port 10/100/1000 Ethernet Switch.
2. The different of the each model is shown as below:
 - (1) DGS-1016TL is a 16 ports 10/100/1000 Ethernet Switch.
 - (2) DGS-1024TL is a 24 ports 10/100/1000 Ethernet Switch.

1.2. Test Mode

QuieTek has verified the construction and function in typical operation. All the test modes were carried out with the EUT in normal operation, which was shown in this test report and defined as:

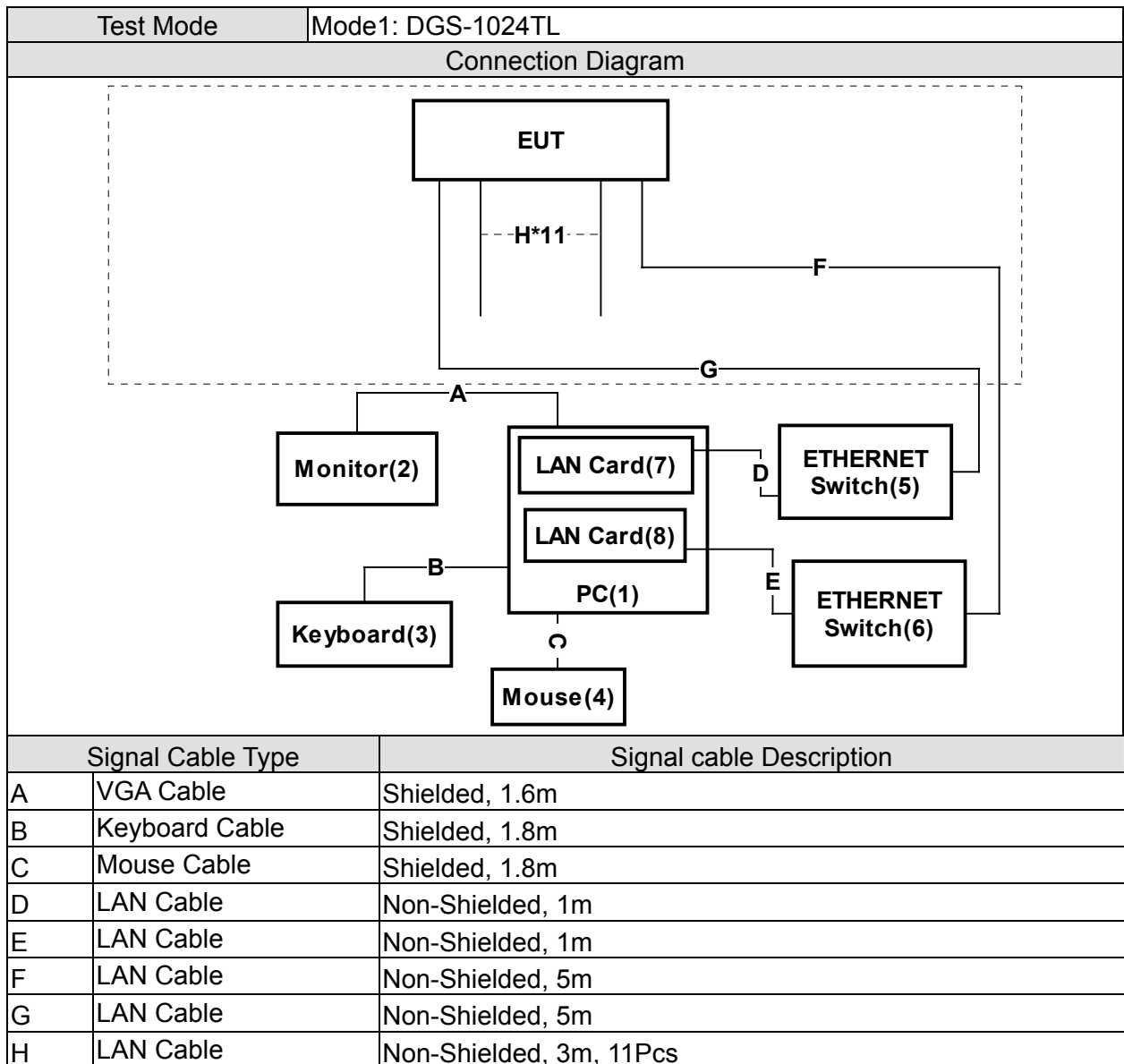
Pre-Test Mode	
EMC	Mode1: DGS-1024TL
Final Test Mode	
EMI	Mode1: DGS-1024TL
EMS	Mode1: DGS-1024TL

1.3. Tested System Details

The types for all equipments, plus descriptions of all cables used in the tested system (including inserted cards) are:

Test Mode		Mode1: DGS-1024TL			
Product		Manufacturer	Model No.	Serial No.	Power Cord
1	PC	ASUS	P2L97	92M1Y00777	Non-Shielded, 1.8m
2	Monitor	IEWSNOIC	VCDT21553-3P	10H010101110	Non-Shielded, 1.8m
3	Keyboard	HP	SK-2502C	M020303883	--
4	Mouse	MITAC	M-S34	LZE94300553	--
5	ETHERNET Switch	D-LINK	DES-3226S	N/A	--
6	ETHERNET Switch	Extreme	Summit24a	N/A	--
7	LAN Card	D-Link	DFE-500TX	0080C8 958320	--
8	LAN Card	D-Link	DFE-500TX	0080C8 95904C	--

1.4. Configuration of tested System



1.5. EUT Exercise Software

Test Mode	Mode1: DGS-1024TL	
1	Setup the EUT and simulators as shown on 1.3.	
2	Turn on the power of all equipment.	
3	Boot the PC from Hard Disk.	
4	Data will be communicated between computer and EUT.	
5	The personal computer monitors' will show the transmitting and receiving characteristics when the communication is success.	
6	Repeat the above procedure (4) to (5).	

1.6. Test Facility

Ambient conditions in the laboratory:

Items	Test Item	Required (IEC 68-1)	Actual
Temperature (°C)	EN61000-4-11	15~35	22
Humidity (%RH)		25~75	46
Barometric pressure (mbar)		860~1060	950-1000
Temperature (°C)	EN61000-4-2	15~35	22
Humidity (%RH)		30~60	46
Barometric pressure (mbar)		860~1060	950-1000
Temperature (°C)	EN61000-4-4	15~35	23
Humidity (%RH)		25~75	47
Barometric pressure (mbar)		860~1060	950-1000
Temperature (°C)	EN61000-4-5	15~35	23
Humidity (%RH)		10~75	47
Barometric pressure (mbar)		860~1060	950-1000
Temperature (°C)	EN61000-4-8	15~35	22
Humidity (%RH)		25~75	46
Barometric pressure (mbar)		860~1060	950-1000

Site Description:

September 30, 2003 Accreditation on NVLAP

NVLAP Lab Code: 200347-0



February 23, 1999 Accreditation on DNV

Statement No. : 413-99-LAB11



January 04, 1999 Accreditation on TÜV Rheinland

Certificate No.: I9865712-9901



August 30, 2003 Accreditation on Nemko

Certificate No.: ELA 165



Site Name: Quietek Corporation

Site Address: No.75-1, Wang-Yeh Valley, Yung-Hsing,
Chiung-Lin, Hsin-Chu County,
Taiwan, R.O.C.

TEL : 886-3-5928858 / FAX : 886-3-5928859

E-Mail : service@quietek.com

2. Conducted Emission

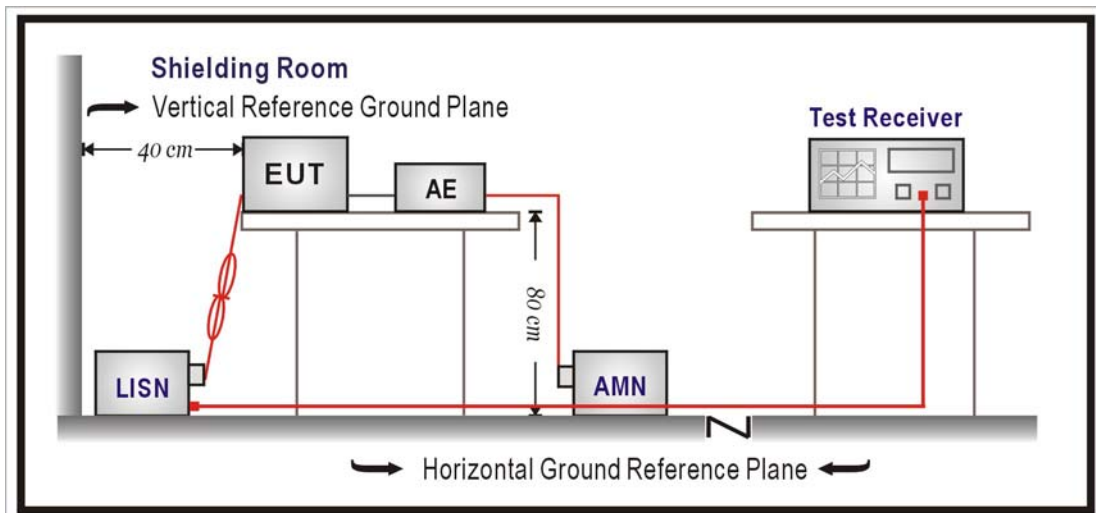
2.1. Test Equipment

The following test equipment are used during the test:

Item	Equipment	Manufacturer	Model No. / Serial No.	Last Cal.	Remark
1	Test Receiver	R & S	ESCS 30/825442/018	Sep.,2003	
2	Artificial Mains Network	R & S	ENV4200/848411/10	Feb.,2003	Peripherals
3	LISN	R & S	ESH3-Z5/825562/002	Feb.,2003	EUT
4	Pulse Limiter	R & S	ESH3-Z2/357.8810.52	Feb.,2003	
5	No.2 Shielded Room			N/A	

Note: All equipment upon which need to calibrated are with calibration period of 1 year.

2.2. Test Setup



2.3. Limits

EN 55022 Limits (dBuV)				
Frequency MHz	Class A		Class B	
	QP	AV	QP	AV
0.15 - 0.50	79	66	66-56	56-46
0.50-5.0	73	60	56	46
5.0 - 30	73	60	60	50

Remarks : In the above table, the tighter limit applies at the band edges.

2.4. Test Procedure

The EUT and simulators are connected to the main power through a line impedance stabilization network (L.I.S.N.). This provides a 50 ohm /50uH coupling impedance for the measuring equipment. The peripheral devices are also connected to the main power through a LISN that provides a 50ohm/50uH coupling impedance with 50ohm termination. (Please refers to the block diagram of the test setup and photographs.)

Both sides of A.C. line are checked for maximum conducted interference. In order to find the maximum emission, the relative positions of equipment and all of the interface cables must be changed according to EN 55022: 1998+A1: 2000 on conducted measurement. Conducted emissions were invested over the frequency range from 0.15MHz to 30MHz using a receiver bandwidth of 9kHz.

2.5. Test Specification

According to EN 55022: 1998+A1: 2000

2.6. Test Result

Product	16/24 Port 10/100/1000 Ethernet Switch		
Test Mode	Mode1: DGS-1024TL		
Date of Test	2003/11/04	Test Site	SR2
Test Condition	Line1	Test Range	0.15~30MHz

Frequency MHz	Cable Loss dB	Probe Factor dB	Reading Level dBuV	Emission Level dBuV	Limits dBuV
=====					
Quasi-Peak					
* 0.177	0.05	0.12	51.62	51.79	79.00
0.248	0.01	0.15	47.40	47.55	79.00
0.306	0.00	0.17	45.56	45.73	79.00
0.607	0.02	0.23	43.36	43.61	73.00
1.880	0.11	0.34	41.74	42.18	73.00
12.134	-0.04	0.51	30.18	30.66	73.00
Average					
0.177	0.05	0.12	41.20	41.37	66.00
0.248	0.01	0.15	38.20	38.35	66.00
0.306	0.00	0.17	36.10	36.27	66.00
* 0.607	0.02	0.23	37.90	38.15	60.00
1.880	0.11	0.34	33.50	33.94	60.00
12.134	-0.04	0.51	22.50	22.98	60.00

Note:

1. All Reading Levels are Quasi-Peak and Average value.
2. " * ", means this data is the worst emission level.
3. Emission Level = Reading Level + LISN Factor + Cable Loss.

Product	16/24 Port 10/100/1000 Ethernet Switch		
Test Mode	Mode1: DGS-1024TL		
Date of Test	2003/11/04	Test Site	SR2
Test Condition	Line2	Test Range	0.15~30MHz

Frequency MHz	Cable Loss dB	Probe Factor dB	Reading Level dBuV	Emission Level dBuV	Limits dBuV
=====					
Quasi-Peak					
* 0.181	0.05	0.12	58.70	58.87	79.00
0.244	0.01	0.15	55.58	55.73	79.00
0.302	0.00	0.17	51.26	51.43	79.00
0.545	0.01	0.22	45.00	45.23	73.00
2.306	0.13	0.36	39.50	39.98	73.00
3.943	0.25	0.41	37.58	38.24	73.00
Average					
* 0.181	0.05	0.12	51.50	51.67	66.00
0.244	0.01	0.15	49.30	49.45	66.00
0.302	0.00	0.17	45.80	45.97	66.00
0.545	0.01	0.22	41.50	41.73	60.00
2.306	0.13	0.36	37.80	38.28	60.00
3.943	0.25	0.41	36.60	37.26	60.00

Note:

1. All Reading Levels are Quasi-Peak and Average value.
2. " * ", means this data is the worst emission level.
3. Emission Level = Reading Level + LISN Factor + Cable Loss.

2.7. Test Photo

Test Mode : Mode1: DGS-1024TL
Description : Front View of Conducted Test



Test Mode : Mode1: DGS-1024TL
Description : Back View of Conducted Test



3. Radiated Emission

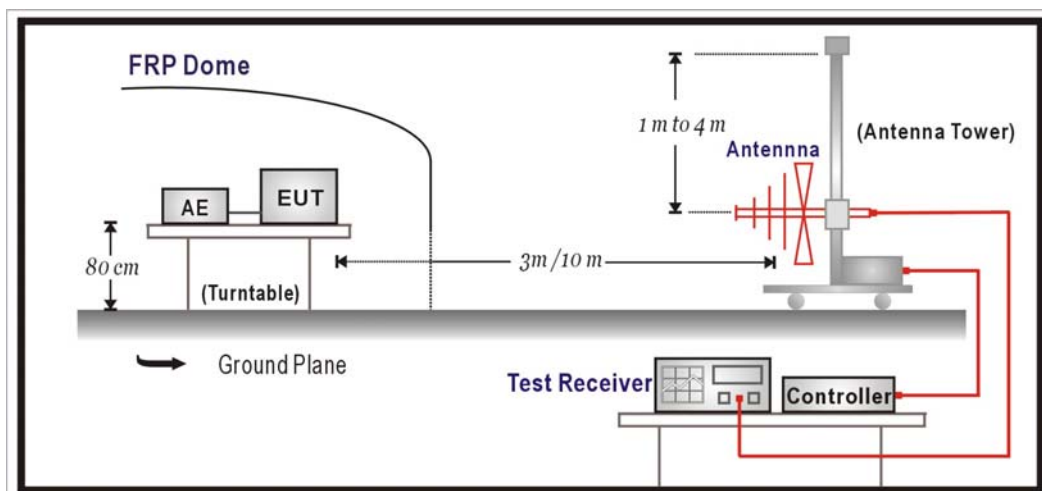
3.1. Test Equipment

The following test equipment are used during the test:

Item		Equipment	Manufacturer	Model No. / Serial No.	Last Cal.
1	X	Test Receiver	R & S	ESCS 30 / 825442/017	Jan.,2003
2	X	Spectrum Analyzer	Advantest	R3261C / 81720266	N/A
3	X	Pre-Amplifier	HP	8447D / 2944A09276	N/A
4	X	Bilog Antenna	Chase	CBL6112B / 2455	Sep.,2003
5		No.1 OATS			Sep.,2003

Note: 1. All equipments that need to calibrate are with calibration period of 1 year.
 2. Mark "X" test instruments are used to measure the final test results.

3.2. Test Setup



3.3. Limits

EN 55022 Limits (dBuV/m)				
Frequency MHz	Class A		Class B	
	Distance (m)	dBuV/m	Distance (m)	dBuV/m
30 – 230	10	40	10	30
230 – 1000	10	47	10	37

- Remark: 1. The tighter limit shall apply at the edge between two frequency bands.
 2. Distance refers to the distance in meters between the measuring instrument antenna and the closed point of any part of the device or system.
 3. RF Voltage (dBuV/m) = 20 log RF Voltage (uV/m)

3.4. Test Procedure

The EUT and its simulators are placed on a turn table which is 0.8 meter above ground. The turn table can rotate 360 degrees to determine the position of the maximum emission level. The EUT was positioned such that the distance from antenna to the EUT was 10 meters.

The antenna can move up and down between 1 meter and 4 meters to find out the maximum emission level.

All cable leaving the table-top EUT for a connection outside the test site (for example, mains cable, telephone lines, connections to auxiliary equipment located outside the test area) shall be fitted with ferrite clamps placed on the floor at the point where the cable reached the floor. Both horizontal and vertical polarization of the antenna are set on measurement. In order to find the maximum emission, all of the interface cables must be manipulated according to EN 55022: 1998+A1: 2000 on radiated measurement.

Radiated emissions were investigated over the frequency range from 30MHz to 1GHz using a receiver bandwidth of 120kHz. Radiated was performed at an antenna to EUT distance of 10 meters.

3.5. Test Specification

According to EN 55022: 1998+A1: 2000

3.6. Test Result

Product	16/24 Port 10/100/1000 Ethernet Switch		
Test Mode	Mode1: DGS-1024TL		
Date of Test	2003/11/04	Test Site	Site1
Test Condition	Horizontal	Test Range	30~1000MHz

Frequency MHz	Cable Loss dB	Probe Factor dB/m	PreAMP Reading dB	Reading Level dBuV	Emission Level dBuV/m	Margin dB	Limit dBuV/m
=====							
Horizontal:							
71.000	1.54	6.62	0.00	5.13	13.29	26.71	40.00
125.000	2.07	11.84	0.00	3.06	16.97	23.03	40.00
* 250.000	3.27	12.61	0.00	23.86	39.74	7.26	47.00
375.000	4.14	15.00	0.00	9.50	28.64	18.36	47.00
500.000	4.79	17.34	0.00	14.02	36.15	10.85	47.00
625.000	5.44	19.30	0.00	3.70	28.45	18.55	47.00
750.000	6.10	19.99	0.00	3.39	29.48	17.52	47.00
999.999	7.40	21.29	0.00	3.43	32.12	14.88	47.00

Note:

1. All Reading Levels are Quasi-Peak value.
2. “ * ”, means this data is the worst emission level.
3. Emission Level = Reading Level + Probe Factor + Cable Loss.

Product	16/24 Port 10/100/1000 Ethernet Switch		
Test Mode	Mode1: DGS-1024TL		
Date of Test	2003/11/04	Test Site	Site1
Test Condition	Vertical	Test Range	30~1000MHz

Frequency MHz	Cable Loss dB	Probe Factor dB/m	PreAMP Reading dB	Reading Level dBuV	Emission Level dBuV/m	Margin dB	Limit dBuV/m
=====							
Vertical:							
46.350	1.31	9.76	0.00	4.64	15.70	24.30	40.00
69.000	1.52	5.27	0.00	9.00	15.79	24.21	40.00
125.025	2.07	11.49	0.00	9.41	22.97	17.03	40.00
* 250.025	3.27	12.26	0.00	25.45	40.98	6.02	47.00
375.050	4.14	15.40	0.00	5.47	25.01	21.99	47.00
500.075	4.79	17.14	0.00	8.70	30.63	16.37	47.00
625.075	5.44	18.50	0.00	2.83	26.78	20.22	47.00
750.100	6.10	19.04	0.00	2.59	27.73	19.27	47.00
875.125	6.75	19.66	0.00	3.97	30.38	16.62	47.00
999.990	7.40	20.79	0.00	-1.14	27.05	19.95	47.00

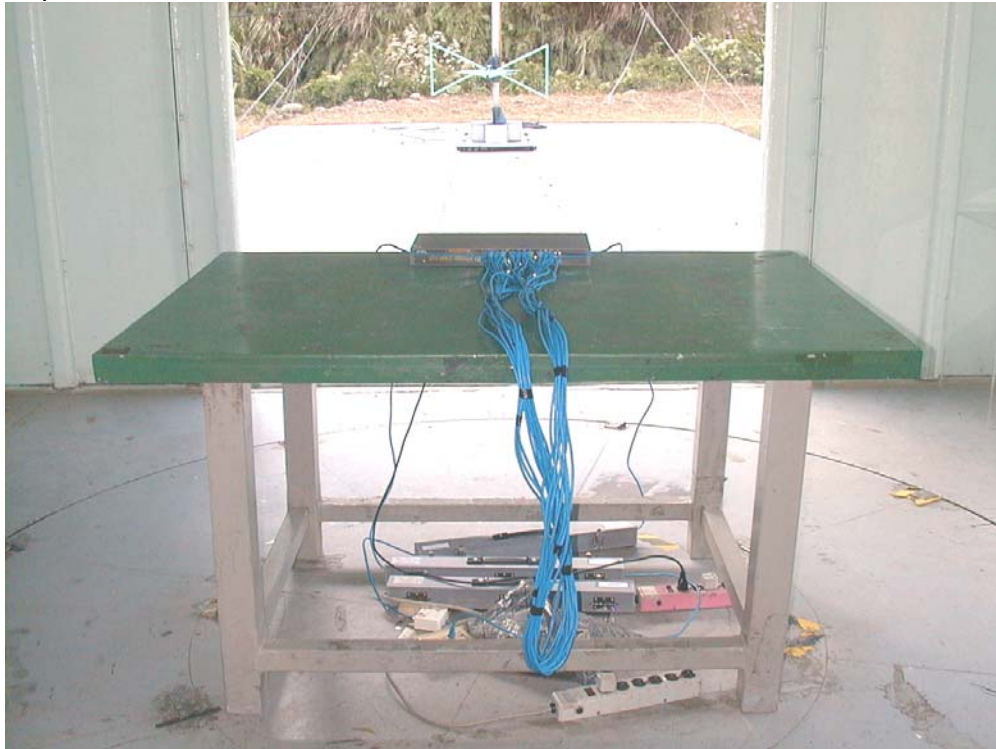
Note:

1. All Reading Levels are Quasi-Peak value.
2. “ * ”, means this data is the worst emission level.
3. Emission Level = Reading Level + Probe Factor + Cable Loss.

3.7. Test Photo

Test Mode : Mode1: DGS-1024TL

Description : Front View of Radiated Test



Test Mode : Mode1: DGS-1024TL

Description : Back View of Radiated Test



4. Impedance Stabilization Network Emission

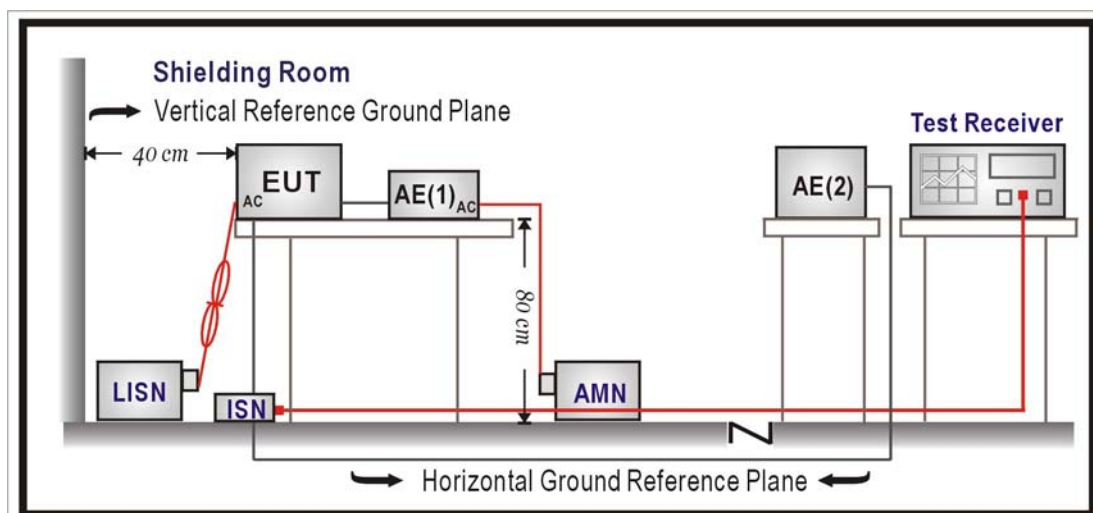
4.1. Test Equipment

The following test equipment are used during the test:

Item	Equipment	Manufacturer	Model No. / Serial No.	Last Cal.	Remark
1	Test Receiver	R & S	ESCS 30/825442/018	Sep.,2003	
2	Artificial Mains Network	R & S	ENV4200/848411/10	Feb.,2003	Peripherals
3	LISN	R & S	ESH3-Z5/825562/002	Feb.,2003	EUT
4	Pulse Limiter	R & S	ESH3-Z2/357.8810.52	Feb.,2003	
5	4-wire ISN	R & S	ENY41 / 837032/001	Feb.,2003	
6	Double 2-Wire ISN	R & S	ENY22 / 835354/008	Feb.,2003	
7	No.2 Shielded Room			N/A	

Note: All equipment upon which need to calibrated are with calibration period of 1 year.

4.2. Test Setup



4.3. Limits

EN 55022 Limits (dBUV)				
Frequency MHz	Class A		Class B	
	QP	AV	QP	AV
0.15 – 0.50	97-87	84-74	84-74	74-64
0.50 – 30	87	74	74	64

Remarks:

1. The limit decreases linearly with the logarithm of the frequency in the range 0.15 MHz~0.50 MHz.

4.4. Test Procedure

The EUT and simulators are connected to the main power through a line impedance stabilization network (L.I.S.N.). This provides a 50 ohm /50uH coupling impedance for the measuring equipment. The peripheral devices are also connected to the main power through a LISN that provides a 50ohm/50uH coupling impedance with 50ohm termination. (Please refers to the block diagram of the test setup and photographs.)

The mains voltage shall be supplied to the EUT via the LISN when the measurement of telecommunication port is performed. The common mode disturbances at the telecommunication port shall be connected to the ISN, which is 150 ohm impedance.

Both alternative cables are tested related to the LCL requested. The measurement range is from 150kHz to 30MHz. The bandwidth of measurement is set to 9kHz. The 60dB LCL ISN is used for cat. 5 cable, 50dB LCL ISN is used for cat. 3 and 80dB LCL is wed for alternative one.

4.5. Test Specification

According to EN 55022: 1998+A1: 2000

4.6. Test Result

Product	16/24 Port 10/100/1000 Ethernet Switch		
Test Mode	Mode1: DGS-1024TL		
Date of Test	2003/11/04	Test Site	SR2
Test Condition	Line1	Test Range	0.15-30MHz

Frequency MHz	Cable Loss dB	Probe Factor dB	Reading Level dBuV	Emission Level dBuV	Limits dBuV
=====					
Quasi-Peak					
0.189	0.05	10.43	25.72	36.20	95.08
0.380	0.02	10.43	30.56	41.01	89.27
0.548	0.01	10.43	30.90	41.33	87.00
1.158	0.06	10.38	50.80	61.25	87.00
* 1.494	0.09	10.37	51.88	62.34	87.00
2.181	0.11	10.35	49.22	59.68	87.00
Average					
0.189	0.05	10.43	22.20	32.68	82.08
0.380	0.02	10.43	23.10	33.55	76.28
0.548	0.01	10.43	18.70	29.13	74.00
1.158	0.06	10.38	36.60	47.05	74.00
* 1.494	0.09	10.37	37.20	47.66	74.00
2.181	0.11	10.35	28.10	38.56	74.00

Note:

1. All Reading Levels are Quasi-Peak and Average value.
2. " * ", means this data is the worst emission level.
3. Emission Level = Reading Level + LISN Factor + Cable Loss.

4.7. Test Photo

Test Mode : Mode1: DGS-1024TL

Description : Front View of Conducted Telecommunication Ports-LAN Cable



Test Mode : Mode1: DGS-1024TL

Description : Back View of Conducted Telecommunication Ports-LAN Cable



5. Power Harmonics

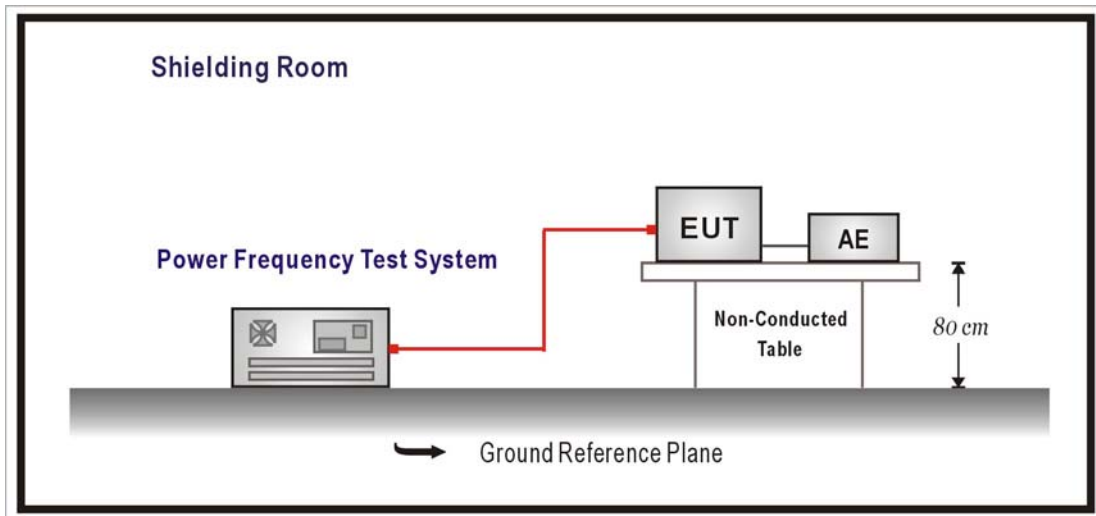
5.1. Test Equipment

The following test equipment are used during the test:

Item	Equipment	Manufacturer	Model No. / Serial No.	Last Cal.
1	Power Frequency Test System	HAEFELY	PHF-555 / 080 419-29	Apr.,2003
2	No.1 Shielded Room			N/A

Note: All equipment upon which need to calibrated are with calibration period of 1 year.

5.2. Test Setup



5.3. Limits

➤Limits of Class A Harmonics Currents

Harmonics Order n	Maximum Permissible harmonic current A	Harmonics Order n	Maximum Permissible harmonic current A
Odd harmonics		Even harmonics	
3	2.30	2	1.08
5	1.14	4	0.43
7	0.77	6	0.30
9	0.40	$8 \leq n \leq 40$	$0.23 * 8/n$
11	0.33		
13	0.21		
$15 \leq n \leq 39$	$0.15 * 15/n$		

➤Limits of Class B Harmonics Currents

For Class B equipment, the harmonic of the input current shall not exceed the maximum permissible values given in table that is the limit of Class A multiplied by a factor of 1.5.

➤Limits of Class C Harmonics Currents

Harmonics Order n	Maximum Permissible harmonic current Expressed as a percentage of the input current at the fundamental frequency %
2	2
3	$30 \cdot \lambda^*$
5	10
7	7
9	5
$11 \leq n \leq 39$ (odd harmonics only)	3

* λ is the circuit power factor

➤Limits of Class D Harmonics Currents

Harmonics Order n	Maximum Permissible harmonic current per watt mA/W	Maximum Permissible harmonic current A
3	3.4	2.30
5	1.9	1.14
7	1.0	0.77
9	0.5	0.40
11	0.35	0.33
$11 \leq n \leq 39$ (odd harmonics only)	$3.85/n$	See limit of Class A

5.4. Test Procedure

The EUT is supplied in series with power analyzer from a power source having the same normal voltage and frequency as the rated supply voltage and the equipment under test. And the rated voltage at the supply voltage of EUT of 0.94 times and 1.06 times shall be performed.

5.5. Test Specification

According to EN 61000-3-2:1995, , Amendment 1:1998, Amendment 2:1998 and EN 61000-3-3:1995

5.6. Test Result

Product	16/24 Port 10/100/1000 Ethernet Switch		
Test Mode	Mode1: DGS-1024TL		
Date of Test	2003/11/05	Test Site	SR1
Test Condition	Power Harmonics	Test Range	

Hn	Harmonic Current		Results		Harmonic %Fund.	Voltage Limit	Results Result
	AMPS	LO Limit	HI Limit	Result			
0	0.000	0.000	0.000	PASS	0.000	NaN	PASS
1	0.171	NaN	NaN	PASS	100.000	100.001	PASS
2	0.001	1.080	1.080	PASS	0.005	0.200	PASS
3	0.155	2.300	2.300	PASS	0.007	0.900	PASS
4	0.001	0.430	0.430	PASS	0.004	0.200	PASS
5	0.145	1.140	1.140	PASS	0.006	0.400	PASS
6	0.001	0.300	0.300	PASS	0.003	0.200	PASS
7	0.132	0.770	0.770	PASS	0.002	0.300	PASS
8	0.001	0.230	0.230	PASS	0.001	0.200	PASS
9	0.115	0.400	0.400	PASS	0.005	0.200	PASS
10	0.001	0.184	0.184	PASS	0.002	0.200	PASS
11	0.097	0.330	0.330	PASS	0.003	0.100	PASS
12	0.001	0.153	0.153	PASS	0.004	0.100	PASS
13	0.078	0.210	0.210	PASS	0.003	0.100	PASS
14	0.000	0.131	0.131	PASS	0.004	0.100	PASS
15	0.060	0.150	0.150	PASS	0.003	0.100	PASS
16	0.000	0.115	0.115	PASS	0.003	0.100	PASS
17	0.043	0.132	0.132	PASS	0.001	0.100	PASS
18	0.000	0.102	0.102	PASS	0.003	0.100	PASS
19	0.029	0.118	0.118	PASS	0.002	0.100	PASS
20	0.000	0.092	0.092	PASS	0.001	0.100	PASS
21	0.018	0.107	0.107	PASS	0.002	0.100	PASS
22	0.000	0.084	0.084	PASS	0.003	0.100	PASS
23	0.011	0.098	0.098	PASS	0.002	0.100	PASS
24	0.000	0.077	0.077	PASS	0.005	0.100	PASS
25	0.009	0.090	0.090	PASS	0.002	0.100	PASS
26	0.000	0.071	0.071	PASS	0.003	0.100	PASS
27	0.010	0.083	0.083	PASS	0.002	0.100	PASS
28	0.000	0.066	0.066	PASS	0.001	0.100	PASS
29	0.010	0.078	0.078	PASS	0.002	0.100	PASS
30	0.000	0.061	0.061	PASS	0.001	0.100	PASS
31	0.009	0.073	0.073	PASS	0.001	0.100	PASS
32	0.000	0.058	0.058	PASS	0.001	0.100	PASS
33	0.007	0.068	0.068	PASS	0.004	0.100	PASS
34	0.000	0.054	0.054	PASS	0.002	0.100	PASS
35	0.005	0.064	0.064	PASS	0.001	0.100	PASS
36	0.000	0.051	0.051	PASS	0.002	0.100	PASS
37	0.003	0.061	0.061	PASS	0.002	0.100	PASS
38	0.000	0.048	0.048	PASS	0.004	0.100	PASS
39	0.002	0.058	0.058	PASS	0.001	0.100	PASS
40	0.000	0.046	0.046	PASS	0.003	0.100	PASS

5.7. Test Photo

Test Mode : Mode1: DGS-1024TL

Description : Power Harmonics



6. Voltage Fluctuation and Flicker

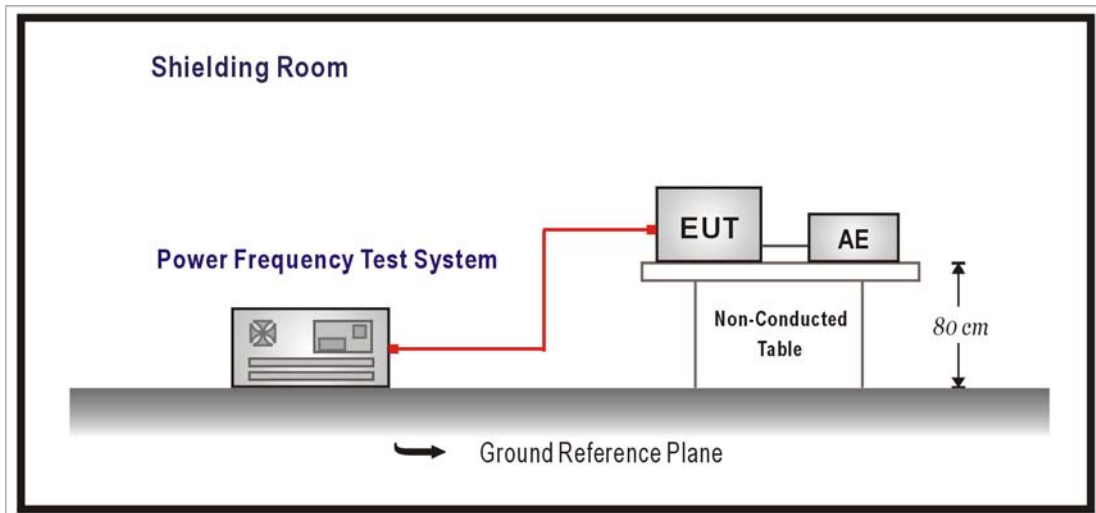
6.1. Test Equipment

The following test equipment are used during the test:

Item	Equipment	Manufacturer	Model No. / Serial No.	Last Cal.
1	Power Frequency Test System	HAEFELY	PHF-555 / 080 419-29	Apr.,2003
2	No.1 Shielded Room			N/A

Note: All equipment upon which need to calibrated are with calibration period of 1 year.

6.2. Test Setup



6.3. Limits

The following limits apply:

- the value of P_{st} shall not be greater than 1.0;
- the value of P_{1t} shall not be greater than 0.65;
- the value of $d(t)$ during a voltage change shall not exceed 3.3 % for more than 500 ms;
- the relative steady-state voltage change, d_c , shall not exceed 3.3 %;
- the maximum relative voltage change, d_{max} , shall not exceed;
 - a) 4 % without additional conditions;
 - b) 6 % for equipment which is:
 - switched manually, or
 - switched automatically more frequently than twice per day, and also has either a delayed restart (the delay being not less than a few tens of seconds), or manual restart, after a power supply interruption.

NOTE The cycling frequency will be further limited by the P_{st} and P_{1t} limit. For example: a d_{max} of 6% producing a rectangular voltage change characteristic twice per hour will give a P_{1t} of about 0.65.

- c) 7 % for equipment which is:
 - attended whilst in use (for example: hair dryers, vacuum cleaners, kitchen equipment such as mixers, garden equipment such as lawn mowers, portable tools such as electric drills), or
 - switched on automatically, or is intended to be switched on manually, no more than twice per day, and also has either a delayed restart (the delay being not less than a few tens of seconds) or manual restart, after a power supply interruption.

P_{st} and P_{1t} requirements shall not be applied to voltage changes caused by manual switching.

6.4. Test Procedure

The EUT is supplied in series with power analyzer from a power source having the same normal voltage and frequency as the rated supply voltage and the equipment under test. And the rated voltage at the supply voltage of EUT of 0.94 times and 1.06 times shall be performed.

6.5. Test Specification

According to EN 61000-3-3:1995

6.6. Test Result

Product	16/24 Port 10/100/1000 Ethernet Switch		
Test Mode	Mode1: DGS-1024TL		
Date of Test	2003/11/05	Test Site	SR1
Test Condition	Flicker	Test Range	

TEST SETUP

Test Freq.: 50.00 Hz. Test Voltage: 230.0 vac
 Waveform : SINE
 Test Time: 10.0 min. Tshort: 1.0 min.
 Prog. Zo Enabled: YES Prog. Zo: 0.000
 Voltage Change less than once per Hour: NO
 Impedance selected: IEC-725 STD. REF.
 Synthetic R+L Enabled: NO
 Resistance: 0.400 Ohms Inductance: 795.775 uH

TEST DATA

Result: PASS

	EUT Data	Limit	Result	Test Enabled
Pst max	0.010	1.00	PASS	true
Plt max	0.010	0.65	PASS	true
dc %	0.00	3.00	PASS	true
dmax %	0.00	4.00	PASS	true
d(t) sec.	0.00	0.20	PASS	true
Power Source Data				
Source Pst max	0.024	0.400	PASS	true
% THD	0.02	3.00	PASS	true

6.7. Test Photo

Test Mode : Mode1: DGS-1024TL

Description : Voltage Fluctuation and Flicker Test Setup



7. Electrostatic Discharge (ESD)

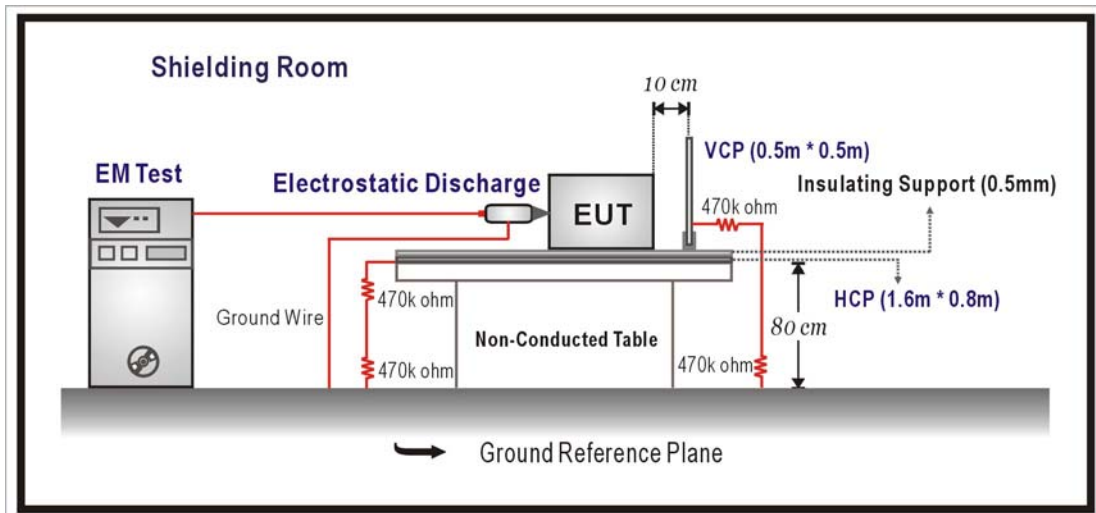
7.1. Test Equipment

The following test equipment are used during the test:

Item	Equipment	Manufacturer	Model No. / Serial No.	Last Cal.
1	EM TEST	EM	UCS 500-M / UCS500M4	Jan.,2003
2	Electrostatic Discharge	EM	P18 / 1198-34	Jan.,2003
3	Horizontal Coupling Plane(HCP)	QuieTek	HCP AL50	N/A
4	Vertical Coupling Plane(VCP)	QuieTek	VCP AL50	N/A
5	No.1 Shielded Room			N/A

Note: All equipment upon which need to calibrated are with calibration period of 1 year.

7.2. Test Setup



7.3. Limits

Item	Environmental Phenomena	Units	Test Specification	Performance Criteria
Enclosure Port	Electrostatic Discharge	kV(Charge Voltage)	±8 Air Discharge ±4 Contact Discharge	B

7.4. Test Procedure

Direct application of discharges to the EUT:

Contact discharge was applied only to conductive surfaces of the EUT.

Air discharges were applied only to non-conductive surfaces of the EUT.

During the test, it was performed with single discharges. For the single discharge time between successive single discharges will be keep longer 1 second. It was at least ten single discharges with positive and negative at the same selected point. The selected point, which was performed with electrostatic discharge, was marked on the red label of the EUT.

Indirect application of discharges to the EUT:

Vertical Coupling Plane (VCP):

The coupling plane, of dimensions 0.5m x 0.5m, is placed parallel to, and positioned at a distance 0.1m from, the EUT, with the Discharge Electrode touching the coupling plane.

The four faces of the EUT will be performed with electrostatic discharge. It was at least ten single discharges with positive and negative at the same selected point.

Horizontal Coupling Plane (HCP):

The coupling plane is placed under to the EUT. The generator shall be positioned vertically at a distance of 0.1m from the EUT, with the Discharge Electrode touching the coupling plane.

The four faces of the EUT will be performed with electrostatic discharge. It was at least ten single discharges with positive and negative at the same selected point.

7.5. Test Specification

According to IEC 61000-4-2:1995

7.6. Test Result

Product	16/24 Port 10/100/1000 Ethernet Switch		
Test Mode	Mode1: DGS-1024TL		
Date of Test	2003/11/05	Test Site	SR1
Test Condition	ESD	Test Range	

Item	Amount of Discharge	Voltage	Required Criteria	Complied To Criteria (A,B,C)	Results
Air Discharge	10	+8kV	B	A	Pass
	10	-8kV	B	A	Pass
Contact Discharge	10	+4kV	B	A	Pass
	10	-4kV	B	A	Pass
Indirect Discharge (HCP)	50	+4kV	B	A	Pass
	50	-4kV	B	A	Pass
Indirect Discharge (VCP Front)	50	+4kV	B	A	Pass
	50	-4kV	B	A	Pass
Indirect Discharge (VCP Left)	50	+4kV	B	A	Pass
	50	-4kV	B	A	Pass
Indirect Discharge (VCP Back)	50	+4kV	B	A	Pass
	50	-4kV	B	A	Pass
Indirect Discharge (VCP Right)	50	+4kV	B	A	Pass
	50	-4kV	B	A	Pass

NR: No Requirement

- Meet criteria A: Operate as intended during and after the test
- Meet criteria B: Operate as intended after the test
- Meet criteria C: Loss/Error of function
- Additional Information
 - EUT stopped operation and could / could not be reset by operator at ____ kV.
 - No false alarms or other malfunctions were observed during or after the test.

Remark:

The Contact discharges were applied-at least total 200 discharges at a minimum of four test points.

7.7. Test Photo

Test Mode : Mode1: DGS-1024TL

Description : ESD Test Setup



8. Radiated Susceptibility (RS)

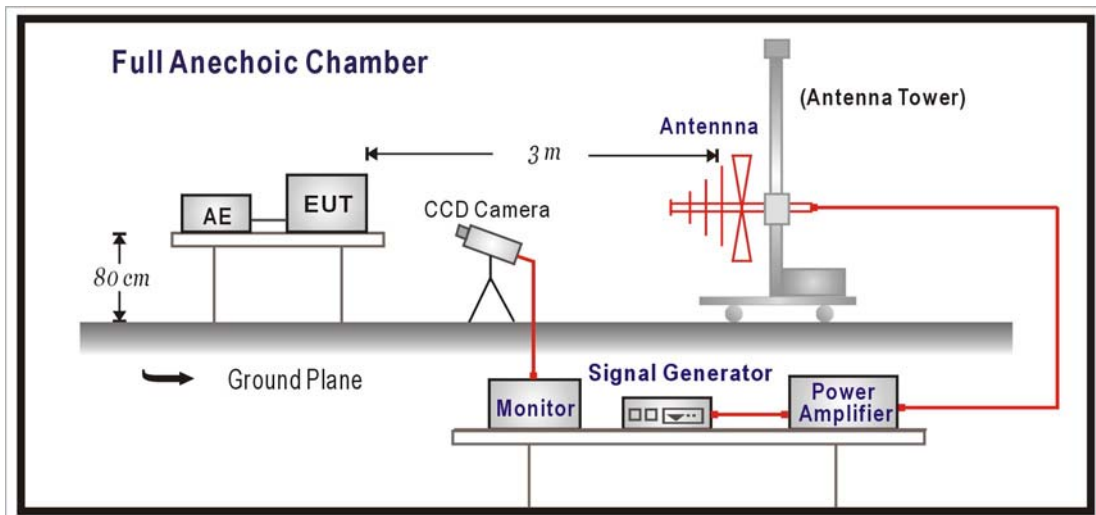
8.1. Test Equipment

The following test equipment are used during the test:

Item	Equipment	Manufacturer	Model No. / Serial No.	Last Cal.
1	Signal Generator	R & S	SYM02 / 825454/029	Jan.,2003
2	Power Amplifier	A & R	100W10000M7 / A285000010	N/A
3	RF Power Amplifier	OPHIRRF	5022F / 1075	N/A
4	Bilog Antenna	Chase	CBL6112B / 2452	Sep.,2003
5	Power Meter	R & S	NRVD / 100219	Sep.,2003
6	Directional Coupler	A & R	DC6180 / 22735	Feb.,2003
7	No.4 EMC Fully Chamber			Jul.,2003

Note: All equipment upon which need to calibrated are with calibration period of 1 year.

8.2. Test Setup



8.3. Limits

Item	Environmental Phenomena	Units	Test Specification	Performance Criteria
Enclosure Port				
	Radio-Frequency	MHz	80-1000	A
	Electromagnetic Field Amplitude Modulated	V/m(Un-modulated, rms) % AM (1kHz)	3 80	

8.4. Test Procedure

The EUT and load, which are placed on a table that is 0.8 meter above ground, are placed with one coincident with the calibration plane such that the distance from antenna to the EUT was 3 meters.

Both horizontal and vertical polarization of the antenna and four sides of the EUT are set on measurement.

In order to judge the EUT performance, a CCD camera is used to monitor EUT screen.

All the scanning conditions are as follows:

Condition of Test	Remarks
1. Field Strength	3 V/m Level 2
2. Radiated Signal	AM 80% Modulated with 1kHz
3. Scanning Frequency	80MHz - 1000MHz
4 Dwell Time	3 Seconds
5. Frequency step size Δf :	1%
6. The rate of Swept of Frequency	1.5×10^{-3} decades/s

8.5. Test Specification

According to IEC 61000-4-3:1995

8.6. Test Result

Product	16/24 Port 10/100/1000 Ethernet Switch		
Test Mode	Mode1: DGS-1024TL		
Date of Test	2003/11/05	Test Site	Chamber4
Test Condition	RS	Test Range	80~1000

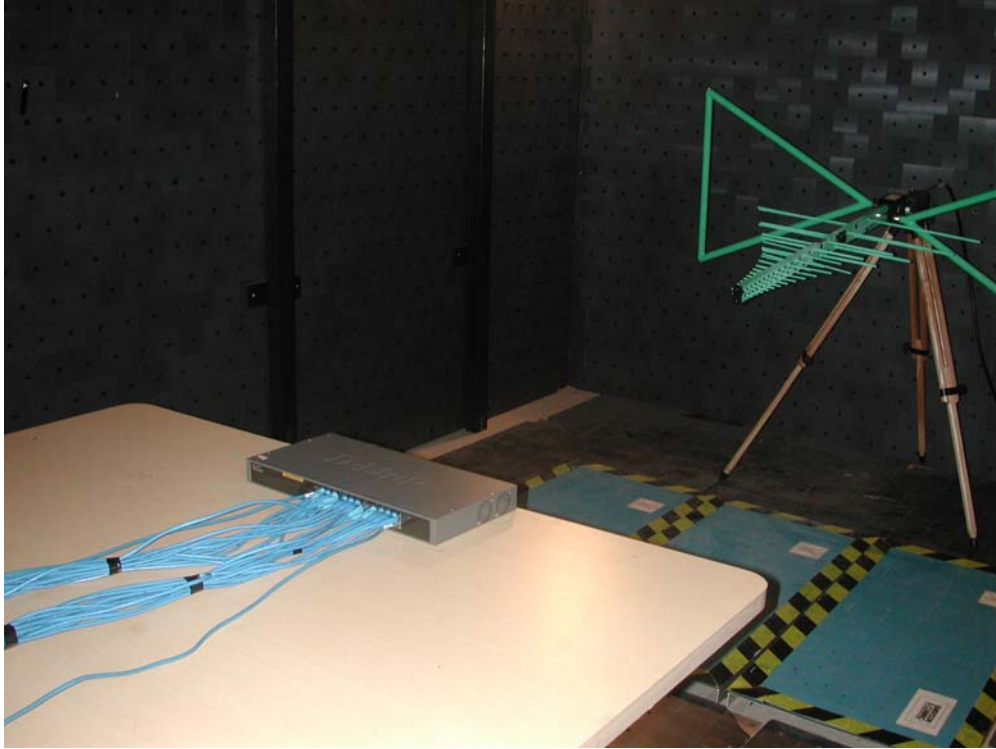
Frequency (MHz)	Position (Angle)	Polarity (H or V)	Field Strength (V/m)	Required Criteria	Complied To Criteria (A,B,C)	Results
80-1000	0	H	3	A	A	Pass
80-1000	90	H	3	A	A	Pass
80-1000	180	H	3	A	A	Pass
80-1000	270	H	3	A	A	Pass
80-1000	0	V	3	A	A	Pass
80-1000	90	V	3	A	A	Pass
80-1000	180	V	3	A	A	Pass
80-1000	270	V	3	A	A	Pass

- Meet criteria A : Operate as intended during and after the test
- Meet criteria B : Operate as intended after the test
- Meet criteria C : Loss/Error of function
- Additional Information
 - EUT stopped operation and could / could not be reset by operator at _____ V/m at frequency MHz.
 - No false alarms or other malfunctions were observed during or after the test. The acceptance criteria were met, and the EUT passed the test.

8.7. Test Photo

Test Mode : Mode1: DGS-1024TL

Description : Radiated Susceptibility Test Setup



9. Electrical Fast Transient/Burst (EFT/B)

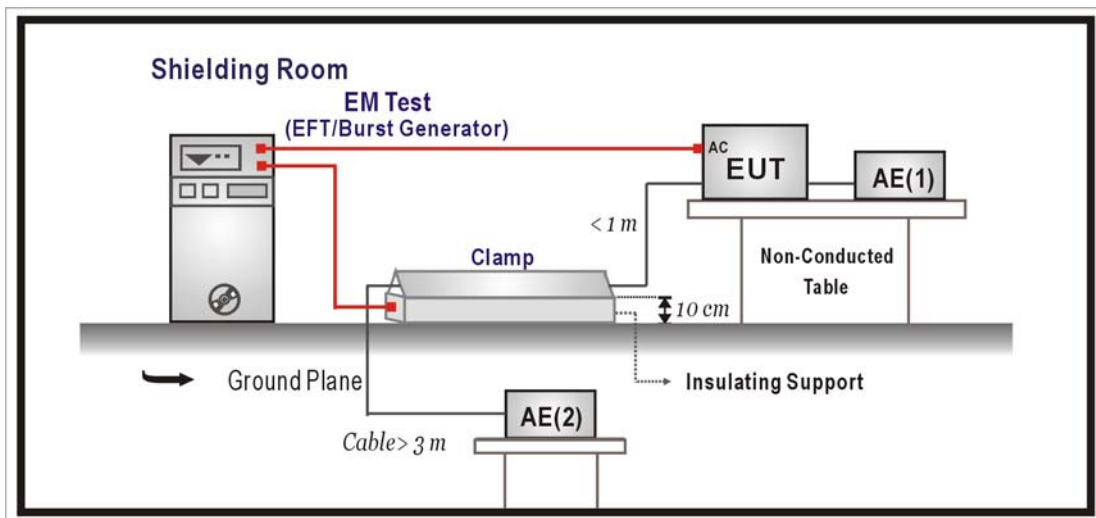
9.1. Test Equipment

The following test equipment are used during the test:

Item	Equipment	Manufacturer	Model No. / Serial No.	Last Cal.
1	EM TEST	EM	UCS 500-M / UCS500M4	Jan.,2003
2	Clamp	HAEFELY	093 506.1 / 083 593-23	Jan.,2003
3	No.1 Shielded Room			N/A

Note: All equipment upon which need to calibrated are with calibration period of 1 year.

9.2. Test Setup



9.3. Limits

Item	Environmental Phenomena	Units	Test Specification	Performance Criteria
Signal Ports and Telecommunication Ports				
	Fast Transients Common Mode	kV (Peak) Tr/Th ns Rep. Frequency kHz	± 0.5 5/50 5	B
Input DC Power Ports				
	Fast Transients Common Mode	kV (Peak) Tr/Th ns Rep. Frequency kHz	± 0.5 5/50 5	B
Input AC Power Ports				
	Fast Transients Common Mode	kV (Peak) Tr/Th ns Rep. Frequency kHz	± 1 5/50 5	B

9.4. Test Procedure

The EUT and load are placed on a table that is 0.8 meter above a metal ground plane measured 1m*1m min. and 0.65mm thick min. And projected beyond the EUT by at least 0.1m on all sides.

For Signal Ports and Telecommunication Ports:

The EFT interference signal is through a coupling clamp device couples to the signal and control lines of the EUT with burst noise for 1min.

For Input DC and AC Power Ports:

The EUT is connected to the power mains through a coupling device that directly couples the EFT interference signal.

Each of the Line and Neutral conductors is impressed with burst noise for 1 min.

The length of power cord between the coupling device and the EUT shall be 1m.

9.5. Test Specification

According to IEC 61000-4-4:1995

9.6. Test Result

Product	16/24 Port 10/100/1000 Ethernet Switch		
Test Mode	Mode1: DGS-1024TL		
Date of Test	2003/11/05	Test Site	SR1
Test Condition	EFT/B	Test Range	

Inject Line	Polarity	Voltage kV	Inject Time (Second)	Inject Method	Required Criteria	Complied to Criteria	Result
L	±	1kV	60	Direct	B	A	Pass
N	±	1kV	60	Direct	B	A	Pass
PE	±	1kV	60	Direct	B	A	Pass
L+N	±	1kV	60	Direct	B	A	Pass
L+PE	±	1kV	60	Direct	B	A	Pass
N+PE	±	1kV	60	Direct	B	A	Pass
L+N+PE	±	1kV	60	Direct	B	A	Pass
LAN	±	0.5kV	60	Direct	B	A	Pass

- Meet criteria A : Operate as intended during and after the test
- Meet criteria B : Operate as intended after the test
- Meet criteria C : Loss/Error of function
- Additional Information
 - EUT stopped operation and could / could not be reset by operator at _____ kV of Line _____.
 - No false alarms or other malfunctions were observed during or after the test.

9.7. Test Photo

Test Mode : Mode1: DGS-1024TL

Description : EFT/B Test Setup



Test Mode : Mode1: DGS-1024TL

Description : EFT/B Test Setup-Clamp (LAN Cable)



10. Surge

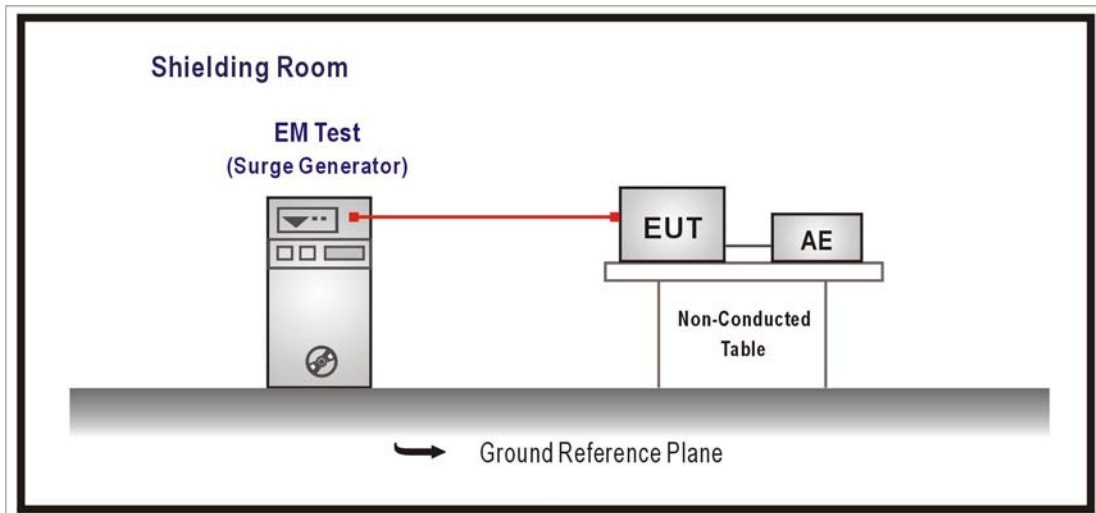
10.1. Test Equipment

The following test equipment are used during the test:

Item	Equipment	Manufacturer	Model No. / Serial No.	Last Cal.
1	EM TEST	EM	UCS 500-M / UCS500M4	Jan.,2003
2	No.1 Shielded Room			N/A

Note: All equipment upon which need to calibrated are with calibration period of 1 year.

10.2. Test Setup



10.3. Limits

Item	Environmental Phenomena	Units	Test Specification	Performance Criteria
Signal Ports and Telecommunication Ports(See 1) and 2))				
	Surges	Tr/Th us	1.2/50 (8/20)	B
	Line to Ground	kV	± 1	
Input DC Power Ports				
	Surges	Tr/Th us	1.2/50 (8/20)	B
	Line to Ground	kV	± 0.5	
AC Input and AC Output Power Ports				
	Surges	Tr/Th us	1.2/50 (8/20)	B
	Line to Line	kV	± 1	
	Line to Ground	kV	± 2	

Notes:

- 1) Applicable only to ports which according to the manufacturer’s may directly to outdoor cables.
- 2) Where normal functioning cannot be achieved because of the impact of the CDN on the EUT, no immunity test shall be required.

10.4. Test Procedure

The EUT and its load are placed on a table that is 0.8 meter above a metal ground plane measured 1m*1m min. and 0.65mm thick min. And projected beyond the EUT by at least 0.1m on all sides. The length of power cord between the coupling device and the EUT shall be 2m or less.

For Input and Output AC Power or DC Input and DC Output Power Ports:

The EUT is connected to the power mains through a coupling device that directly couples the Surge interference signal.

The surge noise shall be applied synchronized to the voltage phase at 0⁰, 90⁰, 180⁰, 270⁰ and the peak value of the a.c. voltage wave. (Positive and negative)

Each of Line-Earth and Line-Line is impressed with a sequence of five surge voltages with interval of 1 min.

10.5. Test Specification

According to IEC 61000-4-5:1995

10.6. Test Result

Product	16/24 Port 10/100/1000 Ethernet Switch		
Test Mode	Mode1: DGS-1024TL		
Date of Test	2003/11/05	Test Site	SR1
Test Condition	Surge	Test Range	

Inject Line	Polarity	Angle	Voltage kV	Time Interval (Second)	Inject Method	Required Criteria	Complied to Criteria	Result
L-N	±	0	1kV	60	Direct	B	A	Pass
L-N	±	90	1kV	60	Direct	B	A	Pass
L-N	±	180	1kV	60	Direct	B	A	Pass
L-N	±	270	1kV	60	Direct	B	A	Pass
N-PE	±	0	2kV	60	Direct	B	A	Pass
N-PE	±	90	2kV	60	Direct	B	A	Pass
N-PE	±	180	2kV	60	Direct	B	A	Pass
N-PE	±	270	2kV	60	Direct	B	A	Pass
L-PE	±	0	2kV	60	Direct	B	A	Pass
L-PE	±	90	2kV	60	Direct	B	A	Pass
L-PE	±	180	2kV	60	Direct	B	A	Pass
L-PE	±	270	2kV	60	Direct	B	A	Pass

- Meet criteria A : Operate as intended during and after the test
- Meet criteria B : Operate as intended after the test
- Meet criteria C : Loss/Error of function
- Additional Information
 - EUT stopped operation and could / could not be reset by operator at _____ kV of Line _____.
 - No false alarms or other malfunctions were observed during or after the test.

10.7. Test Photo

Test Mode : Mode1: DGS-1024TL

Description : SURGE Test Setup



11. Conducted Susceptibility (CS)

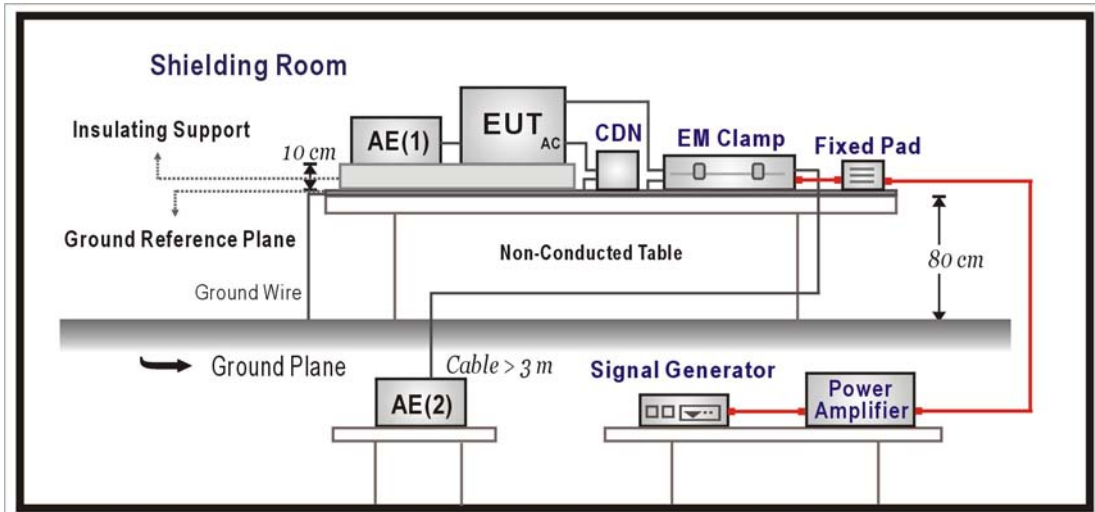
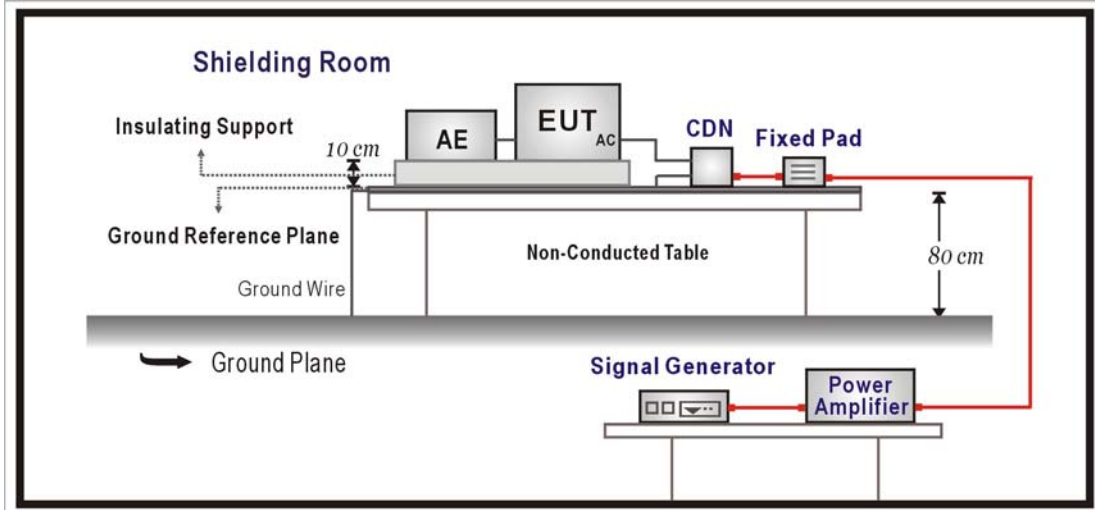
11.1. Test Equipment

The following test equipment are used during the test:

Item	Equipment	Manufacturer	Model No. / Serial No.	Last Cal.
1	Signal Generator	R & S	SYM01 / 10065	Jan.,2003
2	Power Amplifier	A & R	150A220 / 23076	N/A
3	Power Meter	HP	EPM-4418A / GB37482040	Feb.,2003
4	Power Sensor	Agilent	8482A / MY41091031	Aug.,2003
5	Directional Coupler	A & R	DC2600 / 23325	Feb.,2003
6	CDN	Lüthi	CDN L-801 M1 / 2047	Jun.,2003
7	CDN	Lüthi	CDN L-801 M2/M3 / 2043	Jun.,2003
8	FIXED PAD	TRILITHIC	HFP-525-3/6-NF/NF / N/A	N/A
9	EM Clamp	Lüthi	EM101 / 3552C	Apr.,2003
10	No.5 Shielded Room			N/A

Note: All equipment upon which need to calibrated are with calibration period of 1 year.

11.2. Test Setup



11.3. Limits

Item	Environmental Phenomena	Units	Test Specification	Performance Criteria
Signal Ports and Telecommunication Ports				
	Radio-Frequency Continuous Conducted	MHz	0.15-80	A
		V (rms, Un-modulated) % AM (1kHz)	3 80	
Input DC Power Ports				
	Radio-Frequency Continuous Conducted	MHz	0.15-80	A
		V (rms, Un-modulated) % AM (1kHz)	3 80	
Input AC Power Ports				
	Radio-Frequency Continuous Conducted	MHz	0.15-80	A
		V (rms, Un-modulated) % AM (1kHz)	3 80	

11.4. Test Procedure

The EUT are placed on a table that is 0.8 meter height, and a Ground reference plane on the table, EUT are placed upon table and use a 10cm insulation between the EUT and Ground reference plane.

For Signal Ports and Telecommunication Ports

The disturbance signal is through a coupling and decoupling networks (CDN) or EM-clamp device couples to the signal and Telecommunication lines of the EUT.

For Input DC and AC Power Ports

The EUT is connected to the power mains through a coupling and decoupling networks for power supply lines. And directly couples the disturbances signal into EUT.

Used CDN-M2 for two wires or CDN-M3 for three wires.

All the scanning conditions are as follows:

Condition of Test	Remarks
1 Field Strength	130dBuV(3V) Level 2
2 Radiated Signal	AM 80% Modulated with 1kHz
3 Scanning Frequency	0.15MHz – 80MHz
4 Dwell Time	3 Seconds
5 Frequency step size Δf :	1%
6 The rate of Swept of Frequency	1.5×10^{-3} decades/s

11.5. Test Specification

According to IEC 61000-4-6:1996

11.6. Test Result

Product	16/24 Port 10/100/1000 Ethernet Switch		
Test Mode	Mode1: DGS-1024TL		
Date of Test	2003/11/05	Test Site	SR4
Test Condition	CS	Test Range	0.15~80

Frequency Range (MHz)	Voltage Applied (dBuV(V))	Inject Method	Tested Port of EUT	Required Criteria	Performance Criteria Complied To	Result
0.15~80	130 (3V)	CDN	AC IN	A	A	PASS
0.15~80	130 (3V)	Clamp	LAN	A	A	PASS

- Meet criteria A : Operate as intended during and after the test
- Meet criteria B : Operate as intended after the test
- Meet criteria C : Loss/Error of function
- Additional Information
 - EUT stopped operation and could / could not be reset by operator at _____ dBuV(V) at frequency _____MHz.
 - No false alarms or other malfunctions were observed during or after the test. The acceptance criteria were met, and the EUT passed the test.

11.7. Test Photo

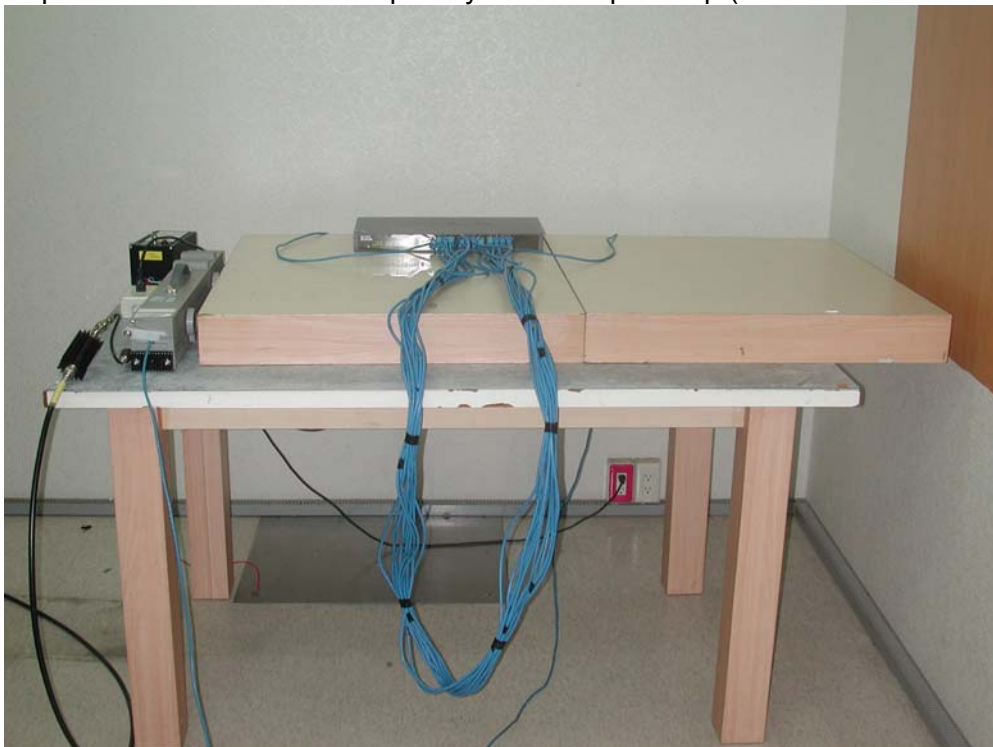
Test Mode : Mode1: DGS-1024TL

Description : Conducted Susceptibility Test Setup



Test Mode : Mode1: DGS-1024TL

Description : Conducted Susceptibility Test Setup-Clamp (LAN Cab



12. Power Frequency Magnetic Field

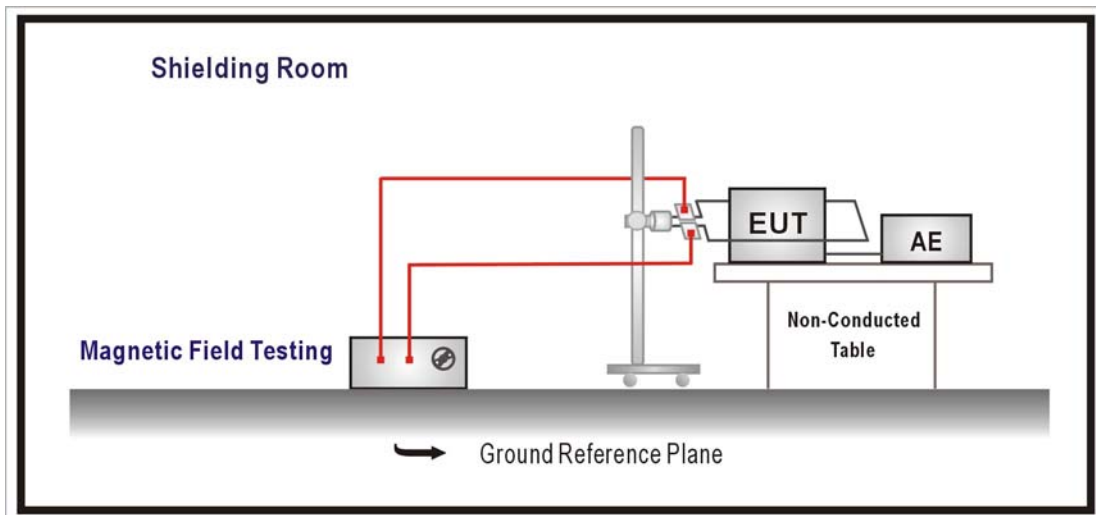
12.1. Test Equipment

The following test equipment are used during the test:

Item	Equipment	Manufacturer	Model No. / Serial No.	Last Cal.
1	Magnetic Field Testing	HAEFELY	MAG100 / 080 938-05	May,2003
2	Triaxial ELF Magnetic Field Meter	F.B.BELL	4090 / 9852	Apr.,2003
3	No.1 Shielded Room			N/A

Note: All equipment upon which need to calibrated are with calibration period of 1 year.

12.2. Test Setup



12.3. Limits

Item	Environmental Phenomena	Units	Test Specification	Performance Criteria
Enclosure Port				
	Power-Frequency	Hz	50	
	Magnetic Field	A/m (r.m.s.)	1	A

12.4. Test Procedure

The EUT and its load are placed on a table which is 0.8 meter above a metal ground plane measured at least 1m*1m min. The test magnetic field shall be placed at central of the induction coil.

The test magnetic Field shall be applied 10minutes by the immersion method to the EUT. And the induction coil shall be rotated by 90° in order to expose the EUT to the test field with different orientation (X, Y, Z Orientations).

12.5. Test Specification

According to IEC 61000-4-8:1993

12.6. Test Result

Product	16/24 Port 10/100/1000 Ethernet Switch		
Test Mode	Mode1: DGS-1024TL		
Date of Test	2003/11/05	Test Site	SR1
Test Condition	PMag	Test Range	

Polarization	Frequency (Hz)	Magnetic Strength (A/m)	Required Performance Criteria	Performance Criteria Complied To	Test Result
X Orientation	50	1	A	A	PASS
Y Orientation	50	1	A	A	PASS
Z Orientation	50	1	A	A	PASS

- Meet criteria A : Operate as intended during and after the test
- Meet criteria B : Operate as intended after the test
- Meet criteria C : Loss/Error of function
- Additional Information
 - EUT stopped operation and could / could not be reset by operator at _____ A/m.
 - No false alarms or other malfunctions were observed during or after the test. The acceptance criteria were met, and the EUT passed the test.

12.7. Test Photo

Test Mode : Mode1: DGS-1024TL

Description : Power Frequency Magnetic Field Test Setup



13. Voltage Dips and Interruption

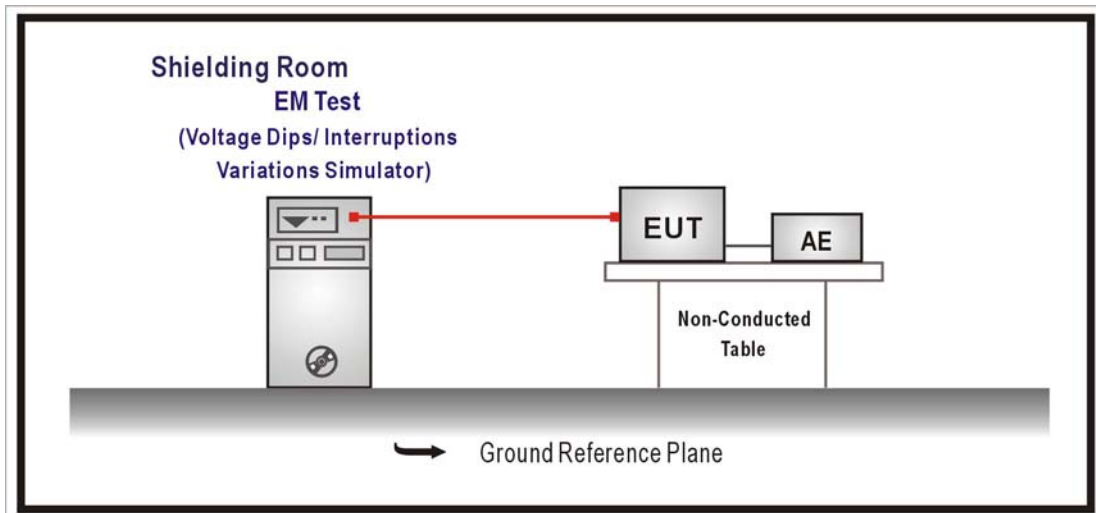
13.1. Test Equipment

The following test equipment are used during the test:

Item	Equipment	Manufacturer	Model No. / Serial No.	Last Cal.
1	EM TEST	EM	UCS 500-M / UCS500M4	Jan.,2003
2	No.1 Shielded Room			N/A

Note: All equipment upon which need to calibrated are with calibration period of 1 year.

13.2. Test Setup



13.3. Limits

Item	Environmental Phenomena	Units	Test Specification	Performance Criteria
Input AC Power Ports				
	Voltage Dips	% Reduction	30	C
		Period	25	
		% Reduction	>95	B
		Period	0.5	
	Voltage Interruptions	% Reduction	> 95	C
		Period	250	

13.4. Test Procedure

The EUT and its load are placed on a table which is 0.8 meter above a metal ground plane measured 1m*1m min. And 0.65mm thick min. And projected beyond the EUT by at least 0.1m on all sides. The power cord shall be used the shortest power cord as specified by the manufacturer.

For Voltage Dips/ Interruptions test:

The selection of test voltage is based on the rated power range. If the operation range is large than 20% of lower power range, both end of specified voltage shall be tested. Otherwise, the typical voltage specification is selected as test voltage.

The EUT is connected to the power mains through a coupling device that directly couples to the Voltage Dips and Interruption Generator.

The EUT shall be tested for 30% voltage dip of supplied voltage and duration 25 Periods,

for 95% voltage dip of supplied voltage and duration 0.5 Periods with a sequence of three voltage dips with intervals of 10 seconds, and for 95% voltage interruption of supplied voltage and duration 250 Periods with a sequence of three voltage interruptions with intervals of 10 seconds.

Voltage phase shifting are shall occur at 0⁰, 45⁰, 90⁰, 135⁰, 180⁰, 225⁰, 270⁰, 315⁰ of the voltage.

13.5. Test Specification

According to IEC 61000-4-11:1994

13.6. Test Result

Product	16/24 Port 10/100/1000 Ethernet Switch		
Test Mode	Mode1: DGS-1024TL		
Date of Test	2003/11/05	Test Site	SR1
Test Condition	Dip	Test Range	

Voltage Dips and Interruption Reduction(%)	Angle	Test Duration (Periods)	Required Performance Criteria	Performance Criteria Complied To	Test Result
30	0	25	C	A	PASS
30	45	25	C	A	PASS
30	90	25	C	A	PASS
30	135	25	C	A	PASS
30	180	25	C	A	PASS
30	225	25	C	A	PASS
30	270	25	C	A	PASS
30	315	25	C	A	PASS
>95	0	0.5	B	A	PASS
>95	45	0.5	B	A	PASS
>95	90	0.5	B	A	PASS
>95	135	0.5	B	A	PASS
>95	180	0.5	B	A	PASS
>95	225	0.5	B	A	PASS
>95	270	0.5	B	A	PASS
>95	315	0.5	B	A	PASS
>95	0	250	C	B	PASS
>95	45	250	C	B	PASS
>95	90	250	C	B	PASS
>95	135	250	C	B	PASS
>95	180	250	C	B	PASS
>95	225	250	C	B	PASS
>95	270	250	C	B	PASS
>95	315	250	C	B	PASS

- Meet criteria A : Operate as intended during and after the test
- Meet criteria B : Operate as intended after the test
- Meet criteria C : Loss/Error of function
- Additional Information
 - The nominal voltage of EUT is 230V.
 - EUT stopped operation and could / could not be reset by operator at _____.
 - No false alarms or other malfunctions were observed during or after the test. The acceptance criteria were met, and the EUT passed the test.

13.7. Test Photo

Test Mode : Mode1: DGS-1024TL
Description : Voltage Dips Test Setup



Attachement

➤ **EUT Photograph**

DGS-1016TL:

(1) EUT Photo



(2) EUT Photo



DGS-1024TL:

(3) EUT Photo



(4) EUT Photo



Reference : Laboratory of License

**Nemko Laboratory
Authorisation
Aut. No.: ELA 165**

EMC Laboratory: **QuieTek Corporation
No. 75-2, Wang-Yeh Valley,
Yung-Hsing, Chiung-Lin, Hsin-Chu,
Hsin-Chu County, Taiwan R.O.C.**

Scope of
Authorization: **All standards for EMC and radio transmission that are listed
on the accompanying page.**

Nemko has assessed the quality assurance system, the testing facilities, qualifications and testing practices of the relevant parts of the organization. The quality assurance system of the Laboratory has been validated against ISO/IEC 17025 or equivalent. The laboratory also fulfils the conditions described in Nemko Document NLA-10. During the visit by the Nemko representative it was found that the Laboratory is capable of performing tests within the Scope of the Authorisation.

Accordingly, Nemko will normally accept test results from the laboratory on a partial or complete basis for certification of the products.

In order to maintain the Authorisation, the information given in the pertinent NLA-10 must be carefully followed. Nemko is to be promptly notified about any changes in the situation at the Laboratory, which may affect the basis for this Authorisation. The Authorisation may be withdrawn at any time if the conditions are no longer considered to be fulfilled.

The Authorisation is valid through 31. December 2005.

Oslo, 2003-10-08

For Nemko AS:



Jon Fredrik Mo, Nemko ELA Co-ordinator

Scope of authorisation

Generic and product-family standards

<p><i>UPS – Uninterruptable power supplies</i> EN 50091-2:1995 (doc=exp)</p>	<p><i>ISM equipment, emission</i> EN 55011:1998 + A1 :99 (doc=exp) + A2:2002 (doc=1.10.05) CISPR 11:97 + A1 :99 + A2 :02</p>	<p><i>Broadcast receivers – emission</i> EN 55013 :2001 (doc=1.9.04) CISPR 13 :2001 (mod) EN 55013:1990 + A12:1994 + A13:1996 + A14 :1999 (doc=exp) CISPR 13:1975 + A1:1983 mod.</p>
<p><i>Household appliances – emission</i> EN 55014-1 :2000 (doc=1.8.03) + A1 :2001 (doc=1.10.04) + A2 :2002 (doc=1.10.05) CISPR 14-1 :2000 + A1 :2001 + A2 :2002 EN 55014-1:1993 + A1:1997 + A2 :1999 (doc=exp) CISPR 14:1993 + A1:1996 + A2 :1998</p>	<p><i>Household appliances - immunity</i> EN 55014-2:1997 (doc=exp) + A1:2001 (doc=1.12.04) CISPR 14-2:1997 + A1 :2001</p>	<p><i>Electrical lighting – emission</i> EN 55015 :2000 (doc=1.8.03) + A1 :2001 (doc=1.12.04) + A2 :2002 (doc=1.10.05) CISPR 15 :2000 + A1 :2000 + A2 :2002 EN 55015:1996 + A1:97 + A2 :99 (doc=exp) CISPR 15:96 + A1:97 + A2 :98</p>
<p><i>ITE - emission</i> EN 55022:1998 + A1:2000 (doc=1.8.03) + A2:2002 (doc=not harmonised yet) CISPR 22:1997 + A1:2000 + A2:2002 EN 55022:1994 + A1:1995 + A2:1997 (doc=exp) CISPR 22:1993 + A1:1995 + A2:1996</p>	<p><i>ITE – Immunity</i> EN 55024:1998 (doc=exp) + A1 :2001 (doc=1.10.04) + A2 :2002 (doc=not harmonised yet) CISPR 24:1997 + A1 :2001 + A2 :2002</p>	<p><i>Harmonics</i> EN 61000-3-2 :2000 (doc=1.1.04) IEC 61000-3-2 :2000 (mod) + A1 :2001 EN 61000-3-2:1995 + A1:1998 + A2:1998 (doc=exp) + A14 :2000 (doc=1.1.04) IEC 61000-3-2:1995 + A1:1997 + A2:1998</p>
<p><i>Flicker</i> EN 61000-3-3 :1995 (doc=exp) + A1 :2001 (doc=1.5.04) IEC 61000-3-3 :1994 + A1 :2001</p>	<p><i>Generic Immunity - light</i> EN 61000-6-1:2001 (doc=1.7.04) IEC 61000-6-1:1997 (mod) EN 50082-1 :1997 (doc=exp)</p>	<p><i>Generic immunity – Industrial</i> EN 61000-6-2:2001 (doc=1.7.04) IEC 61000-6-2:1999 (mod) EN 61000-6-2:1999 (doc=exp) IEC 61000-6-2:1999</p>
<p><i>Generic emission – light</i> EN 61000-6-3 :2001 (doc=1.7.04) IEC 61000-6-3 :1996 (mod) EN 50081-1:1992 (doc=exp)</p>	<p><i>Generic emission - industry</i> EN 61000-6-4 :2001 (doc=1.7.04) IEC 61000-6-4:1997 (mod) EN 50081-2:1993 (doc=exp)</p>	<p><i>Laboratory equipment</i> EN 61326 :1997 + A1 :98 (doc=exp) + A2 :01 (doc=1.4.04) IEC 61326 :1997 + A1 :98 + A2 :00</p>
<p><i>Electrical lighting – Immunity</i> EN 61547 :1995 (doc=exp) + A1 :2000 (doc=1.11.03) IEC 61547 :1995 + A1 :2000</p>	<p><i>Professional AV – emission</i> EN 55103-1:1996 (doc=exp)</p>	<p><i>Professional AV - Immunity</i> EN 55103-2:1996 (doc=exp)</p>
<p><i>Alarm systems – Immunity</i> EN 50130-4:1995 + A1:98 +A2:03</p>		

EMC		
Broadcast receives - immunity EN 55020:2002 (doc=1.4.05) CISPR 20:2002 A1:2002 to CISPR 20:2002 (not harm) EN 55020:1994 + A11:96 + A12 :99 + A13 :99 + A14 :99 (doc=exp)		

EMC		
Generic Art. 3.1.b EN 300 339 :1998 (doc=exp)	SRD 25 – 1000 MHz, Art. 3.2 EN 300 220-1 V1.2.1 - V1.3.1 EN 300 220-2 V1.2.1 - V 1.3.1 EN 300 220-3 V1.1.1	Spread spectrum 2,4 GHz, Art 3.2 EN 300 328-2 V.1.2.1 EN 300 328-2 V.1.1.1 EN 300 328-1V.1.3.1 EN 300 328-1 V1.2.2 EN 300 328 V.1.4.1 ETS 300 328:1996 + A1:97
EN 300 440-1 V1.3.1 EN 300 440-2 V1.1.1	ETS 300 683 :1997 EN 301 489-01 V1.2.1 - V1.4.1 EN 301 489-03 V1.2.1 – V1.4.1 EN 301 489-17 V1.1.1 – V 1.2.1	ETS 300 683 :1997 EN 301 489-03 :2000 EN 301 489-17 :2000
EN 301 489-07 :2000 (doc=exp) EN 301 489-01:2000 V.1.2.1 (doc=exp) EN 301 489-01 V.1.3.1 (doc=exp)	EN 301 489-09 V.1.1.1 (doc=exp) EN 301 489-01 V.1.2.1 (doc=exp) EN 301 489-01 V.1.3.1 (doc=exp) EN 301 489.-09 V.1.2.1 (dos=01.08.05) EN 301 489-01:2000 V.1.2.1 (doc=exp) EN 301 489-01 V.1.3.1 (doc=exp)	EN 301 489-19 V.1.1.1 (doc=exp) EN 301 489-01:2000 V.1.2.1 (doc=exp) EN 301 489-01 V.1.3.1 (doc=30.06.03)

EMC		
Collateral EMC standard for Medical Devices EN 60601-1-2:1993 (doc=exp) IEC 60601-1-2:1993 EN 60601-1-2:2001 (doc=1.11.2004) IEC 60601-1-2:2001		

EN 61000-4-2:1995 + A1:98 + A2:01 IEC 61000-4-2:1995 + A1:98 + A2:00 (EN 60801-1:1993 IEC 801.2:1991 IEC 801.2:1984)	EN 61000-4-3:2002 + A1:02 IEC 61000-4-3:2002 + A1:02 EN 61000-4-3:1996 + A1:98 + A 2 :01 IEC 61000-4-3:1995 + A1:98 + A2 :00 (IEC 801.3:1984 ENV 50140:1993 + ENV 50204:1995)	EN 61000-4-4:1995+ A1:01 + A 2 :01 IEC 61000-4-4:1995+ A1:00 + A 2 :01 (IEC 801.4:1990)
EN 61000-4-5:1995 + A1:01 IEC 61000-4-5:1995 + A1:00 (ENV 50142:1994)	EN 61000-4-6:1996 + A1:01 IEC 61000-4-6:1996 + A1:00 (ENV 50141:1993)	EN 61000-4-8:1993 + A1 :01 IEC 61000-4-8:1993 + A1 :00
EN 61000-4-11:1994 + A1 :01 IEC 61000-4-11:1994 + A1 :00	CISPR 16-1 :1999 + A1 :02 CISPR 16-2 :1996 + A1:99+A2:02 CISPR 16-3 :2000 + A1 :2002 CISPR 16-4 :2002	EN 55020:2002 CISPR 20:2002 EN 55020:1994 + A11:96 + A12 :99 + A13 :99 + A14 :99
ANSI C63.4		