



Firmware Version: 1.10.005
Boot Code Version: 1.00.011
MIB Version: 1.00.008
D-View Module Version: 1.0.0.7
Published: Feb. 23, 2012

These release notes include important information about D-Link switch firmware revisions. Please verify that these release notes are correct for your switch:

- If you are installing a new switch, please check the hardware version on the device label; make sure that your switch meets the system requirement of this firmware version. Please refer to [Revision History and System Requirement](#) for detailed firmware and hardware matrix.
- If the switch is powered on, you can check the hardware version by typing "show switch" command via Telnet or by checking the device information page on the web graphic user interface.
- If you plan to upgrade to the new firmware release, please refer to the [Upgrade Instructions](#) for the correct firmware upgrade procedure.

For more detailed information regarding our switch products, please refer to [Related Documentation](#).

You can also download the switch firmware, D-View modules and technical documentation from <http://tsd.dlink.com.tw>.

Content:

Upgrade Instructions:	2
Upgrade using CLI (via Telnet).....	2
Upgrade using Web-UI.....	3
Upgrade using SmartConsole Utility.....	5
New Features:.....	8
Changes of MIB & D-View Module:	8
Changes of Command Line Interface:	8
Problem Fixed:	9
Known Issues:	9
Related Documentation:	9

Revision History and System Requirement:

Firmware Version	Date	Model	Hardware Version
Runtime: v1.10.005 Boot: 1.00.011	23-Feb.-12	DGS-1500-28P	A1
Runtime: v1.00.018 Boot: 1.00.010	08-Nov.-11	DGS-1500-28P	A1

Upgrade Instructions:

D-Link Smart Switches support firmware upgrade via TFTP server. You can download the firmware from D-Link web site <http://tsd.dlink.com.tw>, and copy the downloaded firmware to the TFTP server folder. Please make sure that the TFTP server is accessible from the switch via networks.

Upgrade using CLI (via Telnet)

1. Make sure the network connection between the switch and PC is active.
2. Use software that supports telnet, for example, HyperTerminal or Telnet command in Microsoft Windows, to connect to the switch. If you are using Telnet command, type the command followed by the switch IP address, eg. *telnet 10.90.90.90*.
3. The logon prompt will appear.

The switch will prompt the user to enter his/her username and password. It should be noted that upon the initial connection, both the default user name and password are **admin**.

To upgrade the switch firmware, execute the following command:

Command	Function
download{firmware_fromTFTP tftp://ip-address/filename cfg_fromTFTP tftp://ip-address/filename}	Download firmware file from the TFTP server to the switch.

When completing firmware upgrade, the following messages will pop up.

```
Device will reboot after firmware upgraded successfully
Image upgraded successfully
```

4. Execute the following command to check the firmware version and switch's information.

Command	Function
show switch	Display the information of current firmware and boot version.

Example:

1. **DGS-1500-28P:**
 Command: download firmware_fromTFTP tftp://10.90.90.91 DGS-1500-28P A1_1_00_011.hex
 Device will reboot after firmware upgraded successfully
 Image upgraded successfully
2. **DGS-1500-28P:**
 Command: show switch
 DGS-1500-28P> show switch
 System name :

```

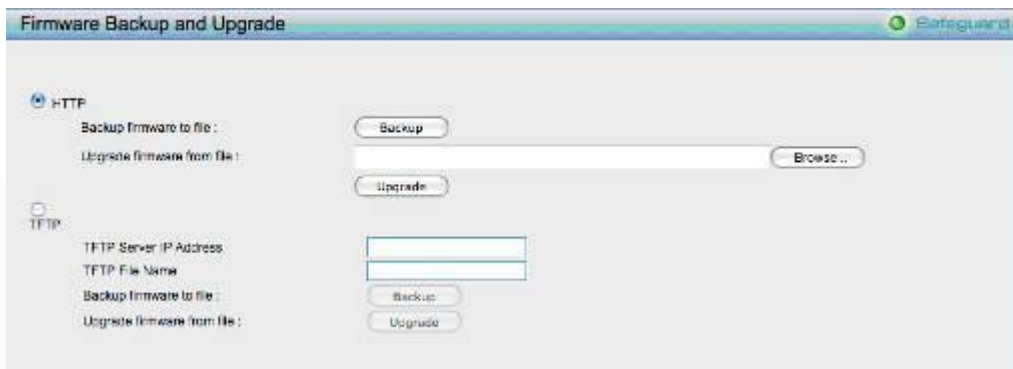
System Contact           :
System Location          :
System up time           : 0 days, 1 hrs, 8 min, 36 secs
System Time              : 04/07/2011 01:58:42
System hardware version  : A1
System firmware version  : 1.00.013
System boot version      : 1.00.009
System Protocol version  : 2.001.004
System serial number     : 00SQA15002088
MAC Address              : 00-15-00-20-08-88
    
```

Upgrade using Web-UI

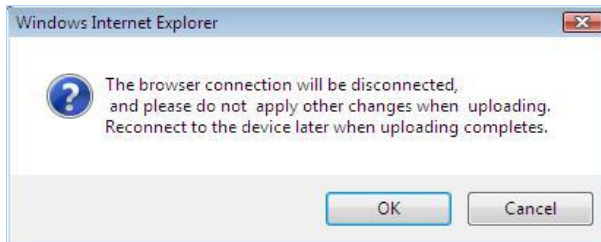
1. Connect a workstation installed with java SE runtime environment to any switch port of the device.
2. Open the web browser from the workstation and enter the IP address of the switch. The switch's default IP address is 10.90.90.90.
3. Enter administrator's password when prompted. The password is **admin** by default.
4. To update switch's firmware or configuration file, select **Tools > Firmware Backup & Upgrade** from the banner.



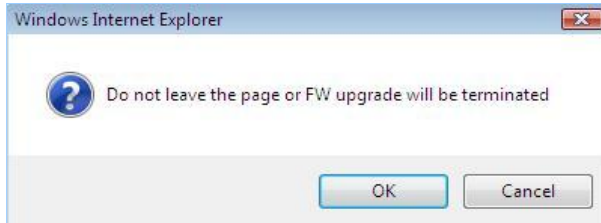
5. Two methods can be selected : **HTTP** or **TFTP**



6. Select **HTTP** to upgrade the firmware to or from your local drive of PC.
 - a. Click **Browse** to browse your inventories for a saved firmware file
 - b. Click **Upgrade** after selecting the firmware file you want to restore
 - c. Click **OK** to continue with firmware upgrade



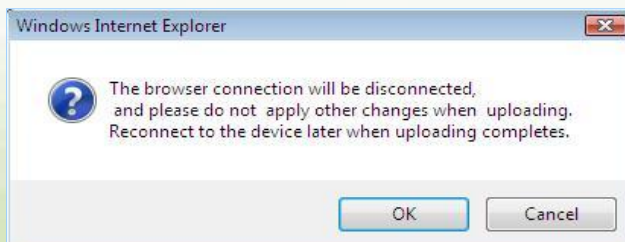
d. Click **OK** to continue with firmware upgrade



e. Wait until the "Firmware Upgrade Successful" message pops up and login again after device boots up.



7. Select **TFTP** to upgrade the firmware to or from a remote TFTP server.
 - a. Enter the name of the firmware file located on the TFTP server
 - b. Click **Upgrade** after selecting the firmware file you want to restore
 - c. Click **OK** to continue with firmware upgrade

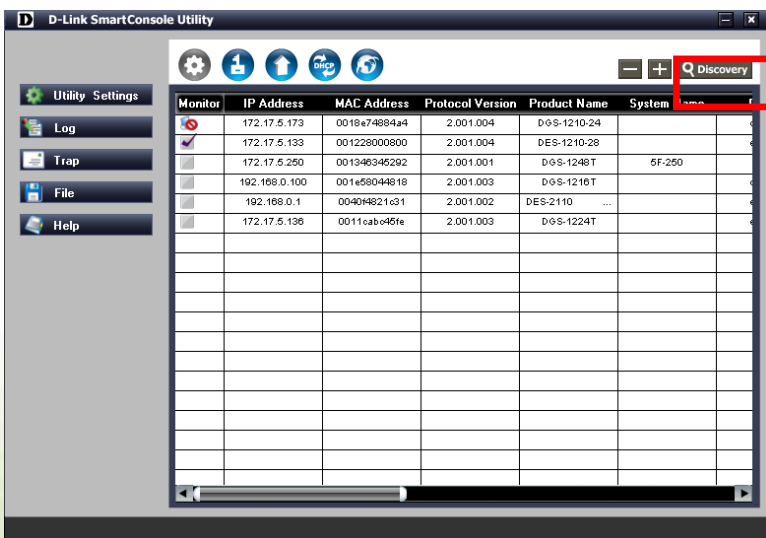
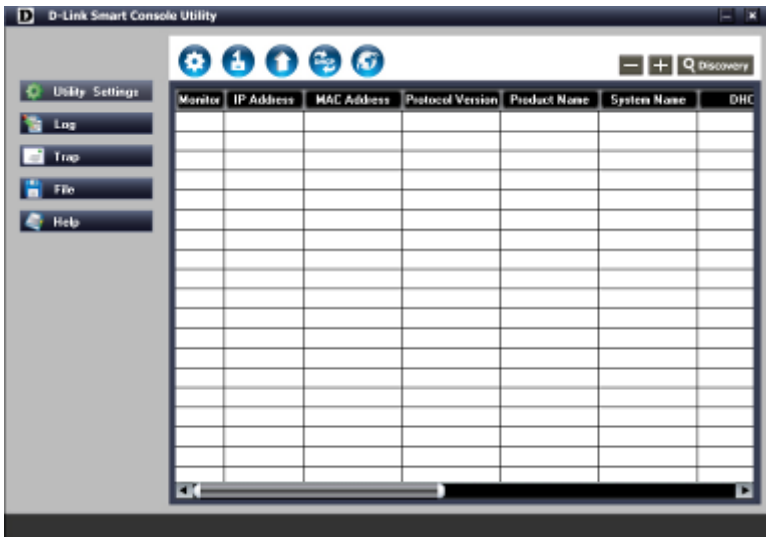


d. Wait until the firmware upgrade ends and login again after device boots up.

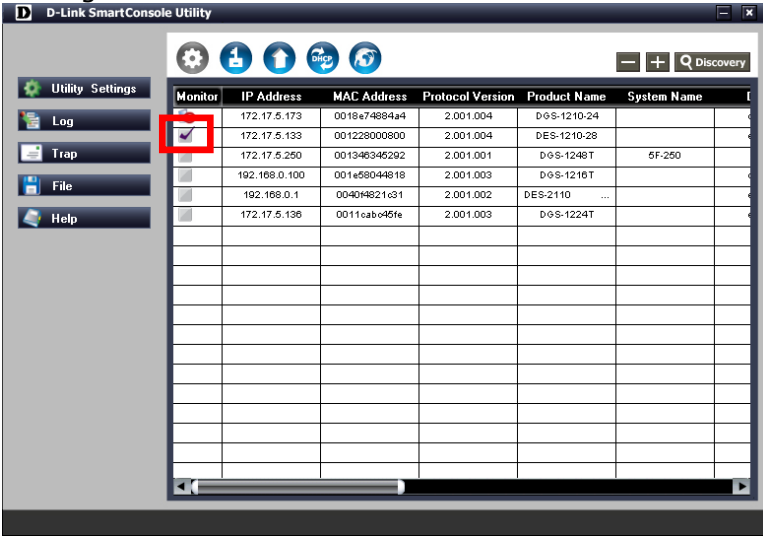


Upgrade using SmartConsole Utility

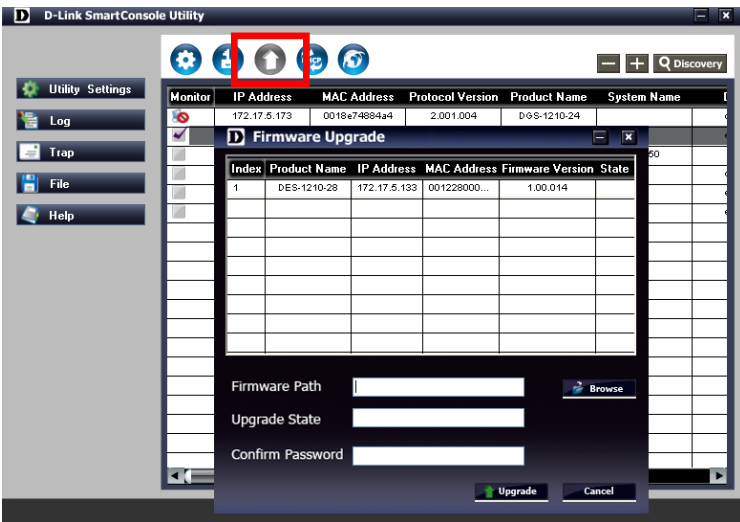
1. Connect a workstation installed with java SE runtime environment to any switch port of the device
2. Execute SmartConsole Utility



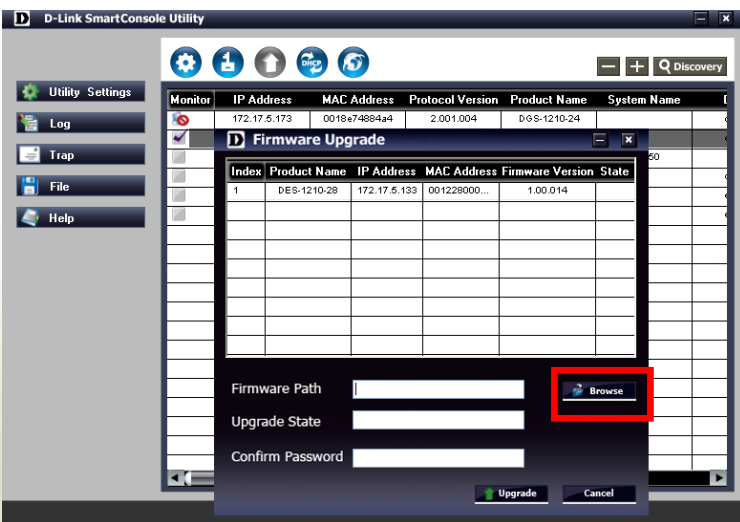
3. Single click the icon of Monitor column to choose the target switch

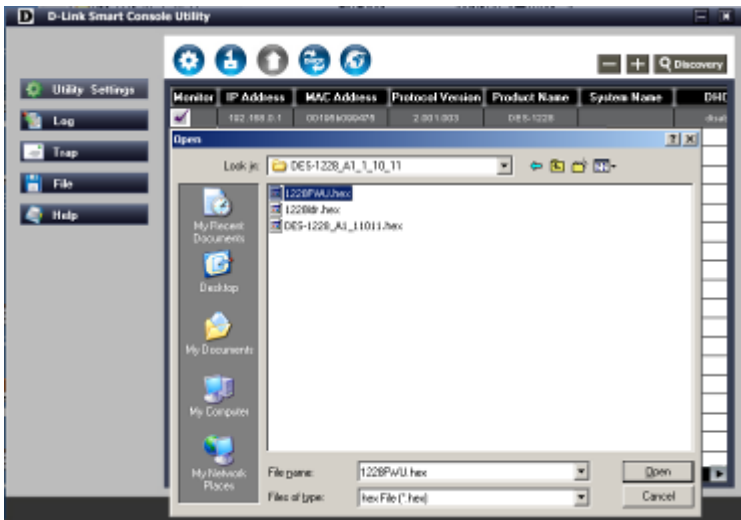


4. Click Firmware Upgrade button

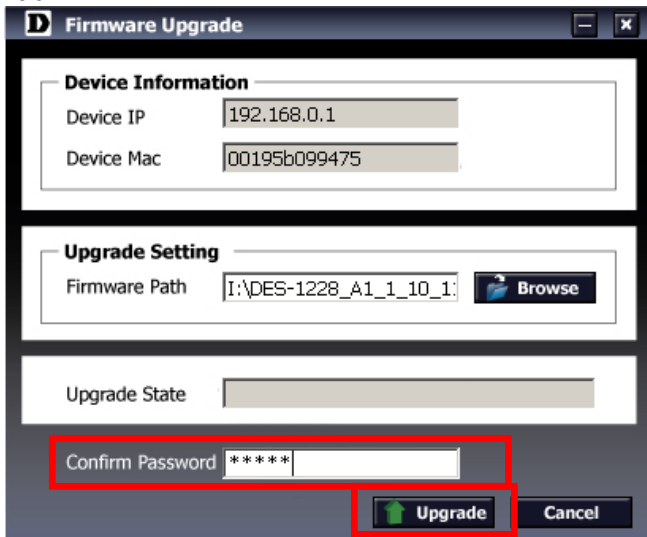


5. Click Browse button and select the firmware file (Model name_HW ver._FW ver. .hex) on your local hard drive.

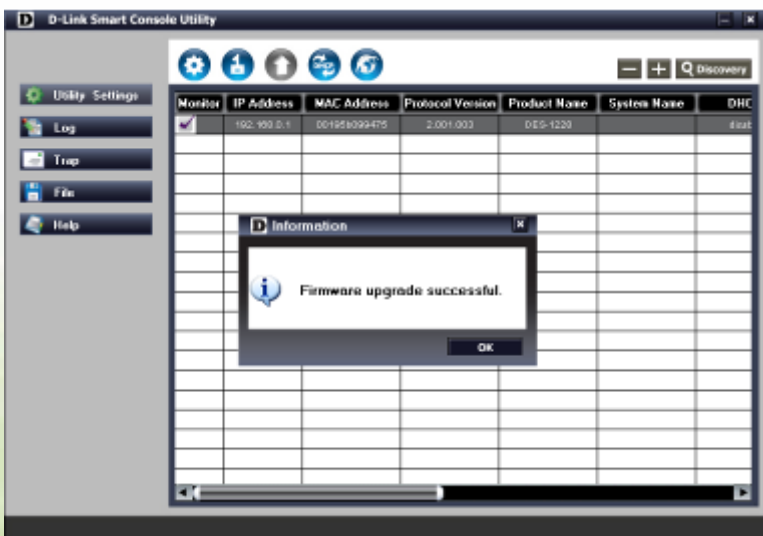




6. Enter password and click "Upgrade" button to start firmware upgrade. The default password is "admin".



7. Once the message popped up, click "OK" button to complete the firmware upgrade



New Features:

Firmware Version	New Features
V1.10.005	<ol style="list-style-type: none"> Static ARP settings: <ol style="list-style-type: none"> Add "delete" button on ARP table for deleting selected ARP entries. Add descriptions for ARP entries in ARP table. Add new pre-defined MAC range (28107B 000000 ~ 28107B 3FFFFFF) of D-Link IP camera for the ASV function.
V1.00.018	First Release

Changes of MIB & D-View Module:

The new features of MIB file are also included in the corresponding D-View module. Please download the D-View module from <http://tsd.dlink.com.tw>. For detailed changes of MIB content, please refer to the modification history in each MIB file.

Firmware Version	MIB File	New Features
V1.10.005	DGS-1500-28P_A1_1_00_008.mib	NA
V1.10.018	DGS-1500-28P_A1_1_00_010.mib	First Release

Firmware Version	D-View Module File	New Features
V1.10.005	DV_DGS-1500-28P_V1.0.0.7_FW_V1.00.013.exe	NA
V1.00.018	DV_DGS-1500-28P_V1.0.0.7_FW_V1.00.018.exe	First Release

Changes of Command Line Interface:

The section below only shows command line changes that may bring backward compatibility issues with configuration settings for previous version of firmware. Any new feature commands that do not have backward compatibility issues are not included in the below section.

Firmware Version	Changes
V1.10.005	NA
V1.00.018	First Release

Problem Fixed:

Firmware Version	Problems Fixed
V1.10.005	<ol style="list-style-type: none"> Fixed the problem that the Static Route cannot work when Trunk is enabled. (DEUR20111111000005) Fixed the problem that Static Route cannot ping others VLAN interface IP. Static Route behavior changes to the dynamic learning of ARP packets for routing, so there is unnecessary to manually add host in Static ARP table. (DEUR20120207000002) Fixed the problem that the host which is in the same VLAN with Gateway cannot connect to Internet. (DEUR20111025000008) Fixed the interoperability issue with DES-1005P. (DEUR20120127000001) Prohibited the unauthorized users to modify or edit the switch (E.g. Configure download/restore). (DEUR20120111000005) Fixed the problem that there is no upper logo shown on the banner of any Web languages except for English (DEUR20120312000004)
V1.00.018	First Release

Known Issues:

Firmware Version	Issues	Workaround
V1.10.015	None	None
V1.00.018	<ol style="list-style-type: none"> The settings as shown below cannot be chosen on Chrome and Safari Browser. <div data-bbox="343 1142 1220 1377" data-label="Image"> <p>The screenshot shows the D-Link web management interface. At the top, there is a navigation bar with 'Save', 'Tools', 'Wizard', and 'Help' menus. The 'Help' menu is open, showing 'D-Link Support Site' and 'User Guide' as options. Below the navigation bar, there is a sidebar with 'DGS-1210-52', 'System', and 'VLAN' options. The main content area shows 'Device Information'.</p> </div> DUT IP will be back to default IP address 10.90.90.90 under below conditions: <ul style="list-style-type: none"> - All ports link status changed from link down to link up. - After DHCP lease passed. 	None

Related Documentation:

- DGS-1500-28P Series User Manual
- DGS-1500-28P Series Getting Started Guide