

How to configure two DG-102SP to perform peer-to-peer dialing (without SIP server)?

Author: Steven Sia

Doc version: 1.0

Date: 28 June 2003

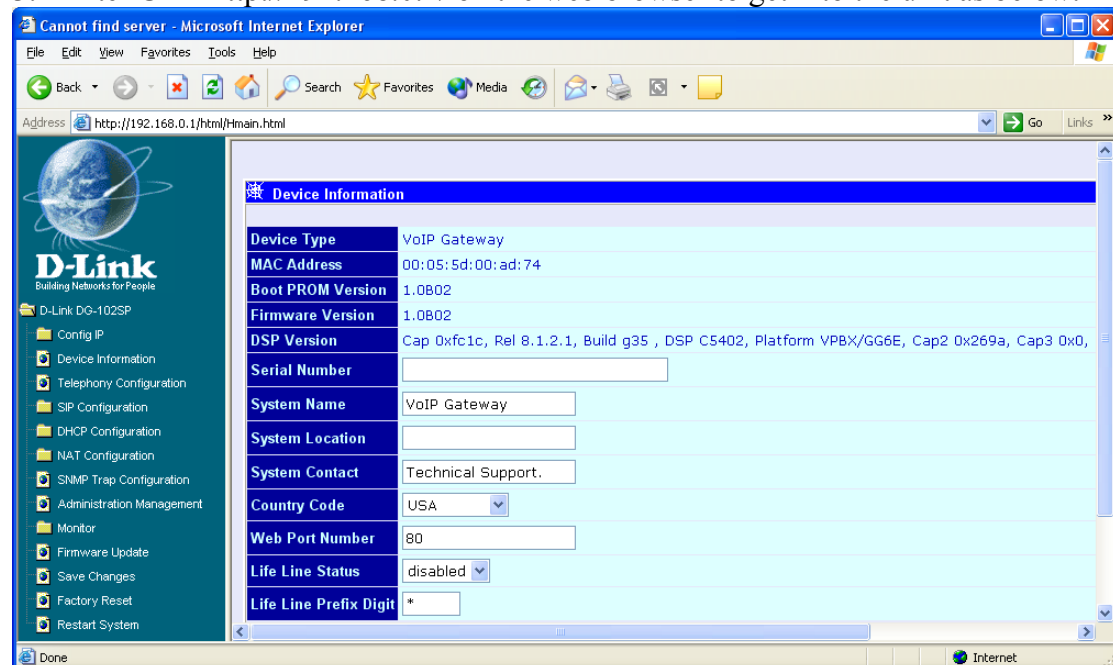
Exmple here uses:

DG-102SP#1 WAN1 = 10.1.1.1, Phone number = 1002@10.1.1.1

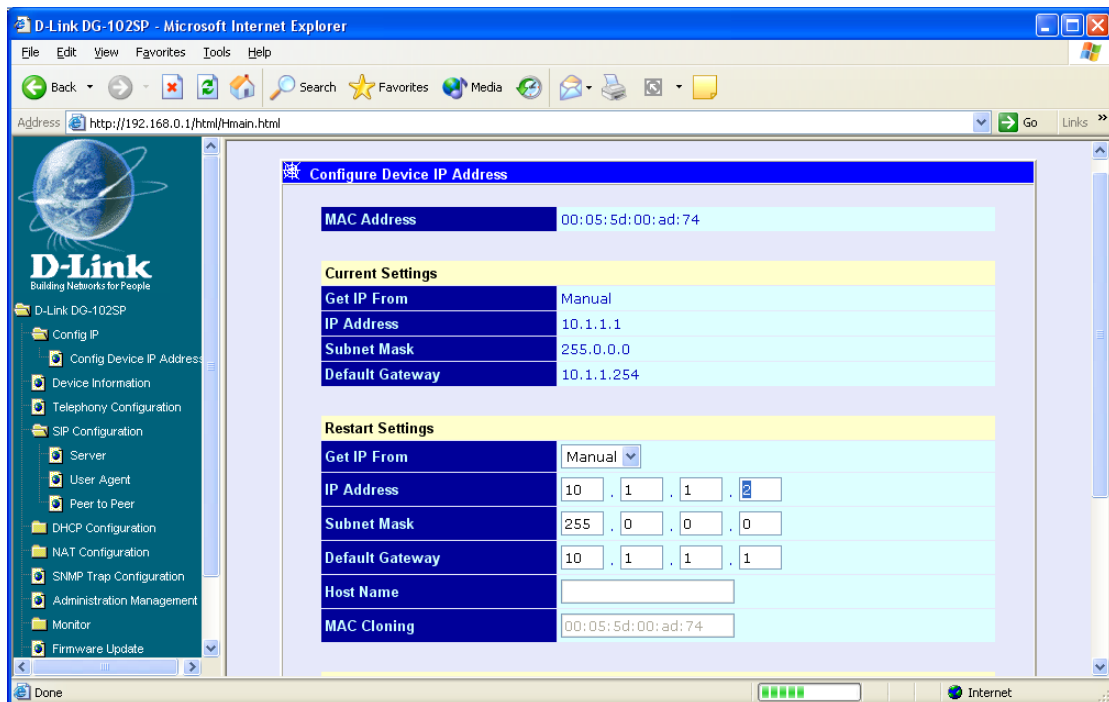
DG-102SP#2 WAN2 = 10.1.1.2, Phone number = 1003@10.1.1.2

Set up DG-102SP#2 now

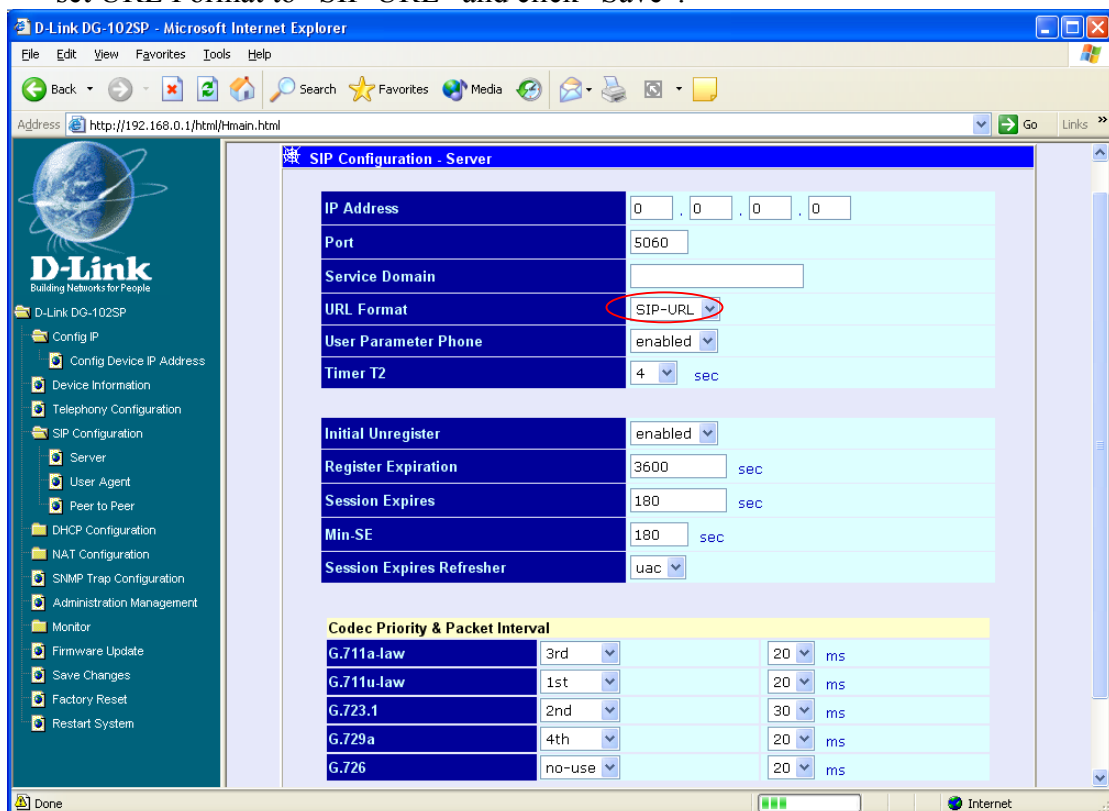
1. Connect the PC to the LAN port of DG-102SP#2.
2. Set PC's adapter to "Obtain an IP address automatically" (restart if asked to), it will obtains a 192.168.0.137 (example) with gateway 192.168.0.1.
3. Enter URL <http://192.168.0.1/> on the web browser to get into the unit as below:



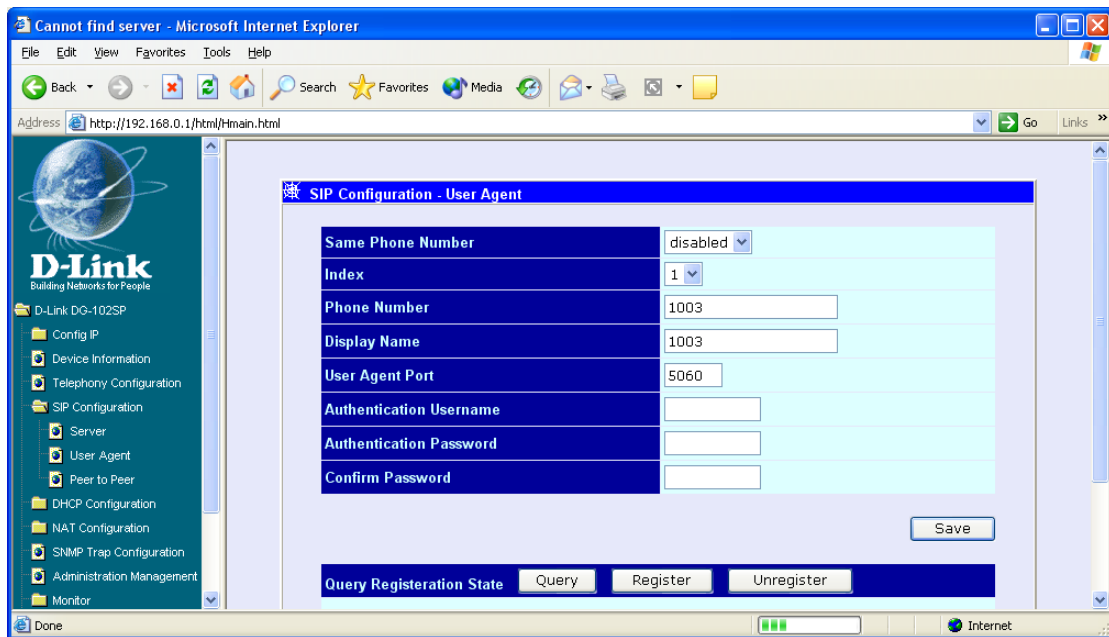
4. Under "Config IP",
set up the WAN (Manual) IP Address to be 10.1.1.2 in this example.
Set up Default Gateway = 10.1.1.1 or whatever the local gateway is (*This is IMPORTANT. Double check with local network administrator if unsure*).
Click on "Save" button at the bottom.



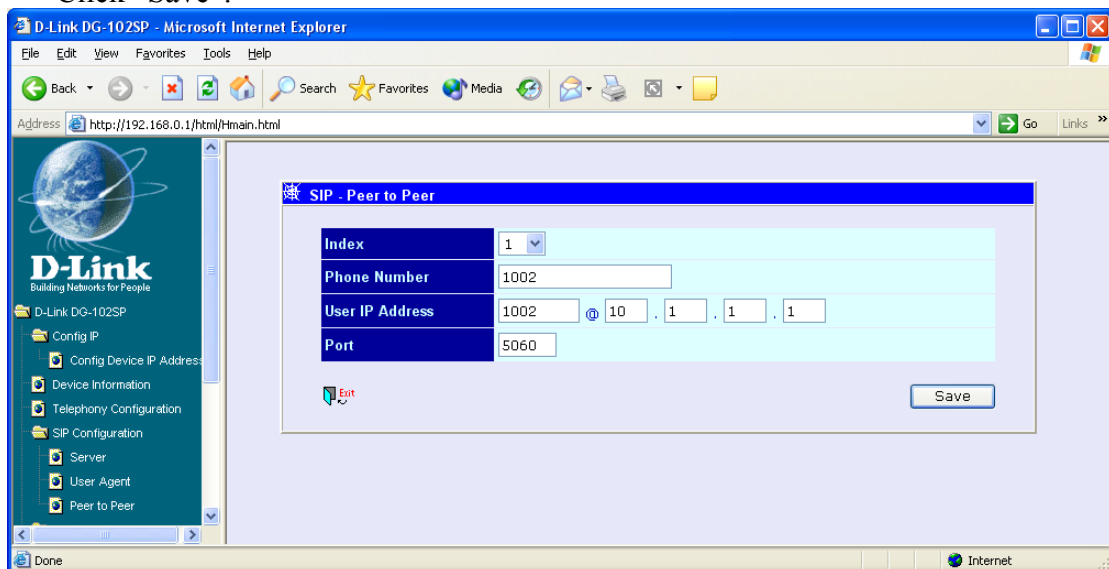
5. Under “SIP Configuration” > “Server”, set URL Format to “SIP-URL” and click “Save”.



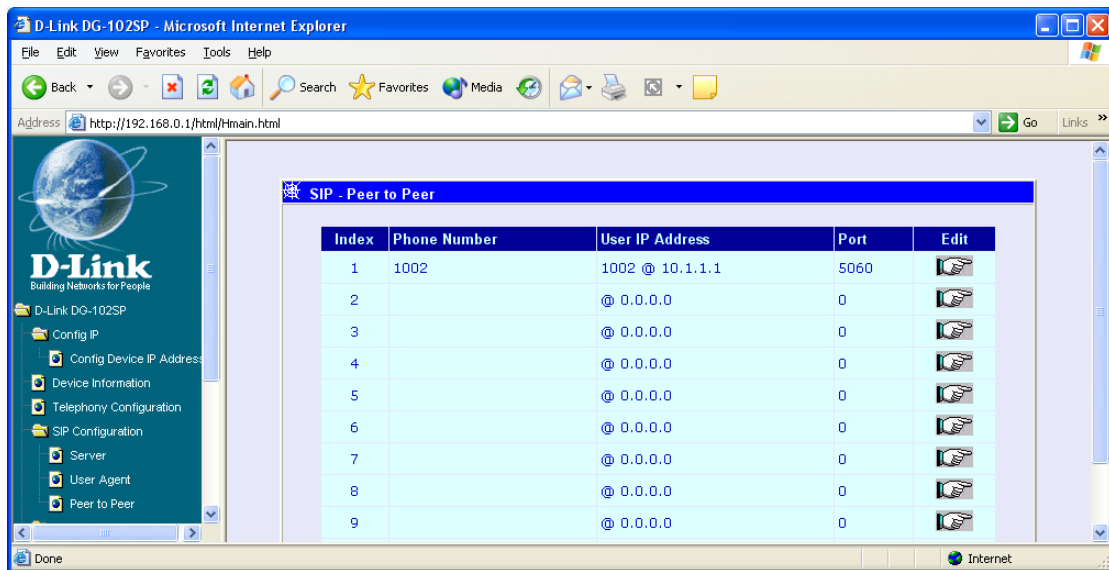
6. Under “SIP Configuration” > “User Agent”, set up “1003” and “5060” as DG-102SP#2 Phone Number and User Agent Port. Click “Save”.



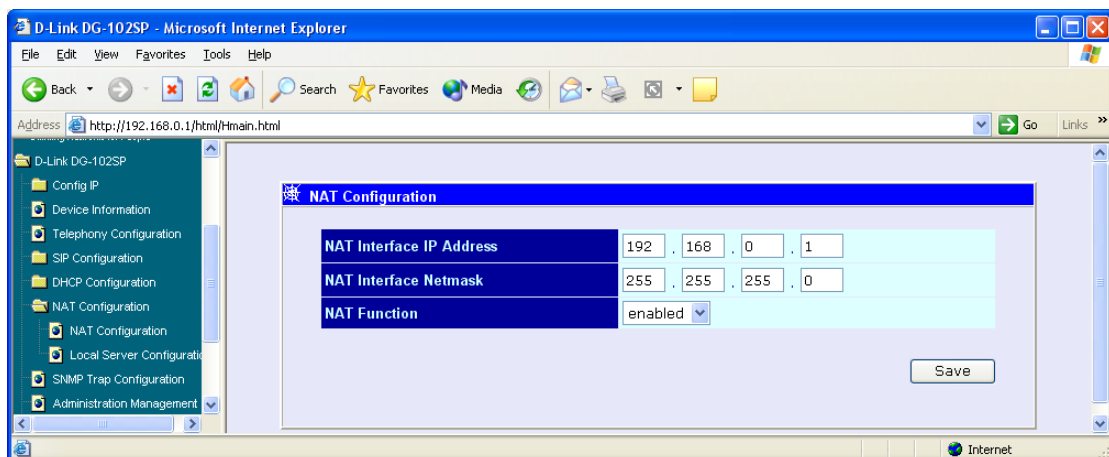
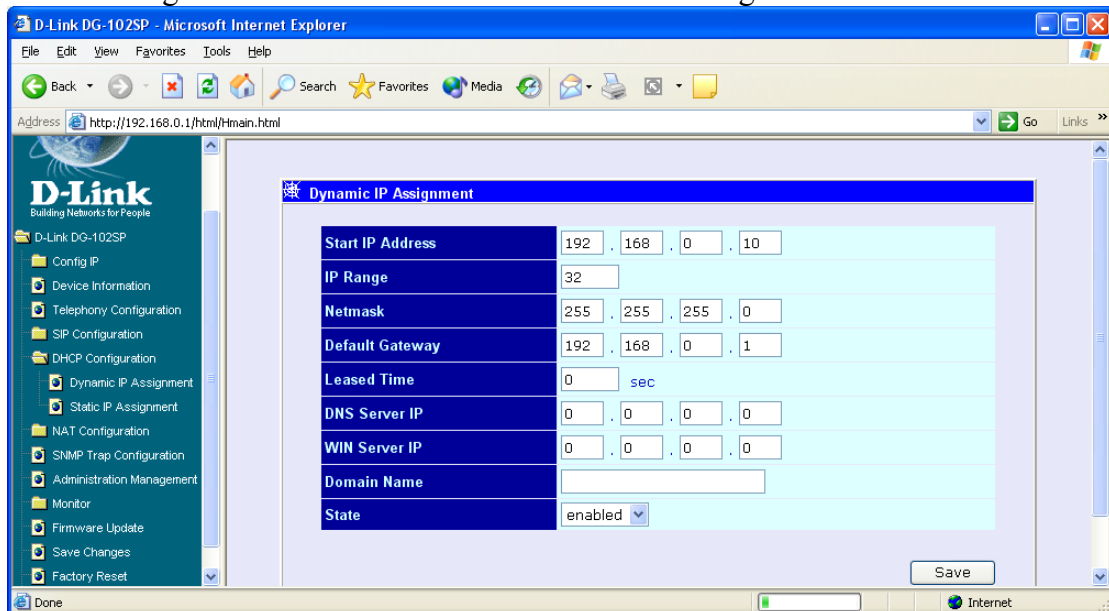
7. Under “SIP Configuration” > “Peer to Peer”, click on “Edit” which will bring up the following page. Enter all the peer-to-peer phone details. Click “Save”.



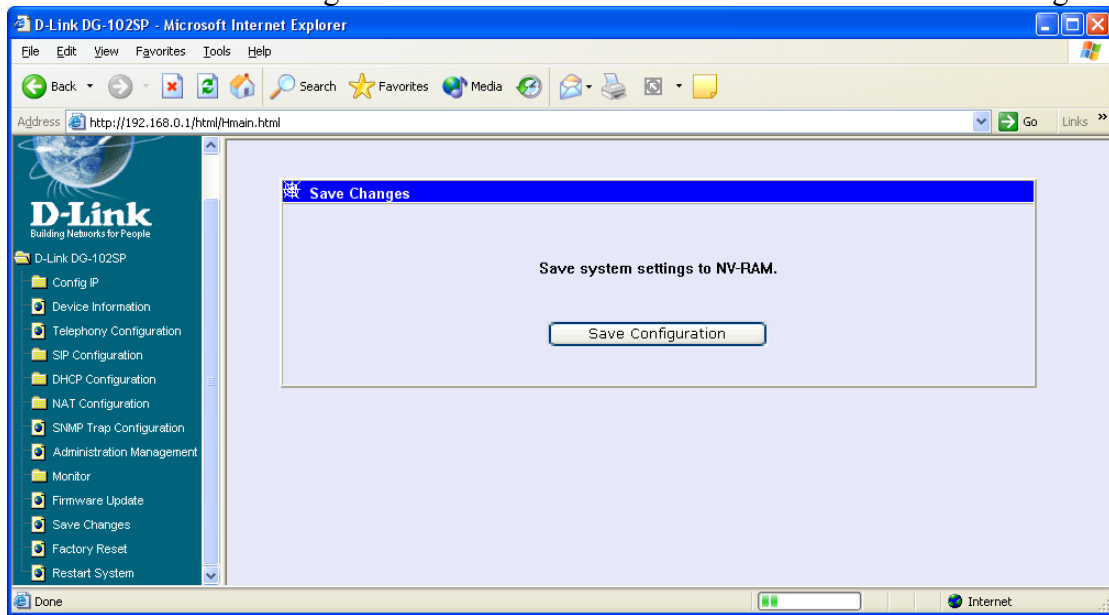
8. After save, you will see the list as below.



9. Checking the LAN NAT and DHCP IP address settings:



10. When all done, go to “Save Changes”,
click on “Save Configuration” below and the unit will reboot itself after saving.



11. Now, using the console interface (9600,n,8,1),
enter the following commands to set the peer to peer mode to 1 (enabled), then
save changes.

```
ggdbg>sip set peertopeer_mode 1  
Modify Peer to Peer Mode To 1  
OK  
ggdbg>nwdbg save changes
```

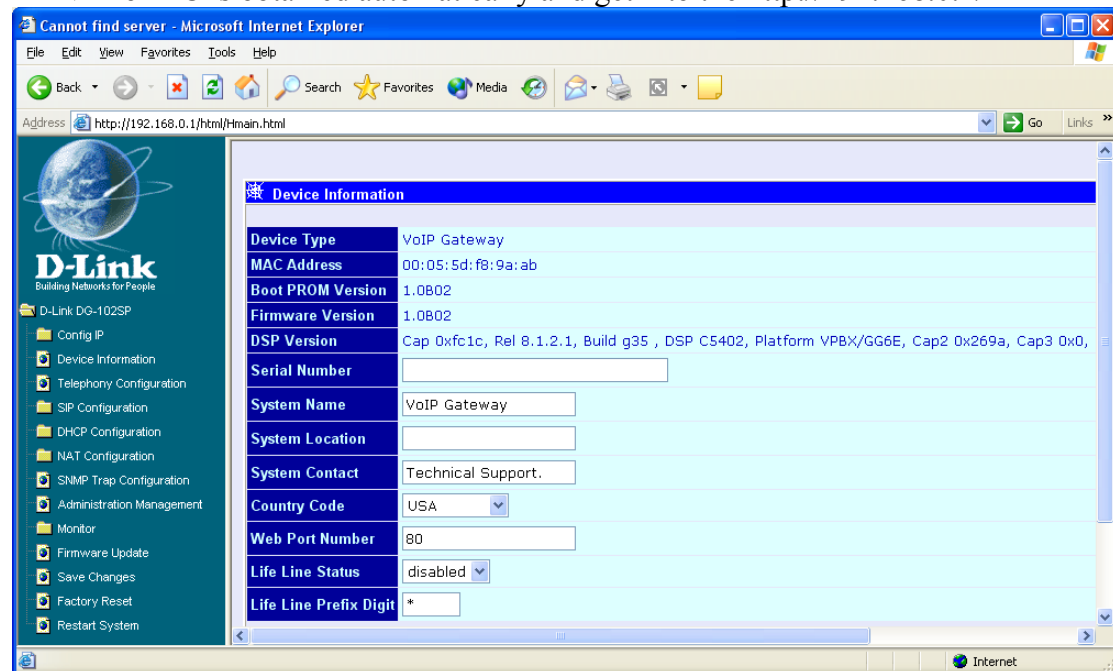
Wait and don't power off !!!

PROM Version: 1.0B02
RUNTIME Version: 1.0B02

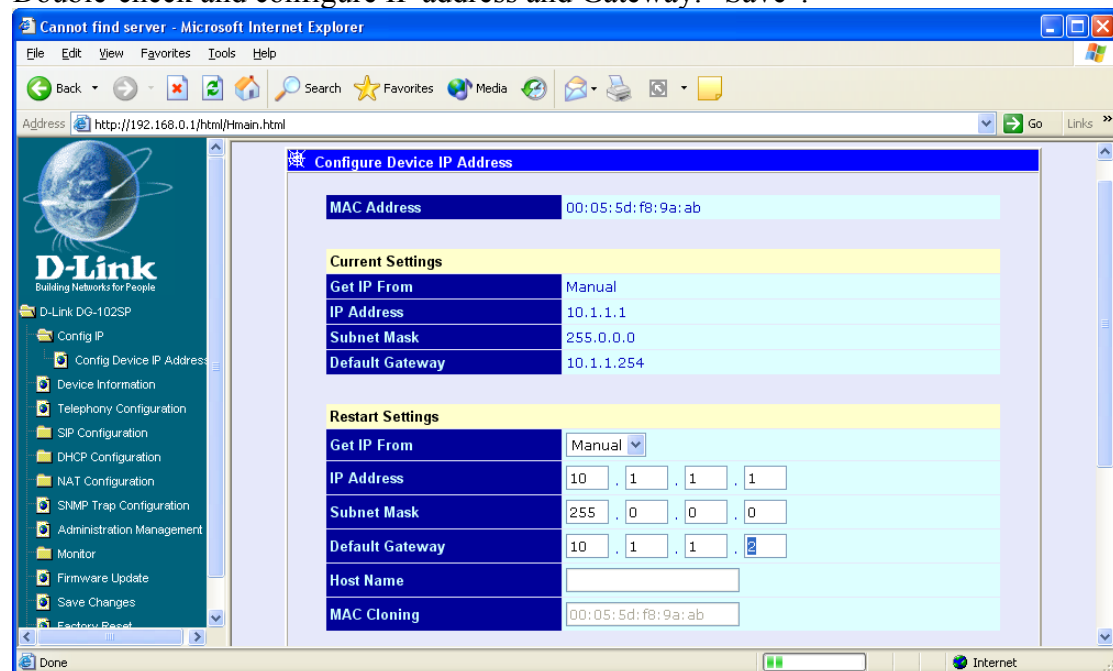
12. Setup on DG-102SP#2 is completed.
The setting on DG-102SP#1 is basically identical.

Set up on DG-102SP#1

LAN IP on PC is obtained automatically and get into the <http://192.168.0.1/>



Double-check and configure IP address and Gateway. "Save".



Select "SIP-URL", then "Save".

SIP Configuration - Server

IP Address	0 . 0 . 0 . 0
Port	5060
Service Domain	
URL Format	SIP-URL
User Parameter Phone	enabled
Timer T2	4 sec

Initial Unregister	enabled
Register Expiration	3600 sec
Session Expires	180 sec
Min-SE	180 sec
Session Expires Refresher	uac

Codec Priority & Packet Interval

G.711a-law	3rd	20 ms
G.711u-law	1st	20 ms
G.723.1	2nd	30 ms
G.729a	4th	20 ms

Set up “1002” and “5060” as DG-102SP#1 Phone Number and User Agent Port.
“Save”.

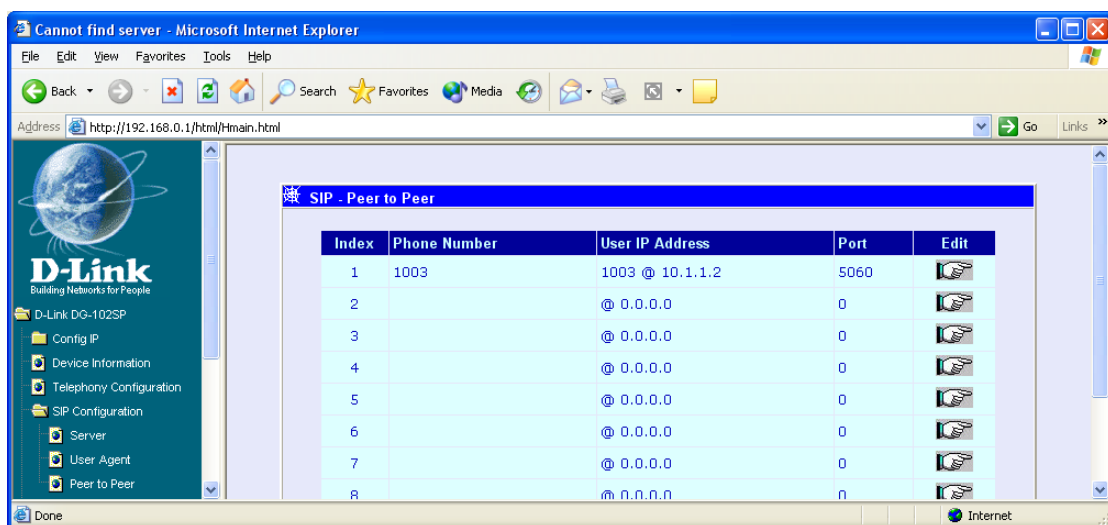
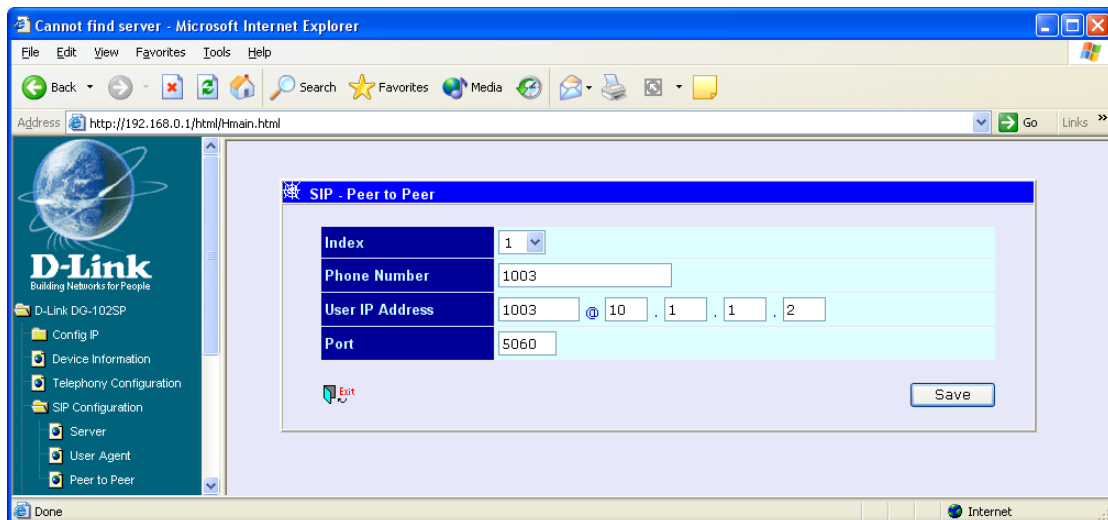
SIP Configuration - User Agent

Same Phone Number	disabled
Index	1
Phone Number	1002
Display Name	1002
User Agent Port	5060
Authentication Username	
Authentication Password	
Confirm Password	

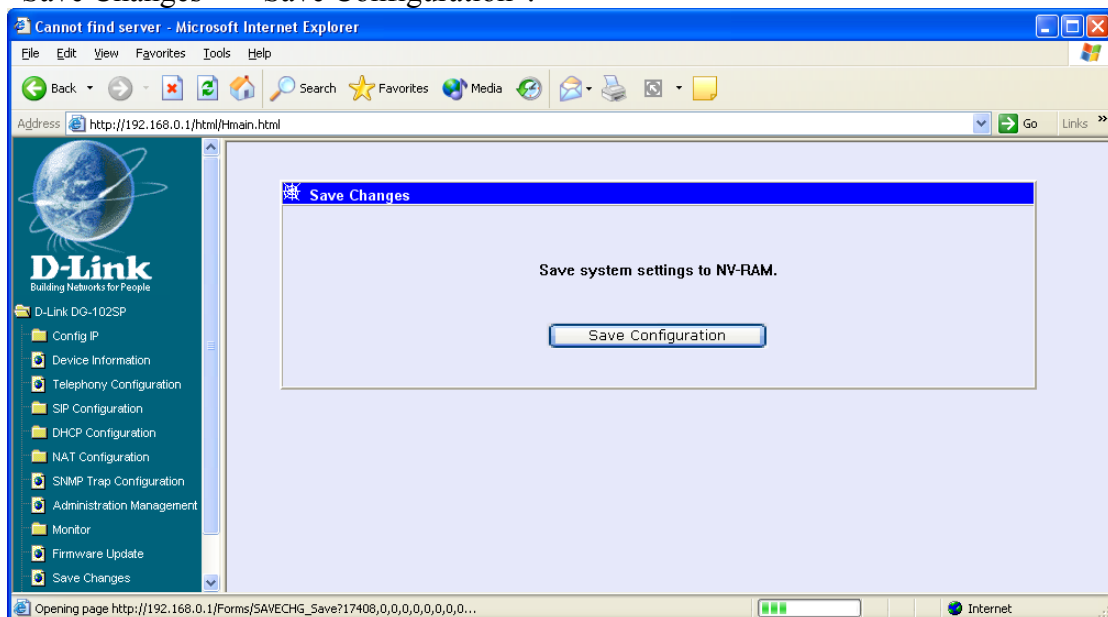
Save

Query Registration State **Query** **Register** **Unregister**

Set up “Peer to Peer”, “Edit” and “Save”.



“Save Changes” – “Save Configuration”.



Set up the console settings and save changes.


```
ggdbg>sip set peertopeer_mode 1  
Modify Peer to Peer Mode To 1  
OK  
ggdbg>nwdbg save changes
```

Wait and don't power off !!!

PROM Version: 1.0B02
RUNTIME Version: 1.0B02

Results

When calling from the phone connected to DG-102G#1, pick up the phone set as per normal and dial 1003.

The phone connected to DG-102G#2 will ring. Communication is fine.

When calling from the phone connected to DG-102G#2, pick up the phone set as per normal and dial 1002.

The phone connected to DG-102G#1 will ring. Communication is fine.

~End of Document~