

QUICK INSTALL GUIDE

DPH-150S/150SE

VERSION 1.00



D-Link[®]

UOIP

Quick Installation Guide

DPH-150S/SE

IP Phone

Check Your Package Contents



DPH-150S/SE
IP Phone



CD-ROM which
includes the User
Manual



Handset




Handset cord



Ether (CAT5
UTP) Cable

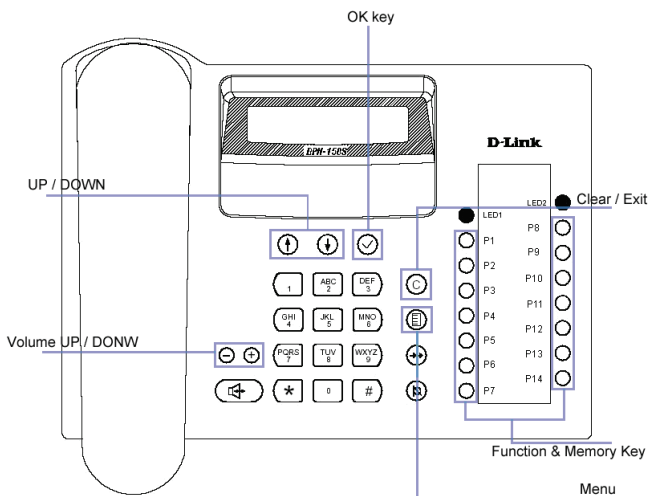


Power Adapter

 Using a power adapter with a different voltage rating will damage this product and void the warranty.

OVERVIEW

The DPH-150S(SE) IP Phone allows callers to take advantage of their Internet connection to make inexpensive Internet phone calls. The DPH-150SE includes PoE (Power over Ethernet) and does not require a DC power adapter. Besides the PoE function, all other device and configuration features are the same for DPH-150S and DPH-150SE.

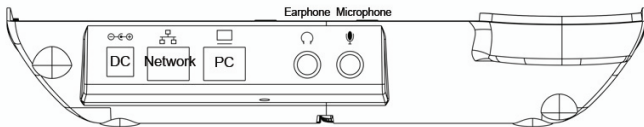


Button Name	Function
UP/DOWN buttons	Moves cursor on the phone's LCD screen
Volume UP/DOWN buttons	Controls phone volume
OK key button	Confirms and enters options on the LCD screen
Clear / Exit button	Clears the selected item on the LCD screen, returns to the Main screen from any other setup screen
Function & Memory Keys buttons	Controls call activity and speed dial
Menu button	Sets up and updates phone appearance and screen functions

START UP

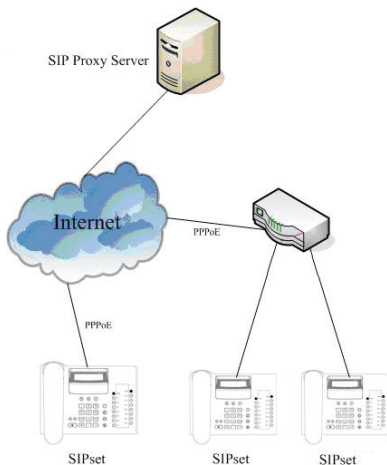
For the DPH-150S, plug in the DC power adapter. All LEDs will light ON and the phone will start up.

For the DPH-150SE, if your switch supports PoE, then you don't need use our DC power adapter. Connect an Ethernet cable (RJ-45) to the Network port on the phone, connect the other end to your PoE switch, and the DPH-150S will start up automatically.







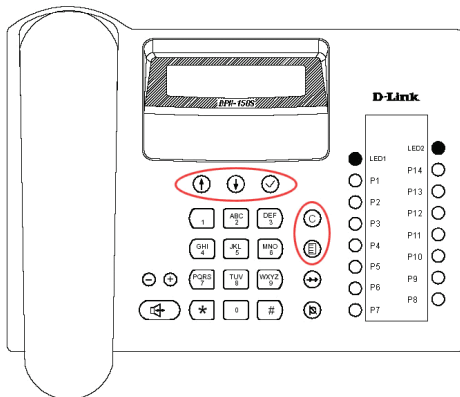
CONNECTION

Connect an Ethernet cable (RJ-45) to the **Network** port on the phone. The other end of the Ethernet cable connects the SIP server's networks.







Configure a fixed IP address

1. Press the Menu button  and the LCD screen will display the configuration menu.
2. Select "Network setting"→"Set IP mode" →"FIXED". Press  to save the configuration.
3. Select "Network setting"→"IP Address". Enter the IP Address. Press  to save the configuration.
4. Select "Network setting"→"IP Mask". Enter the IP mask. Press  to save the configuration.
5. Reboot the phone manually and then the configuration will be effective.
6. For more detailed information, please refer to the user manual.



Configure SIP information

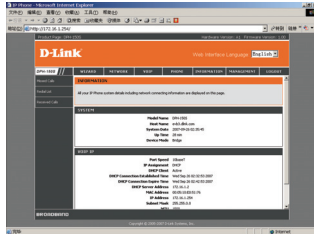
1. Press the Menu button  and the LCD screen will display the configuration menu.
2. Select "SIP setting"→"Proxy setting"→"PxyServ". Enter the Proxy Server IP Address. Press  to save the configuration.
3. Select "SIP setting"→"Proxy setting"→"RegServ". Enter the Register Server IP Address. Press  to save the configuration.
4. Select "SIP setting"→"User Info"→"PhoneNum". Enter the phone number. Press  to save the configuration.

- The configuration will be effective at once. There is no need to reboot the phone.
- For more detailed information, please refer to the user manual.

Logging in to the DPH-150S(SE) web management interface:

- Enter DPH-150S's (DPH-150SE's) IP address in Internet Explorer's address field.

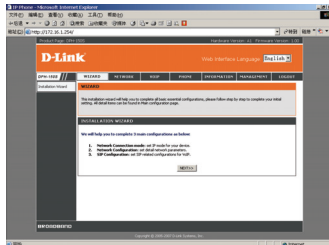
Example: <http://X.X.X.X>



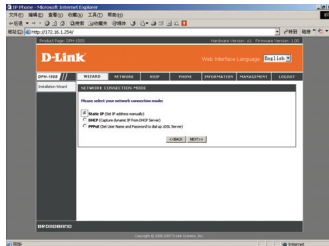
Using the Installation Wizard to configure a fixed IP address

DHCP/PPPoE:

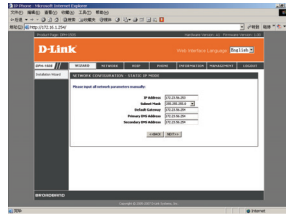
- Select **Installation Wizard** in the menu.
- Click the **Next** button.



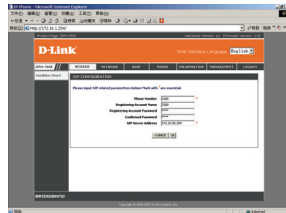
- Select Connect mode **Static IP**, **DHCP**, or **PPPoE**.



4. Configure the IP Address and Mask, Gateway, DNS address, click **NEXT**.

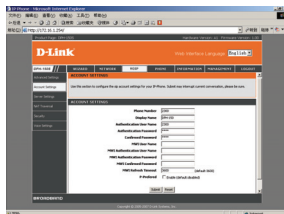


7. Configure the SIP information and click **OK**. Reboot the phone manually.

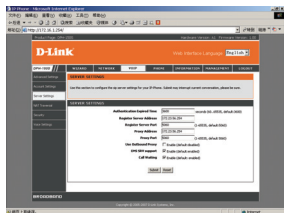


How to set up DPH-150S (SE) quickly:

1. Log in to DPH-150S(SE) web configuration.
2. Choose VOIP→Account Setting.
3. Modify Account Information, and click the **Submit** button.



4. Choose VOIP→Server Setting
5. Modify Server Information, and click the **Submit** button.



6. If your SIPSET LCD displays DPH-150S(SE), that means it has registered successfully. Now you can dial a number.

D-Link®



RECYCLABLE

Ver. 1.00

2007/10/12

F39033-V6000-V105