

測試檢驗報告

TESTING / INSPECTION REPORT

委託者 Applicant	郭哲璋	發行日期 Issue date	Feb.11 2003
檢驗物品 Commodity	IP PHONE	版本 Revision	A2
型號 Model	DPH-80	總頁數 Total Page	11

測試檢驗項目

TESTING / INSPECTION ITEMS

Cold test.....P1
 Dry heat test.....P2
 Damp heat test.....P3
 Damp heat Cyclic test.....P4
 E.S.D. test.....P5-P6
 Thermal profile test.....P7-P8
 Nine corner test.....P9
 Testing configuration.....P10

測試工程師

Prepared By :

曾守璋

確認

Checked By :

江昌盈

核准簽名

Approved By :

Guo

Test Item : Cold test

Test equipment :

ESPEC PDL-4SP Temperature-Humidity Chamber

Test ambience :

Temperature : 23 ± 5

Humidity(RH) : $60 \pm 5\%$

EUT's Model & Quantity :

Model : DPH-80

Version : A2

Quantity : 2 sets

Test conditions : Operation

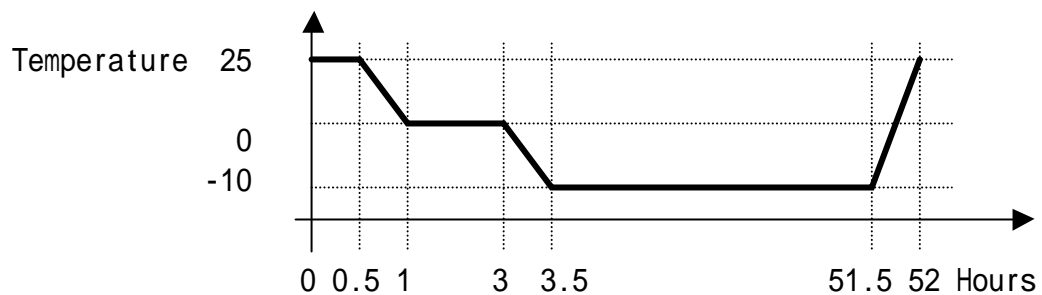
Test method : Refer IEC 68-2-1

Temperature : -10 ± 3

Humidity : Uncontrolled

Test duration : 48 hours

Temperature change rate : 0.5 /min



Test results :

1. Visual inspection was normal after test.
2. Data transmit & receive function was normal during the test.
3. 0 power on and TX/RX function was normal.

Test Item : Dry heat test

Test equipment :

ESPEC PDL-4SP Temperature-Humidity Chamber

Test ambience :

Temperature : 23 ± 5

Humidity(RH) : $60 \pm 5\%$

EUT's Model & Quantity :

Model : DPH-80

Version : A2

Quantity : 2 sets

Test conditions : Operation

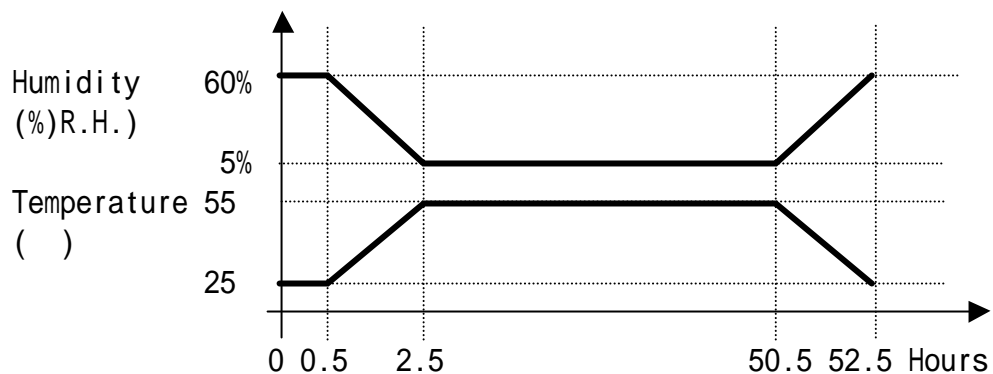
Test method : Refer IEC 68-2-2

Temperature : 55 ± 2

Humidity : 5% RH

Test duration : 48 hours

Temperature change rate : 0.5 /min



Test results :

1. Visual inspection was normal after test.
2. Data transmit & receive function was normal during the test.

Test Item : Damp heat test

Test equipment :

ESPEC PDL-4SP Temperature-Humidity Chamber

Test ambiance :

Temperature : 23 ± 5

Humidity(RH) : $60 \pm 5\%$

EUT's Model & Quantity :

Model : DPH-80

Version : A2

Quantity : 2 sets

Test conditions : Operation

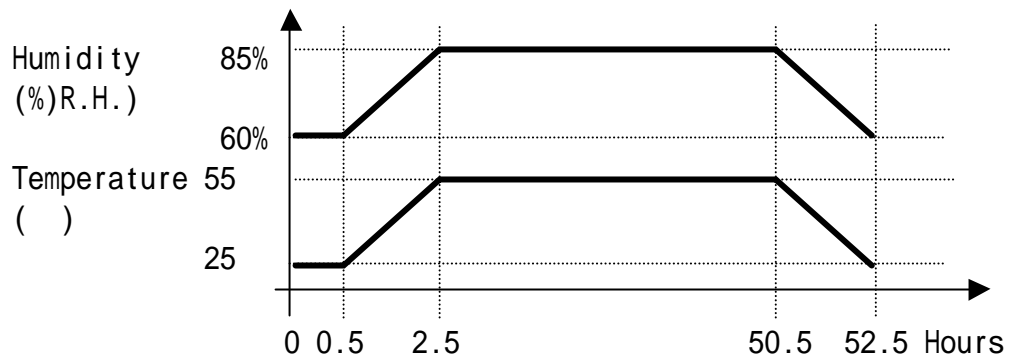
Test method : Refer IEC 68-2-3

Temperature : 55 ± 2

Humidity : $85 \pm 2-3\%RH$

Test duration : 48 hours

Temperature change rate : 0.5 /min



Test results :

1. Visual inspection was normal after test.
2. Data transmit & receive function was normal during the test.

Test Item : Damp heat cyclic test

Test equipment :

ESPEC PDL-4SP Temperature-Humidity Chamber

Test ambiance :

Temperature : 23 ± 5

Humidity(RH) : $60 \pm 5\%$

EUT's Model & Quantity :

Model : DPH-80

Version : A2

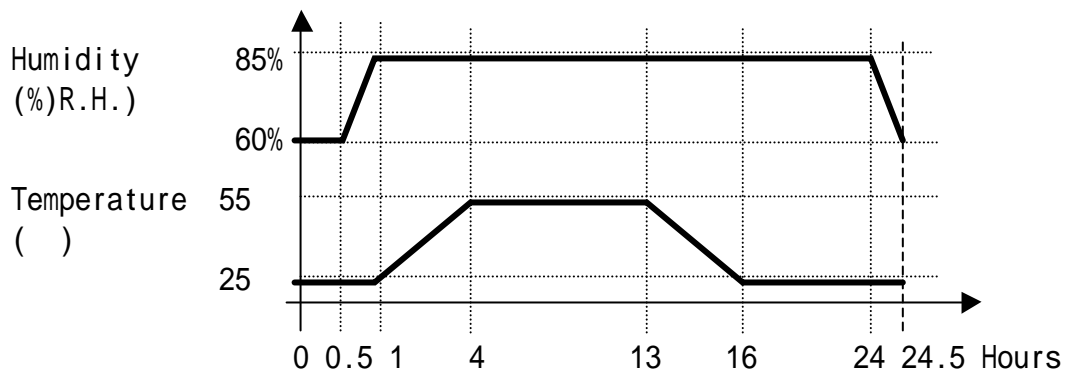
Quantity : 2 sets

Test conditions : Operation

Test method : Refer IEC 68-2-30

Cyclic time : 24 hours

Number of cyclic : 2 cycles



Test results :

1. Visual inspection was normal after test.
2. Data transmit & Receive function was normal during the test.

Test Item : E.S.D. test

Test equipment :

Electrostatic Discharge Simulator Noiseken ESS-100L

Test ambience :

Temperature : 15 ~ 35

Humidity(RH) : 30 ~ 60%

EUT's Model & Quantity :

Model : DPH-80

Version : A2

Quantity : 2 sets

Test conditions : Operation

Test method : Refer IEC 61000-4-2

Criteria :

- 1.normal performance within the specification limits
- 2.temporary degradation or loss function or performance which is self-recoverable.
- 3.temporary degradation or loss function or performance which requires operator intervention or system reset.
- 4.degradation or loss of function which is not recoverable, due to damage of equipment(component) or software.



Test results :

Criteria Test Level	Contact Discharge	Indirect E.S.D.	
		HCP	VCP
±2 kv	1	1	1
±4 kv	1	1	1
±6 kv	X	X	X
±8 kv	X	X	X
Special	X	X	X

X : Do not application

Criteria Test Level	Air Discharge
±2 kv	1
±4 kv	1
±8 kv	1
±15 kv	X
Special	X

X : Do not application

Test Item : Thermal profile test

Test equipment :

YOKOGAWA DR130 HYBRID RECORDER

Test ambiance :

Temperature : 23 ±5

Humidity(RH) : 60 ±5%

EUT's Model & Quantity :

Model : DPH-80

Version : A2

Quantity : 1 set

Test conditions : Operation

Test method : Refer Doc No. 127-000014

Temperature : Room temperature

Test duration : 4 hours



Test results

Unit :

Location		Standard	Temp 40 of Calculate
	Room temp.	20.2	
PCBA	T1	31.2	51
	U1	41.8	61.6
	D4	36.8	56.6
	U7	32.1	51.9
	U4	35.8	55.6
	U2	42	61.8
	U3	32	51.8
Power Adaptor	T1 coil	43.9	63.7
	T1 core	47.6	67.4
	Exterior of top cover	31.5	51.3
Case	Exterior of top cover above U2	25	44.8
	Exterior of bottom cover under U2	28.6	48.4

Temperature rise is calculate as follow :

OT(Operation Temp.) : 40

T= OT-room temp. = 19.8

Result of temp. = test temp.+ T

Test Item : Nine corner test

Test equipment :

1. ESPEC PDL-4SP Temperature-Humidity Chamber
2. LABORATORY DC POWER SUPPLY GPR-1820HD*1
3. Multimeter *1

Test ambience :

Temperature : 23 ± 5

Humidity(RH) : $60 \pm 5\%$

EUT's Model & Quantity :

Model : DPH-80

Version : A2

Quantity : 1 set

Test conditions : Operation

Test method : Refer Doc No. 127-000013

Test temperature : -5 , 25 , 55

DC power : 9 Vdc $\pm 6\%$

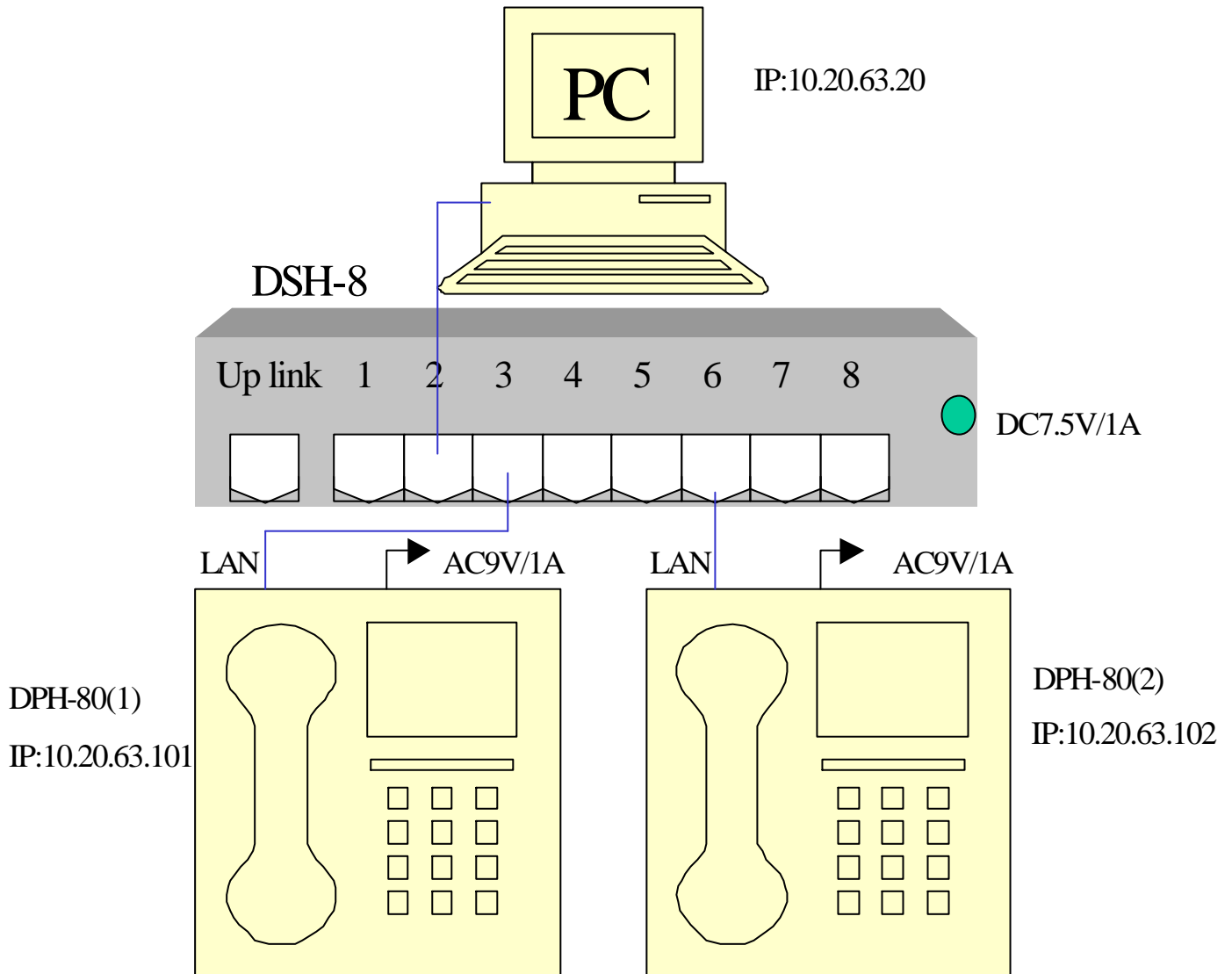
No. of ping : 1000 times

Test results :

Voltage \ Temp.	9V		
	8.5V	9V	9.5V
55	Pass	Pass	Pass
25	Pass	Pass	Pass
-5	Pass	Pass	Pass

Testing configuration for DPH-80 test

Test program : Ping of windows



1. Perform ping test form PC to DPH-80(1) LAN .
2. Perform ping test form PC to DPH-80(2) LAN .
3. Perform dial link form DPH-80(1) to DPH-80(2) .
3. Power adapter : YNG YUH ELECTRONIC CO,LTD