



DAP-1155

Wireless N 150 Access Point & Router

BEFORE YOU BEGIN

Delivery Package

- Access point DAP-1155
- Power adapter DC 12V
- Ethernet cable (CAT 5E)
- “*Quick Installation Guide*” (brochure).

If any of the items are missing, please contact your reseller.

The “*User Manual*” and “*Quick Installation Guide*” documents in Russian and English are available on D-Link website (see <ftp.dlink.ru/pub/Wireless/DAP-1155/Description/Rev.B/>).

! Using a power supply with a different voltage rating than the one included will cause damage and void the warranty for this product.

Default Settings

| | |
|---------------------------------|--------------|
| IP address of access point | 192.168.0.50 |
| Username (login) | admin |
| Password | admin |
| Name of wireless network (SSID) | DAP-1155 |

System Requirements and Equipment

- A computer with any operating system that supports a web browser.
- A web browser to access the web-based interface of the access point: Windows Internet Explorer, Mozilla Firefox, or Opera.
- A NIC (Ethernet or Wi-Fi adapter) to connect to the access point.
- An 802.11b, g or n Wi-Fi adapter to create a wireless network.

CONNECTING TO PC

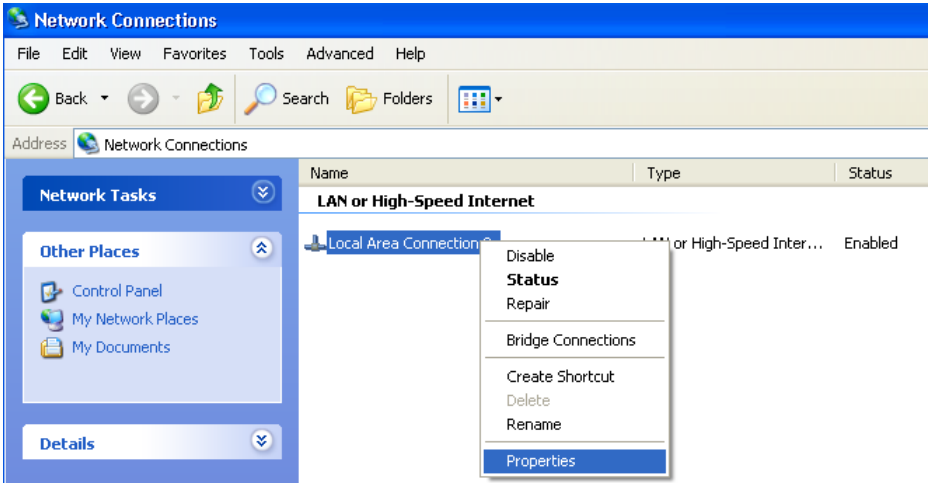
PC with Ethernet Adapter

1. Make sure that your PC is powered off.
2. Connect an Ethernet cable between the LAN port located on the back panel of the access point and the Ethernet port of your PC.
3. Connect the power cord to the power connector port on the back panel of the access point, then plug the power adapter into an electrical outlet or power strip.
4. Turn on your PC and wait until your operating system is completely loaded.

Now you need to configure an IP address for the Ethernet adapter of your PC.

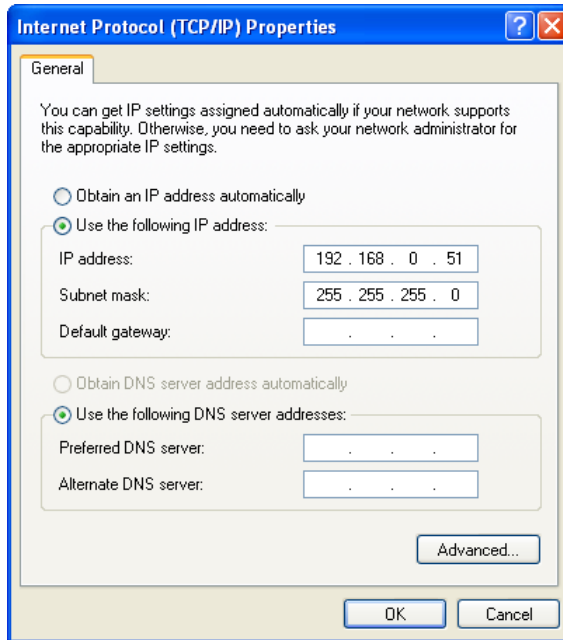
Configuring IP Address in OS Windows XP

1. Click the **Start** button and proceed to the **Control Panel > Network and Internet Connections > Network Connections** window.
2. In the **Network Connections** window, right-click the relevant **Local Area Connection** icon and select the **Properties** line in the menu displayed.



3. In the **Local Area Connection Properties** window, on the **General** tab, select the **Internet Protocol (TCP/IP)** line. Click the **Properties** button.

4. Select the **Use the following IP address** radio button and enter the value **198.168.0.51** in the **IP address** field. The **Subnet mask** field will be filled in automatically. Click the **OK** button.

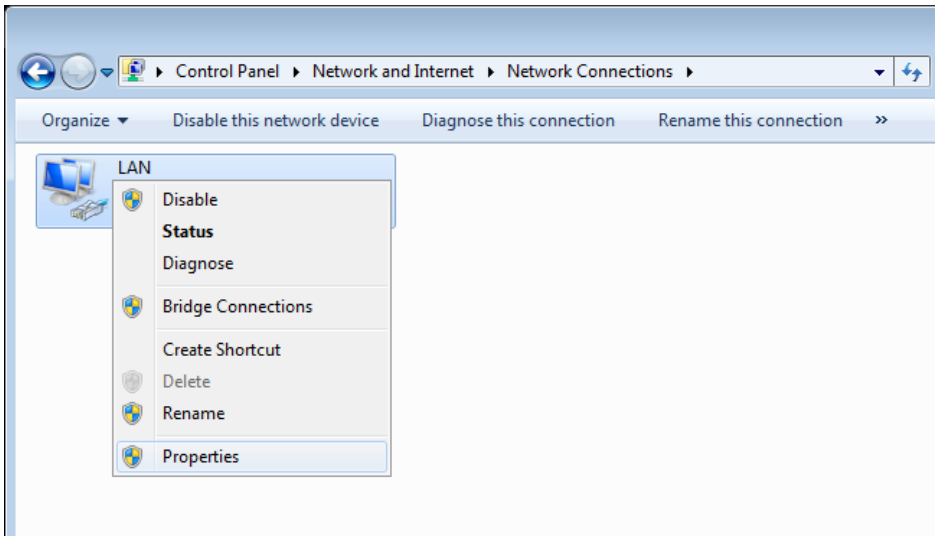


5. Click the **OK** button in the connection properties window.

Now you can connect to the web-based interface of DAP-1155 for configuring all needed parameters. To gain access to an external network (to the Internet), you also need to specify the default gateway and the addresses of DNS servers.

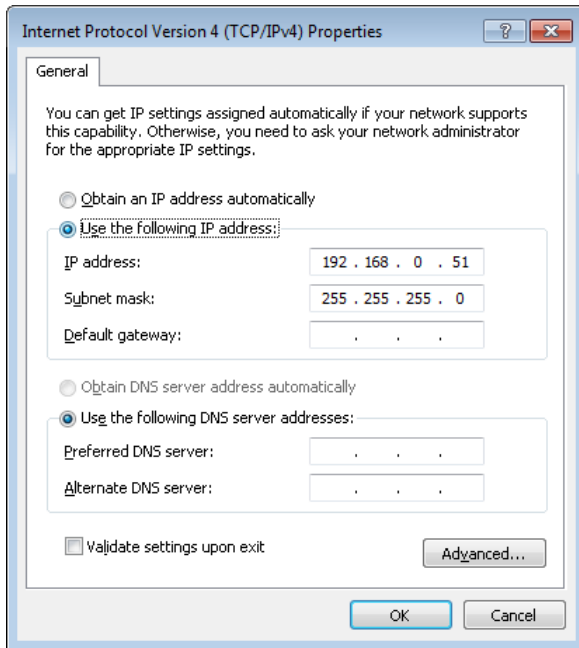
Configuring IP Address in OS Windows 7

1. Click the **Start** button and proceed to the **Control Panel** window.
2. Select the **Network and Sharing Center** section. (If the Control Panel has the category view (the **Category** value is selected from the **View by** drop-down list in the top right corner of the window), choose the **View network status and tasks** line under the **Network and Internet** section.)
3. In the menu located on the left part of the window, select the **Change adapter settings** line.
4. In the opened window, right-click the relevant **Local Area Connection** icon and select the **Properties** line in the menu displayed.



5. In the **Local Area Connection Properties** window, on the **Networking** tab, select the **Internet Protocol Version 4 (TCP/IPv4)** line. Click the **Properties** button.

6. Select the **Use the following IP address** radio button and enter the value **198.168.0.51** in the **IP address** field. The **Subnet mask** field will be filled in automatically. Click the **OK** button.



7. Click the **OK** button in the connection properties window.

Now you can connect to the web-based interface of DAP-1155 for configuring all needed parameters. To gain access to an external network (to the Internet), you also need to specify the default gateway and the addresses of DNS servers.

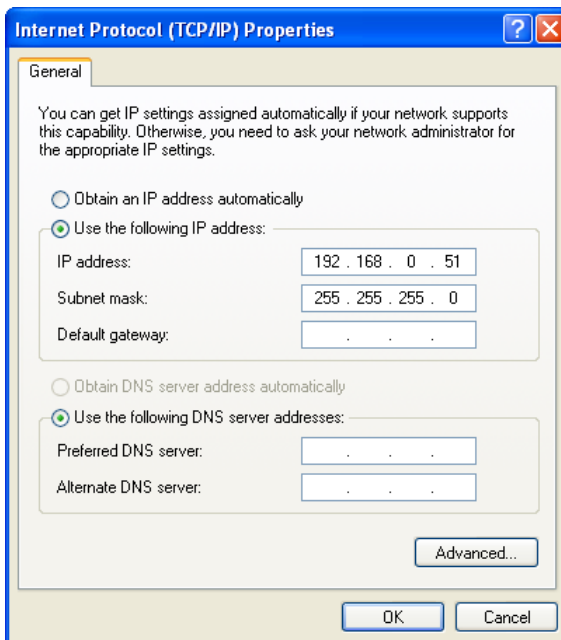
PC with Wi-Fi Adapter

1. Connect the power cord to the power connector port on the back panel of the access point, then plug the power adapter into an electrical outlet or power strip.
2. Turn on your PC and wait until your operating system is completely loaded.
3. Turn on your Wi-Fi adapter. As a rule, modern notebooks with built-in wireless NICs are equipped with a button or switch that turns on/off the wireless adapter (refer to your PC documents). If your PC is equipped with a pluggable wireless NIC, install the software provided with your Wi-Fi adapter.

Now you should configure your Wi-Fi adapter.

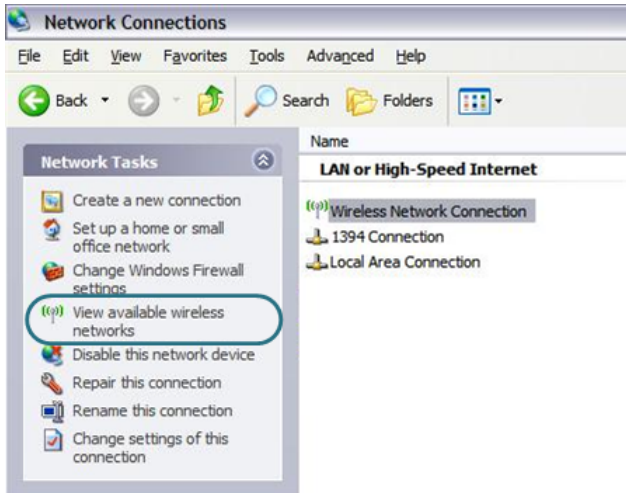
Configuring Wi-Fi Adapter in OS Windows XP

1. Click the **Start** button and proceed to the **Control Panel > Network and Internet Connections > Network Connections** window.
2. In the **Network Connections** window, right-click the relevant **Wireless Network Connection** icon. Make sure that your Wi-Fi adapter is on, then select the **Properties** line in the menu displayed.
3. In the **Wireless Network Connection Properties** window, on the **General** tab, select the **Internet Protocol (TCP/IP)** line. Click the **Properties** button.
4. Select the **Use the following IP address** radio button and enter the value **198.168.0.51** in the **IP address** field. The **Subnet mask** field will be filled in automatically. Click the **OK** button.



5. Click the **OK** button in the connection properties window.

6. Search for available wireless networks.



7. In the opened **Wireless Network Connection** window, select the wireless network **DAP-1155** and click the **Connect** button.

After that the **Wireless Network Connection Status** window appears.

Now you can connect to the web-based interface of DAP-1155 for configuring all needed parameters. To gain access to an external network (to the Internet), you also need to specify the default gateway and the addresses of DNS servers.

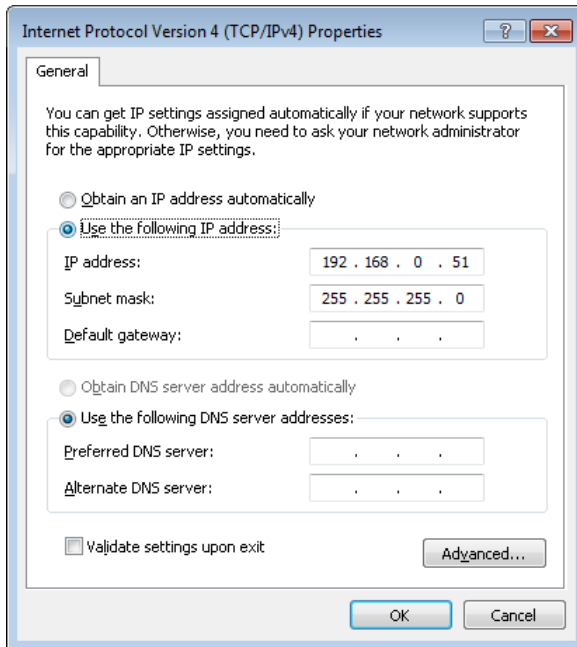


If you perform initial configuration of the access point via Wi-Fi connection, note that immediately after changing the wireless default settings of the access point you will need to reconfigure the wireless connection using the newly specified settings.

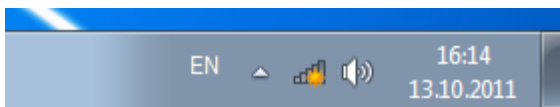
Configuring Wi-Fi Adapter in OS Windows 7

1. Click the **Start** button and proceed to the **Control Panel** window.
2. Select the **Network and Sharing Center** section. (If the Control Panel has the category view (the **Category** value is selected from the **View by** drop-down list in the top right corner of the window), choose the **View network status and tasks** line under the **Network and Internet** section.)
3. In the menu located on the left part of the window, select the **Change adapter settings** line.
4. In the opened window, right-click the relevant **Wireless Network Connection** icon. Make sure that your Wi-Fi adapter is on, then select the **Properties** line in the menu displayed.
5. In the **Wireless Network Connection Properties** window, on the **Networking** tab, select the **Internet Protocol Version 4 (TCP/IPv4)** line. Click the **Properties** button.

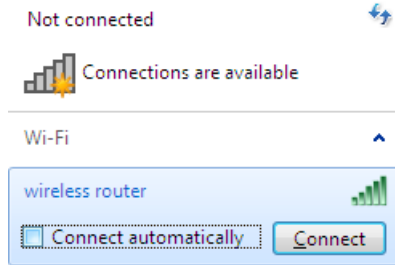
6. Select the **Use the following IP address** radio button and enter the value **198.168.0.51** in the **IP address** field. The **Subnet mask** field will be filled in automatically. Click the **OK** button.



7. Click the **OK** button in the connection properties window.
8. To open the list of available wireless networks, select the icon of the wireless network connection and click the **Connect To** button or left-click the network icon in the notification area located on the right side of the taskbar.



- In the opened window, in the list of available wireless networks, select the wireless network **DAP-1155** and click the **Connect** button.



Open Network and Sharing Center

- Wait for about 20-30 seconds. After the connection is established, the network icon will be displayed as the signal level scale.

Now you can connect to the web-based interface of DAP-1155 for configuring all needed parameters. To gain access to an external network (to the Internet), you also need to specify the default gateway and the addresses of DNS servers.

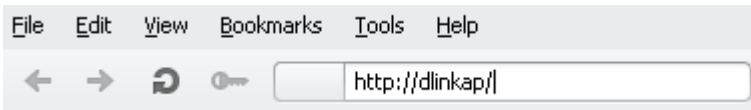


If you perform initial configuration of the access point via Wi-Fi connection, note that immediately after changing the wireless default settings of the access point you will need to reconfigure the wireless connection using the newly specified settings.

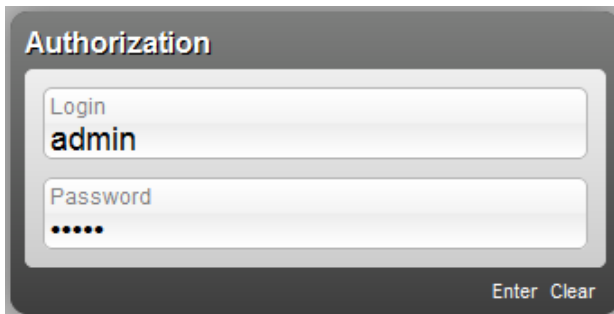
CONFIGURING ACCESS POINT

Connecting to Web-based Interface

1. Start a web browser.
2. In the address bar of the web browser, enter **http://dlinkap/** or **http://192.168.0.50/** (the default IP address of the access point). Press the **Enter** key.

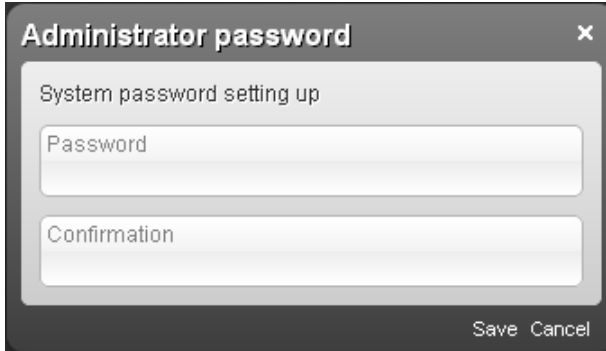


3. On the opened page, enter the username and password for the administrator account in the **Login** and **Password** fields correspondingly (by default, the following username and password are specified: **admin, admin**). Then click the **Enter** link.

A screenshot of a web page titled 'Authorization'. It features two input fields: 'Login' and 'Password'. The 'Login' field contains the text 'admin'. The 'Password' field contains six dots, indicating a masked password. At the bottom right of the form, there are two buttons labeled 'Enter' and 'Clear'.

! If the error “The page cannot be displayed” (or “Unable to display the page”/“Could not connect to remote server”) occurs upon connecting to the web-based interface of the access point, make sure that you have properly connected the device to your computer.

Right after the first access to the web-based interface you are forwarded to the page for changing the administrator password specified by default.



Enter a new password in the **Password** and **Confirmation** fields (you may use digits, Latin letters (uppercase and/or lowercase), and characters available on the keyboard), then click the **Save** link.

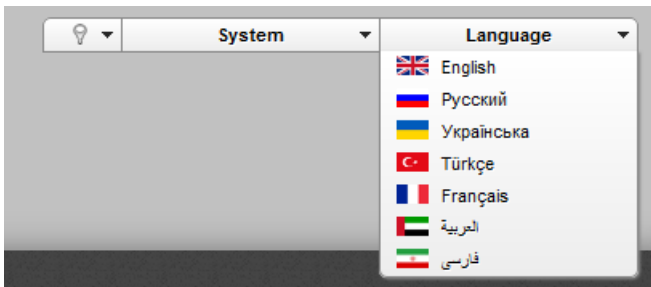



Remember or write down the new password for the administrator account. In case of losing the new password, you can access the settings of the access point only after restoring the factory default settings via the hardware **WPS/RESET** button. This procedure wipes out all settings that you have configured for your device.

After successful registration the access point's quick settings page opens.



The web-based interface of the access point is multilingual. Select a needed language from the menu displayed when the mouse pointer is over the **Language** caption. You can change the language of the web-based interface in any menu item.



After selecting the language, the notification on unsaved changes will be displayed. Click the **Save** icon () to save the current language of the web-based interface as the default language.

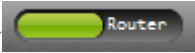
The page displays general information on the access point and its software (the version and the date of the firmware, the IP address of the device, the name of the WLAN, etc.).

On the quick settings page, you can quickly get to some pages of the web-based interface or run the Wi-Fi Setup Wizard (use the link on the left side of the page).

From the quick settings page you can switch to the advanced settings section. To do this, click the **Advanced settings** link in the bottom right corner of the page.

Also you can find a specific page via search. To do this, enter the name of the page, wholly or partly, in the search bar in the top part of the web-based interface page, and then select a needed link in the search results.

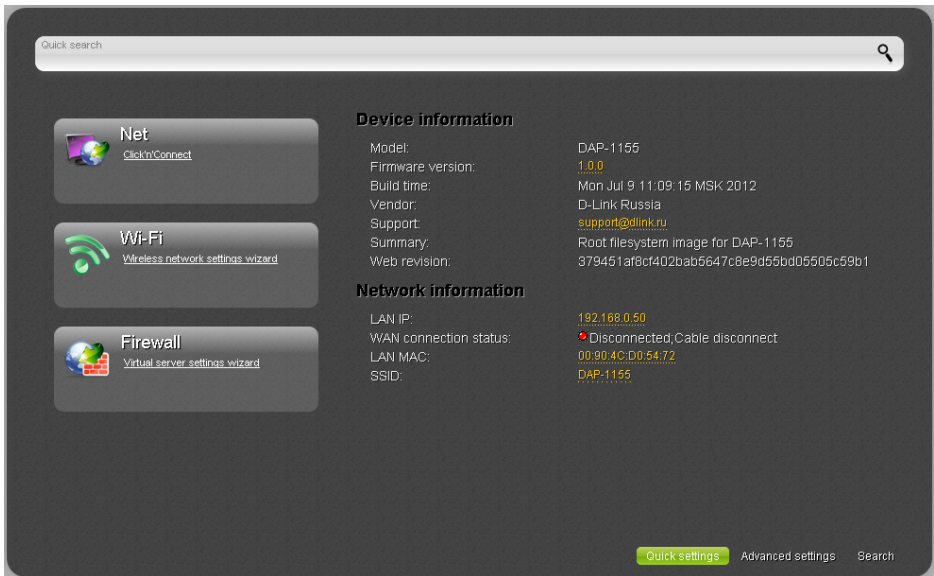
Selecting Operation Mode

By default, the access point mode is specified for the device. If you need to use the device as a router, on the advanced settings page, select the **Router** position () of the **Switch device mode** switch. In the opened dialog box, click the **OK** button to save new settings and immediately reboot the access point.

Also you can change the operating mode of the device on the **System / Device mode** page. To do this, on the page, select the **Router** value from the **Work mode** list, and click the **Change** button. In the opened dialog box, click the **OK** button and wait until the device is rebooted.



After the device has rebooted, the quick settings page in the router mode opens.



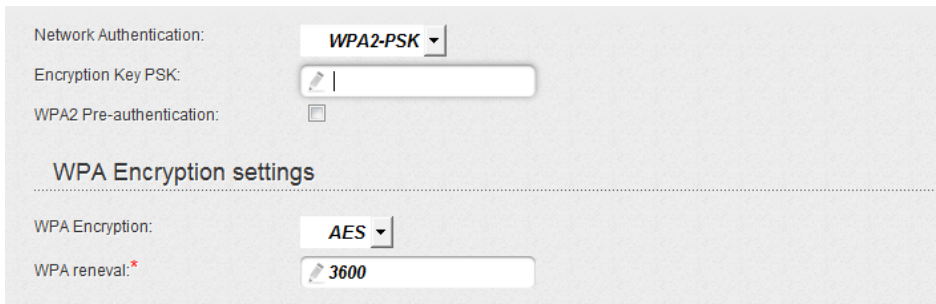
On the opened page, you can proceed to the Wizards (use the links on the left side of the page), quickly get to some pages of the web-based interface, find a specific page via search, or switch to the standard web-based interface of the access point by clicking the **Advanced settings** link in the bottom right corner of the page.

Configuring Wireless Network

By default, the wireless network of the access point is open (it requires no password to access it). To avoid unauthorized access to your wireless local area network, change the default settings of the access point.

Example of Wireless Settings

1. Go to the **Wi-Fi / Security settings** page.
2. Select the **WPA2-PSK** value from the **Network Authentication** drop-down list.



The screenshot shows a configuration interface for wireless network settings. It includes the following fields and options:

- Network Authentication:** A dropdown menu with **WPA2-PSK** selected.
- Encryption Key PSK:** A text input field with a pencil icon on the left.
- WPA2 Pre-authentication:** A checkbox that is currently unchecked.
- WPA Encryption settings:** A section header with a dotted line below it.
- WPA Encryption:** A dropdown menu with **AES** selected.
- WPA renewal:** A text input field containing the value **3600**.

3. Enter a key (a password that will be used to access your wireless network) in the **Encryption Key PSK** field. Use digits and Latin characters.
4. Select the **AES** value from the **WPA Encryption** drop-down list.
5. Click the **Change** button.



If you perform initial configuration of the access point via Wi-Fi connection, note that immediately after changing the wireless default settings you will need to reconfigure the wireless connection using the newly specified settings.

Configuring Local Area Network

1. Go to the **Net / LAN** page. If needed, change the IP address of the access point's LAN interface and the mask of the local subnet in the **IP Address** and **Netmask** fields. Then click the **Save** button.

IP Address: *

Netmask: *

2. By default, the DHCP server of the device in the access point mode is disabled (the **Disable** value is selected from the **Mode** drop-down list). As a rule, the DHCP server should be disabled when the device is used in the access point mode. If you need to specify other settings, change the parameters of the DHCP server.

DHCP server

Mode:

3. After specifying the DHCP server settings, click the **Save** button.

Configuring Connection to the Internet (Router Mode Only)



You should configure your WAN connection in accordance with data provided by your Internet service provider (ISP). Make sure that you have obtained all necessary information prior to configuring your connection. Otherwise contact your ISP.

1. Go to the **Net / WAN** page and click the **Add** button.
2. In the **General settings** section, select a needed value from the **Connection Type** drop-down list.
3. From the **Port** drop-down list, select the **WAN** value.
4. Specify a name for your connection (any name for easier identification) in the **Name** field.

General settings


Connection Type:

Port:

Name: *

Enable:

Direction: WAN

5. If your ISP uses MAC address binding, in the **Ethernet** section, in the **MAC** field, enter the MAC address registered by your ISP upon concluding the agreement. To set the MAC address of the network interface card (of the computer that is being used to configure the access point at the moment) as the MAC address of the WAN interface, click the **Clone MAC Address** button (). To set the address of a device connected to the access point's LAN at the moment, select the relevant value from the drop-down list (the field will be filled in automatically).

Ethernet

MTU:*

MAC: 

6. *For connection of PPPoE type:* in the **PPP** section, enter authorization data provided by your ISP (the username (login) in the **Username** field and the password in the **Password** and **Password confirmation** fields), or select the **Without authorization** checkbox if authorization is not required.

PPP

Username:*

Without authorization:

Password:*

Password confirmation:*

7. *For connection of Static IP type:* in the **IP** section, fill in the **IP Address**, **Netmask**, **Gateway IP address**, and **Primary DNS server** fields.

IP

IP Address:*

Netmask:*

Gateway IP address:*

Primary DNS server:*

Secondary DNS server:

8. *For connection of Dynamic IP type:* if your ISP has provided the address of the DNS server, in the **IP** section, deselect the **Obtain DNS server addresses automatically** checkbox and fill in the **Primary DNS server** field.

IP

Obtain DNS server addresses automatically:

Primary DNS server:*

Secondary DNS server:

Vendor ID:

9. **For connection of PPTP + Static IP or L2TP + Static IP type:** in the **IP** section, fill in the **IP Address**, **Netmask**, **Gateway IP address**, and **Primary DNS server** fields. Then in the **VPN** section, enter authorization data provided by your ISP (the username (login) in the **Username** field and the password in the **Password** and **Password confirmation** fields), or select the **Without authorization** checkbox if authorization is not required. In the **VPN server address** field, enter the IP or URL address of the PPTP or L2TP authentication server. If your ISP applies encryption, select a needed value from the **Encryption** drop-down list.

IP

IP Address:*

Netmask:*

Gateway IP address:*

Primary DNS server:*

Secondary DNS server:

VPN

Connect automatically:

Username:*

Without authorization:

Password:*

Password confirmation:*

VPN server address:*

Encryption: **No encrypt** ▼

10. *For connection of PPTP + Dynamic IP or L2TP + Dynamic IP type:* if your ISP has provided the address of the DNS server, in the **IP** section, deselect the **Obtain DNS server addresses automatically** checkbox and fill in the **Primary DNS server** field. Then in the **VPN** section, enter authorization data provided by your ISP (the username (login) in the **Username** field and the password in the **Password** and **Password confirmation** fields), or select the **Without authorization** checkbox if authorization is not required. In the **VPN server address** field, enter the IP or URL address of the PPTP or L2TP authentication server. If your ISP applies encryption, select a needed value from the **Encryption** drop-down list.

IP

Obtain DNS server addresses automatically:

Primary DNS server:*

Secondary DNS server:

Vendor ID:

VPN

Connect automatically:

Username:*

Without authorization:

Password:*

Password confirmation:*

VPN server address:*

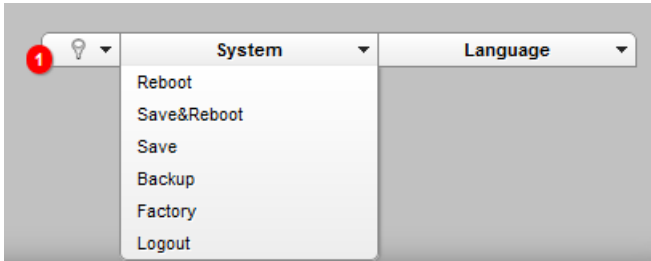
Encryption:

11. If needed, fill in other fields on the page in accordance with data provided by the ISP.
12. Click the **Save** button.

Saving Settings to Non-volatile Memory

In order to avoid losing the new settings upon hardware reboot (accidental or intentional power-off of the device), it is recommended to save the settings to the non-volatile memory of the access point.

Click the **Save&Reboot** line in the top-page menu displayed when the mouse pointer is over the **System** caption.



Wait until the access point is rebooted. Now you can use it to access the Internet or access the web-based interface of the access point to configure additional parameters. For detailed description of every page of the web-based interface, see the “*User Manual*” document (<ftp.dlink.ru/pub/Wireless/DAP-1155/Description/Rev.B/>).

TECHNICAL SUPPORT

You can find software updates and user documentation on our website.

D-Link provides its customers with free support within the product's warranty period.

Customers can contact the technical support group by phone or by e-mail/Internet.

FOR TELEPHONE NUMBERS AND ADDRESSES OF D-LINK OFFICES WORLDWIDE VISIT

<http://www.dlink.com/corporate/worldwideoffices/>