



DAP-1325

N300 Wi-Fi Range Extender

BEFORE YOU BEGIN

Delivery Package

- Extender DAP-1325
- “*Quick Installation Guide*” (brochure).

If any of the items are missing, please contact your reseller.

The “*User Manual*” and “*Quick Installation Guide*” documents are available on D-Link website (see www.dlink.ru).



Using a power supply with different parameters than those indicated on the device will cause damage and void the warranty for this product.

Default Settings

IP address of device	192.168.0.50
Username (login)	admin
Password	admin
Name of wireless network (SSID)	DAP-1325
Network key (PSK password)	see WPS PIN on the barcode label on the back panel of the device

System Requirements and Equipment

- A router enabled to access the Internet.
- A computer with any operating system that supports a web browser.
- A web browser to access the web-based interface of the device:
 - Apple Safari 8 and later
 - Google Chrome 48 and later
 - Microsoft Internet Explorer 10 and later
 - Microsoft Edge 20.10240 and later
 - Mozilla Firefox 44 and later
 - Opera 35 and later.
- A NIC (Ethernet or Wi-Fi adapter) to connect to the extender.
- An 802.11b, g, or n Wi-Fi adapter to create a wireless network.

CONNECTING TO PC

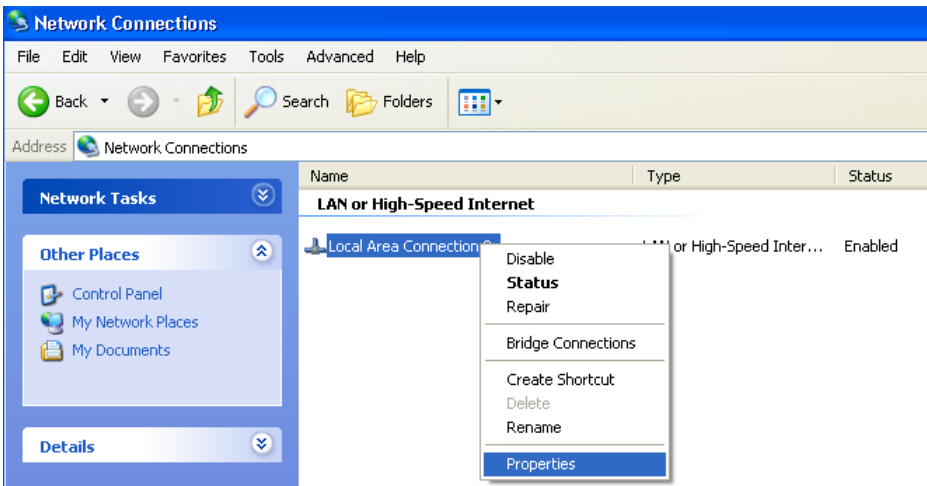
PC with Ethernet Adapter

1. Connect an Ethernet cable between the Ethernet port of the extender and the Ethernet port of your PC.
2. Plug the device into an electrical outlet or power strip.

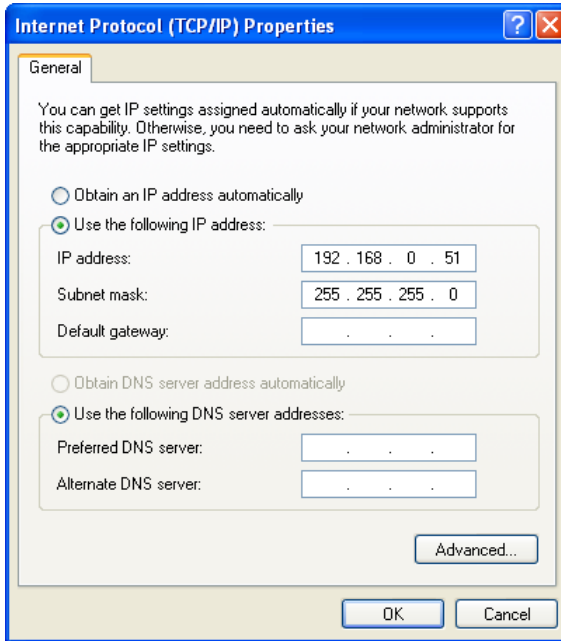
Now you need to configure an IP address for the Ethernet adapter of your PC.

Configuring IP Address in OS Windows XP

1. Click the **Start** button and proceed to the **Control Panel > Network and Internet Connections > Network Connections** window.
2. In the **Network Connections** window, right-click the relevant **Local Area Connection** icon and select the **Properties** line in the menu displayed.



3. In the **Local Area Connection Properties** window, on the **General** tab, select the **Internet Protocol (TCP/IP)** line. Click the **Properties** button.
4. Select the **Use the following IP address** radio button and enter the value **192.168.0.51** in the **IP address** field. The **Subnet mask** field will be filled in automatically. Click the **OK** button.

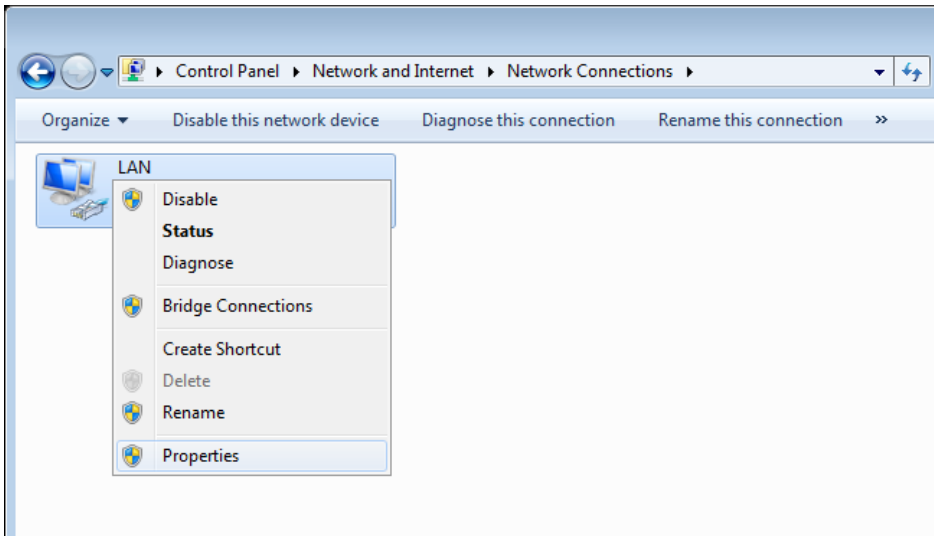


5. Click the **OK** button in the connection properties window.

Now you can connect to the web-based interface of DAP-1325 for configuring all needed parameters. To gain access to an external network (to the Internet), you also need to specify the default gateway and the addresses of DNS servers.

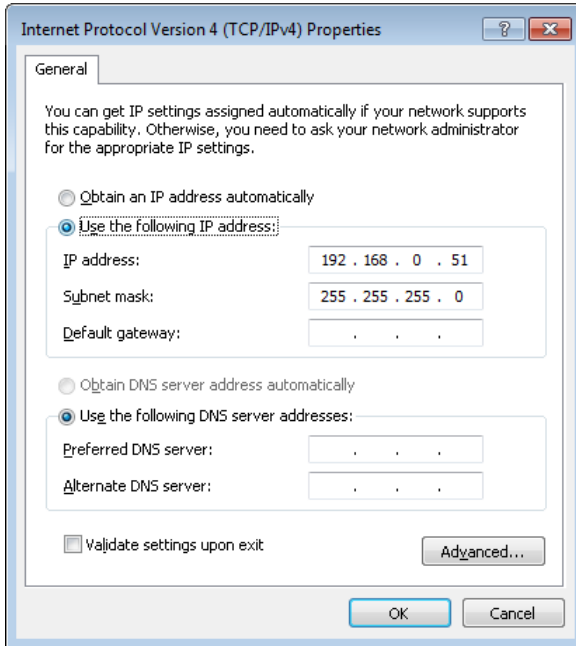
Configuring IP Address in OS Windows 7

1. Click the **Start** button and proceed to the **Control Panel** window.
2. Select the **Network and Sharing Center** section. (If the Control Panel has the category view (the **Category** value is selected from the **View by** drop-down list in the top right corner of the window), choose the **View network status and tasks** line under the **Network and Internet** section.)
3. In the menu located on the left part of the window, select the **Change adapter settings** line.
4. In the opened window, right-click the relevant **Local Area Connection** icon and select the **Properties** line in the menu displayed.



5. In the **Local Area Connection Properties** window, on the **Networking** tab, select the **Internet Protocol Version 4 (TCP/IPv4)** line. Click the **Properties** button.

6. Select the **Use the following IP address** radio button and enter the value **192.168.0.51** in the **IP address** field. The **Subnet mask** field will be filled in automatically. Click the **OK** button.



7. Click the **OK** button in the connection properties window.

Now you can connect to the web-based interface of DAP-1325 for configuring all needed parameters. To gain access to an external network (to the Internet), you also need to specify the default gateway and the addresses of DNS servers.

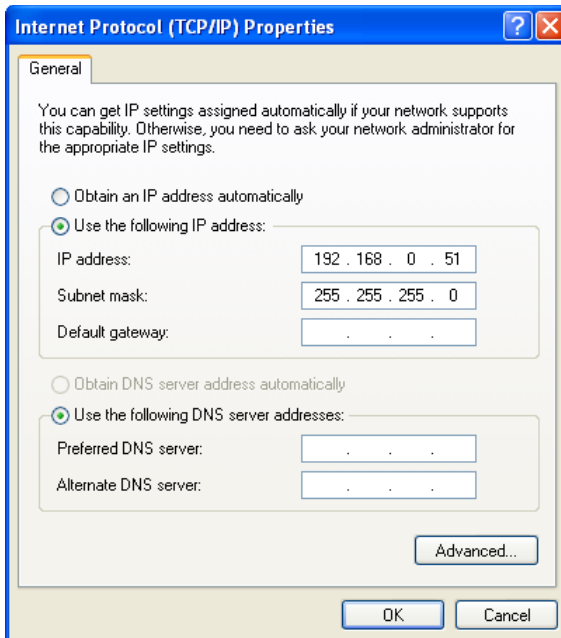
PC with Wi-Fi Adapter

1. Plug the device into an electrical outlet or power strip.
2. Turn on your Wi-Fi adapter. As a rule, modern notebooks with built-in wireless NICs are equipped with a button or switch that turns on/off the wireless adapter (refer to your PC documents). If your PC is equipped with a pluggable wireless NIC, install the software provided with your Wi-Fi adapter.

Now you should configure your Wi-Fi adapter.

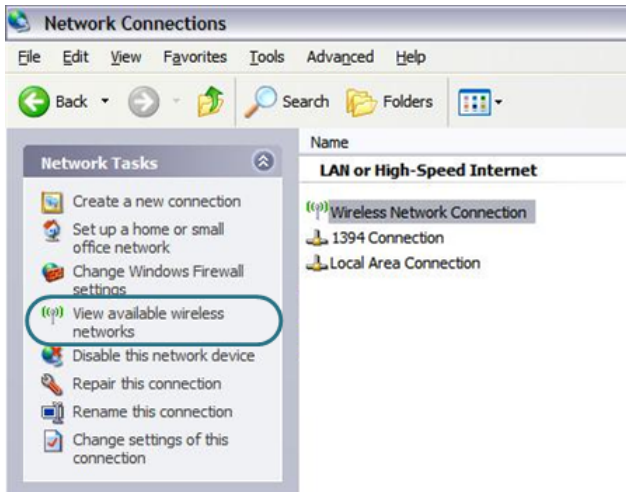
Configuring Wi-Fi Adapter in OS Windows XP

1. Click the **Start** button and proceed to the **Control Panel > Network and Internet Connections > Network Connections** window.
2. In the **Network Connections** window, right-click the relevant **Wireless Network Connection** icon. Make sure that your Wi-Fi adapter is on, then select the **Properties** line in the menu displayed.
3. In the **Wireless Network Connection Properties** window, on the **General** tab, select the **Internet Protocol (TCP/IP)** line. Click the **Properties** button.
4. Select the **Use the following IP address** radio button and enter the value **192.168.0.51** in the **IP address** field. The **Subnet mask** field will be filled in automatically. Click the **OK** button.



5. Click the **OK** button in the connection properties window.

6. Search for available wireless networks.



7. In the opened **Wireless Network Connection** window, select the wireless network **DAP-1325** and click the **Connect** button.
8. In the opened window, enter the network key (see WPS PIN on the barcode label on the back panel of the device) in the **Network key** and **Confirm network key** fields and click the **Connect** button.

After that the **Wireless Network Connection Status** window appears.

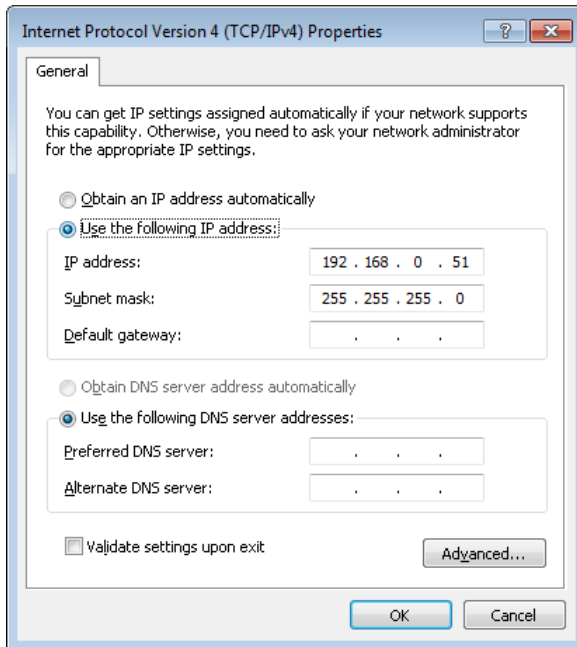
Now you can connect to the web-based interface of DAP-1325 for configuring all needed parameters. To gain access to an external network (to the Internet), you also need to specify the default gateway and the addresses of DNS servers.

! If you perform initial configuration of the extender via Wi-Fi connection, note that immediately after changing the wireless default settings of the extender you will need to reconfigure the wireless connection using the newly specified settings.

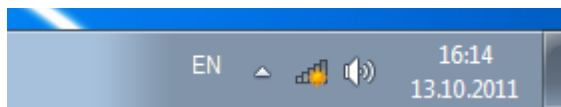
Configuring Wi-Fi Adapter in OS Windows 7

1. Click the **Start** button and proceed to the **Control Panel** window.
2. Select the **Network and Sharing Center** section. (If the Control Panel has the category view (the **Category** value is selected from the **View by** drop-down list in the top right corner of the window), choose the **View network status and tasks** line under the **Network and Internet** section.)
3. In the menu located on the left part of the window, select the **Change adapter settings** line.
4. In the opened window, right-click the relevant **Wireless Network Connection** icon. Make sure that your Wi-Fi adapter is on, then select the **Properties** line in the menu displayed.
5. In the **Wireless Network Connection Properties** window, on the **Networking** tab, select the **Internet Protocol Version 4 (TCP/IPv4)** line. Click the **Properties** button.

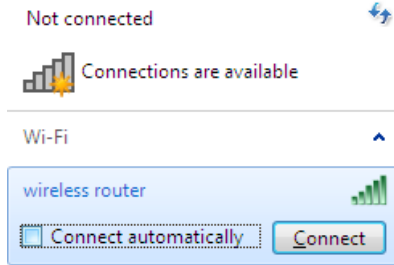
6. Select the **Use the following IP address** radio button and enter the value **192.168.0.51** in the **IP address** field. The **Subnet mask** field will be filled in automatically. Click the **OK** button.



7. Click the **OK** button in the connection properties window.
8. To open the list of available wireless networks, select the icon of the wireless network connection and click the **Connect To** button or left-click the network icon in the notification area located on the right side of the taskbar.



- In the opened window, in the list of available wireless networks, select the wireless network **DAP-1325** and click the **Connect** button.



[Open Network and Sharing Center](#)

- In the opened window, enter the network key (see WPS PIN on the barcode label on the back panel of the device) in the **Security key** field and click the **OK** button.
- Wait for about 20-30 seconds. After the connection is established, the network icon will be displayed as the signal level scale.

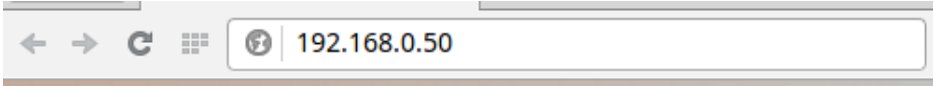
Now you can connect to the web-based interface of DAP-1325 for configuring all needed parameters. To gain access to an external network (to the Internet), you also need to specify the default gateway and the addresses of DNS servers.

! If you perform initial configuration of the access point via Wi-Fi connection, note that immediately after changing the wireless default settings of the access point you will need to reconfigure the wireless connection using the newly specified settings.

CONFIGURING EXTENDER

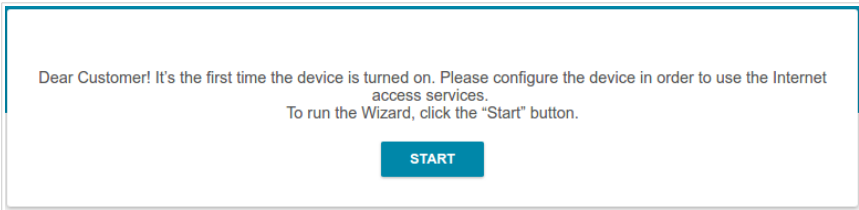
Connecting to Web-based Interface

Start a web browser. In the address bar of the web browser, enter the IP address of the extender (by default, the following IP address is specified: **192.168.0.50**). Press the **Enter** key.

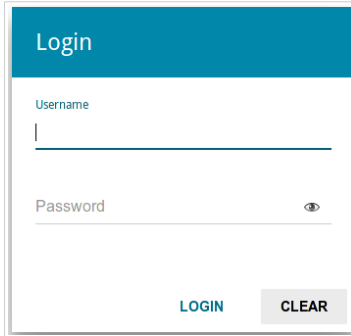


! If the error “*The page cannot be displayed*” (or “*Unable to display the page*”/“*Could not connect to remote server*”) occurs upon connecting to the web-based interface of the extender, make sure that you have properly connected the device to your computer.

If the device has not been configured previously or the default settings have been restored, after access to the web-based interface the Initial Configuration Wizard opens (see the *Initial Configuration Wizard* section, page 17).



If you configured the device previously, after access to the web-based interface the login page opens. Enter the username (**admin**) in the **Username** field and the password you specified in the **Password** field, then click the **LOGIN** button.



The screenshot shows a login form with a teal header containing the word "Login". Below the header, there are two input fields: "Username" and "Password". The "Username" field has a vertical cursor at the beginning. The "Password" field has a small eye icon to its right, indicating a toggle for password visibility. At the bottom of the form, there are two buttons: "LOGIN" and "CLEAR".

The **Summary** page displays general information on the extender and its software.

The screenshot shows the 'Summary' page of the DAP-1325 web-based interface. The page is divided into several sections:

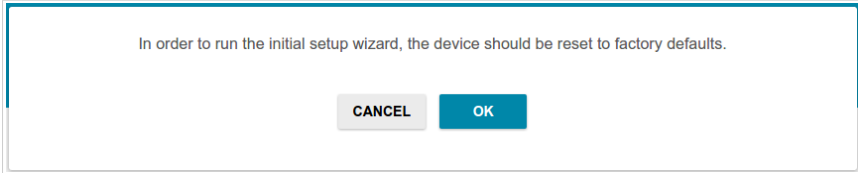
- Device Information:**
 - Model: DAP-1325
 - Hardware revision: A1
 - Firmware version: 3.0.0
 - Build time: Tue May 2 16:31:17 MSK 2017
 - Vendor: D-Link Russia
 - Support: support@dlink.ru
 - Summary: Root filesystem image for DAP-1325
 - Uptime: 0d 00:21:46
- LAN:**
 - LAN IPv4: 192.168.0.50
 - LAN IPv6: fd01::50/64
 - Wireless connections: -
 - Wired connections: 1
- 2.4 GHz Access Point:**
 - Broadcasting: On (indicated by a green dot)
 - Network name (SSID): DAP-1325-1350
 - Security: WPA2-PSK (indicated by a lock icon)
- CPU:**
 - CPU load: 7% (indicated by a green progress bar)
- Memory:**
 - Used: 87% (24.72 Mbyte) (indicated by a red progress bar)
 - Free: 3.61 Mbyte
 - Buffered: 3.21 Mbyte
 - Total: 28.33 Mbyte

The web-based interface of the extender is bilingual (English/Russian). You can select the needed language upon the initial configuration of the web-based interface of the device or in the **System / Configuration** section of the menu.

Other settings of the extender are available in the menu in the left part of the page. Go to the relevant section and select the needed page or run the wizard in the **Initial Configuration** section.

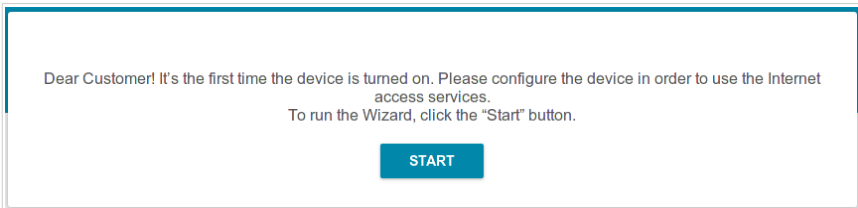
Initial Configuration Wizard

In order to start the Initial Configuration Wizard manually, go to the **Initial Configuration** section.

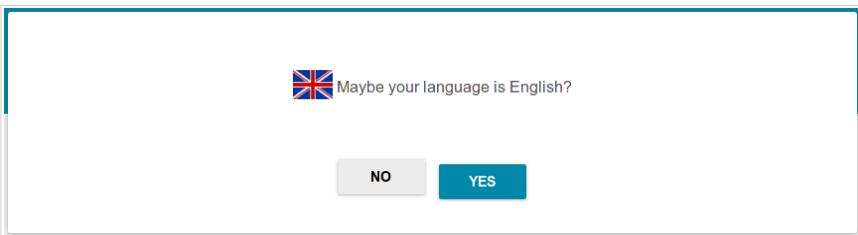


Click the **OK** button and wait until the factory default settings are restored. Then click the **START** button.

If the device has not been configured previously or the default settings have been restored, the Initial Configuration Wizard starts automatically upon access to the web-based interface or upon opening a web site on the Internet.



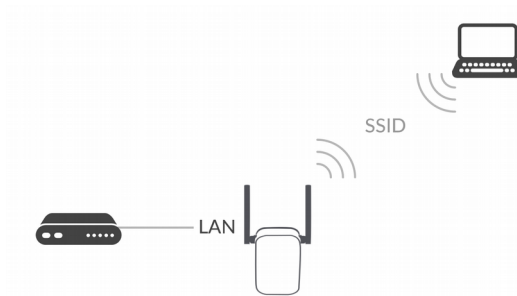
1. Click **YES** in order to leave the current language of the web-based interface or click **NO** to select the other language.



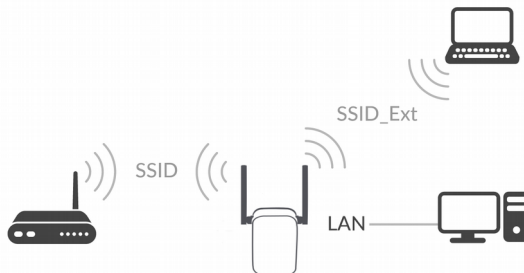
2. On the next page, click the **CONTINUE** button.

Selecting Operation Mode

In order to connect your device to a wired router for adding a wireless network to the existing local network, on the **Device mode** page, from the **Connection method** list, select the **Wired connection** value. In this mode you can change the LAN IP address, set your own settings for the wireless network and set your own password for access to the web-based interface of the device.



In order to connect your device to a wireless router for extending the range of the existing wireless network, on the **Device mode** page, from the **Connection method** list, select the **Wi-Fi** value. Then from the **Work mode** list select the **Repeater** value. In this mode you can change the LAN IP address, connect your device to another access point, set your own settings for the wireless network, and set your own password for access to the web-based interface of the device.



In order to let a wired PC connected to your device access the network of a wireless router, on the **Device mode** page, from the **Connection method** list, select the **Wi-Fi** value. Then from the **Work mode** list select the **Client** value. In this mode you can change the LAN IP address, connect your device to another access point and set your own password for access to the web-based interface of the device.




When the operation mode is selected, click the **NEXT** button.

Changing LAN IPv4 Address

This configuration step is available for the **Access point**, **Repeater**, and **Client** modes.

1. If the LAN IPv4 address of DAP-1325 coincides with the LAN IPv4 address of the router to which it connects, then set another LAN IPv4 address of DAP-1325 in the **IP address** field.

LAN

 To avoid conflict of IP addresses, please change the LAN IP address of your router.

IP address*
192.168.0.50

Netmask*
255.255.255.0

Gateway IP address

2. Click the **NEXT** button.

Wi-Fi Client

This configuration step is available for the **Repeater** and **Client** modes.

1. On the **Wi-Fi client** page, in the **Wireless Networks** section, select the network to which you want to connect. When you select a network, the **Network name (SSID)** and **BSSID** fields are filled in automatically.

If you cannot find the needed network in the list, click the **Update list** button.

2. If a password is needed to connect to the selected network, fill in the relevant field.

Wi-Fi Client

Connecting to network

Select network from list

Network name (SSID)

BSSID

Wireless Networks Update list

Network name (SSID)	Security settings	Channel	Frequency
Smart	[WPA2-PSK] [AES]	1	2.4 GHz

If you connect to a hidden network, from the **Connecting to network** list select the **Connect to hidden network** value. Enter the network name to the **Network name (SSID)** field. Then select a needed value from the **Network authentication** list and then, if needed, enter the password in the relevant field.

3. Click the **NEXT** button.

Configuring Wireless Network

This configuration step is available for the **Access point** and **Repeater** modes.

1. On the **Wireless Network 2.4 GHz** page, in the **Network name** field, specify your own name for the wireless network or leave the value suggested by the extender.
2. In the **Password** field, specify your own password for access to the wireless network or leave the value suggested by the extender (WPS PIN of the device, see the barcode label).
3. You can restore the parameters of the wireless network specified before resetting to factory defaults. To do this, click the **RESTORE** button.

Wireless Network 2.4 GHz

Enable

Broadcast wireless network 2.4 GHz

Disabling broadcast does not influence the ability to connect to another Wi-Fi network as a client.

Network name*

Open network

Password*

12345670

< BACK NEXT >

4. Click the **NEXT** button.

Changing Web-based Interface Password

On this page you should change the default administrator password. You may set any password except **admin**. Use digits, Latin letters (uppercase and/or lowercase), and other characters available in the US keyboard layout.¹

Changing web-based interface password

For security reasons, please change the password used to access the device's settings.

Password

< BACK NEXT >

! Remember or write down the new password for the administrator account. In case of losing the new password, you can access the settings of the extender only after restoring the factory default settings via the hardware **RESET** button. This procedure wipes out all settings that you have configured for your extender.

Click the **NEXT** button.

On the next page, check all the settings you have just specified.

Also you can save a text file with parameters set by the Wizard to your PC. To do this, click the **SAVE CONFIGURATION FILE** button and follow the dialog box appeared.

To finish the Wizard, click the **APPLY** button.

¹ 0-9, A-Z, a-z, space, !"#\$%&'()*+,-./:;<=>?@[\] ^ _ ` { } ~.

SPECIFICATIONS*

Hardware	
Processor	<ul style="list-style-type: none"> MT7628NN (580MHz)
RAM	<ul style="list-style-type: none"> 64MB, DDR2 SDRAM
Flash	<ul style="list-style-type: none"> 8MB, SPI
Interfaces	<ul style="list-style-type: none"> 10/100BASE-TX LAN port
LEDs	<ul style="list-style-type: none"> POWER/WPS Wi-Fi Signal Strength
Buttons	<ul style="list-style-type: none"> WPS button to set up wireless connection RESET button to restore factory default settings
Antenna	<ul style="list-style-type: none"> Two external non-detachable antennas (2 dBi)
MIMO	<ul style="list-style-type: none"> 2 x 2
Power connector	<ul style="list-style-type: none"> CEE 7/16 plug for AC power supply

Software	
Network functions	<ul style="list-style-type: none"> DHCP server DNS relay
Firewall functions	<ul style="list-style-type: none"> MAC filter
Management	<ul style="list-style-type: none"> Local and remote access to settings through TELNET/WEB (HTTP/HTTPS) Bilingual web-based interface for configuration and management (Russian/English) Firmware update via web-based interface Automatic notification on new firmware version Saving/restoring configuration to/from file Support of logging to remote host Automatic synchronization of system time with NTP server and manual time/date setup Ping utility Traceroute utility

* The device features are subject to change without notice. For the latest versions of the firmware and relevant documentation, visit www.dlink.ru.

Wireless Module Parameters	
Standards	<ul style="list-style-type: none"> IEEE 802.11b/g/n
Frequency range	<ul style="list-style-type: none"> 2400 ~ 2483.5MHz
Wireless connection security	<ul style="list-style-type: none"> WEP WPA/WPA2 (Personal/Enterprise) MAC filter WPS (PBC/PIN)
Advanced functions	<ul style="list-style-type: none"> Support of client mode WMM (Wi-Fi QoS) Information on connected Wi-Fi clients Advanced settings Support of MBSSID
Wireless connection rate	<ul style="list-style-type: none"> IEEE 802.11b: 1, 2, 5.5, and 11Mbps IEEE 802.11g: 6, 9, 12, 18, 24, 36, 48, and 54Mbps IEEE 802.11n: from 6.5 to 300Mbps (from MCS0 to MCS15)
Transmitter output power <i>The maximum value of the transmitter output power depends upon the radio frequency regulations applied in your country</i>	<ul style="list-style-type: none"> 802.11n (typical at room temperature 25 °C) 15dBm (+/-1.5dB)
Receiver sensitivity	<ul style="list-style-type: none"> 802.11n (typical at PER = 10% (1000-byte PDUs) at room temperature 25 °C) HT20 -82dBm at MCS0/8 -79dBm at MCS1/9 -77dBm at MCS2/10 -74dBm at MCS3/11 -70dBm at MCS4/12 -66dBm at MCS5/13 -65dBm at MCS6/14 -64dBm at MCS7/15 HT40 -79dBm at MCS0/8 -76dBm at MCS1/9 -74dBm at MCS2/10 -71dBm at MCS3/11 -67dBm at MCS4/12 -63dBm at MCS5/13 -62dBm at MCS6/14 -61dBm at MCS7/15

Physical Parameters

Dimensions (L x W x H)	· 51 x 49 x 98 mm (2 x 1.91 x 3.85 in)
Weight	· 97 g (0.21 lb)

Operating Environment

Power	· Input: 110 to 240 V AC, 50/60 Hz
Temperature	· Operating: from 0 to 40 °C · Storage: from -20 to 70 °C
Humidity	· Operating: from 10% to 90% (non-condensing) · Storage: from 5% to 90% (non-condensing)

SAFETY RULES AND CONDITIONS

Please carefully read this section before installation and connection of the device. Make sure that the device is not damaged. The device should be used only as intended in accordance with the documents.

The device is intended for use in dry, clean, dust-free, and well ventilated areas with normal humidity away from strong heat sources. Do not use the device outdoors or in the areas with high humidity. Do not place foreign objects on the device. Do not obstruct the ventilation openings of the device. The environmental temperature near the device and the temperature inside the device's cover should be within the range from 0 °C to +40 °C.

Plug the device only into working electrical outlets with parameters indicated on the device.

Do not open the cover of the device! Unplug the device before dusting and cleaning. Use a damp cloth to clean the device. Do not use liquid/aerosol cleaners or magnetic/static cleaning devices. Prevent moisture getting into the device.

The service life of the device is 2 years.

TECHNICAL SUPPORT

You can find software updates and user documentation on our website.

D-Link provides its customers with free support within the product's warranty period.

Customers can contact the technical support group by phone or by e-mail/Internet.

FOR TELEPHONE NUMBERS AND ADDRESSES OF D-LINK OFFICES WORLDWIDE VISIT

<http://www.dlink.com/corporate/worldwideoffices/>