



Selectable Dual Band – 2.4GHz and 5GHz provides blazing speeds and low interference



Up to 450 Mbps for HD Video



Access point capability for adding wireless to a wired network

Wireless N450 MediaBridge®/Access Point

DAP-1533

What it does

Whether you need high bandwidth for your Ethernet-ready devices in your entertainment system or you want to add wireless capability to your existing wired network, the Wireless N450 MediaBridge®/Access Point is perfect for you.

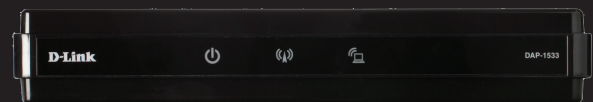
Wireless Bridge Mode

Four Gigabit ports let you connect wired devices such as media players, game consoles, and Network Attached Storage (NAS) to your existing wireless network, instantly giving them blazing wired speeds. Plus, by connecting a second Wireless N450 MediaBridge®/Access Point, you add a powerful wireless bridge with speeds of up to 450 Mbps.¹

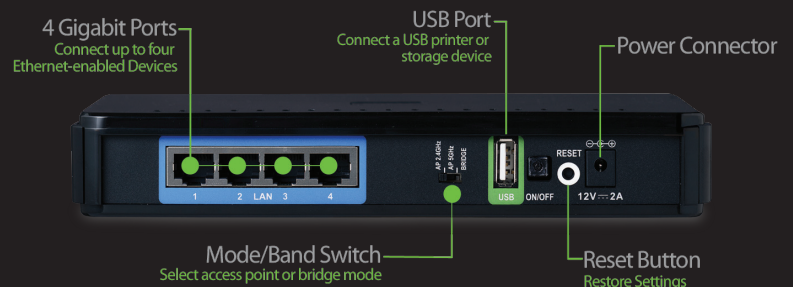
Access Point Mode

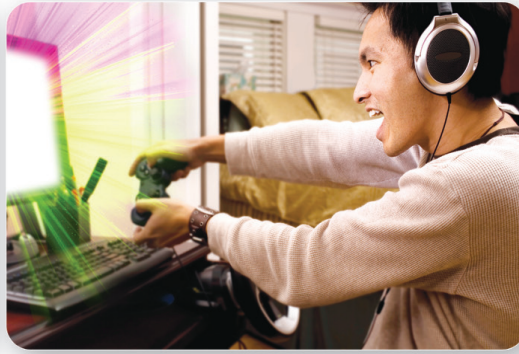
The Wireless N450 MediaBridge®/Access Point features selectable dual band – 2.4 GHz and 5 GHz, which lets you extend a network and connect devices. Connect the DAP-1533 to an existing wired network to make it wireless. Stream HD videos to the far corners of your home or play online games without any lag.

Front



Back





Features

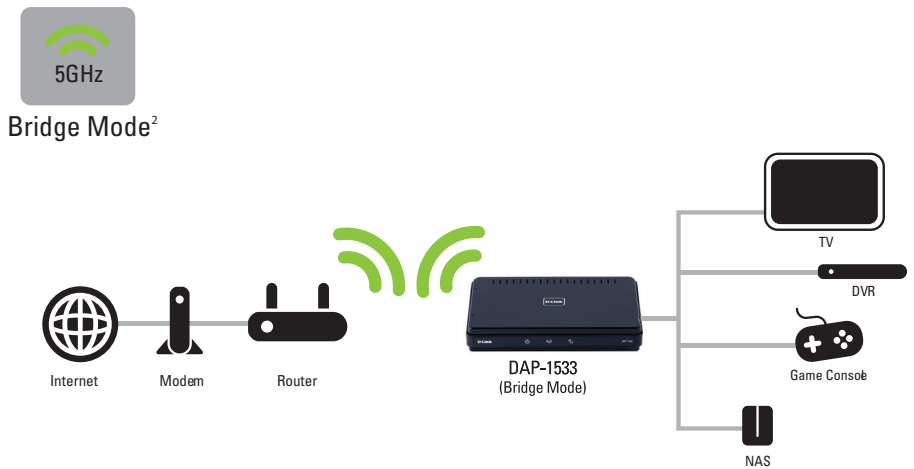
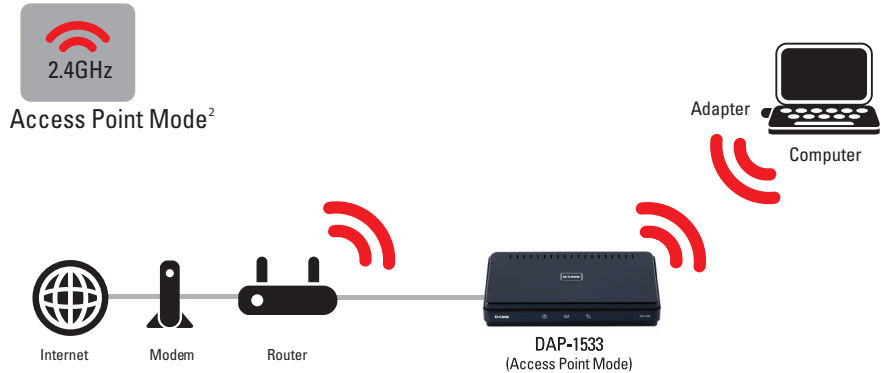
- + Up to 450 Mbps¹
- + Selectable Dual band 2.4 GHz or 5 GHz
- + 4 Gigabit Ethernet Ports
- + Works as a Wireless Bridge or Access Point
- + IEEE 802.11n/g/a Compliant
- + USB 2.0 with SharePort™
- + One-Touch AP Configuration
- + Built-in Network QoS
- + Supports Secure Wireless Encryption Using WPA™ or WPA2™ Security
- + WPS (Wi-Fi® Protected Setup™) for simple Push-Button Wireless Network Configuration
- + Supports IPv6

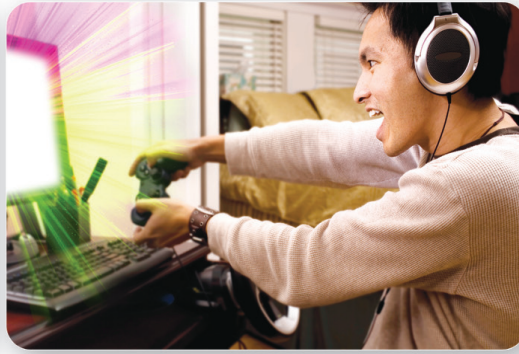
Think Green

D-Link Green™ devices are about providing eco-friendly alternatives without compromising performance. They are designed to help conserve energy, protect our environment from harmful substances, and reduce waste by using recyclable packaging. To learn more, visit www.dlinkgreen.com.

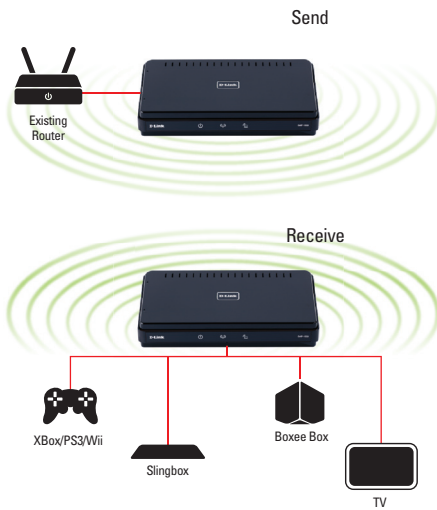
Protecting the environment

- + Complies with the European Union's RoHS directive that restricts the use of certain hazardous materials
- + Uses soy ink and recyclable packaging to help reduce waste that goes into the environment





With a second DAP-1533, create a powerful wireless bridge to connect up to four devices in your entertainment center at up to 450 Mbps.



In addition, with an existing router and the DAP-1533 Wireless N450 MediaBridge®/ Access Point in this box, create a bridge to an entertainment center and connect up to four devices.

Technical Specifications

STANDARDS

- IEEE 802.11n
- IEEE 802.11g
- IEEE 802.11a
- IEEE 802.3
- IEEE 803.u
- IEEE 802.3ab

PHYSICAL INTERFACE

- 4 10/100/1000 Gigabit Ethernet Ports
- WPS Push Button (for Wi-Fi Protected Setup™)
- Mode Switch
 - 2.4 GHz Access Point
 - 5 GHz Access Point
 - Bridge
- USB 2.0 Port

OPERATION MODES

- 2.4 GHz Access Point
- 5 GHz Access Point
- Bridge

WIRELESS SECURITY

- Wi-Fi Protected Access (WPA/WPA2)
- WPS™

LEDs

- Power
- AP
- Bridge

CERTIFICATIONS

- FCC
- IC
- CE
- C-Tick
- Wi-Fi
- IPv6

OPERATING TEMPERATURE

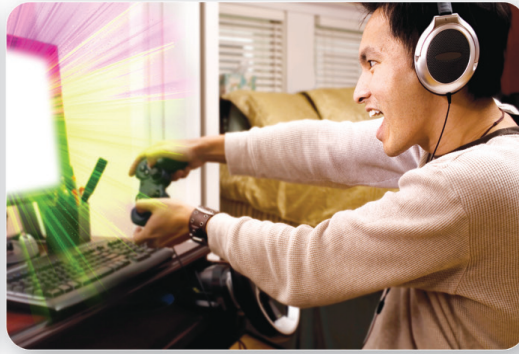
- 0 to 40 °C (30 to 104 °F)

HUMIDITY

- Operating: 10 to 90 % Non-condensing

DIMENSIONS (L x W x H)

- 198 x 120.5 x 32 mm
- (7.8 x 4.7 x 1.3 inches)



Technical Specifications (cont.)

Package Contents

- + Wireless N450 Media Bridge®/Access Point
- + Ethernet Cable
- + Power Adapter
- + Quick Installation Guide
- + CD-ROM with Product Documentation

System Requirements

Computer with:

- + Network Interface Card
- + CD-ROM Drive
- + Windows® 7¹, Vista®², XP SP3³, or Mac OS® X(v10.4)⁴
- + Internet Explorer® 7 or Mozilla® FireFox® 3.0 or higher

For Internet Access:

- + Cable or DSL Modem
- + Subscription with an Internet Service Provider (ISP)
- + Router

Optional Products

For optimal wireless performance, use with:

- + Wireless N750 Dual Band Router (DIR-835)

DEVICE MANAGEMENT

- Integrated Wireless Security Wizard and Wireless Protected Setup (WPS) support
- Windows Connect Now (WCN) support
- Web-based management using Internet Explorer 6 or higher, or other Java-enabled browser
- Online firmware update check
- Multi-language support



¹ Maximum wireless signal rate derived from IEEE Standard 802.11 specifications. Actual data throughput will vary. Network conditions and environmental factors, including volume of network traffic, building materials and construction, and network overhead, lower actual data throughput rate. Environmental factors will adversely affect wireless signal range. Wireless range and speed rates are D-Link RELATIVE performance measurements based on the wireless range and speed rates of a standard Wireless G product from D-Link. Maximum throughput based on D-Link Wireless N devices.

² Access Point mode can also be operated at 5 GHz. Bridge mode can also be operated at 2.4 GHz.

³ Computer must adhere to Microsoft's recommended System Requirements.

⁴ The software included with this product is not Mac-compatible.