



Install Guide

DWL-8200AP **Managed Dualband Access Point**

System Requirements

Minimum System Requirements:

- CD-ROM Drive
- Computers with Windows®, Macintosh®, or Linux-based operating systems
- Installed Ethernet Adapter
- Internet Explorer version 6.0 or Netscape Navigator™ version 7.0 and above

Package Contents



DWL-8200AP
Managed Dualband Access Point



Power over Ethernet base unit



Ethernet Cable
(CAT5 UTP/Straight Through)



CD-ROM
with Manual



Mounting Plate



Power Cord

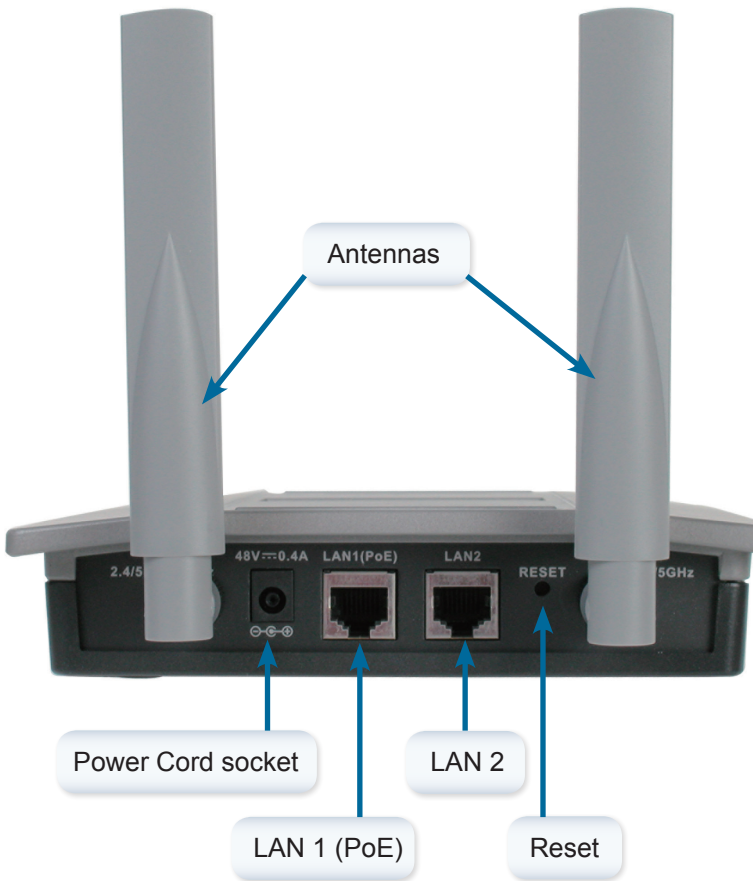


Power Adapter-DC 48V, 0.4A

Note: Using a power supply with a different voltage than the one included with the DWL-8200AP will cause damage and void the warranty for this product.

If any of the above items are missing, please contact your reseller.

Installing the Hardware

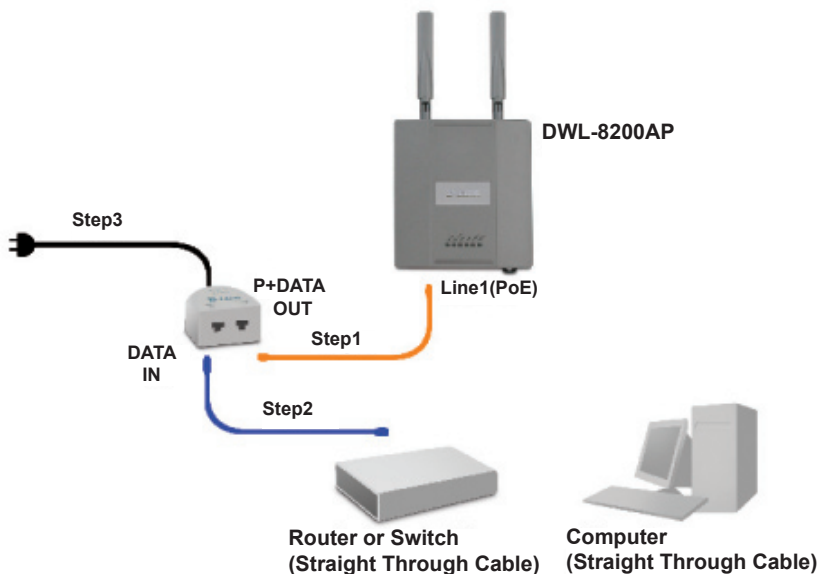


Step 1

Connect one end of an Ethernet cable (included with your package) to the LAN 1 (PoE) port on the **DWL-8200AP**, and the other end of the Ethernet cable to the port labeled P+DATA OUT on the PoE base unit.

Step 2

Connect another Ethernet cable from the DATA IN port on the PoE base unit to your router/switch or to a PC.

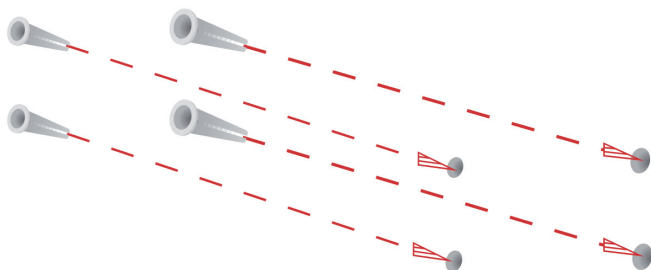


Step 3

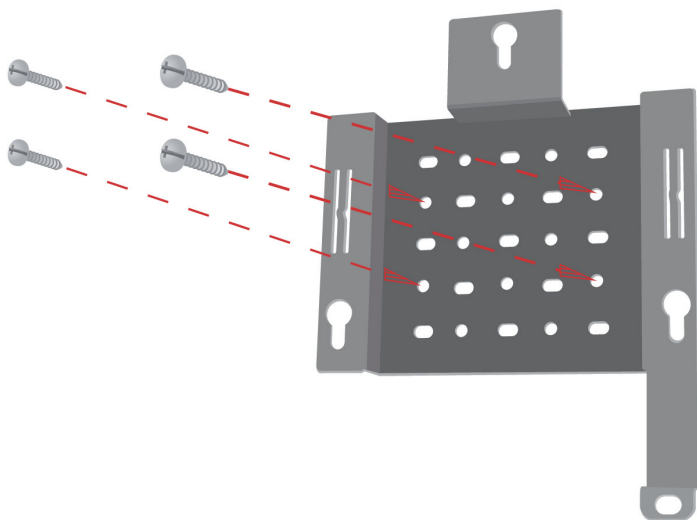
Attach the power adapter to the connector labeled POWER IN on the PoE base unit. Attach the power cord to the power adapter and into an electrical outlet.

Mounting Plate Assembly

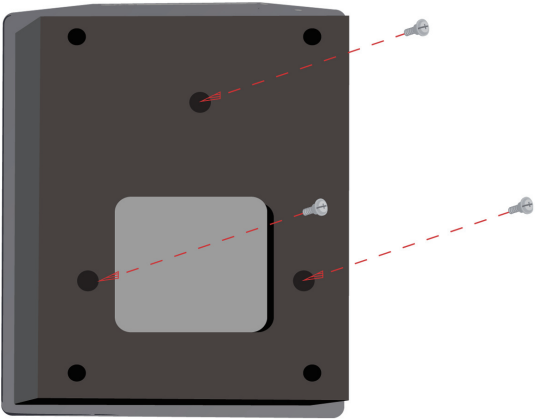
Step 1: Insert provided wall anchors in the wall where the mounting plate will be attached.



Step 2: Use the provided screws to secure the mounting plate on the wall.



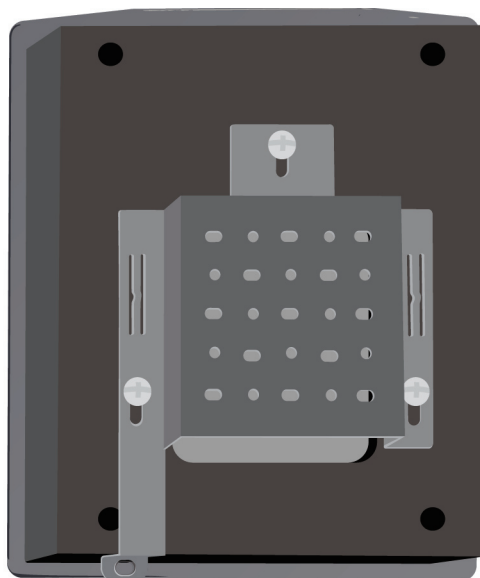
Step 3: Attach the remaining screws securely to the back of the DWL-8200AP.



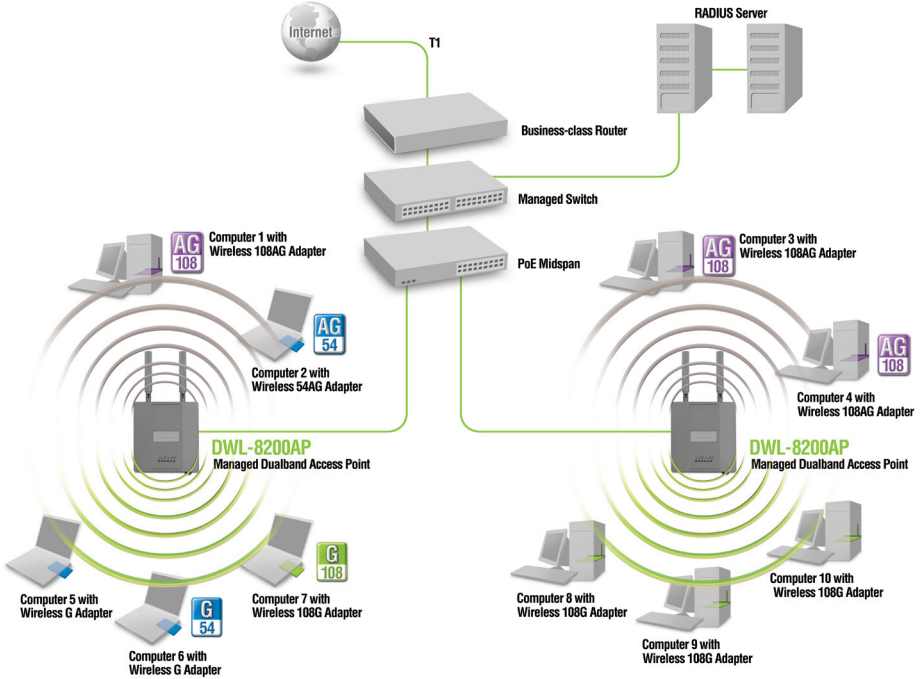
Step 4: Attach the DWL-8200AP to the mounting plate.



Step 5: Slide the DWL-8200AP down into the grooves on the mounting plate to secure it to the plate.



Your Setup is Complete



* Maximum Wireless signal rate derived from IEEE Standard 802.11a and 802.11g specifications. Actual data throughput will vary. Network conditions and environmental factors, including volume of network traffic, building materials and construction, and network overhead lower actual data throughput rate.

Technical Support

You can find software updates and user documentation on the D-Link website.

Tech Support for customers in

Australia:

Tel: 1300-766-868

24/7(24Hrs, 7days a week) technical support

<http://www.dlink.com.au>

e-mail: support@dlink.com.au

India:

Tel: 1800-222-002

9.00 AM to 9.00 PM. All days

<http://www.dlink.co.in/support/productsupport.aspx>

Indonesia, Malaysia, Singapore and Thailand:

Tel: +62-21-5731610 (Indonesia)

Tel: 1800-882-880 (Malaysia)

Tel: +65 6501 4200 (Singapore)

Tel: +66-2-719-8978/9 (Thailand)

24/7, for English Support Only

<http://www.dlink.com.sg/support/>

e-mail: support@dlink.com.sg

Korea:

Tel: +82-2-2028-1815

Monday to Friday 9:00am to 6:00pm

<http://www.d-link.co.kr>

e-mail: arthur@d-link.co.kr

New Zealand:

Tel: 0800-900-900

24/7(24Hrs, 7days a week) technical support

<http://www.dlink.co.nz>

e-mail: support@dlink.co.nz

D-Link®
Building Networks for People

Technical Support

You can find software updates and user documentation on the D-Link website.

Tech Support for customers in

Egypt:

Tel: +202-2919035 or +202-2919047
Sunday to Thursday 9:00am to 5:00pm
<http://support.dlink-me.com>
Email: support.eg@dlink-me.com

Iran:

Te: +98-21-88880918,19
Saturday to Thursday 9:00am to 5:00pm
<http://support.dlink-me.com>
Email : support.ir@dlink-me.com & support@dlink.ir

Israel:

Magshimim 20 St., Matalon center,
Petach Tikva, Israel 49348
Consumer support line: 03-9212886
Business support line: 03-9212608

Pakistan:

Tel: +92-21-4548158 or +92-21-4548310
Monday to Friday 10:00am to 6:00pm
<http://support.dlink-me.com>
E-mail: zkashif@dlink-me.com

South Africa and Sub Sahara Region:

Tel: +27-12-665-2165
08600 DLINK (for South Africa only)
Monday to Friday 8:30am to 9:00pm South Africa Time
<http://www.d-link.co.za>

Turkey:

Tel: +90-212-2895659
Monday to Friday 9:00am to 6:00pm
<http://www.dlink.com.tr>
e-mail: turkiye@dlink-me.com
e-mail: support@d-link.co.za

U.A.E and North Africa:

Tel: +971-4-4278127 (U.A.E)
Sunday to Thursday 9.00AM to 6.00PM GMT+4
Web: <http://www.dlink-me.com>
E-mail: support.me@dlink-me.com

Saudi ARABIA (KSA):

Telephone : +966 01 217 0008
Facsimile : +966 01 217 0009
e-mail: Support.sa@dlink-me.com
Saturday to Wednesday 9.30AM to 6.30PM
Thursdays 9.30AM to 2.00 PM

D-Link®
Building Networks for People



■ ■ Руководство по установке

DWL-8200AP
управляемая двухдиапазонная точка доступа

Системные требования:

Минимальные системные требования:

- Привод CD-ROM
- Компьютеры под управлением операционных систем семейств Windows®, Macintosh®, или Linux
- Установленный Ethernet-адаптер. Internet Explorer версии 6.0 или Netscape Navigator™ версии 7.0 или выше

Содержимое комплекта поставки:



**DWL-8200AP управляемая
двухдиапазонная точка доступа**



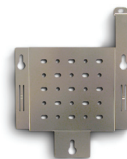
**Базовый блок Power over
Ethernet**



**Кабель Ethernet
(UTP категории 5/ прямой)**



**CD-ROM, содержащий
руководство пользователя**



Монтажная пластина



Шнур питания

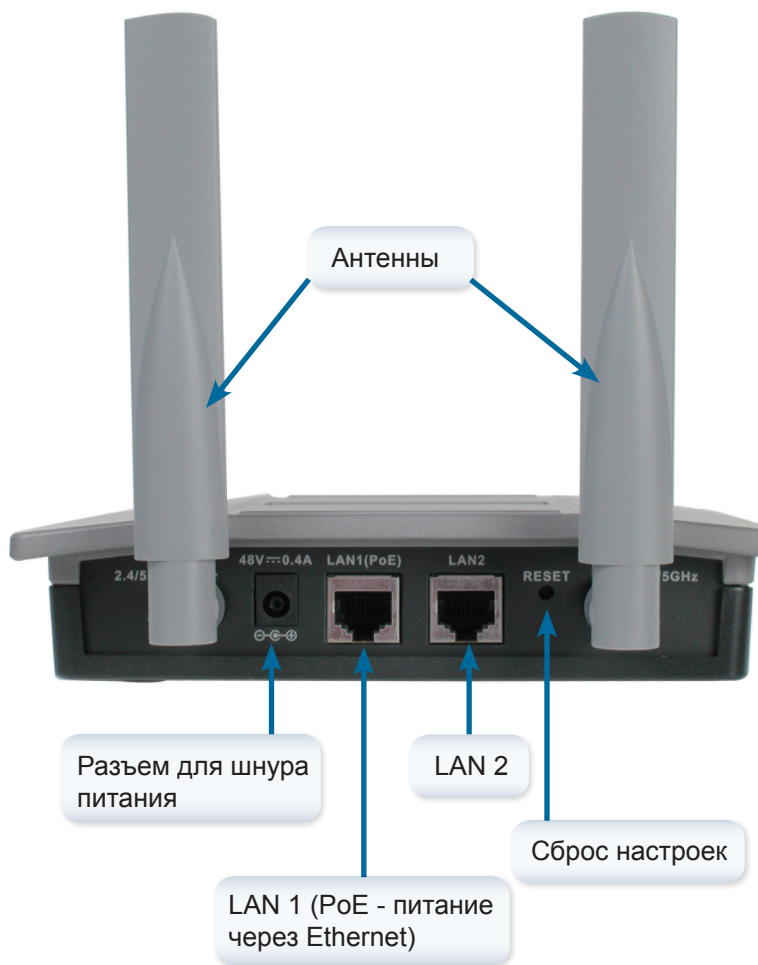


**Адаптер питания 48В
переменного тока, 0,4 А**

Использование источника питания с другими характеристиками может привести к повреждению устройства и аннулированию гарантийных обязательств.

***Если какой-либо из указанных предметов отсутствует, пожалуйста,
обратитесь к вашему поставщику.***

Установка устройства

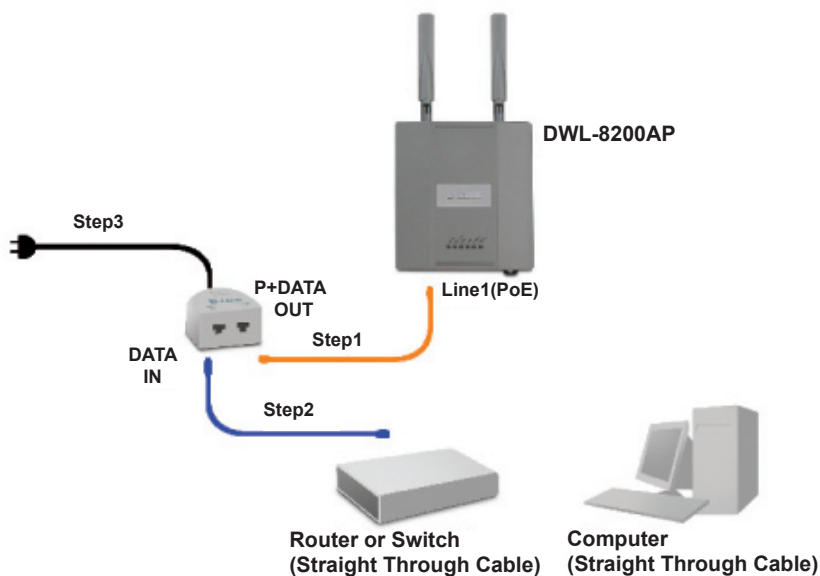


Шаг 1

Подключите один конец кабеля Ethernet (входит в комплект поставки) к порту LAN 1 (PoE) устройства **DWL-8200AP**, а другой конец Ethernet-кабеля к порту P+DATA OUT базового блока PoE.

Шаг 2

Подключите другой Ethernet-кабель от порта DATA IN базового блока PoE к маршрутизатору, коммутатору или к компьютеру.

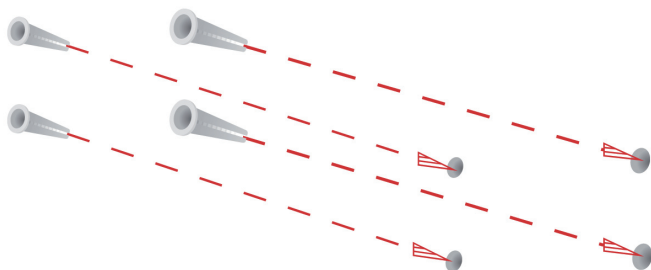


Шаг 3

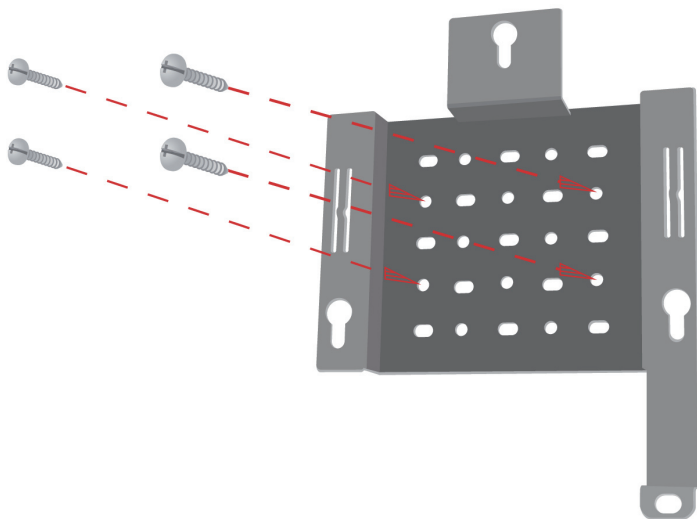
Подключите адаптер питания к разъему, обозначенному как **POWER IN** на базовом блоке PoE. Подключите шнур питания к блоку питания и к сети переменного тока.

Использование Мастера установки

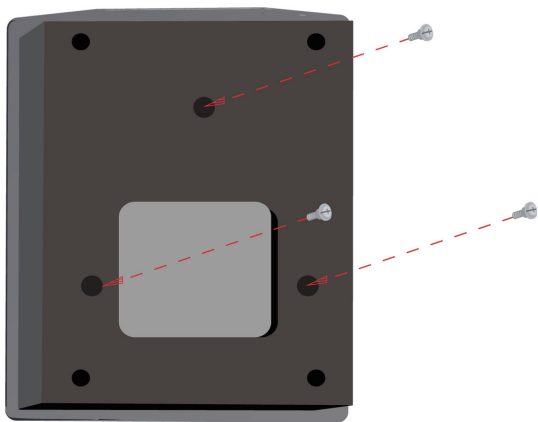
Шаг 1: Забейте дюбели в стену, где будет установлена крепежная пластина.



Шаг 2: С помощью болтов, входящих в поставку, прикрепите крепежную пластину к стене.



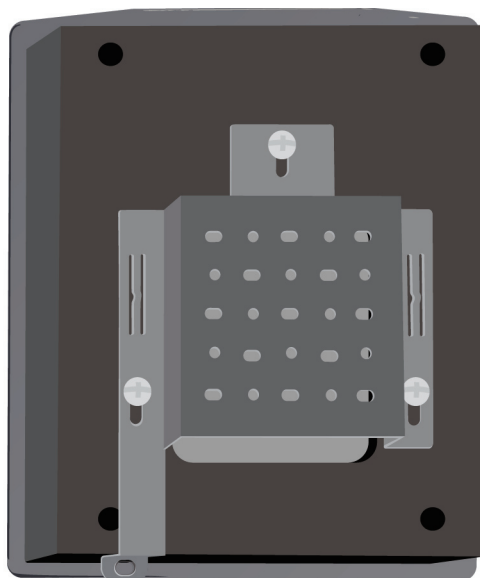
Шаг 3: Оставшиеся болты надежно закрепите к задней панели DWL-8200AP.



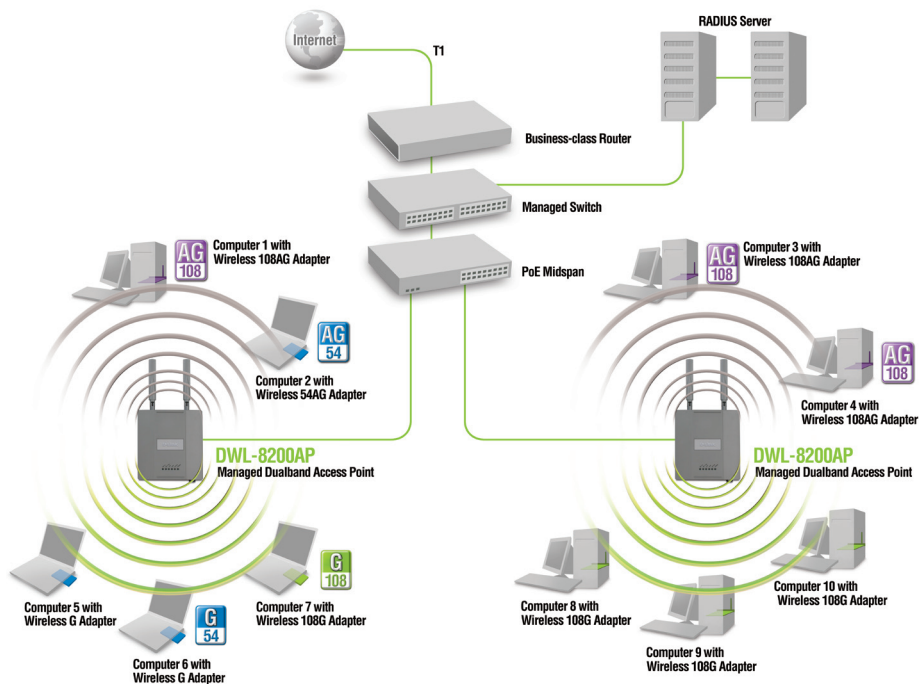
Шаг 4: Закрепите DWL-8200AP к крепежной плате.



Шаг 5: Плавно направьте DWL-8200AP вниз в пазы на крепежной плате для безопасности этой платы.



Установка завершена!



*Максимальная скорость беспроводного соединения определена спецификациями стандартов IEEE 802.11a и 802.11g. Реальная пропускная способность будет другой. Условия, в которых работает сеть, а так же факторы окружающей среды, включая объем сетевого трафика, устройство зданий и материалы, из которых они состоят, а так же потери пакетов в сети снижают ее пропускную способность.

Техническая поддержка

Обновления программного обеспечения и документация доступны на Интернет-сайте D-Link.

D-Link предоставляет бесплатную поддержку для клиентов в течение гарантийного срока.

Клиенты могут обратиться в группу технической поддержки D-Link по телефону или через Интернет.

Техническая поддержка D-Link:

+7(495) 744-00-99

Техническая поддержка через Интернет

<http://www.dlink.ru>

e-mail: support@dlink.ru

D-Link®
Building Networks for People

Notes



Guía de instalación

DWL-8200AP
Managed Dualband Access Point

Requerimientos del Sistema:

Requerimientos Mínimos del Sistema:

- Unidad de CD-ROM
- Computadores con Windows[®], Macintosh[®], o Linux
- Interfaz Ethernet
- Internet Explorer versión 6.0 o Netscape Navigator[™] versión 7.0 o superior

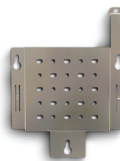
Contenido del Paquete



**DWL-8200AP Managed Dualband
Access Point**



CD-ROM con Manual



Placa de Montaje



Unidad Power over Ethernet



Cable de Energía



Cable Ethernet (CAT5 UTP)

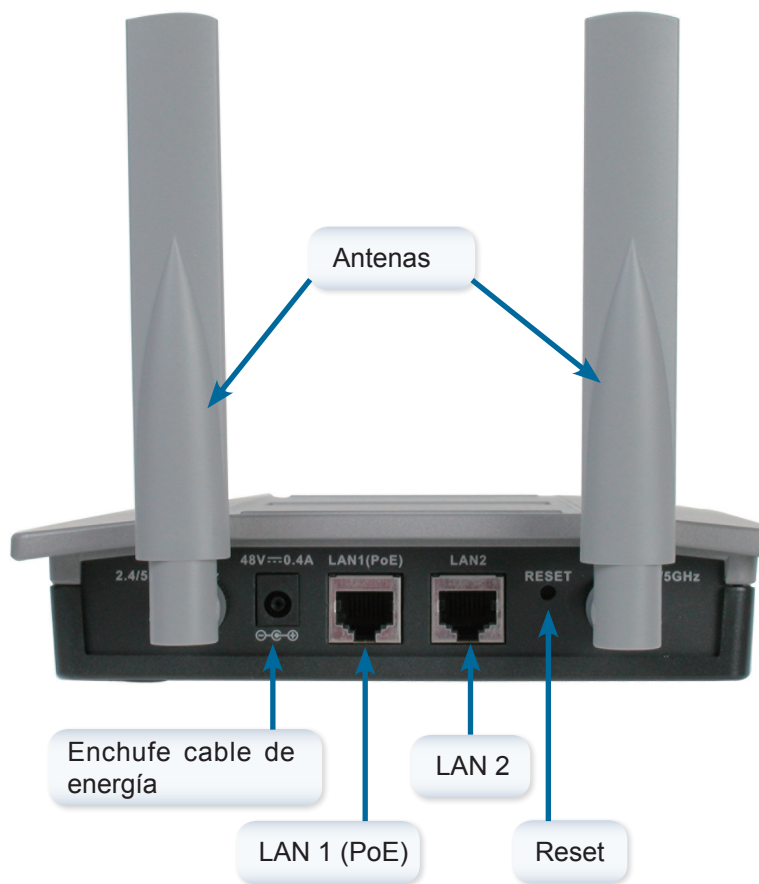


Fuente de Poder DC -48V, 0,4A.

Usar una fuente de poder con un voltaje diferente dañará el producto, anulándose la garantía.

Si falta cualquiera de los ítemes de arriba, por favor contáctese con su vendedor.

Instalando el equipo

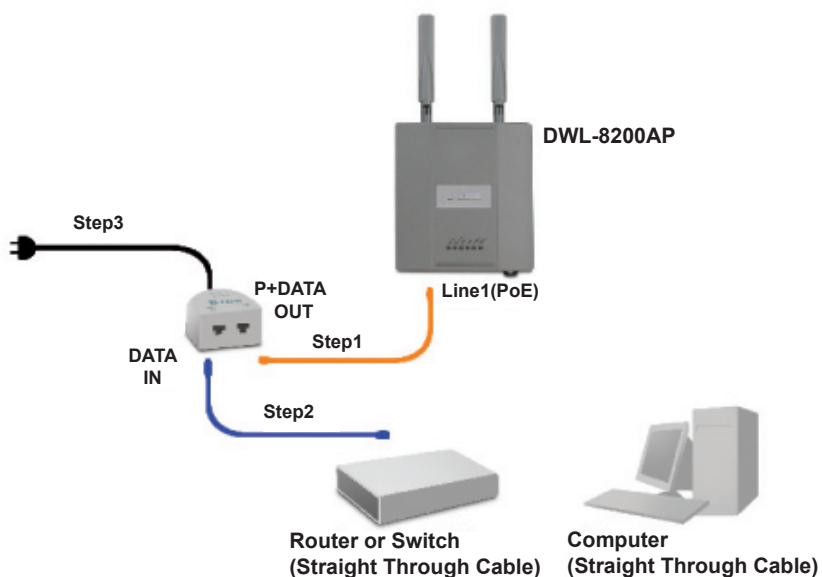


Paso 1

Conecte uno de los extremos del cable Ethernet (incluido con su paquete) a la puerta LAN 1 (PoE) del DWL-8200AP, y el otro extremo a la puerta etiquetada P+DATA OUT en la unidad PoE.

Paso 2

Conecte otro cable Ethernet desde la puerta DATA IN de la unidad PoE a un router/switch o a un PC.

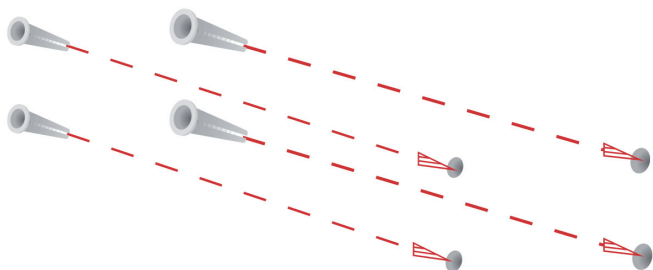


Paso 3

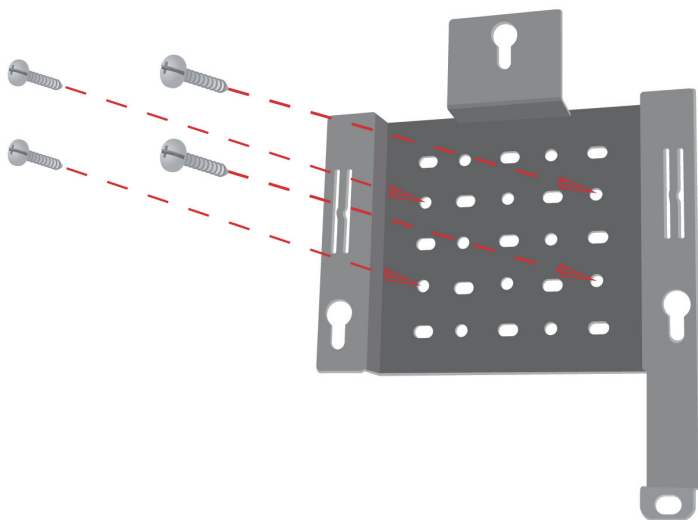
Conecte la fuente de poder al conector etiquetado POWER IN en la unidad PoE. Enchufe el cable de energía a la fuente de poder y a la toma eléctrica.

Mounting Plate Assembly

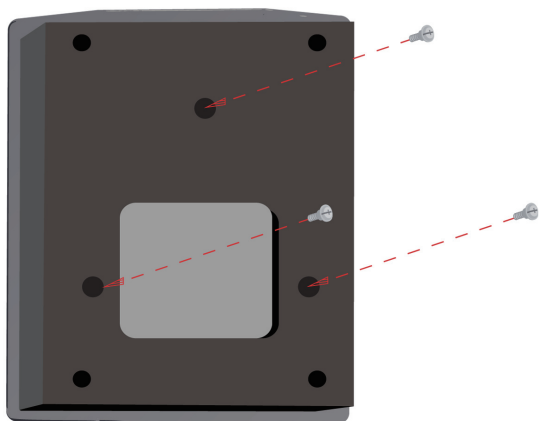
Paso 1: Inserte los sujetadores de pared proporcionados, en la pared a la cual la placa de montaje será montada.



Paso 2: Utilice los tornillos proporcionados, para asegurar la placa de montaje en la pared



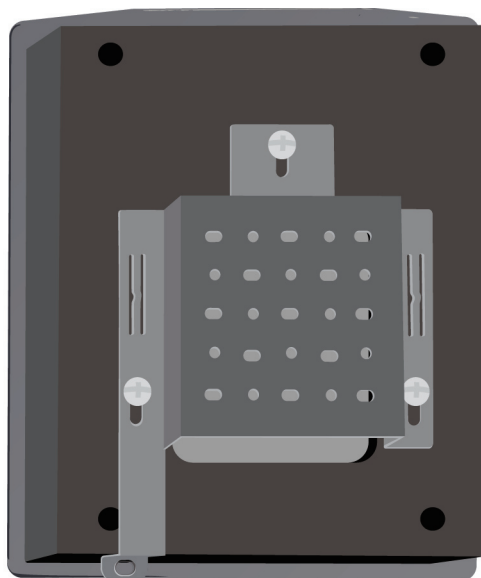
Paso 3: Ajuste firmemente los tornillos a la parte trasera del DWL-8200AP



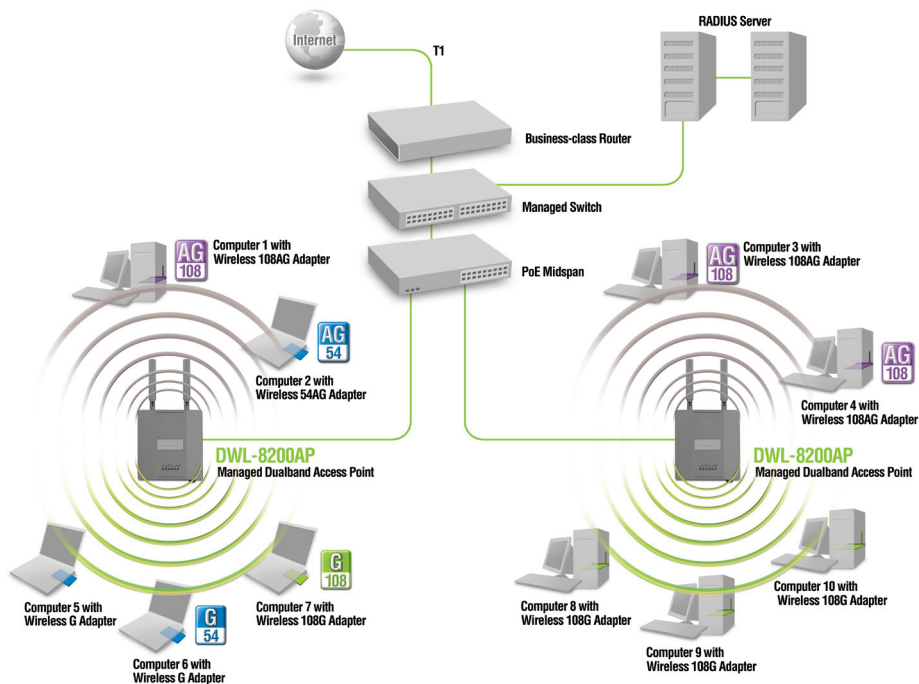
Paso 4: Ajuste el DWL-8200AP a la placa de montaje



Paso 5: Deslice el DWL-8200AP a través de las ranuras de la placa de montaje para asegurarlo en la placa



La configuración ha finalizado!



* La tasa Máxima de la señal Inalámbrica es obtenida de las especificaciones de los estándares IEEE 802.11a y 802.11g. La tasa de transferencia real puede variar. Las condiciones de red y factores ambientales, incluyendo el volumen del tráfico de red, materiales de construcción y redes saturadas, disminuyen la tasa de transferencia real.

SOPORTE TÉCNICO

Usted puede encontrar actualizaciones de softwares o firmwares y documentación para usuarios a través de nuestro sitio www.dlinkla.com

SOPORTE TÉCNICO PARA USUARIOS EN LATINO AMERICA

Soporte técnico a través de los siguientes teléfonos de D-Link

PAIS	NUMERO	HORARIO
Argentina	0800 - 12235465	Lunes a Viernes 08:00am a 21:00pm
Chile	800 - 835465 ó (02) 5941520	Lunes a Viernes 08:00am a 21:00pm
Colombia	01800 - 9525465	Lunes a Viernes 06:00am a 19:00pm
Costa Rica	0800 - 0521478	Lunes a Viernes 05:00am a 18:00pm
Ecuador	1800 - 035465	Lunes a Viernes 06:00am a 19:00pm
El Salvador	800 - 6335	Lunes a Viernes 05:00am a 18:00pm
Guatemala	1800 - 8350255	Lunes a Viernes 05:00am a 18:00pm
México	01800 - 1233201	Lunes a Viernes 06:00am a 19:00pm
Panamá	011 008000525465	Lunes a Viernes 05:00am a 18:00pm
Perú	0800 - 00968	Lunes a Viernes 06:00am a 19:00pm
República Dominicana	18887515478	Lunes a Viernes 05:00am a 18:00pm
Venezuela	0800 - 1005767	Lunes a Viernes 06:30am a 19:30pm

Soporte Técnico de D-Link a través de Internet

www.dlinkla.com

e-mail: soporte@dlinkla.com & consultas@dlinkla.com

D-Link®
Building Networks for People

Notes



■ ■ Guia de Instalação

DWL-8200AP
Access Point Dual Band Gerenciável

Requisitos de Sistema:

Requisitos Mínimos de Sistema:

- Drive de CD-ROM
- Computadores com Windows[®], Macintosh[®], ou Linux
- Adaptador Ethernet Instalado, Internet Explorer 6.0 ou Netscape Navigator[™] 7.0 ou superior

Conteúdo da Embalagem



Access Point Dual Band Gerenciável DWL-8200AP



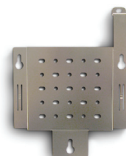
Unidade base Power over Ethernet



Cabo Ethernet (CAT5 UTP)



CD-ROM com Manual



Placa de Montagem



Cabo de Energia



Adaptador de Energia - DC 48V, 0.4A

Usar um adaptador de energia com a voltagem diferente, poderá danificar o produto e violar a garantia.

Se algum dos itens acima estiver faltando, favor entrar em contato com a sua revenda.

Instalando o Hardware

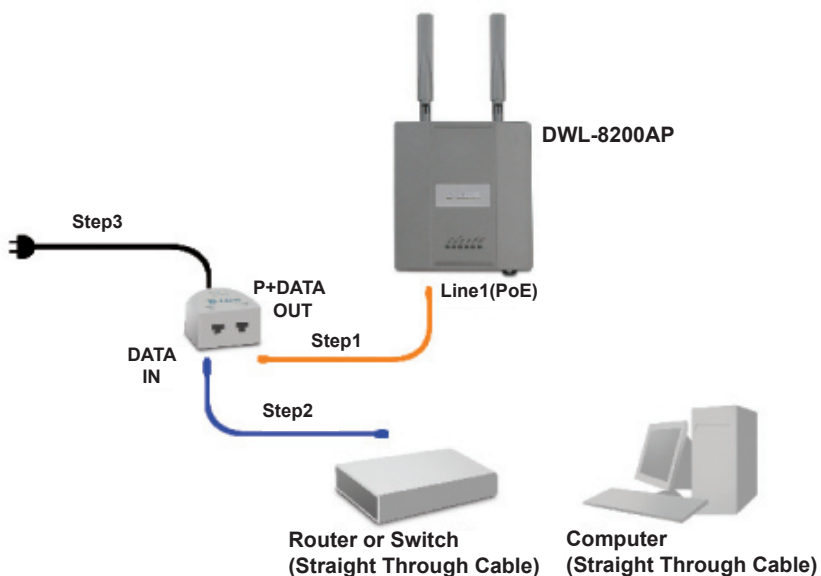


Passo 1

Conecte uma extremidade do cabo Ethernet (incluído com o seu pacote) na porta LAN 1 (PoE) no DWL-8200AP, e a outra extremidade do cabo, na porta descrita P+DATA OUT na base da unidade PoE.

Passo 2

Conecte outro cabo Ethernet na porta DATA IN na base da unidade PoE para o seu router/switch ou para o PC.

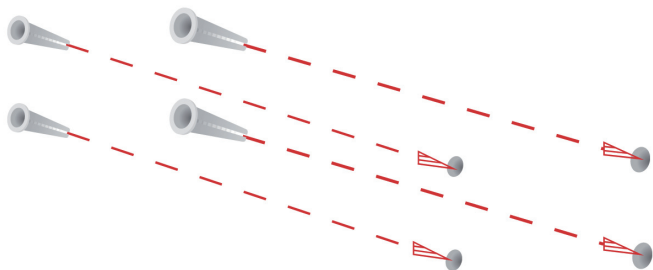


Passo 3

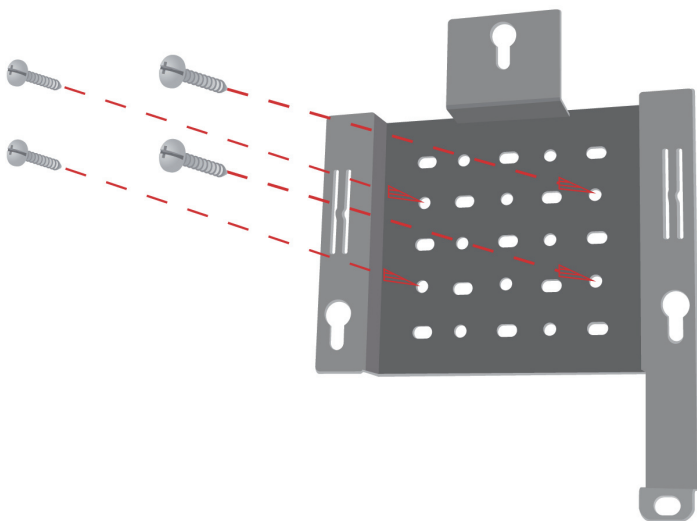
Conecte o adaptador de energia na porta POWER IN na base da unidade PoE. Conecte a outra extremidade do cabo em uma tomada na parede ou a um estabilizador.

Mounting Plate Assembly

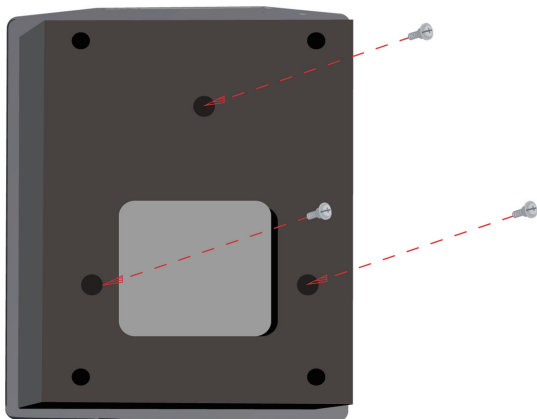
Passo 1: Insira as buchas na parede no local onde será fixado o access point.



Passo 2: Utilize os parafusos fornecidos para fixação na parede.



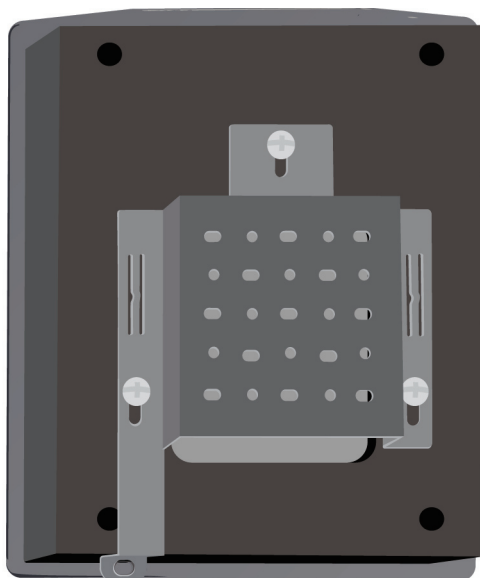
Passo 3: Coloque os parafusos na parte traseira do DWL-8200AP.



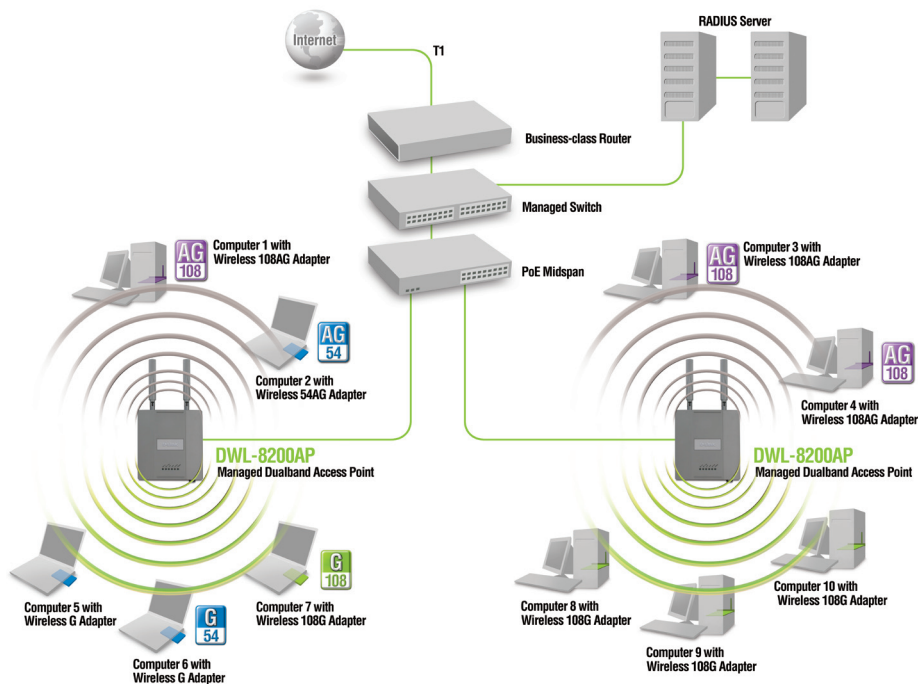
Passo 4: Parafuse o DWL-8200AP ao suporte de montagem.



Passo 5: Deslize o DWL-8200AP para baixo até que o suporte de montagem fique encaixado com segurança.



Sua Configuração está Concluída!



* A taxa máxima do sinal Wireless atende os padrões IEEE 802.11a e 802.11g. Os dados de largura de banda poderão variar. As condições da rede e fatores do ambiente, incluindo volume do tráfego de rede, materiais usados na construção, e o tráfego excessivo na largura de banda da rede, podem fazer com que o sinal tenha variações.

Suporte Técnico

Você pode encontrar atualizações de software e documentação de usuário no site da D-Link Brasil.

A D-Link fornece suporte técnico gratuito para clientes no Brasil durante o período de vigência da garantia deste produto.

Suporte Técnico para clientes no Brasil:

Horários de atendimento:

Segunda à Sexta-feira, das 8:00h às 21:00h,
Sábado, das 8:00h às 20:00h

Website para suporte: www.dlink.com.br/suporte

e-mail: suporte@dlink.com.br

Telefones para contato:

Clientes de São Paulo: 2185-9301
Clientes das demais regiões: 0800 70-24-104

D-Link[®]
Building Networks for People

Notes



■ ■ 安裝手冊

DWL-8200AP
可網管 雙頻無線基地台

系統需求:

最小系統需求

- 光碟機
- 安裝有 Windows®, Macintosh®, or Linux-based 作業系統之電腦
- 安裝網路卡與Internet Explorer version 6.0 或Netscape Navigator™ version 7.0 ,或更新版本之瀏覽器

包裝清單



DWL-8200AP 可網管 雙頻無線基地台



光碟 (內含 設備使用手冊)



設備壁掛固定盤



POE 連接器



電源線



乙太網路纜線 (CAT5 UTP 直線)



電源供應器 DV-48V 0.4A

使用不同電壓的電源供應器可能導致設備損壞,並影響設備的保固。

若是包裝中的配件有缺少,請聯絡您所購買的店家或經銷商

硬體安裝

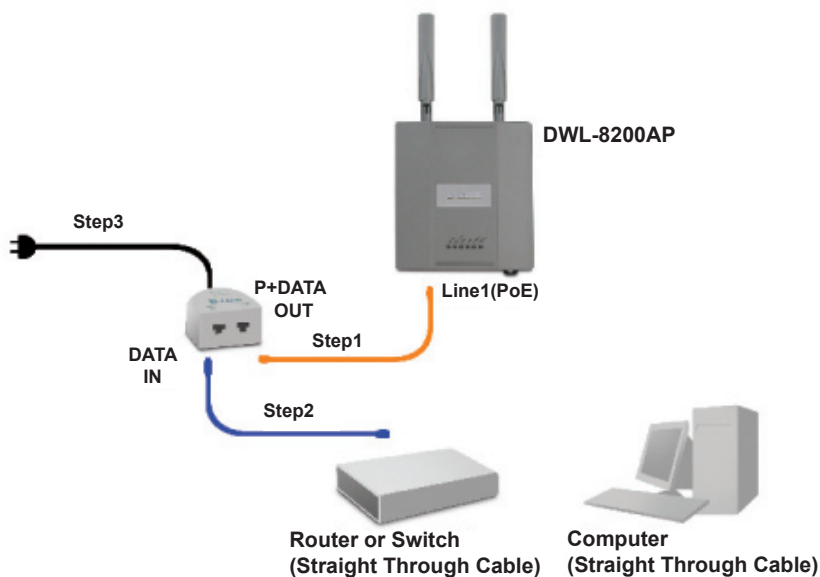


步驟一

將網路線(隨附在產品包裝中)一端連接至DWL-8200AP LAN1 (POE) 網路孔,另一端網路線接頭連接至PoE轉接器上貼有” P+DATA” 的插孔。

步驟二

將另一條網路線接頭一端連接在PoE 轉接器 標示有 “DATA IN” 的網路埠,另一端網路線接頭連接至 您的路由器/交換器或是電腦。

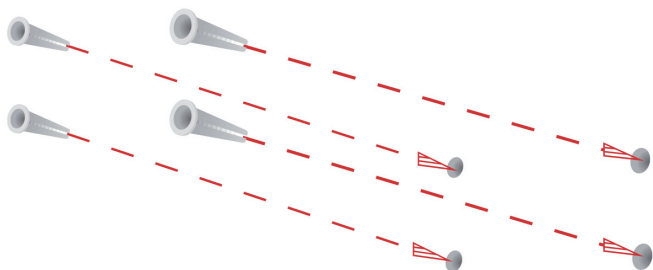


步驟三

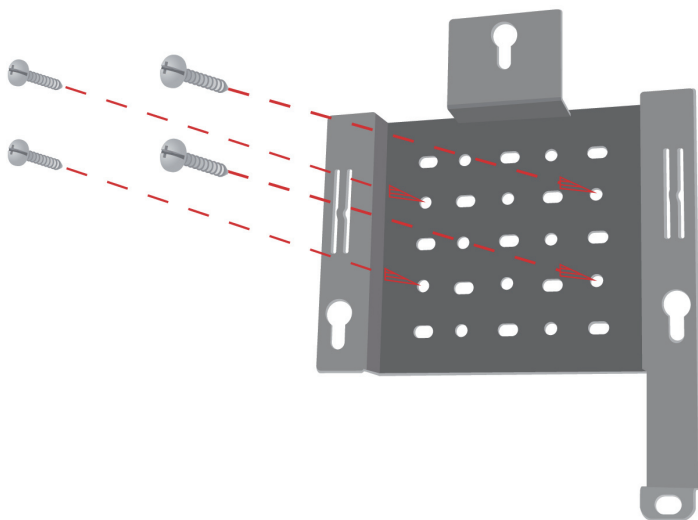
將電源供應器連接至PoE 轉接器上標有” Power IN “ 插座,再將電源供應器插頭插入供電的電源插座上。

Mounting Plate Assembly

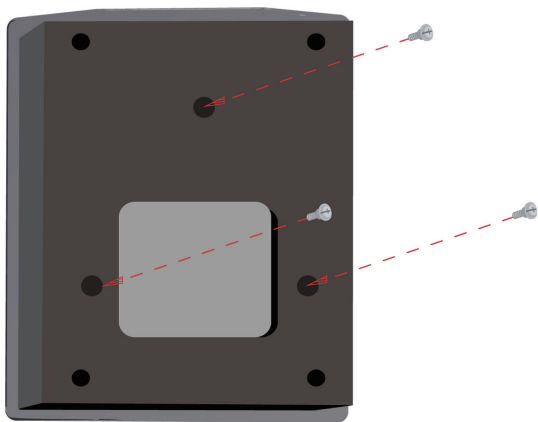
步驟一：請將壁掛螺紋固定栓塞入牆壁上準備安裝無線基地台位置之固定鑽孔。



步驟二：請將無線基地台壁掛架使用螺絲固定於牆壁上。



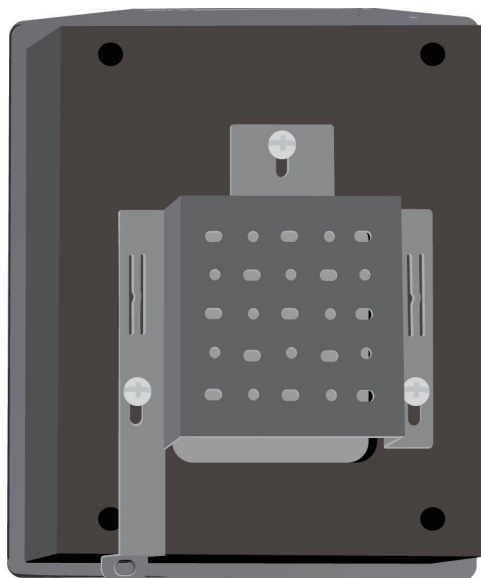
步驟三：請將配件剩餘的螺絲固定於DWL-8200AP設備背面之螺絲孔。



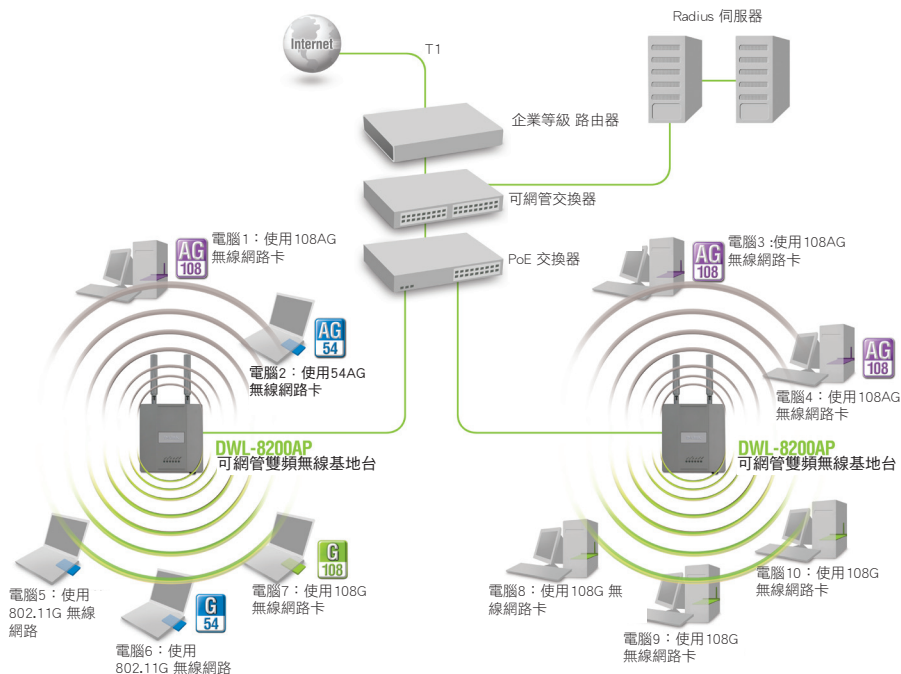
步驟四：將DWL-8200AP固定於設備壁掛架上。



步驟五：當DWL-8200AP設備固定於壁掛架上時，請確實將設備依圖示方法向下壓，以固定設備



您的安裝已經完成！



*最大的無線訊號速率定義於IEEE 802.11a和802.11g無線標準規範。實際的資料傳輸速率會因網路環境而下降或改變,網路狀態和環境因素,包含網路的流量,建築物的材質或是無線網路實際資料傳輸速率過低等都是影響因素。

D-Link 友訊科技 台灣分公司 技術支援資訊

如果您還有任何本使用手冊無法協助您解決的產品相關問題，台灣地區用戶可以透過我們的網站、電子郵件或電話等方式與D-Link台灣地區技術支援工程師聯絡。

D-Link 免付費技術諮詢專線

0800-002-615

服務時間：週一至週五，早上9:00到晚上9:00
(不含周六、日及國定假日)

網 站：<http://www.dlink.com.tw>

電子郵件：dssqa_service@dlink.com.tw

如果您是台灣地區以外的用戶，請參考D-Link網站，全球各地分公司的聯絡資訊以取得相關支援服務。

產品保固期限、台灣區維修據點查詢，請參考以下網頁說明：

<http://www.dlink.com.tw>

產品維修：

使用者可直接送至全省聯強直營維修站或請洽您的原購買經銷商。

D-Link®
Building Networks for People

Notes



Petunjuk Pemasangan

DWL-8200AP
Managed Dualband Access Point

Kebutuhan Sistem

Kebutuhan Sistem Minimum:

- Drive CD-ROM
- Komputer dengan sistem operasi Windows®, Macintosh®, atau Linux
- Sebuah kartu jaringan yang terpasang
- Internet Explorer versi 7.0 atau Mozilla Firefox versi 3.0 atau yang lebih baru

Isi Paket



DWL-8200AP
Managed Dualband Access Point



Unit dasar PoE



Kabel Ethernet
(CAT5 UTP / Straight Through)



CD-ROM yang berisi Petunjuk Penggunaan



Mounting Plate



Kabel Power

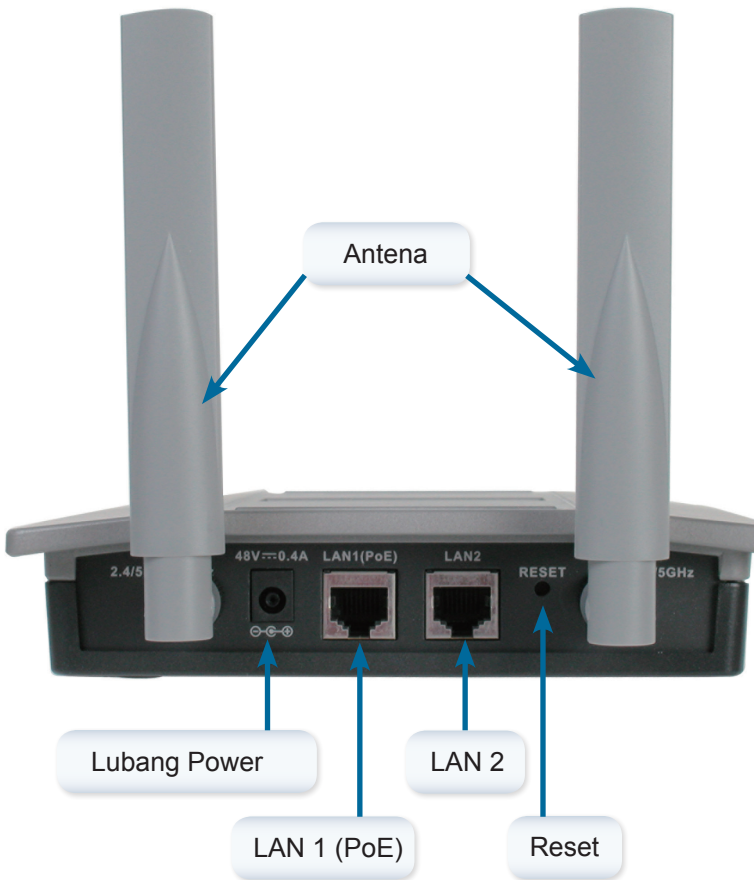


Power Adapter-DC 48V, 0.4A

Catatan : Menggunakan power adapter yang tegangannya berbeda dengan yang ada dalam paket penjualan DWL-8200AP dapat menyebabkan kerusakan dan akan membatalkan garansi produk ini.

Jika isi paket tidak lengkap, harap hubungi penjual.

Pemasangan Perangkat Keras

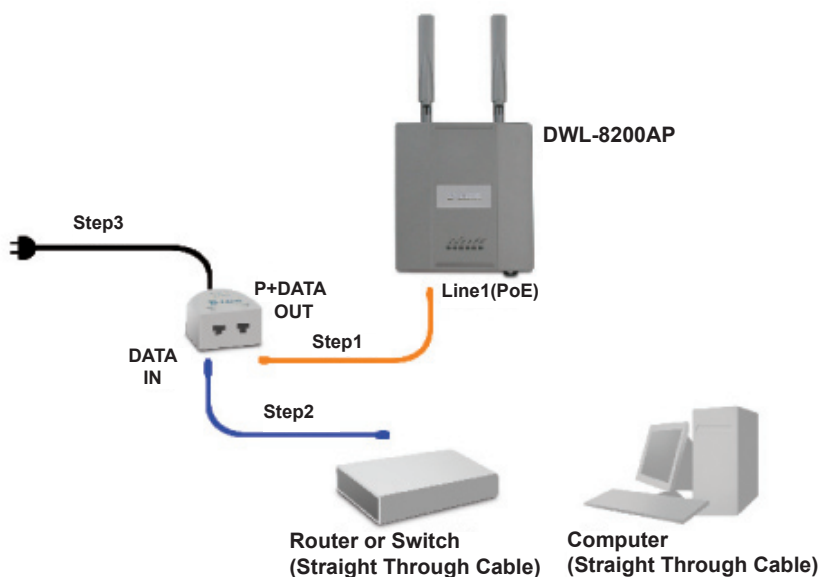


Langkah 1

Hubungkan salah satu ujung kabel Ethernet (yang termasuk dalam paket penjualan) ke port LAN pada DWL-8200AP dan ujung satunya lagi pada port yang berlabel P+DATA OUT pada unit dasar PoE.

Langkah 2

Hubungkan kabel Ethernet lainnya dari port DATA IN pada unit dasar PoE ke Router/Switch anda atau ke sebuah PC.

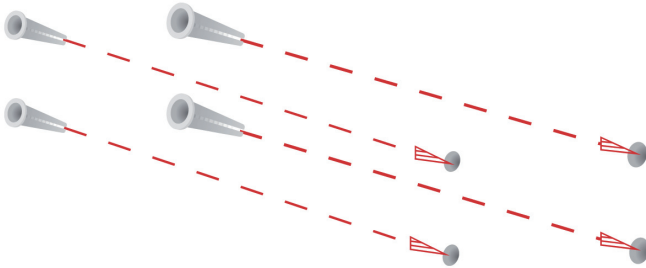


Langkah 3

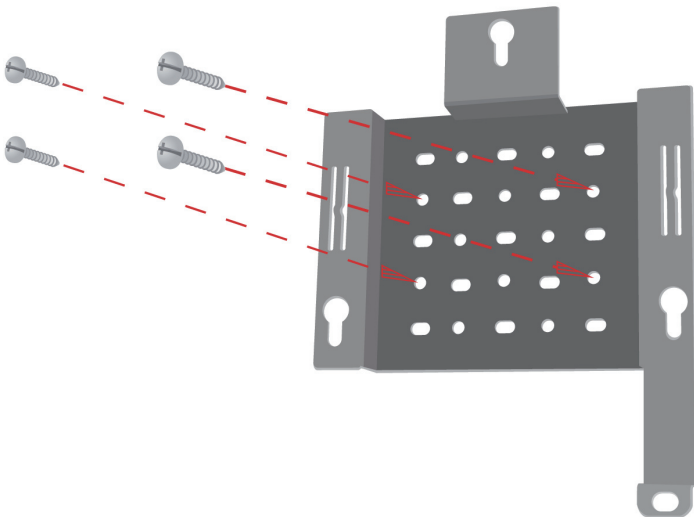
Colok power adapter ke konektor yang berlabel POWER IN pada unit dasar PoE. Kemudian Colok kabel power ke power adapter lalu colok ke colokan listrik.

Pemasangan Mounting Plate

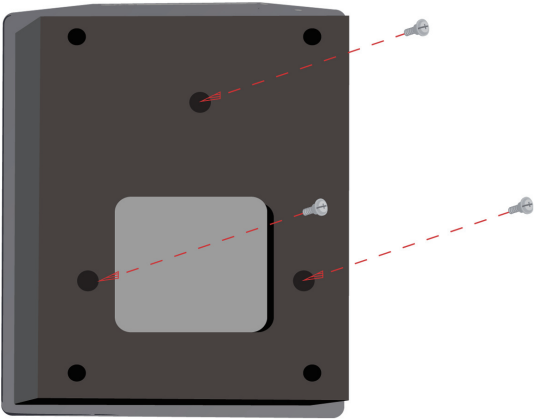
Langkah 1: Masukkan wadah penahan yang sudah disediakan kedalam dinding dimana nantinya mounting plate akan dipasang.



Langkah 2: Gunakan Sekrup yang disediakan untuk memasang mounting plate ke dinding.



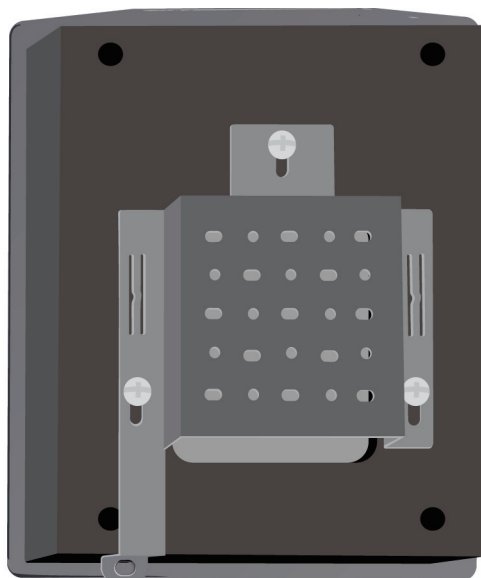
Langkah 3: Pasang sekrup yang tersisa ke belakang DWL-8200AP.



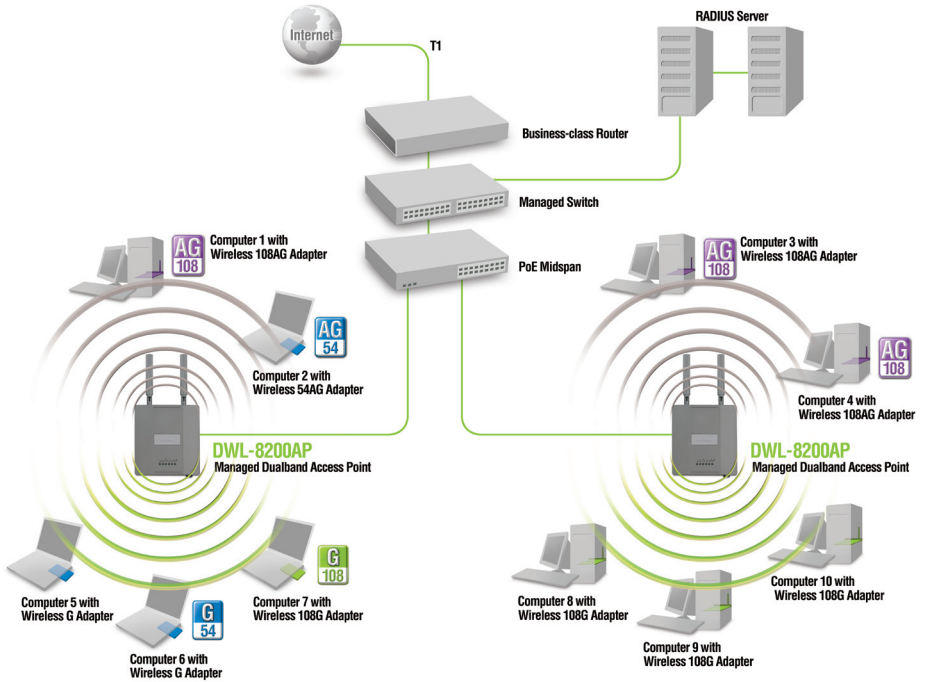
Langkah 4: Pasang DWL-8200AP ke mounting plate.



Langkah 5: Geser DWL-8200AP kebawah mengikuti alur-alur yang ada pada mounting plate untuk mengamankan dan memastikan DWL-8200AP sudah terpasang dengan baik ke mounting plate.



Pengaturan Selesai



* Kecepatan transfer data mengikuti spesifikasi dari IEEE 802.11a dan 802.11g. Throughput data sesungguhnya bisa bervariasi. Kondisi jaringan dan faktor lingkungan, termasuk jumlah dari lalu lintas jaringan, material gedung dan konstruksi, dan overhead jaringan dapat menurunkan throughput data sesungguhnya.

Dukungan Teknis

Update perangkat lunak dan dokumentasi pengguna dapat diperoleh pada situs web D-Link.

Dukungan Teknis untuk pelanggan:

Dukungan Teknis D-Link melalui telepon:

Tel: +62-21-5731610

Dukungan Teknis D-Link melalui Internet:

Email : support@dlink.co.id

Website : <http://support.dlink.co.id>

D-Link[®]
Building Networks for People

D-Link®



Ver. 2.01 (I)

2008/12/30

6WL8200QML05G