

D-Link Quick Installation Guide

This product works with the following operating system software: **Windows XP, Windows 2000, Windows Me, Windows 98se**



DWL-AB520

D-Link AirPro™
Multimode Wireless PCI Adapter

Before You Begin

You must have at least the following:

- A desktop computer with an available 32-bit PCI slot
- At least a 300 MHz processor and 32 MB of memory
- An 802.11a or 802.11b Access Point (for Infrastructure Mode) or another 802.11a or 802.11b wireless adapter (for Ad-Hoc; Peer-to-Peer networking mode.)

Check Your Package Contents

These are the items included with your DWL-AB520 purchase:



DWL-AB520 Wireless Multimode PCI Adapter



CD-ROM (containing Manual and Warranty)

If any of the above items are missing, please contact your reseller.

1 Insert the D-Link CD-ROM Into Your Computer

Turn on the computer and **Insert** the **D-Link AirPro DWL-AB520 Driver CD** into the CD-ROM drive. The step-by-step instructions that follow are shown in **Windows XP**. The steps and screens are similar for the other Windows operating systems.



Do **NOT** install the DWL-AB520 PCI Adapter into your computer before installing the driver software on the D-Link CD!

1 Insert the D-Link CD (continued)

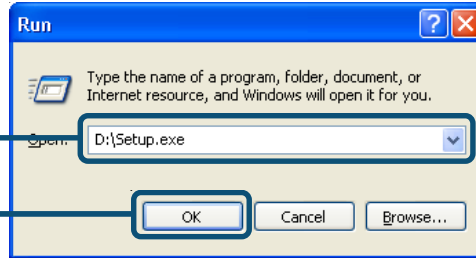
The Install Screen will appear.

Click **Install Driver/PC Utility**




If the CD does not automatically start, go to **Start > Run** and type "D:\Setup.exe." If it does start, proceed to the next screen.

Type "**D:\Setup.exe**"

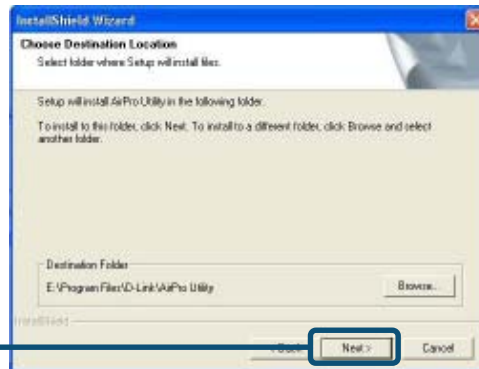


Click **OK**

 The letter "**D**" represents the letter of the CD-ROM drive. Your CD-ROM drive may be a different drive letter.

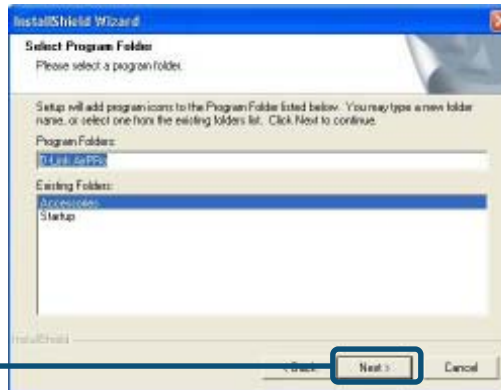


Click **Next**



Click **Next**

1 Continued...



Click **Next**



Click **No, I will restart my computer later**

Click **Finish**

Shut down your computer and **unplug** it from power source.

2 Install the DWL-AB520 Wireless PCI Adapter Into Your Computer

- A.** Make sure to turn off your computer and unplug the power cord before you begin. Remove the back cover off the computer.



- B.** Carefully guide the DWL-AB520's antenna through the PCI Slot opening adjacent to the PCI Slot that the DWL-AB520 is going to be installed in.

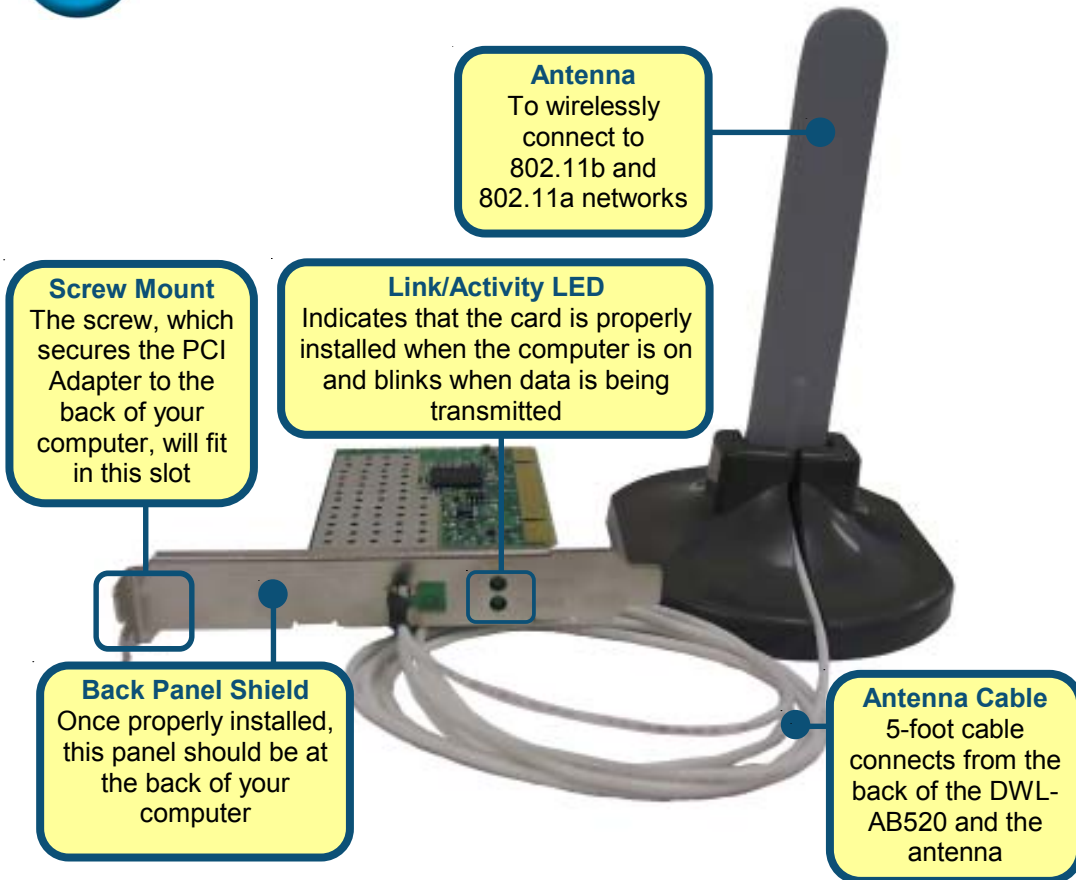
2 Continued...



- C.** Install the **DWL-AB520** carefully, and firmly seat it into an available PCI slot (which is usually “white” or “cream” colored).
- D.** Secure the DWL-AB520 back panel shield with a screw.
- E.** Replace the computer’s cover.
- F.** Gently connect the antenna to the antenna stand.



2 Continued...



3 Restart Your Computer

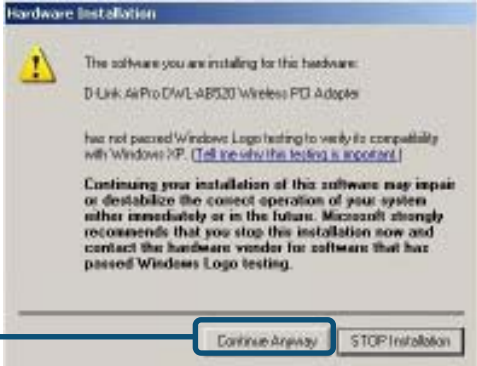
When you restart your computer this **Found New Hardware Wizard (Windows XP)** screen will appear:



3 Continued...

 **For Windows XP:** This **Hardware Installation** alert screen may appear after the desktop computer restarts.

Click **Continue Anyway** to finalize the installation



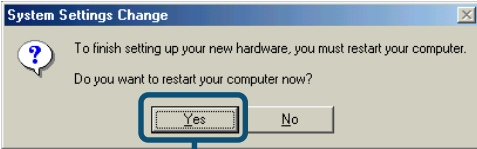
(The D-Link driver software for this device is undergoing Windows Logo testing. Microsoft certification is pending.) For Windows 2000, this **Digital Signature Not Found** screen may appear after your computer restarts

Click **Yes** to finalize the installation



For Windows Me and 98se, after your computer restarts, this **Systems Settings Change** window may appear.

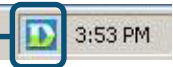
Select **Yes** to finalize the installation



4 Your Installation is Complete!

After you've continued in Windows XP (or after the computer restarts in the other Windows operating systems), the D-Link *Air* DWL-AB520 **Configuration Utility** will automatically start and the utility icon will appear in the bottom right hand corner of the desktop screen (systray). **If this icon appears GREEN, then you have successfully installed the DWL-AB520, connected to a wireless network, and ready to communicate!**

Double-click the **utility icon** to use the configuration utility.

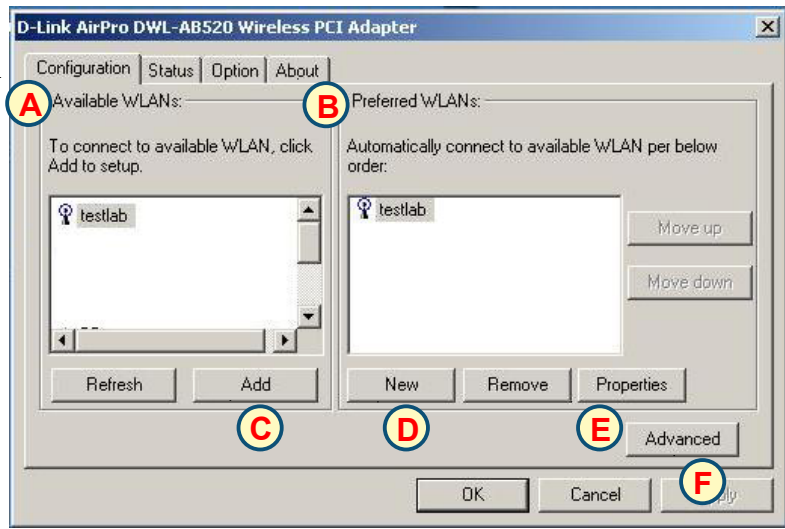


4 Using the Configuration Utility

A. Available WLAN's: is a list of all available wireless 802.11a and 802.11b networks.

B. Preferred WLAN's: is a list of all wireless 802.11a and 802.11b networks that you have connected to or are currently connected to.

C. Add : If an Access Point is not listed, click the add button to add it.



D. New : Allows you to add a Preferred WLAN manually.

E. Properties : Allows you to change IP Address and Encryption settings for highlighted Preferred WLANs.

F. Advanced : Allows you to change the connection type from Infrastructure to Adhoc.



G. Connection State : Shows current settings and signal strength

H. Hardware Information: Shows MAC Address of your DWL-AB520.

I. Advance State : Shows current settings for Turbo Mode and Ratio State.

IP Address Configuration

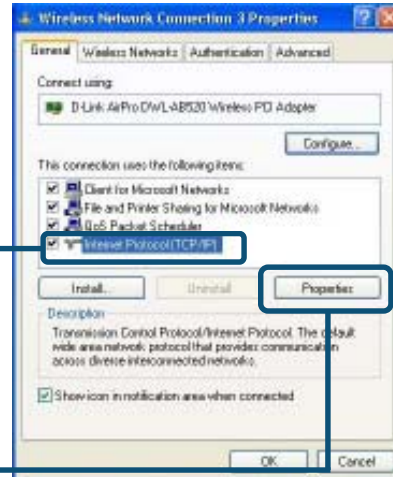
To connect to a network, make sure the proper network settings are configured for DWL-AB520.

For Microsoft Windows XP:

Go to **Start > right click on My Network Places > select Properties > Double-click on the Network Connection** associated with the DWL-AB520.

Click **Internet Protocol (TCP/IP)**

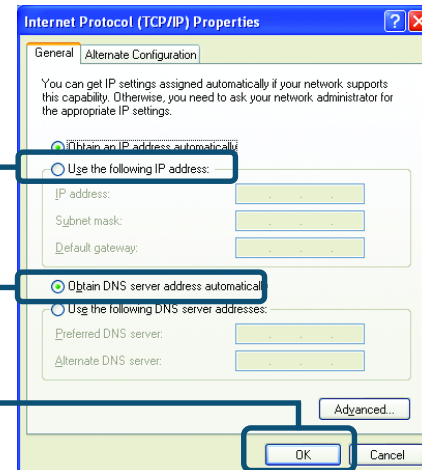
Click **Properties**



Select **Obtain an IP address automatically** (if the Wireless Router or Access Point has DHCP server enabled)

Select **Obtain DNS server address automatically**

Click **OK**



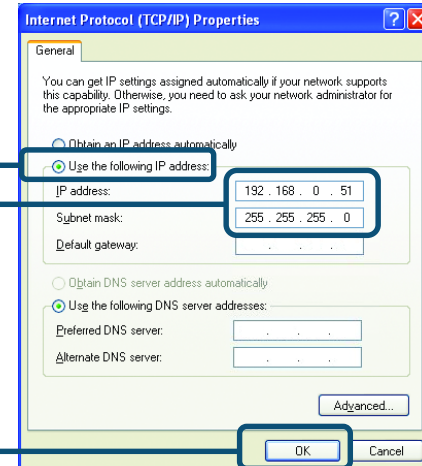
Static IP address setup

Select **Use the following IP address** (if the Wireless Router or Access Point does not have DHCP server enabled)

Input a static IP address in the same range as the Wireless Router or Access Point.

IP address: 192.168.0.51
Subnet mask: 255.255.255.0

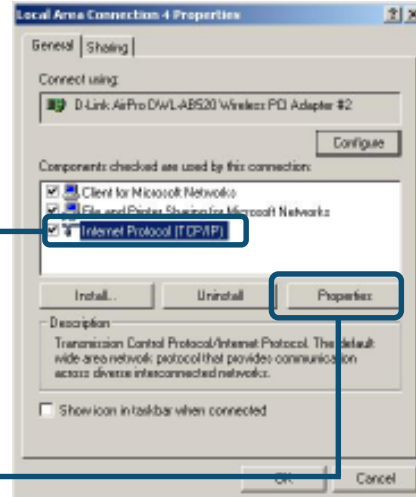
Click **OK**



Your Internet service provider provides preferred DNS server information

For Windows 2000 users:

Go to **Start > Settings > Network and Dial-up Connections** > Double-click on the **Local Area Connection** associated with the DWL-AB520 > select **Properties**



Click **Internet Protocol (TCP/IP)**

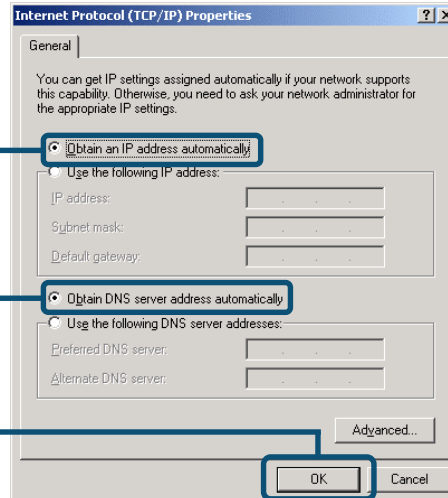
Click **Properties**

Setup for wireless router or Access Point using **DHCP server**.

Select **Obtain an IP address automatically** (if the Wireless Router or Access Point has DHCP server enabled)

Select **Obtain DNS server address automatically**

Click **OK**



Static IP address setup

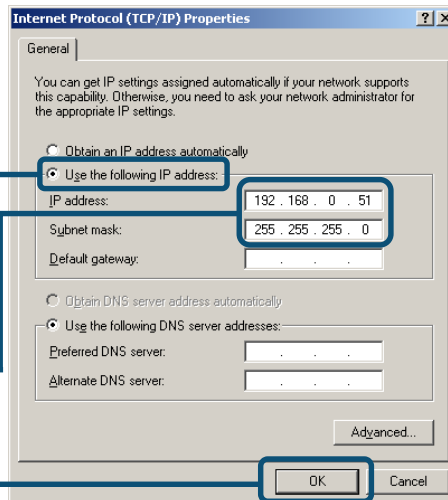
Select **Use the following IP address** (if the Wireless Router or Access Point does not have DHCP server enabled)

Input a static IP address in the same range as the Wireless Router or Access Point.

IP address: 192.168.0.51
Subnet mask: 255.255.255.0

Your Internet service provider provides preferred DNS server information

Click **OK**



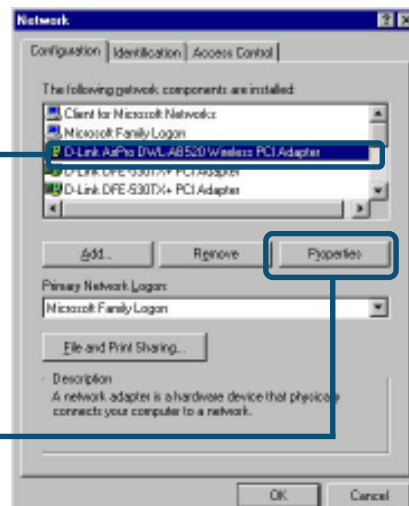
For Windows Me and 98se users:

Click **Internet Protocol (TCP/IP)**

Go to **Start > Settings > Control Panel** > Double-click on the **Local Area Connection** associated with the DWL-AB520 > select **Properties**

Click **Internet Protocol (TCP/IP)**

Click **Properties**

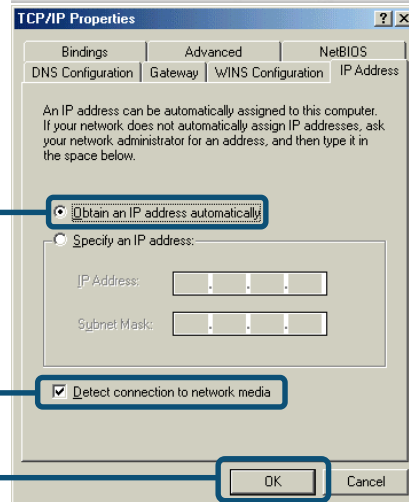


Setup for wireless router or Access Point using **DHCP server**.

Select **Obtain an IP address automatically** (if the Wireless Router or Access Point has DHCP server enabled)

Select **Detect connection to network media**

Click **OK**



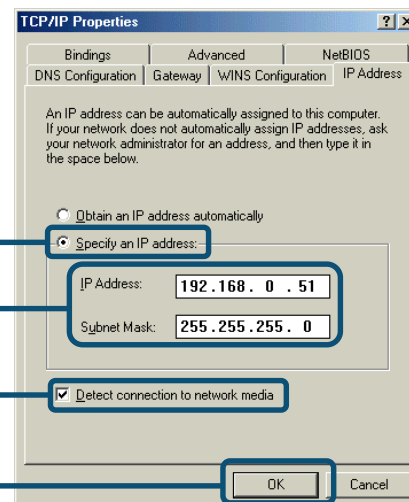
Static IP address setup

Select **Use the following IP address** (if the Wireless Router or Access Point does not have DHCP server enabled)

IP address: **192.168.0.51**
Subnet mask: **255.255.255.0**

Select **Detect connection to network media**

Click **OK**



NOTES

Technical Support

Software updates and documentation are available on the **D-Link** website.

D-Link provides free technical support for customers within the United States for the duration of the warranty period on this product.

U.S. customers can contact **D-Link** technical support through our web site or by phone.

D-Link Technical Support over the Telephone:

(877) 453-5465

24 hours a day, seven days a week

D-Link Technical Support over the Internet:

<http://support.dlink.com>

email: support@dlink.com

D-Link[®]
Building Networks for People